

THE  
MILTON  
PRESSED  
BRICK CO  
MILTON ONT



FINE ART

50  
EOW  
9812

CHAS. E. HILL,  
SUPERINTENDENT

J. S. MCCANNELL,  
PRESIDENT AND MAN'G. DIRECTOR

J. MCRAIM,  
TORONTO MANAGER

# THE MILTON PRESSED BRICK CO. LIMITED



WORKS AND  
HEAD OFFICE  
MILTON  
ONT.





## FIREPLACES

**T**HE Hearth—The Fireside—The Inglenook—  
The Chimney Corner. What Delightful fan-  
cies—Happy thoughts and loving associations  
are centred around the fireside. In story—in  
legend—in song, from time immemorial—the  
fireside has been ever an inspiration and a delight.

The mere mention of the fireside suggests cosiness, comfort and good cheer. From the Hospitable roar of the blazing Yule Log to the grateful glow of the "den" or library fire—the open fireside radiates warmth to the human heart while ministering to our physical comforts. Truly it is significant that "Hearth" is synonymous with "Home," and no home is complete without at least one fireplace—one chimney corner.

And of course bricks or terra cotta is the appropriate material for fireplaces, as leather is for foot gear. Its fire resisting properties—its durability—its permanency give it advantages far beyond those of any other materials.

Modern ideals in home building combine the artistic with the comfortable—they express refinement as well as cosiness. In this connection the artistic designs and multiplicity of charming color effects make MILTON BRICK fireplaces pre-eminently the ideal "Chimney Corner."

The peculiar texture of the brick itself—the range of beautiful shades, tints and "fumed flashes" possible with the MILTON BRICK, impart an atmosphere of refinement and harmony to any dwelling.



We invite you to select from the illustrations shown here and write us concerning them. Information and advice will be gladly given. We furnish Blue Prints for setting up, so that any first class bricklayer can do the work.





**Sketch No. 10**

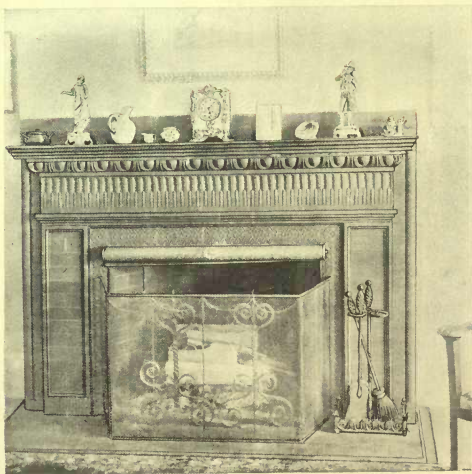
Width of breast.....	7 feet 6 inches
Height of mantel.....	7 " 3 "
Width of opening.....	4 " 9 "
Height of opening.....	2 " 8 "

Price of Red Face and Moulded Brick necessary to lay up this Mantel, including tile for hearth and fire brick for back..... \$60 00

Price of Buff..... 75 00

This price includes packing and delivery on board cars Milton.





Sketch No. 11

Width of breast.....	5 feet 8 inches
Height of mantel.....	4 " 7 "
Width of opening.....	3 " 0 "
Height of opening.....	2 " 7 "
Price of Red Face and Moulded Brick necessary to lay up this Mantel, including tile for hearth and fire brick for back.....	\$25 00
Price of Buff.....	37 00

This price includes packing and delivery on board cars Milton.





Sketch No. 11A

7 feet 6 inches wide x 5 feet high.

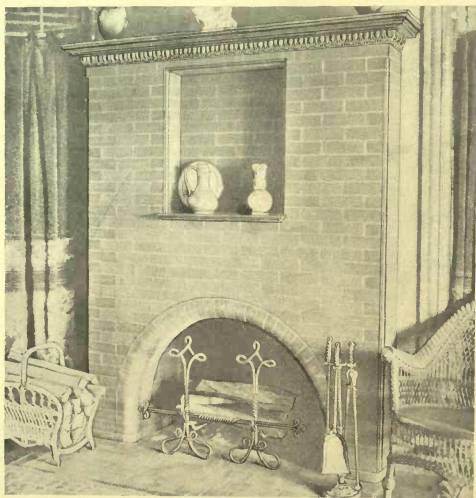
Fireplace—3 feet wide x 2 feet 7 inches high.

Price of Red Face and Moulded Brick necessary to lay up this Mantel, including tile for hearth and fire brick for back.....	\$40 00
Price of Buff.....	50 00

This price includes packing and delivery on board cars Milton.







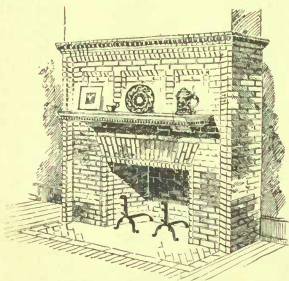
Sketch No. 12

Width of breast.....	5 feet 6 inches
Height of mantel.....	6 " 5 "
Width of opening.....	3 " 6 "
Height of opening.....	2 " 8 "

Price of Red Face and Moulded Brick necessary to lay up this Mantel, including tile for hearth and fire brick for back..... \$35 00  
 Price of Buff..... 45 00

This price includes packing and delivery on board cars Milton.





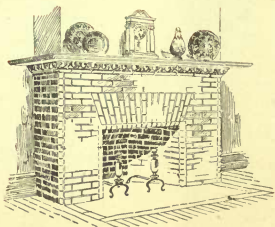
Sketch No. 12A

8 feet 6 inches wide x 7 feet 6 inches high.  
 Fireplace—4 feet wide x 2 feet 7 inches high.

Price of Red Face and Moulded Brick necessary to  
 lay up this Mantel, including tile for hearth and  
 fire brick for back..... \$60 00  
 Price of Buff..... 75 00

This price includes packing and delivery on board  
 cars Milton.





Sketch No. 12B

7 feet 0½ inches wide x 5 feet high.

Fireplace—3 feet 6 inches wide x 2 feet 3 inches high.

Price of Red Face and Moulded Brick necessary to lay up this Mantel, including tile for hearth and fire brick for back..... \$35 00

Price of Buff..... 45 00

This price includes packing and delivery on board cars Milton.





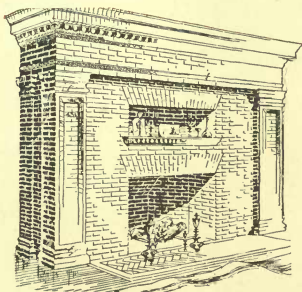
**Sketch No. 13**

Width of breast.....	6 feet 0 inches
Height of mantel.....	7 " 3 "
Width of opening.....	4 " 0 "
Height of opening.....	2 " 9 "

Price of Red Face and Moulded Brick necessary to lay up this Mantel, including tile for hearth and fire brick for back.....	\$50 00
Price of Buff.....	65 00

This price includes packing and delivery on board cars Milton.





Sketch No. 13A

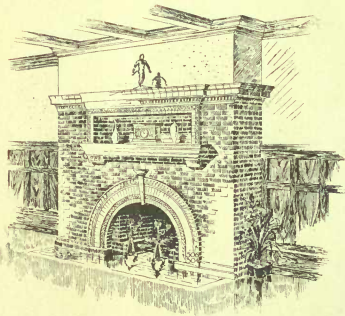
9 feet 6 inches wide x 7 feet 3 inches high.  
 Width of Opening, 4 feet 6 inches; height of Opening,  
 4 feet.

Suitable for a Club, Hotel, Railroad Station, or other  
 semi-public building.

Price of Red Face and Moulded Brick necessary to  
 lay up this Mantel, including tile for hearth and  
 fire brick for back.....\$100 00  
 Price of Buff..... 135 00

This price includes packing and delivery on board  
 cars Milton.





Sketch No. 13B

9 feet 6 inches wide x 7 feet 3 inches high.  
Fireplace—2 feet radius.

Price of Red Face and Moulded Brick necessary to lay up this Mantel, including tile for hearth and fire brick for back.....	\$ 75 00
Price of Buff.....	100 00

This price includes packing and delivery on board  
cars Milton.





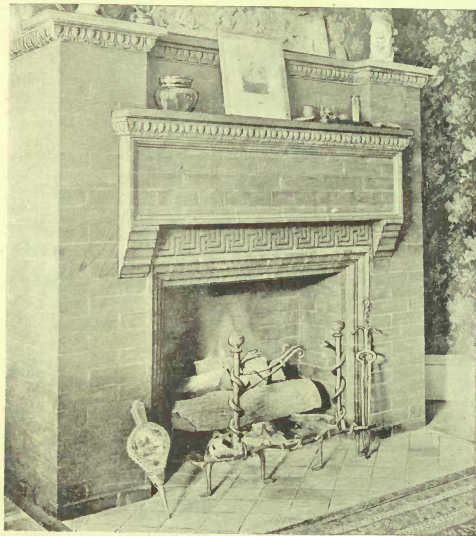
Sketch No. 14

Width of breast.....	5 feet 6 inches
Height of mantel.....	4 " 10 "
Width of opening.....	2 " 8 "
Height of opening.....	2 " 3 "

Price of Red Face and Moulded Brick necessary to lay up this Mantel, including tile for hearth and fire brick for back.....	\$30 00
Price of Buff.....	45 00

This price includes packing and delivery on board cars Milton.





Sketch No. 15

Width of breast.....	5 feet 4 inches
Height of mantel.....	5 " "
Width of opening.....	2 " 4 "
Height of opening.....	2 " 7 "
Price of Red Face and Moulded Brick necessary to lay up this Mantel, including tile for hearth and fire brick for back.....	\$33 00
Price of Buff.....	45 00

This price includes packing and delivery on board cars Milton.







Sketch No. 16

Width of breast.....	5 feet 10 inches
Height of mantel.....	4 " "
Width of opening.....	3 " 0 "
Height of opening.....	2 " 0 "
Price of Red Face and Moulded Brick necessary to lay up this Mantel, including tile for hearth and fire brick for back.....	\$25 00
Price of Buff.....	35 00

This price includes packing and delivery on board cars Milton.




**MILTON PRESSED BRICK CO. LIMITED**



**Sketch No. 17**

Width of breast.....	5 feet 0 inches
Height of mantel.....	6 " 3 $\frac{3}{4}$ "
Width of opening.....	2 " 10 $\frac{3}{8}$ "
Height of opening.....	2 " 8 $\frac{7}{8}$ "

Price of Red Face and Moulded Brick necessary to  
 lay up this Mantel, including tile for hearth and  
 fire brick for back..... \$44 00  
 Price of Buff..... 60 00

This price includes packing and delivery on board  
 cars Milton.





**Sketch No. 18**

Width of breast.....	6 feet 0 inches
Height of mantel.....	9 " 0 "
Width of opening.....	3 " 8 "
Height of opening.....	3 " 7 "

Price of Red Face and Moulded Brick necessary to lay up this Mantel, including tile for hearth and fire brick for back..... \$60 00

Price of Buff..... 80 00

This price includes packing and delivery on board cars Milton.



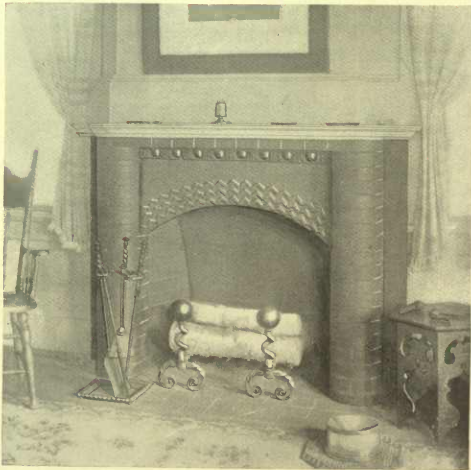


Sketch No. 19

Width of breast.....	7 feet 0 inches
Height of mantel.....	7 " 0 "
Width of opening.....	3 " 0 "
Height of opening.....	2 " 7 "
Price of Red Face and Moulded Brick necessary to lay up this Mantel, including tile for hearth and fire brick for back.....	\$40 00
Price of Buff.....	55 00

This price includes packing and delivery on board cars Milton.





**Sketch No. 20**

Width of breast.....	.5 feet 8 inches
Height of mantel.....	.4 " 1 "
Width of opening.....	.2 " 6 "
Height of opening.....	.2 " 6 "
Price of Red Face and Moulded Brick necessary to lay up this Mantel, including tile for hearth and fire brick for back.....	\$18 00
Price of Buff.....	26 00

This price includes packing and delivery on board cars Milton.





**Sketch No. 21**

Width of breast.....	5 feet 7½ inches
Height of mantel.....	4 " 0 "
Width of opening.....	3 " 0 "
Height of opening.....	2 " 7½ "
Price of Red Face and Moulded Brick necessary to lay up this Mantel, including tile for hearth and fire brick for back.....	\$18 00
Price of Buff.....	26 00

This price includes packing and delivery on board cars Milton.





**Sketch No. 22**

Width of breast.....	5 feet 6 inches
Height of mantel.....	5 " 1 "
Width of opening.....	2 " 8 "
Height of opening.....	2 " 5 "
Price of Red Face and Moulded Brick necessary to lay up this Mantel, including tile for hearth and fire brick for back.....	\$27 00
Price of Buff.....	37 00
This price includes packing and delivery on board cars Milton.	





Sketch No. 23

Width of breast.....	6 feet 2 inches
Height of mantel.....	2 " "
Width of opening.....	2 " 5 "
Height of opening.....	2 " 2 "

Price of Red Face and Moulded Brick necessary to lay up this Mantel, including tile for hearth and fire brick for back.....	\$100 00
Price of Buff.....	125 00

This price includes packing and delivery on board  
cars Milton.







Sketch No. 24

Width of breast.....	6 feet 1 inch
Height of mantel.....	4 " 5 inches
Width of opening.....	2 " 7 "
Height of opening.....	2 " 7 "

Price of Red Face and Moulded Brick necessary to lay up this Mantel, including tile for hearth and fire brick for back.....	\$25 00
Price of Buff.....	34 00

This price includes packing and delivery on board cars Milton.





Sketch No. 25

Width of breast.....	5 feet 7 inches
Height of mantel.....	4 " 3 "
Width of opening.....	2 " 10 "
Height of opening.....	2 " 7 "

Price of Red Face and Moulded Brick necessary to lay up this Mantel, including tile for hearth and fire brick for back..... \$25 00  
 Price of Buff..... 35 00

This price includes packing and delivery on board cars Milton.





**Sketch No. 26**

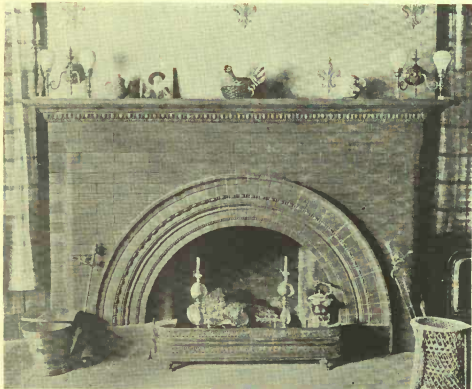
Width of breast.....	5 feet 6 inches
Height of mantel.....	4 " 10 "
Width of opening.....	2 " 9 "
Height of opening.....	2 " 5 "
Price of Red Face and Moulded Brick necessary to lay up this Mantel, including tile for hearth and fire brick for back.....	\$30 00
Price of Buff.....	40 00

This price includes packing and delivery on board cars Milton.



X


**MILTON PRESSED BRICK CO. LIMITED**



Sketch No. 27

Width of breast.....	7 feet 8 inches
Height of mantel.....	5 " 0 "
Width of opening.....	4 " 0 "
Height of opening.....	2 " 7 "
Width of opening between hobs.....	2 " 8 "
Price of Red Face and Moulded Brick necessary to lay up this Mantel, including tile for hearth and fire brick for back.....	\$45 00
Price of Buff.....	54 00

This price includes packing and delivery on board cars Milton.



**MILTON PRESSED BRICK CO. LIMITED**



**Sketch No. 28**

Width of breast.....	5 feet 10 1/4 inches
Height of mantel.....	5 " 7 " "
Width of opening.....	3 " 0 " "
Height of opening.....	2 " 10 " "

Price of Red Face and Moulded Brick necessary to lay up this Mantel, including tile for hearth and fire brick for back..... \$39 00  
 Price of Buff..... 48 00

This price includes packing and delivery on board cars Milton.





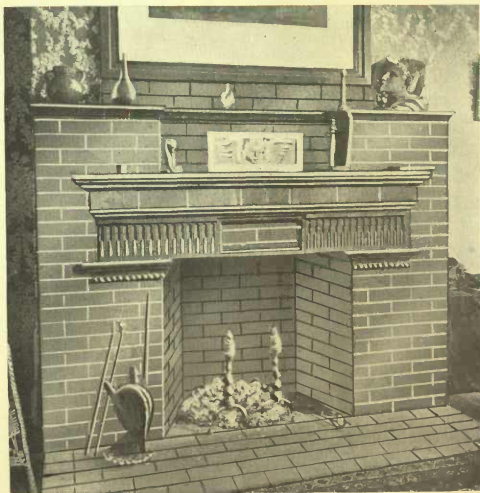
Sketch No. 29

Width of breast.....	7 feet 6 inches
Height of mantel.....	7 " 4 "
Width of opening.....	4 " 9 "
Height of opening.....	2 " 8 "

Price of Red Face and Moulded Brick necessary to lay up this Mantel, including tile for hearth and fire brick for back.....	\$65 00
Price of Buff.....	78 00

This price includes packing and delivery on board cars Milton.





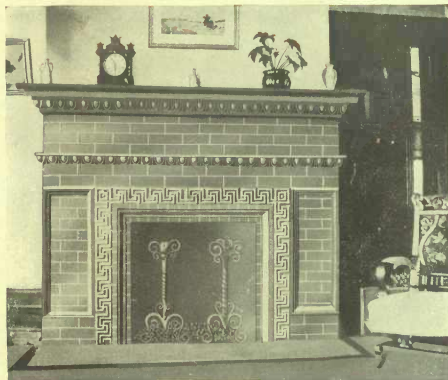
**Sketch No. 30**

Width of breast.....	6 feet 6 inches
Height of mantel.....	5 " 0 "
Width of opening.....	2 " 11 "
Height of opening.....	2 " 7 "

Price of Red Face and Moulded Brick necessary to lay up this Mantel, including tile for hearth and fire brick for back.....	\$25 00
Price of Buff.....	35 00

This price includes packing and delivery on board cars Milton.





Sketch No. 31

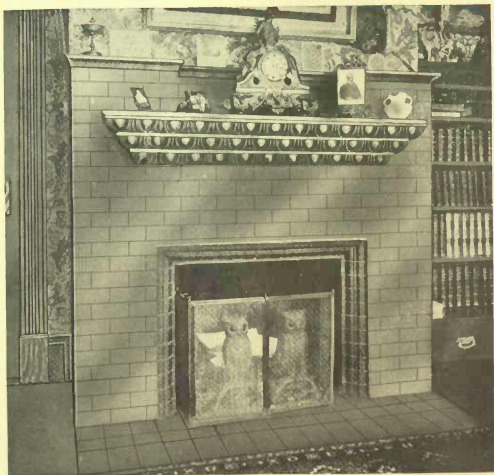
Width of breast.....	6 feet 4 $\frac{1}{2}$ inches
Height of mantel.....	4 " 11 "
Width of opening.....	2 " 5 "
Height of opening.....	2 " 3 "

Price of Red Face and Moulded Brick necessary to lay up this Mantel, including tile for hearth and fire brick for back.....	\$28 00
Price of Buff.....	37 00

This price includes packing and delivery on board cars Milton.







Sketch No. 32

Width of breast.....	.5 feet 8 inches
Height of mantel.....	4 " 10 "
Width of opening.....	3 " 0 "
Height of opening.....	2 " 0 "

Price of Red Face and Moulded Brick necessary to lay up this Mantel, including tile for hearth and fire brick for back.....	\$25 00
Price of Buff.....	34 00

This price includes packing and delivery on board cars Milton.





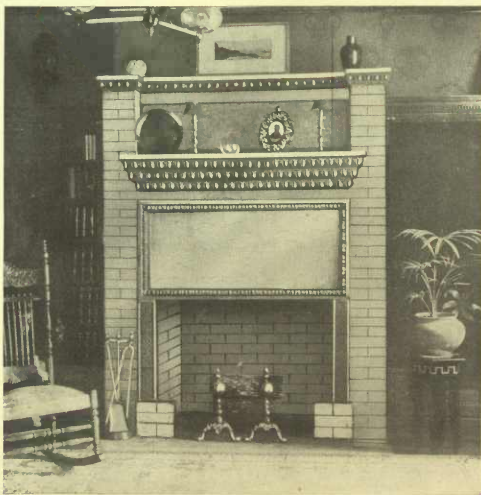
Sketch No. 33

Width of breast.....	6 feet 0 inches
Height of mantel.....	4 " 10 "
Width of opening.....	3 " 0 "
Height of opening.....	2 " 0 "

Price of Red Face and Moulded Brick necessary to lay up this Mantel, including tile for hearth and fire brick for back..... \$34 00  
 Price of Buff..... 44 00

This price includes packing and delivery on board cars Milton.





Sketch No. 34

Width of breast.....	5 feet 6 1/2 inches
Height of mantel.....	7 " 0 "
Width of opening.....	3 " 5 "
Height of opening.....	2 " 7 "
Width between hobs.....	2 " 10 1/2 "

Price of Red Face and Moulded Brick necessary to lay up this Mantel, including tile for hearth and fire brick for back..... \$40 00

Price of Buff..... 52 00

This price includes packing and delivery on board cars Milton.



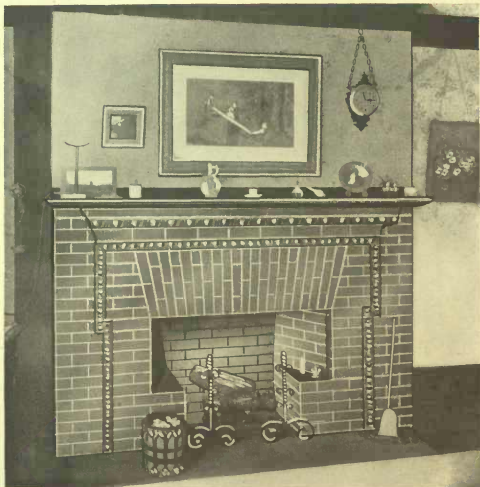


**Sketch No. 35**

Width of breast.....	.6 feet 0 inches
Height of mantel.....	5 " 0 "
Width of opening.....	2 " 8 "
Height of opening.....	2 " 7 "
Price of Red Face and Moulded Brick necessary to lay up this Mantel, including tile for hearth and fire brick for back.....	\$30 00
Price of Buff.....	41 00

This price includes packing and delivery on board  
cars Milton.





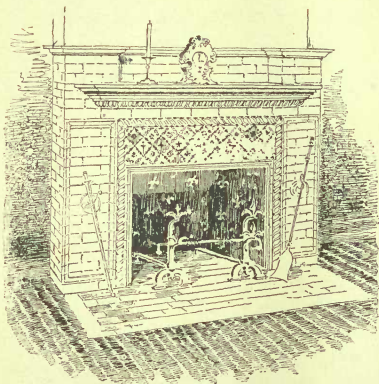
Sketch No. 36

Width of breast.....	6 feet 6 inches
Height of mantel.....	4 " 7 "
Width of opening.....	3 " 6 "
Height of opening.....	2 " 5 "
Width between hobs.....	2 " 2 "

Price of Red Face and Moulded Brick necessary to lay up this Mantel, including tile for hearth and fire brick for back..... \$30 00  
 Price of Buff..... 28 00

This price includes packing and delivery on board cars Milton.





**Sketch No. 37**

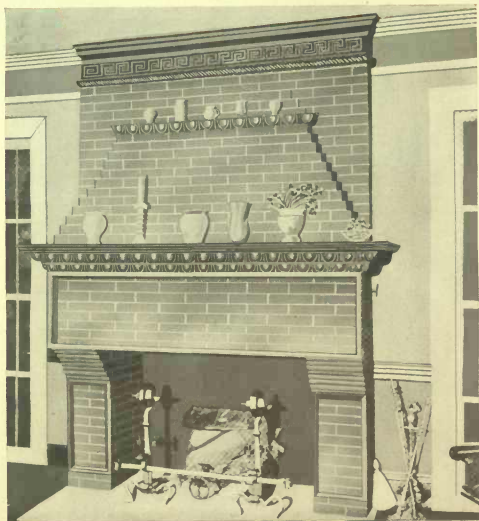
Width of breast.....	5 feet 5 inches
Height of mantel.....	5 " 2 "
Width of opening.....	3 " 0 "
Height of opening.....	2 " 7 "

Price of Red Face and Moulded Brick necessary to lay up this Mantel, including tile for hearth, glazed tile in panel above fireplace opening, and fire brick for back..... \$30 00

Price of Bufl..... 38 00

This price includes packing and delivery on board cars Milton.



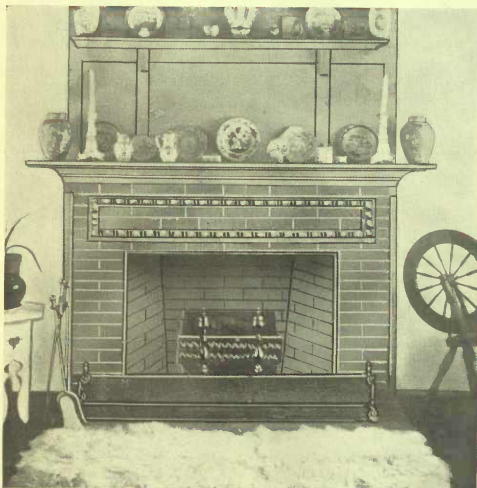


**Sketch No. 38**

Width of breast.....	6 feet 6 inches
Height of mantel.....	11 " 0 "
Width of opening.....	4 " 6 "
Height of opening.....	3 " 2 "
Price of Red Face and Moulded Brick necessary to lay up this Mantel, including tile for hearth and fire brick for back.....	\$65 00
(Price of Buff.....	85 00

This price includes packing and delivery on board cars Milton.





**Sketch No. 39**

Width of breast.....	5 feet 0 inches
Height of mantel.....	3 " 7 "
Width of opening.....	3 " 0 "
Height of opening.....	2 " 5 "
Price of Red Face and Moulded Brick necessary to lay up this Mantel, including tile for hearth and fire brick for back.....	\$20 00
Price of Buff.....	28 00

This price includes packing and delivery on board cars Milton.







MILTON PRESSED BRICK CO. LIMITED



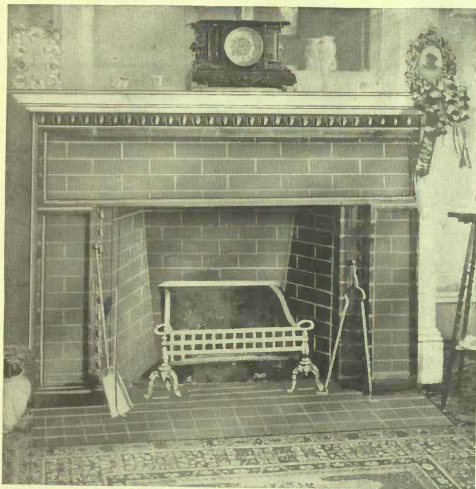
Sketch No. 40

Width of breast.....	5 feet 10 inches
Height of mantel.....	3 " 11 "
Width of opening.....	3 " 0 "
Height of opening.....	2 " 10 "

Price of Red Face and Moulded Brick necessary to lay up this Mantel, including tile for hearth and fire brick for back.....	\$25 00
Price of Buff.....	35 00

This price includes packing and delivery on board cars Milton.





Sketch No. 41

Width of breast.....	4 feet 8 inches
Height of mantel.....	3 " 7 "
Width of opening.....	2 " 8 "
Height of opening.....	2 " 5 "

Price of Red Face and Moulded Brick necessary to lay up this Mantel, including tile for hearth and fire brick for back.....	\$25 00
Price of Buff.....	35 00

This price includes packing and delivery on board cars Milton.





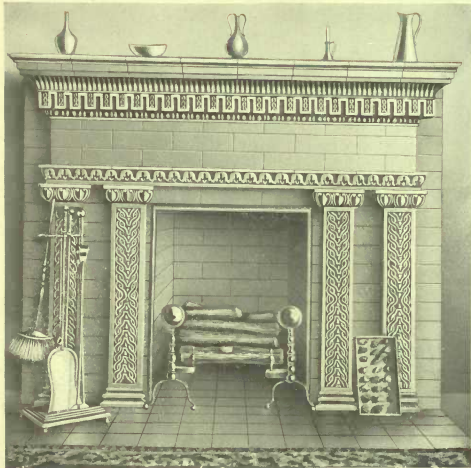
Sketch No. 42

Width of breast.....	8 feet 0 inches
Height of mantel.....	6 " 10 "
Width of opening.....	4 " 0 "
Height of opening.....	2 " 10 "

Price of Red Face and Moulded Brick necessary to lay up this Mantel, including tile for hearth and fire brick for back..... \$47 00  
 Price of Buff..... 65 00

This price includes packing and delivery on board cars Milton.





Sketch No 43.

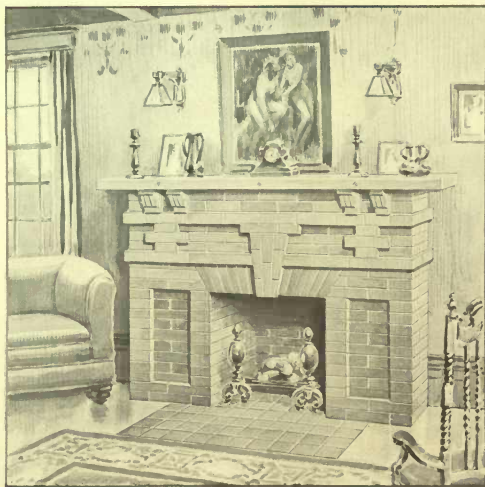
Width of breast.....	4 feet 11	inches
Height of mantel.....	3 "	7 "
Width of opening.....	1 "	9 "
Height of opening.....	2 "	2½ "

Price of Red Face and Moulded Brick necessary to lay up this Mantel, including tile for hearth and fire brick for back.....	\$25 00
Price of Buff.....	34 00

This price includes packing and delivery on board cars Milton.



**MILTON PRESSED BRICK CO. LIMITED**



**Sketch No. 44**

Width of breast.....	5 feet 5 inches	
Height of mantel.....	5 "	0 "
Width of opening.....	2 "	7 "
Height of opening.....	2 "	6 "
Price of Red Brick necessary to lay up this Mantel, including tile for hearth and fire brick for back.....		\$20 00
Price of Buff.....		25 00
Fumed Flash.....		25 00
Fiske Tapestry Red.....		30 00
Fiske Tapestry Grey or Golden.....		35 00

This price includes packing and delivery on board cars Milton.





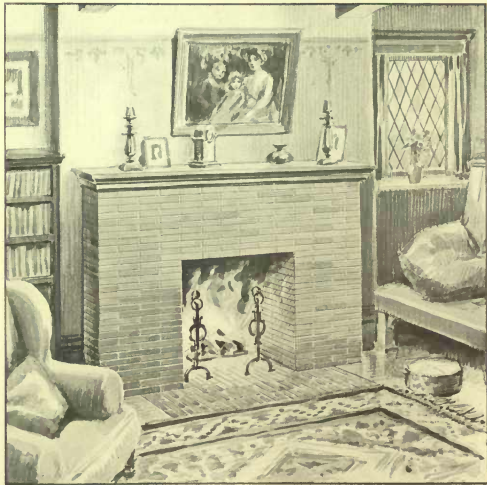
**Sketch No. 45**

Width of breast.....	6 feet 8 inches
Height of mantel.....	7 " 5 "
Width of opening.....	3 " 2 "
Height of opening.....	2 " 5 "
Price of Red Brick necessary to lay up this Mantel, including tile for hearth and fire brick for back.....	\$30 00
Price of Buff.....	35 00
Price of Fumed Flash.....	40 00
Price of Fiske Tapestry Red.....	45 00
Price of Fiske Tapestry Grey or Golden.....	50 00

This price includes packing and delivery on board cars Milton.



MILTON PRESSED BRICK CO. LIMITED



Sketch No. 46

Width of breast.....	7 feet 2 inches
Height of mantel.....	5 " 0 "
Width of opening.....	3 " 2 "
Height of opening.....	3 " 2 "

Price of Red Roman Brick necessary to lay up this Mantel, including tile for hearth and fire brick for back.....	\$25 00
Price of Buff Roman Brick.....	35 00

This price includes packing and delivery on board cars Milton.





Sketch No. 47

Width of breast.....	6 feet 0 inches
Height of mantel.....	4 " 6 "
Width of opening.....	3 " 3 "
Height of opening.....	2 " 8 "

Price of Red Brick necessary to lay up this Mantel, including tile for hearth and fire brick for back.....	\$18 00
Price of Buff.....	22 00
Price of Fumed Flash.....	25 00
Price of Fiske Tapestry Red.....	30 00
Price of Fiske Tapestry Grey or Golden.....	35 00

This price includes packing and delivery on board cars Milton.





MILTON PRESSED BRICK CO. LIMITED



Sketch No. 48

Width of breast.....	6 feet 4 inches
Height of mantel.....	4 " 4 "
Width of opening.....	2 " 10 "
Height of opening.....	2 " 5 "

Price of Red Brick necessary to lay up this Mantel, including tile for hearth and fire brick for back.....	\$18 00
Price of Bufl.....	22 00
Price of Fumed Flash.....	25 00
Price of Fiske Tapestry Red.....	30 00
Price of Fiske Tapestry Grey or Golden.....	35 00

This price includes packing and delivery on board cars Milton.





## Process of Manufacture

**M**ILTON BRICKS are not made in the old soft mud, wet-clay manner of the old days, but by the semi-dry process from shale. This shale, which is clay in the process of formation into rock, is quarried from the wonderful quarries at Milton and ground to a fine powder. It is then moulded into MILTON BRICK under a pressure of 100 tons. The brick is then burned in downdraft kilns by a scientific process so as to withstand the hottest fire, and to resist enormous pressure. MILTON BRICKS are permanent and improve with age.

## Colors

We make red, brown and buff bricks. At least these are the three basic colors, but with our scientific burning in the kilns we are able to produce an extensive range of color combinations. The beautiful shades of buff and red are combined in pleasing effect and it is impossible to describe or illustrate the wonderful shades and tints in our fire-flash bricks. Fire-flash bricks are burned so as to bring out tones varying from dark red to buff, and from light brown to dark brown, the graduation of color of light and shade is truly beautiful.

When ordering or writing for samples, classify the brick as follows: No. 1 Red, No. 1 Light Buff, No. 1 Pink Buff, No. 1 Light Flash Buff, No. 1 Medium Flash Buff, No. 1 Dark Flash Buff, No. 1 Fumed Flash, and No. 1 Red Fire Flash.

## Size of Brick

Our Square Brick are  $8\frac{3}{8} \times 4\frac{1}{8} \times 2\frac{3}{8}$  inches.

## Moulded Brick

Moulded Bricks, when used in the right manner and with a little care for combination, may be made to produce many rich and beautiful effects. They are now being used extensively for doorways, architraves, cornices, quoins, panels, sill courses, belt courses, etc.

In presenting this catalogue to architects and patrons we trust that the different patterns shown may aid in getting up tasty designs.

We would like architects to let us know as early as possible if they intend using any moulded bricks, so that we may be sure to have them in stock and avoid delay in shipping. This notification will not be considered an order, as we can put brick in stock if not called for.

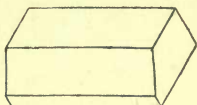
In sending orders for Moulded Brick, at least six weeks should be allowed so as to get orders out properly. We send samples to any address and prepay charges on same.

## Special Moulds

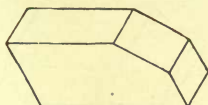
Should architects desire special moulds for their work, we are always willing to make them, and make cost as reasonable as possible.



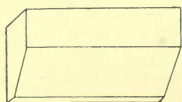
MILTON PRESSED BRICK CO. LIMITED



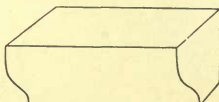
No. 100



No. 104



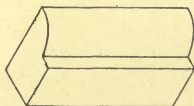
No. 101



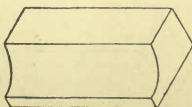
No. 108



No. 102. Made any angle wanted.



No. 110

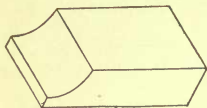


No. 112

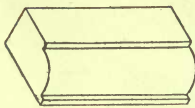




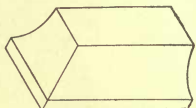
MILTON PRESSED BRICK CO. LIMITED



No. 114



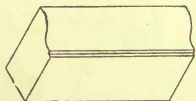
No. 118



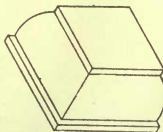
No. 115



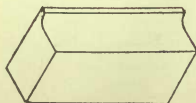
No. 120



No. 116

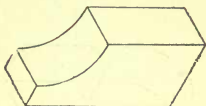


No. 122



No. 124





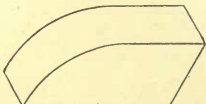
No. 126



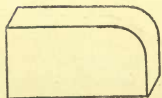
No. 132. 3-inch radius.



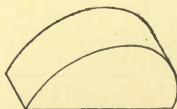
No. 128



No. 134. 4-inch radius.



No. 130. 2-inch radius.

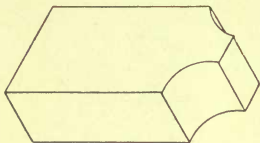


No. 136

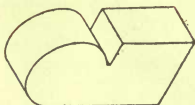


No. 138

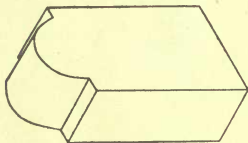




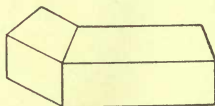
No. 140



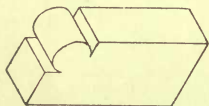
No. 146. 4-inch bead.



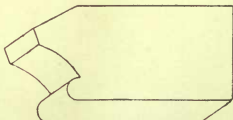
No. 142



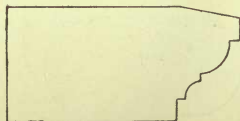
No. 148. Made any desired angle.



No. 144. 2-inch bead.

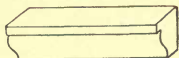


No. 150

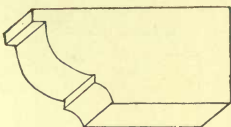


No. 154

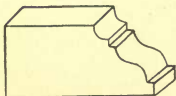




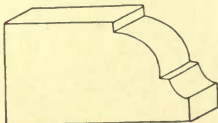
No. 155



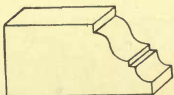
No. 160. Reverses with 162.



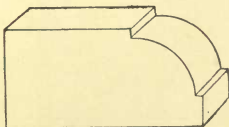
No. 156



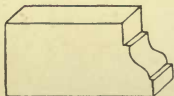
No. 162. Reverses with 160.



No. 158. Reverses with 156.



No. 164

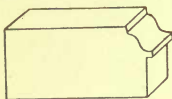


No. 166



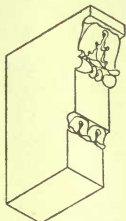


MILTON PRESSED BRICK CO. LIMITED

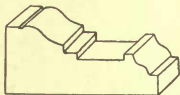


No. 168

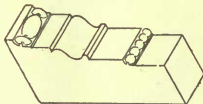
These three work together for jambs.



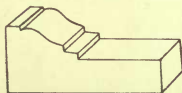
No. 174



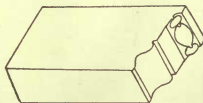
No. 170



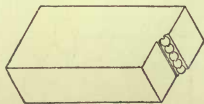
No. 176



No. 172



No. 178

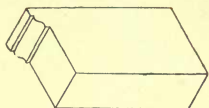


No. 180

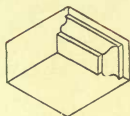




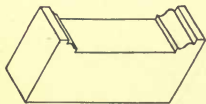
MILTON PRESSED BRICK CO. LIMITED



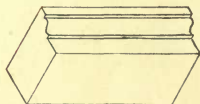
No. 182



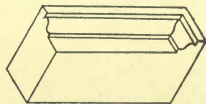
No. 182C.



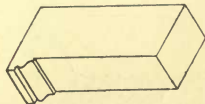
No. 182A.



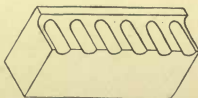
No. 182D.



No. 182B.

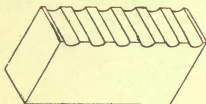


No. 184

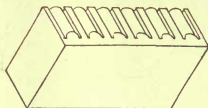


No. 185





No. 186



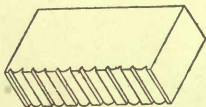
No. 191



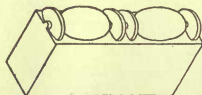
No. 188



No. 192



No. 190



No. 194



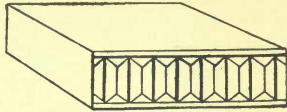
We keep the following:

7-inch Radius  
 8 " " "  
 18 " " "  
 28 " " "  
 4-foot Radius  
 5 " " "

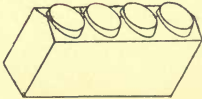
6-foot Radius  
 7 " " "  
 8 " " "  
 9 " " "  
 10 " " "  
 11 " " "



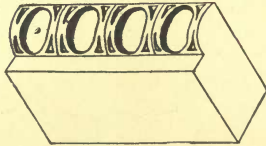
MILTON PRESSED BRICK CO. LIMITED



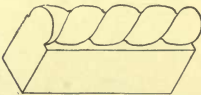
No. 196



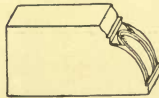
No. 198



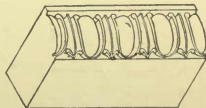
No. 204



No. 200



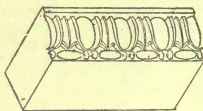
No. 206



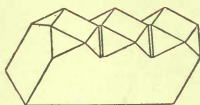
No. 208



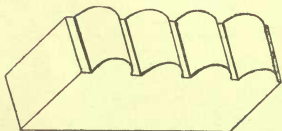
MILTON PRESSED BRICK CO. LIMITED



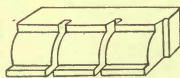
No. 210



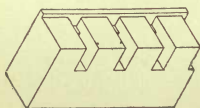
No. 216



No. 212

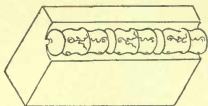


No. 218

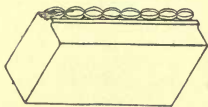


No. 220

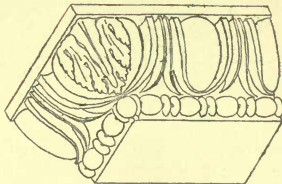




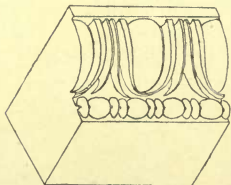
No. 224



No. 226

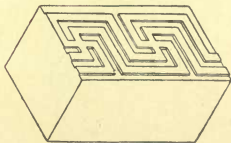


No. 230—Return.



No. 228

5 x 10. Made also with long back.

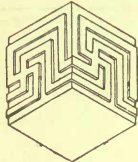


No. 232

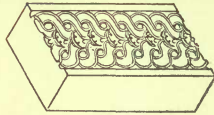


No. 233

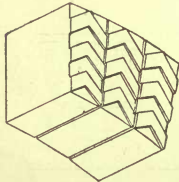




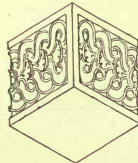
No. 234



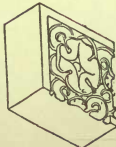
No. 240



No. 236. Radius.

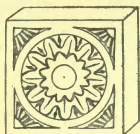


No. 242

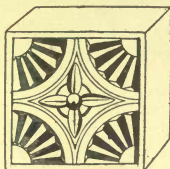


No. 244

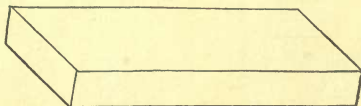




No. 276

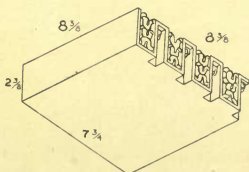


No. 278

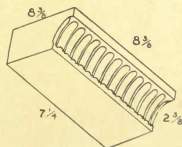


No. 278

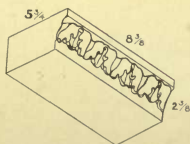
Roman Brick. 12 x 4 x 1½, also 10 x 5 x 1½



No. 279

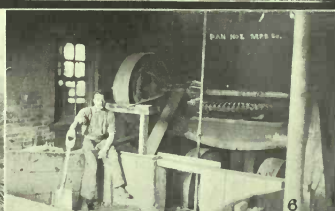


No. 280



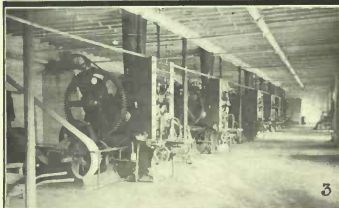
No. 281





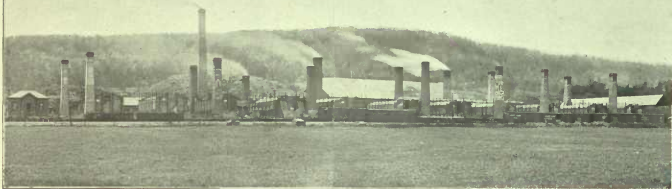
No. 1. Drilling, preparing for blasting. No. 2. Blasting the shale. No. 3. Shale beds. No. 4. Hauling shale to grinding pans. No. 5. Shale beds. No. 6. Grinding pan. No. 7. Birdseye view of plant and farm.





No. 1. Grinding pans. No. 2. Hoppers through which the ground shale passes into the presses. No. 3. Press room, where the ground shale is moulded into bricks. No. 4. Setting brick in kiln, ready for burning. No. 5. Firing a kiln. No. 6. Press for making special brick. No. 7. Boiler room. No. 8. Engine room.

# THE MILTON PRESSED BRICK CO'S WORKS. MILTON, ONT.



Show Room in Toronto Office, 50 Adelaide Street W.  
The walls of this room consist of eleven solid brick panels, each panel representing a different grade of brick.



