

ALADDIN HOMES



SOVEREIGN
SYSTEM

Mr. J. S. Fort Haringham

CANADIAN ALADDIN CO.

TORONTO, ONT. LIMITED

OFFICE OF THE
PRESIDENT.

Dear Friend:--

We hope you will like this book of homes. It is our best effort.

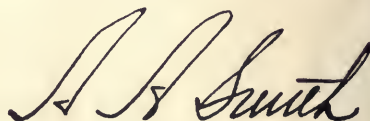
We have a fatherly pride in the Sovereign System, which we originated.

We are proud of "Readi-Cut" efficiency which saves you one-third of your money, or better--gives you one-half MORE HOME for your money.

But our GREAT pride is in our designs. They are the finest we have offered, and we hope you will like them.

Thank you for sending for "Aladdin Homes." We would appreciate your courtesy if you would acknowledge receipt of it. It was produced at considerable expense, and we would like assurance that it has not been lost in the mail.

Cordially,



President.

INDEX OF SUBJECTS

Admissions	92	Industrial Housing	16	Saving	9-10
Cost of Erection	75	Interior Finish	13	Specifications	11-13
Department of Service	14	Lath and Plaster	11	Sovereign System	6
Freight	5	Lumber	11	Summer Cottages	76
Garages	92	Masonry	11	Terms	5
Guaranty	5	Materials Used	1	Waste	9
		References	5		



ALADDIN HOMES

COMPLETE CITIES

or SINGLE HOMES

QUICK SHIPMENT
QUICK RESULTS
SERVICE PLUS

Manufactured by

CANADIAN ALADDIN CO.
TORONTO, ONT. LIMITED



ALADDIN HOMES

SOVEREIGN SYSTEM



W. J. SOVEREIGN

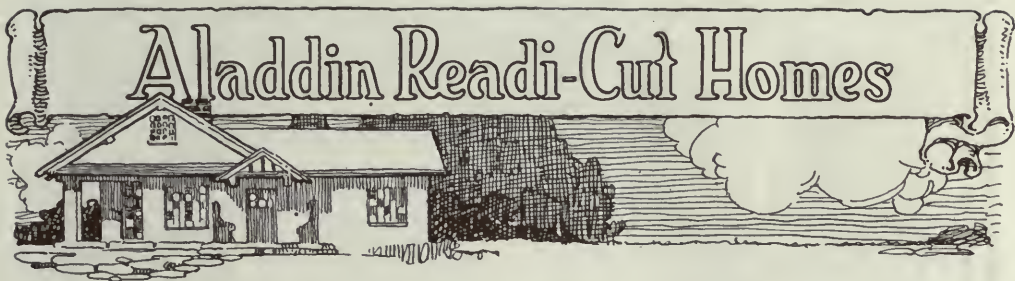
A TRIBUTE

Like most modern developments in the economics of manufacturing and distributing, the Aladdin Read-Cut System seems very obvious, when we look back on it with the perspective of its twelve years of phenomenal growth. We wonder not so much at the insight of Messrs. W. J. and O. E. Sovereign in foreseeing its possibilities as at the blindness of the doubters who obstructed its early progress. With Aladdin Houses in practically every country in the world and the System a success beyond the carping of the severest critics,

we tend to lose sight of those early struggling days when it was by no means so sure that Aladdin was to be placed permanently on the business map. The handling of any business, even an assured success, requires foresight and intelligence. But the creating of a new industry from an idea, and the developing of the industry along new lines, in unexplored fields, until it is world-wide in its scope, calls for something much rarer than foresight and intelligence; it calls for courage—the courage of conviction, and that further courage that is needed numberless times when conviction falls short of convincing. More power to men of the "Sovereign" stamp who are clear headed to see things as they are, prophetic of future possibilities, and with the courage of an idea. That "the world does move" is due to an occasional Mr. Sovereign.



O. E. SOVEREIGN



MANUFACTURED IN OUR MILLS IN ONTARIO, NEW BRUNSWICK AND BRITISH COLUMBIA, ACCORDING TO THE MOST APPROVED METHODS OF MODERN CONSTRUCTION, SHIPPED COMPLETE. KNOCKED DOWN FLAT, READY FOR ERECTION . . . ANYONE CAN PUT THEM UP . . . THEY DIFFER FROM OTHER HIGH - CLASS DWELLINGS ONLY IN THEIR MANIFEST SUPERIORITY AND LOWER COST. THIS DIFFERENCE — A MATTER OF ONE-THIRD — IS THE SAVING WE MAKE FOR OUR CUSTOMERS.

Catalogue No. 15



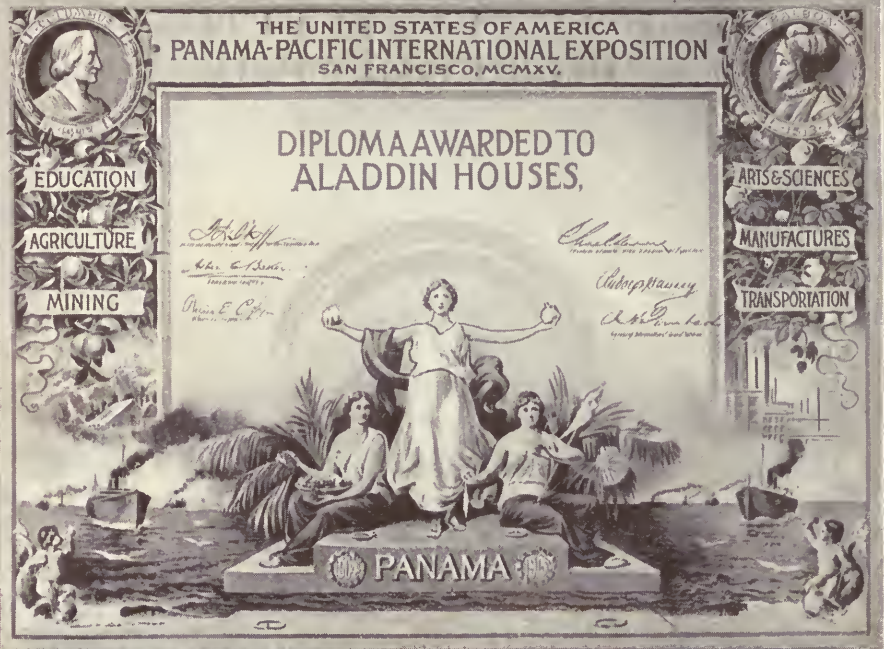
CANADIAN ALADDIN CO.
TORONTO, ONT. LIMITED

GENERAL OFFICES
TORONTO - ONTARIO



Home Office, C.P.R. Building
Toronto, Ont.

. . . ADDRESS ALL COMMUNICATIONS TO THE GENERAL OFFICES . . .



Evidence of Aladdin's Leadership

ALADDIN has been honored the past two or three years in different ways, but is most proud of the medals awarded by two great expositions. The Panama-Pacific International Ex-



position, that most wonderful of all great World's Fairs, and the Michigan Agricultural Exposition granted "Les Grandes Prix," issuing diplomas as shown in photograph. The Panama-Pacific medal was issued upon the Model Cottage which Aladdin produced and erected for the government, while the Michigan Exposition Medal was the result of our building a Kentucky bungalow at the fair for the Northern Michigan Development Bureau. Official record is made in the Diploma that The Aladdin Company originated, perfected and established the Read-Cut System of Construction. These facts are quoted here merely as additional evidence of Aladdin's leadership in all things pertaining to Scientific Home Building. But the greatest test of leadership is the universal record of satisfaction to our customers.

The Read-Cut House at a Glance

WE SELL YOU

A Substantial, Warm, Comfortable, Attractive, Completely Fabricated HOUSE, ready to be nailed together and occupied, for less than you can buy the rough material.

GUARANTY

We guarantee all Aladdin Houses to be scientifically designed, substantially constructed, and of first quality materials.

We guarantee that there will be an ample quantity of all materials and that they will be free from defects of workmanship.

We further guarantee that all materials will arrive at destination without damage in transit.

TERMS

One-third cash with the order and the balance when shipped. Delivered free on board cars at our nearest mill. A discount of 5% is allowed from list prices where full amount is sent with order. These terms are not meant as a reflection on your financial standing, but are our invariable rule. For your convenience we have shown the list price and the net price with each house.

ILLUSTRATION:—List price of house, \$1000; one-third with the order, \$333; balance, \$667, when shipment is made: Or \$950 if all sent with the order. Cash discounts are usually large enough to pay the freight charges.

NOTE.—Readi-Cut houses are shipped under the classification of "Lumber" with the hardware, paint, etc., under their respective classifications. You pay freight only on what you use. None on waste.

OUR REFERENCES

The Standard Bank of Canada, or the Bank of Ottawa, Toronto, Ont., OR ANY PURCHASER OF AN ALADDIN READI-CUT HOUSE.

YOU GET

SILLS, cut to fit.

Floor and ceiling JOISTS, cut to fit.

RAFTERS, all accurately cut to fit.

Wall and Partition STUDDING, cut to fit.

GABLE STUDDING mitred to slope of rafters.

SHEATHING LUMBER for outside walls, cut to fit.

SIDING, tongued and grooved, cut to fit, and bundled, or bevelled siding.

GABLE SIDING, bevelled to fit, and bundled.

SHEATHING for SUB-FLOOR, cut to fit.

FLOORING, matched and bundled, cut to fit.

V-JOINT Sheathing for box cornices, bundled, cut to fit.

SHINGLES, XXX B.C. Cedar (or equal quality domestic), or Patent Roofing.

PORCH FLOORING, cut to fit and bundled.

PORCH COLUMNS, porch joists, hand-rail and balusters, cut to fit.

STEPS for front and rear, cut to fit and bundled.

Outside FINISHING LUMBER, cut to length, bevelled or mitred, and bundled.

MOULDED BASE BOARD and QUARTER ROUND for interior walls.

CORNER BASE BLOCKS.

CROWN MOULD, BED MOULD, COVE MOULD, etc.

STAIRWAYS for all two-storey houses, with the necessary newels, hand-rails and balusters, bundled, cut to fit.

DOORS with frame, and trim both sides, cut to fit and bundled.

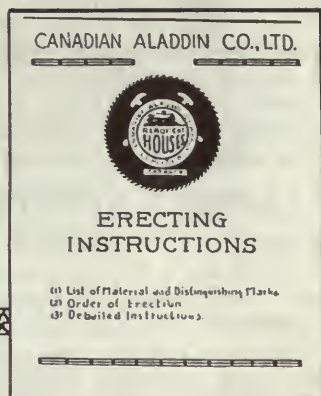
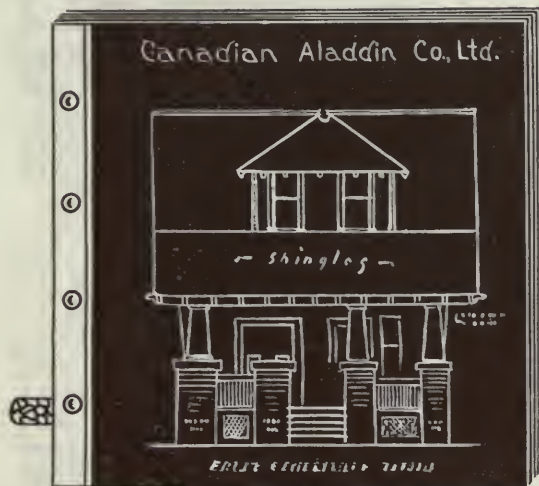
WINDOWS with sash, glass, frame and trim cut to fit and bundled.

ALL HARDWARE, including mortise locks, knobs, hinges, window fittings, galvanized iron flashings and building paper.

NAILS of proper size for the entire house.

Best readi-mixed PAINTS for two coats for the woodwork (inside and outside), any color. PUTTY, OIL and SHELLAC.

PLASTER BOARD, FIBRE BOARD, or LATH and PLASTER, to finish the interior walls.



Complete Plans and Plain Instructions for Erecting the Building

ALADDIN HOUSES



FOURTEEN YEARS OF ALADDIN SUCCESS

Aladdin Read-i-Cut Houses—the Sovereign System of Construction—may be new to you, but the system was planned and put in operation fourteen years ago. Its merit, its wonderful simplicity, was immediately recognized by the public. The result is that each year the history of the business shows a doubling and trebling in the volume and number of houses sold. You know that this wonderful growth would be impossible for any manufacturing institution, or any business house, unless customers became friends—unless real service was rendered—honest value, square business methods, and integrity prevailed.

INTEGRITY—THE KEYNOTE OF THE ALADDIN POLICY

In advertising our System broadcast over the country, we have given the public a Bond with which we cannot take liberties. We must fulfill every expectation that our advertising arouses, or lose part of our investment. We must keep up the quality; we must make the houses make good or we will lose our established reputation. We are legally responsible and we desire to be morally responsible. "We're not satisfied unless you are."

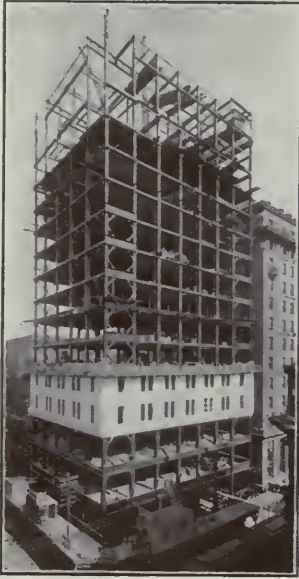
We handle only one grade of material—the best.

We have only the one price—the lowest.

THE ALADDIN SYSTEM IS BUILT ON THIS PRINCIPLE

Modern power-driven machines can do better work at lower cost than hand labor. Then every bit of work that can be done by machines should be so done. The steel worker with a little hack-saw trying to cut and fit the steel girders of the modern skyscraper would be no more out of place than the modern carpenter cutting sills, joists, and rafters. The skyscraper framework is cut to fit by machines is the steel mills, marked and numbered ready for erection. The lumber of the Aladdin house is cut to fit by machines in the Aladdin mills, marked and numbered ready for erection. The steel system is twenty-five years old—the Aladdin System is fourteen years old.

THE STEEL SKYSCRAPER IS READI-CUT



IN THE accompanying illustration we show the steel skeleton of the building which now houses our Home Office—The Canadian Pacific Railway Building, Toronto. The cut shows in a striking manner the application of the Readi-Cut system to steel construction. Each column, girder, joist and brace of this towering structure was cut to fit in the steel mills, marked with identifying letters and numbers, shipped to the building site, and the whole assembled with bewildering speed. There was no cutting or fitting on the ground. The measuring, sawing and fitting were done in the steel mills. How can they do this work? Why, the structural engineers know how. It's their particular business. It's their life work. So it is with Aladdin Readi-Cut houses. The same principles govern each job. It's the same system.

FROM "THE CANADA LUMBERMAN"

"Year after year the price of carpenter labor has been advancing, thus making the cost of lumber higher when in position. Framing material will eventually have to come to the building trimmed to length, and I fail to understand why this fact is not more generally realized. The piece stuff of the future will be furnished to the building ready for position. This thing of cutting and cutting with a handsaw at the building site until it fits, is too costly."

"HUNTING FOR PIECES"—"CONTRACTOR"

Of course, the Aladdin Readi-Cut System receives adverse criticism from some contractors, lumber dealers, and others. This criticism comes chiefly from those who have had no experience with or knowledge of Aladdin houses. Self-interest here prompted by loss of profit begets the antagonism.

One of the most amusing remarks made is that the builder of an Aladdin house will lose as much time hunting out his material and finding the right piece as he will save by the Readi-Cut System. Of course this remark on the face of it is an admission that time is saved by the Aladdin System. However, any thought about time lost in hunting pieces is immediately dispelled when you see the simple system of laying out materials that accompanies the instructions for every house.

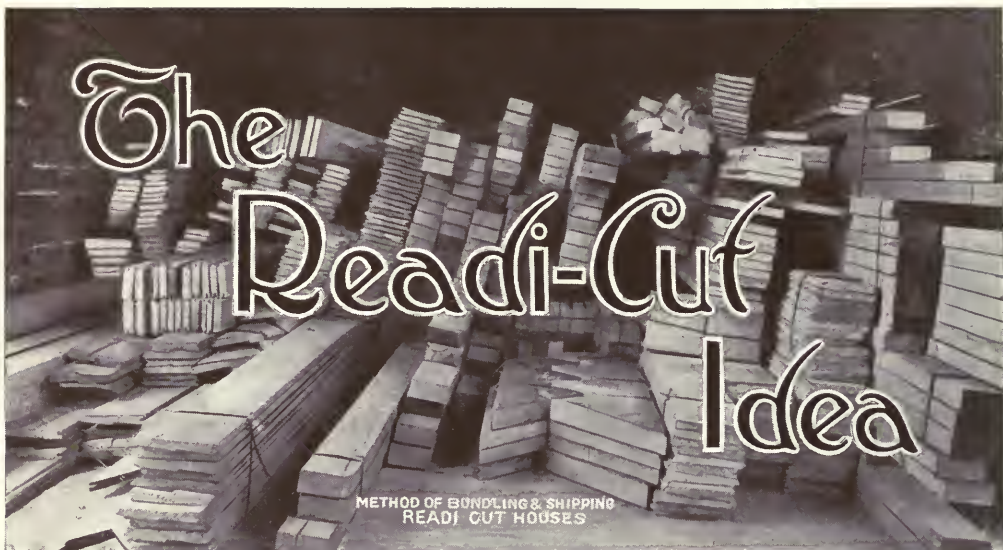
THIS CATALOGUE OUR ONLY SALESMAN

With this catalogue, you are able to keep the profits in your own pocket that you would ordinarily pay to your local dealers. Because we do not sell through dealers, they can't add their four to five hundred dollars profit to the goods you buy from us. You keep this money yourself.

When your dealer says "Don't buy your lumber out of town," ask him where he buys the lumber he wants to sell you.

You see he buys his lumber out of town and the only money that stays in your town is the dealer's profit. Wouldn't you rather have it in your pocket than in his?

This catalogue makes possible this saving and many others. Pick the house that meets your need, and write to us. We have many interesting things to tell you about it.



IN BUILDING by the old methods you would probably buy your window and door frames made up—possibly you would have your main and basement stairs partly worked out—you would certainly buy your doors, columns, and newel posts finished, and you would have all your mouldings run at the mill.

THAT IS—YOU WOULD BUY THESE ITEMS READI-CUT OR PARTLY SO.

The reason being—that a mill equipped with modern power-driven machines can do better work at a lower cost than hand labor. Every bit of work that CAN be done by machines, SHOULD be so done.

ALADDIN HOUSES ARE COMPLETELY READI-CUT

We make the same percentage of saving for you on your whole bill, that you now hope to make on a few items.

It is the system that has made the great structural steel buildings possible—applied to frame construction.

We turn out in our Mills, the complete house from sills to ridge, readi-cut to fit.

We include all paint and hardware down to the smallest nail or hinge.

We include all wall board or lath and plaster, and the interior trim.

We include a graphic set of Plans on which are indicated the location of every piece of lumber in the house.

We include a set of simply worded Instructions which are so plain and comprehensive as to render any skilled supervision of the work unnecessary.

We sell you this complete house ready to be nailed together and occupied for less than you can buy the rough material locally.

The work involved in the erection of the house is two-thirds done when the house arrives on the building site.

We save you two-thirds of the actual labor and cut in half the cost of the one-third that remains.

The work of placing the materials can be done by any man who can read and drive nails.

WE SAVE YOU ONE-THIRD ON THE FINISHED HOUSE.

Where the Saving Comes In

FIRST—We buy raw materials in large quantities, at the lowest prices obtained by big manufacturers.

SECOND—We buy for cash and cash commands a premium at all times.

THIRD—We do not sell on credit and have no 5% or 10% for Bad Accounts charged in the prices of the houses.

FOURTH—We eliminate high priced hand labor entirely. In our Mills we use high speed automatic machinery—and cheap labor. The cheapest labor is quite good enough to put the material in place after it arrives on the building site.

FIFTH—We do in our Mills two-thirds of the actual labor.

SIXTH—We cut in half the cost of the labor that is still necessary. A two dollar a day man can nail the pieces in place where it would require a four dollar man to fit them.

SEVENTH—We eliminate the waste pile.

Around every completed house built by the old methods there has accumulated a pile of waste material. This is due to four causes:


- (1) Careless designing.
- (2) Careless figuring of quantities.
- (3) Careless use of unsuitable lengths.
- (4) Careless errors in cutting.

The purchaser of an Aladdin house buys and pays for exactly enough material to build his house, plus a small addition to guard him against delay due to any unfortunate accident on the job.

CUTTING THE "CUTTING COSTS"

We illustrate below one of the many minor economies which become possible in mills such as ours which are day after day repeating the same operations. It is natural that each workman should become an expert in his own particular duty, with the result that he discovers short cuts, and develops simple methods for the saving of time and material.

ILLUSTRATION—TWENTY FEET OF LUMBER FROM A SIXTEEN-FOOT BOARD—HOW IT IS DONE

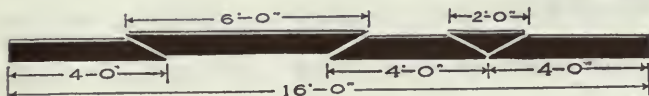
To cut the sheathing for this gable 



The carpenter usually takes an eight-foot board, a six-foot board, a four-foot board and a two-foot board and cuts them this way:



The carpenter requires twenty feet of lumber for the job. We take a sixteen-foot board and cut it this way:



and get twenty feet of lumber at the cost of sixteen feet—and YOU get the saving.



Other Points of Readi-Cut Economy

ECONOMY OF DESIGN

A point in frame building design which is commonly overlooked, is that all lumber is manufactured in certain stock lengths—by keeping this in view when plans are being drawn, a great deal of waste can be avoided.

FOR INSTANCE:—A house 24' 0" long is usually quite as satisfactory as one 24' 3" long and is much more economical.

A window or door placed six feet from a sidewall will look quite as well as it would six feet one inch from the wall, and will not involve any waste of siding or sheathing.

You would not increase the width of a room from 13' 6" to 13' 8" if you knew that it made it necessary for a couple of dozen second floor joists to be increased two feet in length.

Careless designing easily wastes 18% of the material.

This is one of the points on which we specialize "Design for Economy in Cutting."

NO COSTLY DELAYS

In building by ordinary methods there is always an annoying and costly series of delays due to failure of material to arrive on time, materials being unsuitable when they do arrive, insufficient quantities being ordered, etc.

Under the "Readi-Cut" System this source of loss is entirely eliminated; Aladdin houses are delivered complete in one shipment, and you will not at any time have your workmen idle for lack of material to work with.

MINIMUM FREIGHT

In the cost of every finished house there is an item of freight; it may not appear in the Bills as freight, but it is there just the same. It is the Railway Company's "pound of flesh" for moving your lumber from its woods source to your building site. We cannot control the Company's rate as that is in the hands of the Railroad Commission, but we can and do reduce their charge to a minimum by cutting away all waste and reducing the net weight of your lumber to a minimum. You pay freight on what you use, none on waste.

NO CHARGE FOR PLANS AND SUPERVISION

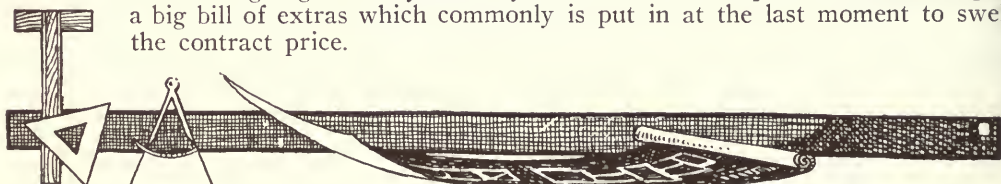
A consulting architect would charge you from five to ten per cent. of the estimated value of your house, for the drawing of the Plans and for the work of supervising the erection.

We reduce the cost of Plans to a negligible quantity by dividing it among a hundred or more purchasers of each style of house.

Our Plans, Instructions, and our "Readi-Cut" method, make any expert supervision unnecessary.

NO BILL FOR EXTRAS

You know before you invest a dollar, just what the complete house will look like and what it is going to cost you, and you are not called upon in the end to pay a big bill of extras which commonly is put in at the last moment to swell the contract price.



General Specifications

We Absolutely Guarantee to Furnish Sufficient Material to Finish the House in Accordance with the Following Specifications :

WE ABSOLUTELY GUARANTEE that all our materials, whether the Fir and Cedar of our Western shipments, or the Pine, Spruce and Hemlock of our houses shipped from the East, will be of such quality as to command in all communities the uniform rating of "the best."

WE GUARANTEE that all bearing timbers and lumber will be of a size in accordance with the best engineering and architectural practice.

THE MATERIALS WE USE LUMBER

Every piece of lumber in an "Aladdin House" has been carefully selected from thoroughly seasoned first-class dry stock, especially selected for quality. It is inspected by experienced men, and if not up to a high standard is not used. This is an extremely important point, and you should consider it carefully. Our facilities for buying high grades are unexcelled by any manufacturer in the country. This means much to the purchaser—to know that all the materials are the best, that they are well seasoned, sound, and of first quality throughout. All trim material is No. 1 stock and in common with Doors, Sash and Stairs is given a beautiful finish. Fir is supplied in place of Pine in shipments from our Vancouver mills. You will have absolutely no cause for complaint of any of the materials supplied you. Can you say as much of those that can be purchased in your neighborhood?

HARDWARE

Our hardware comprises nails of all sizes and kinds required in doing a first-class job of work—best quality glass for windows and glass doors—galvanized iron flashings for hips, valleys, and window and door openings—window and door hardware in oxidized old copper, or other tasteful finish of suitable size and pattern.

PAINTS

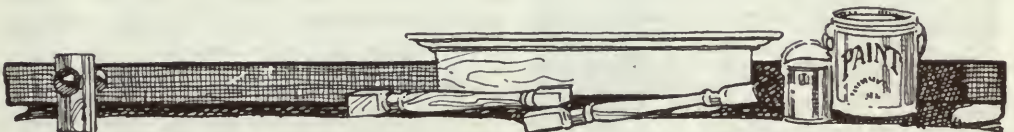
For all our houses we supply the very best quality of ready-mixed paints or stains manufactured or sold in Canada—pure linseed oil—orange shellac—and where specified, the best quality of shingle stain.

LATH AND PLASTER

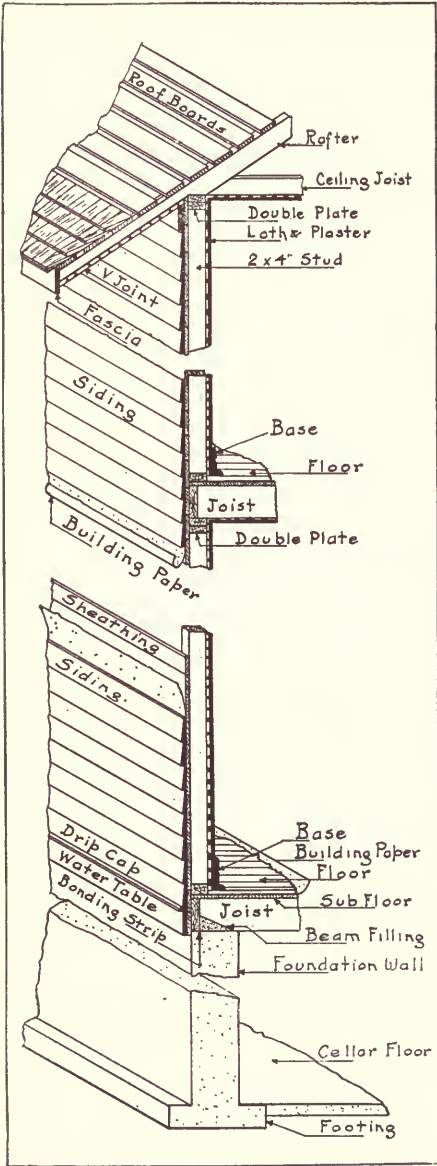
Lath and prepared hard wall plaster and material for putty coat supplied at the purchaser's option on any of our designs, in place of plaster board or fibre board.

MASONRY

All excavation and masonry work must be done on the site. No money would be saved by our including stone, brick or concrete, for every section of the country produces these materials and prices vary but little. We furnish the foundation plans and will give you estimates, if desired, on the quantities of materials required. Fire-places and chimneys can be placed wherever wanted in "Readi-Cut" houses.



Detail Specifications



Our Method of Construction

We furnish double floors with building paper between, for the ground floor of all our dwellings, and our outside walls, as shown by accompanying cut, are the last word in building construction. A plate is laid on the sub-floor and studding is set on this so that when the sheathing, builders' paper, and matched siding are placed on the outside of the studding, and the plaster board, lath and plaster, or fibre board, on the inside, the spaces in the wall between the studs are air-tight chambers which insulate the building from extremes of hot and cold weather better than solid brick. This construction, known and approved by the Building Departments of the Cities, and the Insurance Companies as a fire stop construction, prevents the circulation of air in the walls, and is ample to make our dwellings warm in the coldest climate.

FOUNDATIONS—When the house is to be placed on cedar posts or concrete piers we supply the necessary sills. When the house is to go on a masonry foundation we supply a heavy center sill only. We, of course, do not supply stone, concrete or brick for foundations, as they can commonly be purchased as cheaply in one locality as another. Do not start to put in your foundation without getting our blueprint Foundation Plan and our set of Instructions. The Instructions contain much valuable advice as to the laying out of building lines, the making of the excavation and the putting in of foundations of concrete, concrete blocks or brick; also information and estimates of costs for concrete cellar floors, chimneys, fireplaces, etc.

JOISTS—Our joists are sized for height and cut to length; and are of a strength in accordance with the best engineering practice.

SUB-FLOOR—A sub-floor of dressed inch lumber, cut to fit, is laid over the ground floor of all our dwellings.

STUDDING—2" x 4", dressed to uniform size, placed on 16" centers. All walls and partitions have 2" x 4" sill piece and 4" x 4" cap. Studs are doubled, over all door and window openings. All studding is accurately cut to fit.

WALL SHEATHING—The outside walls of all our dwellings are sheathed with 1" dressed lumber, cut to fit, which is covered with building paper before the Siding is put in place.

RAFTERS—2" x 4" and 2" x 6", all accurately cut to length, bevelled and notched.

ROOF SHEATHING—No. 1 Dressed Hemlock or Fir, to be spaced 2" apart. If roof boards are so spaced your shingles will last from five to ten years longer.

BUILDING PAPER—Dense, tough, fibre paper, overlying sub-flooring and outside wall sheathing.



SHINGLES—XXX British Columbia Cedar for Ontario and the West, and "Extras" for the Maritime Provinces.

SIDING—First quality, $\frac{7}{8}$ " matched siding, cut to fit, or bevelled siding.

PORCH COLUMNS—Of size and detail illustrated in cuts.

OUTSIDE FINISH—All No. 1 dressing stock, dressed four sides, cut to length and mitred for end-butts.

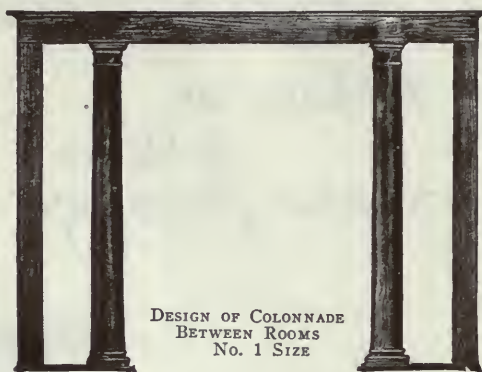
WINDOW AND DOOR FRAMES—Finest dressing stock.



GLASS AND PAINT—We supply star and double diamond glass for all windows and glass doors. We supply best quality Ready-mixed paint, linseed oil and shellac for two coats for the outside body of the house, outside trim, verandah floor and steps, verandah ceiling and inside floors and trim.

INSIDE WALL FINISH—For the inside walls and ceilings, we offer you your choice of readi-cut plaster-board or lath and hard-wall plaster.

Dimensions on Floor Plans are inclusive of the Frame Work.



DESIGN OF COLONNADE
BETWEEN ROOMS
No. 1 SIZE

DOORS—We supply six cross panel doors, or special patterns if desired.

INTERIOR TRIM—Our interior trim consists of bull-nosed casing, base blocks and three-piece Colonial Mantel Head, all finest dressing stock. The trim is cut to fit, ready to be nailed in place.

MOULDED BASE—We do not cut the base to fit, but we do better—we supply corner blocks, and anyone who has seen Base "scribed" in at the corners will realize what an immense saving in time this means.

FINISHED HARDWARE—Our lock sets, hinges, window fittings, etc., are all of handsome Old Copper or other attractive finishes.

BUILDERS' HARDWARE—We supply nails of all necessary sizes in excess quantities, galvanized iron, hip, valley and step flashings, and first quality building paper.



DESIGN OF COLONNADE
BETWEEN ROOMS
No. 2 SIZE

Department of Service

A House or
A Home
A Matter of Good Taste



INCIDENT to the development of the Aladdin System of "Reading-Cutting," there is every year an increasingly large number of people who may be classed as "Amateur Home Builders;" as a matter of economy and for other reasons, they choose to regulate the design and supervise the erection of the house that is to be their home.

For each of these Home Builders there is a type of house which best suits his family and building site, an arrangement of rooms which best suits his convenience; a plumbing, heating and lighting plant, which for one reason or another will prove most desirable; a general effect of color and form on the outside of the house, enhanced by trees and shrubbery, which is most pleasing to his senses; and a choice of wall papers, window blinds, and draperies, which best make for a cheery "hominess" of the interior. That the majority of these builders are people of discriminating taste is amply evidenced by the fact that they demand a Home which has been fully adapted to their needs, but it is quite probable that many of them know little of the technique of the building Arts, that, while able to appreciate an artistic effect,

they find it difficult to say just what features go to produce it.

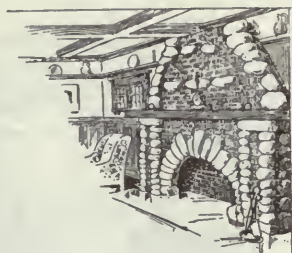
Every cosy
attractive
home expresses
the thoughtfulness
the industry and
good taste of
some woman

It is for these people that our SERVICE DEPARTMENT is maintained. We are vitally interested in making each one of our houses a perpetual source of satisfaction to the owner, an artistic landmark in the community, and a credit to the Aladdin System.

The Service Department is at all times at your service with advice and suggestion; it is no less to our advantage than to yours that your home should present an attractive appearance.



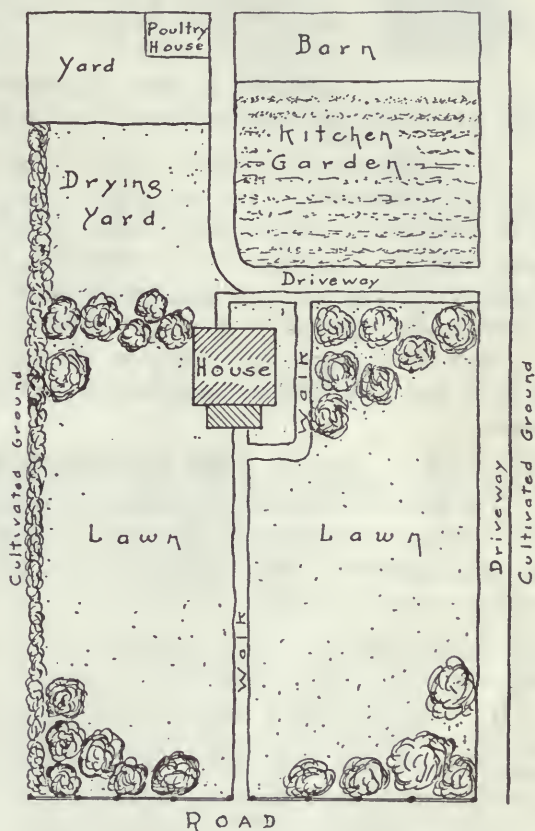
DEPARTMENT OF SERVICE—*Continued*



We are from time to time putting in print or type form descriptive outlines of various features important in the scheme of the Home. A list is given below of the subjects so far treated, and we will gladly let you have them if you judge that they are likely to be of use to you.

HINTS TO HOME BUILDERS

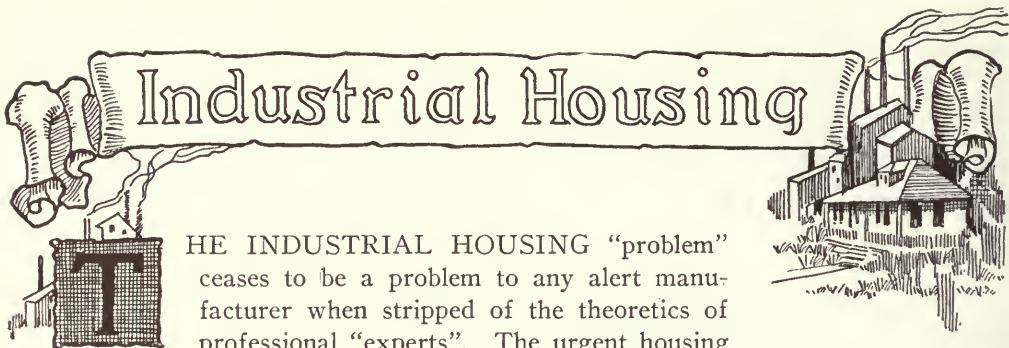
- On Selecting the Site.
- On Planning the Home.
- On Heating.
- On Sewage Disposal.
- On Wall Papers.
- On Window Shades.
- On Window Draperies.
- On Artificial Lighting.
- On Color in the Home.
- On Floor Coverings.
- On Water Supply.



In the accompanying sketch, we show a proposed plan for the laying out of a building site. Suggestions of this nature are constantly being furnished by our Landscape Gardening Department for Aladdin Home builders.

Another point of interest to us is the color scheme selected for painting the house. If you have a general idea of the colors that you would like to adopt for the exterior painting, we suggest you submit it and let our Service Department work out the details.





THE INDUSTRIAL HOUSING "problem" ceases to be a problem to any alert manufacturer when stripped of the theoretics of professional "experts". The urgent housing necessities of many manufacturers have been studied to death by these self-styled "professors."

The application of straight business judgment in the purchase of that part of the plant which we will call the *workman's housing department*, will solve the "problem" in the same way as the addition of a new generator to the power plant. The purchasing agent calls in a manufacturer of generators—not a professor of electroletic something-or-other. The generator manufacturer applies his experience to the necessity, makes a price under a guarantee of results, and the transaction is consummated.

And there should be nothing mysterious, theoretical or psychological about the planning and completion of a modern, sanitary and attractive community of workmen's homes.

THE ALADDIN PRODUCT.

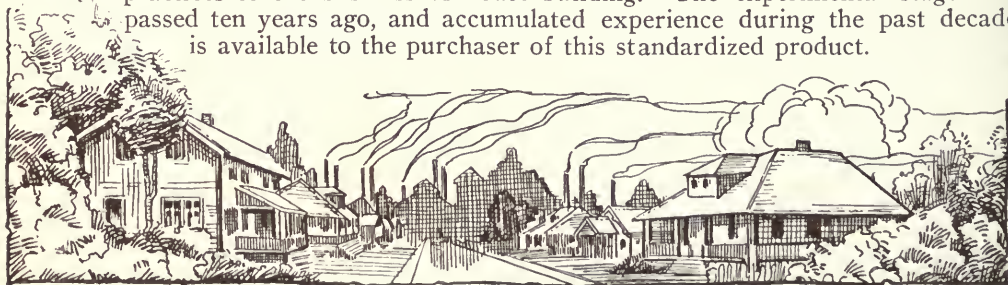
The Canadian Aladdin Company was established on the fundamental principle that the construction of dwelling houses was susceptible to the same standardized manufacturing methods as steel building fabrication, automobile production or any other modern industrial activity.

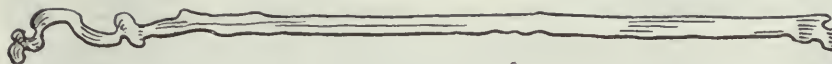
The carpenter-cut-to-fit-methods of building houses were on a par with the blacksmith-shop-built automobile.

To substitute factory machine production for hit-and-miss hand labor, the Canadian Aladdin Company originated, perfected and established the Aladdin "Readi-Cut" System of Construction. This system resulted in securing volume, with consequent specialization of men and machinery in the several parts of the product, the elimination of waste of raw materials, the development of shorter, newer and better ways of construction, the more rapid accomplishment of the completed project and the centralization of responsibility for its success.

At the beginning there was much resistance to the thought that it was possible to substitute machine labor for hand labor in house building. The passing years have completely eradicated this opinion.

The Canadian Aladdin Company has applied the best manufacturing practices to the business of house building. The experimental stage was passed ten years ago, and accumulated experience during the past decade is available to the purchaser of this standardized product.





WHY OTHER CORPORATIONS BUY ALADDIN HOUSES

Many of the keenest corporation purchasing agents in the country have sifted the house building question to the very bottom and determined that Aladdin Service met the necessary requirements of:

First: **QUALITY**, which in house building includes proper architectural and structural design and highest grade materials.

Second: **LOW COST** as matched against the ordinary type of local contractor-built houses.

Third: **SPEED** in delivery of material and fast completion of project.

You are Guaranteed the Pick of the Labor Market

If your employees are comfortably housed.
Aladdin houses have proved it to the following, among other,
discriminating buyers and large employers:

The Hydro-Electric Power Com. }
Imperial Oil Limited }
Imperial Bank of Canada } **Toronto**
Bank of Nova Scotia }

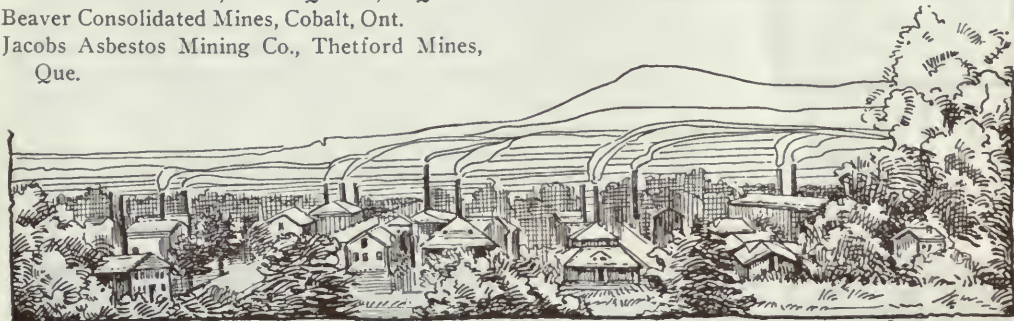
Spanish River Pulp & Paper Co., Espanola, Ont.
Shawinigan Water & Power Co. }
American Electro Products Co. } **Montreal**

Canada Carbide Co. }
Canadian Aloxite Co. } **Shawinigan**
Belgo Canadian Pulp & Paper Co. } **Falls, Que.**

Price Brothers & Co., Ltd. Quebec, P.Q.
Beaver Consolidated Mines, Cobalt, Ont.
Jacobs Asbestos Mining Co., Thetford Mines,
Que.

British American Elevator Co., North Battleford,
Sask.

St. Maurice Lumber Co., Three Rivers, Que.
Garner Bros. Grain Co., Weyburn, Sask.
The Western Salt Company, Courtright, Ont.
Northern Canada Power Co., Timmins, Ont.
Hollinger Gold Mines Limited, Timmins, Ont.
Porcupine Crown Mines, Limited, Timmins, Ont.
Northern Ontario Light & Power Co., Cobalt, Ont.
Canadian Copper Co., Copper Cliff, Ont.
Croesus Gold Mines, Limited, Matheson, Ont.
Crown Reserve Mining Co., Cobalt, Ont.
Deloro Smelting & Refining Co., Deloro, Ont.





THE DORVAL

If interested in this design, ask for alternative plan 168.

THERE are many features which contribute to the charm of this roomy little Town House and give it, even in the picture, the appearance of being vividly alive.

The spacious sunny verandah offers an open-handed welcome to the arriving guest, and the many delightfully odd windows guarantee that the "living sunlight" like the guest is welcomed within.

The proportions of the house are balanced to perfection and it is to this balance that the house owes its appearance of clean-cut poise. The little garden and the flowering shrubs can be added to suit personal taste in these matters, but like the frame of a picture, they are essential if the highest effect is to be obtained.

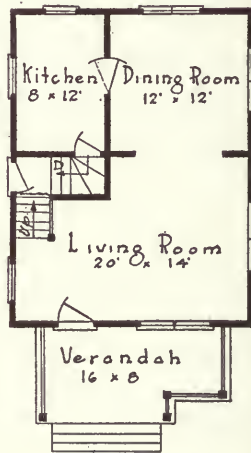
Have you ever paused to notice how in some houses every feature of the layout is in correct relation and proportion? The Living Room is

just the right size; the Dining Room and Kitchen are just in the proper degree smaller and are ideally located for convenience; the Bedrooms are all good with one a little better for the master of the house; all the extras like Closets, Hallway, and stairs have been taken care of in a minimum of space yet without crowding; the windows of the exterior are uniformly and symmetrically distributed instead of being bunched in one spot at the expense of a broad stretch of wall that is barren of openings.

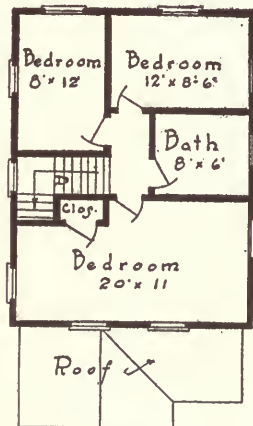
There are a lot of houses of which this is true, and more of which it is not. There are two distinct types of houses which differ immensely in the degree to which the Floor Plan fits the Elevation, and their difference is fundamental in that it lies in the designing procedure followed. The right way to design a house is to draw the Floor Plan and make the Elevation suit it. The wrong way is to sketch a handsome Elevation and pack the Floor Plan into it.

The Dorval is a shining example of the perfection of proportion which is necessarily achieved when methods of design are natural and true.

See terms on page 5 and specifications on pages 11 to 13.



FIRST FLOOR PLAN

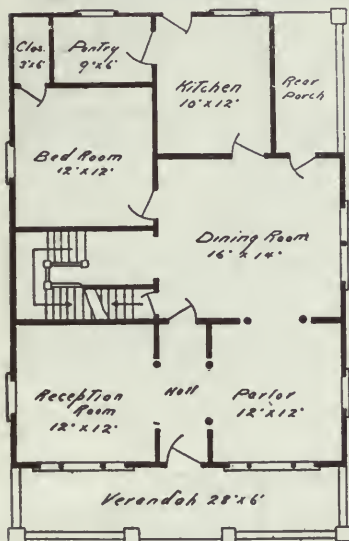


SECOND FLOOR PLAN





THE ALBANY



FIRST FLOOR PLAN



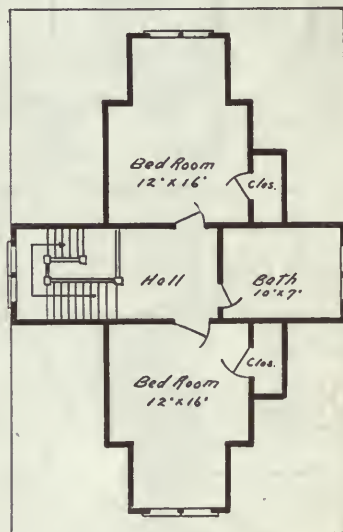
SPLENDID example of the storey-and-a-half semi-bungalow, conforming faithfully to the true bungalow type. A charming winter home of great capacity and convenience, or an equally desirable summer home for the farm, the lake or the river. Its belled dormer heavy over-hang, its square columns spindle rail, make an harmonious and main roofs with their large verandah with picture pleasing to the art lover no less than the home lover. It has, too, an especially good floor plan, one that will appeal to any housewife. A central hallway separating reception room and parlor give access to the front door from the rear part of the house without having to pass through either. All rooms large and splendidly lighted. Ample pantry, bathroom and closets leave nothing to

be desired. It passes for a \$7,000.00 home in any restricted district, and is worth it too.

When furnished as a Summer Cottage, as described in the summer cottage section hereof.

"Readi-Cut" homes are a satisfaction to their owners and a credit to us. The "Readi-Cut" System will appeal to the man who wants his home quickly. "Readi-Cut" homes are beautifully different and warmly attractive, inside and outside.

See terms on page 5 and specifications on pages 11 to 13.

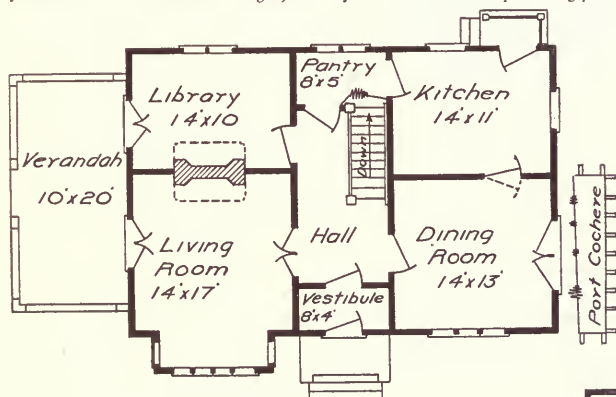


SECOND FLOOR PLAN



THE LOCKWOOD X.

If interested in this design, ask for alternative plan 154.



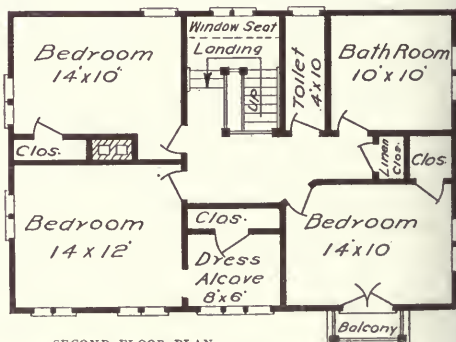
FIRST FLOOR PLAN

pass by another pair of French doors to the verandah, with its three exposures.

Hammocks, porch chairs and grass rugs will make this the most coveted spot in the house on pleasant days and evenings in the summer.

The dining room well lighted by the front windows and the French doors opening to the port cochere and a large kitchen of adequate size for the needs of such a home, lead you to expect something more than ordinary in the second floor plan, and you will not be disappointed.

Three good bedrooms with closets of ample size, lit by mullioned windows and French doors opening on to the balcony, will welcome you when you are seeking quiet and rest. A large bathroom and separate toilet and those idols of a woman's heart, closets, and then more closets.



SECOND FLOOR PLAN

AN exclusive design that will not be sold to more than one customer in any community, without the previous consent of the first owner. If you want something a little nicer and better looking than anything in your vicinity, the "Lockwood" will score an instant hit.

Generous grounds and site well back from the road with an environment of trees are essential to having this design in proper perspective, and the "Lockwood" will be a show-place in any city or country of beautiful homes. If you are fortunate enough to be its owner your latch key will give you access to a large vestibule opening into an 8-foot hall. From the hall rises the main stair in two flights with a landing midway. As you enter the hall, are French doors on the left opening into the living room, 14 ft. x 17 ft., with big mullioned bay window in the front and fireplace in the rear. From this room you may



THE VILLA VI.

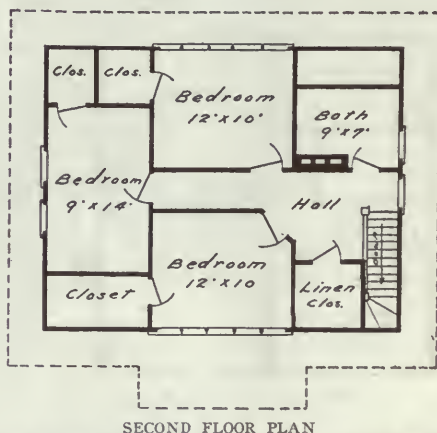
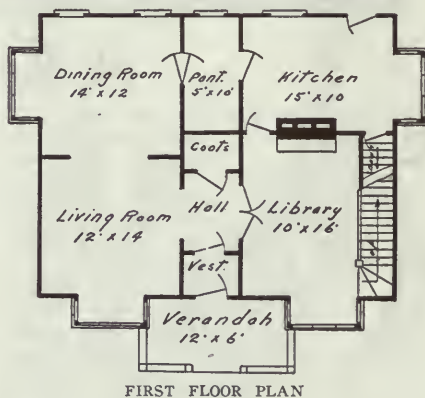
If interested in this design, ask for alternative plan 106.

YOU are bringing a relative or friend to your home for the first time, or perhaps it is a business acquaintance who has accepted your invitation to dinner; you are walking up your street, passing one nice house after another; in your companion's mind is running the unspoken query—"Is this the house, or is it perhaps that next one?" Presently you give the sign and turn up the neat concrete walk to your home—the Villa. Do you not think that as owner you would feel justly proud? No matter how pretentious the neighbours, the Villa loses nothing by comparison. It is too obviously a home of "choice" and not of "necessity." It has distinction in every line—it has individuality—it is one of those houses that immediately impress you with the idea that the owner must be a person worth knowing.

On entering, first impressions are enhanced rather than discounted; there are the rooms of necessity—kitchen, pantry and dining room, a living room or room of formality and a library, sacred to the family and intimate friends. As the second floor of a house is customarily private to the household, it is eminently proper that the stairway should rise from the library. The three second floor bedrooms are roomy and well lighted, the ones at the front and rear having glass full across one wall; the bath is most conveniently located for access from first floor and bedrooms.

A veritable gem.

See terms on page 5 and specifications on pages 11 to 13.





THE MASSACHUSETTS

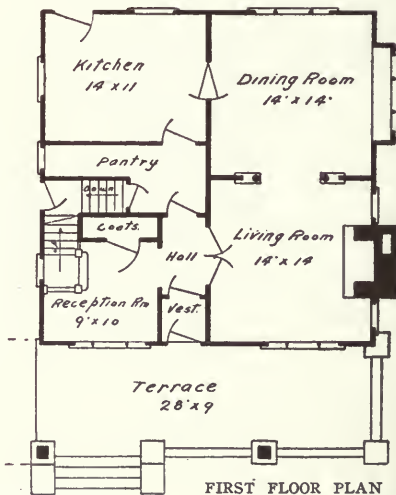
CAN you picture to your mind a more beautiful home than the one shown here? Cobble stone piers for the verandah and terrace with outside chimney to match, are recommended as giving just the finishing touch that this house deserves. If such are not available, or men skilled in laying them cannot be obtained, a handsome selected brick can be used instead with almost equal effect.

The nine-foot verandah with its port cochere (a highly appreciated convenience in these days of automobiles) for many months in the year will be one of the most enjoyable comforts of this home and for the entire year one of its most attractive features. The port cochere can be omitted if desired, or if the width of the building site forbids its use. The splendid overhang of

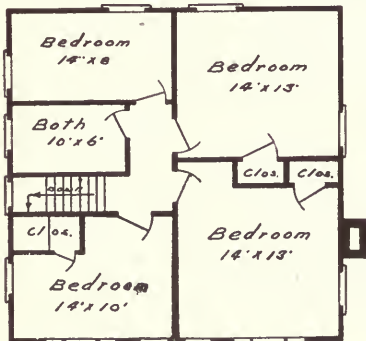
the roof with its exposed rafters carried front and rear on heavy brackets sum up the distinguishing external features of this design.

Examining the floor plan, you cannot but admire the noble proportion of the three ground floor rooms; the grade entrance at the side; the roomy pantry, coat closet and vestibule and handsome winding stair to the second floor. Three large sleeping rooms with closets, maid's room and bath, each well lighted and readily accessible from the central hall, complete this most charming home.

See terms on page 5 and specifications on pages 11 to 13.



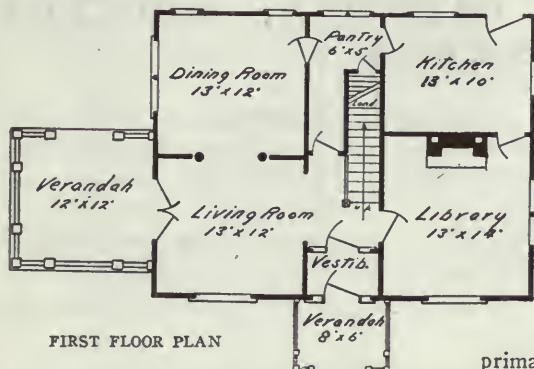
FIRST FLOOR PLAN



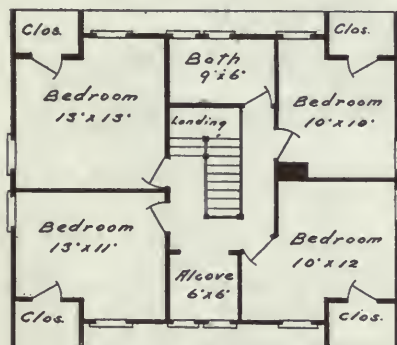
SECOND FLOOR PLAN



THE CROFT VI.



FIRST FLOOR PLAN



SECOND FLOOR PLAN

IT is the ambition of most normal, healthy men to own sometime "a little country place"; a two to ten-acre lot in the not too distant suburbs; a lot with a nice outlook, some fine old trees, a lawn, a flower and vegetable garden and perhaps a bit of an orchard. Somewhere in the rear will be a combination tool house and garage, and a poultry house to take care of a dozen or so hens—and centrally, in the most eligible situation, the house will be built, a proper country home, roomy and bright, and with such characteristics of line, finish and coloring as to blend with its garden setting. Just such a home is the Croft. It will add the final touch of class to the handsomest estate, or built as a

primary step, it will set a standard of excellence which cannot help but stimulate the landscape work which is to follow. The floor plan is one of the best that we illustrate; eight good rooms and all such extras as bath, closets, pantry, vestibule and verandahs. The truly fine touch in the layout lies in the double entrance to the house. The formal front entrance opening from vestibule towards the street, and the private entrance giving from living-room into spacious verandah and from there to the private grounds.

Don't forget if you are handy with tools or have a handy man at your service, you can erect "Aladdin" houses with perfect ease and without danger of mistakes.

The quality, appearance and convenience of "Aladdin" homes is the source of deep and lasting satisfaction to all owners of them.

See terms on page 5 and specifications on pages 11 to 13.



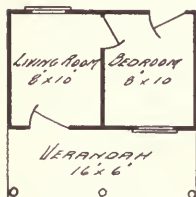


ALLISTON - DEVON - GLENORA - REDCLIFF TOTTENHAM

THE cottage illustrated above is typical of the cozy and neat designs described on this and the following pages, in the sizes and with the floor plans set opposite their respective names. Naturally the windows will agree with those shown on the floor plans rather than with those shown in the typical illustration above.

The sizes and floor plans here offered are the most generally popular, but within reasonable limits we can furnish any of them with modified floor plan and enlarged to suit the purchaser.

The same excellent quality of material and workmanship is found in these small, inexpensive homes as in our most expensive designs.



ALLISTON, Size 16 x 10

ALLISTON No. 1, Size 20 x 10

ALLISTON No. 2, Size 20 x 12

Each has two rooms of equal size and the porch railing is omitted.

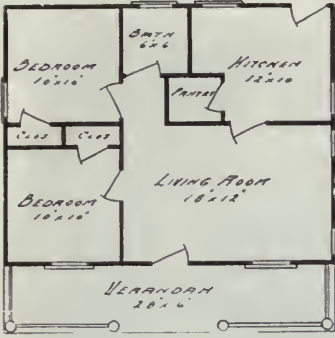
ALLISTON FLOOR PLAN

"Readi-Cut" houses are made up to a standard—not down to a price.

*Which one of the designs in our Catalogue do you consider the most attractive? Write and tell us.
We value your opinion.*

See terms on page 5 and specifications on pages 11 to 13.





DEVON FLOOR PLAN

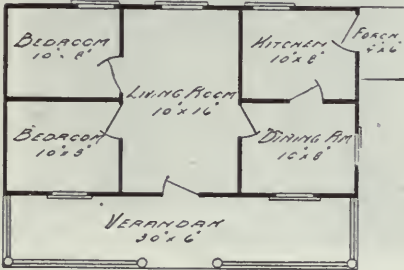
DEVON

Furnished with six-inch porch columns and railing, as shown in the illustration opposite.

Industrial and mining companies find this one of the best cottages they can buy for their married employees' homes.

GLENORA, Size 30 x 16 GLENORA No. 1, Size 30 x 22

Also furnished with six-inch porch columns and railing. Another favorite design for housing employees, gardeners and small farmers.

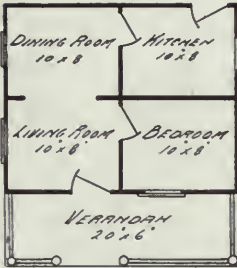


GLENORA FLOOR PLAN

REDCLIFF, Size 20 x 16 REDCLIFF No. 1, Size 24 x 20

A neat four-roomed cottage for about what the rough lumber would cost you locally without hardware, plaster, paint or glass, and without the lumber cut and finished.

Columns and railing as shown in the cut opposite.



REDCLIFFE FLOOR PLAN

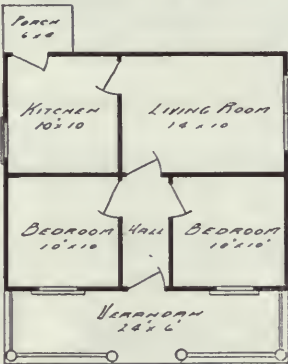
TOTTENHAM

Columns and railing as shown on the opposite page. This is greatly in favor with those objecting to the front door opening into the living room.

The largest of the foregoing designs can be erected by two men handy with tools in six days; the smaller ones, in less.

ONTARIO.—Your System saved me about \$300 on my "Redcliff."—CHAS. WITHINGTON.

See terms on page 5 and specifications on pages 11 to 13.



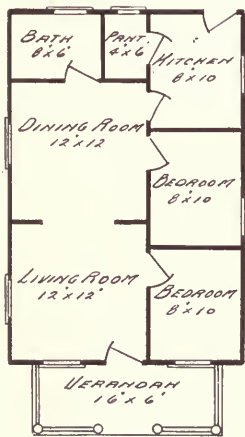
TOTTENHAM FLOOR PLAN





THE JACKSON

If interested in this design, ask for alternative plan 115.



JACKSON FLOOR PLAN

THIS design is furnished in two sizes—20' x 30', and 22' x 30'. The illustration is typical of the four designs — clean, straight lines. They are generally intended for use where land values are relatively high, and it is necessary to make full use of it by building on narrow lots.

Their quality is our only quality—the best. They are furnished with 6" porch columns and railing. The floor plan shown is of the 20' x 30' size. In the larger size the size of the rooms is each increased proportionately, or the added space may be distributed in any way you prefer. In fact, we can supply this Aladdin home with any arrangement of floor space you desire if the one shown is not entirely to your liking. The dimensions given for length of building are exclusive of the 6' verandah.

A very warm, substantial, comfortable home of excellent appearance and moderate cost.

The storm door appearing in the illustration is not included in the price quoted, but storm doors and storm sash will be furnished for these or any other of our houses at closest prices.

The "Readi-Cut" idea has helped many a family to get that longed-for "home of their own."

ONTARIO.—Your System saved me on the "Midland," \$700.00.—N. WELLWOOD.

The wholesaler adds to the price, the dealer adds to the price, but neither adds to the Value of the lumber. This gave birth to mail selling—direct from the producer to the consumer.

See terms on page 5 and specifications on pages 11 to 13.



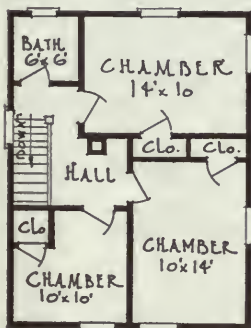


THE PRESTON IX.

If interested in this design, ask for alternative plan 169.



FIRST FLOOR PLAN



SECOND FLOOR PLAN

WHERE the value of the land on which you propose to place your home is a secondary consideration, you might prefer a house with a central hall and large rooms on either side, or even a bungalow with all the living space on the ground floor; but where your lot is not a large one and you must have three bedrooms, and the usual accommodations, or where you are figuring on the day you may wish to sell or rent and locate elsewhere, you could hardly find a better design, for it has large, well-lighted living and dining rooms; compact, convenient kitchen and pantry; free passage from kitchen to front door by way of hall and vestibule without passing through either dining or living room; one small and two extra large bedrooms with closets, bathroom and hallways, and it can all be easily placed on a twenty-five foot lot.

The astonishing part of it is that it is not of the chalk-box architecture; the proportions are excellent and the decorative features redeem it from commonplaceness.

A small investment in land on which to place it will always make it a good seller or it can be readily rented on a very profitable basis; and the wise builder looks to the possibilities of the future.

I have a very pretty home and am very happy in it.—CATHERINE CHIDISTER.

See terms on page 5 and specifications on pages 11 to 13.



THE DALE

ANOTHER bungalow to meet the growing call for houses of this type. As to the lines of outward appearance, it is quite impossible to add a word to what the illustration tells.

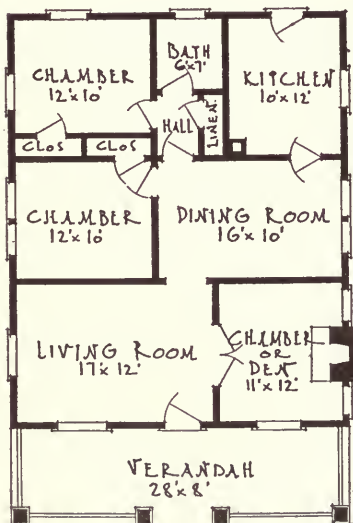
The floor plan is a little different from anything we have ever offered. The front chamber or den adjoining the living room, equipped with a fireplace, will be a greatly appreciated comfort where two chambers are all that are required. The double doors connecting living room and den give privacy to the den when desired or permit of the two rooms being thrown together when occasion requires.

If the den is wanted exclusively for a chamber, we would suggest transposing the living room and den so that the fireplace will be in the living room, a trimmed opening to lead into the dining room, which would then make the living room and dining room very much like one large room, divided by portieres. In such a case, instead of double doors between living room and chamber, we would furnish a single door leading to the chamber. These changes would not make any difference in the cost of the design.

The inside hall and linen closet are especially desirable features.

Divided light upper sash for the windows furnished in place of single lights if desired.

See terms on page 5 and specifications on pages 11 to 13.



FLOOR PLAN





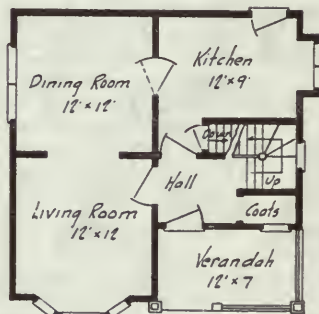
THE STRATFORD X.

THERE is in most communities a strong tendency on the part of local architecture to get into a rut, until presently there are just as many types of houses as there are different contractors. Many people come to us less from a desire to save money than from a determination to combat this, to have their house express their own individuality rather than that of the contractor, possibly years dead, who originated the local style. As a Town House that is Different we offer you the "Stratford." It has the full two-storey, four-square space efficiency without the customary band-box appearance. To this end were designed the many contrasting windows, the inset verandah with its unusual projecting pediment, the belting cornice which effectively breaks the long ascending lines and separates the shingled from the sided portion of the wall. The "Stratford" is dignified and distinctive. Its design is odd and attracts the eye without in any degree suggesting the freakish. The floor plan is above reproach.

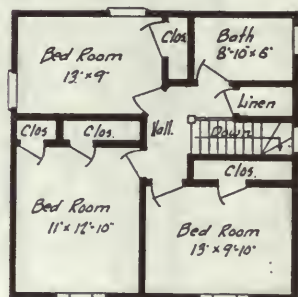
Quality or quantity are never sacrificed, no matter what the competition.

SASKATCHEWAN.—*I have lived in the "Denver No. 1" all winter and find it extremely satisfactory. It has stood up against a very severe winter. We have at no time suffered any inconvenience from the cold.*—T. R. A.

See terms on page 5 and specifications on pages 11 to 13.



FIRST FLOOR PLAN



SECOND FLOOR PLAN





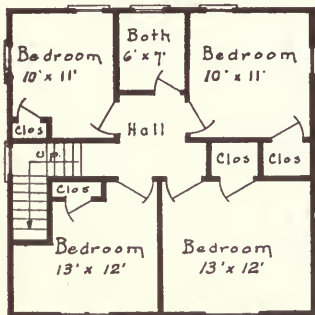
THE EDMONTON

If interested in this design, ask for alternative plan 137.

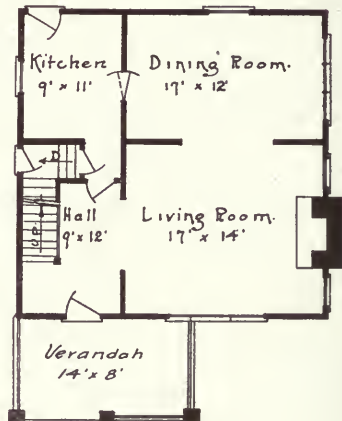
WE want a square house—half shingled—and with a cottage roof. We want a Living Room, a Dining Room and a Kitchen on the First Floor, and FOUR Bedrooms and Bath on the Second Floor.”

An astonishing number of people outline their requirements of a Home in just these terms; you will note that we have emphasized the “four” Bedrooms, as this is always an essential point. It is to meet this recognized need that we have catalogued the design Edmonton.

The Edmonton is something more than a house with a given capacity. In supplying seats for four guests in your drawing room, four kitchen chairs would probably serve all purposes of utility, but would hardly be in keeping with the other tasteful furnishings. So, in the Edmonton, we have striven to satisfy other needs besides those of utility; it is an entirely charming home which will concede nothing of beauty or good taste in the most select of company; it is a house of pretension for a street of residences, or will serve with an equal fitness as a Farm Home.



SECOND FLOOR PLAN



FIRST FLOOR PLAN

Among the Ranchers of the Western Provinces the specifications of Floor Plan commonly vary as to the first floor layout, where a large combination Kitchen and Dining Room is generally wanted with a Living Room, a First Floor Bedroom and a Hall.

To meet the needs of the Western Farmer we offer the following alternative to the Floor Plan shown: Without change in price we will move the partition between the Kitchen and the Dining Room seven feet to the right, making the Kitchen 16' x 11', and the Dining Room into a First Floor Bedroom 10' x 12'. The Living Room and Hall, and the Second Floor Plan would remain as before.

See terms on page 5 and specifications on pages 11 to 13.



THE GRANGE

THIS design offers a happy solution of the problem of the man who wants a bungalow, but needs the room of a two-storey house, and is a design admired by everyone.

Its strong features are its beautiful sweeping lines, deep and wide verandah under the main roof, with its battlement railing and square columns, the shingled gable ends and dormer with its balcony, the exposed rafters and brackets, carrying the overhang of the roof, and the bay window.

The interior arrangement makes it a very desirable town or farm home.

The three essential ground floor rooms, living-room, dining-room and kitchen, are all large and well lighted, and the pantry is of ample size for all the purposes of a farm home. The front door is accessible from any room in the house without passing through any other room.

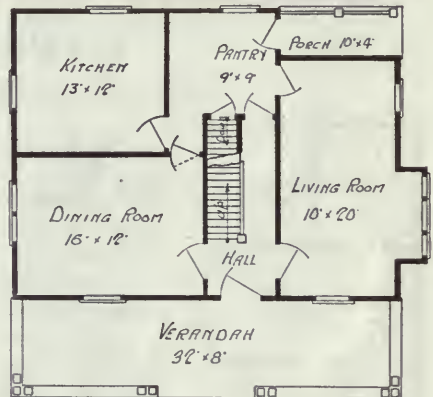
Four large bedrooms and bathroom, each with its own closet, and the balcony from the front bedroom, make an especially good second floor plan of large capacity. If a den or farm office is required, it can very easily be supplied by partitioning off the rear of the very large living-room.

If single light sash are preferred to the divided light sash for the upper half of windows, they can be furnished that way.

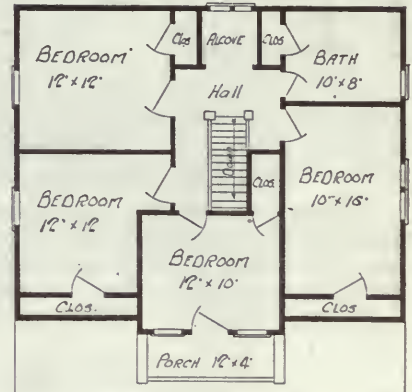
We furnish plans and directions free with every "Aladdin" house purchased. These are not for sale, and are furnished only when a complete house is purchased.

ALBERTA.—The "Dagmar" stands the severe weather first rate. W. R. GARDINER.

See terms on page 5 and specifications on pages 11 to 13.



FIRST FLOOR PLAN



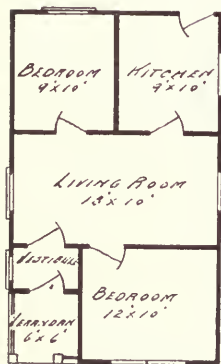
SECOND FLOOR PLAN





THE BURNSIDE

If interested in this design, ask for alternative plan 165.



FLOOR PLAN

A COMPACT, cosy, comfortable, convenient, warm home of more than usually attractive appearance, modern in design and arrangement," exactly describes this remarkable house. The cut falls short of doing it justice, as the combination of a cloudy day and walls stained dark walnut was too much for our photographer.

The compact arrangement — all the rooms opening off a central living room—will appeal to the housewife who does her own work, besides simplifying the heating arrangements; a good stove in the living room will maintain a temperature of 70 degrees throughout the house, provided that the bedroom doors are left partly open; this is a demonstrated fact and speaks wonders for our cold resisting construction.

We have labelled the front room a bedroom, but would suggest that the bed be one of the many attractive folding types, so that the room may be used as a parlor or sitting room throughout the day.

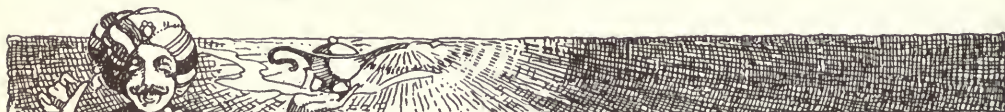
It has always seemed to us that this house is peculiarly adapted to be a home for a couple getting on in years, old people who have to economize their steps, and like everything to be more or less within hearing, sight and reach.

WATERFORD, ONT.

As regards design "Burnside," I am pleased to say that I am more than satisfied with it; seventeen days in putting it together, plaster and all; was simple to build, as Plans made everything easy. It certainly would surprise you the room inside it after looking at it from the outside; everyone says the same thing. It certainly is cosy with the furnace, warm as a mansion and not so hard to keep warm. Cost \$128 to construct; saved about \$125 in cash and a whole lot of time.

GORDON K. WOODLEY.

See terms on page 5 and specifications on pages 11 to 13.





THE MODEL X.

THE Model, as pictured above, was designed by the Architect of the Department of Agriculture to give the maximum amount of farm house, in appearance and utility, for a minimum amount of money.

He did exceedingly well, and such error as he fell into might have been avoided, we think, if he had shown the plan to his wife. He probably has not had brought home to him the fact that "here in America" the man of the house may have something to say as to the exterior appearance of the home, but it is the housewife who lays out the floor plan.

As far as we have observed, the housewives who have studied this plan are a unit in considering that the outside kitchen door and the rear kitchen window should be interchanged.

The exact amount of space required in a house varies, of course, with the needs of the family, and the homesteader, who is "batching it," would probably see no disadvantage in a kitchen door that opened on the front verandah, so that the three possibilities outlined above might each serve in a particular case. We are prepared in the Model, as in all our houses, to make alterations to suit the purchaser, there being no extra charge except for added material involved.

In the Model, differences of opinion go no further than the floor plan. As to the appearance of the house, with its graceful lines and many attractive windows, there can, we believe, be only one opinion.

Our Service Department is a clearing house for building ideas. We are constantly receiving and passing them on to our customers.

See terms on page 5 and specifications on pages 11 to 13.



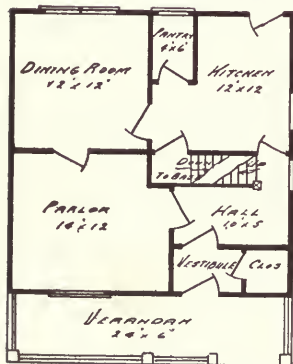
FLOOR PLAN



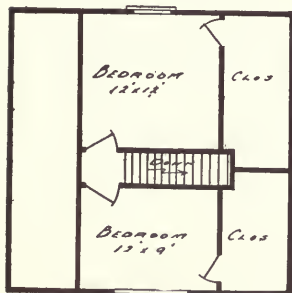


THE OXFORD

If interested in this design, ask for alternative plan 173.



FIRST FLOOR PLAN



SECOND FLOOR PLAN

A GENTLEMAN who built one of our Oxford houses has called our attention to an odd fact. He says that nearly every one whom he has taken through his home has expressed surprise at the number of splendid large rooms he has. This has caused us to wonder if the appearance of our photograph really was deceptive. The second floor bedrooms have hipped ceilings, but as the side walls are six feet high, this is in no way a source of inconvenience. The first floor plan is rather astonishing when you consider that the designer has only twenty-four feet square to work on. A large parlor and dining room, a vestibule, a coat closet and a roomy hall with handsome open stairway, a kitchen with pantry and interior basement stair—is there anything missing that might be found in the most pretentious home? Note the door, kitchen to hall, which allows the front door to be answered without passing through dining room or parlor.

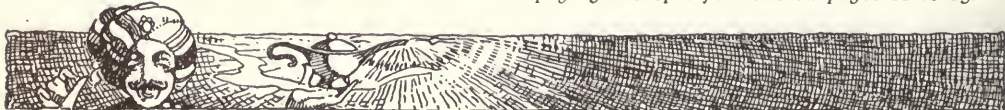
We would suggest as a possible variation in the design, that the mullioned window of the dining room be removed to the side wall. For those who are interested in this design for a farm house, we have among our blue prints an alternative floor plan (No. 107) with first floor bedroom and a large combination dining room and kitchen. This plan we will be glad to submit upon request.

ONTARIO.—With a kitchen range and a base burner, the "Oxford" is almost too warm in the ordinary weather.

LIONEL BRAYLEY.

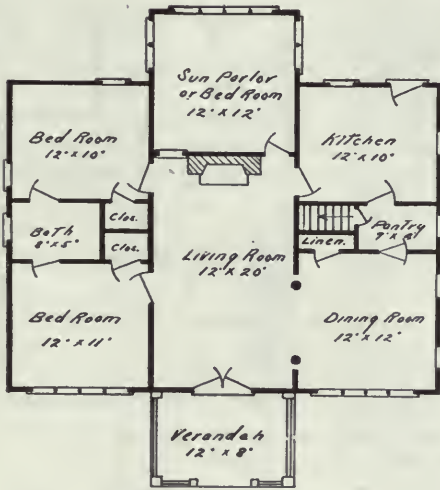
If you decide now, one month from to-day you can be living in the Oxford.

See terms on page 5 and specifications on pages 11 to 13.





THE ELKO X.



FLOOR PLAN

LIKE some people, this bungalow does not take a good picture. But unlike some people, its beauty is *not* skin deep. Over-shadowed by an apartment building or set on the crest of a bald hill, it would still be the same bungalow, but its beauty would not appeal to you till you were inside it; but properly placed on a hillside or even on level ground, with a few good shade trees for background, and low shrubs and flowers for foreground, it is hard to say which is the more beautiful, the exterior or the interior. One thing is certain: If size and capacity fit your lot and your needs, you will find it a little "palace for a King." Large rooms all, closets galore, generous bathroom and pantry, space for a grand fireplace at the rear of living room, and all designed with a view to comfort and artistic furnishing—what more could one ask? If you see anything wrong about it, tell us about it and we will fix it, if it adds to the comfort, convenience or appearance. The sun parlor extension at the rear is roofed over the same as the front verandah.

ONTARIO.—The design of the "Lakeside" is pleasing, the material good, the workmanship all that one could ask; the saving in money has been considerable, and also the saving of time and trouble has been great.

A. A. MACDONALD.

See terms on page 5 and specifications on pages 11 to 13.





THE TAWANDA (Brick Veneer) THE TAWANDA (All Frame)

If interested in this design, ask for alternative plans 110-111.



THIS half-shingled brick veneer home, with wide box cornice, had its inception in the mind of a young man enamoured of "Aladdin" houses by his experience in erecting one for his father. For city, village or country, can you think of a more simple tasteful home in which to start life, in which to end life, or in which to spend the interval between? There are certainly no canons of good taste violated in this home, all rooms regular in shape, well lighted and easily furnished and decorated — an appealing arrangement. Porch and pantry, the latter connecting kitchen and dining room, will especially interest a student of household efficiency.

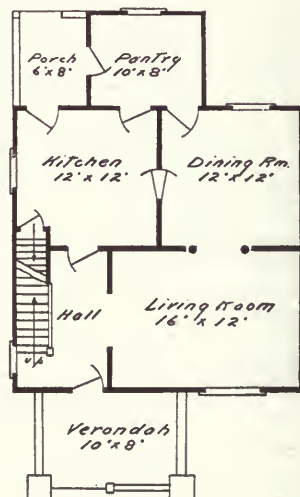
All three bedrooms are large and supplied with enough closets, and the covered balcony as an airing place during the day, and a lounging place during the evening, will be well prized by all members of the family.

Fitted with glazed sash, this balcony at once becomes an ideal sleeping porch.

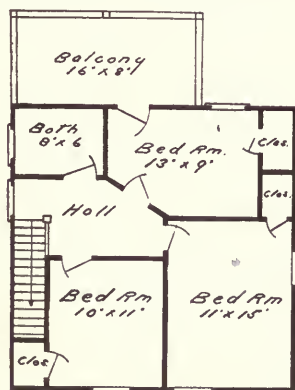
All ceilings throughout the house are 8 ft. 6 in. Matched sheathing is provided for the outer walls in the design as illustrated for brick veneer.

Why not take a short vacation when your house arrives and put it up yourself?

See terms on page 5 and specifications on pages 11 to 13.



FIRST FLOOR PLAN..



SECOND FLOOR PLAN





THE LYNN

AN unusually attractive exterior and a sense of roominess are features that make the "Lyn" one of our most popular bungalows. The low sloping roof and the wide eaves and shingled porch and step rails in combination with the siding of the walls, permit a great latitude in the decorative scheme, and with the use of harmonious painting and staining, these features can be developed in a most pleasing manner.

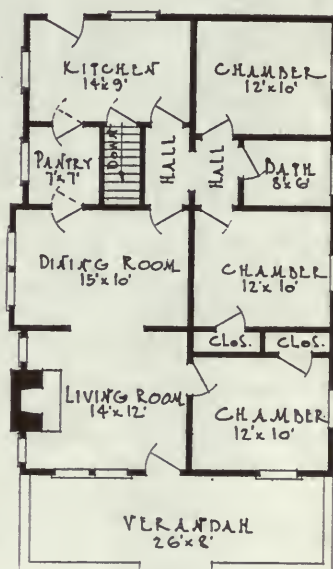
The expansive porch, which extends across the entire front, is well shaded by the broad overhanging roof.

The convenient and inviting arrangement of the several rooms are outlined in the floor plan. Your attention is called to the square and good dimensions of all the rooms, especially the living room, with its attractive mullioned windows and arch leading to the dining room. Divided square lights are furnished for the double sash of all windows if preferred.

The kitchen is of ample size and has proven very popular among housewives. Note the butler's pantry separating kitchen and dining room.

Three good-sized bedrooms and sufficient closets complete the plan of the "Lynn," except for the inside cellar stairway.

Few moderate priced bungalows offer so many real home comforts as can be found in the "Lynn."



FLOOR PLAN

See terms on page 5 and specifications on pages 11 to 13.





THE ACTON VII.

ONE of our more modern offerings, but excellent in appearance and arrangement, and fast becoming one of the greatest favorites in a storey and a half house. It rightly may be classed among the semi-bungalows, and for the cost involved has more room available than the true bungalow. You see, the same roof that covers these six rooms and bathroom in this design would cover but three rooms in a true bungalow.

It is one of those designs that, while it can be placed on a twenty-five foot lot, has the appearance of being as wide as anyone could wish, just as if the land it were on were of no concern.

The dark body paint of this house did not take kindly to photographing, but it cannot hide the good lines of the deep verandah with its cottage roof or the body of the house with its exposed rafters and side entrance. This latter is a great feature of any house, giving access as it does to both kitchen and cellar without having to pass through any rooms of the house to get to them.

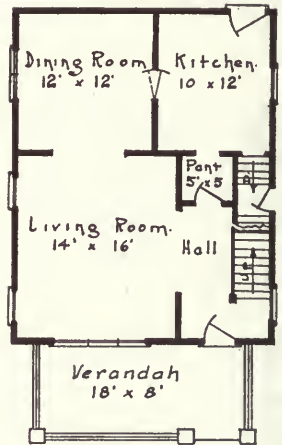
The floor plan is good and closets and bathroom and pantry very ample, and allowing for a fair-priced lot, you can in this design have your own home, erected and ready to move into at a price that puts it within reach of anyone.

WICHITA, KANSAS.

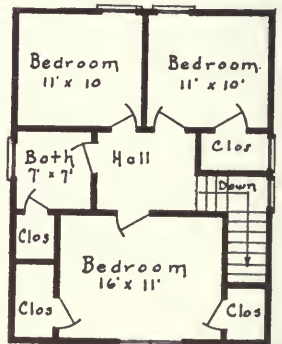
Every piece was cut to fit and we had no trouble in putting it together. I saved at least from twenty to twenty-five per cent. by doing business with your house.

I shall be glad to have you refer any of your customers to me, as I am very much pleased with my cottage and shall recommend your house to anyone of my friends contemplating building on Georgian Bay, or elsewhere in Canada.—J. O. DAVIDSON.

See terms on page 5 and specifications on pages 11 to 13.



FIRST FLOOR PLAN



SECOND FLOOR PLAN





THE WHITBY.

WHAT is there lacking about this bungalow to make it perfect of its kind? We have tried to discover and have failed. Go over the rooms one at a time and see in what, if any, respect you would have them different; then write and tell us about it. We will advise you if it is practicable to make the changes you suggest and what, if anything, it will save you or cost you to make those changes. It stands unabashed among some of the greatest of nature's beautiful works and its happy owners do not have to apologize for its being out of keeping with its surroundings.

A hundred thousand dollars spent on marble and bronze, could not furnish more protection and shelter, more warmth and comfort to the owner, per cubic foot of space than does this bungalow for a fraction the cost.



FLOOR PLAN

Canadian Aladdin Co.,
Toronto, Ont.

NEW CARLISLE, QUE., OCT. 27TH, 1917.

Dear Sirs:—

Since my last letter to you I have received my house and am highly satisfied with same.

I have undertaken the erection of it myself and am just completing the outside finish. Everything goes together wonderfully, not the least trouble.

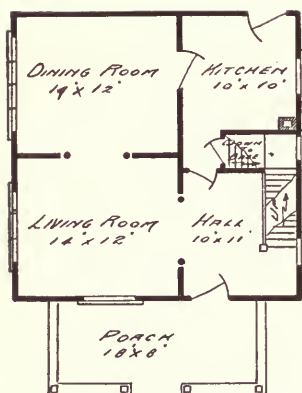
Thanking you, and again mentioning the beautiful quality of the wood, etc., of which I am extremely proud,

I remain,

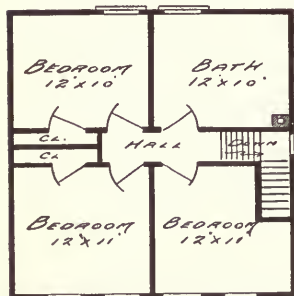
Very sincerely,

O. SHEARER, LT.

See terms on page 5 and specifications on pages 11 to 13.



FIRST FLOOR PLAN
SUBURBAN NO. 2.



SECOND FLOOR PLAN
SUBURBAN NO. 2.

THE SUBURBAN No. 1, 20 x 22

THE SUBURBAN No. 2, 24 x 24

THE SUBURBAN No. 3, 24 x 28

THE SUBURBAN No. 4, 26 x 26

Above dimensions are exclusive of an 8 ft. verandah.

A STOREY and a half house of the square type, it has all the advantages that come with such a home—easily heated, easily furnished, conveniently arranged, and no waste space. In the larger sizes, it is practical to furnish a den on the second floor or another small sleeping room and still leave plenty of space for the bathroom.

We believe that the appearance of this home is improved by giving the roof a heavier overhang, and in the absence of instructions to the contrary, we would prefer to furnish it that way.

"Aladdin" homes are specially built to meet the requirements of the Canadian climate.

MANITOBA.—The "Suburban" material was all first class and went together without a single mistake. You have a wonderful System.—W. B. RAE.

See terms on page 5 and specifications on pages 11 to 13.



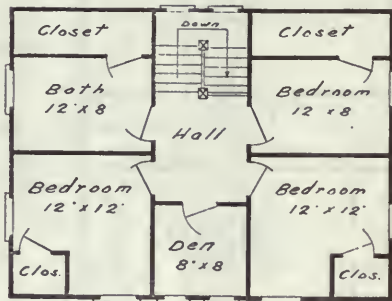
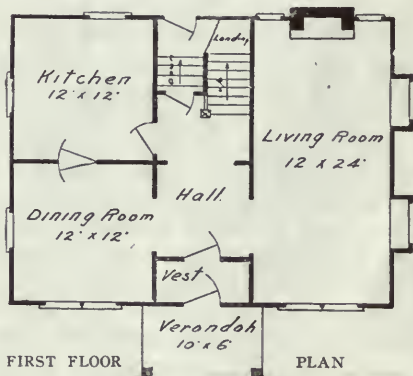


THE LANCASTER

THIS is of the Dutch Colonial type of architecture, adapted to building on a lot of generous size, well back from the street. It is much favored by those wishing "something different" from the conventional designs so common in Canada, one that can be recognized even in the dark by its distinguishing lines. The gambrel roof makes available, for living purposes, every particle of the space, wasting nothing for attic room. If desired, shingled roof will be extended over the porch in place of the pergola and single lights instead of divided lights furnished in the windows.

The conspicuously desirable features of the main floor plan are the vestibule, large hall with double flight of stairs to the second storey, and the grand living room, 12 ft. x 24 ft., with box windows at the sides and casement windows on either side of the fireplace in the rear of the room; dining room and kitchen, each 12 ft. x 12 ft., with double swing door connecting; three good bedrooms with den and large bathroom, all opening from a square hall, conserve every foot of space; closets in front and rear bedrooms, being under the slope of the roof either side of the dormers, have hipped ceilings. All other ceilings are square.

See terms on page 5 and specifications on pages 11 to 13

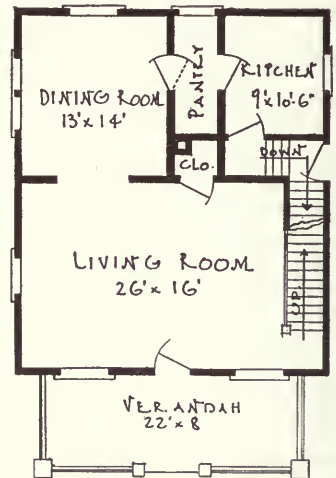




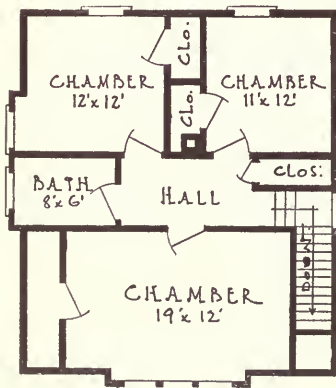
THE SOVEREIGN IX

If interested in this design, ask for alternative plan 138

NAMED after the father of the "Readi-Cut" idea. That tells you in a phrase our opinion of this design. It is right up to the minute in designing of storey-and-a-half semi-bungalows. Field, rock, cobble stone or fancy brick verandah columns, exposed scrolled timber work verandah roof and scrolled exposed roof rafters, make the exterior of this design absolutely unique and individual. Only one of these will be sold in each community without the consent of first purchaser. If you live in this house, you will not need to be told when you arrive home. You will **KNOW** it. Such details as glass for the windows, arranged to suit the purchaser.



FIRST FLOOR PLAN



SECOND FLOOR PLAN

And isn't the living room a **REAL** one for those who like and can afford elbow room? The same is true of the whole house.

Do not overlook the size of the bedrooms and closets on the second floor and the big linen closet and bathroom. Good light, good ventilation and good looks are apparent in every detail.

"Aladdin" homes are comfortable, healthful and practical in point of ventilation, light and heat.

ONTARIO.—"Aladdin" houses are the best and cheapest. They are beyond the criticism of any critic.—V. A. HITE.

See terms on page 5 and specifications on pages 11 to 13.





THE VICTORIA

If interested in this design, ask for alternative plans 109—38' x 26'. 161. 164 A & B.

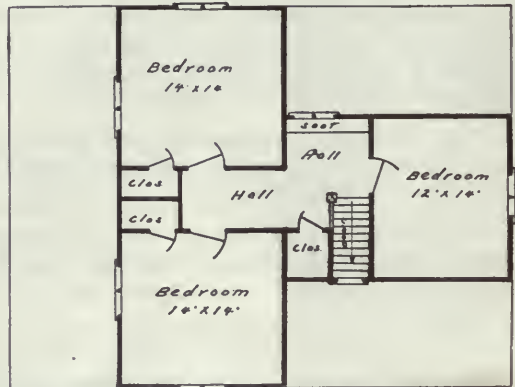
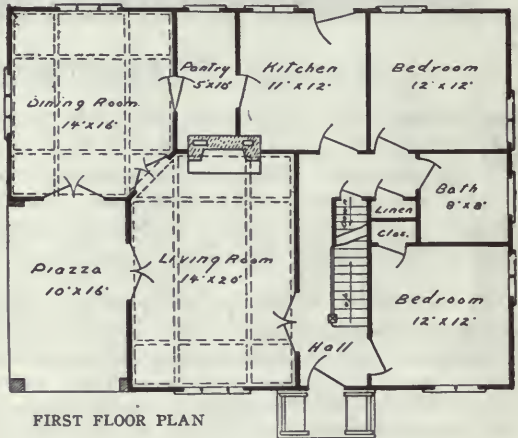
THE bungalow has come to stay. It is a type of architecture growing daily more popular with people of taste. Long in great favor on the Pacific Coast, its many charms and advantages are rapidly bringing it in demand in the East. Can be supplied equally well with siding for the outer walls. If stucco finish is specified, the piazza floor and floor of terrace at front door should be of flag stones or concrete.

The beautiful lines, the hooded entrance with its Colonial benches and door, the divided light casement windows and French doors in the dining room and side of the living room, make this one of the best types of the bungalow designer's art. Note the living room, entered through the French doors on the left of the hall. To the right is the massive fireplace at the rear of the splendid 14 ft. x 20 ft. room with its mulioned front windows and French doors leading to the piazza and dining room, and its heavily beamed ceiling.

The dining room, lighted on three sides, is bright as day. The ceiling is beamed to match the living room. A butler's pantry, kitchen, two bedrooms and bath, with closets and main and cellar stairs, divide the balance of the ground floor.

Three large well-lighted bedrooms with closets, on the second floor, complete the role of this bungalow's chief features, making it the most popular one we have ever offered.

MONTREAL, P.Q.—My house, "Victoria," is progressing well, lumber is good and the general appearance fine.—DR. GEO. W. MATHEWSON.





THE WABASH

THE marvellous beauty and indestructibility of cedar shingles has given great vogue to the use of shingles for the walls. Siding freshly painted of necessity has a high finish that conveys the impression of newness. The shingles properly stained give a much softer, mellower effect, and are increasingly in demand for a wall finish.

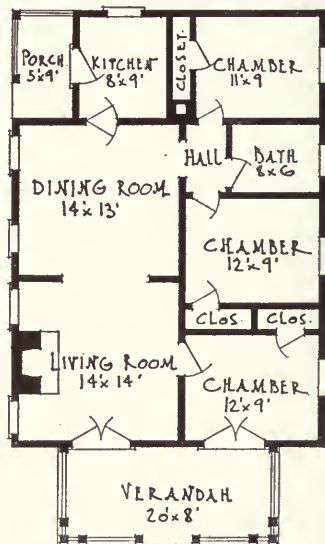
This bungalow so finished will grace any community or any setting. It requires a 35 ft. lot to look well, and it should be located on ground somewhat higher than the road.

It provides a splendid home for a family of five or six, with every convenience that such a home should have.

If the French windows opening from the front chamber to the verandah are objectionable, sliding sash windows will be provided in their place. All windows may be of the divided light pattern shown, or sash with single lights.

If the points of the compass of your building site would make it better to have the floor plan transposed, this can be done without additional cost.

You must admire the lines of roof and verandah and the large capacity of the latter, and will find them a source of permanent enjoyment.



FLOOR PLAN

See terms on page 5 and specifications on pages 11 to 13.





THE CLEVELAND

THIS is a bungalow better adapted to the Canadian winters than some. There are no valleys in the roof to act as snow traps and the pitch of the roof is sufficient to give no lodgment to the heavy snows of Canada.

The verandah and front steps are a pleasant change from the conventional designs, as are the square twin verandah columns which carry their share of the main roof.

An outside chimney with diamond light casement windows either side of it is a pleasing feature of the design, and has the advantage of not wasting any of the space in the house itself; neither is any space wasted in the ground floor.

The rear kitchen entrance is under the upper flight of the main stair to a grade entrance at the landing of the cellar stairs.

Two large sleeping rooms with closets and bathroom on the second floor make this one of the very popular Canadian bungalows.

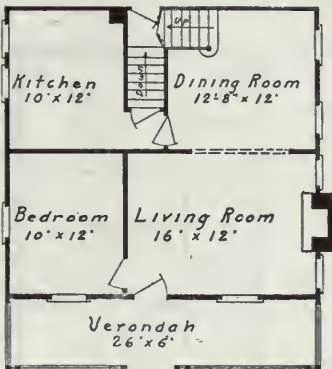
You know exactly how your home will look and what it will cost before you invest a cent.

Your home will be ready weeks or months before it would by any other method.

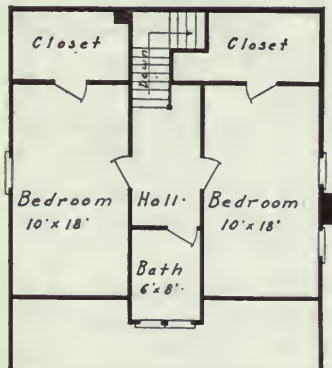
QUEBEC.—We consider we have saved about \$400.00 on the "Glenora" by your System.

A. J. GARDNER.

See terms on page 5 and specifications on pages 11 to 13.



FIRST FLOOR PLAN



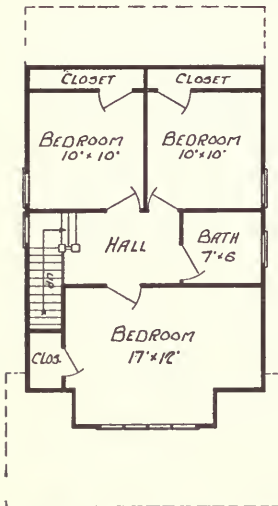
SECOND FLOOR PLAN





THE SUDBURY VI.

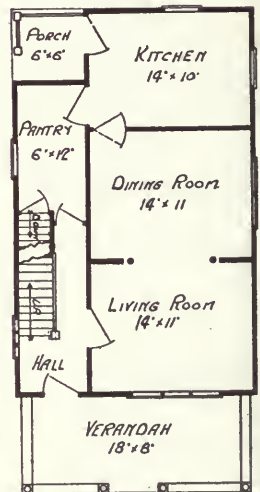
A SENSIBLE house for a narrow lot. If you have a lot of good depth but narrow frontage, anywhere from 25 ft. to 30 ft., you can improve it with this storey and a half house. By keeping your own counsel as to cost, it will not matter if the district is restricted to \$5,000 homes. It looks like a \$5,000 home, and it will cost that built by any other than the "Aladdin" System, and of course the only object of the restriction is to insure the building of substantial, good-looking homes, and this complies with both requirements.



SECOND FLOOR PLAN

Its battlement railed verandah with heavy columns and pediment over the front steps and the handsome dormer with mullioned windows, present a pleasing and attractive front elevation to the street.

Large well lighted rooms, conveniently arranged, make the interior as pleasing as the exterior and as homelike as can be found in a "Sabbath day's journey."



FIRST FLOOR PLAN

Can we send men to erect our houses? Yes, and good men too; but it is a needless expense of time and railroad fare, when local talent can do it just as well and at much less cost.

When we cut, fit and finish materials by machinery, we save you two-thirds of what it would cost you to perform the same work by hand. One machine often does the work of fifty men.

See terms on page 5 and specifications on pages 11 to 13.





THE HOMESTEAD

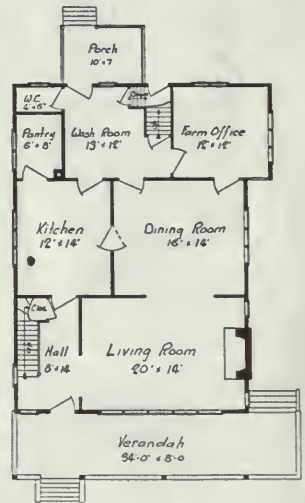
AGRICULTURAL Canada has given the world striking evidence of what it was capable of. Crops that astonished the world for their size brought unheard of prices. Farm owners who had taken the fat years with the lean years philosophically, and burdened themselves with debt to improve their lands so as to get the best and most lasting results, found themselves suddenly in easy circumstances, and the first thought naturally was to provide a better home in place of the old one—a home more in keeping with their improved condition. This made such a strong demand for houses adapted particularly to the life and business of the farm, that our designers gave their almost undivided attention to the work of designing suitable homes for the purpose. Practical farmers, practical builders, and expert designers all agree that the

“Homestead” leaves nothing to be desired as a farm home, to meet the needs of the most progressive farming community in the world.

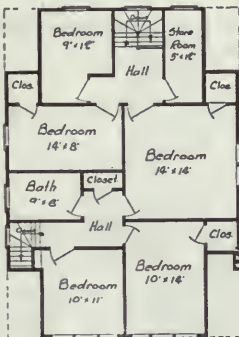
The living room occupies 20 ft. of the 28 ft. across the front of the house, and nearly its entire front is made up of a quadruple mullion window looking out on the verandah. While the living room is connected with the main hall and stairway by a colonnade and with the dining room similarly, by means of draperies it may be shut off from them when desired.

The dining room and kitchen with its big pantry in the rear, are models of excellence. The rear section of the ground floor, devoted to the business of the farm and a large wash room and stair to the second floor, is shut off from the social side of the farm life. Three large bedrooms with closets are accessible from the front hall, and two only from the rear hall. A good sized store room disposes of the balance of the second floor space in a manner that will be highly appreciated on any farm.

See terms on page 5 and specifications on pages 11 to 13.



FIRST FLOOR PLAN

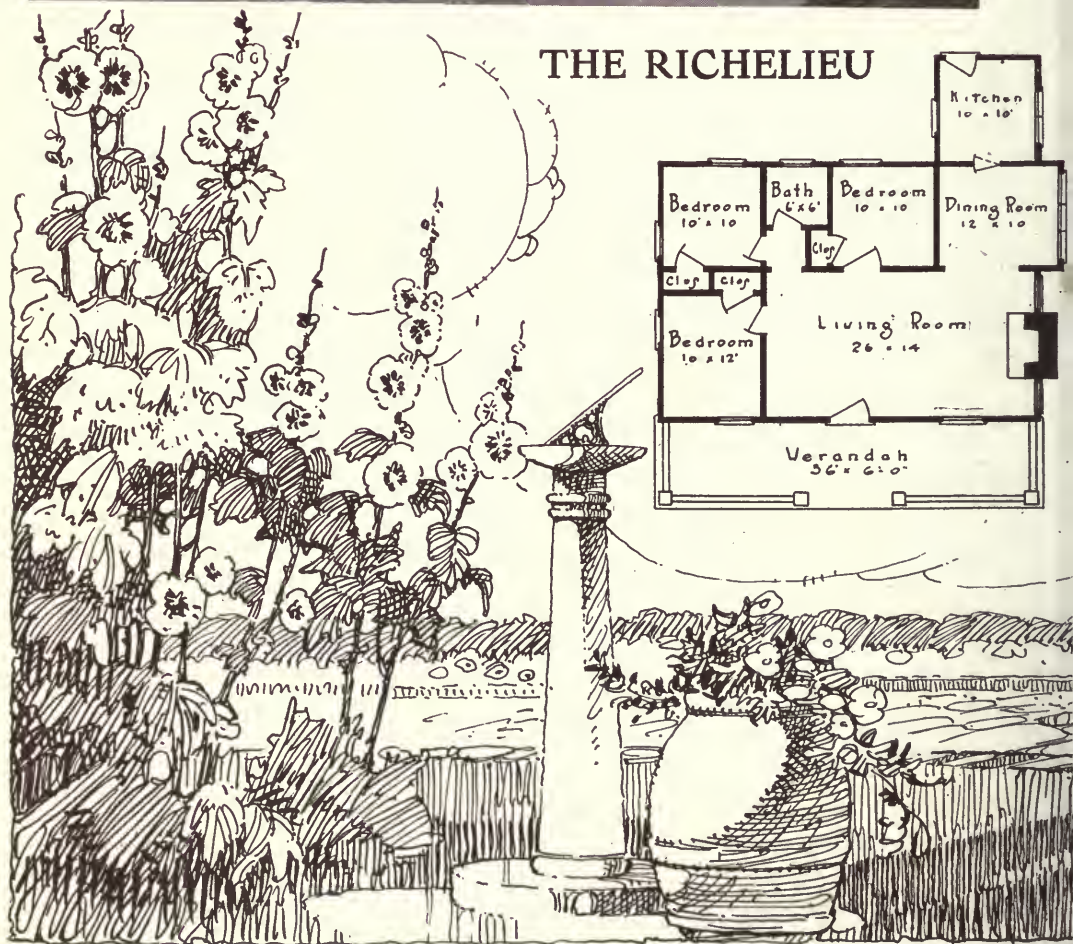
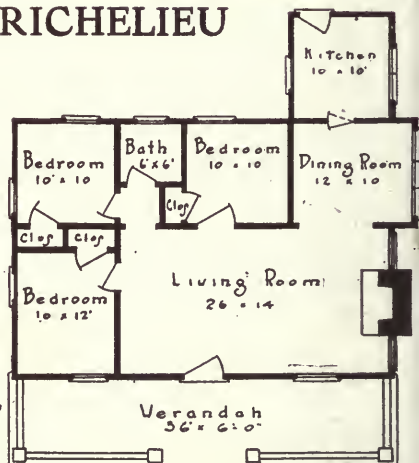


SECOND FLOOR PLAN





THE RICHELIEU



THE RICHELIEU is a milestone on our march of progress.

Each year of our Company life we have raised the standard of our houses and set a notch higher the limit of artistic merit that they had to surpass. This has meant the yearly elimination of many old and tried friends—homes which our system had dropped broadcast from the Atlantic to the Pacific, but which, when called upon to meet our rising standards, fell short on that indefinable thing called “class.”

The Richelieu, we can well believe, will not soon make way for something better; in fact, we can hardly conceive of an assortment of one hundred houses of quality in which it would not deserve a place.

In its expansiveness and low pitched lines there is a suggestion of hominess and hospitality.

In its windows, brackets, dormer and whole ensemble there is personality written; as you study the house you are momentarily expectant that the front door will swing open and the rather stout but extremely jovial owner will step out, accompanied by a couple of small children and a pretty wife.

For a suburban residence the layout is ideal and wonderfully flexible. Try the interesting experiment of fitting your family into it; unless your numbers are unusually great, you will find an arrangement that will just suit your convenience.

We are proud of this house; it has “Aladdin quality” designed, drafted and built into it, and that is our last word.

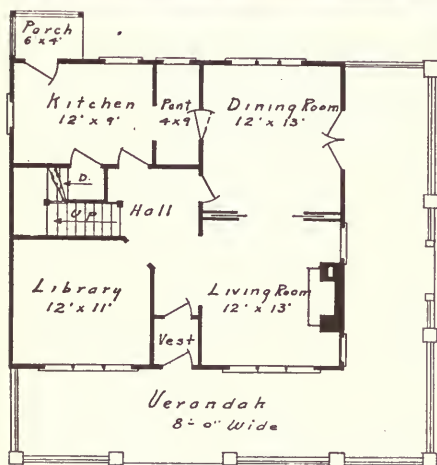
Own it and you are definitely placed in your community.



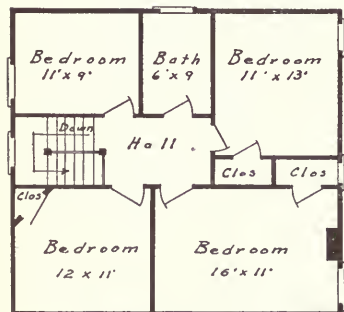


THE MONCTON VI.

If interested in this design, ask for alternative plan 140.



FIRST FLOOR PLAN



SECOND FLOOR PLAN

A VERY likeable feature of this home is its flexibility. Not that it will bend and give to the storms, for it is as rigid as the Rock of Gibraltar; but it is so easily fitted to your precise needs, as a good tailor fits your cloth to your form. In a country where everything is on a large scale the 8 ft. verandah across front and side is appropriate, handsome and useful, and gives it dignity and distinction; but if you prefer less verandah and less first cost the side verandah can be omitted without marring the symmetry or beauty.

If you wish it for a farm home and prefer bedroom or office to library on the ground floor, we can give you that, for a few extra dollars.

There is hardly anything you can want in a house, which we cannot give you in this design if you will tell us what it is, and it will not cost you a cent, until it fits your needs, and tastes, as the paper fits the wall.

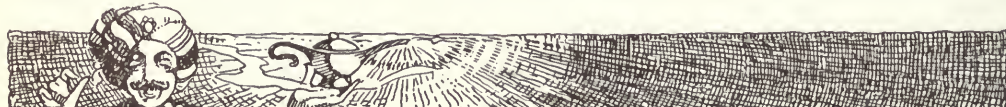
PLAIN DIRECTIONS and illustrations make it possible for anyone to erect "Aladdin" houses.

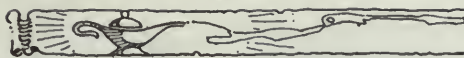
Save the Dealer's profits, the Middleman's profits, and the Builder's profits.

QUEBEC.—Am convinced I saved at least 25% on the cost of the "Glencoe" by using your system.

WM. STEWART.

See terms on page 5 and specifications on pages 11 to 13.





THE AVON IX.

SIMPLE, well balanced proportions with many unique features.

As its name might suggest, this is on the order of the English architecture. The subject of the photograph was stucco finish, but it is quite as handsome with the walls finished with siding.

The hooded verandah entrance with hanging lamps is an especially happy conception of the designer and will distinguish this house from every other in the community.

The porch at the right is intended to be screened in in the summer and can, if desired, be fitted with glazed sash in the winter and used as a sun parlor.

Note well the clever first floor plan giving in small space, central hall, good living room, dining room, kitchen and library and splendid pantry.

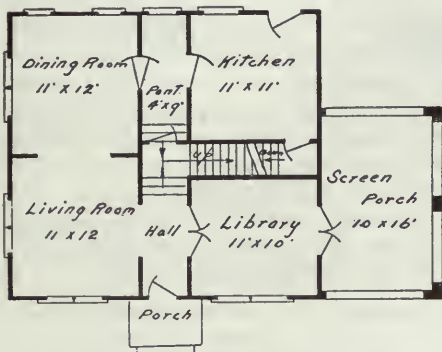
One medium and two large bedrooms and a big bathroom with good closets for each sleeping room, make this design a real home of comfort and luxury.

There is a feeling of character and individuality about "Aladdin" houses that is difficult to describe in words.

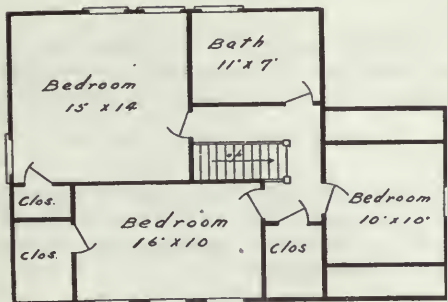
ONTARIO.—The "Evanston" is warmer than my solid brick house was. Have no storm doors or windows, but have no trouble in keeping warm.

ARCHIE HALLMAN.

See terms on page 5 and specifications on pages 11 to 13.



FIRST FLOOR PLAN

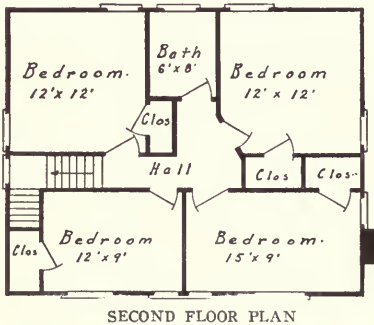
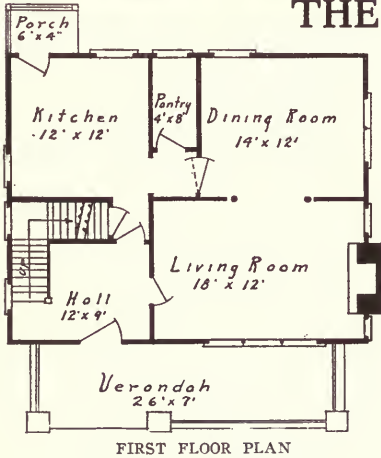


SECOND FLOOR PLAN





THE GENEVA VI.



AN old friend of those who have seen our former catalogues, but with new floor plan.

A better arrangement of the main stairs, enables us to offer you an enlarged living room, dining room the same as before, enlarged and better kitchen, and a second floor with four good, symmetrical bedrooms with closets and a bathroom better planned to receive the fixtures. These changes will add greatly to its value and convenience as a home where efficiency is aimed at and increase its already great popularity.

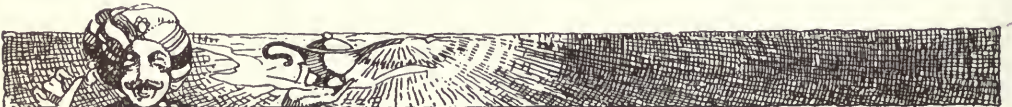
If siding is preferred for the second storey walls, instead of shingles, it will be furnished. Just look over the plans again and see what a remarkable eight room house you are offered for \$2,000.

ONTARIO.—The "Denver" No. 1, bought from you for Porcupine has been constructed at less cost and in quicker time than could have been done in the old manner.

CROWN RESERVE MINING CO.

The steel worker with a little hack-saw trying to cut and fit the steel girders of a skyscraper or bridge, would be no more out of place than the modern carpenter cutting sills, joists and rafters.

See terms on page 5 and specifications on pages 11 to 13.





THE FAIRFIELD X.

GIVEN a good sized lot, plenty of trees and shrubs, and the "Fairfield" will give you a home to come back to, second to none. We cannot brag of its looks as illustrated, because it was finished in a color you could hardly distinguish with the eye except on a bright day; but with a more contrasting color scheme of decoration, it is a beautiful home in a community of beautiful homes.

From the very nature of the design it should be set close to the ground, so that one may step from its wide verandah to the ground, anywhere. While the bay window slightly encroaches on the verandah, it still leaves plenty of room there, and the bay window adds so much to the living room that it is well worth while. You will see that the reception hall really enlarges the living room, so that it is 28 ft. long and averages nearly 12 ft. in width.

If a fireplace is desired in the outer

end of the living-room, casement windows for either side of it can be supplied in place of those shown.

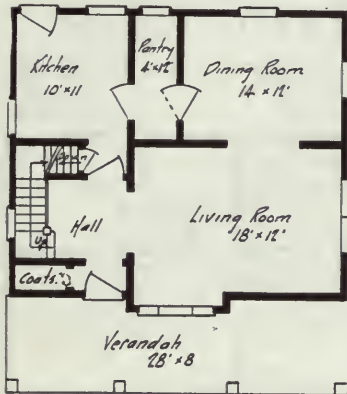
Simple, yet ideal, is the arrangement of dining room, pantry and kitchen with ready access from the latter to the cellar and front door.

A handsome winding stair introduces you to the hall on the second floor, from which open three good bedrooms and the bathroom. The dormer in the roof with its double mullioned divided light casement windows is an extension through the roof of the first storey bay window, and accents the beautiful lines of the roof.

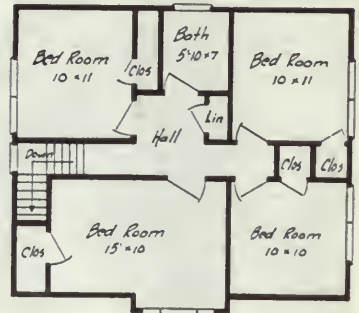
QUEBEC.—Your System saved me between \$500 and \$600 on my Parish House.

REV. FR. LEGARE.

See terms on page 5 and specifications on pages 11 to 13.



FIRST FLOOR PLAN



SECOND FLOOR PLAN

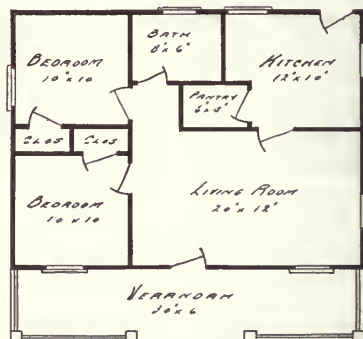




THE DENVER (30' x 22')

THE DENVER No. 1 (36' x 24')

WITH a plan that emphasizes comfort, this bungalow is designed to rest on a foundation rising just to the grade level, and the prices include cellar windows, except for the summer cottages. The beautiful belled cottage main roof and dormer roofs, and shingled side walls, with splayed window and door trimmings, make this an eye-filling picture. The shingles permit, in fact require, a stain finish for the walls, which, in contrast with the paint for the verandah and the window and door trimmings, gives the whole a mellow effect that robs it of any of the offensive appearance of "the new comer." As summer cottages, as well as winter homes, full ceilings are supplied to all rooms. In either type of construction siding will be furnished instead of shingles for the walls at the same price. And is not the floor plan ideal?



FLOOR PLAN

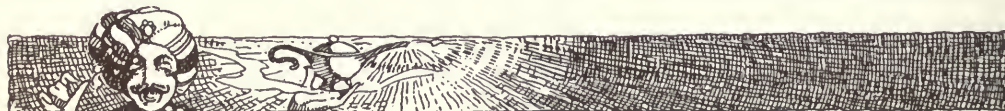
ONTARIO.—The various buildings shipped to us have arrived at Matheson in good condition. We find the materials supplied for these buildings to be of No. 1 lumber and the hardware of good quality. We have had no difficulty whatsoever in putting the buildings together, and find them to show an appreciable saving over those previously constructed here. Also wish to thank you for your prompt delivery of these buildings.

Yours truly,

CROESUS GOLD MINES, LIMITED,

JULIUS M. COHEN, Manager.

See terms on page 5 and specifications on pages 11 to 13.





THE HOMESTAKE

If interested in this design, ask for alternative plan 163.

A SUBSTANTIAL, warm little four-room home of the same superior quality as our more pretentious houses. Handsome, large windows and doors give a spacious effect to the interior, and as you can occupy but one place at a time, you will find yourself as comfortable in this as in a much larger home; and it is less care and expense to keep up, if you do not have to have the greater space.

Any man who is handy with tools can erect this house in his spare time or by devoting a few days to the work.

For the equivalent of two years' rent you can buy this home and own it for life and then pass it on to the wife or children.

ONTARIO.—*I figure your System saved me on the "Portland," \$300 without a doubt.*—IRA M. CUDNEY.



FLOOR PLAN

THE OLD

and

THE NEW



SOD HOMESTEAD



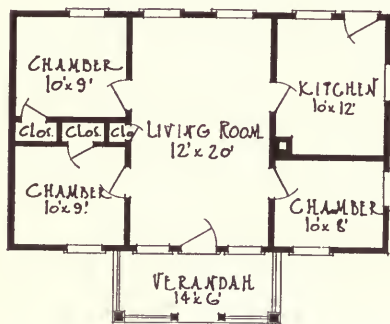
"READI-CUT" HOMESTEAD

See terms on page 5 and specifications on pages 11 to 13.





THE IDEAL X.



FLOOR PLAN

THIS is a new design born of the constantly increasing demand for an inexpensive bungalow with large combination living and dining room, kitchen and three bedrooms. It is as compact, well lighted and easily heated as any house you ever saw. It is not only highly favored by those who want a house only large enough to meet the needs of the family, without imposing on the housewife care of a big establishment, but is being called for in largely increasing numbers by farmers who wish to provide accommodations for married help, and large employers of labor, who find that the best help and the best results can be obtained by furnishing comfortable living quarters that will attract steady married men to seek employment with them.

This little bungalow can be made of greater capacity by the addition at the rear of one of our kitchen additions for summer use only, or for use all the year. It can be placed squarely at the rear of the living room or squarely at the rear of the kitchen, or overlapping both, so that the room on the floor plan shown as a kitchen, may be converted into another bedroom or a dining room as preferred. If the former, we would recommend moving the partition between it and the front bedroom two feet over to the rear, making it and the the front bedroom each 10' x 10' This latter change can be made without additional expense.

A 40' lot gives ample room for placing this bungalow to good advantage.

See terms on page 5 and specifications on pages 11 to 13.





THE DIXIE

If interested in this design, ask for alternative plan 135.

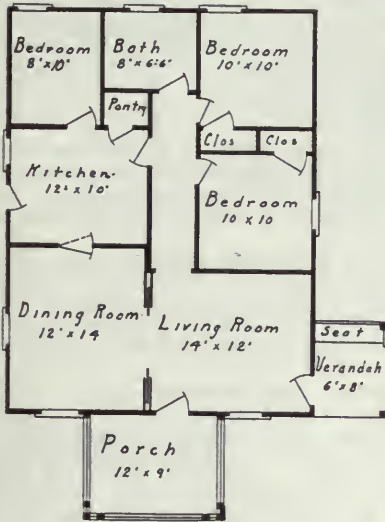
BEAUTIFUL and original, this is one of the best designs we have ever offered in a low priced home. It has all the beauty of the California Bungalow architecture but is perfectly adapted to the winters of Canada.

In the first place, it is substantial and warm in the roughest winter weather this side of the North Pole, and there is no tendency for snow to lodge on the roof.

The front door, opening from the pergola and the door opening from the living room to the verandah, make that room as bright and cheerful as a sunny day. A wholly enclosed verandah with a battlement railing, affords a delightful place to spend the summer evenings in comfort and seclusion.

Large general living room, one moderate and two large bedrooms, bathroom, closets and pantry, make a compact, convenient home, well worthy of its striking exterior.

If siding for the walls, or single light sash for the windows are preferred to those shown, we will gladly furnish them at the same price. When shingled walls are ordered, we supply shingle stain for them, as we would paint for siding.



FLOOR PLAN

You pay the freight no matter where or what you buy from a lumber dealer. The price you pay covers his freight, the wholesaler's freight and the broker's freight and their profits and handling costs.

You only pay for one handling and one profit when you buy an "Aladdin" house.

See terms on page 5 and specifications on pages 11 to 13.





THE TACOMA IX.

If interested in this design, ask for alternative plan 120.

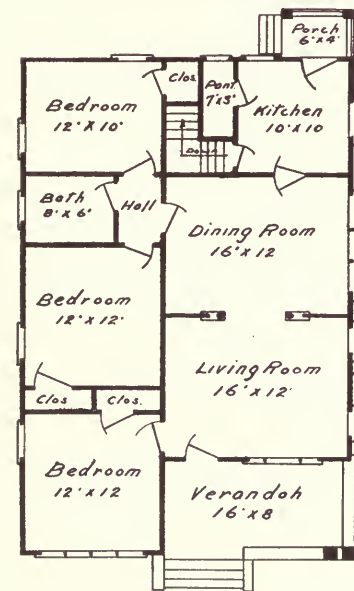
THIS beautiful bungalow was photographed before there was an opportunity to do the landscape gardening required to give it the proper setting, but it does not require much imagination to realize the effect of flowers, shrubs and trees properly placed at the sides and in the foreground, needed to complete the picture of artistic cosiness.

Differing from some, it is suited to a comparatively narrow lot, a 35 ft. or 40 ft. lot being all that is necessary to give it room. The overhang of the roof, while one of its strongest points of beauty, can be slightly reduced without injuring its appearance.

The verandah, 16 ft. x 8 ft. under the main roof, with battlement railing readily screened in if desired, sheltered on two sides from disagreeable winds, offers welcome and shelter to the arriving guest, and, supplied with porch chairs and hammock, is an important feature of this bungalow in pleasant weather.

Large and well-lighted living room and dining room, the latter connected by a double swing door with a convenient kitchen, all on one side of the house, leave the other side of the house exclusively for three big bedrooms with closets and bathroom. A feature that will be appreciated, is that only one bedroom opens directly from the living room and none from the dining room, the other two bedrooms and the bath being accessible through an inside hall.

Much thought was given this arrangement of floor space to make it in keeping with the great artistic value of the design.



FLOOR PLAN

Unless placed on very low ground, the foundation for this bungalow should not rise more than 12 in. to 16 in. above grade.

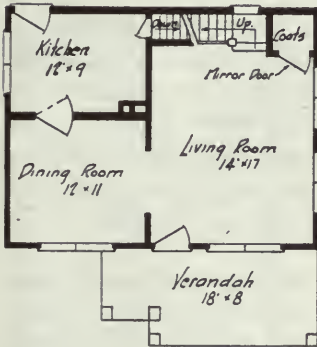
Front living room windows are the same design as front bedroom window.

See terms on page 5 and specifications on pages 11 to 13.





THE GLENCOE X.



FIRST FLOOR PLAN



SECOND FLOOR PLAN



HALF shingled storey and a half home of quality with individuality expressed in every line; appropriate for town or suburban life; noticeable for the verandah of almost severe simplicity with its massive square columns.

The casement windows on the ground floor with divided lights in the top are wonderfully effective, and yet do not obstruct the view from within. The second storey windows in the gable ends, with their hoods and flower boxes, are of the same pattern, and the front and rear casement windows are of divided light pattern to match.

Stained shingle second storey walls, exposed rafters, heavy brackets supporting the deep overhang, complete the picture of tasteful home designing.

Like all square houses it is easily heated, well lighted and thoroughly practical and convenient.

"Aladdin" house materials are shipped bundled and marked and are delivered to you clean and bright.

MANITOBA.—The "Suburban" is easily heated in zero weather. It is all and more than I expected it to be and saved me \$300.

W. B. RAE.

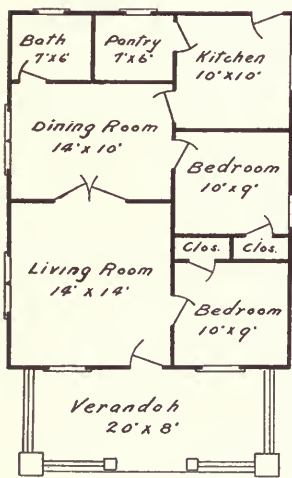
See terms on page 5 and specifications on pages 11 to 13.





THE CHAMPION VI.

If interested in this design, ask for alternative plan 172.



FLOOR PLAN

A BUNGALOW as simple as a cottage to erect, but with lines that give it all the beauty of a work of art, nothing weird, nothing that suggests the freak to the passerby—just a nice, square, cosy bungalow, with a roomy verandah with heavy square columns and low pitched roof. The exposed rafters of the main roof are pitched to agree with the verandah and with the correct outlines of the true bungalow.

A pleasing variation of this design can be effected by using short piers rising only to the verandah sills and columns extending from floor to roof, and the use of single lights of glass for the upper sash of the windows. In either form it stands a model of good taste and discriminating judgment.

A Colonnade may be ordered in place of double glass doors between dining room and living room without affecting the price.

Make up your mind to build now, and build RIGHT.

"Aladdin" homes are permanent, NOT PORTABLE.

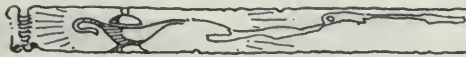
The Bungalow is a success entirely and everybody that visits us says so. You may refer to me. Thanking you, I remain.

PINE LAKE, ALTA.

H. W. GARDINER.

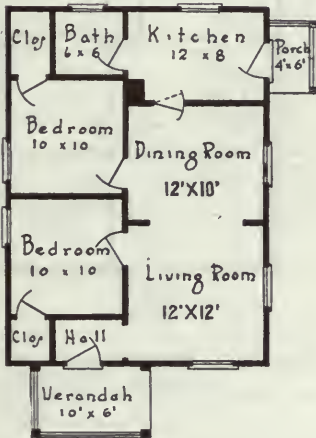
See terms on page 5 and specifications on pages 11 to 13.





THE JEANNETTE VII.

If interested in this design, ask for alternative plans 103-121-151-171.



FLOOR PLAN

AS DAINTY as a doll's house, and while costing little more is far more commodious and lasting and useful. A sure favorite with those wishing a living room which does not open to the outside. A vestibule, while taking little room in the house, is a great comfort giver. The living and dining rooms, connected by a colonnade, may, when desired, be converted practically into one room. Good kitchen, bathroom and two bedrooms, each with its individual closet, round out a very excellent design.

The kitchen door and window can be transposed, if desired, and the verandah entrance can be made from the front instead of the side, quite as well and without increasing the cost.

Where else can you find such value for your money?

(1) Only thirty-five per cent. of the original tree emerges in the form of a building.—SATURDAY EVENING POST.

(2) A safe estimate of good lumber wasted in course of construction is twenty-five per cent.—RETAIL LUMBERMAN.

(3) Under the Sovereign System the waste is reduced to two per cent.

ONTARIO.—The "Glenora" you shipped me was all first-class material, went together without trouble, and I estimate you saved me \$600.

MRS. G. L. MAGANN.

See terms on page 5 and specifications on pages 11 to 13.



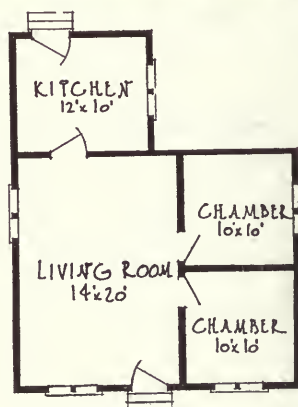


THE ROSELAND

SOMETHING new in a four room cottage for the man of small family but with a desire to have his home his castle.

It is just as substantial and warm as the best dwelling in any community. It is well lighted, can be well ventilated in the summer, and is easily cared for, all features which appeal to the housewife. If the building site is a small lot, it will still leave plenty of space for flowers and vegetable gardens.

A very few years of paying rent to a landlord would amount to more than the price of this house and a suitable lot. It is splendidly adapted for the use of a tenant farmer or married farm help, or for the use of employers of big industrial concerns, who find it pays to provide their men with comfortable homes convenient to their work.



FLOOR PLAN

Canadian Aladdin Co., Ltd.,
Toronto, Ont.

YOUNG AVE., HALIFAX, N.S.
DECEMBER, 13TH, 1917.

My Dear Sirs:—

Our Aladdin home, the "Villa," stood the recent shock better than the other houses near it. The strain on the building was enormous, yet only the glass of the street door was broken, two of the casement windows were blown open, but not shattered, the lock of the street door was bent, and a little of the wood fractured. In the basement most of the windows were broken and the basement door had one panel cracked and was burst open, shattering the jamb at the latch.

The pressure of the two main explosions was exerted East to West and West to East, the whole of the house being enveloped in terrific disturbances.

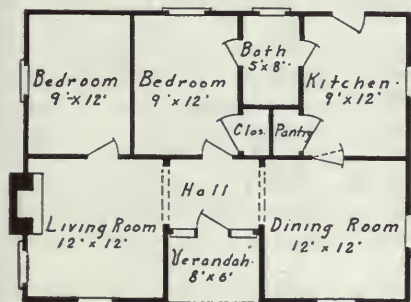
Yours truly,
C. O. MACDONALD.

See terms on page 5 and specifications on pages 11 to 13.



THE GLENSIDE.

If interested in this design, ask for alternative plan 105.



FLOOR PLAN

YOU say you do not like a home where the front door opens into the living room? Well here is the answer to your objection.

A small dwelling with inset verandah and the entrance into a square hall, which can be shut off from or thrown open to the handsome living and dining rooms.

A fireplace with its outside chimney, always a nice feature of the home, can be omitted, and the window placed in the centre of the side wall.

If bath is not required, it can be omitted and the pantry and closet re-arranged and the space saved

divided as you like between the two bedrooms and the kitchen.

If a cellar is provided, entrance should be by an outside cellar-way as shown on page 92.

The dream of the young man come true, the ambition of the mature fulfilled.

When you forget or make mistakes—you pay the bill. This is RIGHT.

When the Architect makes mistakes or forgets				} YOU PAY THE BILL. It is always your money —not the other's. THIS IS WRONG.
"	"	Contractor	"	
"	"	Carpenter	"	

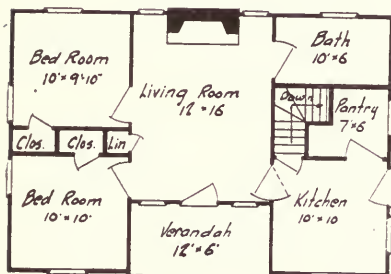
WASTE.—High authorities claim only 35% of the tree emerges in the form of a building; that 25% of the good lumber is wasted in the course of construction. WE KNOW you will pay for 18% waste when you build the old way. \$18 out of every \$100 you pay for your home, is for material you don't get into your building. We have reduced this item to less than 2%.

See terms on page 5 and specifications on pages 11 to 13.





THE GLADSTONE X.



FLOOR PLAN

WITH simple lines that give great value for the money, this is a charming little bungalow of five rooms with roomy verandah under the main roof. Exposed rafters and divided light door and upper sash make the exterior very attractive. A big living room with fireplace at the rear flanked by casement windows, a good kitchen, two bedrooms and a bathroom, provide everything required to make a small family comfortable.

With a little plot of ground about it for flowers and fruit, the dweller in the "Gladstone" need envy no one his home. Some of the biggest manufacturing companies are providing large numbers of these for their employees, finding it greatly increases their efficiency to have them so well housed.

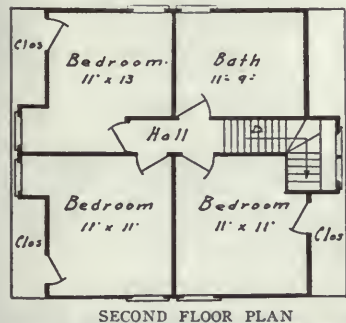
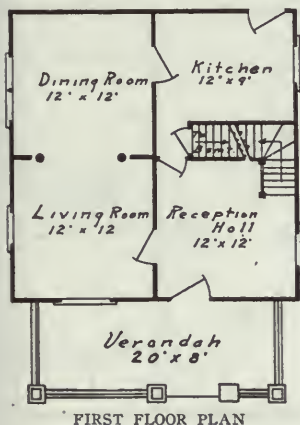
An "Aladdin" House when finished is exactly like any other well designed, well constructed frame house. It cannot be taken apart except as you would tear apart any good house. The difference between an "Aladdin" house and the best house a builder would erect from plans furnished by a consulting architect is simply a difference in where you buy the material, how much you pay for it, and the methods used in bringing it to a finished state.

See terms on page 5 and specifications on pages 11 to 13.





THE RICHMOND VI. (for Brick Veneer) RICHMOND VI. (All Frame)



A GENTLEMAN who owned some vacant property thought he would build himself a home on it, where he could live in comfort or if he later chose, could sell or rent it and justify either use of it as a good investment, and he selected this design, brick veneered.

Putting on a kitchen addition not shown in the photograph or on the floor plan, and not included in our price, a 24 ft. x 24 ft. cellar with a concrete wall and concrete dividing wall, including carpenter work, painting, glazing, plumbing, plastering, wiring and heating, all ready to move into, when labor was dear, he freely admits that we saved him a substantial amount of money and gave him a good job.

It was a clear saving of \$1,000 as against any other method of construction.

When ordered for brick veneer, we supply 7/8 in. matched sheeting for the outer walls and special door and window frames.

Brick and masonry materials are not included in the price, as it would be doubtful if you could afford to pay freight on them from our mill, when you can get them locally with no freight to pay, just about as cheaply as we can.

The Canadian Aladdin Co., Ltd., trade mark (copyrighted) stands for Quality, Courteous Treatment and Square Dealing.

Eight years of public confidence and an ever widening demand for our work, prove that we live up to that standard.

See terms on page 5 and specifications on pages 11 to 13.





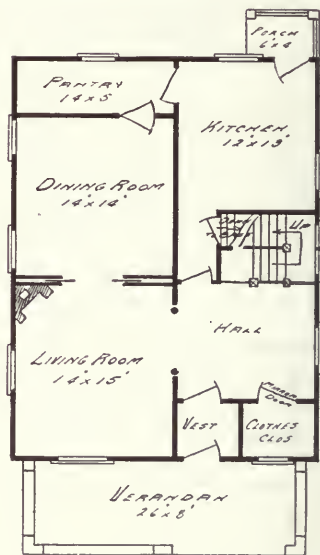
THE MANOR

A MANOR HOUSE was in olden times the residence of a feudal lord or baron. In modern times the name is applied to a home of lordly mien, the social centre of the estate which it graces, generous in its proportions, hospitable in its aspect without ostentation, but bearing the evidences of taste, refinement, comfort and ease.

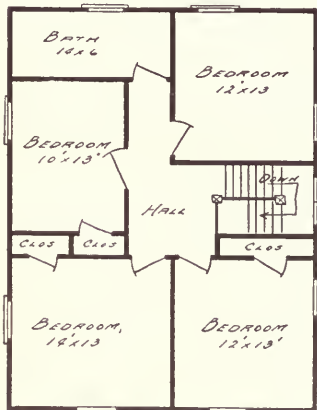
It should have large, well laid-out grounds, and where, as in the photograph, the second storey walls and the verandah are of stained shingles, the first storey and the trimmings should be done in white or cream, and the window sash in black. If the upper walls are finished with siding, the same as the lower walls, which they may be at the purchaser's option, a wider variety of color scheme is available.

The twenty-six foot verandah, eight feet in depth, with battlement railing, is the first and one of the most pleasing impressions received of this home.

The vestibule admits you to the reception room or hall, from which opens a coat room with its full length mirror door. Directly before you rises the handsome winding stair, and to your left through the colonnade you view the large living room lighted from two sides, with its corner fireplace, the fireplace offering the last suggestion of feudal days. Separated from the living room by sliding doors is the 14 ft. x 14 ft. dining room, served from the kitchen by way of the pantry with its double swing door. Cellar stairs and door to the reception hall open direct from the kitchen.



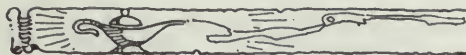
FIRST FLOOR PLAN



SECOND FLOOR PLAN

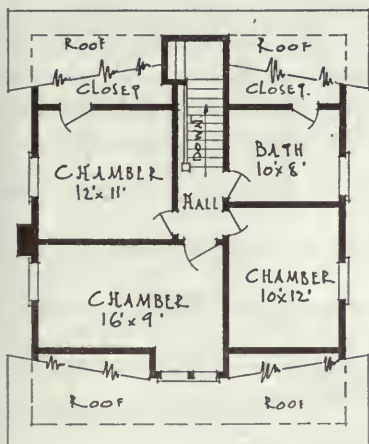
See terms on page 5 and specifications on pages 11 to 13.



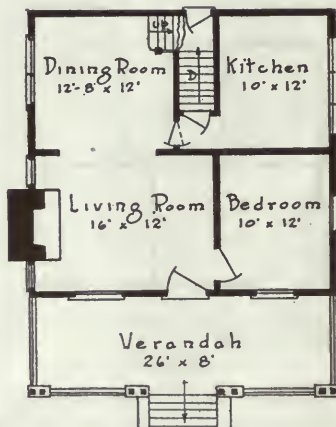


THE HOLMWOOD IX.

NO apology is needed for the name given this design. That it is a home of taste and refinement stands out clearly in every line of the building itself, and its location as illustrated is further proof, if one were needed, that its owner is possessed, not only of a fair share of this world's goods, but of that which money cannot buy—a fine discernment which selects a home of this type and places it in such beautiful surroundings.



SECOND FLOOR PLAN



FIRST FLOOR PLAN

We offer you here the home—a gem worthy of the finest setting you can give it. Be it town or country, prairie or upland, the choicest building site you know of is none too good for it. Among the hardwood trees of the East, or the soft timber of the North and West, it is always beautiful, always home-like, warm, cozy and altogether charming. Where a natural wood's setting is not obtainable, shrubs and flowers judiciously placed will frame it almost as well until the growing trees have matured.

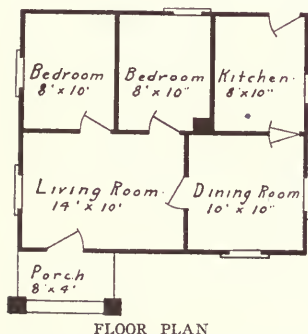
See terms on page 5 and specifications on pages 11 to 13.





THE ERSKINE

If interested in this design, ask for alternative plan 108.



ALL the essentials of a small home in a nutshell. An ideal home for a small family of from two to four persons. No useless space to care for or heat in the winter. Splendid design for a farmer who wishes to provide a home for married help; also greatly in favor with industrial and mining companies who need comfortable quarters for their married employees. Costs no more than an ugly shack, and its snug beauty gives its occupant self-respect and the respect of his neighbors and makes him a contented, useful and happy member of his community.

When you buy an "Alladin" home, you or your carpenter simply nail it together on the site. You don't have to wait months for your home to be completed.

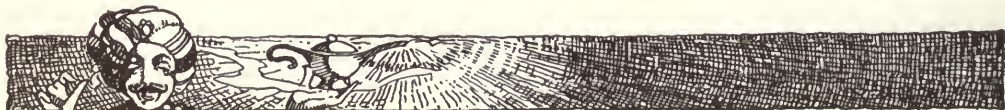
"ALADDIN READI-CUT" SUMMER COTTAGES are illustrated and described on pages 76-88.

Can you think of a friend who intends to build? You can do two favors by letting us have his name—one to him and one to us.

QUEBEC.—The cost of erection and painting the "Redcliff" houses purchased from you, was very small, and we are entirely satisfied and intend to build more.

MISSISSQUOI MARBLE CO.

See terms on page 5 and specifications on pages 11 to 13.





THE BRUNSWICK

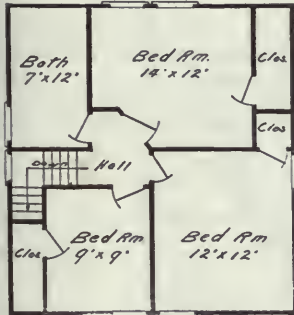
ARE you interested to know just what the average Canadian citizen wants in a home? Well, here it is. The Brunswick is still winner in our popularity contest.

Of the thousands of people with whom we correspond throughout the year in reference to houses, practically all express a preference for some one or other of our catalogue designs; a record of these preferences is very carefully kept, as it is the best possible index to trend of popular taste, and for the past two seasons the Brunswick, of all the designs in our catalogue, was the one in greatest demand. We attribute this principally to the fact that it is a splendid example of the "semi-bungalow"—the storey-and-a-half house with bungalow lines—the art and architecture of California adapted to our northern climate; and in a lesser degree, its wide appeal is due to its excellent floor plan.

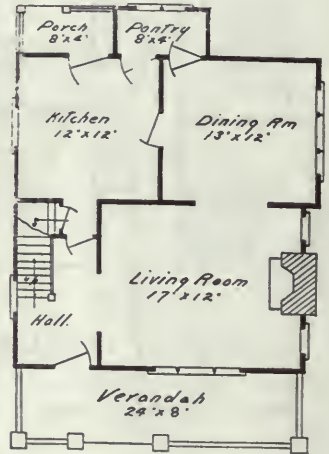
If you have not already studied the floor plan, before you do, take a pencil and paper and make a list of what you consider to be the essential features of a six room house; it will probably read something like this: Large bright, living room and dining room; a kitchen not smaller than 10 ft. x 10 ft.; a pantry, an inside cellar entrance, a front hall for privacy, access from kitchen to front door without going through dining room; three bedrooms in graduated sizes—a good bedroom, a better bedroom and a best bedroom, all to have closets; a large front verandah and a small rear porch, and a bathroom, preferably over the kitchen.

Now if you will compare these ideal specifications with the floor plan, you will see why we have said it had "an excellent floor plan."

See terms on page 5 and specifications on pages 11 to 13.



SECOND FLOOR PLAN



FIRST FLOOR PLAN





THE EDEN IX.

IF you do not like diamond light windows—if you do not like masonry verandah piers, do not condemn this bungalow, for we can furnish it equally well with full length verandah columns and divided light or single light upper sash for the windows.

When you come to examine the interior, you will see that the large living room is well lighted by the front window and the two casement windows, one on either side of the fireplace; that a wide opening leads to the 11 ft. 6 in. x 13 ft. dining room, with its outer wall consisting largely of a mullioned window, making this the most cheerful room in the home. An 11 ft. 6 in. x 11 ft. kitchen makes it possible to provide cupboard room if desired or place a kitchen cabinet, leaving the kitchen still of good size.

Three good bedrooms, each with closet, may be used as indicated or, a den may be made of the third bedroom. Space shown as second floor stairs, to be used as a hall closet unless the second floor is finished. There is room for two good bedrooms on the second floor each 12 ft. x 12 ft.

Second floor finished, with stairs, extra.

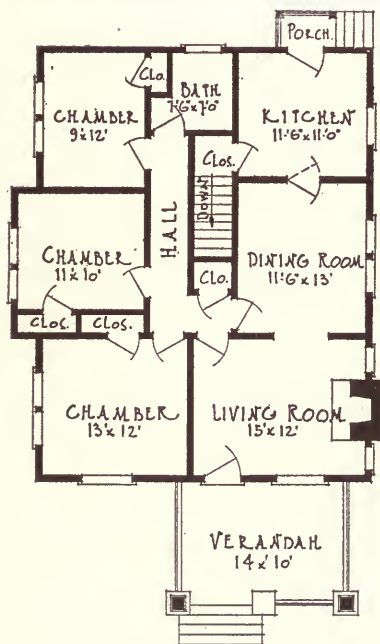
ONTARIO.—The "Glenora" material was first-class and went together fine.

M. J. MULLOCK.

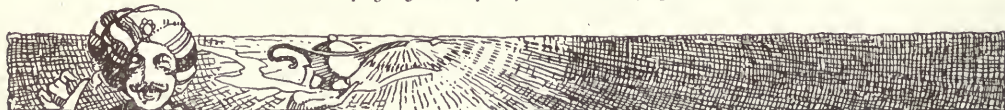
CAN YOU THINK OF A FRIEND WHO EXPECTS TO BUILD?

If you can, won't you send us his name, so we can mail him a copy of this catalogue, thereby earning his gratitude and ours?

See terms on page 5 and specifications on pages 11 to 13.



FLOOR PLAN





THE OTTAWA VII.

THIS is a handsome storey and a half house and has long been a prime favorite in spite of the fact that it has been poorly represented in previous catalogues. The present illustration does it full justice, and the houses themselves have been so widely placed throughout Canada that there is a strongly growing demand for them and it is well deserved.

Essentially of the square type, it has all the advantages which go with that type: low initial cost for the amount of space provided; convenience of arrangement, and many months of the year that most desirable thing in a house, easily heated.

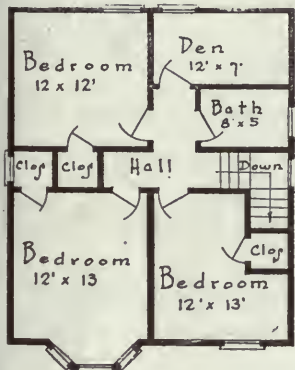
Simply laid out, the floor plans are models of excellence; no cubby holes, no waste spaces, no difficult corners to furnish or

hide; every room large for its purpose and well lighted; plenty of closets, and altogether convenient.

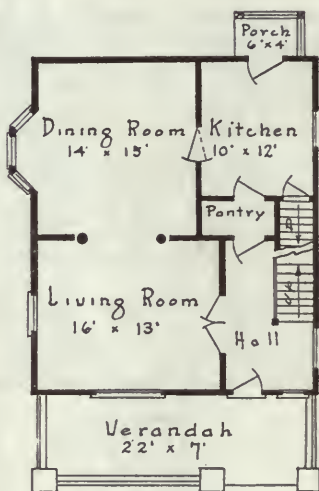
ONTARIO.

My "Richmond" is a good house and a cheap one. You saved me \$300 or more.

G. S. SMITH.



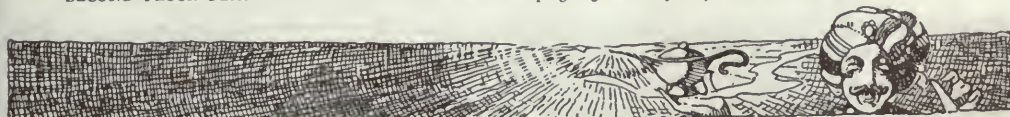
SECOND FLOOR PLAN



FIRST FLOOR PLAN

DON'T CONTRACT the erection of an "Aladdin" house. If you cannot do it yourself, hire a dependable man by the day to take charge of it. It will cost you less and be more satisfactory.

See terms on page 5 and specifications on pages 11 to 13.



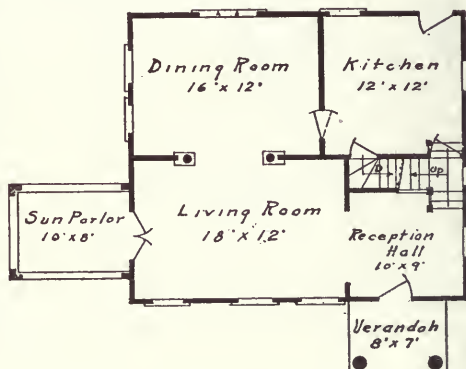


THE CEDARS

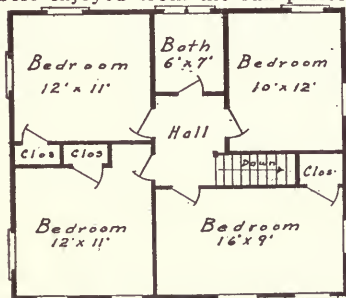
THE true homelover's eye will be at once attracted to the "Cedars" by its distinctly homey look. The outside blinds give the needed touch of color and finish if the walls are of stucco, and carry the impression that here is a home that is not an interloper; a home that has seen the comings and goings of a generation or more; and will be a home to see the comings and goings of other generations.

In some respects it suggests the colonial home of earlier days, made more attractive and perfect by the art of the Twentieth-Century designer and builder.

It has especial value where the formal entrance must be on one side of the house but the most engaging view is from another side, where it can be best enjoyed from the sun parlor.



FIRST FLOOR PLAN



SECOND FLOOR PLAN

As the floor plan can be transposed it is adapted to any situation.

If siding is preferred to stucco for the walls, we recommend the omission of the outside blinds, as the contrast of different paints for windows and door trim, cornice, corner boards and water table, with the wall paint, will afford plenty of decoration to relieve it from plainness.

Large, well lighted, general purpose and sleeping rooms and bathroom, leave nothing to be desired of the interior.

Rear stair leading from the kitchen to second floor is an especial convenience.

See terms on page 5 and specifications on pages 11 to 13.

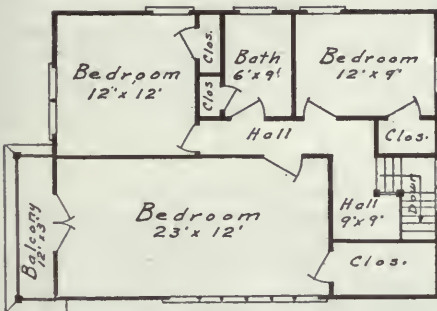
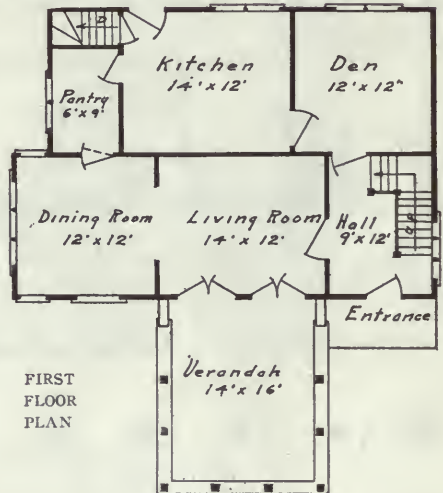




THE ELMWOOD

A HOME with all the advantages of a square house, without its uncompromising lines. A hooded entrance gives access to the house without need of crossing the huge 14 ft. x 16 ft. verandah. This verandah with its cottage roof in keeping with the main roof, connecting with the living room by two pairs of French windows, is quite the most desirable place in the house. Screened in the summer and fitted with glazed sash in the winter, it will be the popular portion of the living room, with its outlook in three directions, at all times.

Large kitchen, pantry and dining room—the latter exceptionally well lighted—are thoughtfully and conveniently arranged.



The den may be used as such, or as a ground floor bedroom if preferred.

One ordinary, one large, and one extra large bedroom and closets share the second floor.

Do not miss the lighting of the front bedroom and the French windows opening on to the balcony.

An ideal home for city, suburb, or country.

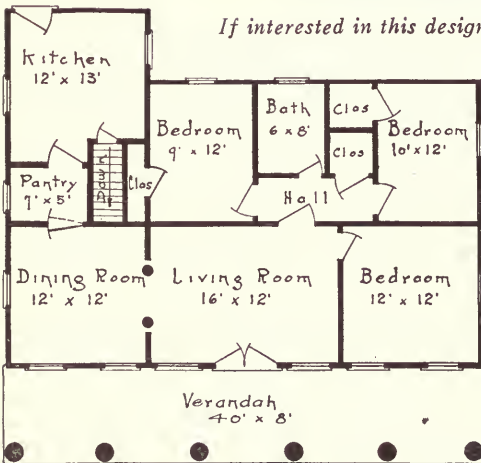
See terms on page 5 and specifications on pages 11 to 13





THE KENTUCKY X.

If interested in this design, ask for alternative plan 114—32' x 32'.



FLOOR PLAN

kitchen. Three large bedrooms, with closets and bath, complete one of the most desirable and convenient floor plans possible.

Emergency rooms can be provided in the attic at slight added cost.

First cost is last cost and complete cost if you order an "Aladdin" home.

*The Pyramids were Read-Cut.
The C.P.R. Bldg. was Read-Cut.
Aladdin Houses are Read-Cut.*

*The Pyramids are not Portable.
The C.P.R. Bldg. is not Portable.
Nor are Aladdin Houses Portable.*

Quoted without Shutters.

See terms on page 5 and specifications on pages 11 to 13.

STILL a prime favorite with those who wish their home all on one floor and who have a building site with frontage enough to receive it. Simple, but elegant, it commends itself to all. Kentucky hospitality is expressed in all its lines.

To appear to its best advantage, this bungalow should be placed close to the grade level, about as shown in the illustration, as heavy porch columns without railing add to its air of welcome, and "safety first" would require a railing if the verandah floor were higher.

Single or double front door, with or without glass, leads directly to the heart of the home, the living room, the size of which is made elastic by the colonnade to the dining room on the left. This can be closed with draperies as desired or left open to give spaciousness to the living room. Do not overlook the large butler's pantry through which access is had to the





"What does it cost to erect an Aladdin Read-Cut house?" is a question that every prospective buyer will ask.

One storey Bungalows of the type of the design Champion will cost to erect, about 20% of our price.

The Suburban and other storey and a half houses will cost 20% to 25% of our price.

The Manor and other two-storey houses will cost 25% of our price.

These costs will vary with one thing only—the industry of the workmen. All the materials for the whole house are lying sorted, bundled and marked, ready to hand. The position in which they are to be placed is graphically shown on the Plans. There is no excuse for delays or loafing on the job. The materials can be placed just as fast as nails can be driven.

Montreal, Dec. 23rd, 1918.

Canadian Aladdin Company Ltd.,

Toronto, Ont.

Gentlemen;—

We have experimented with Aladdin Houses this summer, erecting seventeen of them at Shawinigan Falls. The experiment was very successful and entire satisfaction was the result. I believe that the principle back of the ready-cut scheme is sound, both from a standpoint of initial and maintenance costs. One feature particularly in regard to your houses, is the dry lumber used. The saving in maintenance cost cannot be too strongly emphasized, as I have maintenance costs of other houses and know approximately what I believe is one of the strongest arguments in favor of ready-cut houses. The other feature of course, is the comparatively low initial labor cost.

Yours very truly,

W. E. Bonyun



SUMMER COTTAGES



GENTLEMAN who is a customer and friend of ours once said to us, "The question is not, 'Can I afford to own a Summer Cottage' but 'Can I afford to be without one'; my children are growing up and there is a debt that I owe to them."

It is a debt that every man owes to his family, to have an unpretentious little place on the lakes where he can send them out of the hot, dusty city, where the wife can take things easy for a while, and the children can run loose, a place not too far from town so that he can join them, not only for his holidays, but over the week ends.

Every red-blooded man knows what it is to feel in the Spring "the call of the woods," the keen desire to get off the sidewalks and feel the ground under his feet. It is simply Nature's warning that his body is not standing the strain of the artificial life that he has been leading, that he must get away from civilization and relax for a time. If it is necessary for the grown man to come back to Nature every year, how much more

important must it be for a growing child? Can anyone doubt that hearty, hungry, sunburnt children, living in the open air, are absorbing into their bodies health and sanity and all the qualities that make for future good citizenship? To many men, the solution of this difficulty has always been the Boarding House or Hotel at some popular Summer Resort, but the Summer Hotel at best is a poor substitute for a cottage of your own, the meals and sleeping accommodation are far short of what you have been accustomed to at home, there is little privacy, and your fellow guests are often far from congenial; and when the Summer Hotel is not "at its best," your only consolation lies in that you can spend most of your time outside of it.

We have often wondered why the public continues to pay from ten to twenty dollars a week for six dollars' worth of this kind of accommodation. Hard-headed business men cheerfully part with the excess over six dollars when they know that it has bought nothing but privileges of the sun and air, and the freedom of the lake and woods. They probably pay cheerfully because they have for some weeks been imbibing good cheer from Nature, but it would seem that with the returning sanity of their office desks they would begin to question the right of their hotel proprietor to put "all Nature" in the bill. The answer to all this is of course very obvious: if you buy or lease a lot it will be exactly the lot that you want; if you build your own cottage you will have exactly the accommodation that you want; your "fellow guests" will be your family and intimate friends, your meals will be "home" meals, and your COSTS will all be legitimate costs with no "blue sky" added.

In no branch of the building business does the Read-Cut system of manufacturing houses apply to better advantage than for the Summer Cottage, which is commonly erected at some distance from town, where skilled labor is not easily procurable, and a constant personal supervision is not possible. The Canadian Aladdin Company supplies all the material for the whole house; it is delivered in one consignment on the lot; we send with the material simple Plans and explicit Instructions for the erection. There is no defective material, as we guarantee the quality of every piece. There will be no delays, as everything required lies ready to hand. The Read-Cut method does away with need for skilled labor and our complete Plans and Instructions make expert supervision unnecessary.





Please bear in mind that our Summer Cottages" are constructed to last for years; they are identical with our winter construction, (see pages 11 to 13), except that we do not supply interior lath and plaster, wall board, sub-flooring, or trim for the interior, and studding, rafters, and joists are generally spaced on 24" centers, and ceilings are omitted for the rooms immediately under the roof unless otherwise stated.

The partitions are all of fine beaded or V-Joint matched lumber, everything dressed four sides, so that the interior may be oiled, stained, painted, or left in the natural wood, always presenting a smooth finished surface.

Prices cover all the material needed to make a complete finished summer cottage, including hardware, exterior paint or stain, glass and putty everything, in short, except foundations, chimney, and such lighting, heating and plumbing fixtures as the customer may elect to use.

These vary so widely that we cannot well include them in prices of either the winter dwellings or the summer cottages.

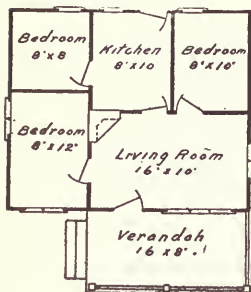
Individual taste in summer cottages differs so much that it is very difficult, in an ordinary sized catalogue, to even approximately cover the field.

Very probably you want a cottage like one that you have seen somewhere on your summer outing. Do you happen to have a photograph of it.

If not, you can undoubtedly describe it very closely and even make a rough sketch showing the Floor Plan and giving some idea of its appearance.

If you will do this we possibly have on file something very like what you want; if it proves that we have not, our Service Department can work up some provisional sketches for you on very short order. Let us try.





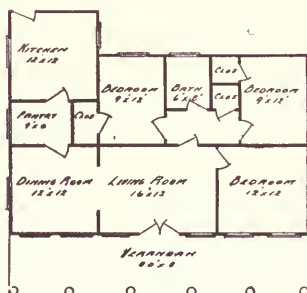
FLOOR PLAN

AMPLE living room for the summer for a family of six.

Can be readily enlarged as your needs grow. Considering the many windows and doors, exceptional value for the money.



THE SHARBOT

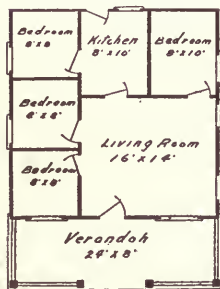


FLOOR PLAN

A DESIGN and floor plan similar to the "Kentucky" but offered as a summer cottage for much less money. All rooms with full ceilings.



THE BERMUDA

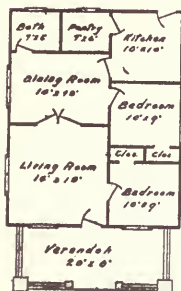


FLOOR PLAN

A YEAR after year summer home for half a dozen grown people and children. Exceptionally good living room and verandah; attic can be finished for emergency sleeping rooms at little cost. If interested in this design, ask for alternative plan 113.



THE HEWITT



FLOOR PLAN

SUITED to a good locality and a small family. If bathroom is not required, a third bedroom can be provided at no increase in the cost.



THE GEM

See terms on page 5 and specifications on page 77.

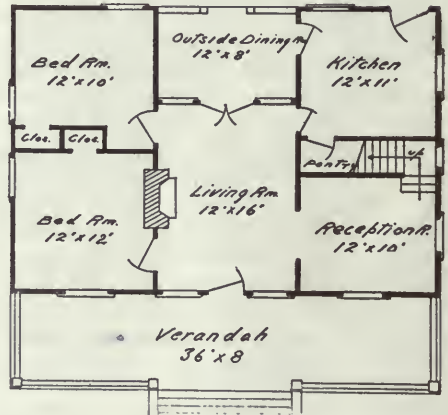


THE EASTBOURNE

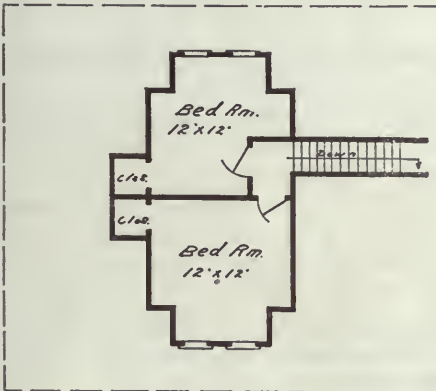
NATURE lovers not averse to the comforts of home, while communing with nature, will find in this, their dream of summer luxury come true.

The belled main and dormer roofs and exposed rafters and the splayed window and door trim and the deep comfortable verandah, look well in any setting, bush or beach, and make it in great demand among the Thousand Islands and the Lake resorts.

It has every comfort of a home and perhaps some you miss at home. The verandah and all ground floor rooms have full ceilings, but the second floor rooms are open to the rafters.



FIRST FLOOR PLAN



SECOND FLOOR PLAN

Note how splendidly you can provide for your family for the summer, and put up your friends for the week end if you turn from the heat and worry of the city to this, as your summer home.

School Houses "Readi-Cut", to Government design. Prices and plans on application.

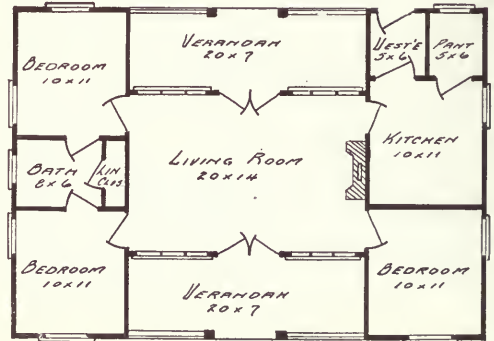
"Readi-Cut" house materials fit together like the parts of a watch, and with our detailed plans and instructions you cannot make mistakes or get stuck.

See terms on page 5 and specifications on page 77.



THE FAIRPORT

ONCE in a "blue moon" there is designed a house in which exterior lines and interior arrangement have a perfect fitness. As such a happy combination, we commend to your attention our "Fairport" bungalow. A low pitched roof with flaring belled eaves, glass doors, windows and more windows—all in perfect proportion. Inset verandahs both front and rear (screened of course) which are separate sun rooms or part of the great living room according to whether the dividing French doors are open or closed. The living room, by the way, has a twelve foot ceiling—a twelve foot ceiling and forty feet of windows.



FLOOR PLAN

To the left of the living room are two fine bedrooms, each with private access to the bathroom and its contained linen closet. To the right of the living room is another large bedroom, and ample kitchen, a pantry and a vestibule entry with an alcove for the ice box.

Give this bungalow a "woods setting," preferably on ground with a slight elevation, run a neat gravel walk up to the front entrance, plant flowers and ferns along the walls and shrubbery at the corners, and you will have a gem of a home, one that will command admiration in the most select company.

As this design without screens is hardly complete, we quote the full set:—Verandah screens with double screen doors, front and rear; single screen door for kitchen entry, and screen sash for all windows other than those opening on the verandah—on request.

See terms on page 5 and specifications on page 77.





THE SHERMAN

YOU may search the Thousand Islands or the Hundred Thousand Islands and nowhere find greater value for the money in a summer home.

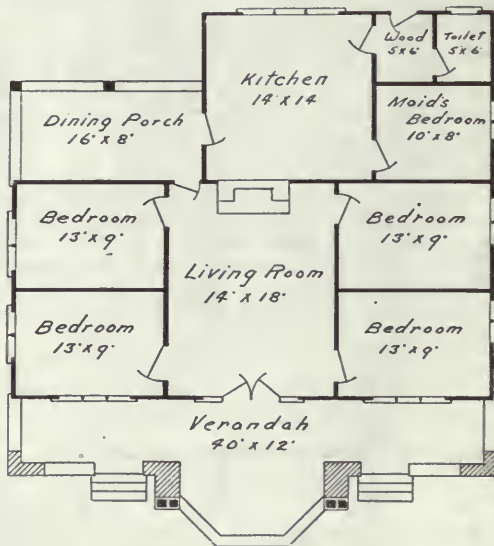
All conveniences and plenty of them. If you will spend your summer indoors, you can at least breathe the air of freedom in this cottage. A living room large enough for a dozen; four sleeping rooms, each large enough for two beds; a dining porch for fine weather or meals served in the living room in inclement weather; a kitchen big enough for a small hotel; servants' quarters, and last but not least, a 40 ft. verandah.

But why say more! It speaks to you in a language of its own, "Welcome! Have a good time! Forget the work-a-day world and play!"

Roof shingle stain not included in price.

QUEBEC.—I could not have gotten the same material in the same condition and built my house for 25% more money.

H. M. DUNN.



FLOOR PLAN

In selecting designs for this catalogue, we have considered very many that had features that would appeal to some or that would be suitable for a different climate than that we live in. Those selected have been or will be approved by thousands.

Yesterday is gone—prices and building conditions may never again be as favorable for you as they are to-day—to-morrow may be too late—to-day is the time to act.

See terms on page 5 and specifications on page 77.





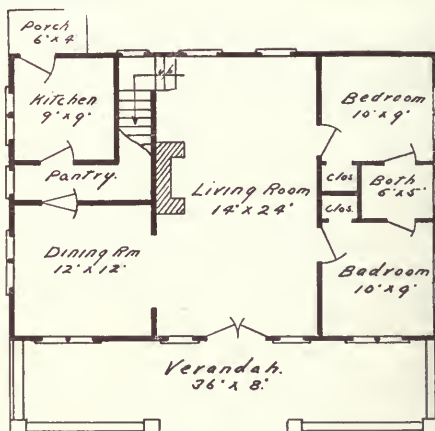
THE CARLETON

THE "Carleton" is a summer bungalow in great demand with discriminating buyers.

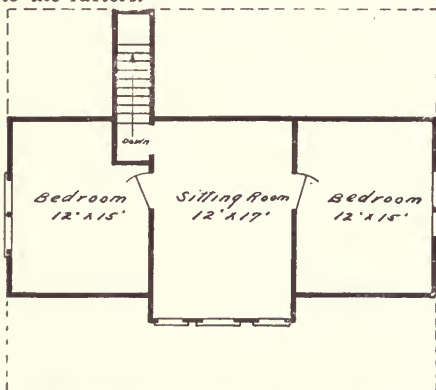
Its deep cool verandah is a vantage point from which to enjoy the ocean, lake or river view when nature smiles, and its many windows, vantage from which to study her in her sterner moods when the God of the storm is abroad on the waters.

The living room, entered through wide double doors, extending 24 ft. from front to rear and 14 ft. in width and furnished with a fireplace, will be the gathering place on cool days and evenings to enjoy music, stories and good cheer.

The ground floor rooms have the smoothly dressed floor joists and flooring of the second floor for the ceiling, but the second floor rooms are open to the rafters.



FIRST FLOOR PLAN



SECOND FLOOR PLAN

With the sound of the surf in the distance or of the rain on the roof or of the wind in the trees, sweet dreams are assured to the lucky owner or his guest.

I would gladly recommend your system to anyone wanting to build a Summer Cottage, as I consider that I saved two or three hundred dollars over what it would have cost me in the ordinary way.

JAMES WOOLINGS.

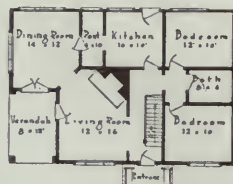
See terms on page 5 and specifications on page 77.



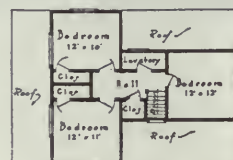
THE KAWARTHA



This bungalow has proven so tremendously in demand the past year not only as offered by us for a winter home, but as a summer cottage, that we are illustrating it here as the latter.



FIRST FLOOR PLAN



SECOND FLOOR PLAN

We quote it furnished with siding and paint for the exterior or with sheathing and lath, ready to receive a stucco finish, at the same price.

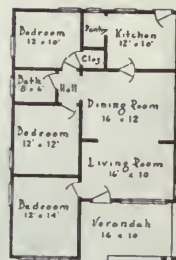
The flooring of the second floor forms the ceiling of the ground floor; the joists being all dressed smooth on all sides makes a finish in keeping with the interior walls and partitions.

THE HEATHDALE



If a thing of beauty is a joy forever, the Heathdale has many pleasant days and years in store for its present and future owners.

While its lines are simple they are graceful and their very simplicity and grace insure your never wearying of them.



FLOOR PLAN

The rooms and verandah being all under the one roof, and that a "cottage" type, it will call for the very minimum expenditure for up-keep.

The verandah can be readily screened in and with sash screens for the windows and all rooms open to the rafters, it will be found cool and airy in the hottest weather, as well as snug and cozy on stormy days.

To appear to the best advantage, it should be placed on ground higher than its approaches.

See terms on page 5 and specifications on page 77.



THE STRATHCONA

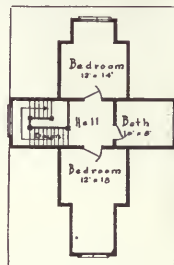


A summer home of the bungalow type with exceedingly handsome roof lines and large front verandah.

The belled main roof and dormer roofs accent the bungalow design and still leave space for two large bedrooms and a bath on the second floor.



FIRST FLOOR PLAN



SECOND FLOOR PLAN

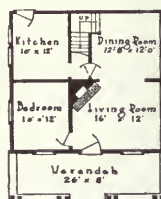
The ground floor space indicated as living room, parlor and reception hall is for summer home purposes practically all one room. If fireplace is desired, it can be placed in any of these three rooms, and if wished, the rear porch can be walled in and included in a rearrangement of the floor space.

THE PICTOU

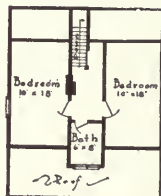


A semi-bungalow of handsome design and capacity for a summer home. The second floor constitutes the ceiling of the four ground floor rooms.

The gable ends, like the first storey walls, are finished with siding, and all interior woodwork is dressed smooth.



FIRST FLOOR PLAN



SECOND FLOOR PLAN

In the design photographed, the fireplace is in the end of the living room instead of as suggested in the floor plan, in the centre of the cottage, an arrangement optional to the owner.

This design will bear setting on comparatively low ground, as its height does not need emphasizing.

See terms on page 5 and specifications on page 77.

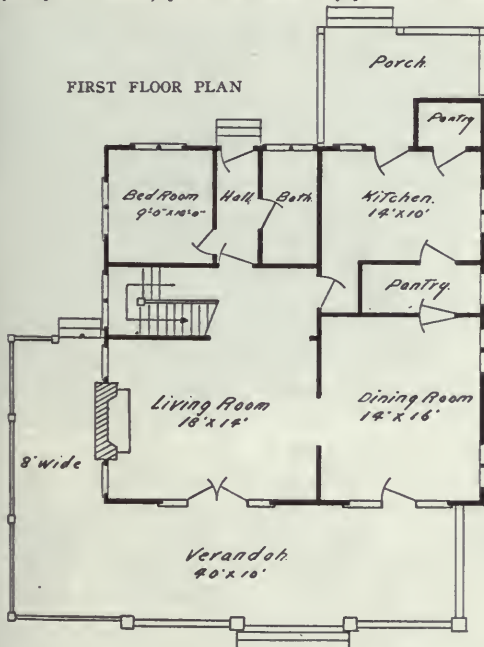


THE LAKESIDE

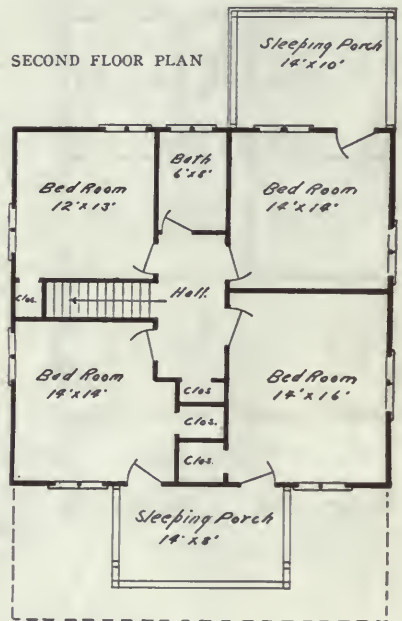
WHEN the little folks are through with school for the year and the need comes to get them nearer to mother earth, where they can develop the physical side of life and store up energy for the coming years, a summer home like "The Lakeside" will make it possible to give them what they need without sacrificing the comforts of city life.

On a stormy day the huge living room with fireplace and verandah and sleeping porches, furnish shelter and protection. Big kitchen and servants' quarters, large dining-room and pantries and six sleeping-rooms with plenty of closets, permit of solid enjoyment the summer through.

FIRST FLOOR PLAN



SECOND FLOOR PLAN

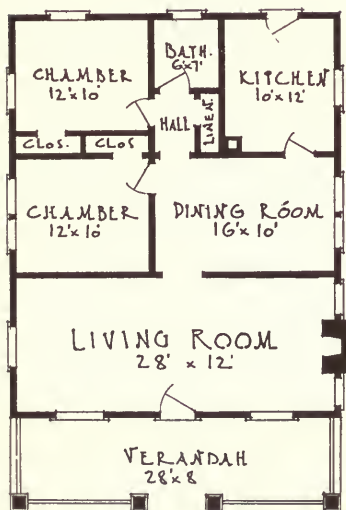


See terms on page 5 and specifications on page 77.





THE SYLVAN



FLOOR PLAN

A SUMMER home that looks like a million dollars, but much easier to obtain.

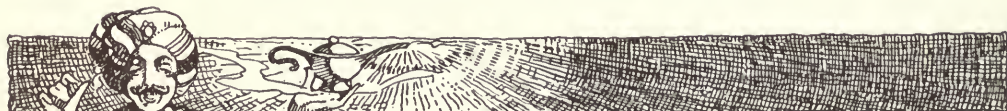
The stone foundation and cellar shown in the illustration are features seldom required in a summer home, but the cottage can be placed on piers or posts quite as well as on a masonry foundation, if a cellar is not required.

The living room is an exceptionally fine symmetrical room, and of course in a summer cottage it and the verandah are the essentials. The sleeping room capacity can be increased by furnishing the living room with a lounge bed and by making with canvas awnings a pair of sleeping porches on the verandah.

Excellent dining room and kitchen, with a bathroom that may be used as a pantry, communicating directly with the kitchen if the bath is not required, making an essentially sensible and convenient floor plan.

The illustration is the same as of the design "Dale," which is quoted as a winter home, but it has proven so popular as a summer cottage that we are offering it here to help meet the great demand for summer cottages at a reasonable price that are comfortable, good-looking summer homes, and not shacks.

See terms on page 5 and specifications on page 77.



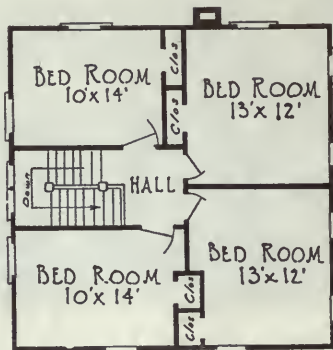


FIRST FLOOR PLAN

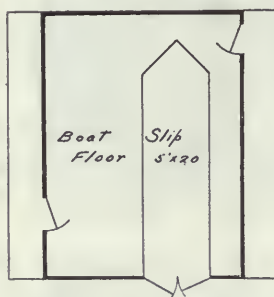
THE PARRY

AN all-summer home for a large family and their guests. If you can get the mate to it, you will care little whether the fish bite throughout the summer or not. Boating, bathing and fishing, long rambles in the woods and a summer home like this to return to at night and the troubles of life will be forgotten.

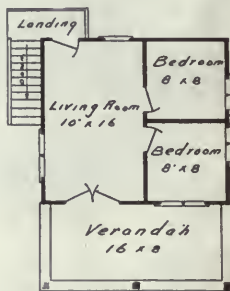
With the verandah screened against uninvited guests, the capacity of the first floor is nearly doubled. The second floor rooms are all open to the roof.



SECOND FLOOR PLAN



FIRST FLOOR PLAN



SECOND FLOOR PLAN

THE CARLING

IALF the pleasure in life is in variety. When city life palls, when the professional man's clients or patients get on his nerves, or the business man is tired in the morning, a location where he can tramp the woods and be on and in the waters of lake or river, gives the needed change. Many, however, do not feel they can invest largely in a play home for two or three months of the year.

This combination of cottage and boat house, will offer a long needed solution at a price within the reach of all.

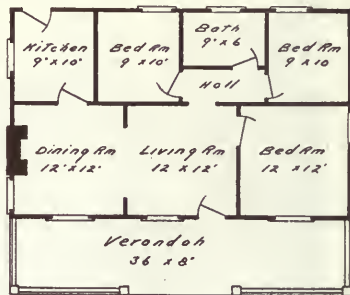
See terms on page 5 and specifications on page 77.





**Simplicity
the
Key-Note**

THE ISLANDER



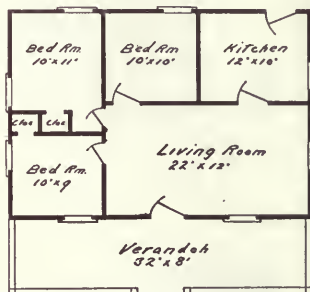
Readi-Cut Six-Room Summer Cottage, with Bath Size 36 x 22
Much the same design as shown on page 22. A fourth bedroom can be furnished without extra cost if a bathroom is not required.



THE TRENT

Readi - Cut Five - Room
Summer Cottage Size 32 x 22

Capable of accom-
modating a good size
family, and week-end
guests. Cosy; Staunch;
Dry.



THE SO-HOMEY

Readi - Cut Three - Room
Summer Cottage Size 20 x 16

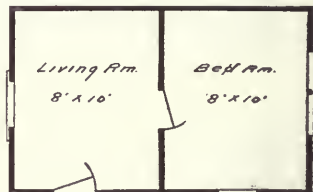
A summer kitchen can
be added at slight cost to
increase the capacity.



THE ANTLER

Readi-Cut Two-Room Summer Cottage Sizes 16 x 14, 24 x 12
Suitable for two cottagers, "camper style," or for
use as a hunting or fishing lodge.

See terms on page 5 and specifications on page 77.



SCREEN DOORS, SCREEN SASH AND VERANDAH SCREENS

Our screens are all made from heavy stock; the wire netting is tightly stretched over the frame, securely fastened in place, and the edge covered with a neat half-round strip. In a house fitted with a set of our screens the problem of keeping out flies and mosquitoes is settled for a term of from ten to twenty years. These screens should not be confused with those cheap affairs which have to be renewed, if not every season, at least once in three years.

We will quote on application on a complete set of door, window or verandah screens for any house in our Catalogue. The price will in each case include all necessary hardware.

STORM SASH AND STORM DOORS

Storm doors are fitted with a light of glass. Storm sash are one and three-eighths inches thick and are of the best quality and workmanship. We supply these sash either with a lower-rail ventilator, or with patented hangers so that the sash can be opened outward. The latter type has the advantage that they are more easily put on from the inside of the house. In the case of a bungalow where all the windows are on the first floor, we would recommend the lower-rail ventilator.

Ask for a price on storm doors and sash complete for the house in which you are interested.

BASEMENT WINDOWS, BASEMENT DOOR AND BASEMENT STAIRS

Basement windows are not included in the houses at the prices quoted. Basement door and stairs are only included in the houses, at the price quoted, when they are indicated in the floor plan, as many of our houses are built either temporarily or permanently on post foundations, and as the item of basement windows is one that varies considerably with the needs of the owner, we have found it more convenient to have a separate price list of these fittings.

SLIDING DOORS AND MIRROR DOORS

An extra charge is made where an archway is replaced with a pair of sliding doors.

A panel door fitted one side with a four-foot plate mirror will be supplied in place of any closet door for a slight additional cost.

DOUBLE SWING DOOR

This door is included in the house at the price quoted wherever it is indicated on the floor plan, and will be put in to replace any single swing door, in any design, for an extra charge of \$1.95 net.

SHINGLE STAIN

Shingle stain for the roof is not included, but will be supplied in any desired quantity at cost. A gallon will cover 150 square feet of roof surface, brush coat.

HARDWOOD FLOORS

Hardwood floors of a fine quality of birch or maple, will be furnished in place of the regular flooring specified, with any of our designs, at a slight additional cost.



ADDITIONS TO ALADDIN HOUSES

DESIGNED FOR USE ON ANY HOUSE

To make the designs illustrated more flexible, we are prepared to furnish an assortment of lean-to Additions, which are attached to the rear of our houses, increasing the ground floor space, so that other use can be made of the space shown on the Floor Plan. The exterior finish of these Additions will be furnished to harmonize with the appearance of your house without extra cost.

The buildings are furnished both in "summer" and in "all-the-year-round" construction.



ADDITION No. 1

Additional No. 1 can be used as a Kitchen with Pantry, or as an extra Bedroom, as desired, or will be very well adapted for an Entryway, with either Pantry or Bath. In one-storey houses in which no allowance is made for a basement stairs, a happy solution of the difficulty is to place it in an Addition where it is convenient both to the Kitchen and to the outside. Quoted in various sizes. See Price List.

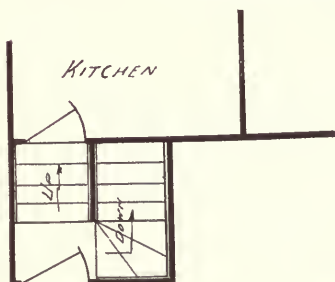


ADDITION No. 2

Addition No. 2 has an enclosed part which is suitable for a Pantry or Bath, and has an open Porch. In the Price List we quote it in three sizes, divided as noted below:

Size	Enclosed Part	Porch
6 x 14	6 x 8	6 x 6
8 x 16	9 x 8	7 x 8
10 x 18	10 x 10	10 x 9

ALADDIN "READI-CUT" CELLAR ENTRANCE



The accompanying cut illustrates how an enclosed outside cellar entrance can be provided for any of our houses. Many customers prefer to have access to the cellar without the necessity of going through the house, and still do not want to be compelled to go out into the open air to get to the cellar. To such, this attachment will appeal strongly. Price, complete with basement stairs and door, quoted in Price List.

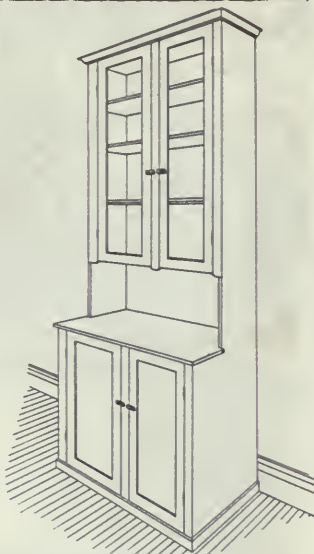
See terms on page 5 and specifications on pages 11 to 13.



ALADDIN KITCHEN CABINETS AND MEDICINE CABINET

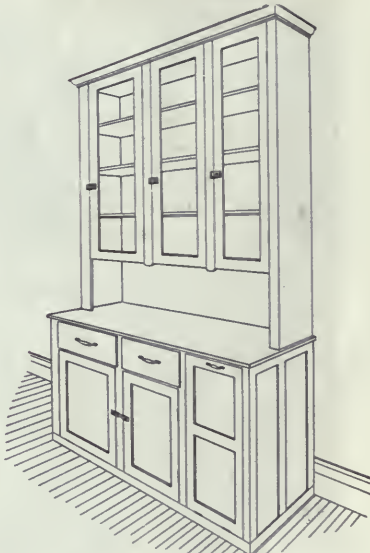
THE Cabinets illustrated below are not shipped in the knock-down, but are put together in our shops and delivered ready to be put in service, with the exception of the glass and the hardware, which, for the sake of safety in transit, are packed and shipped separately. They are made in both Georgia and white pine, but we strongly recommend the Georgia pine, as it will take an oil finish and has a particularly handsome appearance.

No. 1 KITCHEN CABINET is 4 ft. wide, 7 ft. high, and 1 ft. 6 in. deep. It has a shelf and two panel doors below, and four shelves with two glass doors above. In Georgia pine or white pine, complete with glass and hardware.



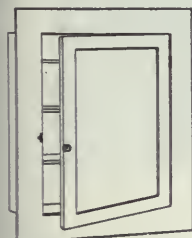
No. 1 KITCHEN CABINET

No. 2 KITCHEN CABINET is the same as No. 1, except that it is 5 ft. 6 in. wide and has three panel doors below and three glass doors above. In Georgia pine or white pine, complete with glass and hardware.



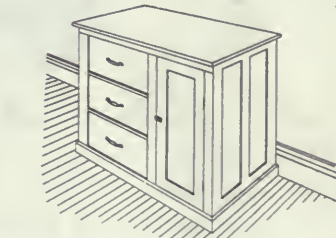
No. 3 KITCHEN CABINET

No. 3 KITCHEN CABINET is 5 ft. 6 in. wide, 7 ft. high, and 1 ft. 6 in. deep. It has in the lower section one shelf with two panel doors, a tilting flour bin, and two cutlery drawers. In the upper section there are four shelves with three glass doors. In Georgia pine or white pine, complete with glass and hardware.



MEDICINE CABINET

No. 4 KITCHEN CABINET OR CLOSET CHESSET is 3 ft. 6 in. wide, 3 ft. high, and 1 ft. 6 in. deep. It has one shelf with panel door and three large drawers. In Georgia pine or white pine, complete with hardware.



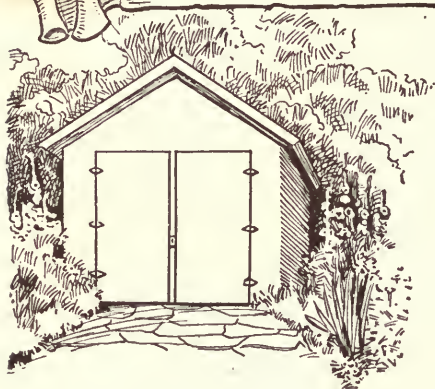
No. 4 KITCHEN CABINET OR CLOSET CHEST

MEDICINE CABINET.—This Sanitary Inset Medicine Cabinet is designed to be built into the partition of the bathroom or of a bedroom. The inside dimensions are:—Width, 1 ft. 4 in.; height, 1 ft. 9 in.; depth, 4 in. It is fitted with three shelves and a mirror door. In Georgia pine or white pine, complete with mirror and hardware.

For prices and terms, see price list.



ALADDIN GARAGES



THE FORD

Sizes 8 ft. x 14 ft. or 10 ft. x 16 ft.

Aladdin garages are strongly built of the same high grades of material entering into the construction of our dwellings. They can be shipped very promptly, are simply and easily erected. The price includes all material and paints of colors to match your house. All garages admit car with top up. There are no floors included, as practically all auto owners prefer to build floors of concrete or cinders.

The Ford Garage illustrated on this page is made in two standard sizes, the 8 ft. x 14 ft. being designed for Ford cars. It is just large enough to admit a Ford touring car with the top either up or down. The 10 ft. x 16 ft. size will admit a car of 110 in. wheel base.



THE OVERLAND

Sizes 10 ft. x 16 ft. or 12 ft. x 18 ft.

A garage with sided walls that can be painted to nicely match any house. The shingled roof has a closed cornice. The large lights of the panelled doors and a casement window in the rear wall give ample light.

For prices and terms, see price list.





THE FRANKLIN

Size 20 ft. x 20 ft.

"The Franklin" is a two car garage of distinction and attractive appearance. It is roomy enough to house two large cars and is well lighted from three sliding sash windows and the lights of the double doors. There is an entry door in the rear of the building.



THE PACKARD

Size 16 ft. x 20 ft.

The broken lines of "The Packard" give it an individuality immediately apparent. It will take the largest car on the market with plenty of room for a work bench and space to work about the car. It has a pair of double panel doors, each with six lights of glass, two casement windows and a rear panelled door.

For prices and terms, see price list.





THE HUDSON

Size 12 ft. x 20 ft.

"The Hudson" will do credit to any surroundings. It is furnished with siding on the lower half of the wall and shingles above. Wide eaves set off the building. This garage has one sliding sash window and a rear door.



For prices and terms, see price list.





JUST FACTS

If you have read the opening pages of this book, you will have gathered the following facts about "Aladdin Houses:"

When erected they are exactly like any other well designed and constructed houses.

A saw is practically unnecessary in the erection of them; we do the measuring, sawing, and fitting in our Mills by automatic machinery.

They will last for several generations—as long as any other well designed and constructed houses. They eliminate waste of material.

They render skilled labor unnecessary, and reduce by half the time required for their erection. You pay but one profit on them.

You know in advance what your complete house will cost and what it will look like.

You save much time and worry in getting a home.

You can do all the work of erecting, yourself, for we furnish full instructions and graphic illustrations.

You get a fine grade of finished material for the entire house, at less than the cost of the raw material otherwise.

That the Aladdin System saves you one-third your money as shown by the experience of others.

ALADDIN PRESTIGE IS FOUNDED UPON REASON

The system is simply exact Science applied to house building.

Scientific elimination of waste.

Scientific utilization of every inch in the log.

Scientific salesmanship to eliminate unnecessary profits to useless middlemen.

Scientific management—planning the most direct route between the raw material and the consumer.

Not in any sense "Magic," just efficiency obtained by specializing.

We eliminate cost that adds no value.

A HOME AS AN INVESTMENT

Every day the necessities of life are going up in price.

Every day we find that a dollar will buy less of some item of food, clothing or labor than it would yesterday.

We say the cost of living is going up.

The financier says that the value of the dollar is going down—that gold is depreciating.

Most of us know it as a condition to be faced and are not particular as to the terms in which the difficulty is stated.

WE KNOW that a dollar invested in flour, sugar, or cold storage eggs, will soon be two dollars, as these values are rising rocket-like.

We know that a dollar in gold will shortly be fifty cents, when measured by its purchasing power.

It would seem that a man could be guilty of no greater folly at the present time than to hoard gold.

That a Bank Balance converted into Real Property is money transferred from a falling to a rising market.

And of all Real Property a Home is most to be commended.

It both saves and earns for you while housing your family.



Great Lakes Engineering Works

Shipbuilders and Engineers
Detroit, Michigan

H W H O Y T
PRESIDENT & TREASURER

January 30, 1919.

Canadian Aladdin Company,
C. P. R. Building
Toronto, Ont.

Gentlemen:

I wish you to know how much my daughter and her family have enjoyed the cottage which I purchased from you in the spring of 1917. I can best perfectly describe it in the language of the street as being "a bird." The material in this cottage, as well as the design, was most satisfactory in all particulars.

I wish you continued prosperity in the business.

Yours very truly,

H. W. Hoyt

HWH:M

INDEX TO DESIGNS

	PAGE		PAGE
Acton VII	38	Jack-on	26
Albany	19	Jeannette VII	21
Albion	24		
Arden	88	Kawartha	83
Aym IX	51	Kentucky X	74
Beruda	78	Lakeside	85
Brunswick	69	Lancaster	41
Burleside	32	Lockwood	20
		Lynn	37
Carling	87		
Carleton	82	Manor	66
Cedars	72	Massachusetts	22
Champion VI	31	Model X	33
Cleveland	45	Moncton VI	57
Croft VI	23		
		Ottawa VII	71
Dale	28	Oxford	34
Denver	54		
Devon	24	Fairy	87
Dixie	57	Pictou	84
Dorval	18	Preston IX	27
Eastbourne	79	Redcliff	24
Eden IX	70	Richelieu	75
Edmonton	30	Ridgeland VI	65
Elko X	35	Roseland	62
Elmwood	73		
Erskine	68	Sharnot	78
		Sheridan	81
Fairfield X	53	So-Honey	68
Fairport	91	Sovereign IX	42
		Stratford X	27
Gem	78	Strathcona	84
Geneva VI	52	Suburban	40
Gladstone X	64	Sudbury VI	45
Glencoe X	57	Sylvan	86
Glenora	24		
Glenside	63	Tacoma IX	48
Grange	31	Towanda	36
		Tottenham	24
Heathdale	83	Trent	38
Hewitt	78		
Holmwood IX	67	Victoria	43
Homestake	55	Villa VI	24
Homestead	47		
		Wagon	44
Wander	88	Whitby	70
Wheat X	5		



