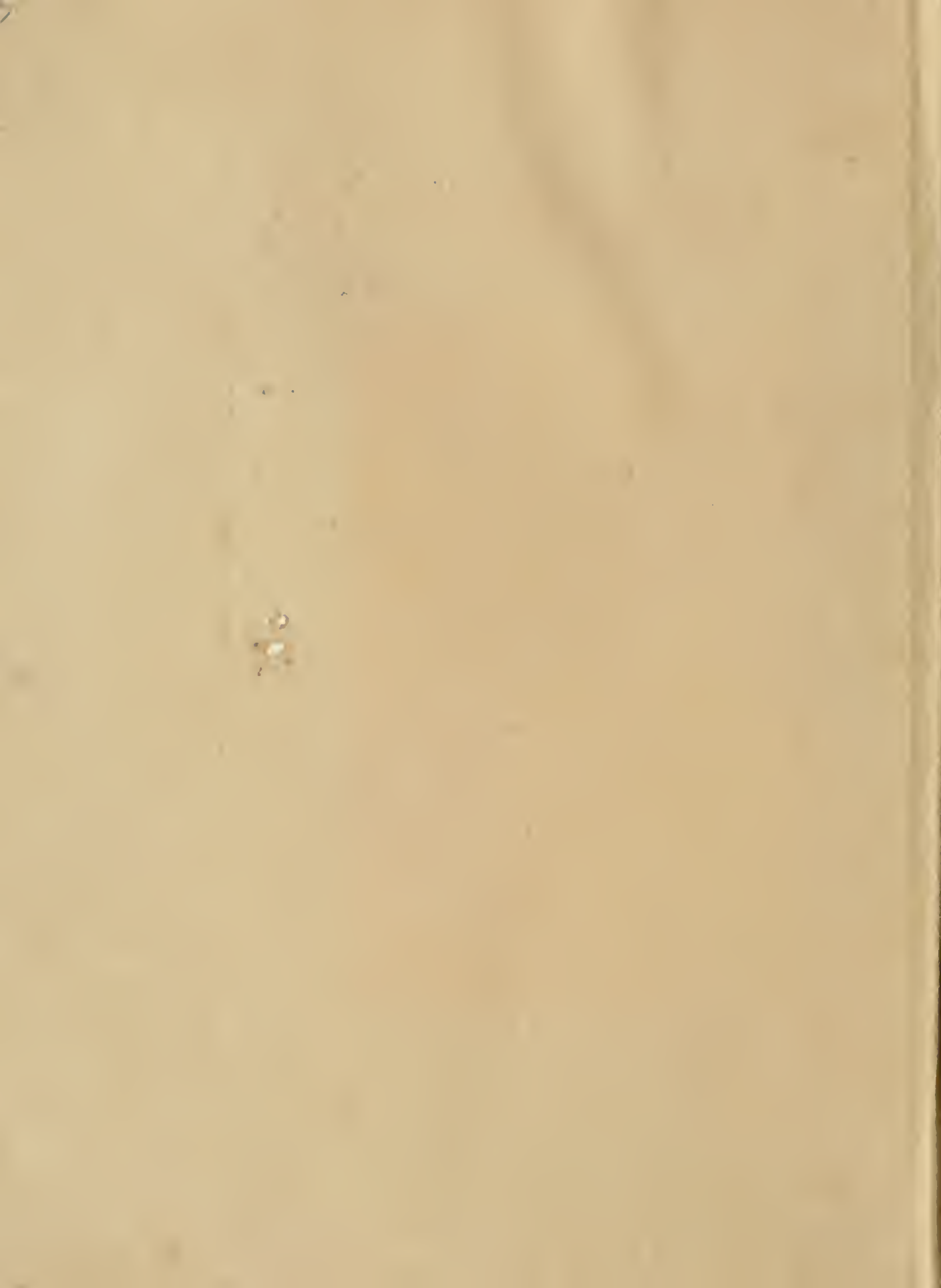
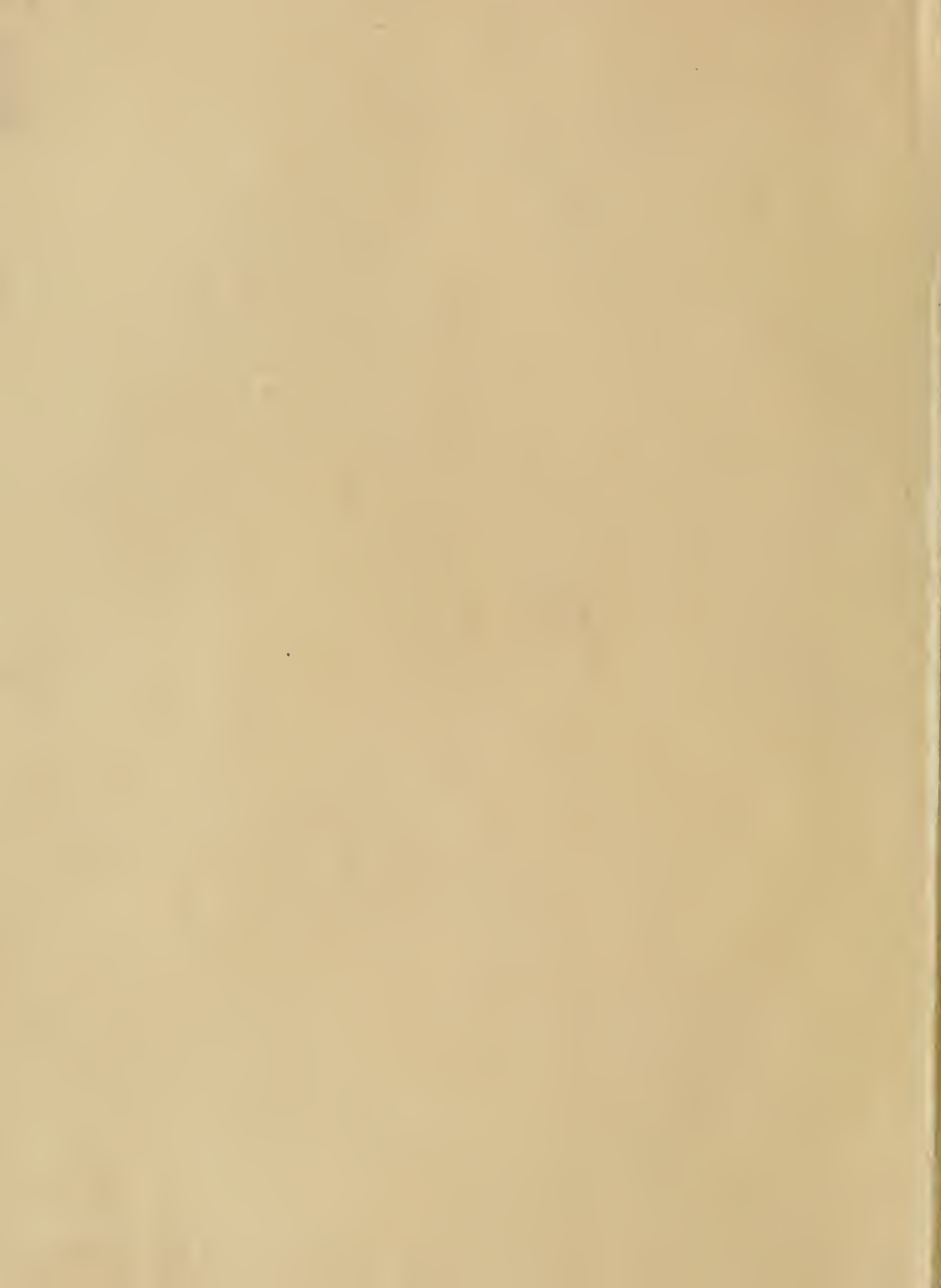


ARCHITECTURAL
BRONZE AND IRON
WORKS, TORONTO



CANADIAN ALLIS-CHALMERS
LIMITED

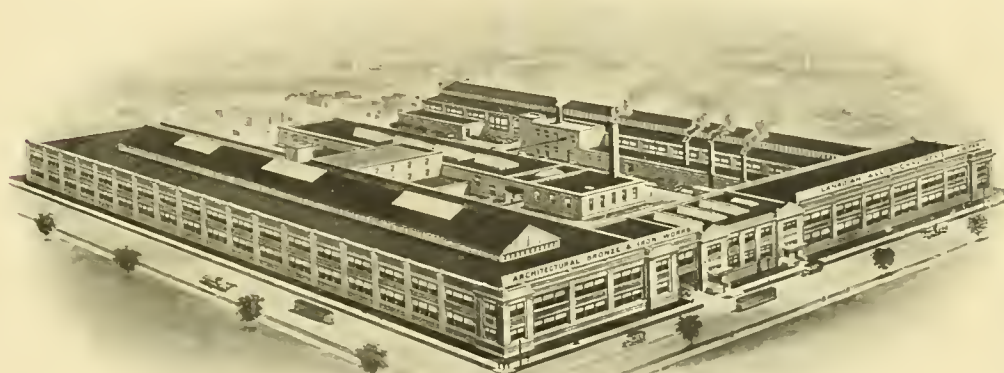




ARCHITECTURAL BRONZE · AND · IRON

BULLETIN 2000

DECEMBER, 1913



HEAD OFFICE AND PLANT
ARCHITECTURAL BRONZE AND IRON WORKS

LANSDOWNE AND ROYCE AVENUES, TORONTO

CANADIAN ALLIS-CHALMERS, LIMITED

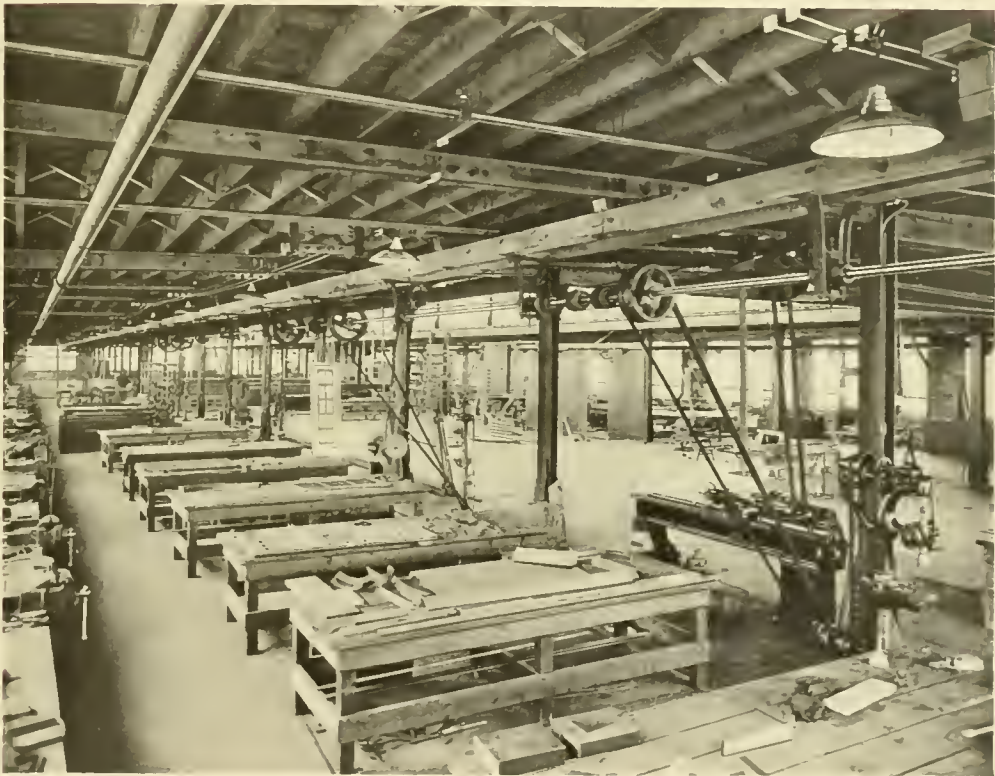
Copyright, Canada, 1913
by
Canadian Allis-Chalmers, Limited

Our Facilities

For the Manufacture of

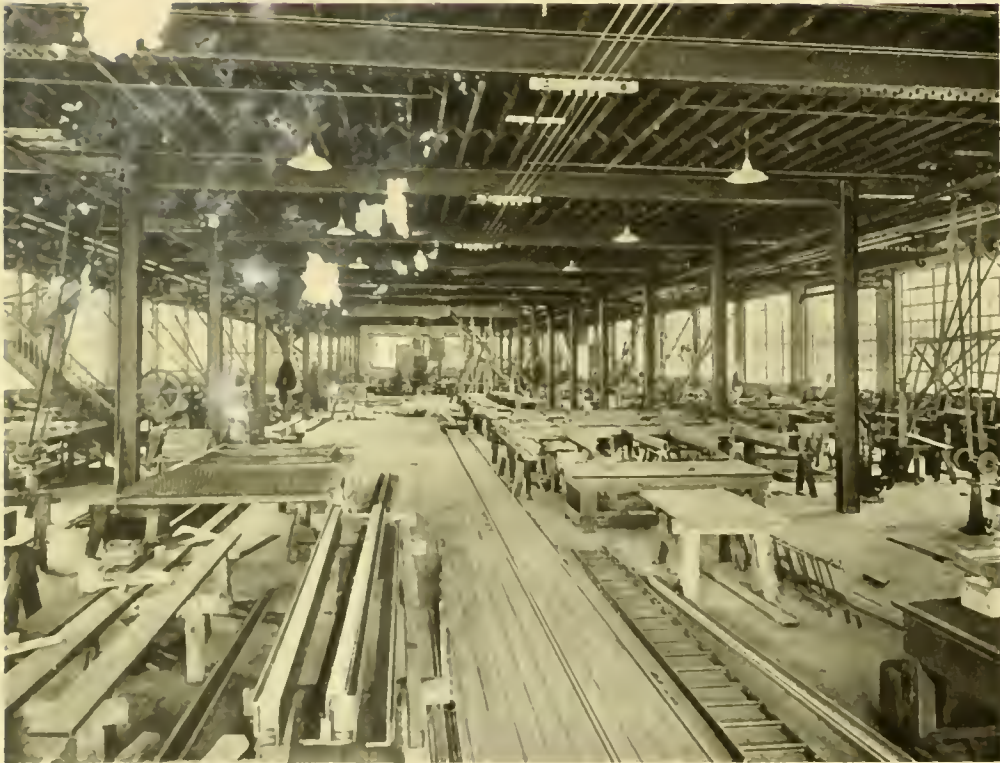
Architectural Bronze and Iron

THE BRONZE FITTING SHOP



THE Ornamental Iron Department of the Canada Foundry Co., Limited, was established in 1901 by the purchase of the business of the Toronto Fence & Ornamental Iron Works, occupying a plant in Queen St. East. In 1903 the Department was moved to the plant at King St. Subway where it remained until the fall of 1912, when it was again moved into the present new plant at Lansdowne and Royce Aves.

IRON FITTING SHOP



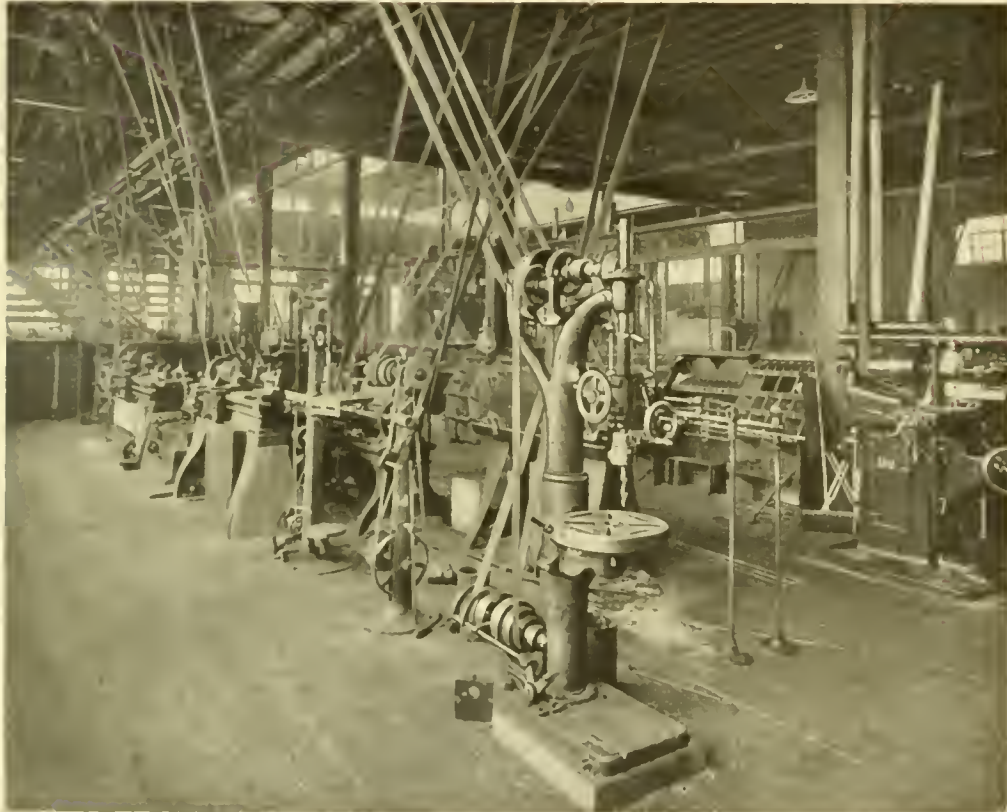
We beg to announce that these works will henceforth be operated under the control of Canadian Allis-Chalmers, Limited, and will be known as "Architectural Bronze & Iron Works, Toronto." The business will be carried on as distinctly separate as possible, so that Architects and Contractors should be able to obtain a closer connection with our especial production and avoid possibility of confusion with other branches of the parent Company. The Architectural Bronze & Iron Works will be represented in all the district offices of Canadian Allis-Chalmers, Limited, so that direct communication may be obtained by customers as quickly as possible, with competent Agents.

THE IRON FOR OR



The development of the use of Ornamental Iron and Bronze in the buildings of Canada in recent years has kept pace with the great progress in the buildings themselves. In no other way has the advancement of this Country been so remarkably demonstrated, as in the Architectural monuments which have been erected in every City from Halifax to Victoria. Perhaps in no other Country has advancement in industry, trade, culture and the arts been so general throughout the entire land. There is in the West as much appreciation and demand for the best in everything as in the East. This is particularly evident in the public buildings which in Vancouver, Victoria, Calgary, Edmonton, Saskatoon, Regina and Winnipeg, stand the closest comparison with those in the Cities of the East.

A CORNER IN THE TOOL ROOM



In the earlier years there were so few of the higher class of buildings being erected in Canada that there was no inducement to manufacture such portions as Ornamental Iron and Bronze, so that it was necessary to import practically all of it. This Company has endeavored to meet the demands of the best architects by building up a manufacturing plant to produce the highest quality of both bronze and iron as applied to decorative architectural treatment. That this has been a long and serious task is easy to imagine when it is understood that our chief competitors have been American concerns of long experience and established reputation and that skilled labor for the various branches of the work has been most difficult to obtain. The measure of our success can be ascertained by consulting the list of the buildings in which we have installed our work and of the Architects under whom the work has been produced

THE PLATING SHOP



We would call attention to the proportion of the work we have done in the past six years to all the important work done in Canada during that period. The volume of business increased at least four-fold up to the time when we vacated the old Subway Works. Our buildings and equipment there were added to from time to time until we could go no farther, as we were surrounded on all sides by the railroads and were unable to obtain more ground on which to build. In the beginning of 1912 it was decided that nothing should prevent us from keeping up with the general development of the Country, and the Manager of our Ornamental Iron Works was authorized to have plans prepared for an entirely new plant to be built on the most modern lines and to be equipped with the latest and best machinery obtainable, with the result that we are now established in a plant which we believe to be second to none of its kind on this Continent.

PART OF THE STOCK ROOM



Our new shops have a capacity equal to double that of the old plant and we have room enough for extensions to make it three times what it formerly was. We take pleasure in inviting Architects, Contractors and those interested in Ornamental Iron and Bronze Work to visit us and see the work we do and the processes involved in producing it. Our works are entirely self-contained for our especial production. From the office and estimating staff to the draughting room, the pattern shops and modelling room, the iron foundry, the bronze foundry, the fitting shops for iron and bronze, the plating plant, the blacksmith and grille shops, every department is as complete as possible. We are connected with the Grand Trunk and Canadian Pacific Railroads and thus have the best of shipping facilities.

And while we have been concentrating our best efforts on the production of high-class ornamental iron and bronze we have no intention of neglecting any of those lines of work which are generally included in Ornamental Iron Specifications, such as plain stairs, fire escapes, fences and gates, grills of all kinds, street lamps and special standards, sidewalk lights, sidewalk doors, area work, etc.

ILLUSTRATIONS
of RECENT WORK



Bank of Toronto,
Head Office

Bronze Dome and Railings

Carrere & Hastings and E. G. Bird,
Architects



Detail of Bronze Railing

Bank of Toronto,
Head Office

Carrere & Hastings and E. G. Bird,
Architects



Detail of Bronze Railing

Bank of Toronto,
Head Office

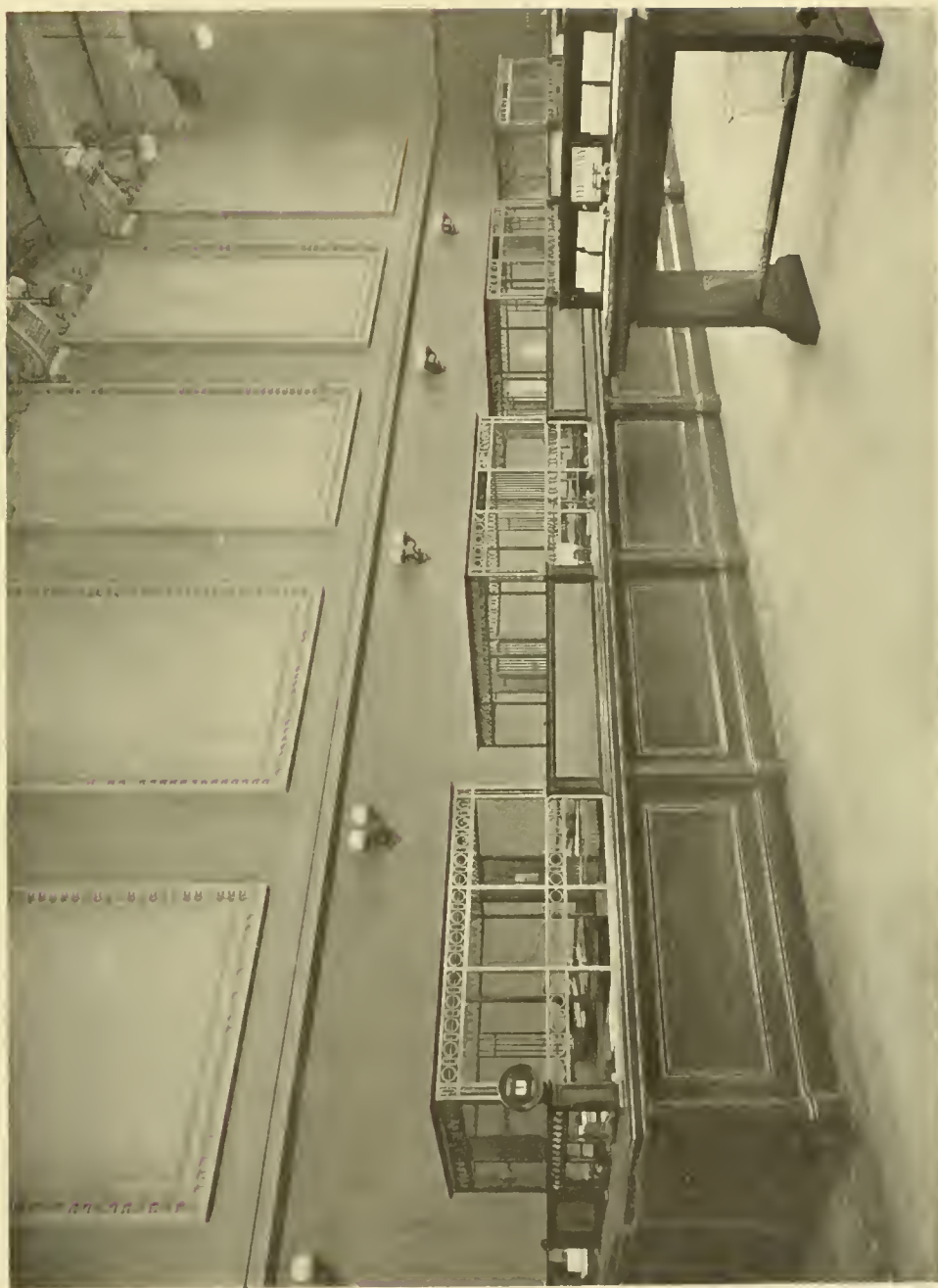
Carrere & Hastings and E. G. Bird,
Architects



Bank of Hamilton,
Head Office

Bronze Railings

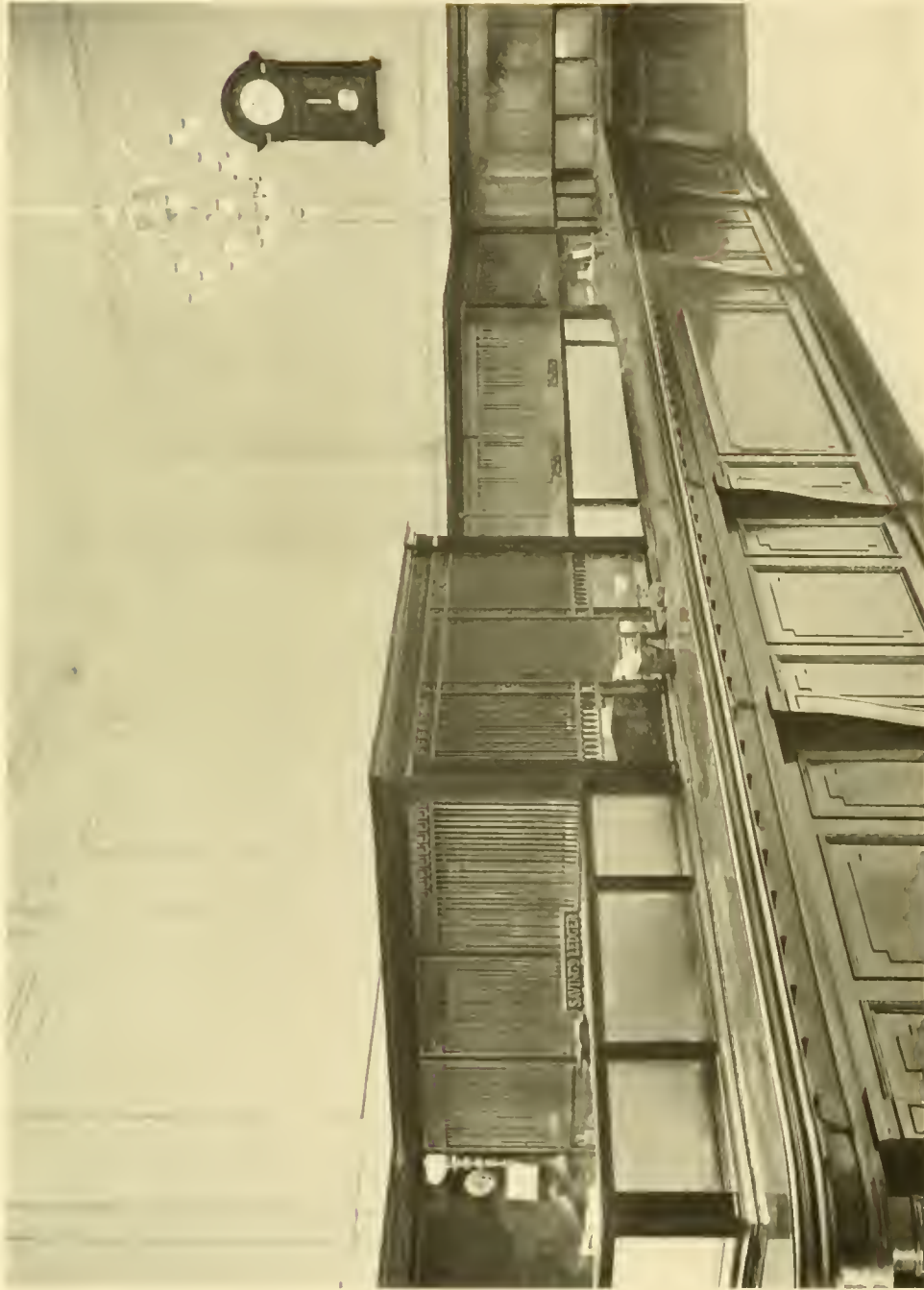
Mills & Hutton,
Architects



Canadian Bank of Commerce,
Vancouver

Bronze Counter Railings

Darling & Pearson,
Architects



Curry & Sparling,
Architects

Bronze Railings

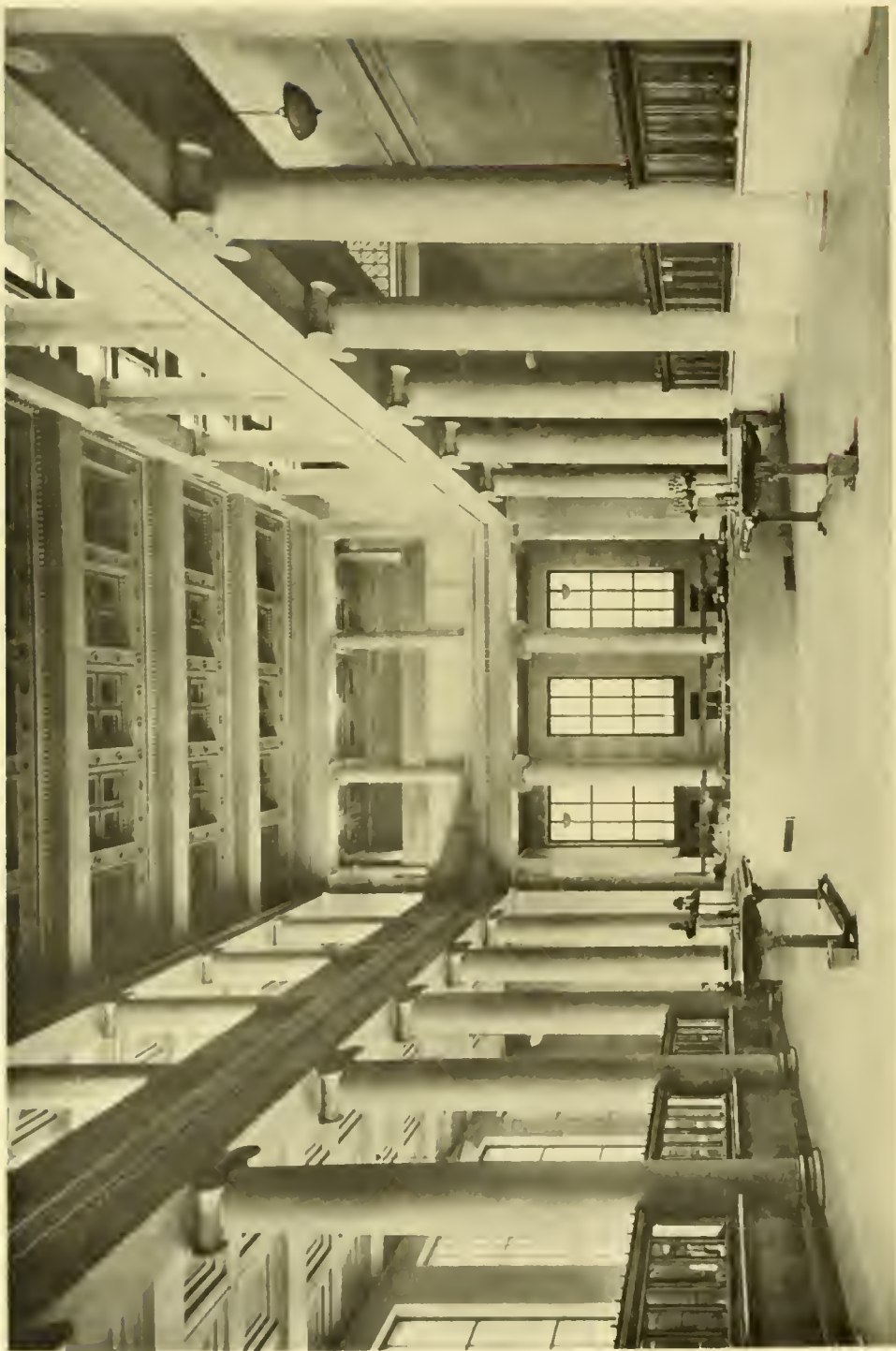
Quebec Bank,
Toronto



Bank of Toronto,
Queen St. East, Toronto

Bronze Railings and Cages

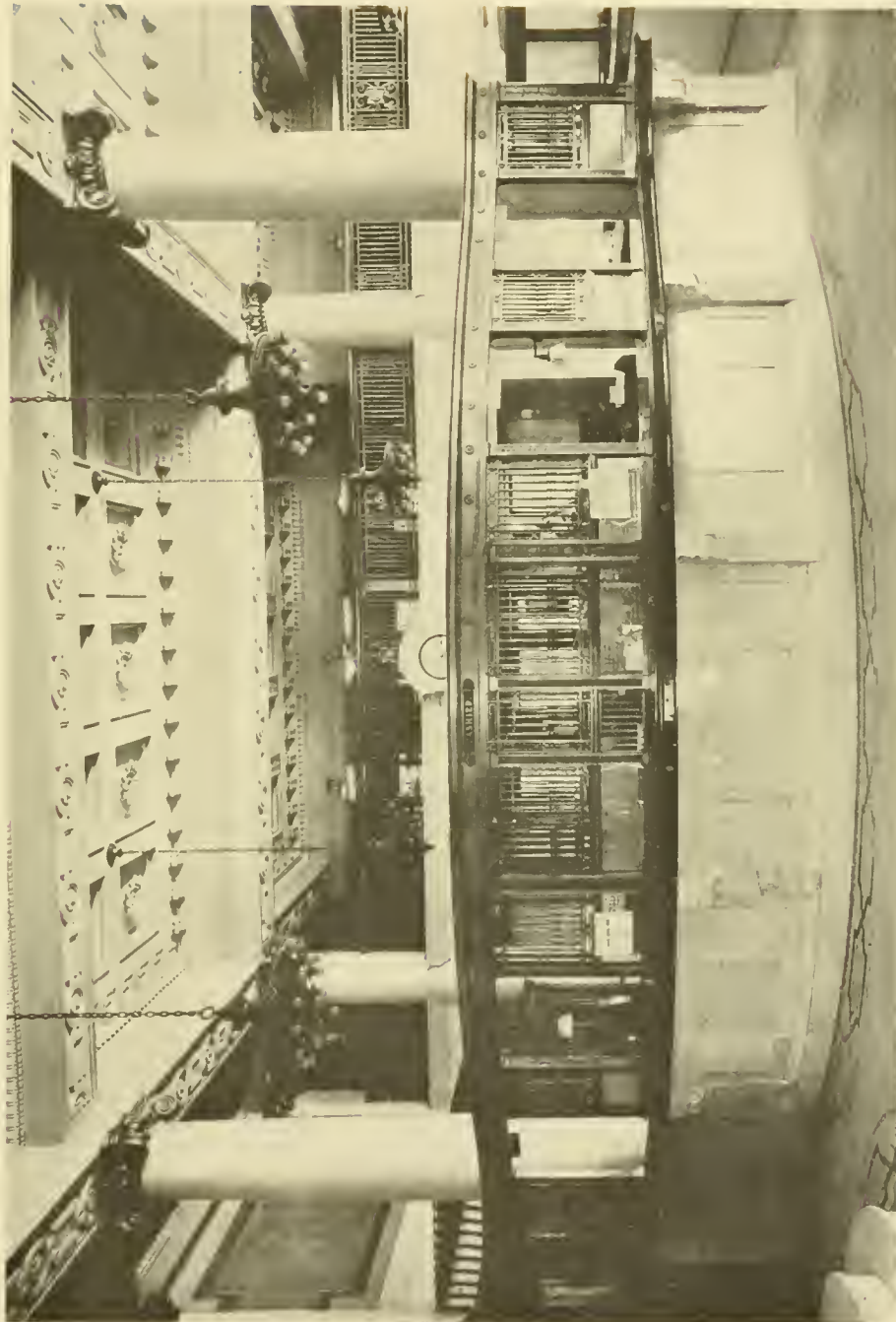
Chapman & McGiffin,
Architects



McKim, Meade & White,
Architects

Bronze Counter Railings and Tables

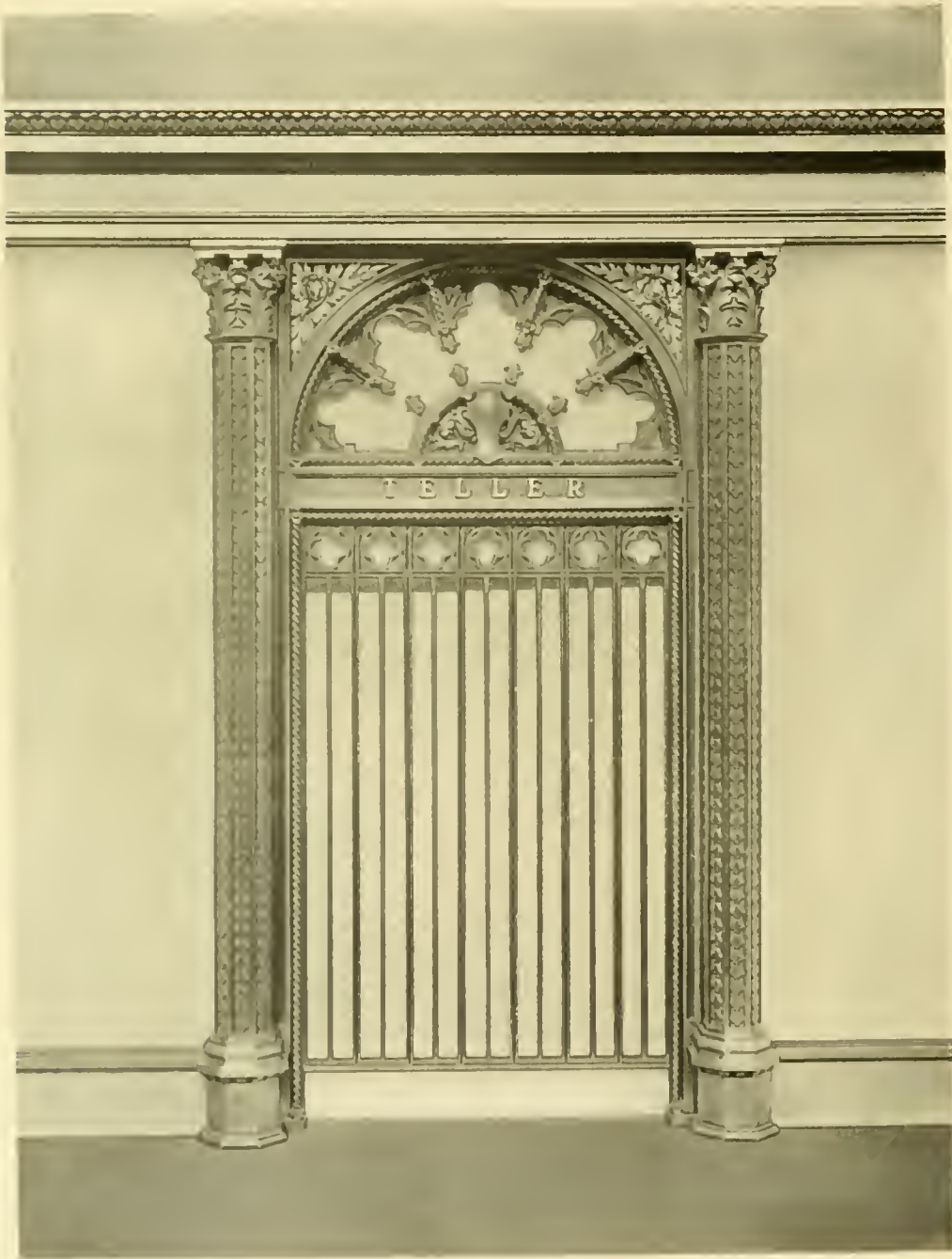
Interior Bank of Montreal,
Winnipeg



Bronze Railings

Toronto General Trusts Corporation,
Toronto

G. M. Miller,
Architect



Wicket in Bronze Counter Railing

Winnipeg Electric Ry. Chambers,
Winnipeg

C. S. Frost and Pratt & Ross,
Architects



Bronze Stair and Gallery Railings

Ryrie Bros., Limited,
Toronto

Burke, Herwood & White,
Architects



Ontario Club,
Toronto

Bronze Stair Railing and Newel

Sproatt & Rolph,
Architects



B.C. Electric Railway,
Vancouver

Cast Iron Stairs

Somervell & Putnam,
Architects



Grand Trunk Station,
Ottawa

Cast Iron Fire Dogs

Ross & MacFarlane,
Architects



Chateau Laurier,
Ottawa

Cast Iron Stair Railing

Ross & MacFarlane,
Architects



Union Station,
Winnipeg

Cast Iron and Steel Stairs

Warren & Wetmore,
Architects



Cast Iron Stairs and Dome

Transportation Building,
Montreal

Carrere & Hastings and E. G. Bird,
Architects



Cast Iron Stairs

Transportation Building,
Montreal

Carrere & Hastings and E. G. Bird,
Architects



J. Wilson Gray,
Architect

Cast Iron Railing and Stairs

Heintzman & Co., Limited,
Toronto



Cast Iron Railing and Stairs

Heintzman & Co., Limited,
Toronto

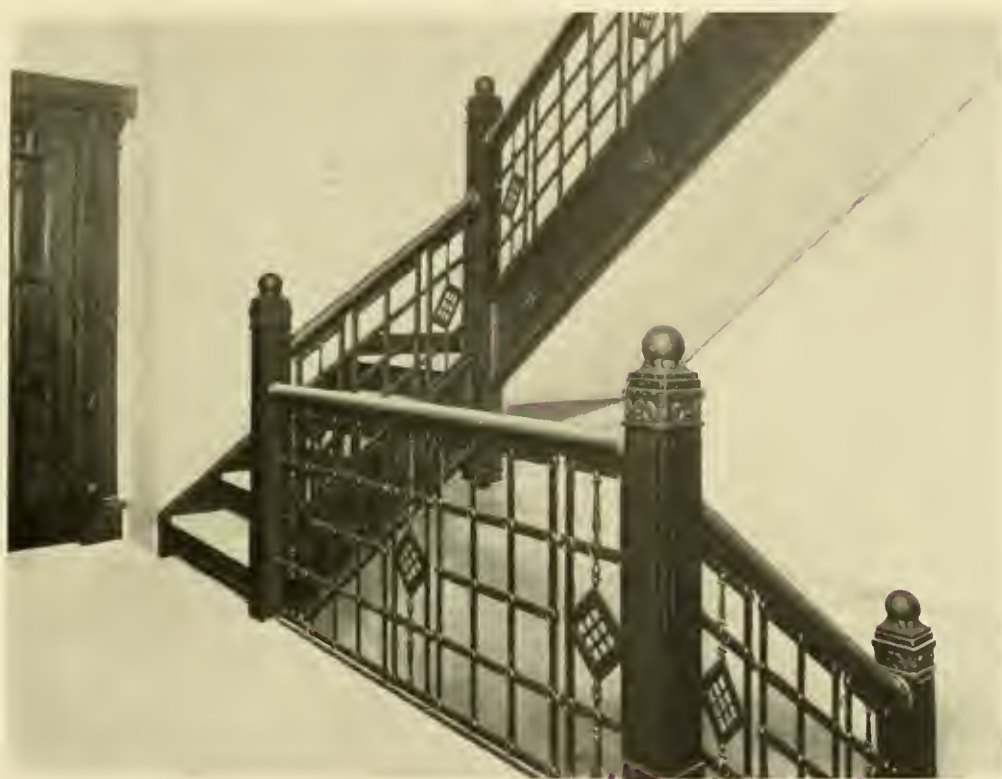
J. Wilson Gray,
Architect



Registry Office,
Hamilton

Cast Iron Stairs and Railing

Stewart McPhee,
Architect



Fort Garry Hotel,
Winnipeg

Cast Iron Stairs and Railing

Ross & Macdonald,
Architects



Merchants Bank,
Vancouver

Bronze Entrance and Letters

Somervell & Putnam,
Architects



Bronze Entrance Doors

Canadian Bank of Commerce,
Vancouver

Darling & Pearson,
Architects



Bronze Entrance

Winnipeg Electric Ry. Chambers,
Winnipeg

C. S. Frost and Pratt & Ross,
Architects



Winnipeg Electric Ry. Chambers,
Winnipeg

Bronze Doors

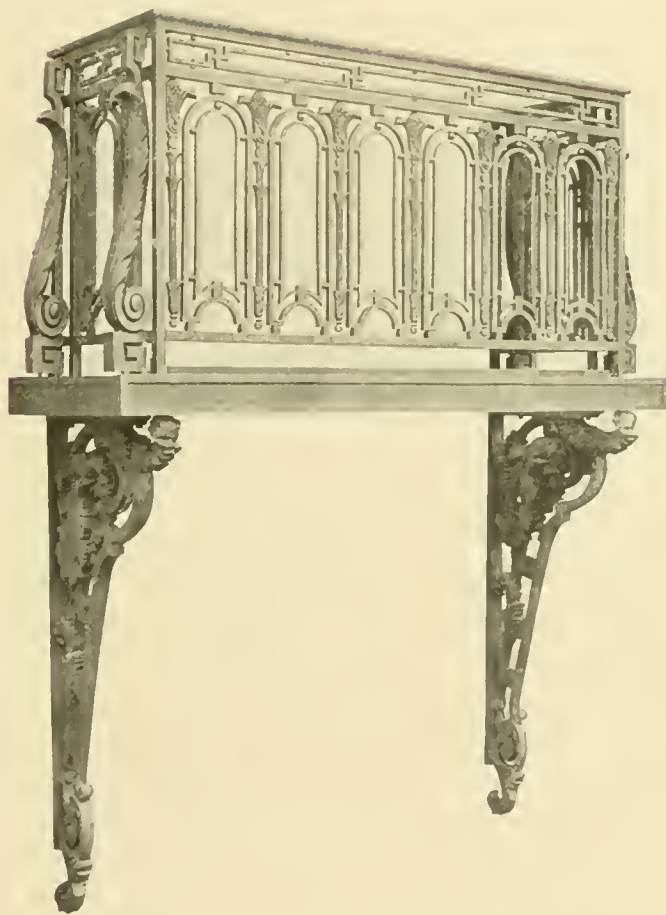
C. S. Frost and Pratt & Ross,
Architects



Great West Life Bldg.,
Winnipeg

Bronze Entrance

J. D. Atchison & Co.,
Architects



Cast Iron Balcony

C.P.R. Hotel,
Calgary

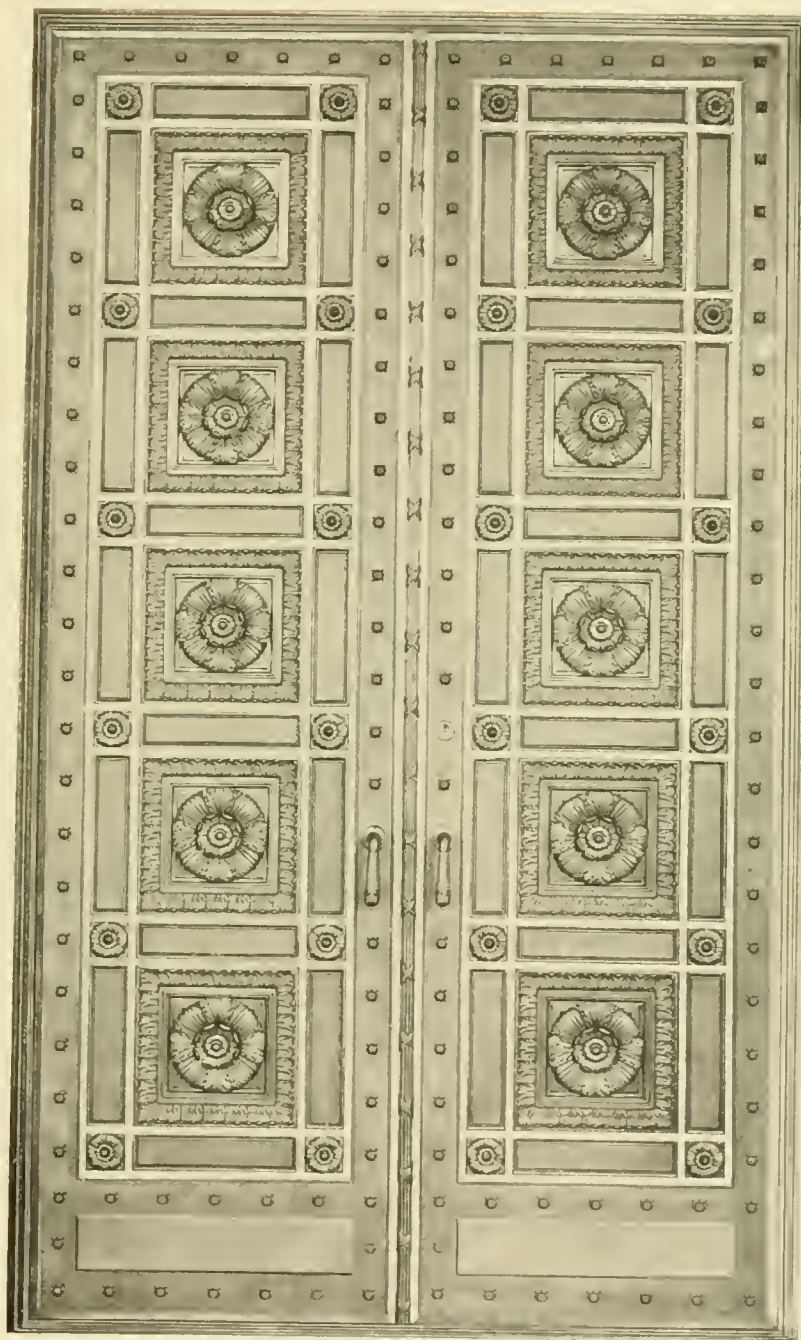
Edward and W. S. Maxwell,
Architects



Residence of J. C. Eaton,
Toronto

Bronze Entrance Door

Wickson & Gregg,
Architects



Bronze Doors

Royal Bank,
Winnipeg

Carrere & Hastings and E. G. Bird,
Architects



Branch Post Office
Montreal

Bronze Entrance

Joseph Perrault,
Architect



Court House,
Brantford

Cast and Wrought Iron Entrance

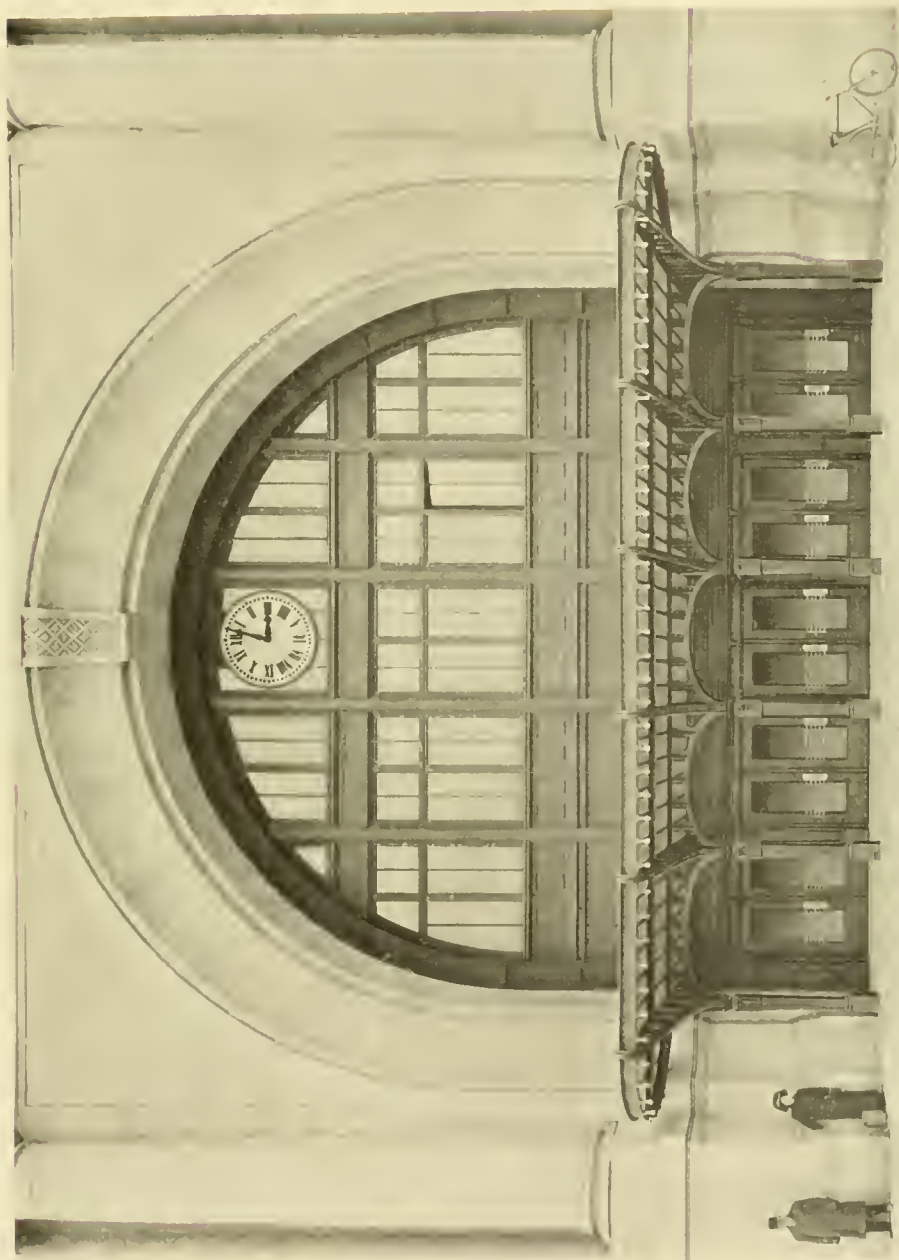
Taylor & Taylor,
Architects



Union Station,
Winnipeg

Dining Room Entrance

Warren & Wetmore,
Architects



Warren & Wetmore,
Architects

Main Entrance

Union Station,
Winnipeg



Windsor Station,
Montreal

Cast Iron Entrance

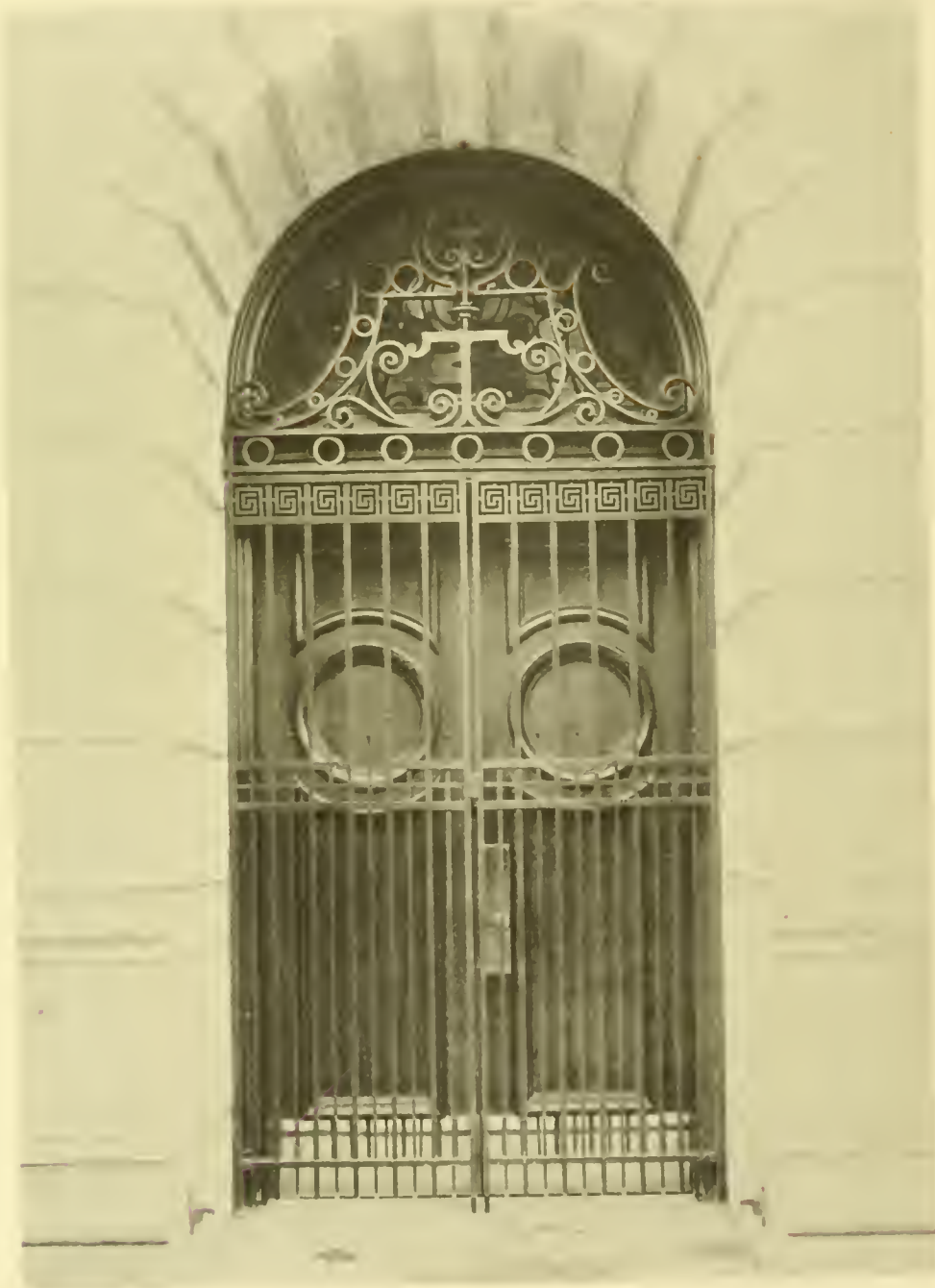
Barott, Blackader & Webster,
Architects



Cast Iron Office Entrance
(Hollow Steel Doors)

Windsor Station,
Montreal

Barott, Blackader & Webster,
Architect



Traders Bank,
Bloor St., Toronto

Wrought Iron Entrance

F. S. Baker,
Architect



Cast and Wrought Iron Entrance

Bank of Toronto,
West Toronto

Carrere & Hastings and E. G. Bird,
Architects



Rotunda, Union Station,
Winnipeg

Iron Entrances, Windows, Railing and Dome

Warren & Wetmore,
Architects



Bronze Elevator Enclosure and Stairs

Bank of Toronto,
Head Office

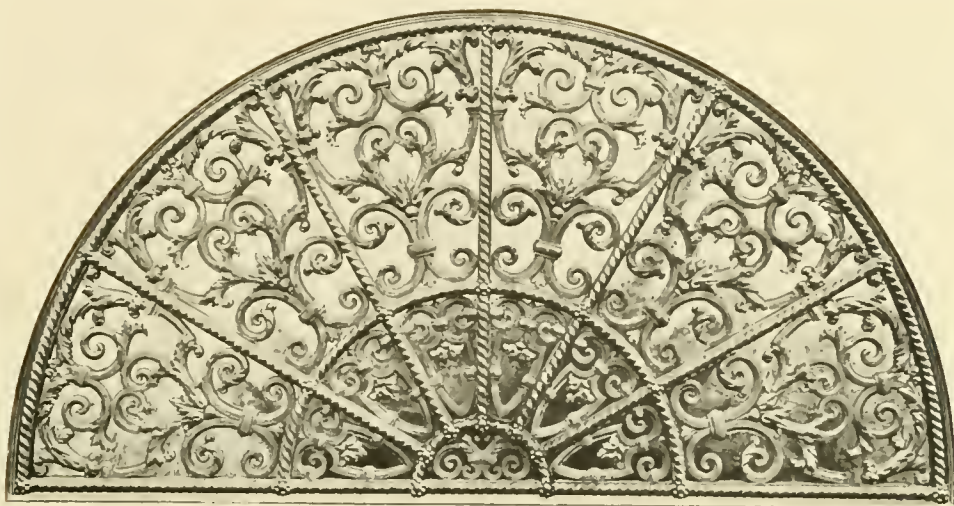
Carrere & Hastings and E. G. Bird,
Architects



Bronze Elevator Enclosures

Winnipeg Electric Ry. Chambers,
Winnipeg

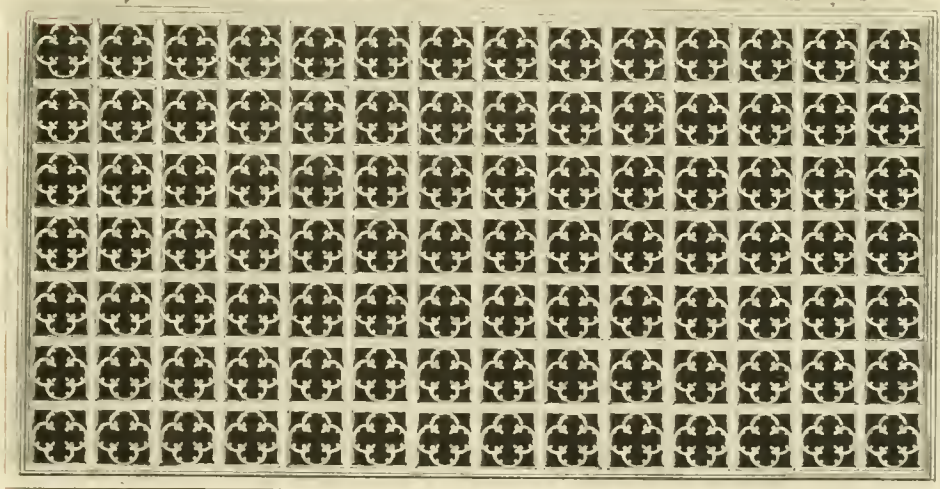
C. S. Frost and Pratt & Ross,
Architects



Bronze Grill

Winnipeg Electric Ry. Chambers,
Winnipeg

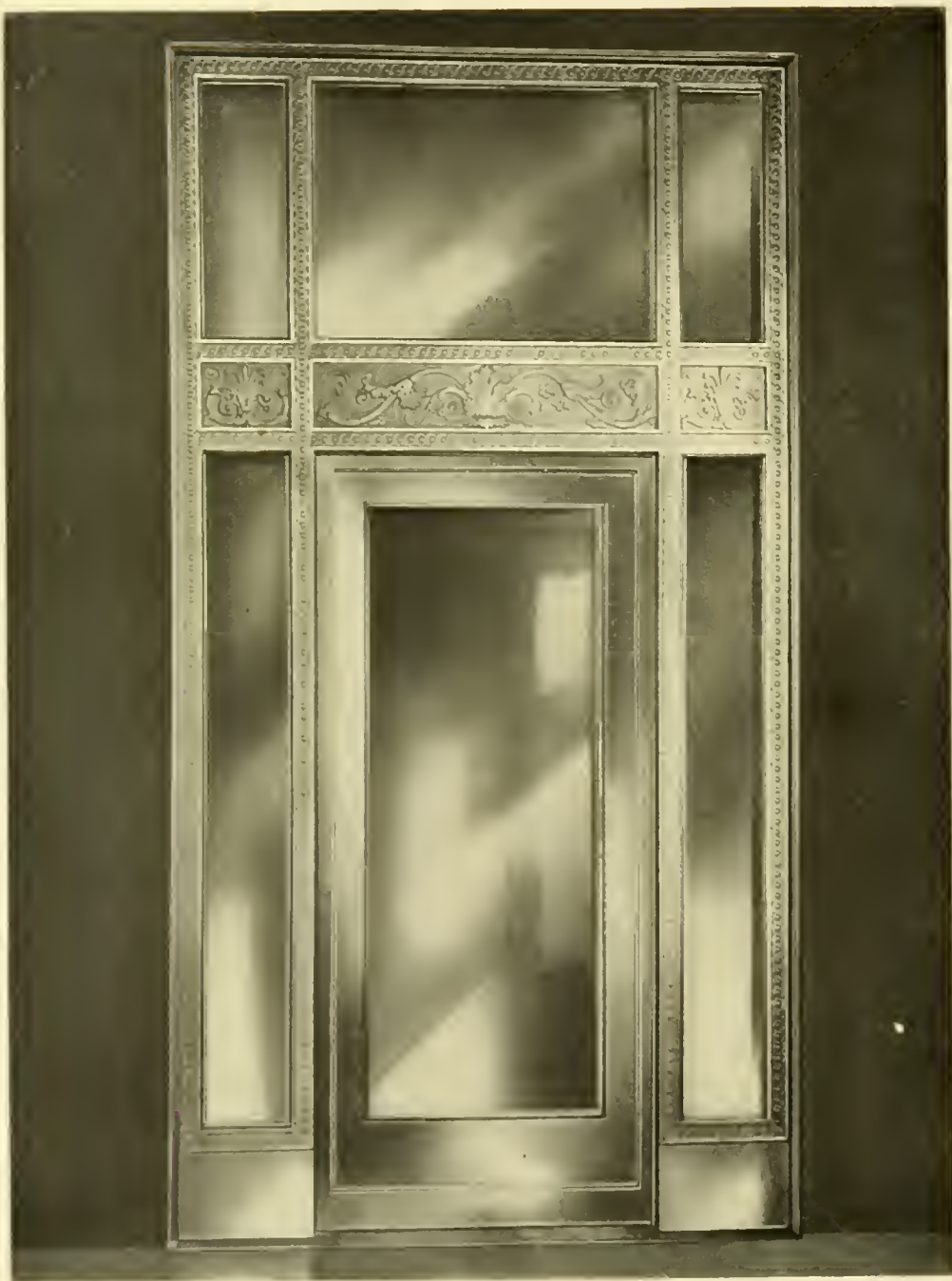
C. S. Frost and Pratt & Ross,
Architects



Bronze Register Grill

Winnipeg Electric Ry. Chambers,
Winnipeg

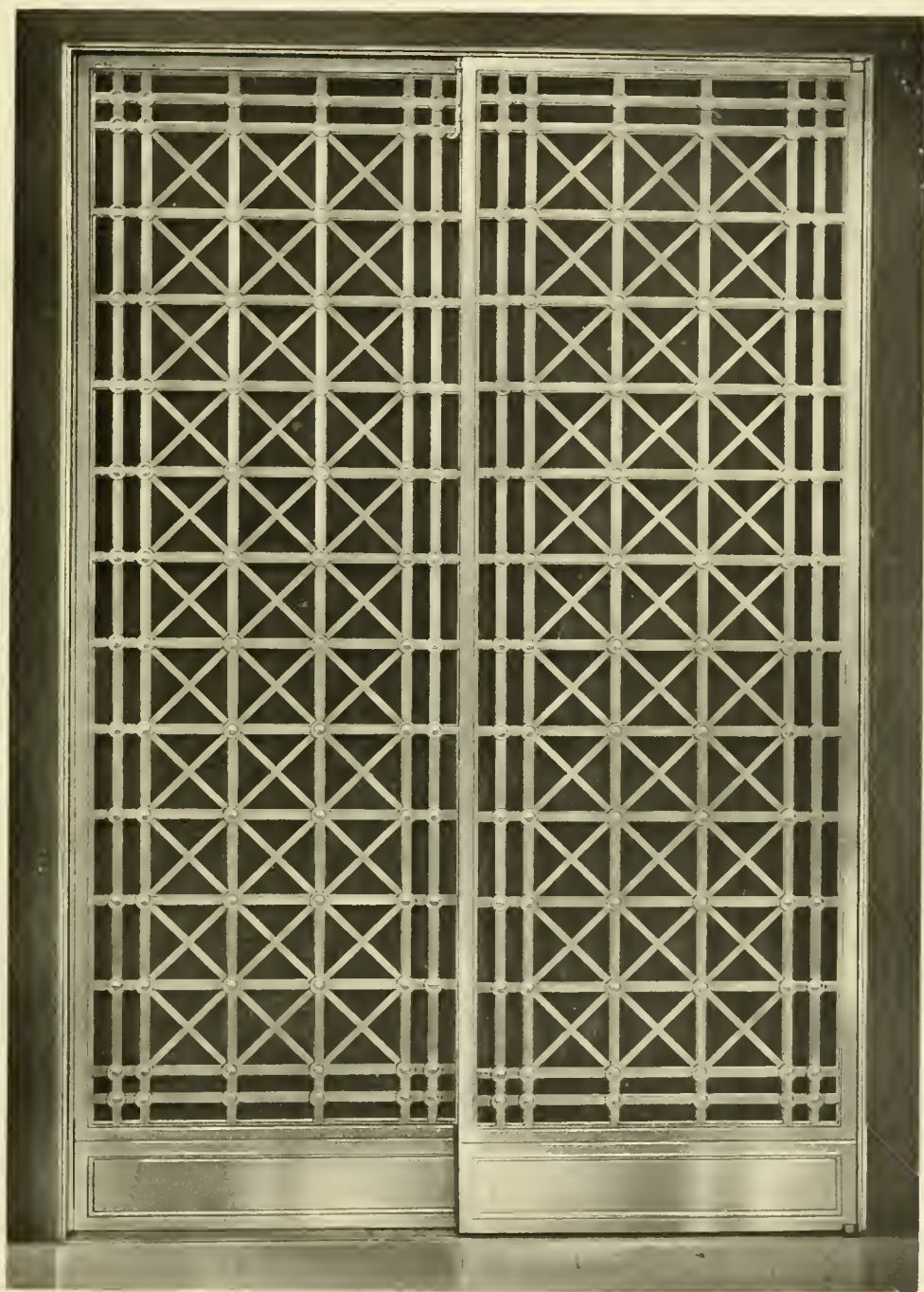
C. S. Frost and Pratt & Ross,
Architects



Bronze Elevator Enclosure

Bank of Montreal,
Winnipeg

McKim, Meade & White,
Architects



Bronze Elevator Enclosure

Bank of Montreal,
Winnipeg

McKim, Meade & White,
Architects



Federal Life Bldg.,
Hamilton

Bronze Elevator Enclosures

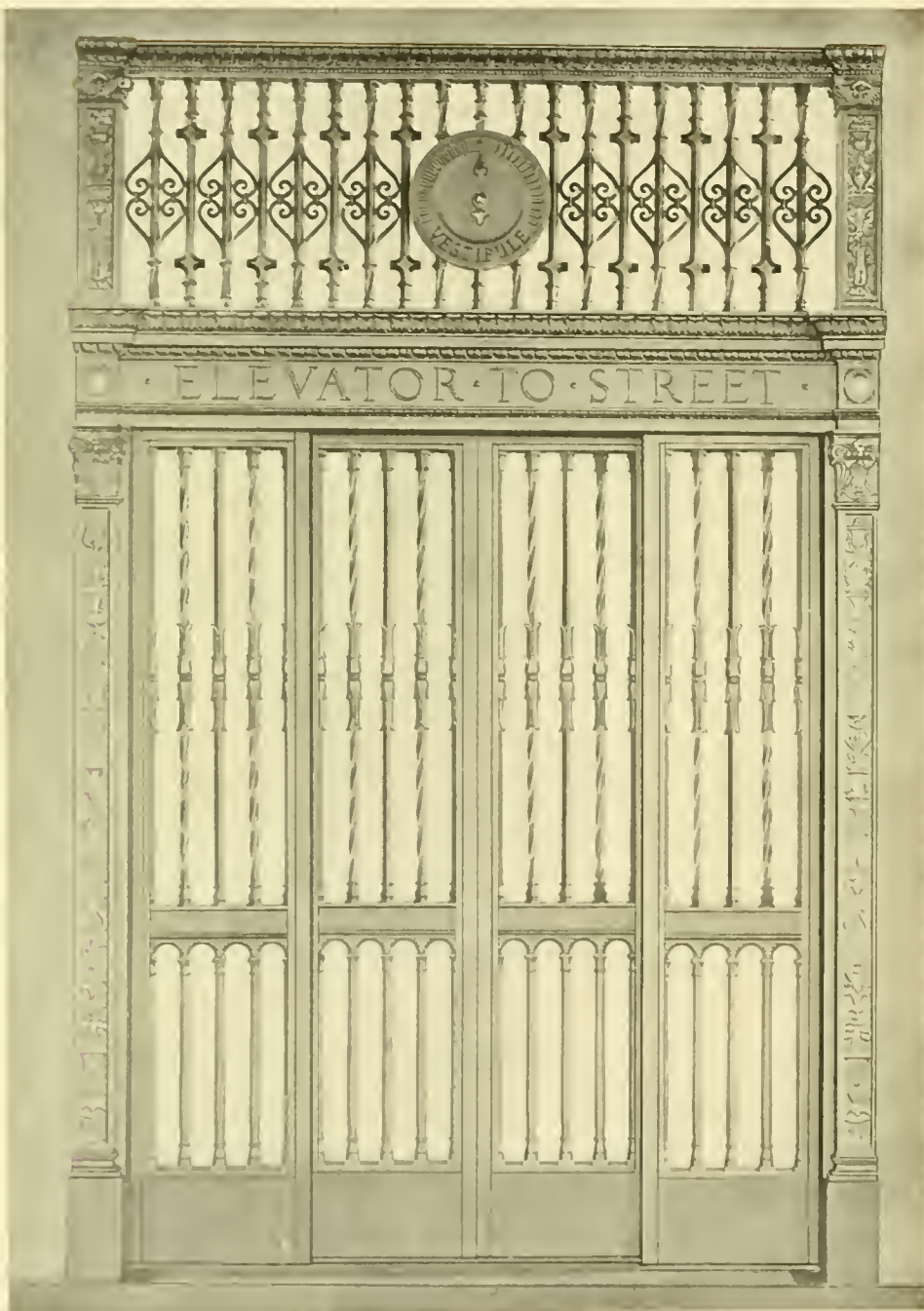
Finley & Spence,
Architects



B.C. Permanent Loan Bldg.,
Victoria

Bronze Elevator Enclosures

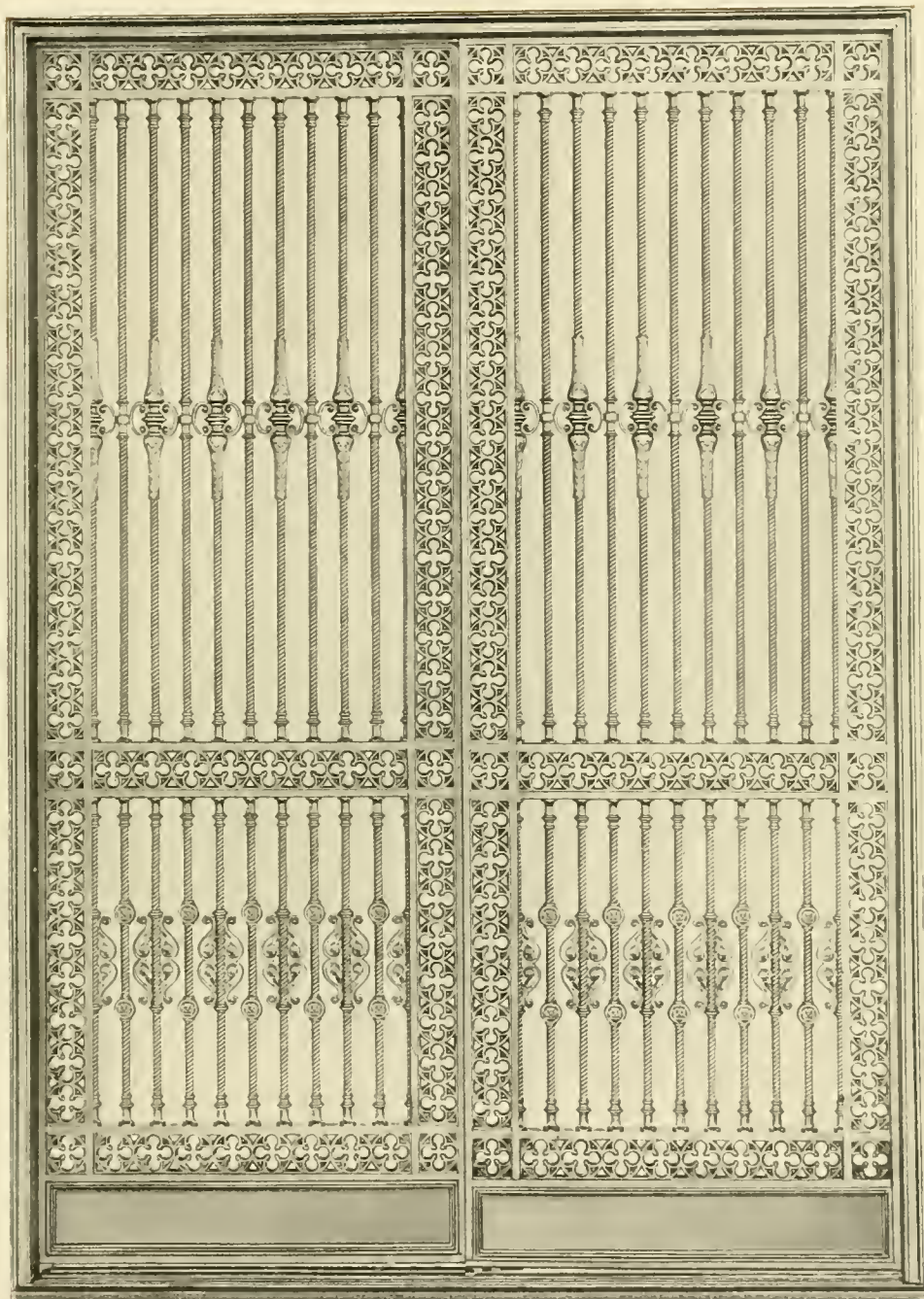
G. Griffith,
Architect



Cast Iron Elevator Enclosure

Windsor Station,
Montreal

Barott, Blackader & Webster,
Architects



Cast Iron Elevator Enclosure

Bank of Toronto,
Head Office

Carrere & Hastings and E. G. Bird,
Architects



Cast Iron Elevator Enclosure

Windsor Station,
Montreal

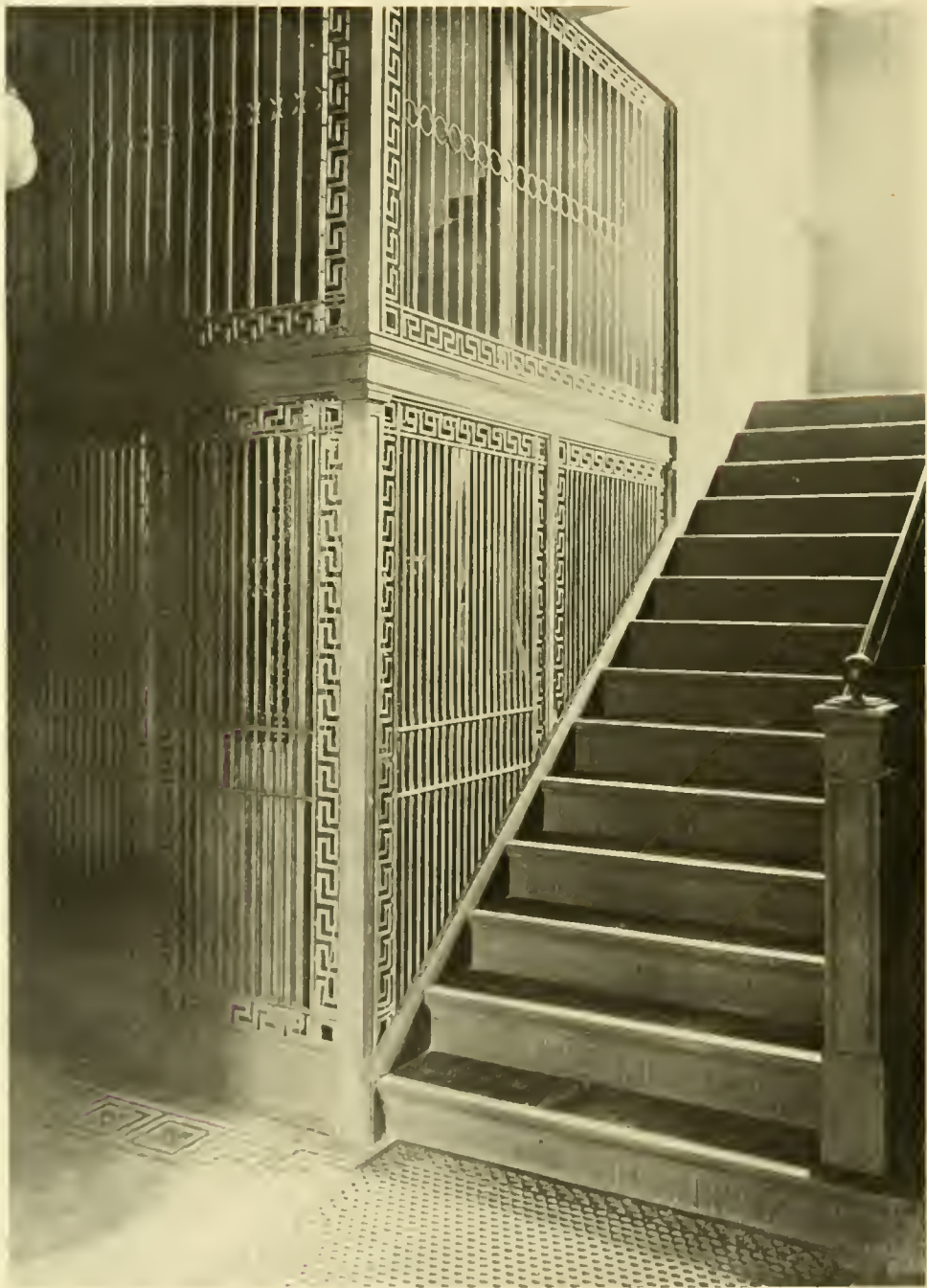
Barott, Blackader & Webster,
Architects



Cast and Wrought Iron Elevator Enclosures

Metropolitan Bldg.,
Vancouver

John S. Huyler & Son,
Architects



Cast and Wrought Iron Elevator Enclosure and Stair
Traders Bank,
Bloor St., Toronto

F. S. Baker,
Architect



Ryrie Bros., Limited,
Toronto

Bronze Marquise

Burke, Horwood & White,
Architects



Mason & Risch,
Toronto

Bronze Marquise and Store Front

Bond & Smith,
Architects



W. H. Cawthra,
Toronto

Cast Iron and Glass Marquise

Chapman & McGiffin,
Architects



Fort Garry Hotel (under construction),
Winnipeg

Cast Iron Marquise

Ross & Macdonald,
Architects



Cast Iron Marquise

Fort Garry Hotel (under construction),
Winnipeg

Ross & Macdonald,
Architects



Hudson's Bay Company,
Calgary

Cast Iron Marquise and Entrance

Burke, Horwood & White,
Architects



Birks' Building,
Ottawa

Cast Iron Marquise, Entrance and Store Front

Weeks & Keefer,
Architects



Art Metropole,
Toronto

Cast Iron Store Front

Jas. Mitchell,
Architect



Cast Iron Store Front

Harcourt & Son, Ltd.,
Toronto

Wickson & Gregg,
Architects



Union Bank,
Toronto

Cast Iron Door and Window Frame

Darling & Pearson,
Architects



Power House,
Electrical Development Co., Niagara Falls

Cast Iron Window Frames and Sash

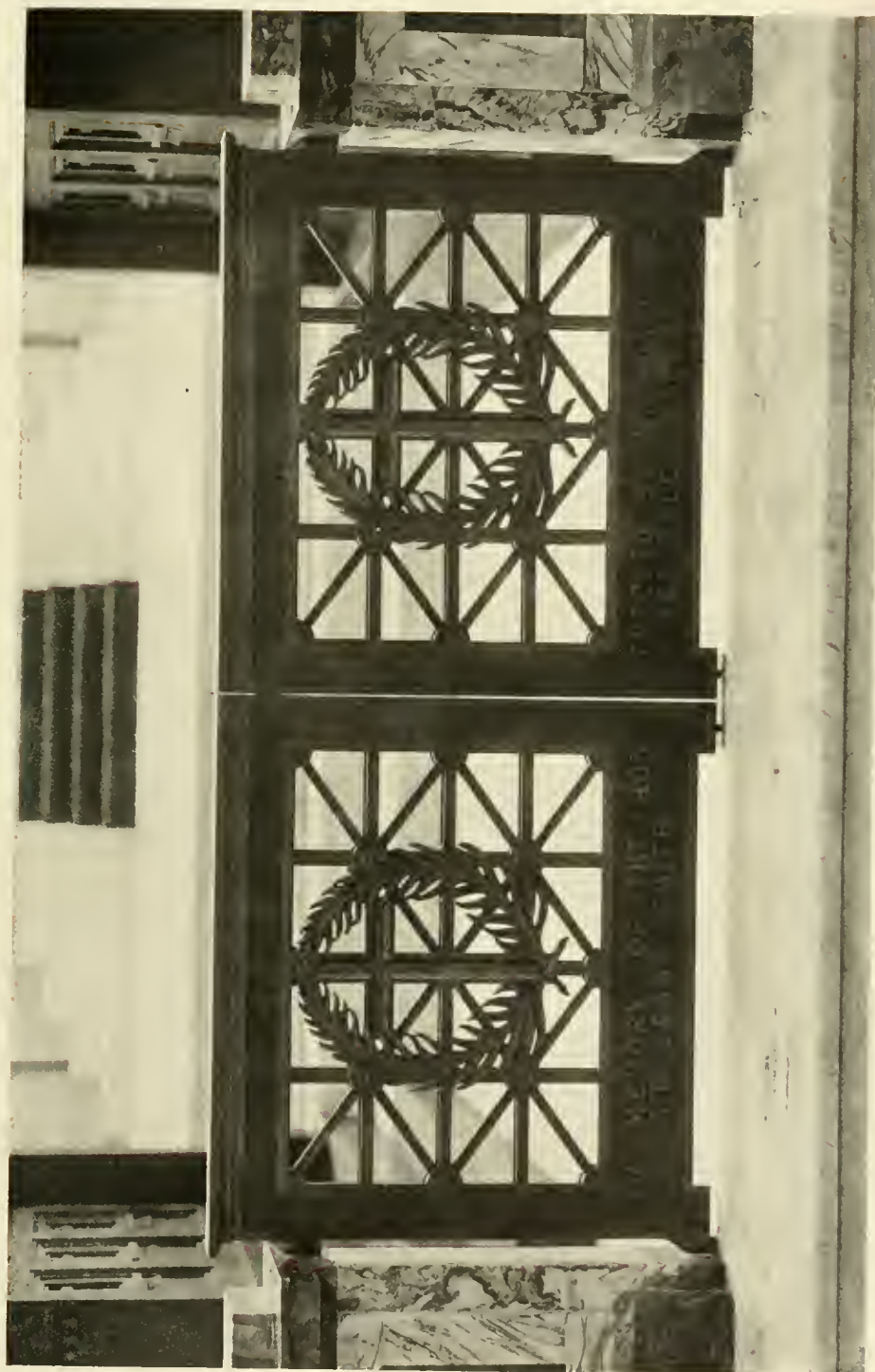
E. J. Lennox,
Architect



C.P.R. Hotel,
Vancouver

Cast Iron Window Frame

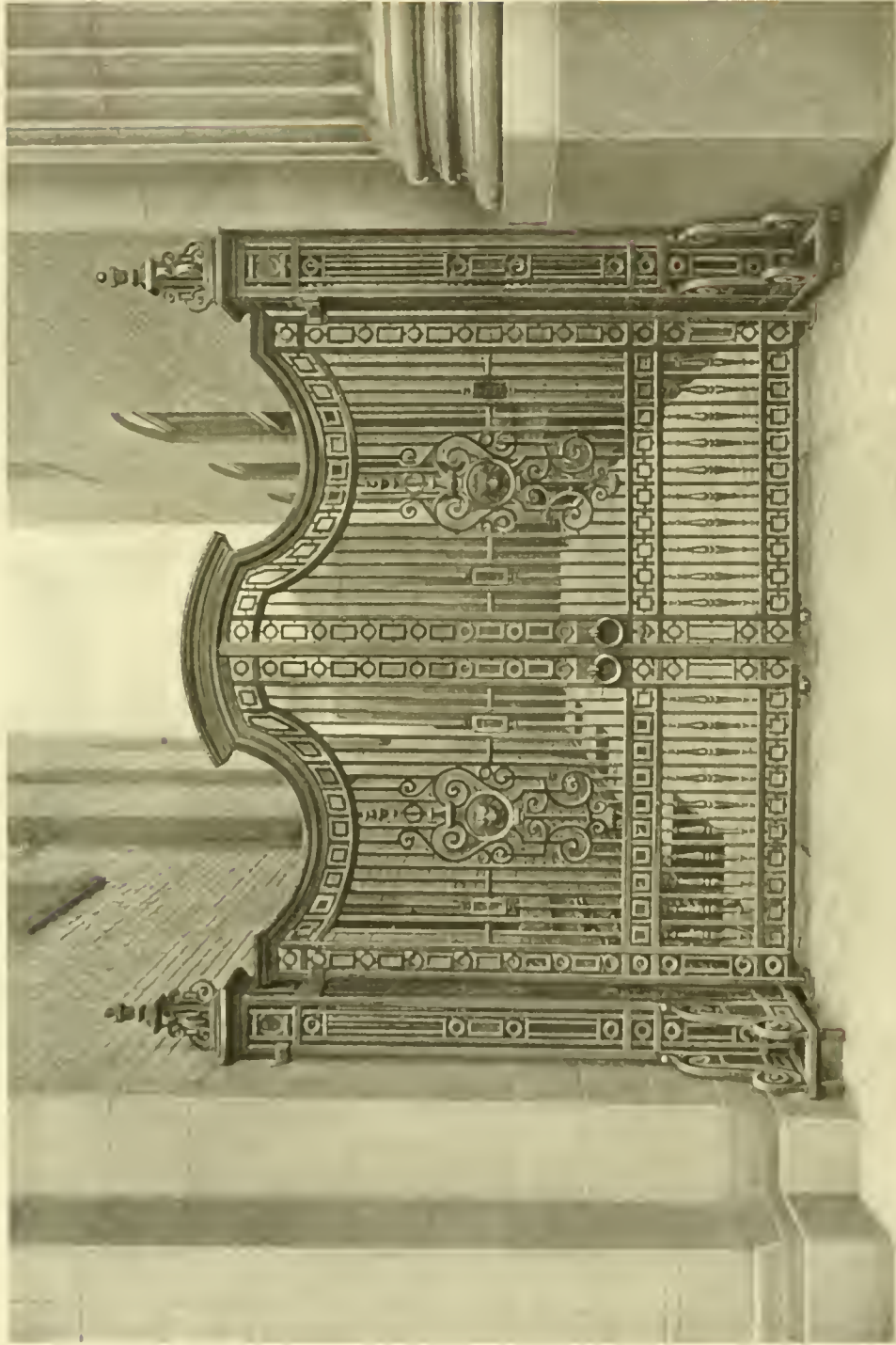
Painter & Swales,
Architects



Bronze Altar Railing Gates

Church of Our Lady of Lourdes,
Toronto

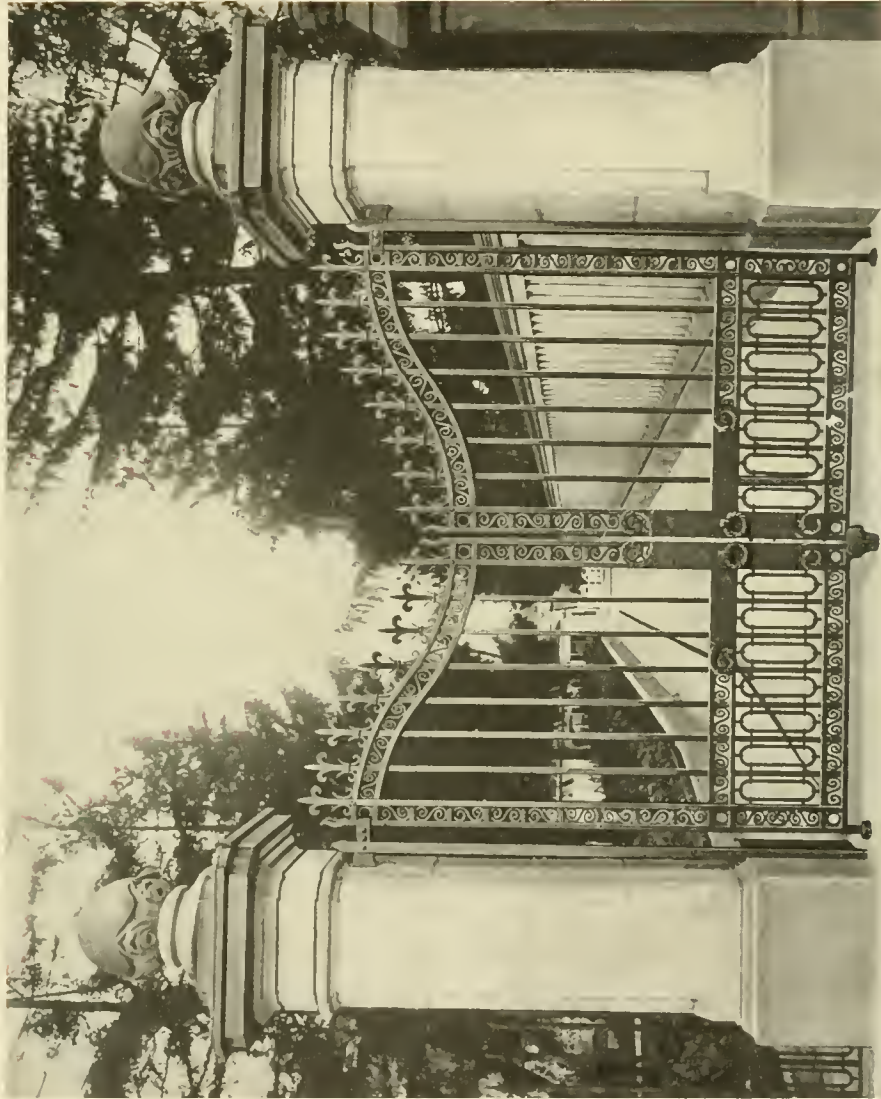
J. P. Hynes,
Architect



Imperial Bank,
Hamilton

Wrought Iron Gates

John M. Lyle,
Architect



Residence of W. A. Wood,
Hamilton

Wrought Iron Entrance Gates

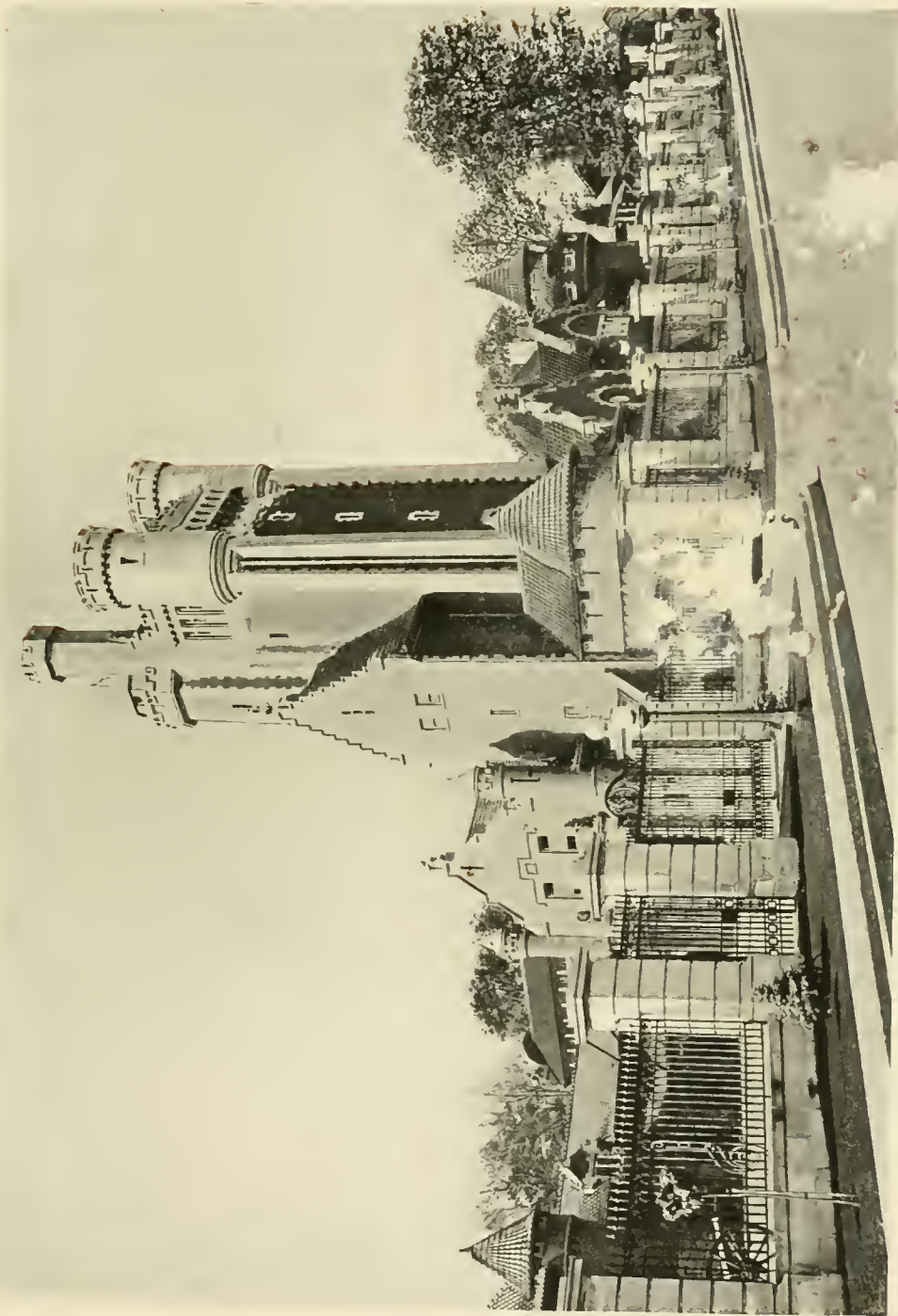
Mills & Hutton,
Architects



Mortimer B. Davis,
Montreal

Wrought Iron Gates and Fence

Robert Findlay,
Architect



Sir H. M. Pellatt,
Toronto

Wrought Iron Gates and Fen

by L. Lennox,
architect



General Hospital,
Toronto

Iron Fence and Lamps

Darling & Pearson,
Architects



Wrought Iron Gates

Home Bank,
Fernie

George W. Gouinlock,
Architect



Wrought Iron Fire Escape

C P R. Office Building,
Toronto

Darling & Pearson,
Architects



Windsor Station,
Montreal

Wrought Iron Fire Escape

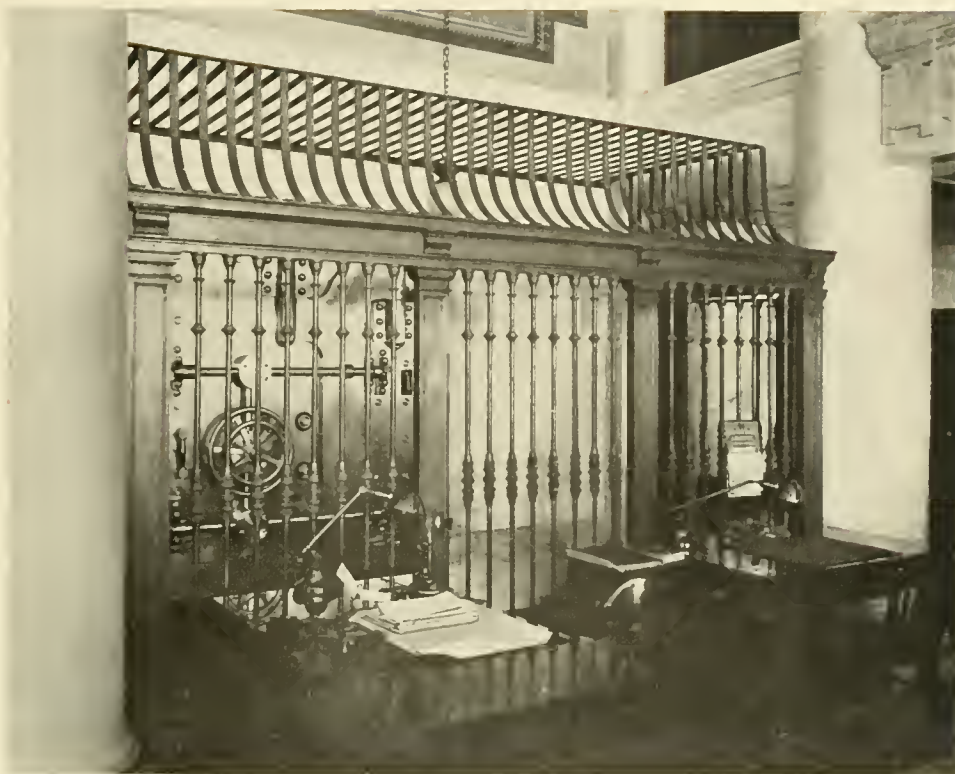
Barott, Blackader & Webster,
Architects



Bell Telephone Bldg.,
Hamilton

Fire Escape

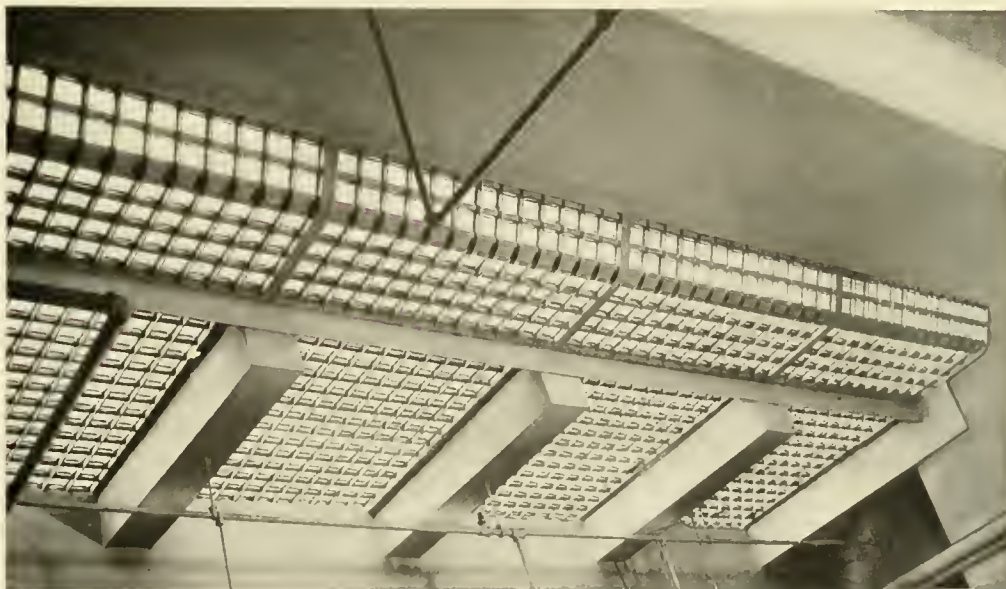
W. J. Carmichael,
Architect



Toronto General Trusts
Corporation

Cast Iron and Steel Vault Grills

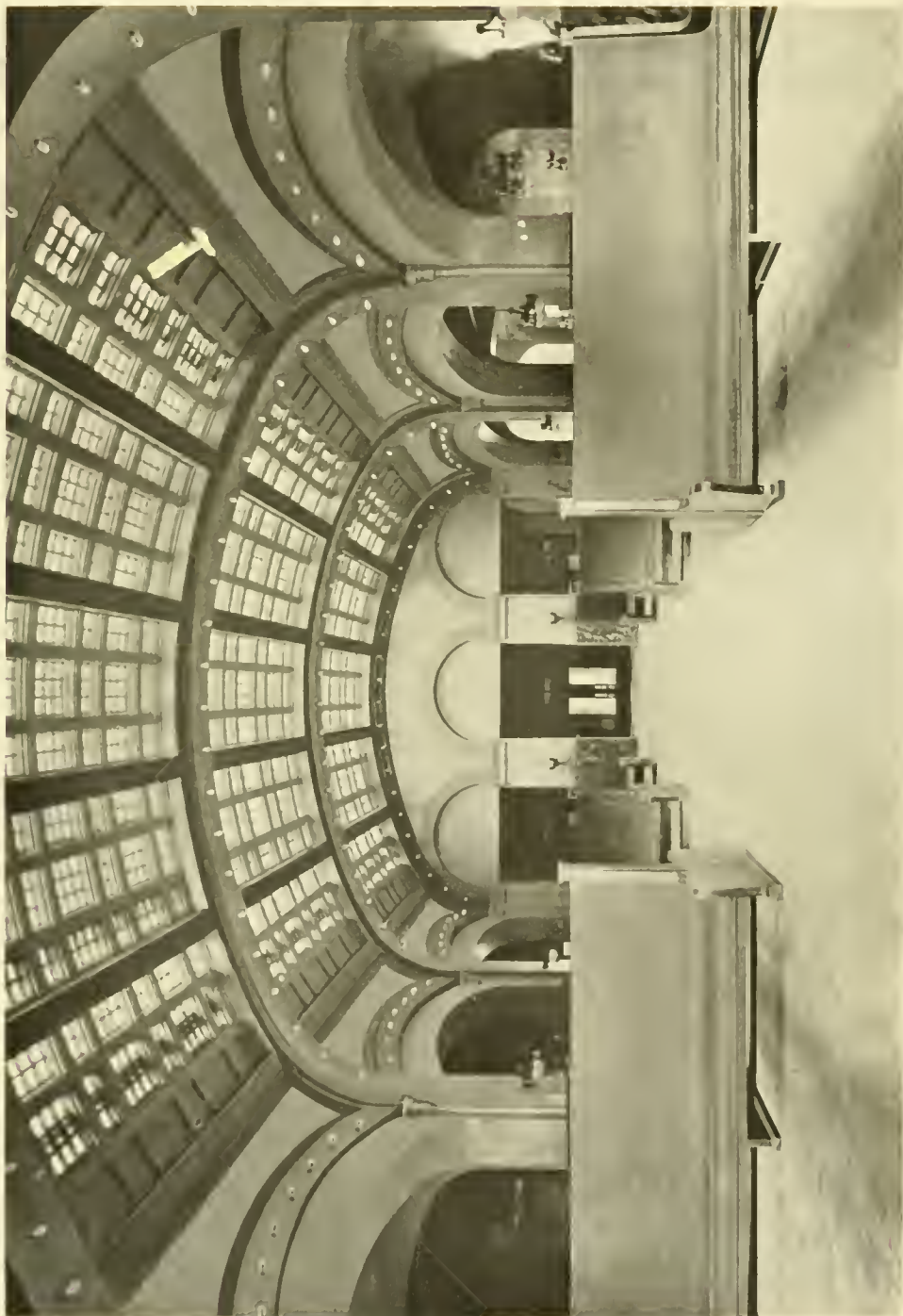
G. M. Miller,
Architect



Robert Simpson Co., Ltd.,
Toronto

Sidewalk Lights

Burke, Horwood & White,
Architects



General Waiting Room, Union Station,
Winnipeg

Vault Light Ceiling

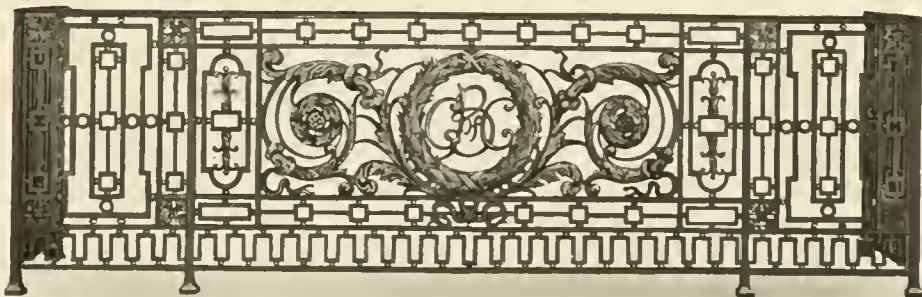
Warren & Wetmore,
Architects



Cast Iron Window Spandril

B.C. Electric Railway,
Vancouver

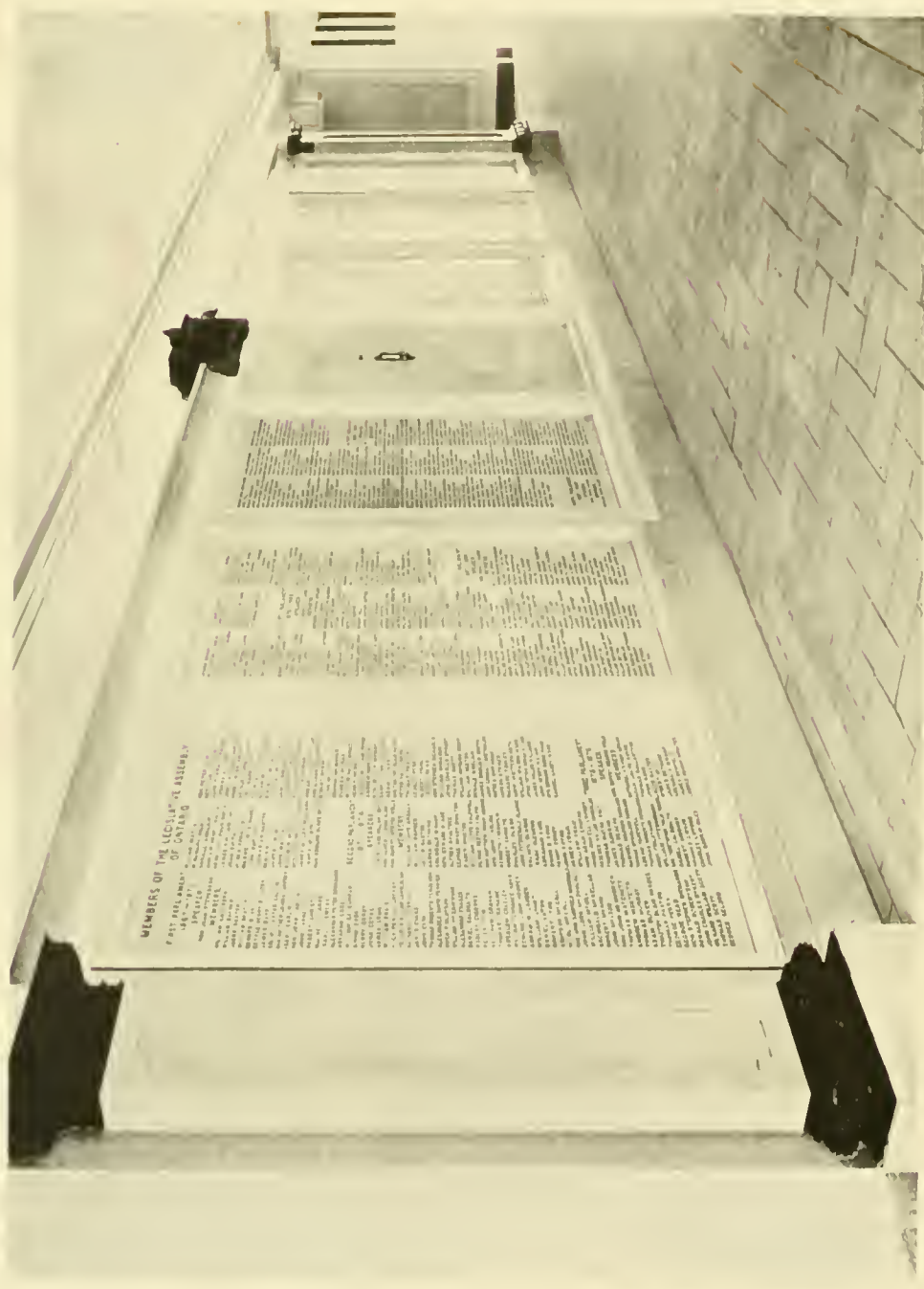
Somervell & Putnam,
Architects



Iron Balcony Railing

Bank of Commerce,
Montreal

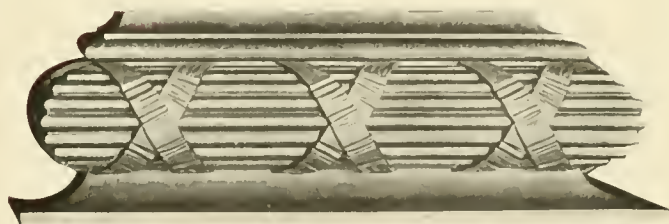
Darling & Pearson,
Architects



Legislative Assembly,
Toronto

Bronze Tablet, Capitals and Bases

George W. Gouinlock,
Architect



Details of Bronze Tablet, Capitals and Bases

Legislative Assembly,
Toronto

George W. Gouinlock,
Architect

THE HUDSON'S BAY COMPANY INC. 1670

Hudson's Bay Co. Store,
Calgary

Bronze Tablet

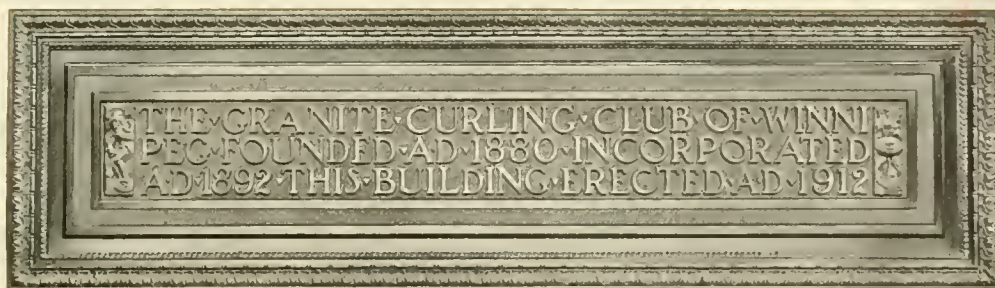
Burke, Horwood & White,
Architects



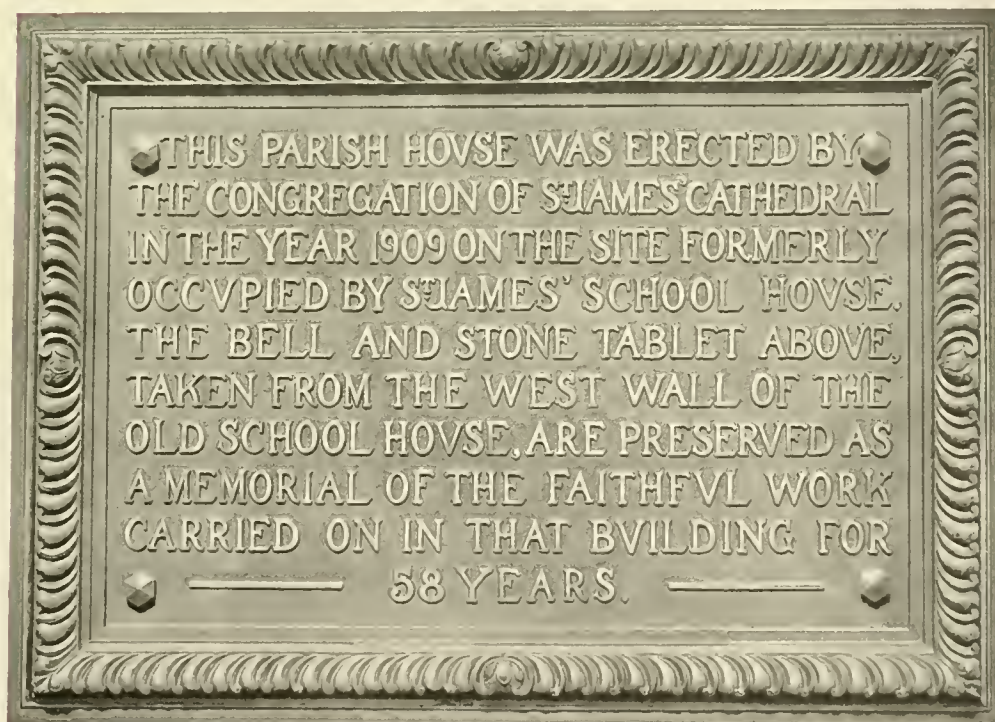
Bank of Hamilton,
Hamilton

Bronze Tablet

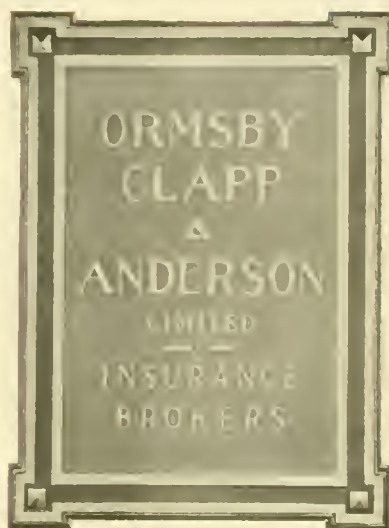
Mills & Hutton,
Architects



Bronze Tablet



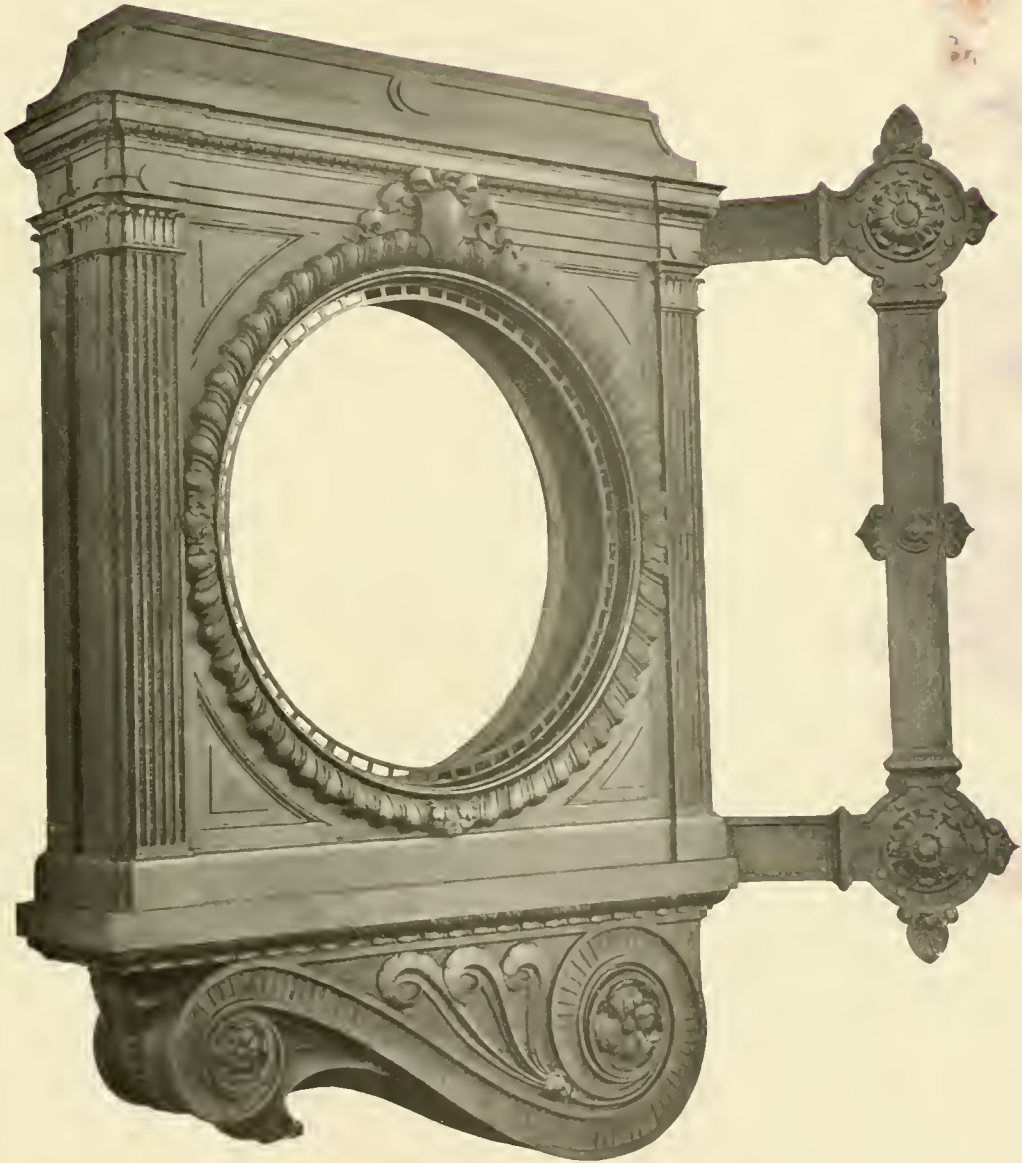
Bronze Tablet



Bronze Tablet



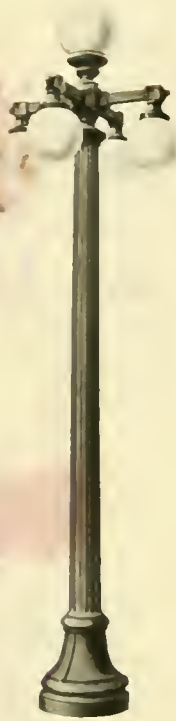
Bronze Tablet



Cast Iron Clock Frame

Hudson's Bay Company,
Calgary

Burke, Horwood & White,
Architects



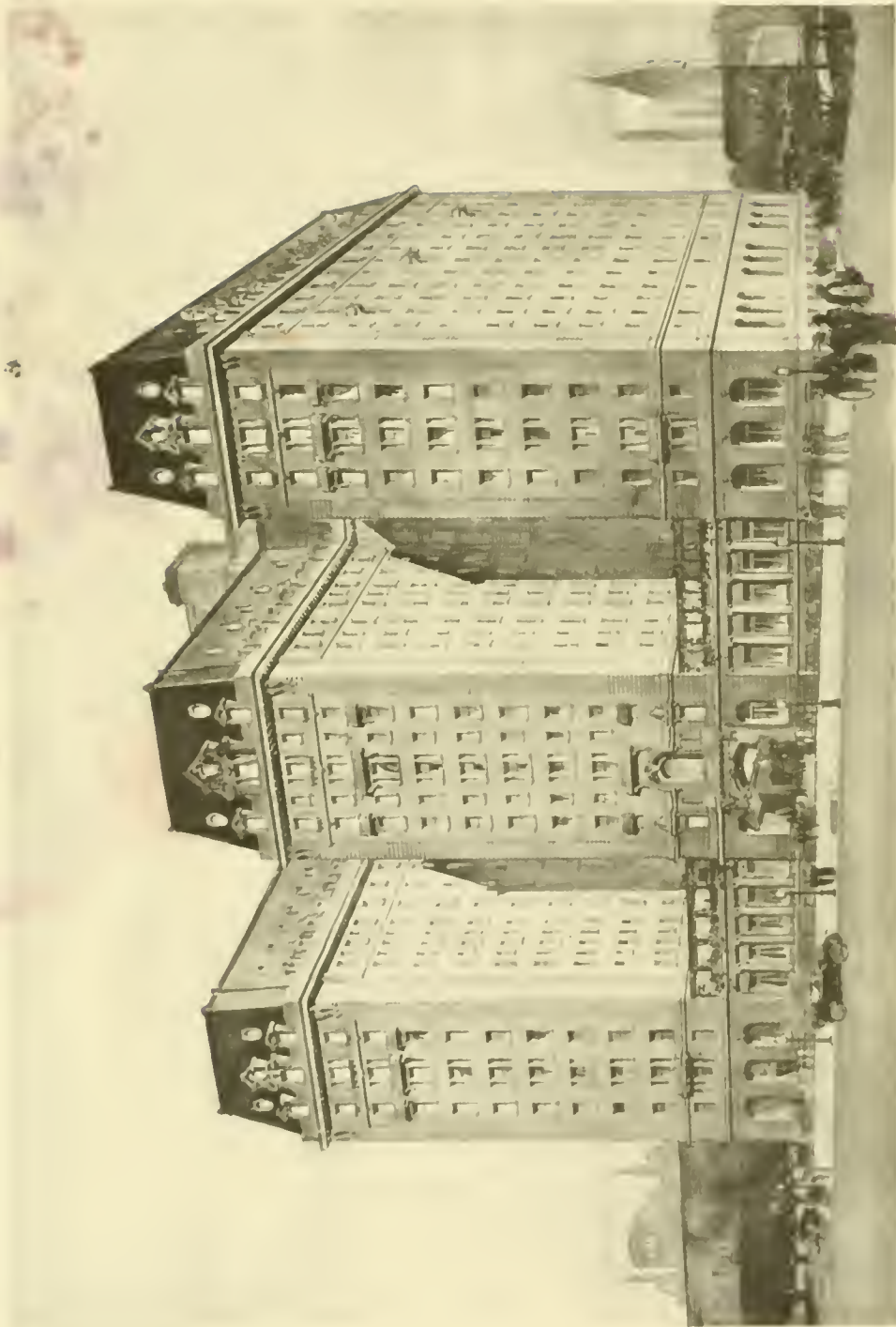
Cast Iron Lamp Standards



Cast Iron Window Frames, Spandrils, etc.

Guarantee Co. of North America
(From a sketch),
Montreal

Kenneth G. Rea,
Architect



C.P.R. Hotel (from a sketch),
Calgary

Ornamental Iron Work

Edward and W. S. Maxwell,
Architects

Some of Our Contracts

Bank of Montreal, St. Johns, Nfld.	Peden & McLaren, Architects
Bank of Nova Scotia, Kingston, Jamaica	Darling & Pearson, Architects
Dominion Iron & Steel Co. Bldg., Sydney, N.S.	Ross & MacFarlane, Architects
Bank of Nova Scotia, Truro, N.S.	Darling & Pearson, Architects
Merchants Bank, Halifax, N.S.	Hogle & Davis, Architects
Transportation Building, Montreal	Carrere & Hastings and E. G. Bird, Architects
Windsor St. Station, Montreal	Barott, Blackader & Webster, Architects
Canadian Bank of Commerce, Montreal	Darling & Pearson, Architects
Drummond Building, Montreal	H. C. Stone, Architect
Guarantee Building, Montreal	Kenneth G. Rea, Architect
Imperial Wire and Cable Co. Buildings, Montreal	W. J. Carmichael, Architect
Jacobs Building, Montreal	Mitchell & Creighton, Architects
Chateau Laurier, Ottawa	Ross & MacFarlane, Architects
Rosenthal Building, Ottawa	Weeks & Keefer, Architects
Blackburn Bldg., Ottawa	W. E. Noffke, Architect
Royal Bank Bldg., Toronto	Ross & Macdonald, Architects
Dominion Bank, Head Office, Toronto	Darling & Pearson, Architects
Toronto University, Toronto	Darling & Pearson, Architects
Toronto General Hospital, Toronto	Darling & Pearson, Architects
Royal Bank Bldg., Toronto	Carrere & Hastings and E. G. Bird, Architects
Bank of Toronto, Head Office Bldg.	Carrere & Hastings and E. G. Bird, Architects
C.P.R. Office Building, Toronto	Darling & Pearson, Architects
Toronto General Trust Bldg., Toronto	G. M. Miller, Architect
Bowles Building, Toronto	Harris & Merritt, Architects
Traders Bank, Bloor & Yonge Branch	F. S. Baker, Architect
Robt. Simpson Co. Store, Toronto	Burke, Horwood & White, Architects
Quebec Bank Bldg., Toronto	Curry & Sparling, Architects
Ontario Club, Toronto	Sproutt & Rolph, Architects
Mason & Risch Bldg., Toronto	Bond & Smith, Architects
Bank of Toronto Bldg., Queen & Logan Ave., Toronto	Chapman & McGiffin, Architects
J. C. Eaton Residence, Toronto	Wickson & Gregg, Architects
Dental College, Toronto	Burke, Horwood & White, Architects
Gayety Theatre, Toronto	G. W. Gouinlock, Architect
Union Bank, Head Office Building, Toronto	Darling & Pearson, Architects
Standard Bank, Head Office, Toronto	Darling & Pearson, Architects
Mutual Life Assurance Co. Bldg., Waterloo	Darling & Pearson, Architects
O'Keefe Brewery Co. Bldg., Toronto	C. F. Hettinger & Co., Boston, Architects
International Mansoleum, Toronto	Green & Wicks, Buffalo, Architects
W.C.T.U. Building, Toronto	Burke, Horwood & White, Architects
Lorie Building, Toronto	Burke, Horwood & White, Architects
Ryrie Building, Yonge & Shuter Sts., Toronto	Burke, Horwood & White, Architects

Some of Our Contracts

Imperial Bank, Hamilton	Jno. M. Lyle, Architect
Registry Office, Hamilton	Stewart McPhee, Architect
Landed Banking & Loan Bldg., Hamilton	Chas. Mills, Architect
Terminal Station Bldg., Hamilton	Mills & Hutton, Architects
Federal Life Bldg., Hamilton	Finley & Spence, Architects
Bell Telephone Building, Hamilton	W. J. Carmichael, Architect
Dominion Bank, Hamilton	Carrere & Hastings and E. G. Bird, Architects
Bank of Hamilton Head Office, Hamilton	Mills & Hutton, Architects
Electrical Development Co. Power House, Niagara Falls	E. J. Lemox, Architect
Court House Entrance, Brantford	Taylor & Taylor, Architects
Dominion Bank, St. Thomas	Carrere & Hastings and E. G. Bird, Architects
Dominion Bank, Windsor	Carrere & Hastings and E. G. Bird, Architects
Prince Arthur Hotel, Port Arthur	Warren & Wetmore, Architects
Union Station, Winnipeg	Warren & Wetmore, Architects
Fort Garry Hotel, Winnipeg	Ross & Macdonald, Architects
Bank of Montreal, Winnipeg	McKim, Meade & White, Architects
Canadian Bank of Commerce, Winnipeg	Darling & Pearson, Architects
Great West Life Building, Winnipeg	John D. Atchison & Co., Architects
Merchants Bank, Winnipeg	John D. Atchison & Co., Architects
Royal Bank, Winnipeg	Carrere & Hastings and E. G. Bird, Architects
Bank of Nova Scotia, Winnipeg	Darling & Pearson, Architects
Winnipeg Electric Building, Winnipeg	C. S. Frost and Pratt & Ross, Architects
Land Titles Building, Regina	Department of Public Works, Architects
Land Titles Building, Calgary	Department of Public Works, Architects
C.P.R. Hotel, Calgary	E. & W. S. Maxwell, Architects
Hudson's Bay Store, Calgary	Burke, Horwood & White, Architects
Bank of Ottawa, Vancouver	Somervell & Putnam, Architects
B.C. Electric Bldg., Vancouver	Somervell & Putnam, Architects
Pacific Building, Vancouver	Somervell & Putnam, Architects
Merchants Bank, Vancouver	Somervell & Putnam, Architects
Canadian Bank of Commerce, Vancouver	Darling & Pearson, Architects
Canada Life Bldg., Vancouver	Darling & Pearson, Architects
Court House, Vancouver	Thos. Hooper, Architect
Imperial Bank, Vancouver	Darling & Pearson, Architects
Dominion Bank, Vancouver	Carrere & Hastings and E. G. Bird, Architects
Bank of Montreal, Vancouver	Honeyman & Curtis, Architects
Vancouver Hotel, Vancouver	Painter & Swales, Architects
Empress Hotel, Victoria	F. M. Rattenbury, Architect
B.C. Permanent Loan Bldg., Victoria	G. Griffith, Architect
Dominion Bank, Victoria, B.C.	Carrere & Hastings and E. G. Bird, Architects

Classification of Our Products

GRILLE WORK, BRONZE AND IRON.

REGISTER FACES IN IRON AND BRONZE.

STAIRS OF EVERY DESCRIPTION IN CAST IRON OR STEEL, BRONZE PLATED OR
PAINTED, OR IN GENUINE BRONZE.

RAILINGS IN WROUGHT IRON, CAST IRON, PIPE OR GENUINE BRONZE.

ELEVATOR ENCLOSURES IN CAST IRON, WROUGHT IRON AND GENUINE BRONZE,
MADE IN GRILL FORM OR IN SASH WITH GLASS IN PANELS.

ELEVATOR CARS TO SPECIAL DESIGNS IN ALL FINISHES.

ENTRANCE DOORS IN CAST IRON, PANELLED STEEL, GENUINE BRONZE,
BRONZE PLATED OR BRONZE COVERED WOOD.

FRAMES IN CAST IRON, STEEL AND BRONZE FOR WINDOW OPENINGS,
ENTRANCES, ETC.

SPANDRILS AND MULLIONS FOR WINDOW OPENINGS.

THRESHOLDS OF ALL KINDS IN LEAD, STEEL, BRONZE OR BRASS.

MARQUESES AND CANOPIES, INCLUDING GLASS, COPPER FLASHINGS, ETC.,
COMPLETE.

STORE FRONTS IN CAST IRON OR STEEL BARS AND IN GENUINE BRONZE
OR BRASS.

STEEL SASH.

WINDOW GUARDS, PLAIN AND ORNAMENTAL.

LAMP STANDARDS, BRACKET LAMPS AND LANTERNS, IN WROUGHT IRON, CAST
IRON AND GENUINE BRONZE.

MEMORIAL TABLETS IN BRONZE.

SIGNS IN BRONZE AND BRASS, LETTERS RAISED OR INCISED.

COUNTER RAILINGS FOR BANKING ROOMS, IN PLATED IRON OR GENUINE BRONZE.

TELLERS' CAGES FOR BANKING ROOMS, IN PLATED IRON OR GENUINE BRONZE.

BALCONIES.

DIRECTORY BOARD FRAMES IN IRON AND BRONZE.

Classification of Our Products

FLAG POLES IN STEEL, COMPLETE WITH ALL STAYS, MAST, BLOCKS AND GUYS.

STEEL PLATE DOORS AND FRAMES.

STEEL FRAMES FOR KALAMEINED DOORS.

BOILER PLATE WAINSCOT.

WHEEL GUARDS OF CAST IRON OR STEEL.

SKYLIGHT GUARDS OF WIRE MESH.

SIDEWALK LIGHTS OF REINFORCED CONCRETE.

SIDEWALK LIGHTS OF STEEL BAR CONSTRUCTION.

SIDEWALK LIGHTS WITH CAST IRON FRAMES.

SKYLIGHTS SIMILAR TO SIDEWALK LIGHTS, WITH LARGER GLASS.

SIDEWALK DOORS WITH VAULT LIGHTS INSERTED.

SIDEWALK DOORS OF CHECKERED STEEL.

COAL HOLE COVERS, WITH GLASS INSERTED.

COAL HOLE COVERS, WITH CHECKERED SURFACE.

COAL CHUTES OF STEEL.

CLEAN-OUT DOORS.

FENCES OF ALL KINDS.

ENTRANCE GATES.

AREA GRATINGS.

FLOOR GRATINGS OF CAST AND WROUGHT IRON.

PIPE TRENCH COVERS AND FRAMES.

FIRE ESCAPES.

LADDERS OF ALL KINDS.

LOCKERS, EXPANDED METAL AND PRESSED STEEL.

BRONZE AND GLASS SHOW CASES AND MUSEUM CASES.

FOUNTAINS (CAST IRON).

