

Season 1914.

# RAINCOATS

FOR

## Women, Misses and Girls.



This  
Book  
for  
Merchants

THE MAIL ORDER HOUSE OF CANADA  
**Gordon Mackay**  
& CO. LIMITED.

Wholesale Merchants and Manufacturers,  
TORONTO.

Special  
No.  
26  
Catalogue



**F**INE

**F**ABRICS

**F**REE

**F**ROM

**F**AULTS



# Women's, Misses' and Children's Raincoats.

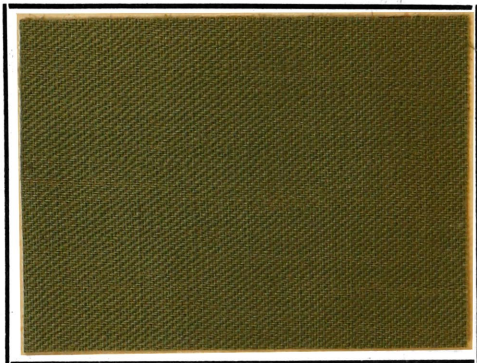
This Special Catalogue of Ladies' Raincoats is presented in the hope that it will be of service to the merchant in selling over the counter as well as in making selections therefrom for stock purposes.

The illustrations show accurately the style of the garments, and the clippings of the material in which the design comes are pasted alongside of same.

Gordon, Mackay & Co. Limited,  
Toronto.

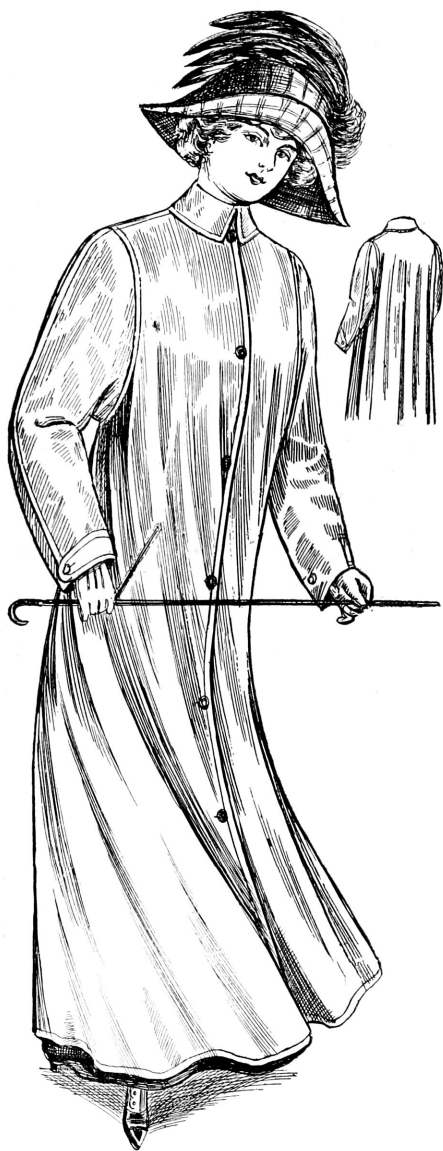


**E**



**LD1350C/5325.**—Cotton Paramatta Waterproof Coat, made with Raglan sleeves, high neck, slash pockets, straps on cuffs. Color: Fawn. Sizes: 16 and 18 years Misses, and 34 to 42 bust measure. Lengths: 48 to 56 inches. Each

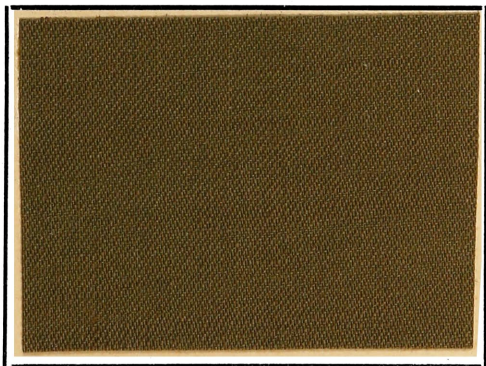




**D**



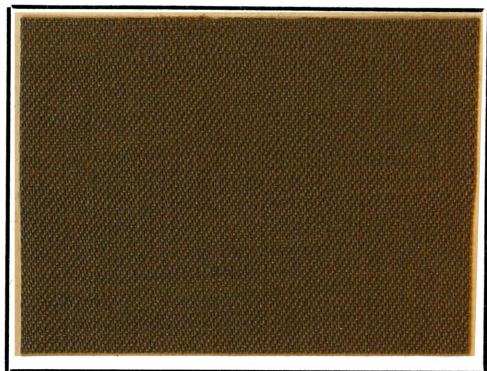
**G**



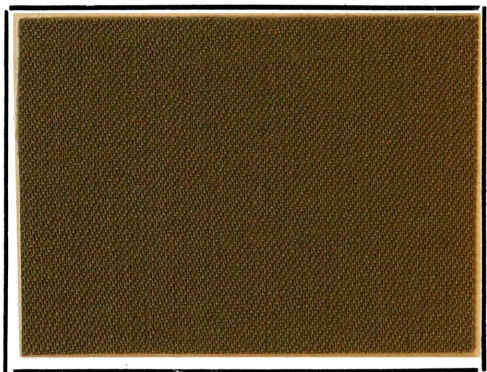
**LD1351C/7395.**—Wool Paramatta Waterproof Coat, made with coat sleeves in manish style, slash pockets, high collar, straps on cuffs. Colors: Fawn or Olive. Sizes: 16 and 18 year Misses, and 34 to 42 bust measure. Lengths: 48 to 56 inches. Each



**D**

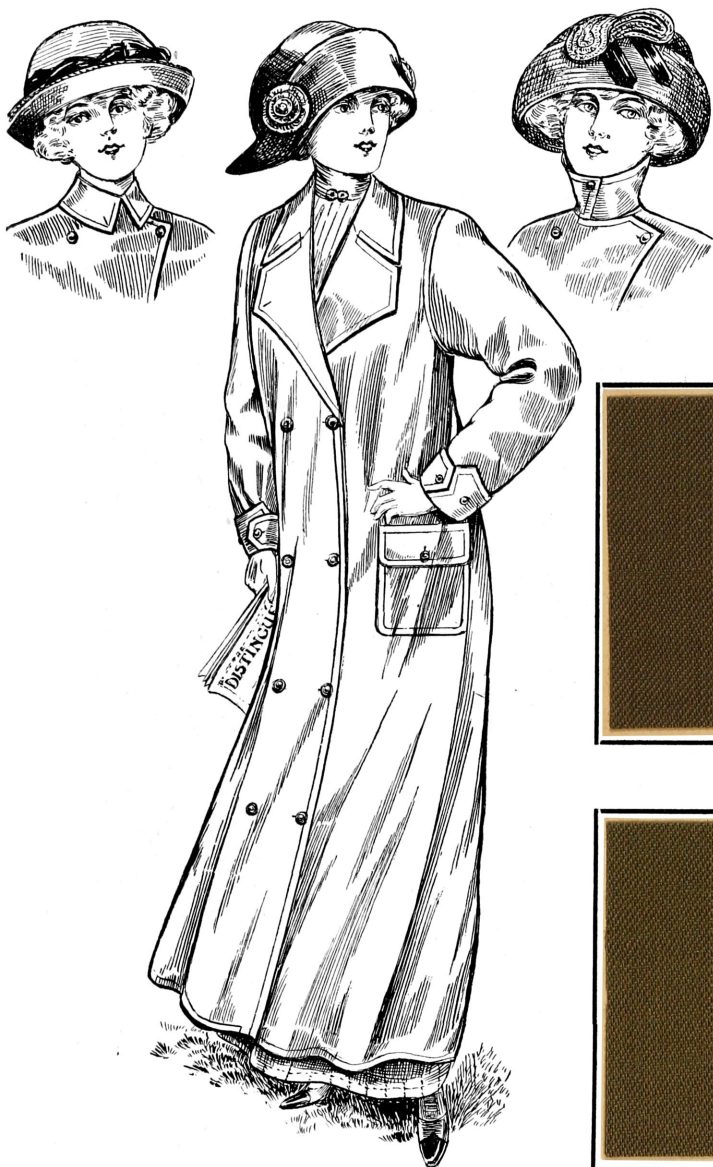


**G**

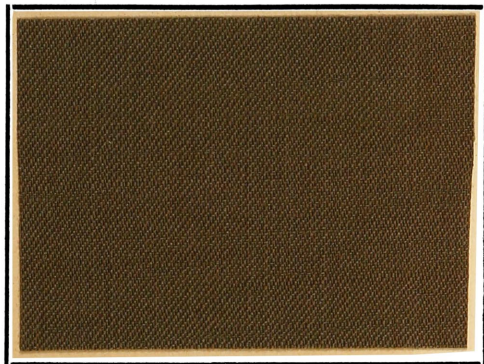


**LD1353C/6425.**—Wool Paramatta Waterproof Coat, made with set in coat sleeves in manish style, high collar, straps on cuffs, slash pockets. This coat has a belt across the back. Colors: Fawn or Olive. Sizes: 16 and 18 years Misses, and 34 to 42 bust measure. Lengths: 48 to 56 inches. Each

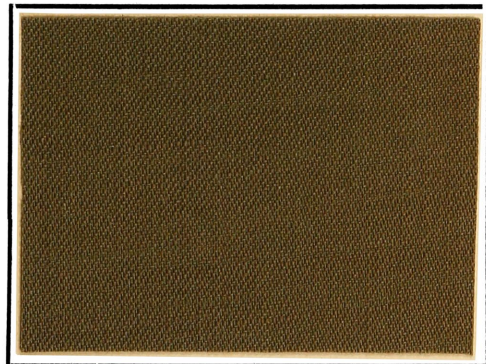




**D**



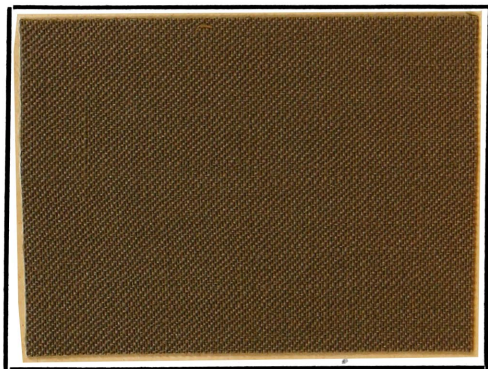
**G**



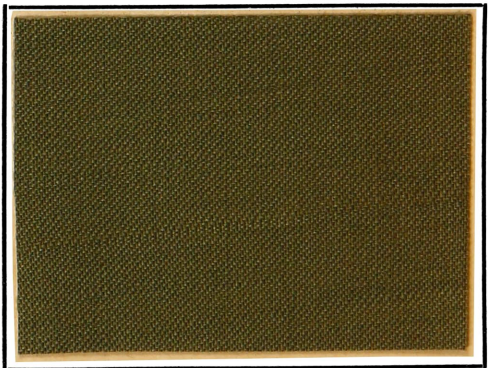
**LD1354C/8675.**—Wool Paramatta Waterproof Coat, made with set in sleeves, finished with fancy cuffs and straps, patch pockets, convertible collar (illustration showing different ways collar may be worn). Colors: Fawn or Olive. Sizes: 16 and 18 years Misses, and 34 to 42 bust measure. Lengths: 48 to 56 inches. Each.



**D**



**G**

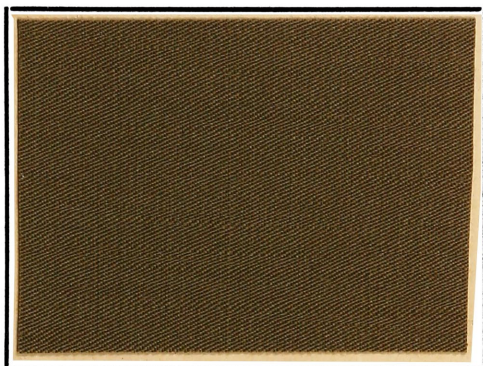


**LD1355C/8725.**— Heavy Wool Paramatta Waterproof Coat, made with Raglan sleeves, straps on cuffs, patch pockets. Collar may be worn either open or fastened high at neck. Belt across back. Colors: Fawn or Olive. Sizes: 16 and 18 years Misses, and 34 to 42 bust measure. Lengths: 48 to 56 inches. Each

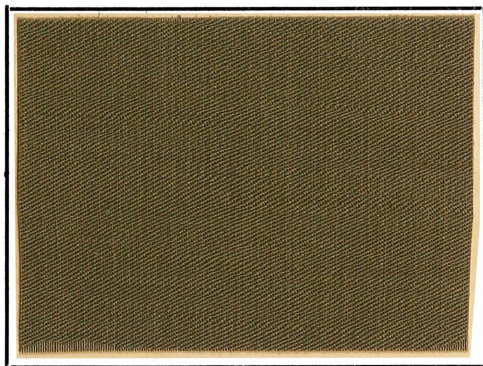




**D**



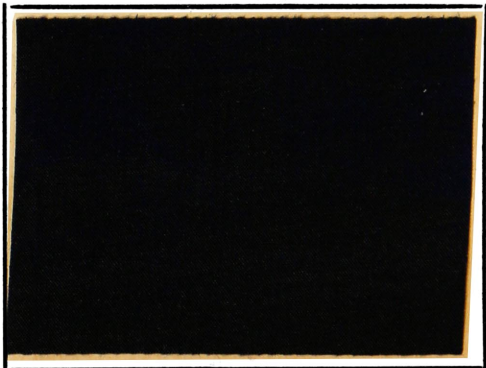
**G**



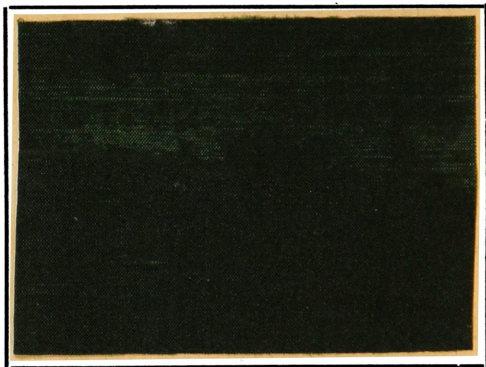
**LD1356C/9750.**—Silk Finished Paramatta Waterproof Coat, made with set in sleeves in manish style, straps on cuffs, high collar, slash pockets. Colors: Fawn or Olive. Sizes: 16 or 18 years Misses, and 34 to 42 bust measure. Lengths: 48 to 56 inches. Each



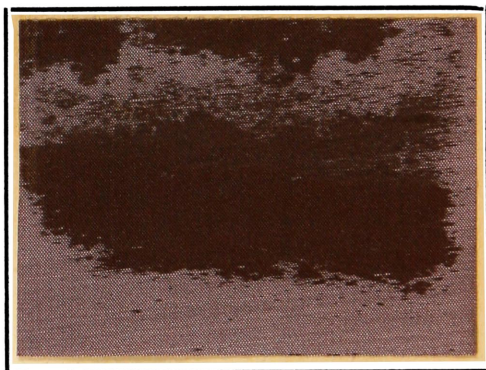
**B**



**G**

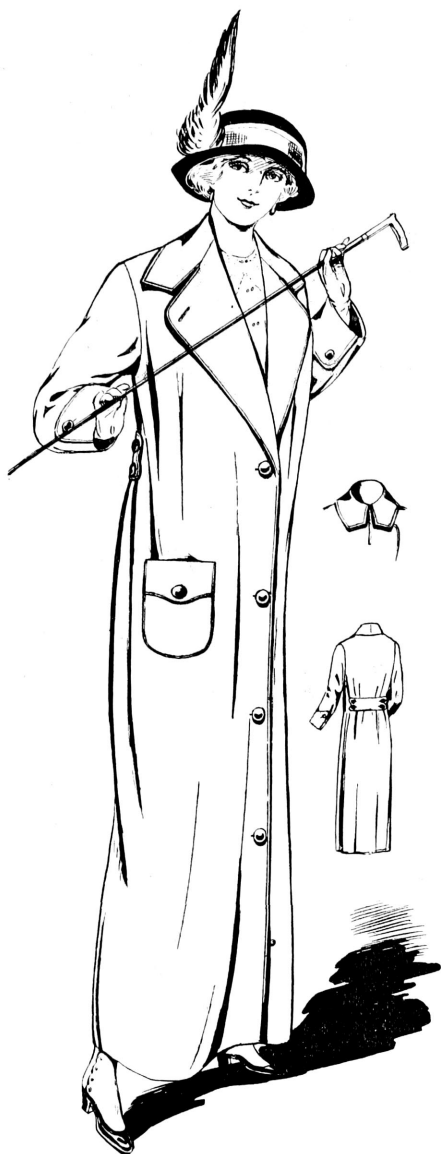


**D**

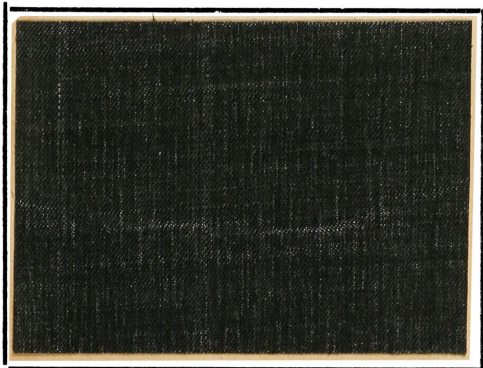


**LD1359C/9975.**—Silk Waterproof Coat, made with set in sleeves, high collar, inverted pockets with flap, belt across back. Colors: Grey, Green or Navy. Sizes: 16 and 18 year Misses, and 34 to 42 bust measure. Lengths: 48 to 56 inches. Each

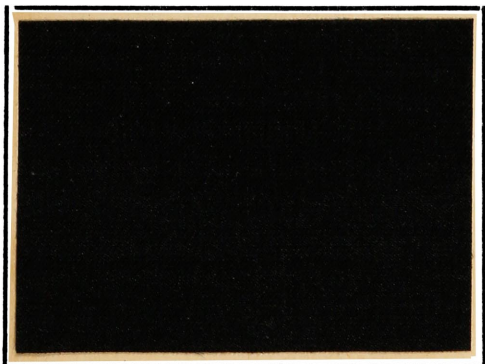




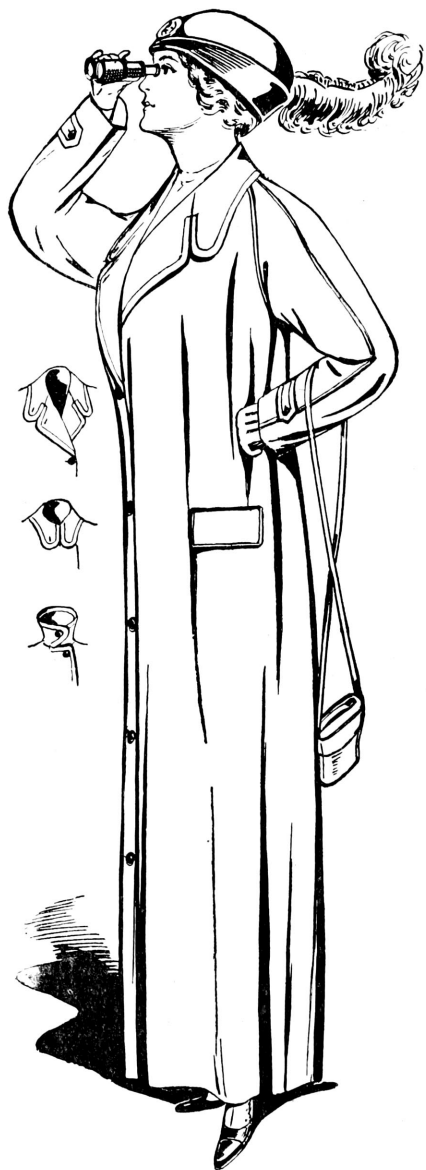
A



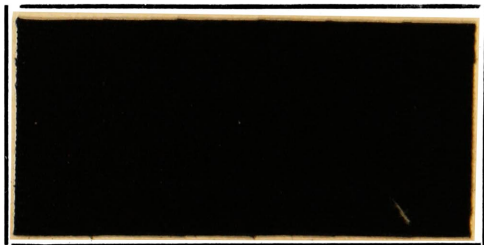
G



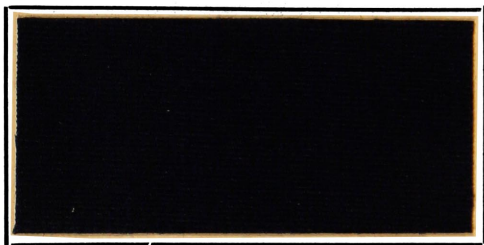
**LD1360C/21050.**—Silk Finished Waterproof Coat, made with set in sleeves, finished with fancy cuffs, patch pockets, collar may be worn either open or fastened high at neck, belt across back. Colors: Grey or Black. Sizes: 16 and 18 years Misses, and 34 to 42 bust measure. Lengths: 48 to 56 inches. Each



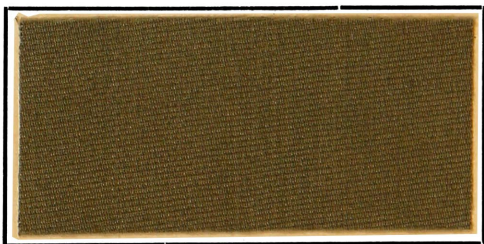
**Black**



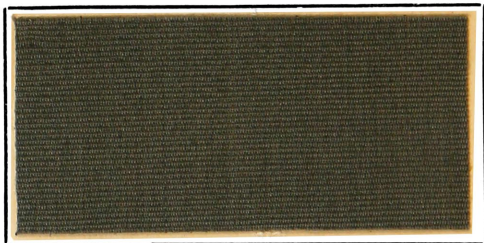
**B**



**F**



**G**

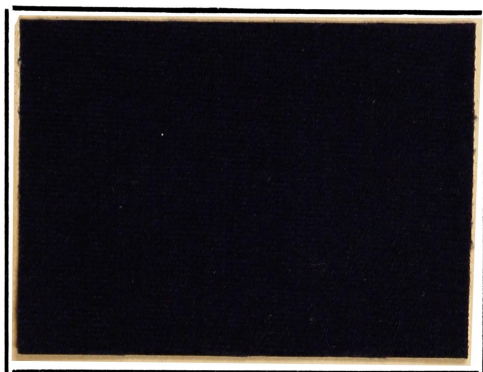


**LD1352C/5395.**—Poplin Waterproof Coat, made with Raglan sleeves, straps on cuffs, convertible collar, pockets with flaps. Colors: Fawn, Grey, Navy or Black. Sizes: 16 and 18 years Misses, and 34 to 42 bust measure. Lengths: 48 to 56 inches. Each

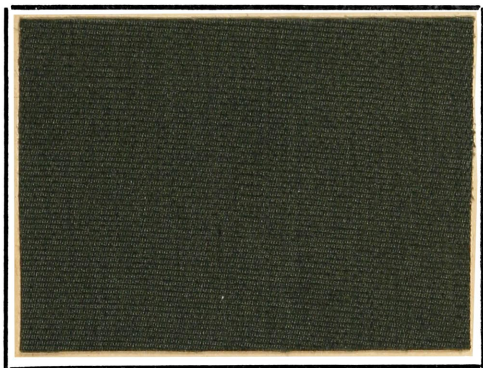




**B**

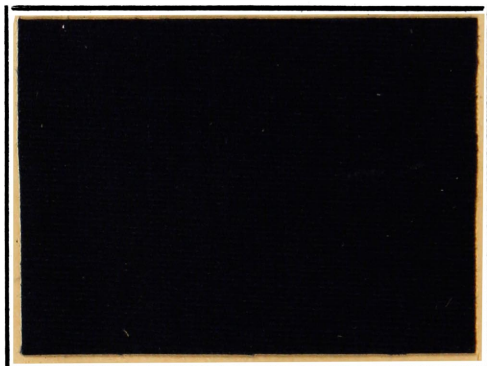


**D**

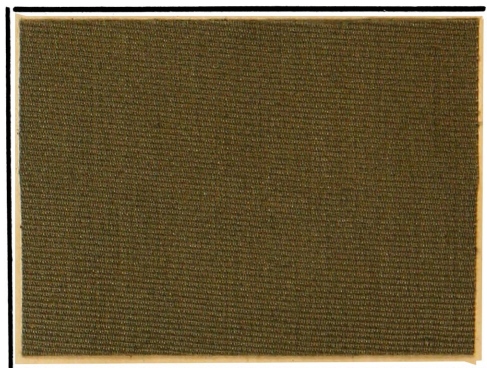


**LD1365C.**—Child's Poplin Waterproof Cape, made with high collar, detachable hood lined with plaid. Colors: Green or Navy. Sizes: 30in./4275, 33in./6255, 36in./5285. Each

**B**



**F**



**LD1366C.**—Child's Waterproof Coat, made with raglan sleeves, straps on cuffs, high collar, slash pockets. Colors: Fawn or Navy. Sizes: 27in./3275. 30in./5300, 33in./4325, 36in./5350. Each