

# BALMORAL CASTLE HOTEL



MORT HÉROÏQUE DE DOLYARD AU LONG SAULT

## MONTREAL, P.Q.

# INTERCOLONIAL RAILWAY OF CANADA

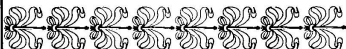
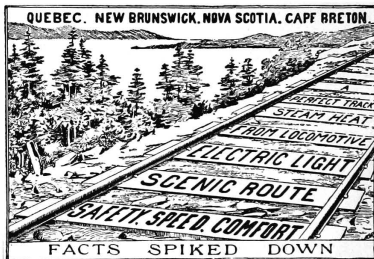
THE PEOPLE'S RAILWAY

The Popular  
Route

For  
Summer  
Travel



No route in America presents to  
Pleasure Seekers and Invalids so  
many attractions for Recreation  
and Healthful Climate. ❁ ❁



THE ONLY RAIL ROUTE BETWEEN ❁  
HALIFAX AND ST. JOHN ❁ ❁ ❁



Vestibule Trains, with Parlor, Sleeping and Dining Cars.

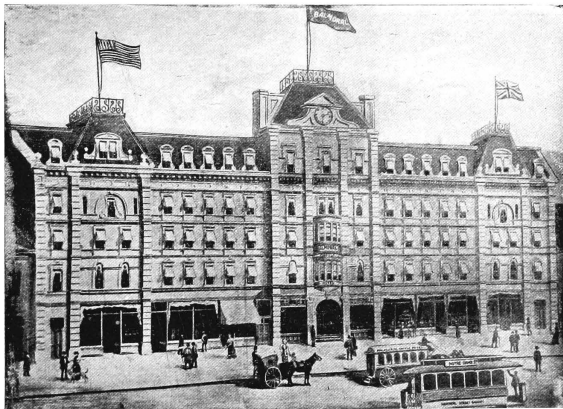
See description of our Summer Resorts, pages 50-51 in this Booklet.

Guide Books, Maps, Hotel Lists, Books of Summer Tours, Time Folders, etc., furnished free on application to

**H. A. PRICE**, District Passenger Agent,  
143 St. James Street, MONTREAL.

**JNO. M. LYONS**, General Passenger Agent,  
MONCTON, N.B.

**D. POTTINGER**, General Manager Canadian Gov't Railways, MONCTON, N.B.



# The Balmoral Castle Hotel

MONTREAL, Canada.

Is situated on Notre Dame Street, one block from Victoria Square, and five minutes from all the Steamboats and Railway Stations.



A. ARCH, WELSH,  
Proprietor.

Bell Telephone Main 1388

Conducted on the American and European plans, is palatial in appointment, yet home-like. Accommodation for 500 guests.

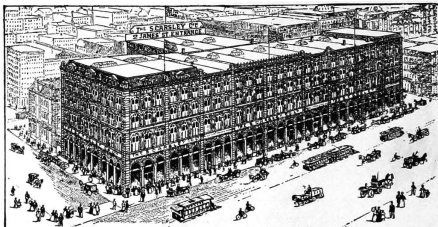
\*Electric lighted and steam heated throughout. Elegant lofty Dining Hall, Cafe and Billiard Room. Cuisine unexcelled under an experienced French Chef and personal supervision. Music from 5 to 8 p.m. Free Busses meet all trains and boats.

RATES—American Plan, \$2 to \$4. European Plan, \$1 to \$2.50 for each occupant.

\*The Steel Armoured Conduit System of Electric Wiring being used, the safest preventative in the world against fires.

# THE S. CARSLY COMPANY (Limited)

The  
Biggest  
Store.....



In Canada's  
Biggest  
City...

## DEPARTMENTAL STORE

Spacious and Elegant Dining and Refreshment Rooms

### SHOPPERS' DIRECTORY—DEPARTMENTS

Boots and Shoes	Jackets and Capes	Furs	Flannels	Rugs	Baby Linen
Glass and China	Boys' Clothing	Hosiery	Laces	Furniture	Shirt Waists
Sporting Goods	Men's Waterproofs	Children's Mantles	Cutlery	Silverware	Waterproofs
Indian Curios	Brushes	Flowers & Feathers	Prints and Corsets	Souvenirs	Costumes
Travelling Rugs	Men's Hats	Men's Clothing	Silks and Velvets	Notions	Curtains
Books, Stationery	Umbrellas	Toys	Carpets	Millinery	Bedsteads
Montreal Views	Ladies' Gloves	Lamps	Oil Cloths	White Wear	Bicycles
Souvenir Spoons	Men's Furnishings	Baskets			

The S. CARSLY COMPANY, Limited, 1765 to 1783 NOTRE DAME STREET  
105 to 113 ST. PETER STREET

OOO MONTREAL OOO

184 to 194 ST. JAMES STREET



Illustrated & Descriptive  
work of many

Popular Canadian  
Summer \* Resorts

and Historic Points

PUBLISHED BY  
THE  
**BALMORAL**  
CASTLE HOTEL  
\*  
MONTREAL  
CANADA

The management take pleasure in presenting this booklet, in a brief and concise form, not wishing to weary the reader, our effort being to describe the different points of interest by illustrations. \* \* \* \*

W.W. OGILVIE'S

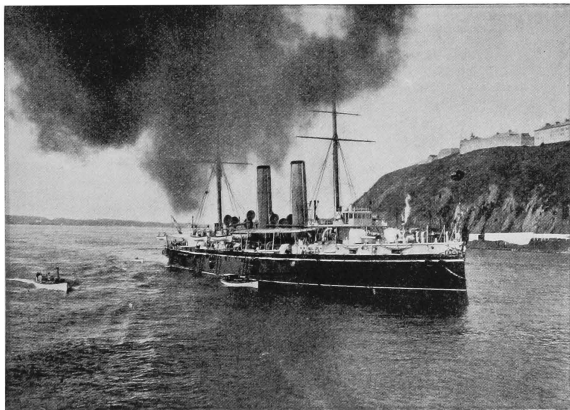
MILLS

DAILY  
Capacity  
9000 - BARRELS

*The largest individual  
Milling Business in the  
World*

THE LEADING  
BRANDS OF FLOUR  
IN CANADA  
ARE \_\_\_\_\_

OGILVIE'S HUNGARIAN  
AND \_\_\_\_\_  
OGILVIE'S GLENORA



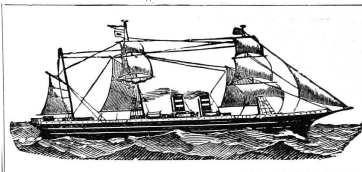
A VIEW OF THE MIGHTY ST. LAWRENCE RIVER.

H. M. S. "Crescent" passing the Citadel of Quebec. Up this historic cliff came Gen'l Wolfe's army on the eve of 12th of Sept., 1759, to fight the battle on the Plains of Abraham which gave to the British this great Dominion of Canada.

# ELDER, DEMPSTER & COMPANY

## Steamship Lines

MONTREAL  
TO...  
LIVERPOOL,  
LONDON AND  
BRISTOL,  
(Avonmouth Dock)



Weekly Sailings to  
Liverpool by the  
Elder, Dempster &  
Co. Beaver Line  
Passenger Steamers:  
Lake Superior  
Lake Huron  
Lake Ontario  
Lake Erie  
Lake Michigan

Large and airy outside staterooms—well lighted and ventilated. Spacious promenade decks. First-class table and excellent attendance. Doctors and Stewardesses on each steamer. Steamers sail from Montreal Wednesdays at daybreak. Passengers embarking Tuesday evenings any time after 8 p.m.

### REDUCED RATES OF PASSAGE

FIRST CABIN—from \$45 single fare, \$85 return fare. SECOND CABIN—to Liverpool or London—\$32.50 single fare, \$61.75 return. THIRD-CLASS OR STEERAGE—to Liverpool, London, Londonderry, Glasgow, Queenstown—\$22.50. Rail tickets to and from all points in connection with our ocean tickets at Special Low Rates.

WEEKLY SAILINGS TO LONDON direct from MONTREAL every SATURDAY by the large and new steamers: MONTENEGRO, \*YOLA, MONTAUK, +MOUNT ROYAL, MEMNON.

WEEKLY SAILINGS TO BRISTOL (Avonmouth Dock) by the following splendid steamers, every Thursday: MERRIMAC, + MONTFORT, + MONTEREY, \*MONTEAGLE, \*MONTROSE.

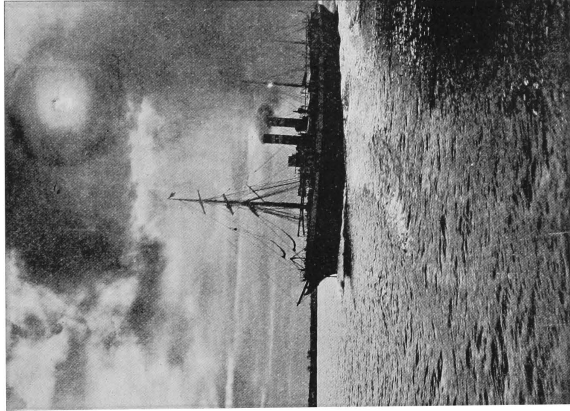
\*Steamers marked thus carry a limited number of First Cabin Passengers. These Steamers have splendid First Cabin accommodation for a limited number of Passengers at the following low rates:—Each adult \$40.00 to London or Bristol. Children under 12 years, Half Fare. Round Trip, double these rates, less 5 per cent. Return tickets by the Elder, Dempster Lines can be used either from London or Bristol or by the Beaver Line from Liverpool on payment of the difference in fare. Beaver Line Return Tickets can be used from London or Bristol if desired. No Steerage or Second Cabin carried on the London and Bristol services. Families and parties wishing to sail for these ports are afforded a splendid opportunity by these steamers of doing so comfortably and cheaply. Full particulars given on application.

## ELDER, DEMPSTER & COMPANY

MONTREAL

QUEBEC

80 YONGE STREET, TORONTO



MOONLIGHT SCENE ON THE BAIE DES CHALEURS.

An ocean steamship passing outward heavily laden with Canadian products for the European markets.

The  
BALMORAL  
CASTLE

CAFÉ AND  
CATERING DEPT.

Outside Catering receives Personal Supervision

We Supply a Handsome Service for Outside Work

Wedding Parties a Specialty

Banquets Supplied

Dining Hall  
Open  
Day and  
Night

Meals a la Carte ✽

Bell Telephone Main 1843 . . . .



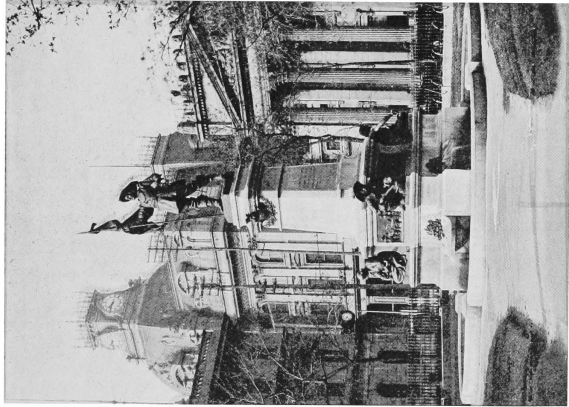
Bills of Fare with Estimates per plate furnished on application,  
including everything necessary for first-class entertainments, also

**Hall Accommodation for Select Parties**



Our Cooked Meats, Decorated Fowl, Fancy Salads, Ice Creams, Lemon Pie,  
Wedding Cakes, &c., &c., are the finest.

The above Made to Order, so our patrons can rest assured that they will be nice and fresh.



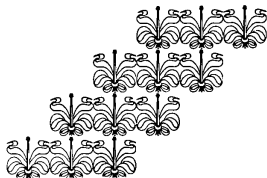
MONUMENT TO M. DE MAISONNEUVE, FOUNDER OF MONTREAL, 18TH AUG., 1642.

On the base of this magnificent bronze statue are the following plaques (see back and front covers) descriptive of historic epochs:  
"Mort heroique de Dollard au Long-Sault." "Prise de possession premiere messe."  
"Signature de l'acte de fondation de Ville-Marie." "Exploit de la place D'Armes."

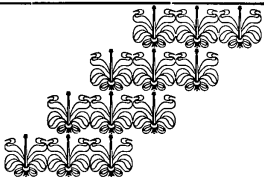


**Teas, Groceries,  
Provisions,  
Wines and Liquors**

 **THE LARGEST STOCK  
THE GREATEST VARIETY  
THE LOWEST PRICE**

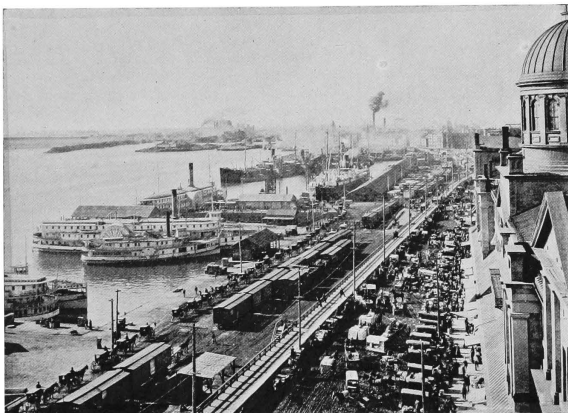


**HUDON, HEBERT & CIE., Montreal**



**AGENTS FOR**

- TALBOT FRERES, Bordeaux, French Conserves and Delicacies.**
- H. J. HEINZ CO., Pittsburg, Pickles, Sauces, Food Products**
- G. W. DUNBAR'S SONS, New Orleans, Shrimps, Oysters, Okra, Figs.**
- BOUTELLEAU & CO., Cognac, Fine Brandies.**
- VIOLET FRERES, Thuir, "Byrrh" Appetizing and Tonic Wine.**
- H. CORBY, Belleville, Distiller of Canadian Whiskies.**



VIEW OF A PORTION OF MONTREAL HARBOR FRONT

From Bonsecours Market, showing Richelieu and Ontario Navigation Company's Line of Steamers and the Ocean Greyhounds. In the distance can be seen W. W. Ogilvie's mammoth flour mill.

# THE MEDICAL HALL

## BELFAST GINGER ALE FACTORY

MAKERS OF THE  
ORIGINAL

Belfast Ginger Ale and Soda  
Waters ❁ ❁ ❁

ALSO OF...

"Campbell's Quinine Tonic  
Water" ❁ ❁ ❁

"Cherry Phosphate and Kola  
Nectar" ❁ ❁ ❁

---

**KENNETH CAMPBELL & CO.**  
MONTREAL

THE MEDICAL HALL GINGER ALE FACTORY  
84 ST. URBAIN ST.,  
MONTREAL.

Messrs. Kenneth Campbell & Co., in the sixties, were the Canadian Pioneers of the Ginger Ale business. Their aerated beverages at once acquired a reputation never approached by any other maker.

They retired from the trade about the year 1880, and the Medical Hall Brand disappeared. We are again in the field, however, and at the above address are now manufacturing the ORIGINAL celebrated

Medical Hall Belfast Ginger Ale  
" Extra Soda Waters  
" Champagne Cider  
" Vichy and Potash Waters

to which we have added our new

Medical Hall Rideau Mineral Water  
" Cherry Phosphate

an efficient Brain and Nerve Tonic.

Medical Hall Quinine Tonic Water  
a general Tonic for the system, an appetizer, and prophylactic against Grippe and Malarial disorders.

Our long experience as Pharmaceutical Chemists guarantees the purity and general excellence of our products.

PLEASE NOTE—We are the only makers of the Original Medical Hall Brand of Aerated Waters.

**Kenneth Campbell & Co.**  
84 ST. URBAIN STREET



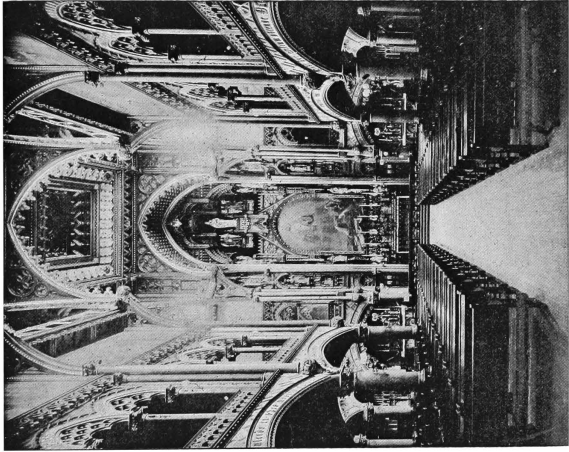
NOTRE DAME CATHEDRAL.

Built in Gothic style, of Montreal limestone, the towers are 227 feet high, in one of which hangs Gros Bourbon, one of the largest bells in the world, 29,400 lbs. The capacity is 15,000 people.

# Maritana Cigars...



MANUFACTURED  
BY  
J. RATTRAY & CO.  
MONTREAL




SACRED HEART CHAPEL.

In rear part of Notre Dame Cathedral is a masterpiece of wood carving and foreign frescoes, containing wonderful paintings of biblical subjects.

The   
**Montreal Brewing**  
**Company**

Established 1840  
Incorporated 1897

  
Authorized Capital,  
. . . \$150,000.00

**BREWERS and BOTTLERS**

Pure Ales are Healthful  
Medical men recommend the "MONTREAL"

The  "MONTREAL"  
ALES

ARE \_\_\_\_\_  
**SPARKLING** NO . . . .  
**and CREAMY** SEDIMENT



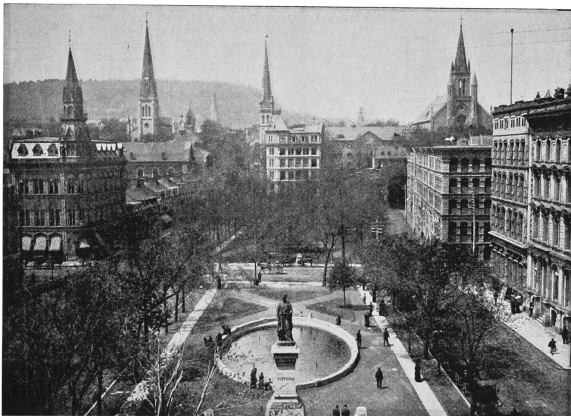
The Favorite Brand with those who are judges

The only Brewery in the Province Brewing with Artesian Water.

Artesian Well 502 feet deep . . . .

THOS. CUSHING, President and Manager.






VICTORIA SQUARE, MONTREAL.


Situated in the heart of the City, named after Her Majesty Queen Victoria, to whose honor is erected a magnificent Bronze Statue. The Balmoral Castle Hotel is located within a stone's throw of this beautiful park.

DIRECT  
IMPORTER



Marc. A.  
**Brodeur**

1858  
Notre Dame  
Street . .  
(Near Victoria Square)  
**MONTREAL**



EXCLUSIVE STYLES  
AND . . . . .  
MATERIALS

Fashion-  
able **Tailor**

FOR GENTLEMEN

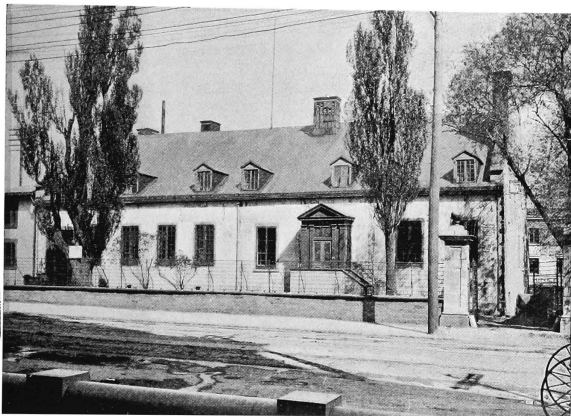


Gentlemen's Suits to Order  
on Short Notice to . .  
Accommodate Transient  
Visitors.

Dress Suits to Hire

Telephone, Main 2681





CHATEAU RAMSEY, MONTREAL.

A spot dear to American tourists, for within its walls in 1775, General Wooster resided; and in 1776, the traitor Arnold and the Commissioner of Congress, Franklin, Chase and Carroll here held Council.

THE  
JOHN L.  
CASSIDY CO. }  
LIMITED OOOOOOOOO

IMPORTERS  
OF

CHINA  
POTTERY  
AND OOOOO  
GLASSWARE

FROM ALL COUNTRIES

Offices and Warehouse

339-341 ST. PAUL STREET

Four City Branches

2503 ST. CATHERINE ST. WEST  
1471 ST. CATHERINE ST. EAST  
225 ST. LAWRENCE MAIN ST.  
1088 ST. LAWRENCE MAIN ST.

ALSO

110 Sparks St., Ottawa

MONTREAL

The largest  
Retail Fur  
Establishment in  
the World...

Grand Display  
of Indian  
Curiosities  
OOOOOOOOOO



Chs. Desjardins & Cie.

1533 to 1541 St. Catherine Street

MONTREAL



Exhibition of FURS going  
on all the Summer OOO



Our Seal  
Garments are  
World  
Renowned..

OOOOOOOOOO  
Your Visit  
Respectfully  
Solicited



LA SALLE'S HOUSE

Lower Lachine Road, Montreal. Here lived Robert Cavalier, Sieur de La Salle, 1670; to him Americans and Canadians owe an enduring memory, for in his masculine figure we see the pioneer who guided us to our richest possession, and who was also the founder of Chicago.

J. B. & N.  
**= Bourassa =**  
Purveyors



Messrs. J. B. & N. Bourassa  
 will always furnish to their  
 many Customers the best  
 MEAT that can possibly be  
 found in the Market. . . .

**Always on hand, Salted  
 Beef and Tongues**

. . . Delivered at Residence . . .



**Stalls Nos. 43 and 45** TELEPHONE  
**Bonsecours Market** 691

Smoke  
**Chamberlain**  
 . . . . Cigars  
 and Cigarettes..



Manufactured by

**J. M. FORTIER,**  
 Montreal





MARKET DAY, JACQUES CARTIER SQUARE, MONTREAL.

Admiral Nelson's Monument in the distance—to the right is a portion of the City Hall, and on the left, part of the Court House; this is a scene which, on Tuesday and Friday in the early morning, is well worthy of a visit.



MISS J. LADSOUS

MISS E. KESSLER




O. LADSOUS & CO.

Ladies'  
Tailors

1863 NOTRE DAME STREET  
MONTREAL

Canada's Largest Ice Dealers



Joseph  
Quinn   
& . . .  
Company

Wholesale and  
Retail . . .  
Dealers  
in . . . . .  
and  
Shippers  
of . . . . .



Pure St. Lawrence Ice

Main Office : 104 William St., MONTREAL

Used exclusively in this Hotel.



LACHINE RAPIDS, MONTREAL.

A view of the celebrated Chief John and crew of the Caughnawaga Indians shooting the rapids with Col. Frank Bond and Frank Leslie's artist. This daring feat was accomplished at great risk of life in the year of the Courtney-Hanlan boat race.

... OLD...

## ST. GEORGE

1883 Notre Dame St.  
Opposite the Balmoral....

### Dry Goods and Millinery....

We buy for spot cash and  
secure all discounts.....

We sell for spot cash and  
so have no bad debts to  
make up for.....

That is the reason why we  
are....

The Cheapest Store in  
the City for first quality

**DRY GOODS  
CARPETS AND  
OILCLOTHS**

P. Poulin



P. Ollion



ESTABLISHED 1865

## P. Poulin & Co.

WHOLESALE  
AND RETAIL

Poultry

Game and

Eggs...



**BONSECOURS MARKET  
MONTREAL**

Phone, Main, 1003



WHEN YOU  
ARRIVE IN MONTREAL  
VISIT \* \* \* \*



## N. W. Tanguay's

Gents' Furnishing  
Establishment

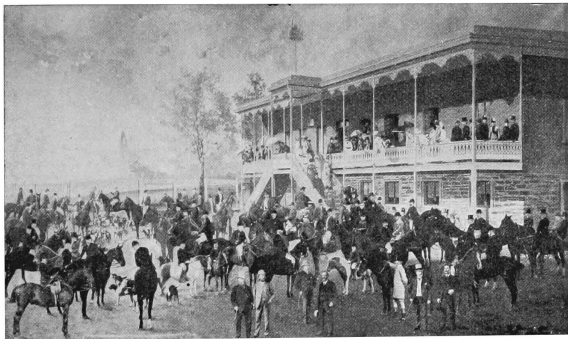


Balmoral Hotel Bldg.

Selected  
Stock from  
European Houses

Maker of Mackintoshes  
and Waterproof Garments  
to Order.

Tel., Main, 106



MONTREAL HUNT CLUB MEET.

One of the social events of our autumn season. Here are gathered many of our leading city magnates, prior to their cross-country fox hunt.

GEO. S. WAIT

JOHN M. TAYLOR

Established 1857

# GEORGE WAIT & CO.

..... MONTREAL

## Commission

Merchants

WHOLESALE DEALERS IN

CHOICE BUTTER, CHEESE,  
PRODUCE,  
PORK, DRIED APPLES,  
BEANS, FLOUR,  
PROVISIONS,  
EGGS, POULTRY,  
&c., &c.

592 ST. PAUL STREET AND 49 WILLIAM STREET,  
Near St. Ann's Market.

BELL TELEPHONE, MAIN 8.  
MERCHANTS " 570.

ESTABLISHED 1870

TELEPHONE 519

# Geo. F. Phelps

IMPORTER,  
WHOLESALE AND RETAIL  
DEALER IN

Oysters, Fish, Game,  
Poultry, etc.

56 VICTORIA SQUARE,  
MONTREAL

OFFICE, 36 PRINCE ST.  
YARDS, PRINCE AND DUKE STS.

TELEPHONE  
814

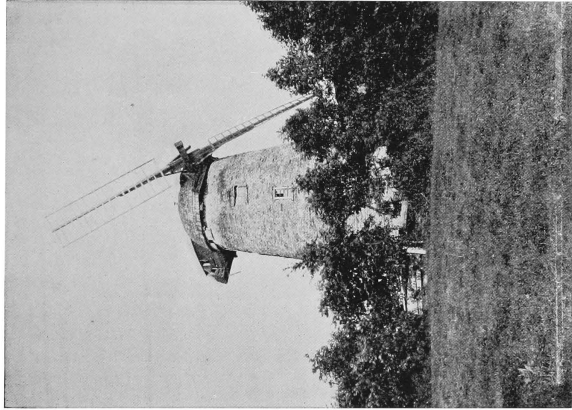
# L. Cohen & Son

MONTREAL

SCOTCH,  
CAPE BRETON,  
AMERICAN,  
WELSH . . . . .

# COAL

Hard and Soft Wood  
and Charcoal



OLD WIND MILL, LOWER LACHINE ROAD, MONTREAL, 1670.

This old landmark is closely identified with the early history of America, and was patronized by Lemoine, the founder of New Orleans; D'Huit, the founder of Duluth; Cadillac, founder of Detroit; La Salle, and many other historic personages.

ESTABLISHED 1831 

 John Henderson  
& Co. 

**..FURRIERS..**

No. 229 St. James Street  
MONTREAL

*We carry the largest and richest  
FUR STOCK in the Dominion. Visitors  
to Montreal are invited to call and in-  
spect our Fur Display.*

*Show Rooms open at all seasons.*

*Correspondence solicited from Fur  
buyers at a distance.*

**JOHN HENDERSON & CO.**



BELL TELEPHONES } Office 1273 and 873.  
Retail St. Lawrence Market, 1356.

 JAMES HARPER   


*Pork Packer*

 AND 

**CURER OF HAMS  
AND BACON**

 MANUFACTURER OF 

**PURE LARD AND A STRICTLY  
PORK SAUSAGE A  
SPECIALTY**

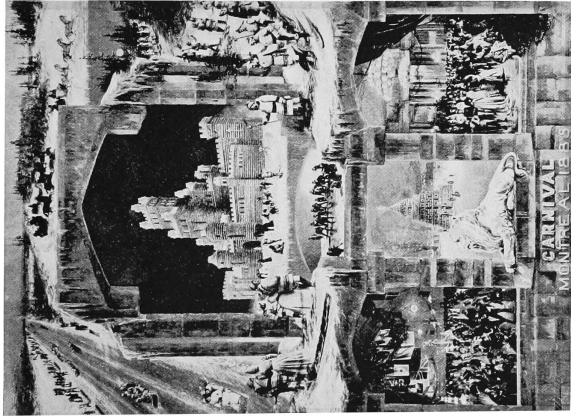
OFFICE AND WAREHOUSE: 18 ST. PHILLIP ST.

 Retail: 24, 25, 26, 27 St. Lawrence Market, 

**MONTREAL**

A TRIAL ORDER IS SOLICITED





WINTER SCENES, MONTREAL.

Nowhere is there a country with such a short, bracing and invigorating winter, and the above view will give you an idea of why you should visit our fair city during the months of January and February—when all nature seems to rest.

We Grind by Wind  
and Power and can  
Beat the World . . .



Coffees,   
Spices, etc. . . .

MADE BY   
THOS. BARROW  
LONGUEUIL, P.Q.





MOUNT ROYAL PARK, MONTREAL.

One of the features of our winter outings is a drive through this magnificent park, where a fine view of the entire city is obtained.

**Select  
Imported Goods**

MADE UP ON SHORT NOTICE BY

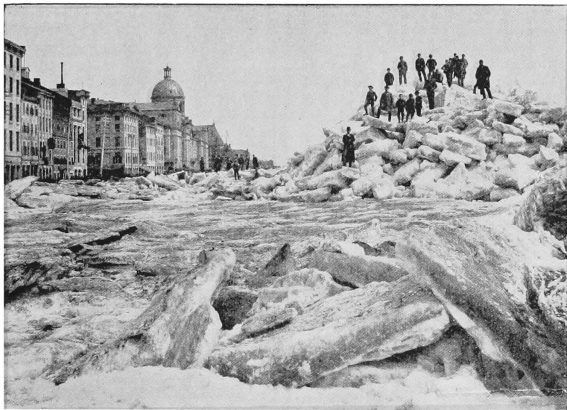
BELL TELEPHONE  
MAIN 106

*L. Brunelle.*

**Custom Tailor**

*Balmoral Building,  
Notre Dame Street,*

*Montreal.*



ICE SHOVE, MONTREAL.

The above illustration will give an idea of the entire river front after the ice begins to break up in the early spring.

# J. PALMER & SON

1745 NOTRE DAME

A Bazaar for Women. The best known and most successful  
**Hair Store** in Canada.

Wig Making. Hair Dressing. Manicuring. Shampooing.

Hair Dyeing in the most approved manner.

The finest and newest line of Hair  
Goods and Toilet Preparations.



J. PALMER & SON

See our  
Windows

# THE RUSSELL, OTTAWA, ONT. HOTEL VICTORIA, AYLMER, QUE.




F. X. ST JACQUES,  
PROPRIETOR

W. T. VIRTUE.

ESTABLISHED 1861

**J. VIRTUE & SON...**

Bottlers of 



TELEPHONE  
UP  
1250



W. Dow & Co.'s  
**Ales**  
and . . . . .  
**Porter**

Also 

.. **Apple Cider** ..

COUNTRY ORDERS  
PROMPTLY AND CAREFULLY  
ATTENDED TO . . .

19 AYLMER STREET  
MONTREAL . . . .

**Sohmer**  
**Park...**

Canada's  
Favorite . .  
Pleasure  
Resort . . . .

MONTREAL

Open daily (1 to 12)

**Grand & Comic Opera**  
**Artists in Burlesques**

on the Best Operas

**Ballet** OF TWENTY  
HANDSOME LADIES

**Hungarian** (from Vienna,  
**Orchestra** The Best on the  
Continent

LAVIGNE'S BAND

**RIVER PROMENADE**

Beautifully Lighted with 500 Electric Lights

**Best European and American**  
**Vaudeville Artists**

Admission **10c.**

N.B.—ALL STREET CARS GO  
TO SOHMER PARK

ESTABLISHED 1855

APPLES AND  
SMALL FRUIT  
A . . . .  
SPECIALTY

*Kart & Suckwell*

Fruit Merchants

MCGILL ST.,

MONTREAL

Ask for ❁ ❁

Labatt's of London  
INDIA PALE Ales

STOUT AND  
PORTER

For Sale at the Balmoral Castle Hotel

Frank W. Slater

Ben. Slater

“Slater's”  
Shoe Store

*We are the ONLY SLATERS  
in the Retail Shoe Business  
At the Old Stand Only*

No. 249 St. James Street



Merchants Tel. 704

Bell Tel. Up 1240

## F. Lefebvre & Co.

House, Sign  
and...  
Decorative

**P** **PAINTERS**



Paper Hangings and  
Window Shades.....

  
LINCRUSTA WALTON  
A SPECIALTY

  
  
104 Mansfield Street,  
MONTREAL

## ROWAN'S

Not our Motto  
our Goods are  
THE BEST....

To be had at the  
leading Grocers  
and Hotels  
throughout the  
Dominion of  
Canada....



Ginger Ale . . . .  
Soda Water . . .  
Cream Soda . . .  
Cider and . . . .  
Caledonia Water

ROWAN BROS. & CO.

618-620 Beaudry St. - Montreal, Can.  
TEL., BELL EAST, 203

## The . . . . *Balmoral Bakery*

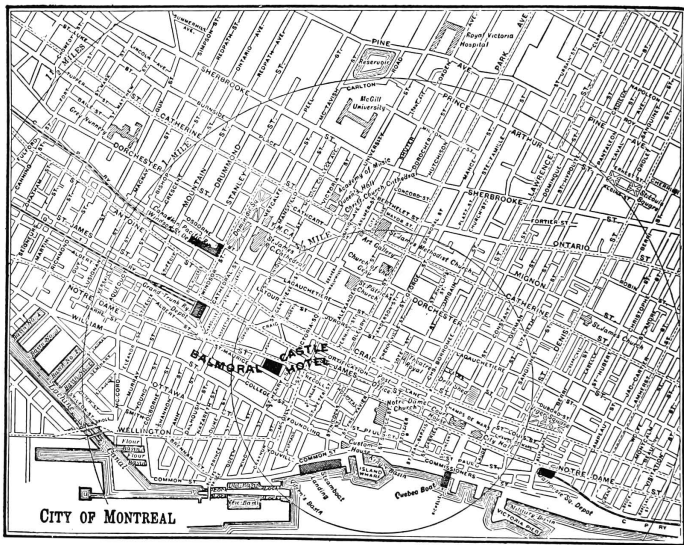
248A RICHMOND STREET

*Montreal, Que.*

*Percy M. Welsh, Proprietor.*

*Fancy Breads  
a Specialty..*

*Bell Telephone  
8567.*





BALMORAL CASTLE HOTEL OFFICE

# Points OF INTEREST IN AND ABOUT MONTREAL.....



Chateau-de-Ramesay, Notre Dame St.  
City Hall and Court House, Notre Dame St.  
Royal Victoria Hospital, Pine Avenue.  
Montreal General Hospital, Dorchester St.  
McGill University—Library and Museum.

Laval University.  
Board of Trade Building.  
Art Association.  
Natural History Museum.  
Place d'Armes and De Maisonneuve Monument.

Bank of Montreal.  
St. Helen's Island.  
Mount Royal Park, elevator to top.  
Victoria Bridge.  
Notre Dame Church and new Chapel in rear.  
(elevator to top of towers).

Nelson's Monument.



Church of the Gesu.  
St. James' R. C. Cathedral, Dominion Square.  
Notre Dame de Lourdes.  
Grey Nunnery.  
St. James' Methodist Church.  
St. Patrick's Church.  
Christ Church Cathedral.  
Bonsecours Church, and Market.  
Post Office.

Custom House.  
Montreal College and Towers.  
Balmoral Castle Hotel.  
Water Works.  
Mount Royal and Cote-des-Neiges Cemeteries.

Drive around the Mountain.  
Drive to Lachine and Hydraulic Works.  
Eden Musee and Odeon.  
Sohmer Park.





DINING ROOM

Ask for...



A Safer Drink  
has never yet  
been brewed..



# Watson's Dundee Whisky

Undoubtedly  
the  
Finest  
Imported...



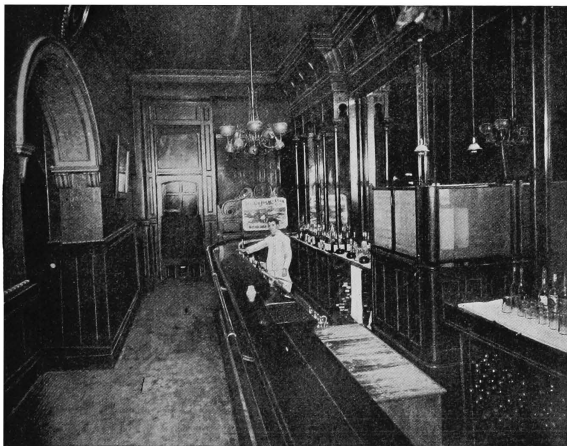
Henry J. Chard & Co.

AGENTS FOR CANADA

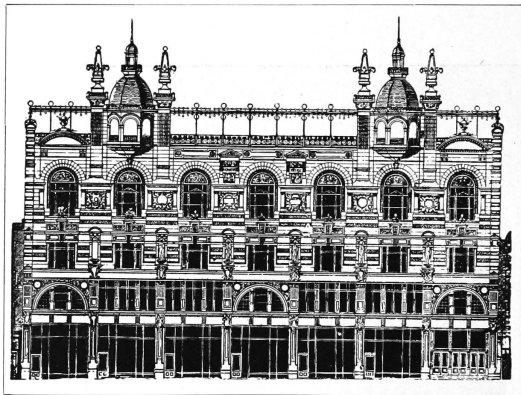
28 HOSPITAL ST.

MONTREAL





WINE ROOM



MONUMENT NATIONAL BUILDING

# Edén Musée

Odeon

Around the  
World

206 St. Lawrence St.,  
Montreal

## Edén Musée

Besides numerous Wax Figures there are over 1,000 Curiosities to be seen, covering 18,000 feet of floor room.

Open Daily from 9 a.m. to 10 p.m.  
Sundays " 1 p.m. " 10 "

ADMISSION 10 CENTS.

## Around the World

50 Views of Different Cities and  
Monuments of the World.  
Changes every week.

ADMISSION 10 CENTS.



## Odeon

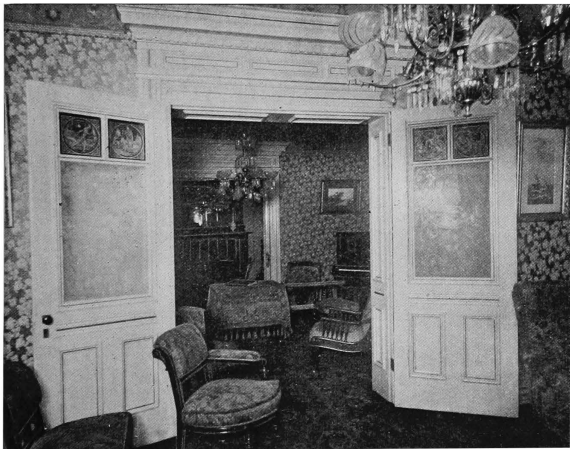
Animated Pictures, Graphophone  
Grand, etc.

Daily Performances from 2 to  
10 p.m.

ADMISSION 10 CENTS.







LADIES' PARLOR

ACETYLENE GAS  
THE WONDER OF  
THIS CENTURY..



Private Plant  
Absolutely  
Practicable,  
Safe and  
Reliable\*\*



HAVE YOU  
SEEN THE..

# New Acme Sunlight Generator

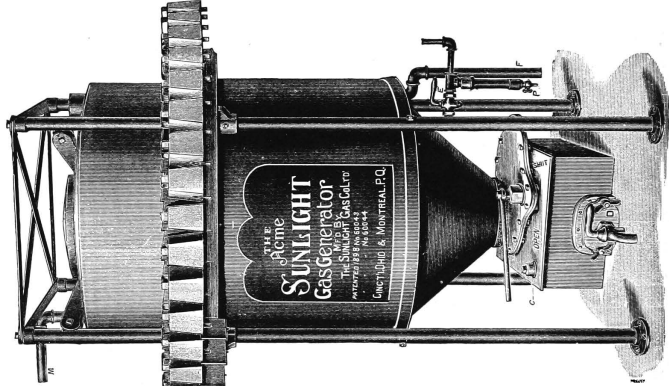
Baumgarten's Patent

**AUTOMATICALLY  
MANUFACTURED...  
COSTS 40 CENTS  
PER 1000  
CUBIC FEET...**

OFFICE AND FACTORY:  
No. 1 Little St., Antoine St.,  
Cor. St. James St.,  
MONTREAL, Canada.

By this the only  
Generator which can give  
proper results on the  
consumption of  
Acetylene as follows:

**Candle Power  
Hours for  
ONE  
DOLLAR**



Incandescent Electric Light . . .	1600 C.P.H.
Illuminating Gas . . . . .	2560 C.P.H.
Gasolene . . . . .	3200 C.P.H.
Acetylene . . . . .	6700 C.P.H.



EMERALD LAKE.

On the Canadian Pacific Railway, in the Rocky Mountains. This is one of the most perfect shadow photos ever taken.

<p>Summer Resorts</p>
<p>ON THE LINE OF</p> <p>The  Intercolonial Railway</p>

## Land of Fish and Game

**S**TARTING from Montreal, the Intercolonial takes the shortest and most direct route to Quebec, the ancient capital, and thence follows the south shore of the Lower St. Lawrence among picturesque French villages,

reaching such well known summer resorts as Riviere du Loup, Cacouna and Little Metis. Beyond these it passes through the famous Metapedia Valley and enters upon the great salmon fishing region. This includes such noted rivers as the Metapedia, the Restigouche, the Nepisiguit and Miramichi, as well as the rivers in Gaspé. Entering New Brunswick at the Restigouche, the railway passes along the shore of that beautiful and spacious haven, La Baie de Chaleur. On the

opposite side of this wonderful natural harbor is seen the Gaspé Peninsula, the land of great fishing and of striking scenery, which is of itself well worthy of a visit. Dalhousie and other places on the New Brunswick side of the Bay have great advantages for sea bathing, and are in other ways most attractive as summer resorts. Continuing along the railway, Moncton is reached, the place were the strange tidal phenomenon, known as the Bore, is seen to better advantage than in any other part of the Bay of Fundy. From this point one may make a choice as to the order in which he will see the respective attractions of Prince Edward Island, New Brunswick and Nova Scotia.

Prince Edward Island is reached from the Intercolonial by taking that line to Point Du Chene, 19 miles from Moncton, and thence by a fast and finely appointed steamer across the Strait of Northumberland to Summerside; or the Island may be reached from Nova Scotia by steamer from Pictou to Charlottetown. Of the Island itself, the Garden of the Gulf, no brief account can give an adequate idea. It is one of the fairest and most fertile portions of Canada, and one delightfully adapted to summer outings, with an abundance of surf bathing, trout fishing and sea fowl shooting. The best of country and seaside board may be had on the Island at very moderate rates. From Prince Edward Island, or from Pictou, N.S., one may visit the Magdalen Islands, that curious group in the middle of the Gulf of St. Lawrence, so little known to the great bulk of the travelling public.

West from Moncton the Intercolonial runs 89 miles through a flourishing and settled country to St. John, the commercial capital of New Brunswick and the winter port of Canada for transatlantic trade. The summer climate of St. John is delightfully cool, and the city has many attractions for visitors. A steamer voyage on the river to Fredericton reveals some of the finest scenery of the kind in America.

From South from Moncton the railway enters Nova Scotia and runs through a most interesting country to Halifax, the famous military and naval station of North America. If desired, the line to Cape Breton may be taken before reaching Halifax, but as a rule the latter city is first visited and made the point of departure. There is much in and around Halifax to attract and interest the visitor, both in the way of the fortifications and war vessels and in the places of interest which the city possesses of itself. The surroundings are especially inviting.



## BEAUTIFUL CAPE BRETON

---

**R**UNNING easterly from Truro is the portion of the Intercolonial which goes to the Strait of Canso, and the latter having been crossed, the Intercolonial is continued through Cape Breton along the wonderful inland sea known as the Bras d'Or, to Sydney, whence it is but a short railway journey to the ruins of historic Louisburg. From Sydney, too, fast steamers run to that hitherto almost unknown country, Newfoundland, making the passage in a few hours.

Cape Breton is the veritable paradise of the tourist, and much as has been said in praise of it the half has not been told. No brief account can give any true conception of the many and diverse attractions of this beautiful country, the fame of which has reached to all parts of the earth. Much as has been written of the Bras d'Or and of such places as Baddeck and Whycocomagh, they are but a portion of what is worth seeing, and which once seen will not be forgotten.



## Summer Resorts

on the line of the

Railway  
System

Grand  
Trunk

Among the

30,000  
Islands

of the  
Georgian  
Bay

"Where the north star shines most clear,  
And our devious course we steer  
'Mong the isles of the Georgian Bay."

ONE of the most delightful and beautiful trips that may be taken in Canada, and not surpassed in any other country, is through and among the islands of the Georgian Bay, that great arm of Lake Huron lying west of the Muskoka Lakes, and which is easily accessible from Midland or Penetang, two points on the GRAND TRUNK RAILWAY SYSTEM, in which lie an extensive archipelago of more than 30,000 islands, and which bears the name of his late Majesty, King George the Third. In general character they are similar to the Thousand Islands situated in the St. Lawrence River, but of course, are infinitely more numerous. This magnificent bay has no equal on the American continent. The steady increase of tourists to this locality is alone proof that it has become the most popular resort on the Inland Lakes. It is impossible to describe this wonderful waterway with

any degree of satisfaction, as nature has been so generous in beautifying and adorning it with a lavish hand and has gifted the region with gorgeous scenic effects, rugged promontories, charming summering places on beautifully wooded islands, intricate channels and narrows, that it is one grand panorama of vistas from beginning to end. Islands of every shape and size, from those of but a lone rock to some of hundreds of acres in extent, are beheld on every hand, most changeable in their variegated foliage and moss-covered rocks, peeping out of the blue depths of clear crystal-like water, for the inspection of the beholder.



**MUSKOKA LAKES.**—A region of unsurpassed natural beauty is Muskoka, a land where health and pleasure go hand in hand, where freedom abounds, and where the hand of man is not greatly in evidence, but nature's untouched beauty is beholden on every side, a picturesque wilderness of ever-changing loveliness, among the "Highlands of Ontario." To one fond of the woods, the rippling brooks, the rivers and lakes—and who is not?—the Muskoka Lakes take precedence over all other resorts. This vast region, known as the Muskoka Lakes District, lies in the northern part of Ontario, east of the Georgian Bay, and north of Lake Ontario, and the point of embarkation for the trip on the lakes is situated 112 miles from Toronto. The total area of the district covers a large tract of that portion of the country, and some idea of its extent may be had when it is known that some 800 lakes and rivers are embedded within its boundaries.

This incomparable range of waters, studded over a vast area, like crystalline gems set with emeralds, in one of those gorgeous pictures of nature which defy the power of creative genius to depict, and baffle the skill of brightest imitation, is without doubt, the tourists' Mecca PAR EXCELLENCE. The region is replete with historical interest, as being the home of the ill-fated Hurons. Now all is forgotten, the scene is changed, and it is only now and then, in a reflective mind, that the name of a village or lake will awaken the memory of some Indian legend, "dark with phantoms and shapes of wild enormity."

## Summer Resorts

On THE RICHELIEU AND ONTARIO  
NAVIGATION CO.'S LINE . . .



QUEBEC, 66,000. Is 172 miles below Montreal, on the River St. Lawrence. Steamers of this Company leave every day, connecting here with Toronto boat.

**BAIE ST. PAUL**, on the left, and then Isle aux Coudres is passed on the right.

**LES EBOULEMENTS**, with its little village and church, high up on the hill.

**MURRAY BAY**, the most popular watering place on the north shore.

**CAP A L'AIGLE**, another growing resort. From Cape Tourment all the way to Murray Bay, the steamer keeps close to the precipitous shore, which rises in places to a height of two thousand feet, and is clothed with a thick, warm growth of evergreen, varying in hue from the lighter color of the cedars to that of the deep, dark-shaded pines. Many prefer this portion of the trip to the Saguenay itself, as being equally grand and at the same time brighter. At Murray Bay and beyond, look out for porpoises. At Cap a L'Aigle the river is eleven miles wide.

**RIVIERE DU LOUP** is a favorite watering place. It is a prosperous town of 7,000 people, and a divisional point on the Intercolonial Railway. The Temiscouata Railway, from this point to Edmundston, on the C.P.R., forms the short line connection to St. John, N. B. Six miles east of this on the south shore, is the village of Cacouna, the most important watering place on the Lower St. Lawrence, with its excellent hotel, the St. Lawrence Hall. Leaving Riviere du Loup, the steamer again crosses to the north shore, where

**TADOUSAC**, twenty-two miles distant, at the mouth of the Saguenay River, is reached. Tadousac—Cree Tatoushak—signifies "Nipples."—Jacques Cartier anchored here under the shelter of Hare Island. It was also the centre whence the first Jesuit Fathers started for the Saguenay, Mistassins and Hudson Bay. The Montagnais Indians included the Papinachoris (or "Ever Smiling"), whose gentle nature has been ascribed to the whole Montagnais branch, Ounescapian, Pickougamians, Tadousacians, Betsiamites, Chicoutimians and Mistassins. They were tall, straight, strong, agile, and fond of fun; honest as compared to the Hurons, who were thieves and nomads, living exclusively by fishing and the chase, as distinguished from the Iroquois, who built and fortified villages and tilled the ground. There is a large and very excellent hotel owned and kept by the Richelieu and Ontario Navigation Company. Boating, golf, fishing and other amusements are available. Among the cottages is one formerly owned by Lord Dufferin, one of the Governor-Generals of Canada.

**CHICOUTIMI**, 4,000. At the head of navigation, the headquarters of the Saguenay lumber trade, and the centre of a good dairying country. The Chicoutimi River here joins the Saguenay from the west. From Lake Kenogami, seventeen miles from Chicoutimi, this river falls 486 feet. The portage at one of the falls is called "Portage de L'Enfant," from the story of an Indian baby left in a carelessly fastened canoe, which was carried over the fall of fifty feet without upsetting. The splendid new Hotel Chateau Saguenay, opened here, will be found all that tourists and sportsmen can desire. Passengers for Roberval take the rail at Chicoutimi.

Summer CANADIAN  
Resorts PACIFIC  
On the line of the . . . RAILWAY

The ❁ ❁ ❁ ❁

## Laurentians

The Wonderful Mountain-  
Lake Region of Quebec ❁



THE Laurentian Hills, the illimitable wilderness which stretches away to Hudson's Bay, are within a few hours' ride of Montreal. In this vast region is a labyrinth of lakes and streams, forming a perfect network of water stretches which teem with fish of different species, and in some parts of the country large and small game are also plentiful. Until within a few years this vast territory was very difficult of access and but little explored, and was in fact almost a *terra incognita*. The completion of the Labelle branch of the Canadian Pacific Railway has made easy of access these Laurentian lakes and

opened up new and virgin fields of sport, and in no place can the lover of the rod well spend a week or two with more glorious certainties of an excellent catch. The scenery along the route is of a varied and most interesting character, including forests, lakes, rivers and mountains, not one of which is uninteresting, and on account of which this district has so aptly been termed the Switzerland of America. The great Horseshoe Curve in the mountains is a worthy rival of that of the famous Pennsylvania in the splendors of scenic beauty it reveals. The charms of this vast region are now becoming known to the lovers of nature and of outdoor life; its healthfulness is proverbial. The pure mountain air, laden with the balmy odors of cedar and spruce, the cool, sparkling lakes, added to the freshness and charm of nature, make this whole region one of incomparable beauty, and just the place one seeks for rest.

It is only 20 miles to Ste. Therese, where the railway through the Laurentians branches off to the north, and thirteen miles further on is St. Jerome, from which another branch leads to Ste. Julienne, past New Glasgow, prettily situated on the side of a mountain and in the valley below, near the waterfalls of a mountain stream. There are two hotels and excellent facilities for camping amidst the most delightful environments. Above the falls is good fly trout fishing, and in Lac L'Achigan, about eleven miles away, there are speckled and grey trout, while in the lakes a few miles further north bass are plentiful. Between St. Jerome and New Glasgow is Ste. Sophie, where there is excellent trout fishing, and to which place sportsmen are attracted in the fall of the year by the capital woodcock shooting on the flat lands.

Shawbridge, nine miles from St. Jerome on the Labelle branch, and forty-two from Montreal, is the gateway to the lake district of St. Angelique, a region little known to tourists and where there is good camping, boating and fishing. Two miles further on the Montfort Junction Railway leads off to another virgin field,



winding up the mountain sides to one of the highest points in the Province. In the lakes and brooks are trout, both red and grey, and in the woods are red deer, partridge and rabbits. There is a fine new hotel at Montfort, and another at Arundel, the terminus of the line.

From St. Margaret's, or Belisle's Mills, it is a three-mile drive to Ste. Marguerite, a pretty village on Lac Masson, where from the crest of a near-by mountain a glorious landscape is obtained. Within view are no fewer than eighteen lakes—all capital fishing waters—and north and east is Lac Charlebois, famous for its trout. By a series of dams a waterway has been constructed from Lac Masson to Lac des Islets, the banks of which afford good camping grounds.

Near where the Laurentians reach their greatest altitude is the pleasant village of Ste. Agathe des Monts, where from the crest of a near-by mountain a glorious landscape is obtained. Within view are no fewer than thirty-three lakes, in nearly all of which there is good trout fishing. There is a steam launch on the lake, and small boats can easily be engaged, the larger hotels usually supplying them free to guests. The roads in the vicinity are good, enabling visitors to drive through the country and reach nameless lakelets in which few lines have ever been cast. Good hotel accommodation is provided, there being five hotels and several boarding houses in the village. The principal hotel—Castle des Monts—is erected on an island connected with the mainland by a bridge. The rates at the hotels are from \$1.00 to \$2.00 per day, with material reductions for prolonged visits, and good accommodation can be secured elsewhere from \$3.00 per week upwards.

From Ste. Agathe it is an attractive seven-mile drive to Ste. Lucie, around which cluster twenty fishing lakes. The village boasts of a comparatively large hotel, at which visitors can be supplied with boats, fishing tackle and vehicles. Eighteen miles away—and more tempting to the sportsman than to those in quest of rest and repose—are Lakes Archambault and Ourreau, two of the largest sheets of water in the Laurentians, in a wild region where red deer, lynx, partridge, and occasionally a moose, are found.

St. Faustin, on the railway line, seventy-eight miles from Montreal, has its quota of well-stocked lakes, in close proximity, and at Bullrush Lake, six miles away, rude accommodation is furnished.

St. Jovite, eight miles further north, is another charming lake centre. The village is picturesquely situated in a broad valley, and although its birth dates back only a few years, evidences a material and prosperous growth. The Riviere au Diable, a noted trout stream, flows through the village. Among the lakes in the immediate vicinity are Lake Long, 1 ½ miles away, celebrated for its salmon trout and large pike; Lake Brochet, two miles from the village, in which pike, perch and carp are plentiful; Lake Ouimet, three miles, an island-dotted sheet, which has been called "the fisherman's paradise," and Lakes Lamoureux, Clair, Desmarais, Sam and others as yet unnamed, which comprise, with those about Ste. Agathe, the best trout-fishing waters in America.

Lac Tremblant, the largest lake in the district, is reached from either St. Jovite or Conception, the next railway station north, and it is on the shores of this magnificent body of water that it is proposed to erect a sanitarium, so favorable for such an institution are the existing conditions of salubrious climate, altitude and delightful environments. Salmon trout and grey trout, the latter of which average from seven to ten pounds,

are plentiful, and there is fair shooting in the locality. Mount Tremblant is alluring to mountain climbers, it being a day's scramble to the top, where the incomparable views which its eminences afford amply recompense one's exertions. On the summit and side are the three Stair lakes, connected by grand waterfalls, whose thunderings vibrate the earth and give the mountain its name. So peculiarly fascinating are the surroundings, and so eminently fitted for the purpose is the place, that its early erection into a great national park is assured.

Labelle is the terminus of the railway, around which cluster innumerable lakes, rivaling those further south in their charm of surroundings and repute amongst anglers. From a quarter of a mile to twenty miles they are to be found, some easy and some more difficult of access, but in none of them will the tourist be disappointed. Here, as at the other places mentioned, reliable guides are procurable, vehicles and boats are for hire, and the tourist can be assured of a maximum of pleasure at a minimum of expense.

Beyond Labelle, carriage roads lead to Macaza and to the Nomingue district, from which canoe trips can be made in many directions.

While there are hotels scattered throughout this vast region—and in some places very comfortable ones—many families find the greatest enjoyment in camping on the margin of some pretty lake, and revelling in the luxury of outdoor life, with all the pleasurable accompaniments of boating, bathing and fishing at command. Permission to pitch tents is readily obtainable, or, in some sections, a small plot of ground can be cheaply purchased outright, on which the erection of an unpretentious cabin meets present requirements, and may be the precursor in many instances of handsome summer residences.

**LAKE TEMISKAMING.** The great Lake Temiskaming—"the lake of the deep water"—is reached at Temiskaming station, a two hours run from Mattawa. The railway, notched in the river bank, closely follows the sinuosities of the Ottawa, which north of Mattawa is a succession of long reaches and expansions with intervening rapids. There is the interesting scenic combination of great pine lands, rugged mountains, many sparkling streams and dashing waterfalls, which, with the swirling waters of the greater river, present a glorious panorama. To the east, Beauchene and Boisfranc lakes and their outflowing streams furnish good sport.

Lake Temiskaming is a magnificent body of water that stretches for 75 miles north; along its entire length the grandeur of the scenery appeals as strongly to the lover of nature as the prolificacy of its woods and waters does to the ardent sportsman. It is the great link in the chain of waterways by which all parts of this region are reached.

At Temiskaming station is a fine hotel—the Bellevue—which is the most convenient as well as the most comfortable headquarters for sportsmen and tourists visiting the country, and also a favorite rendezvous for persons suffering from hay fever and other maladies, the air being clear and bracing, the surroundings congenial and the conditions favorable for recuperation. Good guides, canoes and all necessary supplies are procurable here, and licenses to hunt can be obtained at the hotel.

In all this region are lakes abounding with speckled trout, black bass, grey trout, pike, dore, maskinonge, etc., and there are moose, deer, bear, partridge, duck, and further north caribou.

# CANADIAN PACIFIC.

The  
**Summer Tourists'**  
and . . . . .  
**Pleasure  
Seekers' Route**

The only line to  
**Lakes  
Temiskaming  
and  
Temagaming**

For the . . .  
**Canadian Adirondacks,  
and the  
Virgin Wildernesses**

Easy of access  
Accommodation  
unsurpassed . . . . .

No Hay Fever . . . .  
**Fishing and Shooting**  
unexcelled



Crotch of the Montreal River near Lake Temiskaming.

The  
**Laurentian  
Mountains**

Within three  
hours of Montreal

**Seaside  
Service**

To all points  
on Atlantic Coast  
and  
Gulf of St. Lawrence

See description of  
the above, in pages 54, 55 56  
of this booklet, or apply  
for copy of "Summer Tours"  
and "Fishing and Shooting."

**C. E. E. USSHER,  
Gen'l Pass. Agent.**

Montreal City Ticket Office, 129 St. James Street.

W. F. EGG, City Passenger Agent.



EXPLOIT DE LA PLACE D'ARMES

