

COMFORTABLE TRANSPORTATION.
MERCANTILE OPPORTUNITIES.
UNEXCELLED WATER POWER.
ELECTRIC CONVENIENCES.
COSMOPOLITAN PEOPLE.
MINERAL RESOURCES.
FIRST-CLASS HOTELS.
THE LAND OF

GOLD,
SILVER,
COPPER,
NICKEL,
ZINC AND
LEAD.



KASLO

British Columbia.

HEALTH-SEEKER'S MECCA.
SPORTSMAN'S PARADISE.
UNEXCELLED CLIMATE.
DELIGHTFUL SCENERY.
BEAUTIFUL LOCATION.
MINERAL WATERS.
CHURCHES.
HOSPITALS.
HUNTING.
BATHING.
BOATING.
SAILING.
FISHING.
SCHOOLS.

The Mineral Metropolis of the World.

PUBLISHED BY THE
KASLO BOARD OF TRADE.

Introduction

By the
President of the Board of Trade.

THE territory to the east of a line such as would follow the Kootenay river from the international boundary to the Columbia river, and thence northward along the Columbia river, contains the mining camps of Slocan, Ainsworth, Trout Lake, Lardeau, Moyie and Fort Steele, famous for their wealth of silver and lead. The City of Kaslo is centrally situated and is the chief emporium of trade and of information in regard to this latter section. All of the silver-lead mines of Kootenay that have up to date attained and maintained for any length of time the rank of shipping mines are located within a radius of fifty miles from Kaslo. But extending beyond that circle to the boundaries of the Province on the east and north there lies a region much of it at the present date unoccupied and undeveloped which every where gives promise of future productivity.

The Kaslo Board of Trade through the medium of this souvenir publication seeks to note past progress and present conditions as exemplified in that portion of the silver-lead belt which has received some measure of development, and to indicate the possibilities of the unexplored empire that lies beyond. That our publication committee has availed itself more freely of the art of photography than that of journalism will not, I am certain, render its work less acceptable to those into whose hands it may fall.

For information address

O. A. SUTHERLAND,
Secretary Treasurer.

G. O. BUCHANAN,

President,
Board of Trade,
Kaslo, B. C.

Kaslo

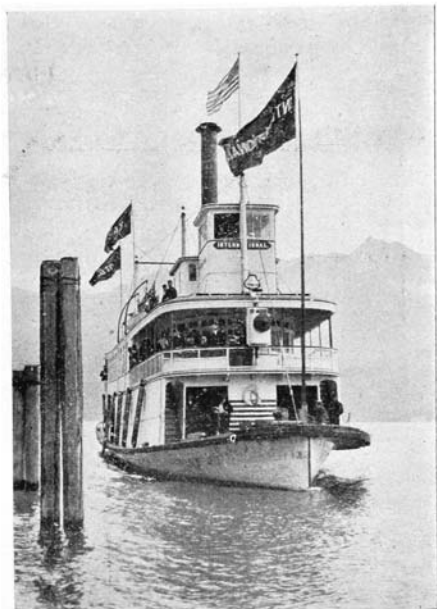
THE COMMERCIAL AND MINING CENTER OF
THE KOOTENAYS.

Energetic and progressive people are always looking for opportunities. Those who grasp the opportunity when within reach are the ones who meet with deserving success.

Kaslo, the commercial and mining center of the Kootenays, offers more golden opportunities to men of capital, to men of brain and muscle than any other city or town in the Dominion. Nowhere in the broad expanse of Canada is there more wealth or more varied resources than those of which Kaslo can rightfully boast. With a climate unexcelled, with the grandest scenery, and in brief everything which a lavish nature can supply. With the addition of first-class hotels, pleasure resorts, recreation grounds and luxurious transportation by rail or steamer, Kaslo has all the modern conveniences that the most fastidious could desire. Kaslo is the only city in West Kootenay district from which any mining camp can be reached in one day.

Transportation Facilities How to Reach Kaslo.

Kaslo is connected with the world by being within easy reach of the four transcontinental railways which cross the American continent.



K. R. & N. Co.'s Steamer International.

From the north the Lardo-Arrowhead branch of the Canadian Pacific Railway forms a direct connection with the main line at Revelstoke.

The Kaslo & Slocan Railway, following the valley of Kaslo river to the summit, 20 miles distant, thence winding around rugged mountain sides, a farther distance of nine miles, connects at Sandon on the west with the Nakusp & Slocan branch of the C. P. R.

From the east comes the Crow's Nest Pass line and from the southeast the Great Northern system.



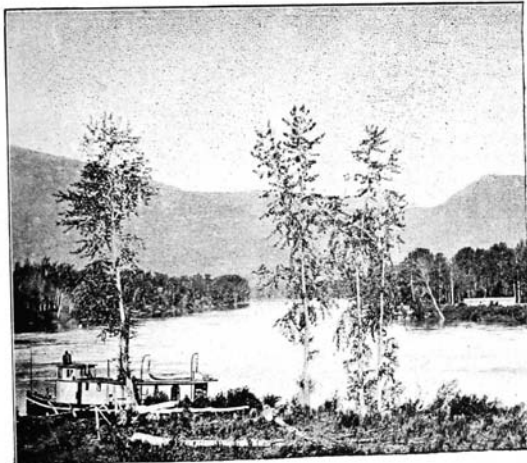
Bear Lake, Kaslo & Slocan Railway.

Connection with the Union Pacific and Northern Pacific Railways is made by the Spokane Falls & Northern Railway and the Kootenay Railway & Navigation Company at Five Mile Point on Kootenay river 35 miles south of Kaslo.

Kootenay Lake, a beautiful body of fresh water extending due north and south for 70 miles, varying in width from two to six miles, with Kootenay river extending to the southeast far into the state of Idaho, and the outlet of lower Kootenay river for a distance of 22 miles, is navigable for large steamers during the entire year, as the climate is so mild there is no danger from freezing.

On this picturesque inland sea, on the shores of which Kaslo is the only city of importance, scores of vessels are in commission carrying passengers and freight.

For a number of miles northeast of the north end of Kootenay lake, Duncan river is navigable, thus placing Kaslo in communication by water with hundreds of mining camps and other places of importance.



Scene on Kootenay River, Steamer "Kaslo" in the foreground.

The Kootenay Railway & Navigation Company.

The above named concern is strictly a British enterprise. Their capitalization is \$2,500,000. They own and operate the following lines :

The Kaslo & Lardo-Duncan Railway, which traverses the Duncan river valley, furnishing transportation for the mines, ranches, and other resources of that prolific section.

The Kaslo & Slocan Railway running westerly from Kaslo to Sandon, with a spur two miles in length to Cody, thus furnishing transportation to the many rich mines of the Kaslo and Slocan districts and in time is to be extended from Sandon to Slocan lake.

The Bedlington & Nelson Railway, so called, extends to the International boundary line on the upper Kootenay river.

What is termed the Kootenai Valley Railway is the extension of the Bedlington & Nelson south into United States territory where it unites with the main line of the Great Northern system, at Bonner's Ferry, Idaho.



Scene on the Kaslo & Slocan Railway.

The International Navigation & Trading Company is the steamboat branch of the foregoing described railway systems. They own the palatial steamers "International" and "Alberta" and have two more large vessels of the same character under construction besides a number of tugs and barges in use to handle their traffic.

The headquarters and general offices of the Kootenay Railway & Navigation Company are in Kaslo, in buildings erected for their special use.



Kootenay River Bridge, K. R. & N. Co.



Payne Bluff Kaslo & Slocan Railway.

Canadian Pacific Railway.

The Canadian Pacific Railway is one of the greatest arteries of commerce on the western hemisphere, and the advantages it gives the traveller and the shipper are enjoyed by the people of Kaslo.

The Arrowhead-Kootenay branch reaches Kootenay lake a short distance north of Kaslo and the Crow's Nest Pass south, while the Columbia & Kootenay and Slocan Valley branches touch navigable water 40 miles southeast.

Between all these termini and way points, a fleet of swift and luxuriously appointed steamers connect with Kaslo.

The "Kokanee," "Moyie" and "Nelson" are principally for passenger service. Besides these the company have a number of freight boats, pleasure yachts, tugs and barges.

The scenery on the route to Kaslo is indeed sublime, travelling by rail, river and lake vary the usual monotony of sight seeing on the lines of the great transcontinental railways. An ever changing panorama of snow-clad mountains, verdant valleys and rippling streams delight the eye far beyond the most vivid description.

Here the great mountains from whose fastnesses the hardy prospector is wresting the wealth of gold, silver, copper and lead hid away since the world began, the placid lakes whose waters yield their wealth of salmon and speckled trout and on whose bosom water fowl float in fancied security making this indeed the sportsman's paradise.

The valleys yield grains and cereals of all descriptions and of the best quality, and here, where the invalid is experiencing the exhilaration of renewed strength and energy, the wisdom of an all-wise Providence in providing these bountiful resources is indeed appreciated most fully. Even a few months or a summer spent among these dancing streams, rushing waterfalls and sky-piercing peaks, inhaling the purest ozone will undoubtedly add many years to the life of the weary traveller, who here finds the long-looked-for haven of rest and recreation.



Steamer "Moyie."

Many of the old world tourists, who have visited for the first time these varied scenes of beauty and grandeur have expressed their surprise and delight, and that no more would they follow the time-worn paths through foreign lands in search of pleasure and adventure. A quarter of a century ago this land was almost totally unknown to the white man, but now the most modern conveniences

and most complete accommodations are within sight of the home of the bear, deer, cariboo and mountain goat.

The most peculiar attribute of these Rocky Mountain resorts is that after once having spent a short season here their attraction continues for all time and the visitor is compelled to revisit until at last they decide to make here their permanent abode with ecstatic enjoyment of all that kind nature in her most generous mood can supply.



Steamer "Nelson."



Steamer "Kokanee."

Mines of Kaslo-Slocan.

When one considers in detail the immensity of the mining resources, and the variety of the minerals that are directly tributary to Kaslo, it is amazing.

There are mines of gold, silver, copper, lead, nickel and zinc. Iron for fluxing purposes is obtainable in immense quantities. Marble for building purposes is being quarried directly across the lake from Kaslo and is in demand in neighboring towns.

Adjacent to Kaslo are large deposits of lime which are being shipped to the smelters at Nelson and Trail in British Columbia, and to Northport, Washington.

The Slocan silver-lead belt, which is considered the richest of its kind in the world, lies directly west of Kaslo and is brought into touch with the city by means of the Kaslo & Slocan railway.

Until late in the fall of 1891, the existence of mineral was unknown in the Slocan district. Now dividend-paying mines are counted by the score and many prospects are being rapidly developed into paying mines.

The following comparative statement compiled to June 15, 1899, is given to show the percentage of dividends paid on the capitalization of four mining districts in this portion of the Northwest and is a very creditable showing for the Slocan considering its age:

DISTRICT.	CAPITALI- ZATION.	DIVIDENDS PAID.	PER CENT ONE CAPITALI- ZATION.
Kaslo-Slocan.	\$ 8,465,000	\$2,818,500	32 1-2
Coeur d' Alene.	15,500,000	4,650,000	30
Roseland.	7,000,000	1,365,000	20
Nelson.	3,450,000	170,000	5

There are now nine concentrating plants in the Kaslo-Slocan district capable of handling in the aggregate 800,000,000 pounds of ore per year and several others are projected which will be erected in the near future.

Besides the many mines of the Kaslo-Slocan district which produce high grade silver-lead ores, there are a number which carry gold in paying quantities. These are chiefly found in the granite formation on the southern borders of the district.

A strong syndicate composed of English and French capitalists, within the past year have acquired the Joker and Derby groups of gold mines southwest of Kaslo and have been developing them with gratifying results. They have connected their property by a road with Kaslo and are preparing to erect a gold amalgamating mill to treat their ores in the near future.

In the vicinity of the Blue Ridge, ten miles west of Kaslo, extensive bodies of gold bearing quartz have been found, but development has not yet advanced to that point where real values are known.

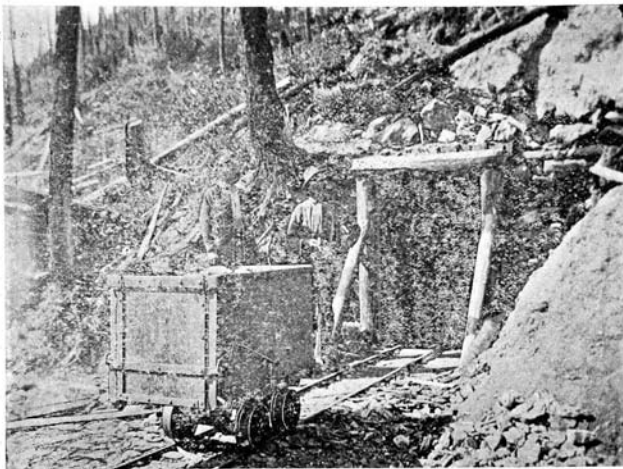
As many of the mines of the district are owned by

private individuals or by close corporations, it is a difficult matter to give the amount of dividends paid by such properties, a partial amount, however, is given in the tabulated statement on another page.

Such mines as the Payne, Whitewater, Whitewater Deep, Jackson, Ruth, Queen Bess, Noble Five, Reco, Last Chance, Slocan Star, Idaho and many others have an international reputation and are well known on two continents. Those mentioned are principally silver-lead producers, and although they cover a considerable area in the district yet there are vast reaches of mineral ground which as yet have not been touched.

Notably is this the case with the South Fork section of Kaslo river, which begins five miles west of Kaslo. Besides scores of other healthy embryo mines, the following have shipped large quantities of ore: Montazuma, Gibson, Silver Bell, Bismarck and Black Fox.

Beginning about eight miles due west of Kaslo, and lying on both sides of the Kaslo & Slocan railway are large numbers of properties carrying gold, silver, copper and lead. Tons of high grade ore have been shipped from the Eureka, Texas, Carbonate No. 2, Consolation, Emerald Hill, Utica and other mines. There is considerable development



Hazel Tunnel, Whitewater.

work being carried on in this section yet there are thousands of acres which have so far scarcely been touched by the prospectors' pick.

Whitewater.

The stirring and progressive town of Whitewater is situated in the broad valley of Kaslo river 17 miles west of Kaslo. It is one of the most important shipping points on the Kaslo & Slocan railway.

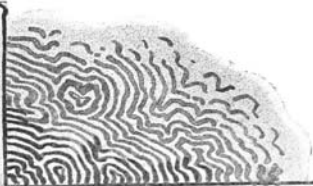
The town is well supplied with hotels, stores, etc. From here wagon roads and trails radiate out in every direction to the different mining camps.

At least a half dozen well known shipping mines already named in this work are located from one-half to five miles from the village. The Whitewater concentrator and extensive compressor plant of the Whitewater Deep mines are located within the townsite, while the Jackson mines and concentrator are five miles to the south.

The number of mineral claims on Whitewater, Lyle and Jackson creeks, which are in various stages of development, are too numerous to be mentioned here.



Wellington Mine, Whitewater.



TORONTO ENGRAVING CO.



Whitewater Mines Concentrator.

Whitewater Deep and Whitewater Mines.

One of Whitewater's nearest and best known mines, the Whitewater, which up to 1897 had paid in dividends \$240,000, at which time a two-thirds interest was sold to an English Company. When located in 1892 it showed nothing on the surface but an oxidized iron stain in the slate. The locator had little or no faith in his find and was willing to accept any offer for his location.

Capitalists were induced to investigate this claim. The iron stain mentioned above was on the top of a cliff but a few feet in height. To assist in reaching the top it was necessary to sink the point of a prospecting pick into the loose earth so as to be drawn up. The weight dislodged and brought to the surface a boulder of galena weighing 40 pounds. Two hundred dollars was then paid for the claim. With one pole pick, which was never sharpened during the work, one man graded about a mile of trail and mined over seven tons of ore which when shipped to the smelter netted over \$900.

Extensive work, however, did not commence on the property until the fall of 1896, when the Whitewater soon became the banner mine of the central portion of the central portion of the Kalso-Slocan district. The property was developed by driving adit tunnels and every tunnel penetrated a chute of ore. For a month at a time shipments would average two cars per day. Dividends soon came so fast and were so satisfactory that it is no wonder an English mining syndicate desired such a prolific producer. Since acquiring the property the English

syndicate have been systematically developing and equipping the same.

A fine concentrator of 120 tons daily capacity has been built and is in successful operation.

The Whitewater mine is connected with the railway station in the town by one of the best mountain wagon roads in the country.

Extensive development work on the Whitewater vein demonstrated that its dip would at depth carry the ledge outside its side line. As the fissure descended down into the earth it would come under adjoining mineral locations to the south. Under the existing laws of the Province, the ores of the vein lying below the side line of the adjoining claim would belong to that location. These facts coming to the notice of a mining promoter on the lookout for a bonanza, he secured several locations from the original owners, bordering the Whitewater mine on its southerly side, and organized an English company to develop and operate the same.

First a cross-cut tunnel about 1000 feet in length was driven which cut the vein several hundred feet in depth, proving beyond doubt the value of the property. An extensive air compressor was then added to the equipment, water power being used.

A still lower tunnel has been started which will, when driven its full length, 1800 feet, prove the deepest development in the district. This bore is being energetically pushed to a finish.



Whitewater Deep Tunnel.

Whitewater Deep Power House.

Whitewater.

McGuigan Station.

McGuigan is a station on the Kaslo & Slocan railway 2.4 miles west of Kaslo. One or two hotels, a store and postoffice comprise the business establishments at present.

On McGuigan creek, in the Washington, Surprise, Best and Dardenells basins, in the aggregate there are 14 shipping mines which load their product on the cars at McGuigan siding. A well built wagon road leads up the valley several miles from the station from which excellent rawhide trails branch off to the numerous mines and prospects. It is impossible to describe all the mines of this section in this article for lack of space.

The Washington is about the oldest location and is equipped with a concentrator of 50 tons a day capacity.

The Rambler-Cariboo in the Best basin is now one of the heaviest producers and a steady dividend payer.

Extensive development work is being carried on on the Dardenells which has for years been a shipper of high grade ore. This property is supplied with a powerful air compressor. On the Antoine quite an amount of development work has been performed and large quantities of high grade ore has been shipped. Although the property has been quite well developed by tunnels, hoisting machinery is in place for sinking to lower depths.

The Surprise has been an extensive shipper in times past and has paid its owners well. A force are being kept at work on development and shipments will soon be resumed. Although the Lucky Jim lies east of

McGuigan station and has an independent siding on the Kaslo & Slocan railway, it may be classed as a McGuigan mine. This property is being worked under bond by the Smelting Corporation, Limited, of England, whose head British Columbia offices are at Kaslo. The ore bodies are large, carrying silver, lead and iron with a high percentage of zinc. The quantity of this latter metal in the ore accounts for this corporation mining and shipping thousands of tons to their plant in England. The property is equipped with a compressor plant and surface tram.

On the ridge separating the Best and Dardenelles basins is located the Best mine. An incline shaft develops the lead 75 feet in depth from which drifts have been run exposing three feet of ore. Considerable ore has been shipped.

Adjoining the Washington on the east is the Slocan Boy through which the Washington lead runs. Quite a quantity of high grade ore has been shipped from this claim. It is worked by shaft.

To the above might be added the Red Fox, Tom Moor, Soho, Ruby Silver, Silver Bell and others, all of which have contributed more or less to the world's wealth and the fame of this district.

This section is exceptionally well timbered and well watered, which is of decided advantage in mining and concentrating operations. Many properties in this locality are worked by means of shafts, most of the Slocan mines being tunnel propositions.



Pack Train Leaving Antoine Mines.



Jackson Basin.

The following described highly productive properties all lie immediately contiguous to the Kaslo & Slocan Railway and all ship their product via that line to Kaslo, where the business of the different companies is transacted.

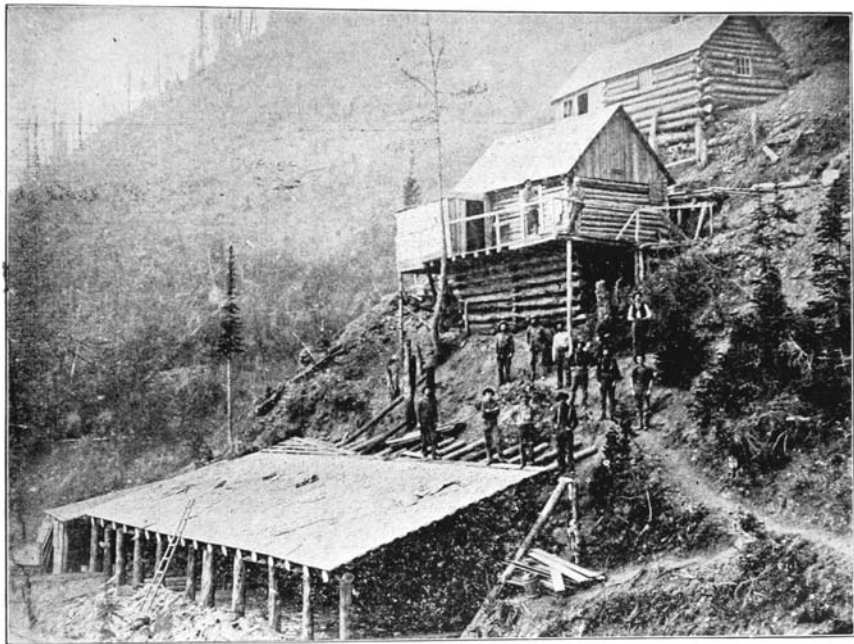
The Jackson Mines, consist of the Northern Bell, Dublin Queen, Kootenay Star, and one or two other locations. A 50-ton a day concentrator has been erected on the property which has been running successfully. This group is situated on Jackson creek, about five miles from Whitewater station on the Kaslo & Slocan Railway with which it is connected by a first-class wagon road. Development work has been energetically pushed and the property is in as fine shape for future extraction of ore as any mine in the district. The ore, which consists of silver and lead, is said to average \$90 per ton and the mine has proven highly profitable.

Adjoining the Jackson mines on the south is the Florida mine, owned by a Kaslo company. A large body of ore was encountered in this lead on November first and it has entered the list of prolific shippers.

The Antoine, consisting of three claims, lies in the Surprise basin about three miles from McGuigan station, on the Kaslo & Slocan Railway. The property has been well developed by tunnels, while hoisting machinery is in place for the purpose of sinking to lower depths. Considerable exceedingly high grade ore has been shipped and a number of dividends paid. There are large ore reserves in sight which it is said will yield handsome returns.

The Payne mine was the first located in the Slocan district and has been the heaviest dividend payer in the Province. The group originally consisted of the Payne, Mountain Chief and Maid of Erin, other claims have been added since. About two years since the property passed to the control of a Montreal company and is stocked for \$4,000,000. Previous to the ownership changing hands the original owners divided \$1,000,000 in profits. The property is well developed by a series of tunnels running on the vein and is equipped with a surface tramway terminating at the railway tracks. As the ores of the mine are so clean a concentrator has been unnecessary, values are given as follows: Galena 175 oz. silver and 70 per cent lead, carbonates 80 to 100 oz. silver 35 to 40 per cent. lead. When working full force 175 men are employed and the net earnings average \$70,000 per month. This property is located twenty-four miles west of Kaslo, on the Kaslo & Slocan Railway.

The Ruth is located about one and one-fourth miles from the Kaslo & Slocan Railway at Sandon with which it is connected by a wagon road. For the past three years the property, which consists of eight claims, has been owned by the Ruth Mines Company, Limited, of England. The property has been highly profitable in the past and will be much more so in the future. A large concentrator has been erected, also a gravity tram connecting with the mine. Besides these improvements the company have a large air compressor and saw mill.



First Buildings, Last Chance Mine.

The Slocan Star group of eight claims, situated near the Ruth, is one of the early day locations of the Slocan. The property soon passed to the ownership of the Byron N. White Company, of Milwaukee, Wis., which is a close corporation, with a capital stock of \$500,000. Thousands of tons of clean ore have been mined and shipped, but the main portion of the immense ledge, 30 or more feet wide is filled with concentrating ore. A concentrator of 150 tons daily capacity has been in operation for the past three years. The property is developed by a number of cross cut tunnels, cutting the vein at a depth of from 50 to 500 feet. Values range from 80 to 100 ounces silver per ton and 70 per cent. lead. From 80 to 110 men are employed. As the corporation is a close one it is difficult to ascertain the actual profits paid, but the credited total of dividends given to January 1899 is \$400,000.

The Last Chance, which has an independent siding on the Kaslo & Slocan Railway, between Sandon and Cody, is one of the banner mines of the district. Shipments of one car per day returning a net profit of \$1,500 per car has been its record. The mine is connected with the railway by an aerial tram. Seven claims are included in the group. The buildings shown in the illustration of this property are the first erected, but now replaced by more modern structures showing the progression made from the prospective to the bonanza stage not only in this but other mining properties in the district.

The Ajax is located south of and adjoining the Last

Chance and is owned by the Ajax Mining & Development Company and consists of three claims. One drift on the Ajax claim is 500 feet in length, in ore all the distance. The ore is said to carry 200 ounces silver and 65 per cent. lead. There are numerous fine showings on the surface which as yet have not been explored.

The American Boy is located on the Last Chance vein and is immediately below that mine. It is developed by a cross cut tunnel 550 feet in length and drifts along the vein. In its earlier days considerable ore was shipped from this mine and recently large bodies of high grade ore has been uncovered which have made the mine a heavy shipper and a prolific dividend payer.

The Noble Five group, consisting of the Knoxville, World's Fair, Bonanza King, Maude E., Noble Five and other claims, is located near the Kaslo & Slocan Railway terminus of the Cody spur. This property is owned by the Noble Five Consolidated Mining Company, At Cody they have a concentrator of 120 tons daily capacity. Connecting mine and mill is a Finlayson double rope aerial tramway capable of delivering 20 tons per hour. A huge compressor for power drills is also in place. For the past two years the company have confined their energies more to thorough and systematic development than to the extraction and shipment of ore. Over 12,000 tons have been shipped thus far, an amount which soon will be greatly augmented as the property is in excellent shape.

The Reco, property of the Reco Mining & Milling



Slocan Star Concentrator.

Company embracing the Reco, Texas, New Denver, Clifton and Ephraim locations, is also situated near Cody. This is also a well developed property and has been highly productive, having paid its way from the start and divided large dividends among its stockholders. An aerial tram and concentrator are planned which will be erected in the near future. Large quantities of high grade ore have been marketed from this property and vast reserves of concentrating ore are on the dumps and in the mine awaiting the completion of the works.

The Smelting Corporation, Limited.

Besides being the headquarters for many prominent mining and other syndicates, Kaslo is fortunate in having been selected as the base of the extensive operations of the Smelting Corporation, Limited, for the Province of British Columbia. Mr. Arthur R. Browne, F. G. S., etc., a graduate of the best mining and metallurgical colleges of Europe and who has had an extensive experience in different parts of the world is the British Columbia manager.

The extensive smelting plant of this company is located on the Manchester ship canal, in England, and is one of the most complete and up-to-date of its kind to be found anywhere.

Mr. William Lidderdale, late governor of the Bank of England, is chairman of the board of directors.

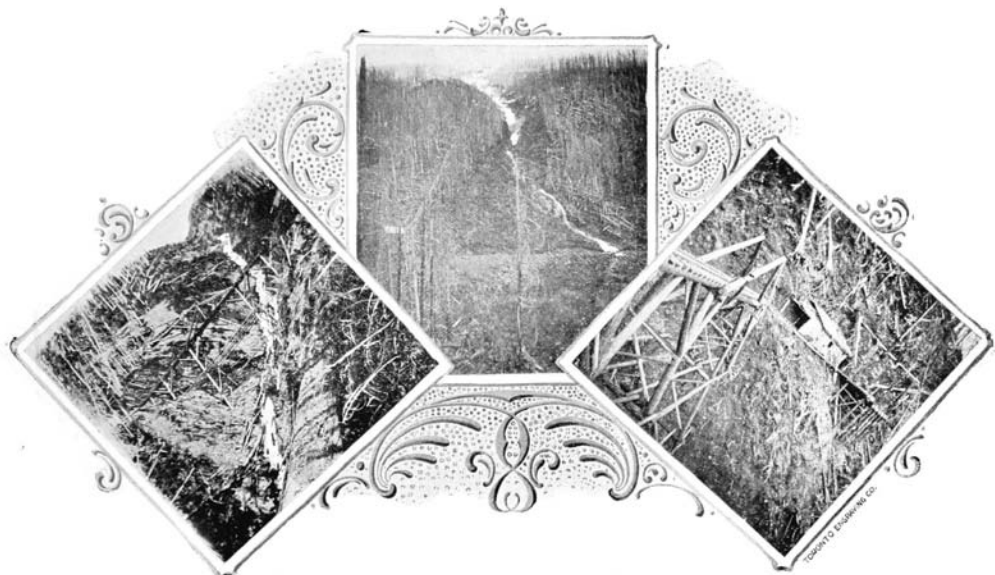
The principal object of the corporation is to treat ores by a particular process invented by Mr. Henry Fry,

a noted metallurgist. This method of reducing all kinds of ore, rebellious and otherwise, is based chiefly on the use of a chemical flux, using the electrolytical system to save the by-products.

Several thousand tons of zinc-lead ores have already gone forward to the works and more is in transit.

The operations of this company are different from other smelting concerns in this field seeking the product of the various mines. Before Mr. Browne's advent, ores which carried zinc in any quantity over ten per cent were taxed a higher rate for reduction charges, as zinc was considered a detriment to successful smelting in any works on this continent. Instead of competing with local or American smelters the Smelting Corporation, Limited, seek a class of ores which heretofore have been comparatively worthless and which the smelting people on this side the Atlantic did not desire. Under this new condition of affairs the Smelting Corporation can offer a price for zinc-lead ores that the mines above described can be worked at a profit, which will greatly increase the output of ore from this district.

Mr. Browne has bonded several large properties carrying the particular character of ore he desires. Some are located in the Slocan and some in the Ainsworth districts, all of which are being exploited. For several months this company has been operating the Lucky Jim mine situated near the Kaslo & Slocan Railway, 20 miles west of Kaslo, and have made heavy shipments therefrom.



Views of the Lucky Jim Mine showing the tramway, the course of the famous Lucky Jim Slides and No. 1 Tunnel.

Three surface views of this property appear on page 23. Besides this several claims on an extensive silver, lead and zinc bearing lode have been bonded in Ainsworth camp, twelve miles south of Kaslo and an option has been taken on the historic Blue Bell mine on the east shore of Kootenay lake, ten miles distant from Kaslo.

The possibilities for this section of West Kootenay by having such a strong syndicate working along these lines, is beyond conjecture, for reasons already stated here.

When the production of the class of ore desired by them will warrant it the Smelting Corporation will erect works, similar to their English plant, at Kaslo.

Woodberry Creek.

A few miles south of Kaslo, flowing from the west into Kootenay lake is Woodberry creek. The extensive silver-lead properties of the Canadian Pacific M. & M. Co., together with their 50-ton concentrator, are located at the confluence of this stream with the lake. This is a busy point, having daily boats running to and from Kaslo.

Along the mountain sides bordering this watercourse and on its many tributaries are a countless number of mineral locations, some of which are producers of extra high grade ore, principally silver and lead, although gold, copper and nickel are also found in paying quantities. A wagon road from Kaslo to upper Woodberry creek is under construction, the most of it being already completed.

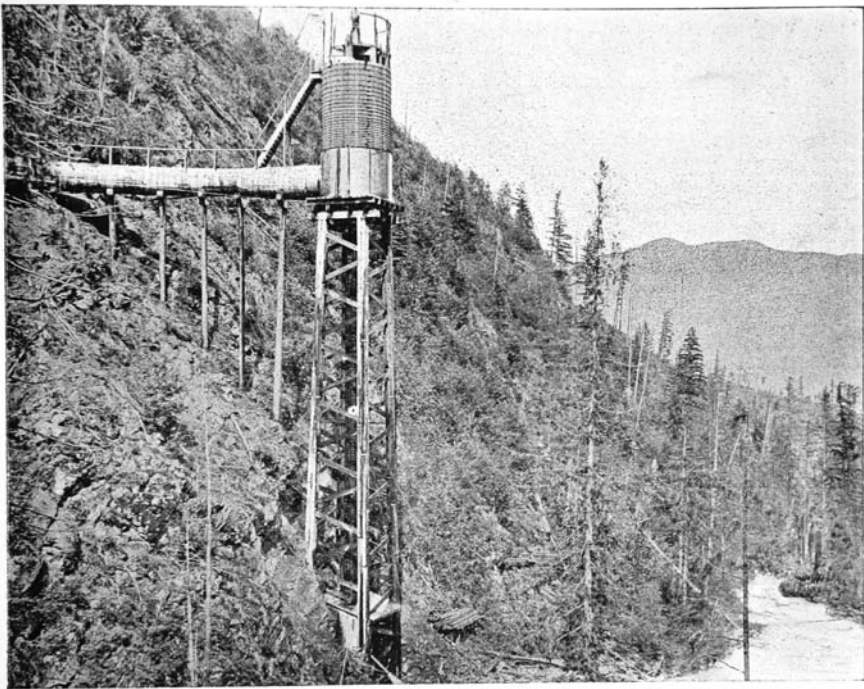
Ainsworth.

The Ainsworth or Hot Springs camp, the latter name given on account of there being several hot springs gushing from the base of the mountain where this picturesque little mining town is located, is situated on the west side of the lake 12 miles below Kaslo.

Although considerable of the yellow metal has been found Ainsworth does not lay claim to being an exclusively gold camp. The ores are principally silver-lead, lead and zinc and the much desired dry silver ores. Two extensive mines, the Skyline and the No. 1, have produced thousands of tons of this latter class and are now working with a continually increasing output. The quantity of silver-lead ore that has been shipped from this camp is enormous. Lately the mining of zinc-lead ore has become a feature, as the Smelting Corporation, Limited, of England, a description of whose operations is given elsewhere, have secured a number of developed mines in the camp.

The Stevenson concentrator of 120 tons daily capacity, is located on the bank of the lake a short distance south of the town.

To provide cheap power for machine drills, motive power, etc., the Taylor Air Compressor Company have completed an extensive plant on Coffee creek (an illustration of which is on page 25). The air is compressed by means of the pressure of falling water and is carried through pipes to any desired point. Wagon roads lead from the lake front to all the principal mines.



Coffee Creek Air Compressor.

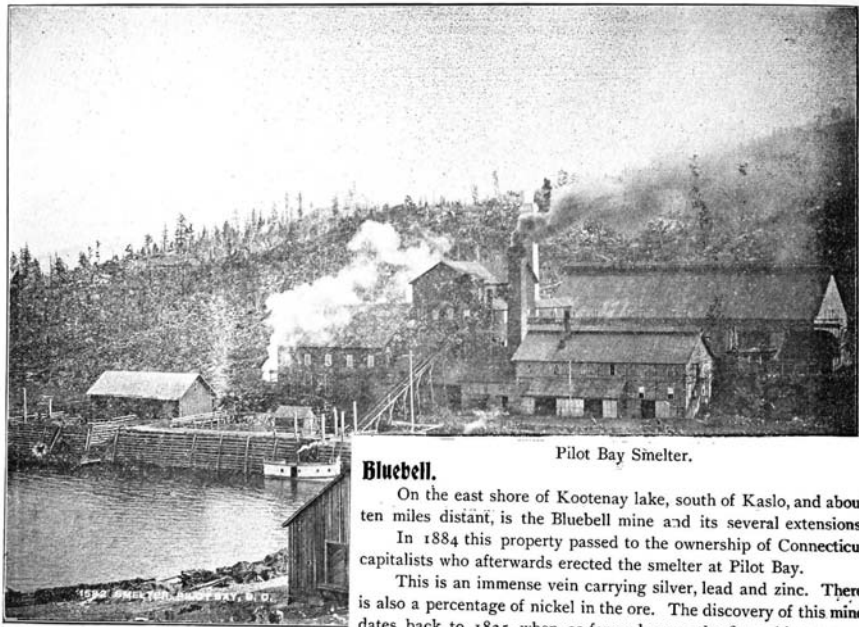


Packing Scenes.





This is an exhibition of one of the famous shipments of ore from this district which has served to make it celebrated as a wealth-producer, second to none in the mining history of the world. It represents a shipment of one million pounds ready for transportation to the smelter from the Ainsworth wharf.



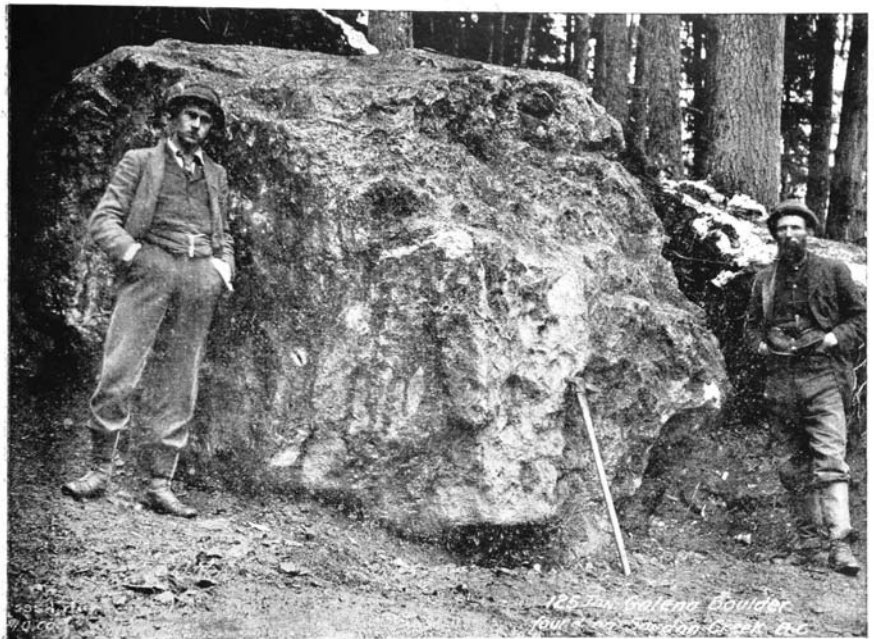
Pilot Bay Smelter.

Bluebell.

On the east shore of Kootenay lake, south of Kaslo, and about ten miles distant, is the Bluebell mine and its several extensions.

In 1884 this property passed to the ownership of Connecticut capitalists who afterwards erected the smelter at Pilot Bay.

This is an immense vein carrying silver, lead and zinc. There is also a percentage of nickel in the ore. The discovery of this mine dates back to 1825, when as far as known, the first white man on



Famous Big Boulder, found 30 miles from Kaslo in 1892. It contained \$20,000 worth of silver and lead.

Kootenay lake, David Douglas, a Scotch botanist, discovered the outcrop of the lode and mentioned the fact in his reports of this section. Later Hudson's Bay employees melted the lead and made bullets for their flint-lock muskets.

Tam O'Shanter.

One mile north of the Bluebell, about nine miles distant from Kaslo, lies the Tam O'Shanter mine, the property of Montreal and Colorado parties. A considerable amount of development work has been performed on this mine and large quantities of silver ore have been shipped.

Contiguous Mines.

Although many of the mining properties already mentioned are really contiguous to Kaslo, their pay rolls and other valuable features being directly to the advantage of the city, yet as they are not located within sight of the municipality, they have not been classed under the above heading.

The following named, however, are but a short distance from the city and are owned principally by Kaslo people.

Leviathan.

The Leviathan Gold Mining & Milling Company's property is located on the north slope of Campbell creek opposite Kaslo. Its holdings consist of 11 full claims on a vein 50 feet in width of Pyritic ore of a similar character to the famous mines of Rossland camp, carrying values

consisting of gold, silver and copper. Three tunnels and a large amount of surface work comprise the development. When thoroughly opened it is the opinion of prominent mining experts that this will prove to be one of the biggest mines on the American continent.

True Blue.

The True Blue mine and its extension, the Peacock, are located in plain sight of Kaslo on True Blue mountain. This property carries gold and copper, a considerable shipments have been made to a local smelter.

An English concern, the Hall Mines, Limited, had the property under bond for \$65,000 but all interests have reverted to the original owners and it is understood that the representatives of other capital are endeavoring to secure the mine.

Famous Boulder.

The famous big boulder of which an illustration is given, was found by a prospector in the spring of 1892 while looking for a tent pole. The prospector thought he had stumbled on the outcrop of a wonderful mine and immediately staked a claim. Subsequent development, however, proved that this mass of silver-lead ore had become detached and rolled down from the Slocan Star vein farther up the mountain. The discoverer of the boulder sold his find to a mining speculator for \$2,000 cash. It is claimed this chunk of galena produced \$20,000 worth of silver and lead.



Starting Supplies to Bannockburn.

No. 1 Mine, Ainsworth.



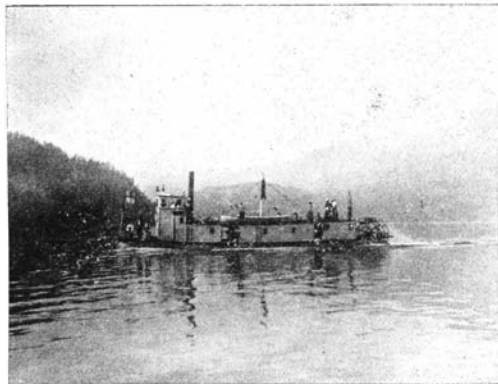
Bluebell Mine.

Lardo-Duncan.

The Lardo-Duncan District lies north and west of Kaslo, adjoining the Kaslo-Slocan district on the south.

The veins of the Lardo-Duncan section carry gold, silver, copper, lead and other ores.

The Lardo and the Duncan rivers unite at a point a short distance above the head of Kootenay lake; the former flowing from the northwest and the latter from the northeast. The Duncan



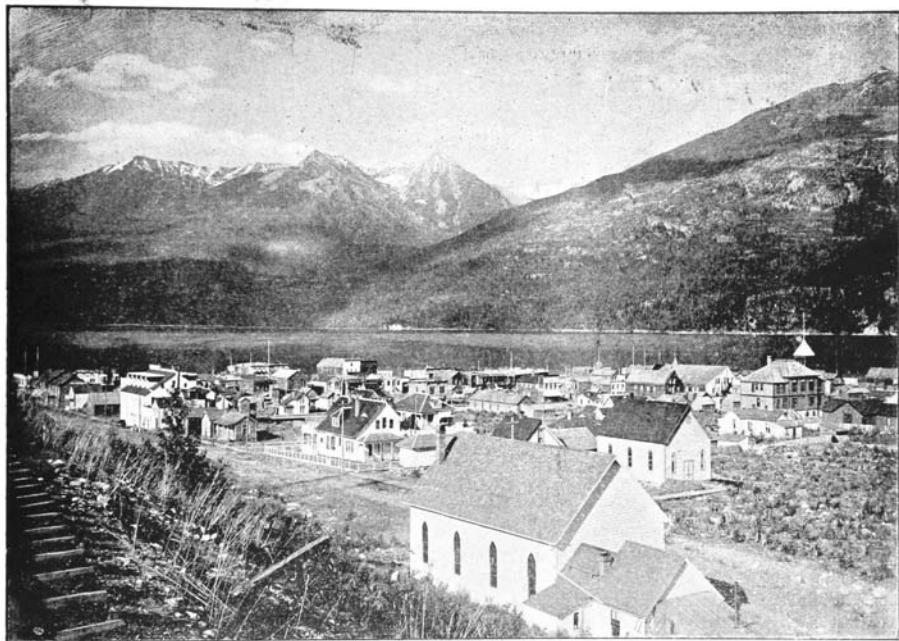
The Lodestar Mining Company's Str Marion on Duncan River.



No. 2 Tunnel Leviathan Mine.

being navigable for steamers from Kaslo for 36 miles.

A number of strong mining companies are employing large forces developing and extracting ore. Notably are the following: Bannockburn, Lodestar, Gold Hills, Levina and other companies, all owned and controlled by Canadians, who have established their head offices at Kaslo. On six or eight claims, owned by the Lade brothers, telluride of gold is found. A shipment to the Kootenay Ore Company's sampler at Kaslo yielded 12 oz. gold per ton. The timber and agricultural resources are practically without limit and many persons are engaged in these pursuits.



Kaslo Mercantile Interests.

Being so conveniently situated Kaslo is naturally the wholesale and retail supply point for all the country described in the foregoing pages. The producer of supplies and manufacturer of different articles who have located at Kaslo find a ready market in the many camps for their products. Kaslo is destined to be a great manufacturing center and the superb water power of Kaslo river will be utilized to furnish energy to turn the many wheels of industry.

The natural water power of Kaslo is undoubtedly one of finest in the known world, the river having sufficient breadth and depth to develop, when harnessed, all the force necessary to drive the machinery of the largest manufacturing cities of the old or new world. For the first five miles above the city the fall is about 100 feet to the mile. Flowing for most of its length through a valley, and crossing from side to side, makes the diverting of the current for utility purposes an easy and inexpensive matter.

Kaslo Water Works and Fire Protection.

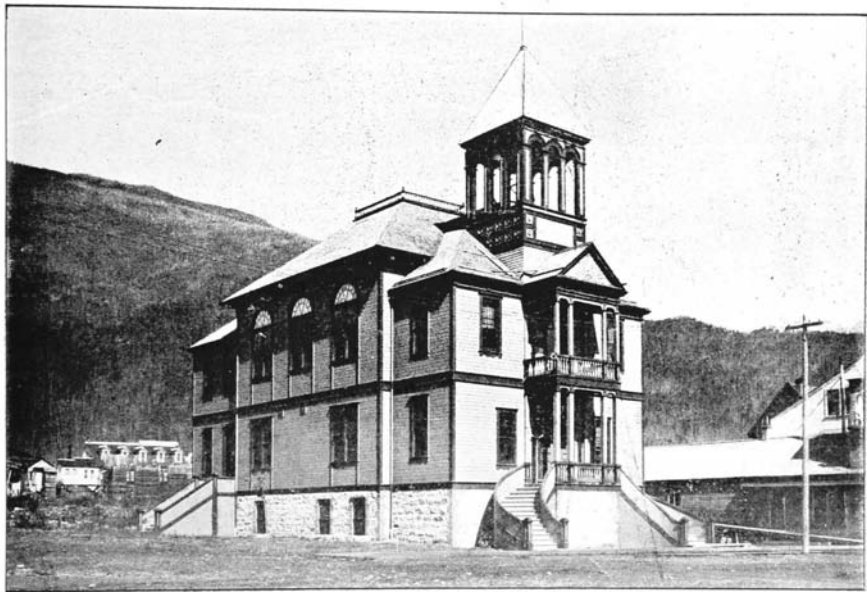
Kaslo's water system is now as near perfection as a water supply for a city could well be. The works were installed in 1897 and cost \$32,680. The water is taken from Kaslo river and carried through pipes, sunk below the frost line, a distance of 9,400 feet to a covered

reservoir. The vertical height from intake to reservoir being 93 feet. The reservoir is built of concrete and is lined with asphalt. Its capacity is 230,000 gallons, while the inflow amounts to 500 gallons per minute. The system is so arranged that the city can be supplied direct from the conduit or from the reservoir as may be required. The average height above the city of the reservoir is 221 feet, which gives ample protection in case of fire. Street hydrants are placed at convenient points throughout the city. Every precaution is taken to stop any possible fire in its incipency. The municipal authorities have provided suitable buildings and a fire bell, hose carts, ladders and every necessary appliance for fire fighting. There are also a number of chemical fire extinguishers.

Bank of B. N. A.

The Bank of British North America is one of the oldest in Canada. A branch was established in Kaslo in January, 1897. It is the financial stronghold of the city and is located in a handsome, modern building especially erected for its purpose and is situated at the corner of Front and Fifth streets. A view of this building is given on page 42.

The city hall was erected in 1898 at an expense of \$11,000. It is an imposing and modern structure equipped with all the latest conveniences. The upper floor has been fitted up exclusively for the use of the county and other courts of justice, and is the finest court room in



City Hall.

British Columbia with the exception, perhaps, of the capital, Victoria.

The Provincial Government building is situated on B avenue. It is a large, roomy, modern office. Here are the headquarters of the Ainsworth Mining Recorder, Assessor and Tax Collector for the southwest Kootenay tax district, Registrar of the County Court, the Collector of votes and other Provincial officers. Following are the totals of business transacted by the Recorder of the Ainsworth Mining District for the year 1898:

Number of mineral claims recorded, 939; certificates of work issued, 1,346; payments \$100, lieu assessment work, 13; bills of sale, bonds, etc., 377; free miners certificates issued, 1,053; mining receipts issued, 2,032; number of notices sent out on mineral tax, assessed taxes and crown grant claims, 2,260; number of letters written during year, 2,035; certificates of improvement recorded, 54.

The Customs House Returns.

A good criterion of Kaslo's business is obtained from the following statement of the business transacted through the Custom House: Exports for six years ending June 30, 1898, amounted to \$17,487,000 on which dividends of some \$6,000,000 were paid. Imports amounted to upwards of \$9,000,000, on which duty of over \$310,000 has been collected. Most of the above was for mining purposes, and considerable mining machinery being duty free.

Kootenay Lake Sawmills.

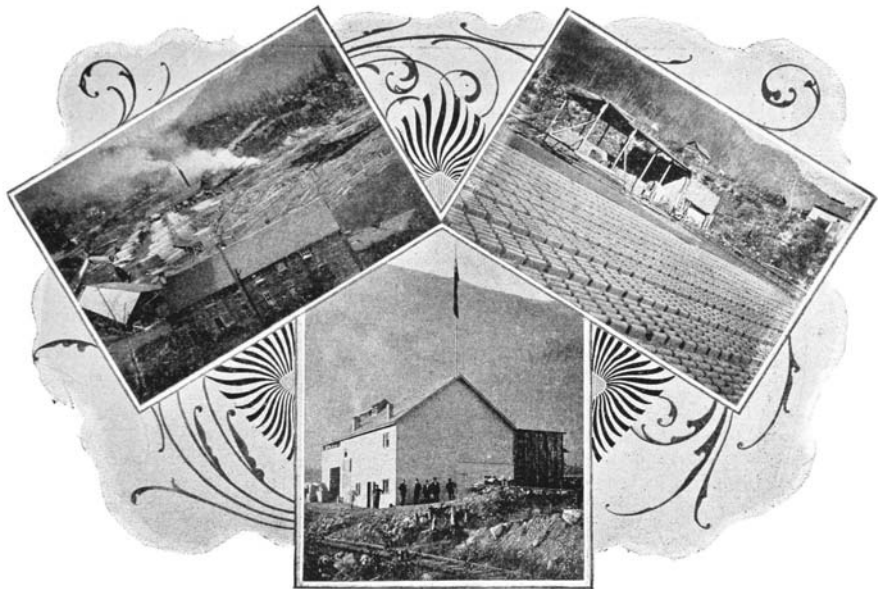
The extensive saw mill and manufacturing plant of Mr. G. O. Buchanan occupies an ideal site for such works at the head of Kaslo bay. The mill proper is a two-story building, size 60x130 feet, run by steam power, furnished by two boilers and two engines, of 150 horse power. Capacity per day 40,000 feet of long lumber, 12,000 lath and 30,000 shingles. At a distance of 400 feet from the saw mill, connected by a plank runway, is located the planing mill and factory—a two-story building, 30x100 feet, with dry kiln and lumber shed connected. A 45-horse power boiler and engine propels all the necessary machinery for planers, matching and moulding machines, etc. These works furnish employment for 70 men.

The Brick and Tile Yard.

Millington Bros'. brick yard is situated in the southwestern portion of the city. Here they have practically an inexhaustable quantity of the finest clay for their purpose. A modern brick making machine and all other necessities for the rapid and perfect manufacture of brick are on hand.

The Kaslo Brewing Company.

The plant of the Kaslo Brewing Company is located



Buchanan Mills.

Kaslo Brewery.

Kaslo Brick Works.

convenient to the Kaslo & Slocan railway track in the western portion of the city. They have a large and convenient building for their purpose and all necessary appliances for producing a first class quality of lager beer, ale and porter. The capacity of the plant is over 3,000 barrels a year, and a ready market is found in Kaslo and adjacent towns. Messrs. Band & Goodenough are the proprietors of the establishment.

Electric Light and Power Plant.

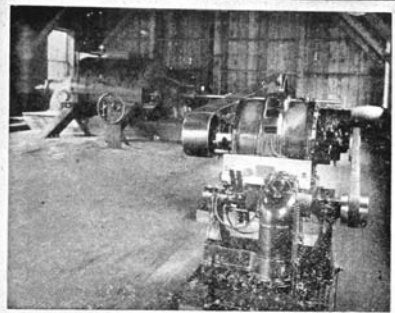
The Kootenay electric light and power plant is one of the most complete on the American continent. The machinery is entirely of Canadian manufacture. A heavy frame building 30x50 feet encloses the generating appliances, while a pipe line 1,500 feet in length and 45 inches in diameter conducts the water from the substantially constructed head gate on the north side of Kaslo river to the immense turbine which develops 300 horse power. Power and light can be transmitted for a distance of 30 miles from the works. The system is what is known as the S. K. C. alternating. Two generators and two exciters have a combined capacity of 4,000 volts or 3,000 16-candle power lamps.

Kaslo's well lighted streets and brilliantly illumined buildings are the admiration of all visitors. Most of the principal business buildings are also fitted with gas fixtures and in some cases carbide gas generators.

Kootenay Ore Company, Limited.

The extensive sampler building, size 60x80 feet, of the Kootenay Ore Co., Ltd., is advantageously situated on the north bank of Kaslo bay. It is built on the terrace plan so as to enable the ore to pass by gravity through its various processes. A spur of the Kaslo & Slocan railway connects with the upper part of the building, whilst a wharf owned by the company extends out into the bay, providing for the easy loading of ore, which has passed through the sampler, on the Kootenay lake steamers. The sampling machinery consists principally of the following: 9x15 Blake crusher, 14x24 steel Cornish rolls, 12x12 steel Cornish rolls, two Bridgman automatic sampling machines (the larger for taking samples from the entire mass of ore passing through the works and the smaller for reducing samples already taken), challenge ore feeder, sample grinders, Fairbank's track and other scales.

The motive power is furnished by a 150-horse power boiler and engine, steam also being used for heating and drying purposes. The works have a sampling capacity of 250 tons daily, and are so arranged as to be capable of extension to any required dimensions. There are quite a number of ore bins, thus enabling all lots of ore consigned to be kept entirely separate. These bins are sheeted with steel so as to ensure the ore being sampled from



Electric Light Plant.



Sampler.

becoming mixed with the remains of former lots. Convenient steaming chambers are provided for the handling of frozen ores. The works are lighted by electricity. The plan on which these works are operated are about as follows: Ores are received from the producers and accurately weighed, sampled and the contents and value determined. Should a car consist of more than one grade of ore, each grade will be sampled separately when desired. All sampling is carried out under the inspection of the owner of the ore should he desire it, and if wished, hand sampling will be substituted for the automatic process. It is optional with the owner whether he has his ore resacked and shipped to another market or not. Should he desire, the company will purchase the ore on the day of sampling, paying cash therefor, thus saving the time and expense of waiting for smelter returns. Ore can be shipped to the works in bulk, which saves the cost of breaking and sacking at the mine. Including the unloading, weighing, sampling and sacking the ore, the company's charge is only \$1.25 per ton.

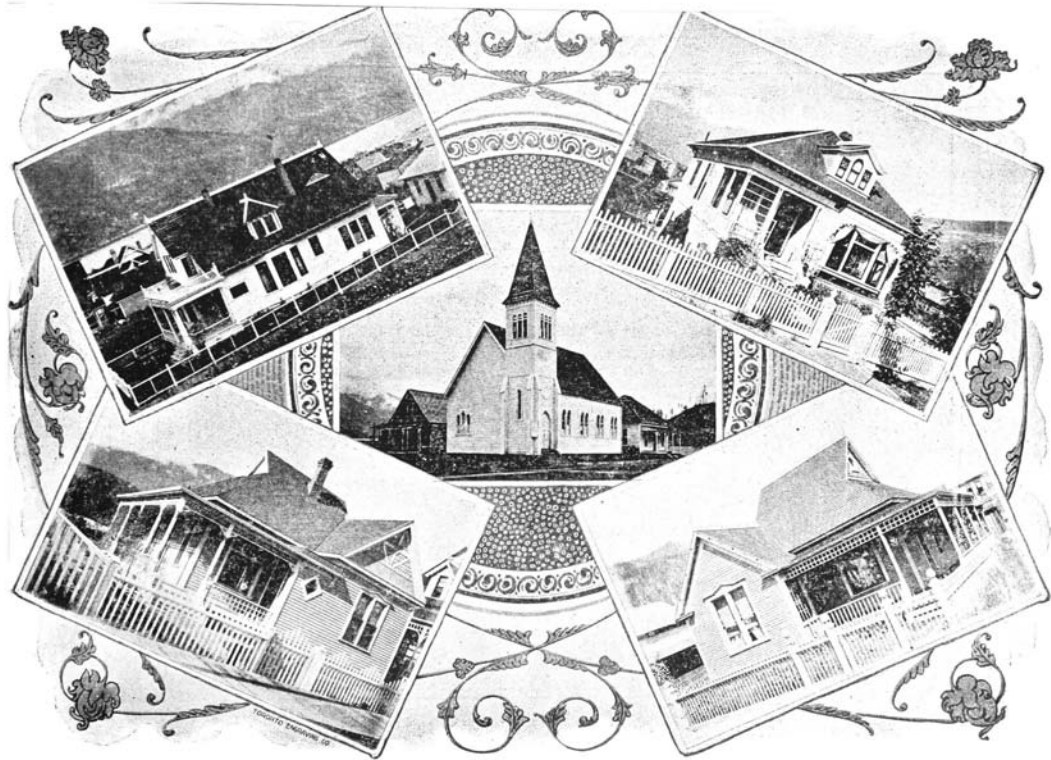
A Desirable Residential City.

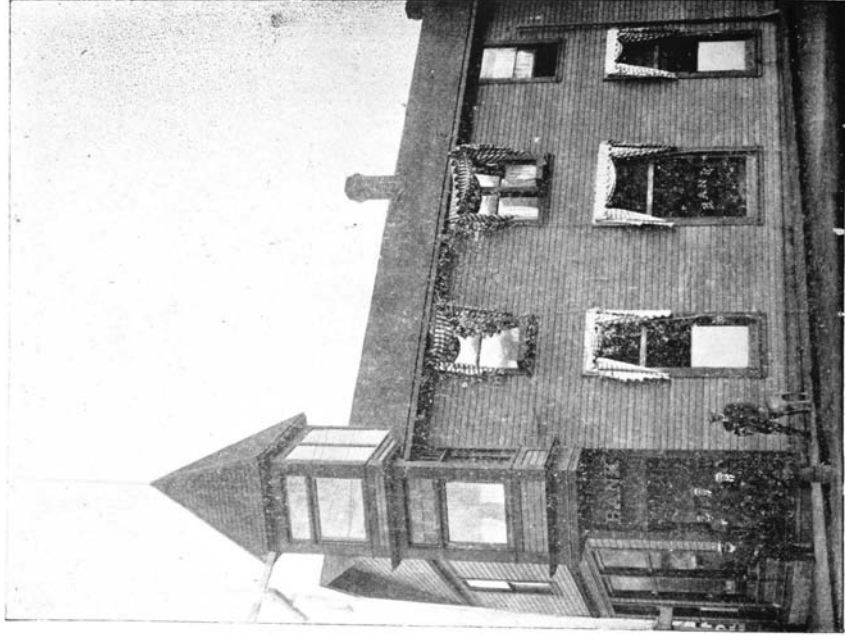
The situation of Kaslo is most beautiful and attractive. Located on the west shore of Kootenay lake, at the extreme eastern base of the famed Selkirk range, partially surrounded by verdure clad, snow-crowned mountains, rising to towering heights and in many instances forming

into lofty peaks not unlike tapering spires which appear to penetrate the heavens. Writers and poets who have visited Kaslo have endeavored in prose and in verse to describe the beauty and the grandeur of its scenery. So romantic is the environment, so pure and invigorating the air, so wonderful the scenic beauties and so grand are the gorgeous sunsets that the visitor views with admiration and delight, and longs for a permanent home amidst such varied scenes which please the eye and inspire the soul.

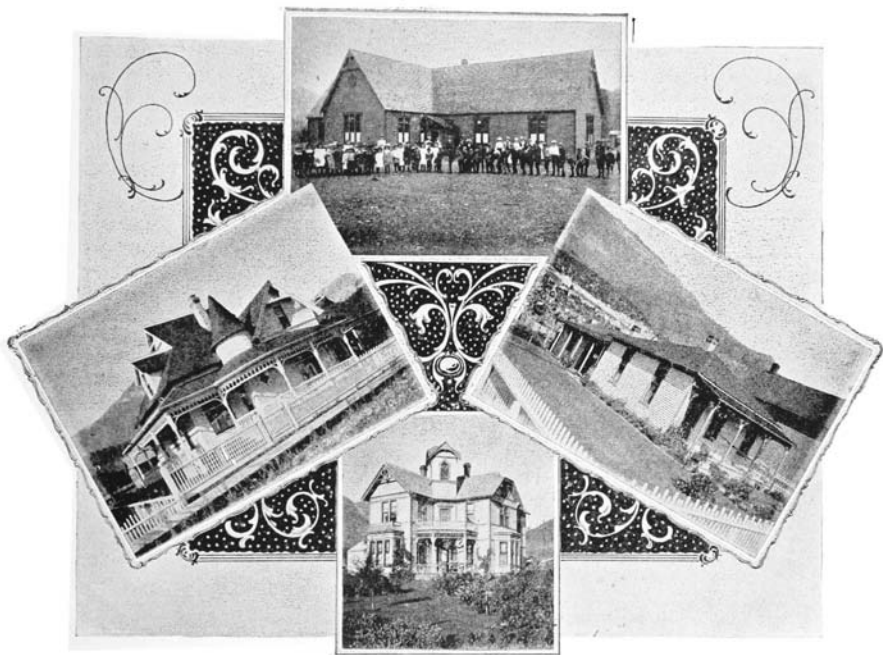
Cleanliness and strict attention to every necessity conducive to health is scrupulously observed by those in authority, consequently in the eight years of the city's existence there has been but 31 deaths from all causes and most of these subjects were brought from a distance to be treated at the two city hospitals. The cosmopolitan population consists of a pushing, energetic people.

The Presbyterian, Methodist, Church of England and Catholic churches all have modern edifices. Two lodges of the Masonic order, a Court of Forresters, together with a tent and a hive of Maccabees, are among the secret and fraternal organizations. The public school building will rank among the best in the Province and the school is presided over by a most capable principal and corps of assistants. It has been stated in the first part of this souvenir that Kaslo is the only city in West Kootenay from which any mining camp can be reached in one day. This fact caused the principal mining operators and mine managers to establish their homes in





Bank of British North America.

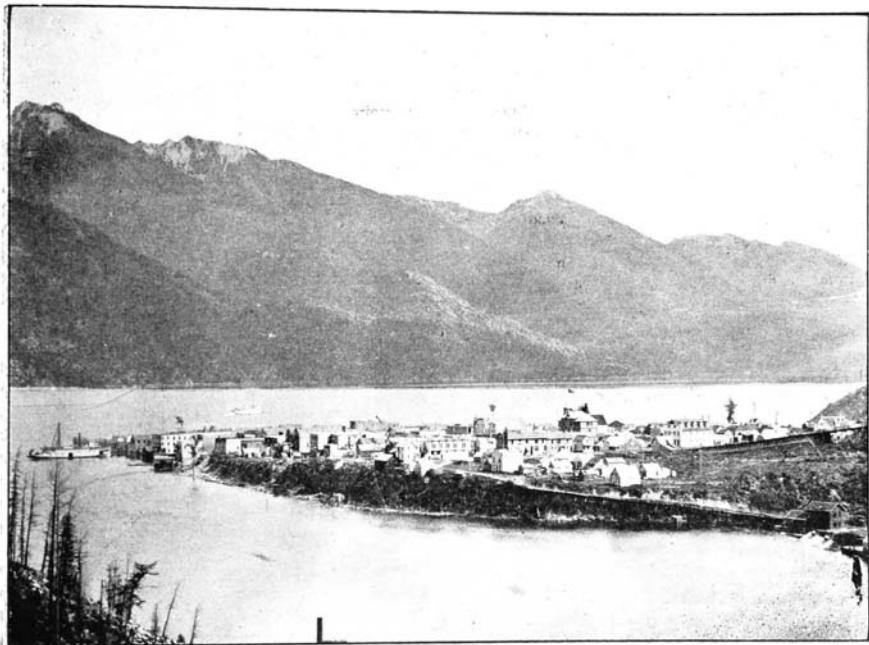


Kaslo Residences.

Kaslo even in the early days of the district, or the city's history. Hence besides being a city well supplied with temporary homes for the transient, the health or pleasure seeker who desires to make a limited stay, it is also a home to those of wealth and refinement whose vocations make it necessary for them to have the comforts and pleasures of home near where their business operations are carried on. Kaslo is well supplied with charming and picturesque dwellings furnished with every modern convenience. Nowhere can more beautiful sites for permanent places of abode be secured. On the higher plateau, west of the business portion of the city, there are many elegant locations where unequaled views can be obtained. Across the lake the towering mountains of the Purcell range loom up "grand, gloomy and peculiar." In several of the basins of this range, immense glaciers are in plain sight which in the bright sunlight show iridescent beauties of color on a far grander scale but not unlike the changing rays of a kaleidoscope. Viewing the natural grand panorama of the Purcells from Kaslo, one can, in imagination, form the rugged mountains at their greater altitudes into fantastic shapes. Some are not unlike old cathedrals, with heaven pointing spires, and others resemble ancient castles with tower and parapet still standing. Gazing still along the foliage of the ever-green covered slopes, creeks and cascades come into view which, at the distance from where they are seen, appear like bands of burnished silver.

Tourist and Summer Resort.

There are tens of thousands of persons on the American continent and many more in the old world, across the sea, who each year have a longing for a change. They desire some situation that is healthy, where the scenery is grand and varied and where they can have any number of diversions and amusements. Kaslo, which a gifted writer has aptly described as "the Lucerne of America," although a comparatively new place, as an ideal summer resort, has no compeer. Many thousands of persons have visited and revisited the effete resorts of the world and grown weary of their attractions. To such and others we would suggest that they take a tour through the famous West Kootenay district and make Kaslo their base of operations. This is a section entirely free from all contagious diseases, while the wonderfully invigorating air acts like magic in restoring mental and bodily vigor to those suffering from any complaint. There are no extremes of heat and cold, no severe storms and such meteorological disturbances as cyclones or tornados are unknown. Pure water abounds on every side, and should the health or pleasure seeker desire, they can drink from mineral springs whose waters are the finest in the world. Well graded roads lead out from the city in different directions where a drive can be taken, a trip on horse back, or a spin on the wheel. Sailing, rowing or canoeing on the



Kaslo City From the Northwest.

lake are delightful and healthy amusements their charm can be augmented by trolling or fly fishing as the waters are prolific with specimens of the finny tribe.

Should longer excursions be desirable, animals and guides can easily be obtained and excursions can be made over the different trails to the immense glaciers or to the summits of the many peaks, several of which are within plain view of Kaslo.

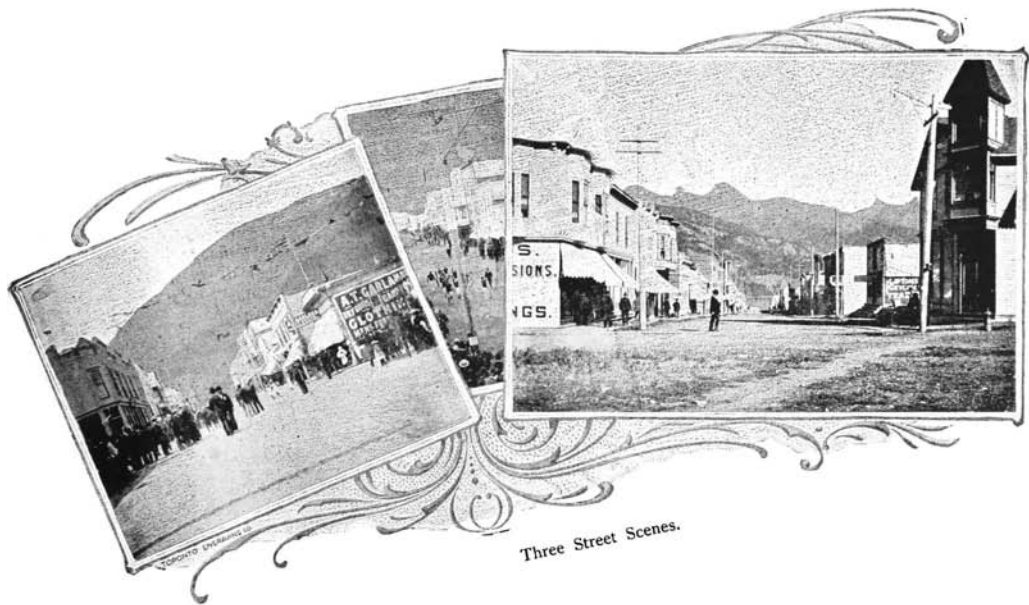
If any have a wish to study the more practical side of the attractions which Kaslo has to offer, they can visit and inspect the neighboring mines and mills where object lessons can be had from the first discovery of a prospect on through the various stages of developing a mine, extracting and manipulating the ores until the metallic contents are turned out of the smelter in bright, shiny bullion.

The tourist will find first-class hotels, luxurious lodging houses and well appointed restaurants. Should it be preferred, camping out is a pleasure which can be enjoyed. There are hundreds of lovely spots where a summers camp can be established—in fact so many charming places that they are too numerous to describe in this article.

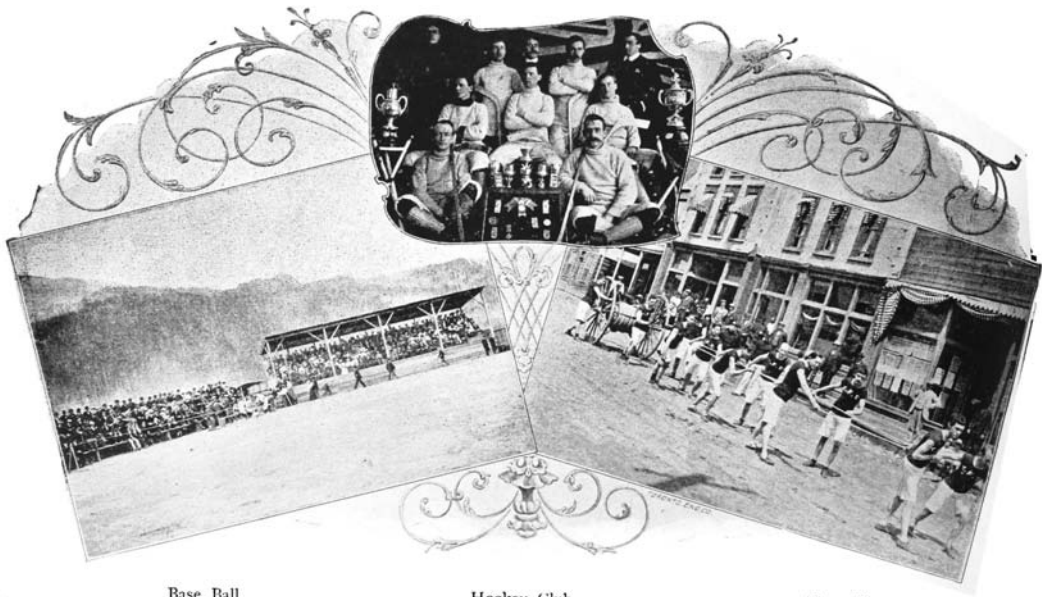
Supplies of both staple and luxurious articles can be had from local dealers at prices as reasonable as they can be obtained anywhere, and with the addition of the game and fish products of the district the pleasure seeker can here enjoy all the advantages of civilization.

Sports.

There is scarcely an item in the list of sports that is not included in the repertoire of which the enthusiastic sport loving people have availed themselves. No matter the sex or from what clime in the civilized world a person may have come, they will find some game or games or methods of contest in endurance and skill with which they have been familiar in their former places of abode. On all sides throughout the city and suburbs evidences of permanent places of recreation are in evidence. A large skating rink is one of the features. The central portion of this immense building is used by the skaters while on each side are alleys portioned off for hockey games and curling. On top of the plateau overlooking the main portion of the city and lake are the base ball grounds. Not far distant therefrom, but in a more isolated spot, is the rifle range used by the Kaslo shooting association and the Kaslo rifle club. Two excellent clay courts for the lovers of lawn tennis are also provided, and a thoroughly equipped gymnasium will soon be one of the attractions. Some of the most expert sportsmen in British Columbia abide in Kaslo, and many are the trophies they have won at contests in neighboring towns. The champion skater of the Province, a Kaslo man, won all races in which he took part during the past two winters. A football association is among the sporting organizations where on afternoons, in the proper season, enthusiastic



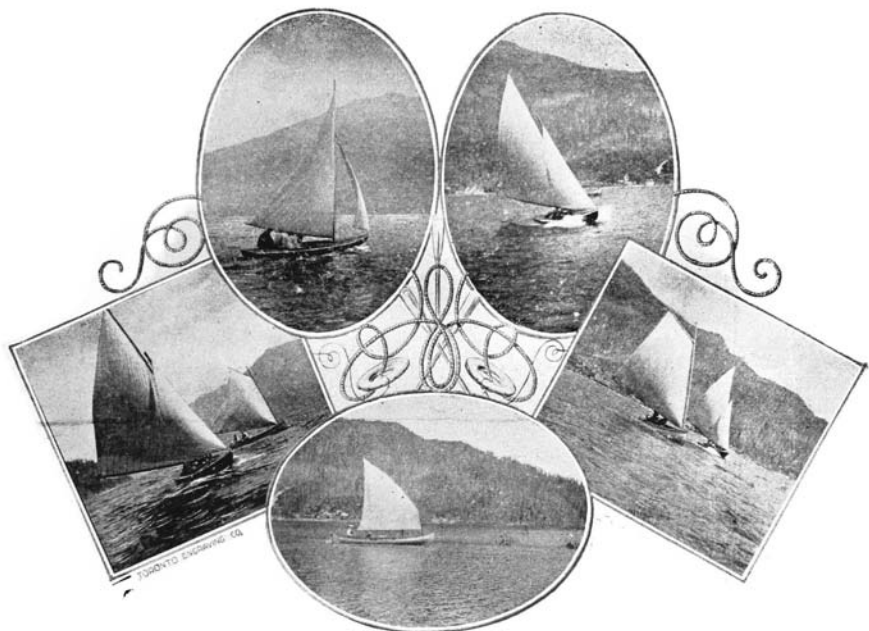
Three Street Scenes.



Base Ball.

Hockey Club.

Hose Team.



Sailing on Kootenay Lake

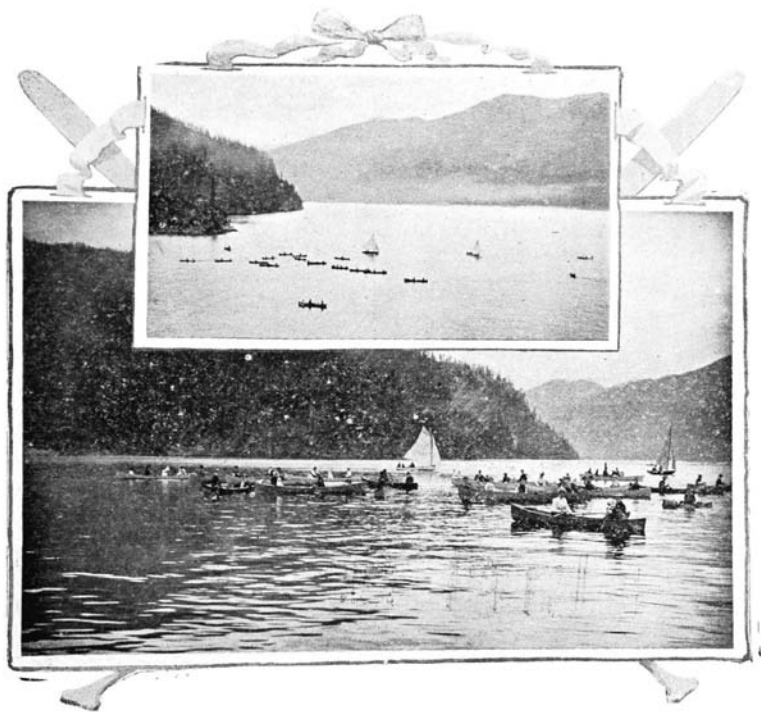
Britishers can be seen practising punches and drop kicks with a Rugby ball. There is also a swimming club who daily, during the season, indulge in their favorite pastime in the lake or in the more tepid waters of the sheltered Kaslo bay. See illustration on page 52.

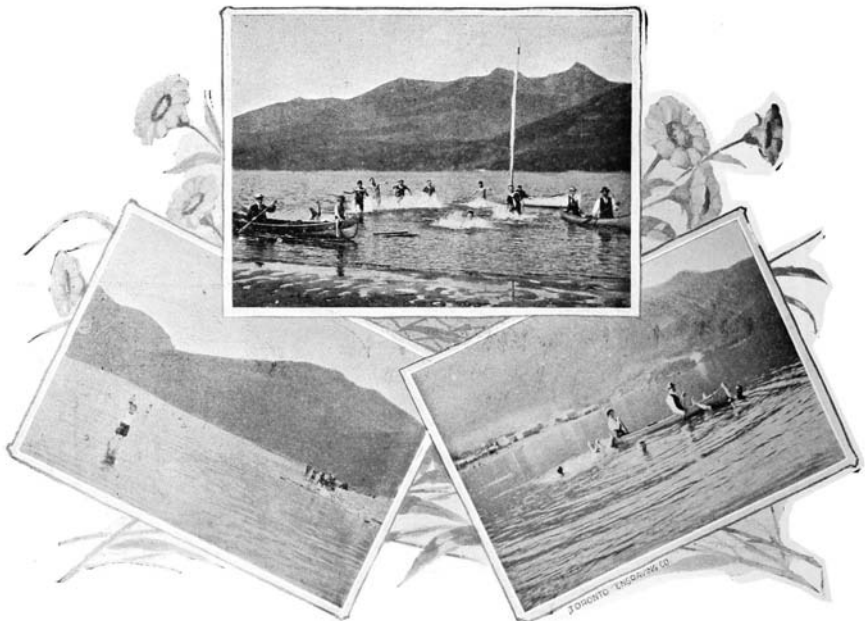
Divided into classes the favored sports of the gentlemen are base ball, hockey, lacrosse, hose reel races and football, while those for the ladies are sailing, boating, lawn tennis, bathing and skating. See pictures on pages 48, 49 and 53.

For all aquatic sports ample provision has been made. There are yachts, both sail and steam, sail boats, row boats and canoes without number owned by private individuals, among whom sailing, racing and canoeing clubs are features. Illustrations of many of these amusements can be seen by referring to page 51. For the accommodation of those who are so unfortunate as not to own a craft of any kind, and for temporary sojourners, boat houses are provided where any kind of launch can be secured for any length of time. Boating picnic parties on Saturday afternoon on Kaslo bay and on the lake are popular sources of relaxation, and all kinds of beach sports are indulged in, principally by the younger generation. Views of which are shown on page 53. On gala days, such as the birthday of the Queen or other holidays, all kind of sports are indulged in, sailing, rowing and canoe races for prizes are some of the chief attractions.

Leading out of Kaslo in several directions are well

graded wagon roads from which the grandest scenery can be viewed. On these thoroughfares carriage drives, horseback trips or runs on the bicycle can be made. These are diversions that many avail themselves of. The many sports embraced in the list of Caledonian games are quite popular and much in evidence on holidays. For the more practical kind of sport, such as hunting and fishing, the enthusiast with the gun or rod can find no better place to bring into use his acquirements. There are plenty of cariboo, mule, black and white tailed deer within reasonable distance of Kaslo, and any number of ducks and geese frequent the shores of the lakes in the fall. Grouse of the different varieties can usually be found in plenty in the valleys, on the benches and the mountain sides. By climbing to higher elevations, bear, goat and mountain sheep can be secured. On page 55 a picture of game heads is given, the animals being killed near by and mounted at Kaslo. This is only one of the numerous collections to be found here while many have been sent abroad. There is scarcely a time during the year when one cannot subsist on the proceeds of his rod and gun. In fishing the sportsman has quite a number of varieties of the finny tribe to choose from. The trout of the lake and larger streams are what is known as salmo purpuratus; they weigh from one to twenty pounds and are taken with the fly. By trolling in the deep waters of the lake salmon trout and char, weighing as heavy as thirty pounds are caught. During the summer months





Bathing Scene on Kaslo Beach.



Popular Beach Sports.

in many streams emptying into Kootenay lake, spearing a peculiar red fish of the trout species, called by the Indians "Kokanee," is quite an amusement. Long strings of these are frequently seen. All streams entering Kootenay lake abound in mountain trout. Snap shots of fishing trophies are shown on page 56, taken on the return of the anglers from Kaslo, Woodberry, Campbell, Fry, Schroeder or other creeks in the immediate vicinity of Kaslo.

Among her other matchless resources, Kaslo is exceptionally favored in her valuable mineral springs. It appears as though a beneficent nature has distributed these natural health fountains over the surface of the earth and placed them where there they will be of the greatest benefit to mankind. The Kemp Springs property cover six or more large flowing wells containing many beneficial mineral ingredients. A copy of an analysis made by Mr. A. H. Holdich is given below:

Temperature of water, 38 degrees F.; total solid matter at 210 degrees F., 106 grains per gallon consisting of lime carbonate, 83.50 grains per gallon; magnesia, 12.85 grains per gallon; soda, 5.50 grains per gallon; potash, 0.40 grains per gallon; iron, 0.56 grains per gallon; sodium chloride, 1.20 per gallon; lithia, phosphine acid, silica and alumina, 3.20 grains per gallon; total grains 107.21.

"I consider this a most valuable medicinal water, and being so highly charged naturally with carbonic acid gas, it is also exceedingly palatable. No poisonous metals are present."—Mr. Holdich.

To Our Readers.

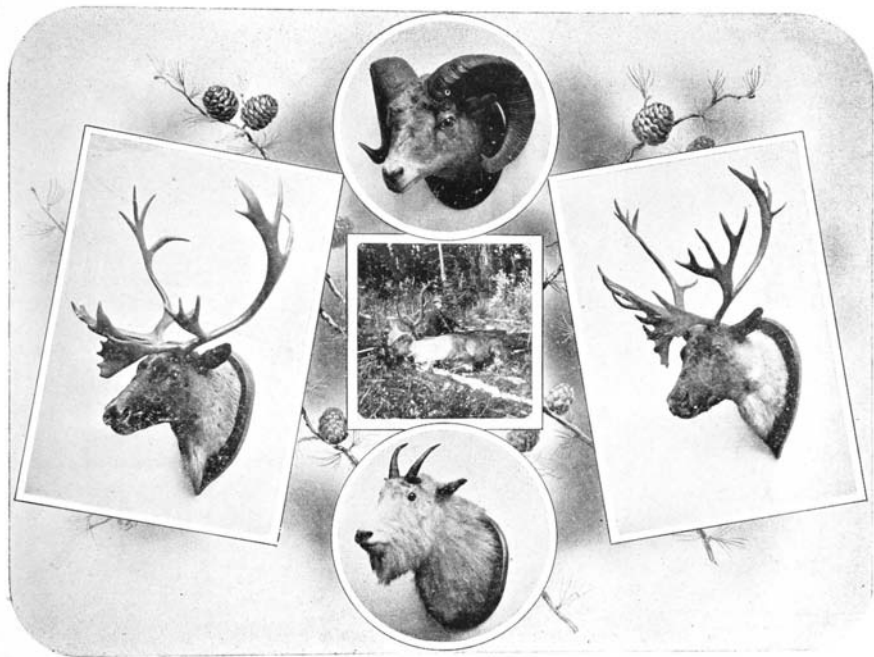
The committee in presenting this souvenir wish to intimate that to do justice to any one of the sub-divisions into which this book is divided, where the possibilities are such that if properly described and illustrated each subject here briefly touched upon, would require a book many times this size. The many mining camps which are grouped on the smaller creeks that flow into Kootenay lake in the vicinity of Kaslo, comprising in numerous instances, from fifty to one hundred mines and prospects, the committee have been unable to refer to, the difficulty of obtaining reliable data and suitable illustrations of hundreds of these properties have prevented their introduction into a work which the committee confidently place before the public as being authentic and reliable. In no case has there been any intention of giving any undue prominence to any particular department of the publication, but we have studiously avoided overstating the conditions and possibilities of a district possessing so many and varied attractions.

In conclusion we beg to thank the many amateur photographers to whose artistic work we are indebted for many of the illustrations.

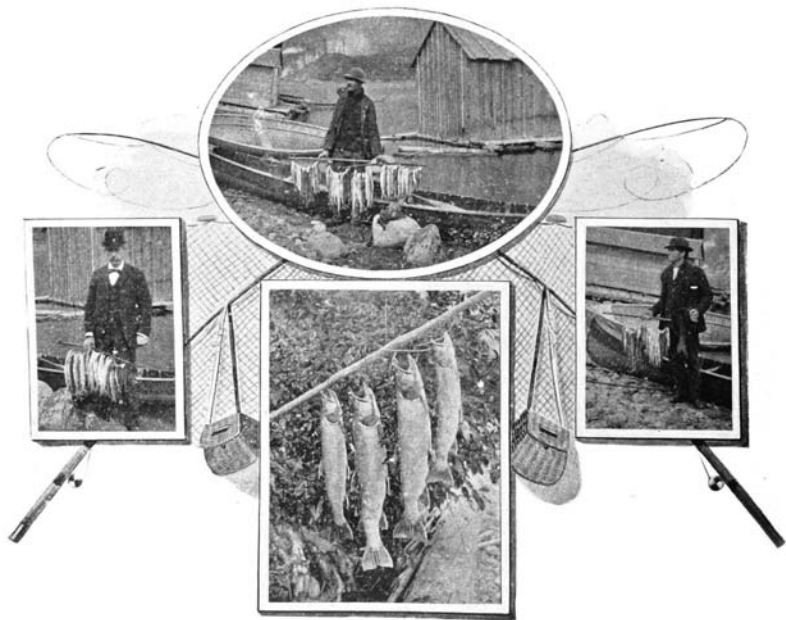
Most respectfully,

J. W. M. COCKLE,

Chairman Committee.



Game Heads.



Snap Shots.



Ainsworth.



Kaslo Custom House.



Sandon Store.

The firm of H. Giegerich carries the largest and most complete line of groceries, provisions, miners and mining supplies suitable to family and mining trade that is shown in the Kootenay country.

Shipping all their goods in carloads or large lots enables them to serve their customers in the most complete manner, carrying large quantities, a varied assortment, good qualities and at reasonable prices.

They were the first shippers of St. Charles Cream, Goodwin Mining Candles and like goods in CAR LOAD LOTS in this district, having shipped a car load of 500 cases of St. Charles Cream into Kaslo early in 1893, when Kaslo was in its infancy and when 50 to 100 cases were supposed to be a large shipment. This firm is the agent for the Goodwin Mining Candles, famous wherever

mining is done, also the Giant Powder Company, manufacturers of Giant, Judson and Stumping Powder, Fuse and Caps.

They are at all times pleased to show any one through their large establishments and invite inspection at any and all times as they are justly pleased with the class of goods handled, being at all times able to satisfy the most fastidious.

Their stock of furnishing goods is complete in every detail, special attention being given to the needs of miners and prospectors.

This firm was first established at Ainsworth in 1891. Kaslo a year later and Sandon in 1895, where they are continuing to add new customers to their already extensive business.



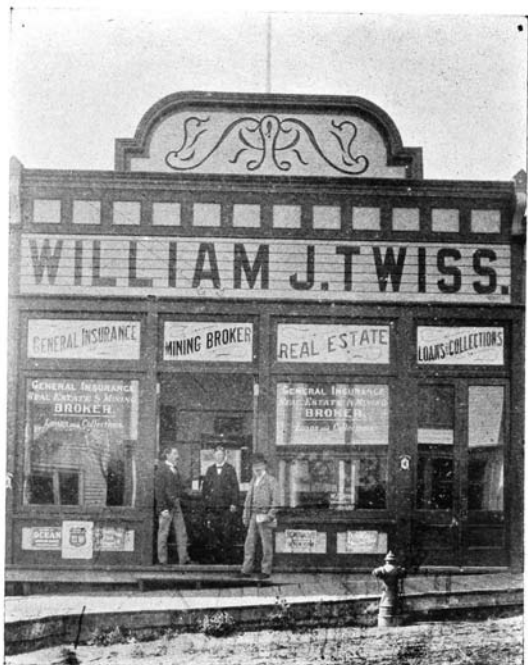
Kaslo Store.

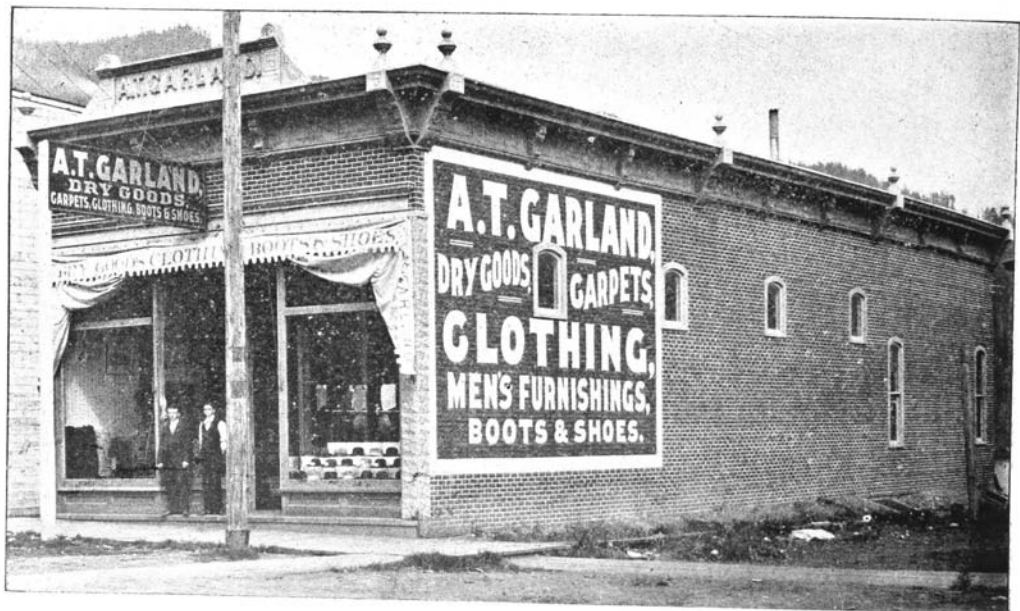


The Archer-Hartin Block, corner of Front and Fifth streets, is one of the results of persistent application to business by Mr. F. C. Archer and Dr. Hartin, the former being a pioneer in the city, winning and holding the respect of all. Dr. Hartin is Mayor of Kaslo and is equally extolled professionally and socially.

W. J. Twiss, Notary Public, Broker and General Agent, is a specimen of a British Columbian who by strict attention to business and an upright manner has achieved an astonishing measure of success in his own particular line. His district embraces the greater part of the Kootenays, and he is also most intimately associated with the citizens of Kaslo and district. Correspondents will consult their interests by communicating with him regarding any business they may wish attended to in this busy part of the Province. Mr. Twiss represents the following companies:

The Mutual Life Insurance Company of New York, The London and Lancashire Fire Assurance Company, The Northern Fire Assurance Company, The Caledonian Fire Company, Manchester Fire Assurance Company, Canadian Fire Assurance Company, The Ocean Accident and Guarantee Corporation Limited, The Provincial Building and Loan Association, Equitable Savings and Loan Association, The Identification and Protection Company of Canada and The Great Northern Express Company.





The general Dry Goods business is well represented in Kaslo in the establishment of A. T. Garland. His store, which is 25x80 feet with a well lighted basement the full size of the building, is fitted up in the most modern style. Besides importing direct Mr. Garland makes two purchasing trips a year to eastern markets and his stock is consequently most complete and up to date.



G. A. Carlson,

Railroad Contractor and Builder

Kaslo & Lardo-Duncan Railway.



The Kaslo Drug Store, corner
Fourth and Front streets.
J.W. Livers, Druggist.

o—o

S. Schwander, Jeweler and Optician,
graduate of Geneva Swiss Watch
Manufactory. Expert on fine
movements.



A. H. Brown,

Men's and Boys'

Boots and Shoes and

Rubber Goods.

Miners' and Prospectors' Goods

A Specialty.



Our next engraving shows the large and commodious store of the Kaslo Dairy, Produce and Provision Co., where an extensive retail grocery business is carried on. The completeness of their stock and excellence of their goods bring all classes here to buy their supplies. The thrifty housewife, the railroad contractor, the woodchopper and prospector alike find their interests conserved and their wants supplied. Alfred McQueen is the proprietor. Here is also the office of the Florida Mining Company.



Mr. M. V. Adams, the genial proprietor of the Leland, is a general favorite and the public are sure of cordial welcome at the Leland.



Smith,
Photographer,
Portraits and Landscapes.
Kaslo, B. C.
Fourth Street,



Mr. G. Minielly
has a most complete
stock of
Groceries,
Fruits and
Confections.

Two years ago
Mr. Minielly began
with no other capital
than his own upright
reputation.

Today, he owns
this fine Building
and has a most
prosperous
business.



The Queen
Restaurant, owned by
Mr. Minielly, is
Always
Ajar
for the satisfying
of the appetites of
hungry Kasloites and
transient visitors.

The cuisine
is in the hands of
most capable Chefs
and the most
fastidious can here
please all
desires.





W. B. Livingstone,
is the pioneer leather
merchant of West Kootenay,
having started in business the spring
of 1892. He carries a large line of har-
ness, shoes, rubbers, valises, etc., and is in-
terested in a number of mining proper-
ties. He is a firm believer in the
future of Kaslo and the
Slocan Country in
general.





P. McGregor, Transfer and general delivery. General merchandise, baggage, etc., handled carefully. Saddle Horses, Covered Carriages, Cutters, etc., for hire.



Messrs. Murchison & Desmond, the proprietors of the Auditorium, need no commendation. They are general favorites.



Messrs. Lamont & Young carry a complete stock of

- Books,
- Stationery,
- Wall Paper,
- Periodicals,
- Blank Books,
- Silverware,
- Jewelry,
- Souvenir Goods,
- Sporting Goods,
- Musical Instruments.

This firm is represented in Kaslo by D. J. Young, a popular young man who has gained the patronage of British Columbians by his unflinching good nature and accommodating manners. Their stock is most complete and in connection with their other branches they are in a position to furnish all demands.



Kaslo Transfer Co. Express, Dray and Moving Wagons. Pack and Saddle Horses for hire. Feed stable in connection. Also dealer in Wood, Coal, Ice and Feed. Orders promptly filled. H. Black, Manager.



Mr. D. M. McPhail, owner of the above block, is a young man who in a few years has become a leading citizen and property owner of Kaslo. He conducts most successfully a tailoring establishment carrying complete stocks in his line.



L. F. Stephenson, Chemist and Druggist. Graduate of Ontario College of Pharmacy.



The
English
Kitchen,
managed by
MR. PAUL ALEXANDER,
is one of the features
in the catering
Line of
Kaslo.



The English Kitchen.

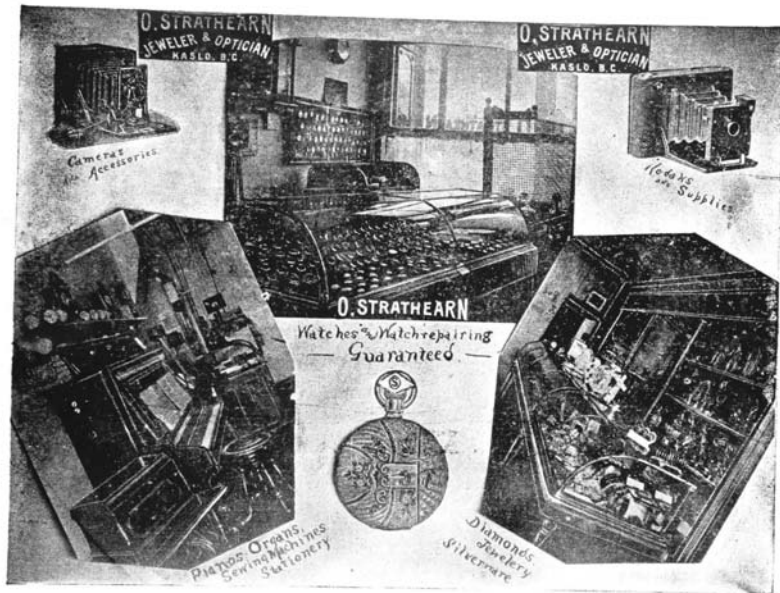


Here are
served all the
freshest products
of the dairy and farm.
The specialty of Mr. Paul
Alexander is the serving
of choice dishes in
the most palat-
able style.





J. D. Keenan, general blacksmith and wheelwright. Horse shoeing a specialty. He handles all kinds of shipwork.



The owner of the above establishment, Mr. O. Strathearn, deserves and has received the commendation of the public for his many estimable commercial and social qualities. His stock is most complete.

R. S. GALLOP,
Mining Broker.
Mining Properties
Examined and
Reported on.
Satisfaction
Guaranteed.
Best References Furnished.



East Kootenay
Gold,
Silver and Copper
Properties for Sale.

Cable Address:
R. S. Gallop, Kaslo, B. C.,
P. O. Box 28.
Bedford-McNeil Code.



Mr. Gallop is a pioneer citizen of Kaslo and is known in mining circles as a conservative and most reliable authority.

Judging from present indications Mr. Gallop's future in British Columbia is most promising and he will be very successful.



Mr. T. Pogue has one of the most select stock of Fruits, Confectionery and Smoking Goods to be found anywhere.

Mr. Pogue makes a specialty of carrying leading and standard brands of Tobaccos and Cigars and connoisseurs can here indulge in their most critical moods.



Pogue's Store.



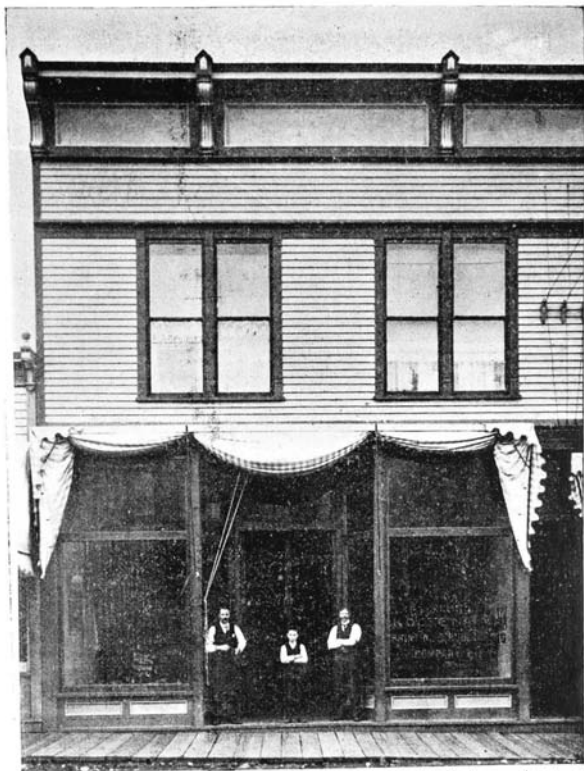
Kaslo Store.

P. Burns & Co.,
Wholesale and Retail Meat Merchants.
Head Office, Nelson, B. C.

Markets at:—

Kaslo,
Ymir,
Nelson,
Sandon,
Cascade,
Midway,
Grand Forks,
Trail,
Rossland,
Revelstoke
Greenwood,
Slocan City
and
Three Forks.





The KOOTENAIAN is the official newspaper of Kaslo, has a large and growing circulation and covers a field of usefulness in giving all the local and mining news of the city and district. THE KOOTENAIAN PRINTING AND PUBLISHING COMPANY, LIMITED is composed of a large number of the business men of Kaslo, with Wm. P. Evans editor and manager. The Company have one of the most complete printing plants in British Columbia, as the work in this souvenir will testify. They excel in commercial job and poster work of all descriptions.



Charles F. Caldwell.

Mining Broker.

Mr. Caldwell is one of the early prospectors and residents of Kaslo, and like all those who have remained unshaken in their belief of the future greatness of the city of their adoption, he is now reaping the harvest of his investment.s



Charles H. Evans,
Insurance,
Loans:
Mining Agent,
Properties for Sale.
Office, Front Street,
Kaslo, B. C.





Full line of fancy and staple groceries always on hand.
Fresh fruits a specialty. Wedding, birthday and fete
cakes made to order. A large and varied
assortment of fancy confectionery, bonbons, etc.,
always in stock.

Established 1893.
Rebuilt, (entire brick), 1896.

Riedel & Kuester,

Front Street, Kaslo, B. C.

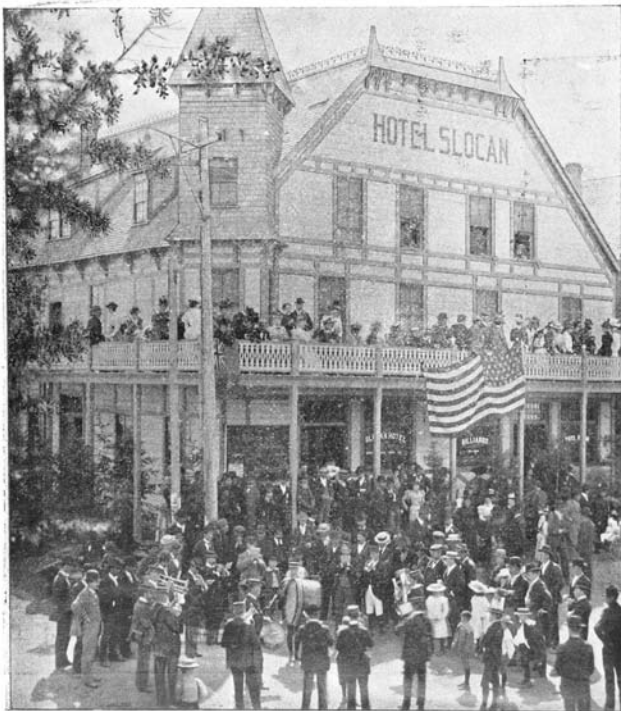
General Grocers,

Fruiterers,

Bakers and

Confectioners.

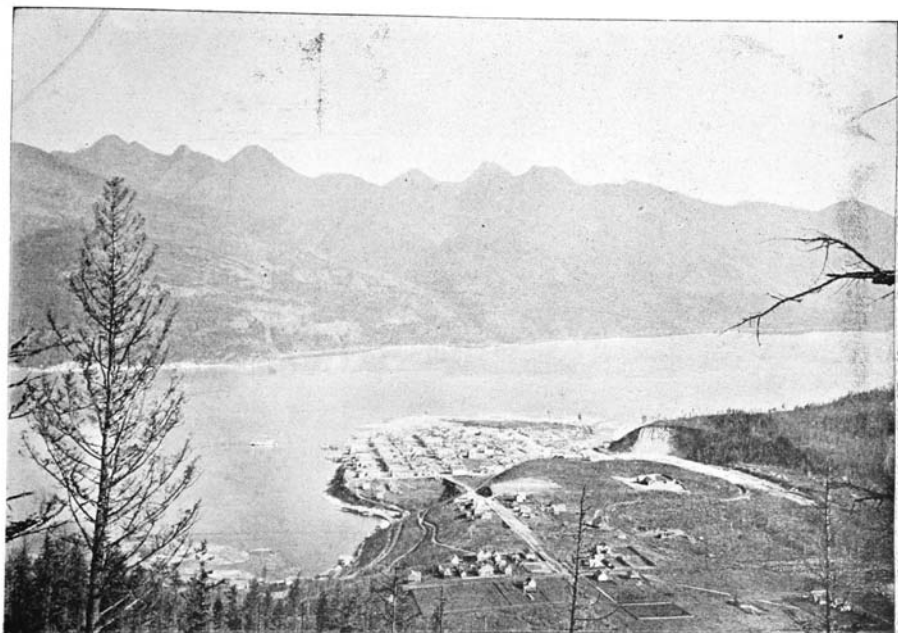




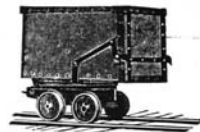
E. Cummings.

This commodious and popular family and commercial house is the property of Mr. E. Cummings, who is known all over British Columbia by the travelling public who appreciate the hospitable and kind treatment received at his hands. The cut shows the band serenading the guests. Mr. Cummings is proprietor of the only bonded warehouse in this part of the country for the storing of foreign goods. He carries a complete stock of the finest liquors, cordials, wines and beer. He is also agent for leading brands of cigars. This warehouse is a great convenience to the public, enabling them to buy on short notice special lines of goods otherwise not obtainable.





Kaslo Looking East,



The Pioneer Hardware Merchants
of the Slovan,

H. BYERS & CO.,

Have large stores in

Kaslo, Nelson and Sandon.

They handle large quantities of
Mining Supplies,

Rails,

Coal,

Ore Cars,

Giant Powder,

Caps and Fuse,

Drill Steel,

Sheet Iron Stoves and Ranges,

General Hardware,

Plumbing and Tinsmithing.

H. Byers & Co.,

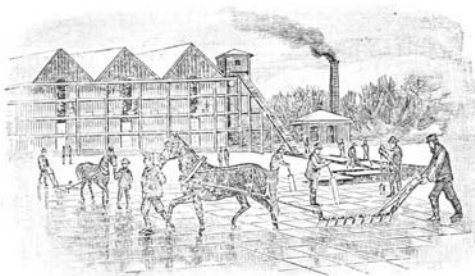
Agents Traux-Automatic Ore Cars.



Miss McLeod carries a stock of
Millinery,
Ladies' Suits and
Fancy Goods,

Second to none in the Kootenays.

Miss McLeod makes periodical visits to the
Eastern fashion resorts and keeps in touch with
all the latest designs and styles.



The Mirror Lake Ice Company was formed by Charles
Bjorkness in 1895 and has a steadily increasing
business, now having depots established
at Kaslo, Nelson and Sandon for
handling their ice product.

Mirror Lake is situated about one mile from Kaslo,
near Kootenay Lake, and produces the cleanest
and best ice that is marketed in the Kootenays.

They make a specialty of filling con-
sumers ice houses on contract
and supplying the railroads
and steamboat trade.

View From Silver King Hotel.



The Silver King Hotel, owned by Otto Augustine, is one of the leading mining resorts of the district. Mr. Augustine, a stalwart representative of Sweden, has become most favorably known by the traveling public as an accommodating and generous host. His hotel is most comfortably fitted with modern conveniences and his bar stocked with the choicest brands of liquors and cigars. Mr. Augustine is like most of the business people of Kaslo City, a staunch believer in the permanence of our mining industry and is interested in mining properties that under proper development will make him a leader in moneyed circles.

Kaslo and Slocan Railway Company.

Several Thousand Acres

Of the best agricultural lands in West Kootenay for sale. Very favorably situated on the Kootenay, Lardo and Duncan rivers, and on the lines of the Bedlington & Nelson Railway, Canadian Pacific Railway and Kaslo & Lardo-Duncan Railway.

As all these lands are situated within easy access of the ever growing and best mining camps of British Columbia, an excellent market is assured for all the products of the farm.

The limited area of available agricultural lands in West Kootenay virtually guarantees good prices for all products. This, in connection with the facilities offered by transportation companies, render the purchase of the Company's lands an excellent investment.

Special inducements to actual settlers.

Also lots in terminal townsites and valuable timber limits.

J. H. GRAY,
Land Commissioner,
Kaslo, B. C.

W. N. BRAYTON,
General Agent,
Land Department.

ROBT, IRNING
Manager,
Kaslo, B. C.

Mr. A. Fletcher, the senior member of this firm, is the pioneer hotel man of Kaslo, having been proprietor of the Grand Central Hotel, at one time the leading hostelry in the Kootenays, which was destroyed by the fire of 1893, but on the ruins Messrs. Fletchers have the popular Club Saloon and are continuing to hold the patronage and respect of all.

Mr. H. Fletcher, the junior member of the firm, is chief of a most efficient Fire Department and his smiling face is a welcome addition to all circles.



The Club Saloon.
Fletcher Brothers, Proprietors.



**O. C. Stone,
General Broker,
Kaslo, B. C.**

Agent for the Kaslo City Townsite, The Townsite of Cody, The Townsite of Lardo, and sub-agent for Kuskonook, Argenta and Duncan City Townsites—all situated in the famous Kootenay Mining District.

**Mining Interests Bought, Sold and Bonded,
Customs Brokerage a Specialty.**

**Real Estate,
Fire Insurance, Etc.**



Mr. R. Elliott carries a complete
stock of

Carpets,

Furniture,

Draperies,

Mouldings and

House Furnishings in all lines.



He has been a pioneer in this line
in Kaslo, beginning in a small
way he has now a stock
occupying three
floors in

this fine block. Mr. Elliott's stock is
most varied in style, quality and price.



Civil Engineer and Provincial Land Surveyor
W. J. H. Holmes,
Honours Graduate 1891 of the Royal Military
College of Canada.
P. O. Box 82, Kaslo, B. C.



J. E. Bigham,
Mining Broker
and Operator.

A. McCallum,
Jobber of all kinds of Farm
and Dairy Products.

D. C. McGregor,
Contractor and Builder. Plans and estimates
for every description of buildings.

Mr. N. M. Watnee is the leading painter and sign writer, paper hanger and general house finisher of the city. Mr. Watnee, although a comparatively new comer, has by conscientious industry won the respect and patronage of a large circle. He is a good citizen and is public spirited in every sense of the word. Kaslo has a cordial welcome waiting for many similar would-be residents. Mr. Watnee's artistic work possesses merit of a high order.

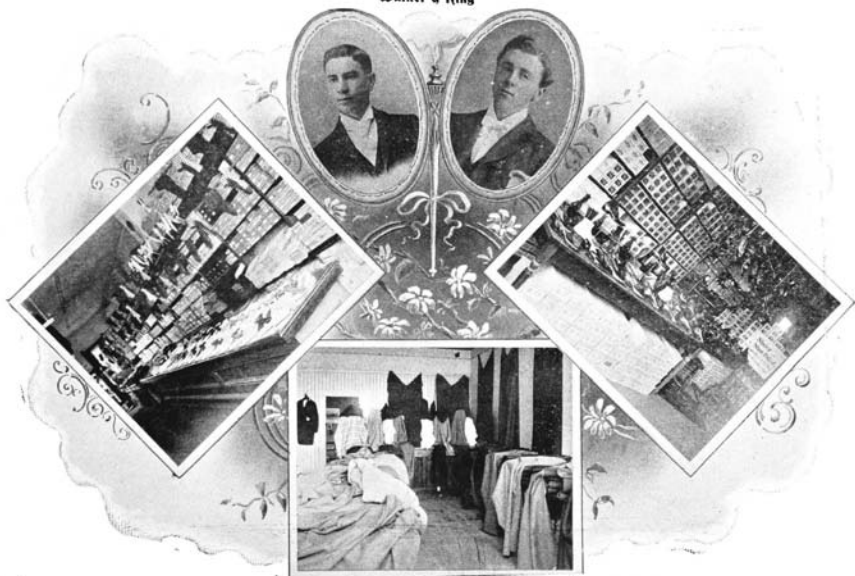


L. A. Rickers,
Groceries and
Mine Supplies.

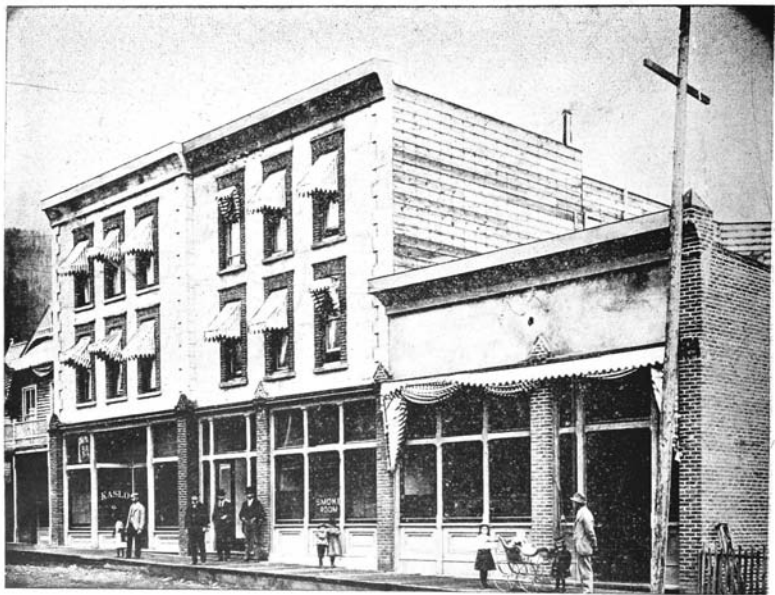


Messrs. A. Johnson, and W. Nelson the proprietors of the Lake View Hotel, are most favorably known in mining circles as genial, whole-souled representatives from the Kaiser's empire. All classes unite in praising their generous and accommodating treatment of the public,

Walker & King



The accompanying cut illustrates Kaslo's leading clothing store, owned by J. Walker and Ernest King. Their Furnishings and Ready Made Clothing Departments are replete with the latest novelties and most serviceable goods. In Boots & Shoes they keep up with all the newest styles in fine footwear and make a specialty of miners goods. Their constantly increasing trade shows the appreciation of the public. The Tailoring Department is second to none and in fit and style compare favorably with the latest metropolitan designs. The stocks carried are full and complete in all lines.



The Kaslo Hotel, Messrs. Cockle & Papworth, proprietors. The leading commercial and tourist resort.
It is too widely known to need any further description.

