

M15849

MAIN STREET



1221

GREENE & SONS

COMPANY,

MONTREAL.

GENTS' FURNISHINGS

HATS AND FURS

STOCK

Now Complete.

PRICES LOW.

TERMS LIBERAL.

Warehouses :

517, 519, 521, 523, 525 ST. PAUL STREET, MONTREAL.

JOHN TAYLOR & CO.

MANUFACTURERS OF

FRANK WORKMAN,
316 MC DERMOTT AVE.

Furs, Silk Hats and Bull-Overs

OF ALL DESCRIPTIONS,

AND IMPORTERS OF

English and American Hats, Scotch and other Caps

TERMS LIBERAL

→*WAREHOUSE: 535 & 537 ST. PAUL STREET, MONTREAL.*←

A full Variety of all description of Goods in our line constantly on hand.

JAMES CORISTINE & CO.



FUR MANUFACTORY AND VAULTS.

EVERY DESCRIPTION OF

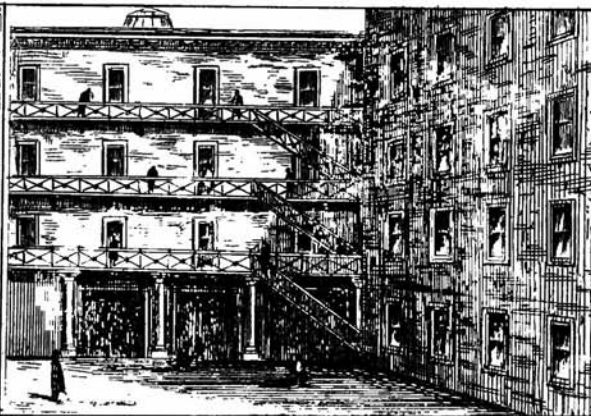
FURS,

— FOR —

Men and Women's Wear,

— ARE MANUFACTURED FOR —

THE WHOLESALE TRADE.



FUR HAT FACTORY.

We are Successfully Producing

FUR HATS.

This Industry has been

INTRODUCED BY OUR FIRM,

— AND IS —

The only Factory of the kind in the Dominion.



WAREHOUSE

For the FALL and WINTER

WE OFFER A FULL ASSORTMENT

LADIES' and MEN'S

OF OUR OWN MANUFACTURE

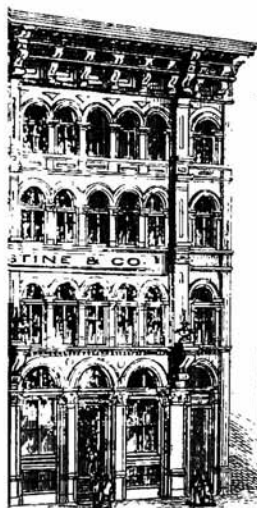
Gloves, Mitts, &c.

For the SPRING

FUR, WOOL AND SILK

Of English, American, and Continental

WAREHOUSE---471, 473, 475 and 477 St. Paul Street, MONTREAL



HOUSE.

WINTER TRADE

ASSORTMENT OF

MEN'S FURS,

MANUFACTURE,

Robes, &c.

WINTER TRADE.

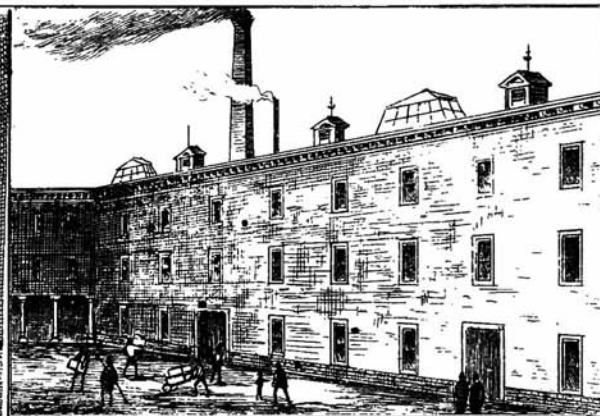
STRAW HATS,

and Our Own make.



FUR DRESSING AND DYEING SHOP.

Until recently nearly all descriptions of Lustered Furs were DRESSED and DYED in Europe. We have successfully developed that important branch, which is now a leading economy in manufacturing, as the Raw Skins are imported free of duty, and turned out in manufactured goods.



WOOL HAT FACTORY.

1878. Paris Exhibition. 1878.

PRIZE MEDAL Awarded for our Manufacture of **WOOL HATS.**

THE WOOL HAT FACTORY has been in operation about 10 years. A large addition in machinery was made last year, and the product is now more than doubled.

ROBERT MITCHELL & CO.,

BRASS FOUNDERS, COPPERSMITHS, STEAM FITTERS, &c.,

MANUFACTURERS OF

Sellers and Friedman Injectors
for Feeding Boilers,
Friedman Ejectors for Raising
and Conveying Liquids.

PLUMBERS' SUPPLIES.

Compression Work,	Copper Baths,
Ground Work,	Copper Boilers,
Water Closets,	Pumps,
Sanitary Ware, &c., &c.	

STEAM GOODS.

Globe Valves,	Peet Valves,
Angle Valves,	"Y" Valves,
Check Valves,	Jenkins Valves,
Lock-up Safety Valves, &c., &c.	

Gasfittings, Chandeliers, Pen-
dants, Brackets, &c., in
great variety.



MONTREAL BRASS WORKS: ST. PETER and CRAIG STS., MONTREAL.

CANADA PAPER CO.

(LIMITED,)

Late ANGUS, LOGAN & CO.,

Manufacturers of News, Book and Coloured Printing Papers,

Envelope Papers and Envelopes, Manilla, Brown, Grey & Straw Wrapping Papers,
Roofing Felt and Match Paper, Strawboard and Paper Bags, Cards,
Card Board and Blank Books.

IMPORTERS OF EVERY DESCRIPTION OF

Writing and Jobbing Papers, Enamelled Papers, Envelopes,
AND GENERAL STATIONERY.

MILLS AT WINDSOR AND SHERBROOKE, P. Q.

MONTREAL:

374, 376, 378 ST. PAUL STREET.

TORONTO, Ont.

11 FRONT STREET.



First Prize Bronze Medal and Diploma for Carriages, awarded at Sydney, N.S.W. 1877. | First Prize Diploma awarded Centennial Commission, Philadelphia, 1876.



BY SPECIAL APPOINTMENT

CARRIAGE-MAKER

FOR

H. R. H. The Princess Louise.

AND

His Excellency The Marquis of Lorne,

B. LEDOUX, Carriage Manufacturer,

FACTORY:

125 and 127 St. Antoine Street,

CARRIAGE WAREHOUSE AND OFFICE:

131 & 133 St. Antoine Street

MONTREAL.

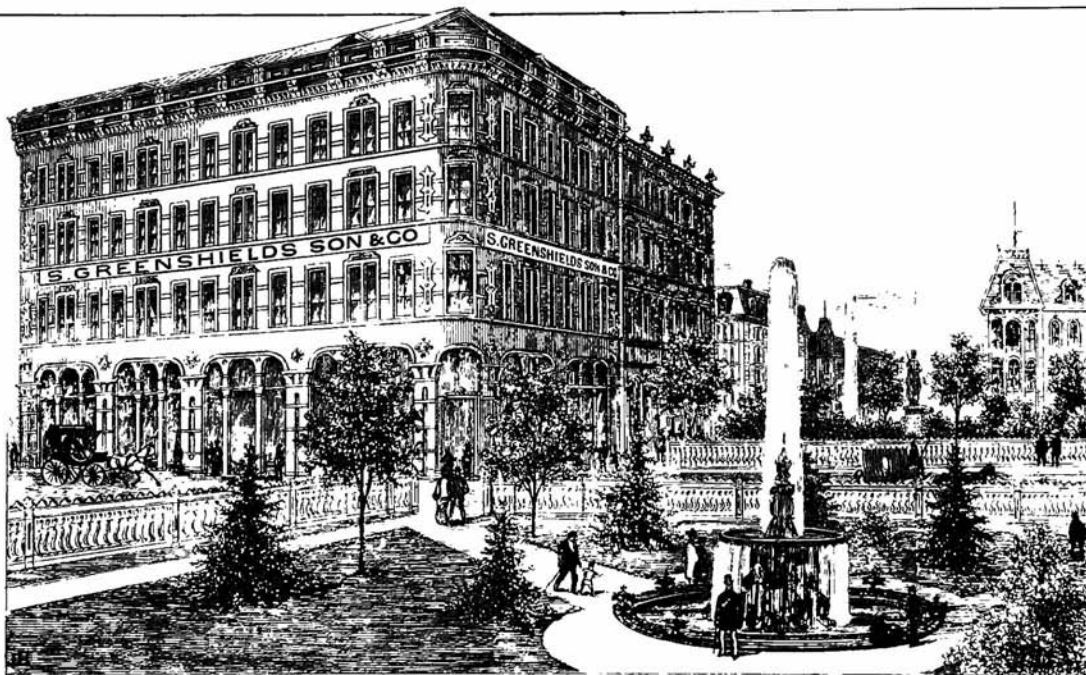
Mr. BRUNO LEDOUX begs to inform the public, his friends, and strangers visiting Montreal, that he always keeps on hand a complete assortment of ELEGANT FAMILY CARRIAGES, suitable for summer and winter. He has carried all honors at Provincial Exhibitions held in the last ten years.



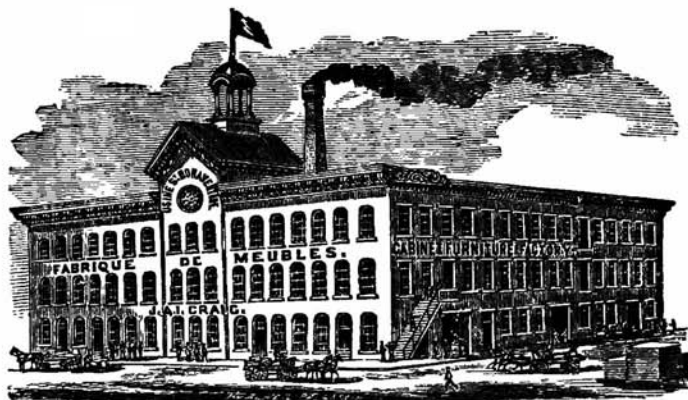
FIRST PRIZE EXHIBITION OF 1868 & 1870,
AND THE DIPLOMA AWARDED AT
EXHIBITION OF 1870.



Also, two Silver Medals and Diploma for
Carriage and Sleighs awarded by Canadian
Commission at Centennial
Philadelphia, 1876.



S. GREENSHIELDS, SON & CO.,
→* DRY GOODS MERCHANTS, *←
VICTORIA SQUARE, MONTREAL.



→*THE TRADE SUPPLIED.*←

J. A. I. CRAIG,

Wholesale Manufacturer

— OF —

CABINET FURNITURE.

OFFICE AND FACTORY:

473 to 483 ST. BONAVENTURE STREET, MONTREAL.

The Largest Manufacturer of Chamber, Library, Dining and
Drawing-Room Furniture in Lower Canada.

Seventy-five different Designs of **BEDROOM FURNITURE** constantly on hand,
and other goods in proportion.

ELECTRIC LIGHT.

The undersigned is prepared to furnish, at moderate prices,

Dynamo Electro Magnetic **MACHINES,**

for producing Light, also all the accessories, and fitting it up for the lighting of large open areas, Lighthouses, Harbors, Ships, Public Rooms, Railway Depots, Churches, Museums, Concert Halls, Theatres, Hotels, Workshops, &c.

J. A. I. CRAIG,
472 BONAVENTURE ST., MONTREAL.

ESTABLISHED 1830.

S. H. & J. MOSS,

IMPORTERS OF

WOOLENS, &c.

5 and 7 RECOLLET ST.

MONTREAL,

—AND—

1, Aldermanbury Avenue, London, E. C., England.

As we have recently opened a house in London, England, and two of our Firm are constantly on the spot looking out for suitable goods at lowest market prices for this market; we are, therefore, in a good position to study the interests of our customers both as to price and styles, in English, Scotch Continental Goods.

THE COOK'S FRIEND BAKING POWDER

HAS BEEN BEFORE THE PUBLIC FOR OVER TWENTY YEARS.

OWING TO ITS STERLING QUALITIES, DEMAND FOR THE



HAS BEEN CONSTANTLY ON THE INCREASE.

It contains NO Alum nor other deleterious—and cheap—substitute for the proper ingredients
of good Baking Powder.

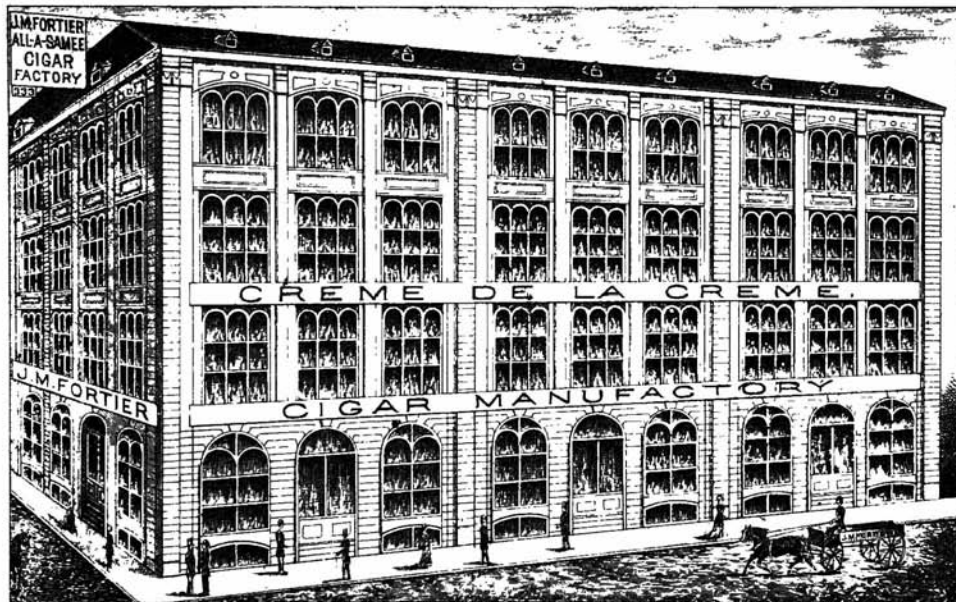
MANUFACTURED AND FOR SALE TO THE TRADE ONLY BY

W. D. McLAREN,

Nos. 55 AND 57 COLLECE STREET,

RETAILED EVERYWHERE.

REMAINDER



333 St. Paul, 6, 8 and 10 St. Dizier Sts. and 2 LeRoy Street.

CREME DE LA CREME

Cigar Manufactory.

SOLE MANUFACTURERS

OF THE FOLLOWING

CELEBRATED BRANDS :



IMPORTER #7

SEED AND HAVANA LEAF TOBACCO.

**333 St. Paul Street,
MONTREAL.**

Lyman's Standard Blue Black



Are Scientifically Prepared; are warranted to be permanent in Colour and free flowing; do not corrode the Pen.

Handsomely put up in English Stone Bottles; quarts, pints and half pints. IMPERIAL MEASURE.

PREPARED ONLY BY
LYMAN, SONS & CO ,
MONTREAL.



To make a cup of delicious coffee instantaneously ANYWHERE, use

Lyman's Concentrated Extract of Coffee

PREPARED BY A
 NEW AND SCIENTIFIC PROCESS
 FROM CHOICE SELECTED COFFEE, FRESHLY
 ROASTED AND GROUND EXPRESSLY
 FOR THIS PURPOSE.

It is Unrivalled in Quality and Flavor, and acknowledged The Best wherever tried.

For sale by Grocers and Druggists in $\frac{1}{2}$ lb. & $\frac{1}{4}$ lb. bottles

TRIAL SIZE, 5 Cents A BOTTLE.

THIBAudeau & BROTHERS & CO.,

IMPORTERS OF

English, French, American

—AND—

GERMAN GOODS,

No. 332 St. PAUL STREET, - - MONTREAL.

QUEBEC:

Thibaudeau Freres & Cie.

WINNIPEG:

Thibaudeau Brothers & Co.

LONDON, ENG.:

Thibaudeau Brothers & Co.

The Liverpool and London and Globe Insurance Company.

ASSETS OVER \$30,000,000.

- FUNDS INVESTED IN CANADA, \$900,000.

HEAD OFFICE, CANADA BRANCH: - Corner of Place d'Armes and St. James Street, MONTREAL.

BOARD OF DIRECTORS:

HONORABLE HENRY STARNES, *Chairman.* | THOMAS CRAMP, Esq., *Deputy Chairman.*

THEODORE HART, ANGUS C. HOOPER and EDMOND J. BARBEAU, Esqs.

Insurances accepted at Current Rates. Special attention given to Farm Risks, Churches and Dwellings.

ROBERT STRANG,
Agent, Winnipeg.

G. F. C. SMITH,
Resident Secretary and Chief Agent.

FAIRBANKS' STANDARD SCALES.

CANADIAN WAREHOUSE:

377 ST. PAUL STREET, MONTREAL.

HORSMAN & COMPANY, - - Winnipeg, Manitoba.

MAJOR & GIBB,

646 CRAIG STREET, - - - MONTREAL.

Importers and Manufacturers of

Wire Cloth and Wire Goods.

BRASS RIDDLES
BRASS WIRE CLOTH, ALL MAKES, FROM 2
TO 150 MESH
CLOTHES LINE GALVANIZED
COUNTER RAILING
COAL SCREENS
CROQUET BORDER
CRIMPED SPARK CLOTH
DISH COVERS
DISH DRAINERS
FANNING MILL CLOTH
FENCING—VARIOUS PATTERNS
FLOWER BASKETS
FLOWER POT STANDS
GALVANIZED NETTING
IRON WIRE CLOTH

IRON WIRE
RAT AND MOUSE TRAPS
SIEVES—IRON TINNED AND BRASS
TOASTING FORKS
TWILLED SPARK CLOTH
FLY TRAPS
BROILERS, ALL SIZES
TEA AND COFFEE STRAINERS
EGG BEATERS
OX MUZZLES
POTATO MASHERS
FLOUR SIFTERS
FLOUR SIEVES
TILE TEAPOT STANDS
MEAT RESTS.
EGG STANDS

TOAST RACKS
BRUSH AND SOAP HOLDERS
SPONGE BASKETS
BROOM HOLDERS
LADIES' WORK BASKETS.
HANDKERCHIEF BOXES
WATCH AND JEWEL STANDS
GLOVE BOXES
BONNET STANDS
WIRE FIGURES
PLATE EASELS
CUP AND SAUCER EASELS
PLAQUE HANGERS
BIRD CAGES
PARROT CAGES
BESS. STEEL CHAIR AND SOFA SPRINGS

And every description of Goods that are made of Wire.

Johnston's Fluid Beef Factory, Montreal

FRANK WORKMAN,
316 MC DERMOTT AVE.

Johnston's Fluid Beef

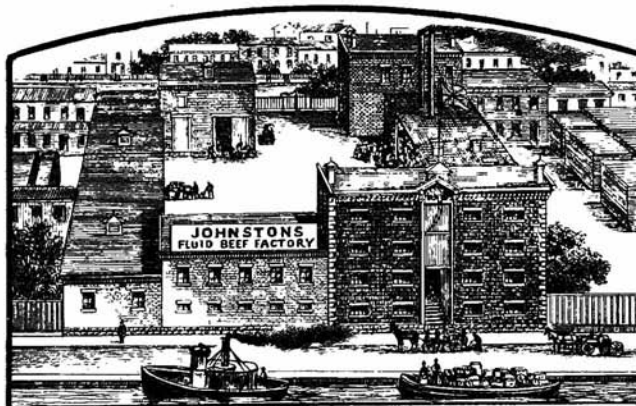
Is substantial Food for
Brain, Nerve, Bone and
Muscle.

It is the highest form of
Nutriment adapted to the
feeblest digestive powers.

Sold by Druggists and Grocers

EVERYWHERE

\$0.30, \$0.60, \$1.00.



Recommended by every Physician who has tested its merits

Johnston's Military Soup

Is a highly nutritious,
palatable, convenient and
economical preparation,
containing, in a concen-
trated form and in the
most approved proportions
all the essential elements
of muscle and energy.

It is the cheapest and
best prepared food in the
market.

Both invaluable for Traveling, Camping and general use.

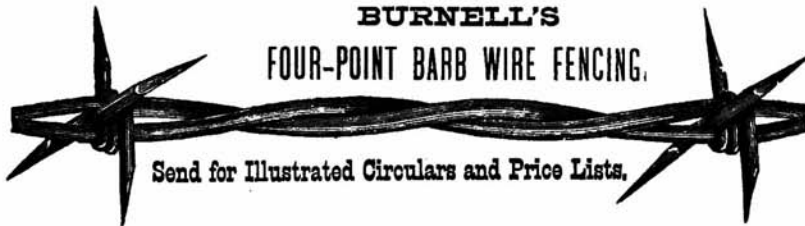


Queen Street.



Montreal

**MAXIMUM
IN
STRENGTH.**



**BURNELL'S
FOUR-POINT BARB WIRE FENCING.**

Send for Illustrated Circulars and Price Lists.

**MAXIMUM
IN
STRENGTH.**

The LAWLOR MANUFACTURING COMPANY

THE OLDEST HOUSE IN THE TRADE.

ESTABLISHED 1861.

Our Improvements are secured by Letters Patent.



NONE GENUINE WITHOUT THE ABOVE

Trade Mark on Arm and Stand of Machine.

Beware of cheap counterfeits varnished and gilded to hide their defects.

MR. J. D. LAWLOR,

MONTREAL, 3rd Oct. 1877

SIR,—Having in this establishment thirty-seven of your Manufacturing No. 2 Sewing Machines, some of which have been in constant operation on various kinds of work for upwards of seven years, I am happy to say that they prove perfectly satisfactory, and are superior to the Wheeler & Wilson, or any other Sewing Machine of either home or foreign manufacture we have ever used for manufacturing purposes.

FRS. SCHOLÉS,

Manager Canadian Rubber Co. of Montreal.

MR. J. D. LAWLOR,

MONTREAL, 2nd October, 1877.

SIR,—Having had your Family Singer Sewing Machine in use for upwards of six years, we beg to inform you that we have always found it most satisfactory, and it is, in our estimation, superior to any other Sewing Machine we have ever had, either for the use of families or manufacturers.

THE SUPERIOR OF VILLA MARIA.

MR. J. D. LAWLOR,

MONTREAL, 12th Sept. 1877.

SIR,—In reply to your Inquiry we have much pleasure in stating that your Family Singer Sewing Machine we have had from you about six years ago, has always given entire satisfaction. We have used the Wheeler & Wilson and other Machines of American manufacture, but give yours the preference for family purpose.

MISS M. T. ALLAN,

"RAVENS CRAIG," MCTAVISH STREET.

Principal Office: 374 NOTRE DAME STREET. Factory: 56 and 58 NAZARETH STREET,
MONTREAL.

O'BRIEN, KIERAN & CO.,

MANUFACTURERS OF

→‡CLOTHING‡←

NUNS' BUILDINGS,

21 & 23 De BRESOLES ST., MONTREAL.

JOHN L. CASSIDY & CO.,

IMPORTERS OF

CHINA, GLASS AND EARTHENWARE,

LAMPS, CHANDELIERS. &c., &c.

NUNS' BUILDING,

339 and 341, St. Paul Street,

MONTREAL.

WILLIAM EVANS,

Seedsman to the Council of Agriculture for the Province of Quebec,

IMPORTER AND GROWER OF

Field, Garden & Flower Seeds.

FRANK WORKMAN,
819 MCDERMOTT AVE.

DEALER IN

AGRICULTURAL IMPLEMENTS OF EVERY DESCRIPTION.

WAREHOUSES: 89, 91 & 93 MCGILL ST.

Corner 106 and 108 Foundling Street, and over St. Ann's Market,

MONTREAL.

NURSERIES AND SEED FARM: BROADLANDS, COTE ST. PAUL.

Fruit and Ornamental Trees, Shrubs, Roses, Green-house and Bedding Plants, Vegetable Plants, Small Fruits, &c.

Trade Price Lists, Descriptive Retail Catalogues and Nursery Catalogues sent free on application. Seeds can be mailed to any part of Canada at the rate of 5c. per lb. postage.

POWER & DAWSON, Die Sinkers & Engravers, Stampers & Piercers.

—MANUFACTURERS OF—

BRASS AND STEEL SEALS, MONOGRAMS,
RUBBER STAMPS, STENCIL PLATES,
BURNING BRANDS, DATING STAMPS,
DOOR PLATES, BAGGAGE CHECKS
AND SOAP DIES, &c., &c.,

684 and 686 Craig Street, Montreal.

ST. PAUL, MINNEAPOLIS & MANITOBA RAILWAY.

THE FARGO SHORT LINE—THROUGH TIME CARD.

LEAVE NORTH.		STATIONS.	ARRIVE SOUTH.	
*7 35 A.M.	7 35 P.M.	ST. PAUL	10 00 A.M.	*6 30 P.M.
8 15 "	8 15 "	MINNEAPOLIS	9 45 "	6 00 "
11 05 "	11 30 "	ST. CLOUD	6 00 "	2 55 "
12 47 "	1 30 "	SAUK CENTRE	3 45 "	12 57 "
2 10 "	2 45 "	ALEXANDRIA	2 35 "	11 50 "
4 20 "	*5 00 "	FERGUS FALLS	12 05 "	9 45 "
6 55 "	8 00 "	MOORHEAD	8 50 "	7 05 "
*7 00 "	*8 10 "	FARGO	*8 45 "	7 00 "
	*1 55 "	GRAND FORKS	*3 00 "	
	7 40 "	GLYNDON	*9 10 "	
	11 55 "	CROOKSTON	5 25 "	
	4 25 "	FISHERS LANDING	1 40 "	
	4 45 "	ST. VINCENT	12 15 "	

C P. R. R.

ARR. *8 20 " ST. BONIFACE. *7 40 " Lv.

LEAVE NORTH.		STATIONS.	ARRIVE SOUTH.	
*8 20 A.M.		ST. PAUL	*7 05 P.M.	
9 00 "		MINNEAPOLIS	6 30 "	
10 23 "		DELANO	4 57 "	
12 22 "		LITCHFIELD	3 00 "	
1 40 "		WILLMAR	1 15 "	
3 30 "		BENSON	12 03 "	
9 40 "		BROWN'S VAL	5 30 "	
5 45 "		HERMAN	9 25 "	
7 45 "		BRECKENRIDGE	*7 20 "	
12 30 P.M.		DURBIN	1 00 "	

*Except Sunday.

† Except Monday.



WE CLAIM FOR THE
NUBIAN BLACKING,

That it is Waterproof.

- " it preserves the Leather.
- " without brushing it gives a brilliant Polish.
- " it never soils.
- " it makes Boots and Shoes last much longer.
- " it is suitable for all kinds of Leather & Rubber Goods
- " it is easily and quickly applied.
- " so little being required, makes it the cheapest of all kinds of Blacking

WHOLESALE AT

FOGARTY & BRO.,
 MONTREAL.

Sole Agents for the Dominion of Canada and Newfoundland.



RETAILED

—AT—

25c. a Bottle,

—BY—

BOOT AND SHOE DEALERS,
 GROCERS

AND DRUGGISTS,

ALL OVER CANADA.

DOMINION METAL WORKS.

ESTABLISHED 1828.

CHARLES GARTH & CO.,
HOT WATER AND STEAM ENGINEERS,

Iron and Brass Founders, Finishers, Machinists, Coppersmiths, Gasfitters, &c.

Manufacturers of all kinds of Brass and Cast Iron Fittings, for Steam and Hot Water.

Plumbers Materials of all descriptions.

All kinds of Brass, Copper and Iron Works for Gas and Water Works, Sugar Refineries, Breweries, Distilleries, Cotton and other Mills, &c.

Petroleum Gas Works, for lighting Manufactories, Mills, Colleges and Public Institutions.

All kinds of Steam Kettles and other Steam Cooking Apparatus.

Steam and Vacuum Gauges, made, repaired and adjusted.

Condensers and all kinds of Metal Work required for Steamships, executed on the **Shortest Notice.**

Public and private buildings, Mills, Manufactories, Conservatories, &c., warmed by Garth's Patent Hot Water Apparatus or by steam.

Iron, Brass and Copper Tubing for Gas, Steam or Water, Gas Fittings, Engineers supplies, &c., kept always in stock.

**Office, Showrooms and Manufactory, Nos. 536 to 542 Craig Street,
Iron Foundry and Machine Shops, corner Maisonneuve and Zagachetiere Streets, Montreal.**

ROBIN & SADLER,

MANUFACTURERS

OF

FIRE

ENGINE HOSE

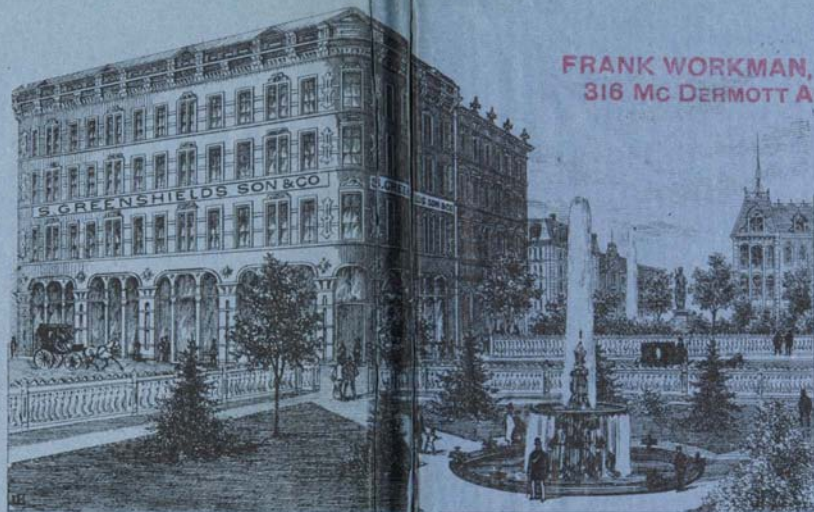
—AND—

LACE LEATHER,



594, 596 and 598 ST. JOSEPH STREET, MONTREAL.





FRANK WORKMAN,
316 MC DERMOTT AVE.

S. GREENSHIELDS, SON & CO.,

* DRY GOODS MERCHANTS, *
VICTORIA SQUARE, MONTREAL.

BR
917.1264
m.11
c.2

A panoramic illustration of Main Street, Winnipeg, East Side, showing various buildings, street scenes, and a list of businesses and residents at the bottom. The illustration is a detailed black and white engraving-style drawing. It depicts a wide street with numerous horse-drawn carriages and pedestrians. The buildings are multi-story, with various architectural styles, including brick and wood. The street is lined with trees and streetlights. The bottom of the image contains a long list of businesses and residents, organized by street or block. The text is small and dense, but it provides a comprehensive list of the commercial and residential life in Winnipeg at the time. The overall scene is a bustling, active street, reflecting the growth and development of the city in the late 19th century.

FRANK WORKMAN
318 MC DERMOTT AVE

THE CAUCHON BUILDINGS.

PHOTO LITH BY THE BURLAND LITH CO. MONTREAL.

Hespeler's Block.



