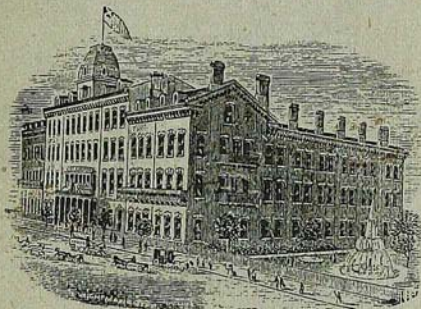


Handwritten: New York, N.Y. 1880
The Queen's Hotel
Patterson & Co's Steam Print

THE QUEEN'S HOTEL

TRAVELLERS' **G**UIDE



FOR THE CITY OF TORONTO,
WITH A LIST OF THE
PRINCIPAL BUSINESS HOUSES
AND SKETCHES OF THE PROMINENT
PLACES OF INTEREST.

TORONTO:
Patterson & Co's Steam Print, 48 King St. East.
1880.

Paper Hangings.

M. STAUNTON & CO.,

6 KING STREET WEST.

TORONTO.

MANUFACTURERS OF



AND

DECORATIONS.

Have always on hand a large and well-assorted stock of

Fine Gold,

Embossed Gold, and

Satin Papers,

IN NEW AND ELEGANT DESIGNS.

DADO PANNELLINGS

IN GREAT VARIETY.

6 KING STREET WEST.



EX 11225

DRY-GOODS.

I

W. M. ARTHURS & CO.,

25 KING STREET EAST.

TORONTO.

Importers of first quality

DRY GOODS,

Silks, Velvets, Irish Poplins,

FANCY DRESS GOODS

Millinery, Laces, Flowers, Feathers, Ladies' Under-clothing, Mantles, Hosiery, Gloves, Shirts, Collars, Scarfs, Braces, Umbrellas,

House Furnishings,

Lace Curtains, Curtain Repps, Damasks, Table and Piano Covers, Linen Damasks, Napkins, Tray Cloths and D'Oyles and a general

Stock of General Dry Goods.

500 Dozen Alexanders & Seamless First Quality Kid Gloves always to select from.

DRY-MAKING ON THE PREMISES.

TORONTO BANKS AND WHERE THEY
ARE SITUATED.

Assistant Receiver General's Office, Toronto St.
Bank of British North America, cor. Yonge and
Wellington Streets.

Bank of Montreal, cor Yonge and Front Sts.

Bank of Toronto, cor. Church and Wellington
Streets.

Canadian Bank of Commerce, 59 Yonge St.

Dominion Bank of Canada, cor. King and Yonge
Streets.

Merchants' Bank of Canada, 13 Wellington St.
West.

Molson's Bank, King St. West.

Ontario Bank, cor. Wellington and Scott Sts.

Quebec Bank, cor. Wellington and Church Sts.

Standard Bank of Canada, cor. Yonge and Wel-
lington Streets.

Imperial Bank, Wellington Street East.

Federal Bank of Canada, Wellington St. West.

Places of Interest and Public Buildings

Parliament House, Front Street West.

Lieut.-Governor's House, cor King & Simcoc Sts.

Custom House, corner of Yonge and Front Sts.

Exhibition Grounds and Crystal Palace.

Provincial Lunatic Asylum, Queen St. West.

Osgoode Hall, Queen Street West.

College Avenue, Queen and Yonge Streets.

Queens Park, Queen Street West.

University Building, Queen's Park.

Horticultural Gardens, cor. Gerrard & Sherbourne

Normal School, Museum, &c., Gould Street.

St. James' Cathedral, (Episcopal) King St. E.

St. Michael's Cathedral, (R. C.) Shuter St.

Metropolitan Church, (Wesleyan) Queen St. E.

St. Andrew's Church, King St. West.

Baptist Church, cor Jarvis and Gerrard Sts.

St. James' Cemetery, Parliament St.

Post Office, Adelaide St.

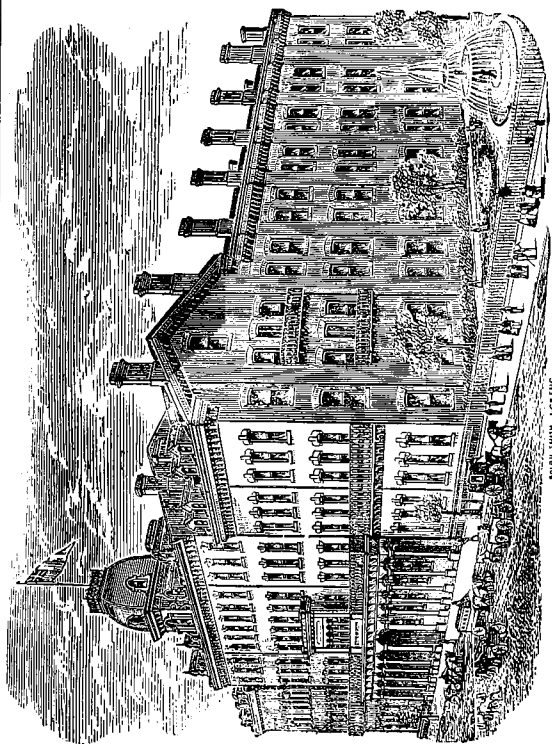
Central Prison, King St. West.

St. Lawrence Hall and Market, King St. East.

City Hall, Front Street East.

Exhibition Rooms, Society of Artists, 14 King w.

Knox College, Spadina Avenue.



W. & A. J. SMITH, LONDON.

THE QUEEN'S HOTEL.

TORONTO, ONT.

MCGAW & WINNET, PROPRIETORS.

THE "Queen's" is one of the largest and most comfortable Hotels in the Dominion of Canada, and being adjacent to the lake, commands a splendid view of Toronto Bay and Lake Ontario. It is well known as one of the coolest houses, in summer in Canada, and is elegantly furnished throughout; rooms "en suite," with bath-rooms, &c., attached, on every floor.

In May of the present year, their Royal Highnesses, Prince Leopold, K.G., &c., &c., and Princess Louise, occupied a suite of apartments at the Queen's.

In 1871, apartments were occupied by His Imperial Highness, the Grand Duke Alexis of Russia.

His Excellency, the Earl of Dufferin, K.P.,

QUEEN'S HOTEL.—*Continued.*

&c., &c., Governor-General of Canada, and the Countess of Dufferin, on the occasion of each visit to Toronto, engaged apartments at the "Queen's."

The beautiful grounds about it being both spacious and airy, with Croquet and Chevalier Lawns, render it one of the most pleasant and desirable hotels for business men, pleasure seekers and the travelling public.

The Queen's is furnished with all the latest modern improvements. Handsome Passenger Elevator, Electric Bells, &c., &c.

From the "Cut" it will be seen that the "Queen's" is but three stories high covering a large area of ground used exclusively for Hotel purposes, and having Lawns on either side with means of exit from the house in addition to those in front and rear, renders it almost impossible for any accident to take place from fire; consequently the "Queen's" is looked upon as the safest Hotel in the Dominion of Canada.

Telegraph communication to all parts.

No runners employed.

NOTMAN & FRASER
Photographers to the Queen

Opposite the Globe Office. 4

KING ST. EAST.

Messrs. Notman & Fraser's earnest desire is to spread and encourage good and sterling art, independent of any passing fashion of the hour, and they confidently state that the pictures now provided by them are such as will afford the highest pleasure to æsthetic natures.

The numerous medals awarded at the various international exhibitions attest to the excellence of their productions:—London, 1862; Paris, 1867; Centennial, Philadelphia, 1876, where a special gold medal was awarded being the only one awarded for photography. Also numerous eulogistic notices from the press.

See "Art Journal," "Photo. News," "Graphic," London, "Illustrated News," "Harper's Weekly," etc., etc.

THE (QUEEN'S)
ROYAL NIAGARA HOTEL.

A branch of the Queen's Hotel, Toronto, and carried on during the summer months by an able manager, is located in the town of Niagara, in a beautiful grove at the mouth of Niagara River, on the shore of Lake Ontario, fourteen miles from Niagara Falls, and twelve miles from St. Catharines, is accessible by railway and steamboat ; only thirty minutes ride by the Erie and Niagara Railway or the New York Central Railway, *via* Lewiston, N.Y., from Niagara Falls, and two hours by steamer from Toronto.

One of the Royal Mail Line of Steamers leaves Niagara daily for Montreal, passing through Lake Ontario, the Thousand Islands, the Rapids and the River St. Lawrence, calling at all points both on Canadian and American shores.

The Town of Niagara was at one time the seat of Government for Upper Canada ; its surroundings are full of varied and historical interests.

The facilities for Black Bass and other Fishing, Bathing and Boating are unsurpassed.

The Drives are refreshing and the scenery beautiful in and about the Town and along the banks of the Lake and River.

JAMES H. ROGERS.

LEADING STYLES !

IN

ENGLISH & AMERICAN

Silk and Bell Hals,

UMBRELLAS, VALISES,

Lacross Sticks and Indian Curiosities in great variety.

**Seal Jackets made to order and on view
all the year round.**

**Fur Trimmings cut to order on the
shortest notice.**

JAMES H. ROGERS,

105 King Street East.

Corner of Church Street.

FINEST GOODS AT BOTTOM PRICES.

CITY OF TORONTO.

TORONTO, the Queen City of the West, is the largest and most populous in Western Canada ; it is situated on the north shore of Lake Ontario, between the Humber and Don Rivers, 30 miles N.N.W. of the mouth of the Niagara River. It was at first called York ; but in 1833, when it was incorporated as the first city of Upper Canada, its name was changed to Toronto, derived either from the Mohawk Do-on-do, " trees in the water," descriptive of the appearance of the Islands, or from Toronto, " the place of meeting " of the tribes. Some say Toronto was the name of a noted Indian Chief.

Of all the cities on the Canada shore of Lake Ontario, Toronto is the largest and most important ; although not picturesque, it is most agreeably situated. The handsome Bay, forming its southern front or boundary, gives it as a lake port great commercial advantages, and collects for shipment to the sea-board more grain than all the other cities and towns in Ontario put together. The view from the western entrance to

BOOKSELLERS.

11

Willing & Williamson,

BOOKSELLERS,

10 & 12 KING STREET EAST,

TORONTO.

I NVITE attention to their extensive stock of

New and Standard Books

In all departments of literature.

Also, to their choice and elegant assortment of

STATIONERY & SUNDRIES !

Catalogues gratis on application.

Books mailed *post free* on receipt of price.

Travellers will find it advantageous to visit our establishment while in the city, or to get our catalogues by mail.

WILLING & WILLIAMSON,

10 & 12 King Street E. (north side.)

the harbour and from the Island is varied and striking. The spires and cupolas of its public buildings afford a most agreeable diversity to the distant outline of the city, and mark it as a place of wealth and enterprise. From the cupola of the St. Lawrence Hall at the south, and from that of the Educational Department and the University at the north, the view is both extensive and animating. The long lines of houses, and the rectangular blocks of buildings, intersected by streets running towards the four cardinal points of the compass, and here and there a handsome church, or an elegant edifice, strike the eye of a stranger with an agreeable surprise. Young in years, it has none of the associations which render Quebec almost classic ; but it is as proud of its beautiful Bay and aquatic sports as Quebec is of its ancient Walls and Citadel.

At present Toronto contains about 13,000 public and private buildings, and has a population of nearly 90,000. The assessed value of property is not far from \$29,000,000. The yearly civic income and expenditure amount to about \$500,000.

Great Western Railway.

TICKETS

To **SAN FRANCISCO** and all Points
on the **PACIFIC COAST**,

Both Overland and by Pacific Mail Steamships from New York.

WINNIPEG AND THE NORTH WEST,

——) By all Routes, (——

London, Detroit, Suspension Bridge,

And all the principal points in the UNITED STATES,
both east and west, with the fullest information of Routes, with Guides, Time
Tables, Maps, &c., FREE.

SOLE AGENCY FOR THE

WHITE STAR LINE,

To Liverpool, Londonderry, Queenstown, Belfast & Glasgow.

T. W. JONES, Agent,

23 York Street, Toronto, near Queen's Hotel.

STREETS,

The streets of Toronto are spacious, well laid out, and regularly built. The two main arteries of the city are King and Yonge Streets, which crossing each other at right angles, divide the city into four large sections. Yonge Street runs north and south, King Street east and west. The Street Railway passes along the entire length of King Street, up Yonge Street to Yorkville, and up Queen Street as far as the Provincial Lunatic Asylum, thus forming a convenient means of transport for parties living at the northern, western, and eastern ex remities of the city.

YONGE STREET.

Starting from the foot of Yonge Street northwards from the Bay the most striking objects we meet are Great Western Station, Custom House, American Hotel, Bank of Montreal, Royal Insurance Company, then Wellington Street, and on either side the City Hall, Bank of Toronto, numerous wholesale houses, Edinburgh Life Insurance Company's Building, Merchants' Bank, Bank of British North America. The

BOOTS AND SHOES.

15

KING & BROWN,

79 KING STREET EAST,

MANUFACTURERS OF

Ladies', Gentlemen's



and Children's

F I N E

BOOTS AND SHOES.

A Large and Well Assorted Stock always on
hand at the

PARLOR BOOT AND SHOE STORE

Ladies' work made in	- - -	Seven widths
Gentlemen's work made in	- - -	Six
Misses'	- - -	Five
Children's	- - -	Four

ALL WORK WARRANTED.

KING & BROWN, 79 King St. East.

lower portion of Yonge Street from King to the Bay is composed mostly of wholesale houses while above King it is almost an unbroken line of retail shops of every description, and it is, perhaps, the most busy street in the city ; the buildings, many of them, being of fine structure. This street is the great leading thoroughfare of the north, runs almost north and south, and divides the city into two grand divisions, extending from the Bay as far north as Holland Landing, a distance of 30 miles.

KING STREET.

King Street, the principal one in Toronto, is 66 feet in width, is well built up with substantial brick and stone buildings, many of them being equal to any on this continent.

It is about forty years since it was completely composed of wooden structures, and was hardly passable to pedestrians ; but now each side is lined with stately stores, where most of the business is done. The improvements on this street are advancing rapidly, and it bids fair to be, eventually, one of the finest streets in Canada.

TORONTO SHIRT FACTORY

116 YONGE STREET,

CORNER OF

ADELAIDE STREET.



JORDAN STREET.

CORNER OF

17 KING STREET,

WHITE DRESS SHIRTS,

COLLARS AND CUFFS.

Superior to anything manufactured
in the Dominion.

IMPORTER OF

GENTS' HOSIERY

In Silk, Cashmere, Merino, Cotton and All-wool.

TIES AND SCARFS,

Silk Umbrellas, Linen, Cambric and
Silk Handkerchiefs,

GENT'S FURNISHING GOODS

in great variety, and at Cash Prices, at

GALE'S,

116 Yonge St., corner of Adelaide St., and 17 King
St., corner of Jordan St.

This Street is built up for about three miles but extends still further; it forms the main artery for business from the east.

THE COLLEGE AVENUE.

This drive and promenade, leading from Queen Street to the University grounds, is nearly one mile in length, 120 feet in width, and contains about ten acres of land. It is handsomely planted with trees on either side, through the centre of which there is a carriage drive, flanked by a grass border of considerable width. The Avenue is one of the finest in the Dominion, or perhaps on the continent, and was laid out about the year 1829 or 1830, by the University of King's College, now the University of Toronto, and planted by the late Mr. John Wedd. In 1859, this, with the Yonge Street Avenue, which is much narrower, and crosses it at right angles at its northerly termination, together with 50 acres of the University Park, were granted to the Corporation of the City of Toronto, on a lease for a period of 999 years, for the purpose of a Public Park, to be kept in order by the city.



AWARDED

ROSE SMITH & CO
ENGRAVERS ON WOOD,
LITHOGRAPHERS BY STEAM POWER
COPPER PLATE ENGRAVERS
DRAUGHTSMEN.
 DIE SINKERS, EMBOSERS
 & HERALDIC ENGRAVERS,
 36 WELLINGTON STREET E
TORONTO.

Building lots for villas of a certain description have also been laid out for leasing around this Park, and many elegant residences have already been erected.

UNIVERSITY BUILDINGS.

This magnificent pile of buildings was erected during the years 1856-57, to provide accommodation not only for the University of Toronto (which simply confers degrees), but also for University College with its various lecture rooms, residences, and students' quarters. The massive structure was designed by Messrs. Cumberland and Storm, and built under their directions. The chief facades of the building are to the south and east—the former of great and massive elevation, for distant effect from the lake and city.

The general outline of the building approaches the form of a square, having an internal quadrangle of about 200 square feet, the north side of which is left open to the park. The main frontage on the south is about 300 feet long, with a massive Norman tower in its centre 120

ROBERT BEATY & CO.,
BANKERS,
BROKERS, &C.,

61 King St. East, Opp. Toronto St.,
T O R O N T O .

Drafts on New York & United States Currency,

Gold, Silver, Uncurrent Money, Mortgages,
Stocks, Bonds, &c., bought and
Sold at best Rates.

INTEREST PAID ON DEPOSITS.

feet in height and comprising two stories, that on the ground being devoted to lecture rooms, and the upper story to the library and museum ; these may be called the public portion of the building. The east side of the building is 260 feet in length and entered by a subsidiary tower. The west end of the quadrangle is about 200 feet in length, and used as residences for students. The whole cost was nearly \$500,000.

TRINITY COLLEGE

Is a very handsome building, situated on Queen Street West, standing in spacious grounds facing the entrance to the Bay.

The college was erected in 1851, at a cost of £8,000, after plans prepared by Mr. Kivas Tully. The building is of white-brick with stone dressings, and is designed in the third period of pointed English architecture. It has a frontage of 250 feet, facing south, with wings projecting east and west 53 feet each. The porch of the principal entrance is cut stone, over which is a bay window and ornamental gable to correspond. There are also handsome bay windows in each

ONTARIO TRUNK FACTORY.

H. E. CLARKE & CO.,

MANUFACTURERS OF

TRUNKS,

Travelling Bags,

VALISES, &c.

Wholesale.—594 to 600 King Street West.

Retail:—105 King St. West.

TORONTO.

wing, with gable and windows similar to those over the entrance. The building is designed to accommodate eighty students, with class-rooms, chapel, library and museum ; also private residences for the Provost and two senior professors. It is a great ornament to the west end of the city, and a noble ornament to the unwearied zeal of Dr. Strachan, the first Protestant Bishop of Toronto.

THE NORMAL AND MODEL SCHOOLS AND EDUCATIONAL OFFICES.

One of the most attractive spots in Toronto is the buildings and grounds of this Department, which includes the Education Office and Depositories, and Educational Museum, the Normal School, with Girls' and Boys' Model School. The buildings are situated upon the centre of an open square, of about seven acres and a half of ground, bounded on the north by Gerrard Street, on the east by Church Street, on the south by Gould Street, and on the west by Victoria Street. The situation is a very beautiful one, being con-

E. HARRIS & Co.,

IMPORTERS OF

ARTISTS' MATERIALS,

WINDOW GLASS,

Paints, Oils, Colors, Varnishes,

BRUSHES, &c.,

44 King St. East,

TORONTO, ONT.

siderably elevated above the business parts of the city; and commanding a fine view of the Bay, Peninsula and Lake. The adjoining grounds are handsomely laid out and are very attractive in summer.

The Educational Museum includes specimens of Canadian and natural history, and the best varieties of maps, charts, diagrams, philosophical apparatus, and school furniture. It also contains an extensive and beautiful collection of copies of celebrated Italian, Dutch, and Flemish oil paintings and engravings, and casts in plaster of Paris of some of the most noted groups of statuary (ancient and modern), together with a collection of English, Canadian, and classical busts, &c. Free admission to this museum may be obtained daily from nine to five o'clock.

OSGOODE HALL, QUEEN STREET.

This Hall, which is named after the Hon. William Osgoode, the first Chief Justice of Upper Canada, is the seat of the Law Society of Upper Canada, and contains court-rooms and offices for the Superior Courts of the Province.

AIKENHEAD & CROMBIE,

CORNER OF

KING & YONGE STREETS, TORONTO,

IMPORTERS OF

Table & Pocket Cutlery,

FISHING & SHOOTING TACKLE.

GUN FURNITURE

AGENTS FOR

IMPROVED LAWN MOWERS,

Gilbert's Leather Belting.

BOSTON BELTING CO.'S RUBBER HOSE.

PACKING, &c.

AND EVERY DESCRIPTION OF

HARDWARE.

ESTABLISHED 1830.

The cost of the buildings has amounted to about \$250,000. The grounds comprise about six acres of land.

A Law School has been established under the direction and tuition of three readers, designated respectfully, the Reader on Common Law, the Reader on Equity, and the Reader on Real Property.

Four scholarships have been established, one for students under two years' standing of £40 per annum; one for students under one years' standing of £30 per annum; and for students under three years' standing of £50 per annum; and one for students under four years' standing of £60 per annum.

UPPER CANADA COLLEGE

Stands on a site of nine acres, opposite the Government House, fronting on King Street, and consists of a row of neat brick buildings. This institution was founded A.D. 1829.

The centre building is the College proper, containing large and well ventilated class-rooms, a library, a laboratory, and a public hall, the resi-

R. HAY & CO.,

(LATE JACQUES & HAY.)

19 & 21 KING STREET WEST,

TORONTO.

abinet akers

—AND—

UPHOLSTERS.

FACTORY, - - ESPLANADE.

dences of the principal and of the various masters being on either side. The College boarding-house, which has lately had a very large addition added to it, is spacious and fitted with every appliance, does not appear in the view, as it recedes from the line of the other buildings. The same may be said of the gymnasium, &c. The lawn is handsomely laid out, and its cricket-ground and play-yards are extensive.

His Excellency, the Governor-General is a visitor, and annually offers the highest prize to the head boy.

Eight exhibitions, varying in value from \$40 to \$120 per annum, are open to competition of the whole Province. The examination for these are entirely conducted by gentlemen unconnected with the Institution. It is modelled after the celebrated English Grammar Schools, and aims to impart a sound, classical, and commercial education. The College is munificently endowed. A large portion of our leading men received their education, either wholly or in part, at this College; and the distinguished success of its pupils in our universities is a

CHINA HALL.

31

CHINA HALL,

(REGISTERED.)

49 KING STREET EAST,
TORONTO.

GLOVER HARRISON,

IMPORTER OF

China, Breakfast & Tea Sets

DINNER AND DESSERT SETS.

TOILET SETS GLASSWARE.

Parian Statuary, Bohemian Vases, Plated
Goods, Table Cutlery.

FANCY GOODS,

TEA TRAYS. &c.

further proof that it is conducted in an efficient manner.

THE TORONTO MECHANICS' INSTITUTE.

Stands on the corner of Church and Adelaide Streets, and is a large, commodious and imposing structure, 104 by 80 feet, designed in the Italian style by Messrs. Cumberland & Storm, architects. The erection of this fine building was the result of a most praiseworthy liberality on the part of the public and of the members of the Institute. The cost of the building and ground was about \$50,000. For capacity it is not equalled by any building of the kind in the Dominion of Canada.

The building contains a large and commodious Music Hall, 75 by 53 feet, and 35 feet high of ceiling (with ante-rooms), the entrance to which is on Adelaide Street. It also contains a Lecture Theatre, capable of holding 800 persons, a large Reading-room, Library, Committee, and Apparatus Rooms, with other accommodation. The Institute was established in 1830, and

WALTON & SACKMAN,

MERCHANT **T**AILORS

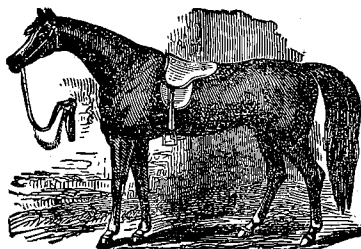
. No. 27 KING STREET WEST,

TORONTO.

incorporated in 1847. A life membership is \$20; annual membership, \$2.50; ladies and youths, \$2.00. The Institution is in a prosperous condition and doing a useful education work.

TORONTO POST-OFFICE

Is situated on Adelaide Street, facing Toronto Street, and was opened to the public on Monday, 20th April, 1874. The style of architecture is Italian. It is 75 feet in front by 60 feet in depth, and 56 feet high to the eaves, but a dome carries it 35 feet higher. The building is of richly wrought Ohio stone, three stories high, with a basement, and a lofty attic in a Mansard roof. The front elevation is composed of a central break, which is relieved with complex columns and pilasters, with polished caps and marbled bases, and moulded cornices at heights corresponding with each floor. On each side of the central break is a recess bay, and beyond, at each outer angle, a tower having instriated pilasters and a continuation of the cornices as on the pilasters of the central break. In the rear



R. BOND'S
LIVERY,
Boarding & Sale Stables,
21 to 25 Sheppard Street.

COUPE & HACK STAND, 80 KING ST. WEST.

Good, reliable Riding and Driving Horses always on hand at reasonable prices and at the shortest notice, day or night. Telephone communication with the Hotel.

of the main building is another, one story high, with basement, 108 feet high.

ST. JAMES CATHEDRAL.

This fine structure stands upon the corner of Church and King Streets, and is the principal Episcopal Church in Toronto ; it is the fourth parish Church which has occupied the same site. The corner stone of the present building was laid on the 20th November, 1850. The extreme length is 200 feet, and 105 feet wide.

During the year 1873, the massive tower was completed, making it 150 feet 3 inches in height. Two handsome side porches and the pinnacles on the west were also completed during the same year.

The spire is 139 feet 9 inches high, and the wrought iron vane 16 feet, making the total height from the ground 306 feet, being several feet higher than Trinity Church, New York, and the highest in America.

The total cost has amounted to about \$166,000, including the peal of bells.

In 1875 the celebrated Chiming and Illumi-

C. SHEPPARD,
Chemist and Druggist,

**67 KING STREET WEST,
TORONTO.**

**English and French Perfumery and
Toilet Soaps.**

**GOSNEL'S LONDON HAIR BRUSHES.
KENT'S LONDON HAIR BRUSHES.
PARIS HAIR BRUSHES.**

**Cloth, Tooth, Nail and Shaving Brushes in
Great Variety.**

**EVERY PATENT MEDICINE OF THE DAY
CONSTANTLY IN STOCK,**

AT 67 KING STREET WEST.

A few doors west of Bay Street.

nated Clock, which took first prize at the International Exhibition at Vienna, was purchased from J. W. Benson, of London, England, by the citizens of Toronto, and presented to the Dean and Churchwardens of St. James' on Christmas Eve, 1876. The movement of the clock, next to that of Westminster, is the largest in the world, and in point of quality of material and finish of workmanship, is unequalled by any. The clock plays a chime on the smaller bells every quarter of an hour, and strikes to the hour of the day on the largest bell.

In 1876 the site was enclosed with a handsome new fence set on stone.

ST. MICHAEL'S CATHEDRAL,

Which stands on the corner of Church, Shuter and Bond Streets, with an entrance on Bond Street, is in the early decorated style of English Gothic architecture, built of white brick and cut stone dressings, being 200 feet in length by 90 feet in width, and with the transepts making a total width of 115 feet exterior dimensions. The windows are large and filled with tracery of great

CHARLES POTTER,
OPTICIAN

31 King Street East, Toronto.

Genuine Pebble Spectacles

—AND—

EYE GLASSES

TO SUIT ALL SIGHTS.

Optical Instruments of all Kinds.

variety—the eastern window, of seven lights, being 36 feet high and 18 feet wide. The transepts have large rose windows, with canopied niches in the gables. The building is wholly under one roof, forming in the interior a nave 170 feet long, 40 feet wide, and 56 feet in height, with pier and arches, triforium and rich ceiling. The side aisles are 180 feet long by 20 feet wide and 48 feet high, with a gallery at the west end. The building was commenced in the year 1845, and finished in 1847. The tower and spire is 250 feet in height.

KNOX CHURCH.

It is situated on Queen Street, west of Yonge Street. The tower and spire of this church are very much admired for their graceful proportions. The building is of white brick, and is designed in the early decorated English Gothic style, with handsome traceried windows at the sides, and a stained glass rose one at the end. The pulpit canopy and screen are highly decorated; the exterior length of the church is 105 by 70 feet wide. It will accommodate 1,300 persons. The

PLUMBING, GAS AND STEAM FITTING.

D. S. KEITH & CO.,

109 KING ST. WEST,

Importers and Wholesale Dealers in

PLUMBERS' GOODS,

Steam and Hot Water Heating, Conservatory
and Green House Heating a Specialty.

PORTABLE PETRÔLEUM GAS WROKS.

BRASS FOUNDRY & FINISHING.

Manufacturers and Dealers in Gas Fixtures.

Engineers' and Plumbers' Brass Goods.

D. S. KEITH.

J. B. FITZSIMONS.

total cost, including bell, was \$24,000. The Rev. H. M. Parsons is the present minister.

WESLEYAN METROPOLITAN CHURCH.

This fine structure, the principal Wesleyan Church in Toronto, is situated in the centre of Magil Square, between Bond and Church Streets, the square having a frontage of 248 by 552 feet. The architecture is of the early French style, and is an ornament to the city, as well as a credit to the Wesleyans.

The material used is white brick, relieved with cut stone dressings. The dimensions of the main building is 72 by 128 feet, the chapel in the rear being 63 by 63 feet, over which are large and commodious class and committee rooms. In front of the church is a massive tower, 29 feet square, and 180 feet in height to top of pinnacles; on either side, at the junction of the main building with the chapel, are two smaller towers, 16 feet square by 122 feet high. The roof is covered with slate of variegated bands.

Toronto and Niagara Navigation Co's.

THE MAGNIFICENT STEAMERS

City of Toronto & Chicora.

In direct connection with the New York Central & Canada Southern Railways.

SUMMER ARRANGEMENT.

Three Trips Daily.

THREE STEAMERS

Will leave Yonge Street Wharf, Toronto, daily at 7 a. m., 1.45 p. m., and 3 p. m., arriving at Niagara at 9.30 a. m., 4.15 p. m., and 5.30 p. m., and Lewiston at 10 a. m., and 4.45 p. m., connecting directly for the Falls, Buffalo, Rochester, Albany, New York, Boston, St. Thomas, Detroit, Toledo, St. Louis, &c., &c.

Single and Family Season Tickets for sale.

Tickets and all information at 8 Front St. East, and 35 Yonge Street.

D. MILLOY, Agent.

The principal entrance front on Queen Street, by two open porches on either side of the main tower ; there are also entrances on either side. The gallery is reached by two commodious staircases, and can be emptied in seven minutes. The pulpit is situated at the north end, and immediately to the rear of the orchestra, which contains one of the finest organs in the Dominion.

The church is ventilated on the most improved principle by three large shafts, carried into the four turrets, and large flues in four chimneys ; and will seat comfortably 1,800, but will contain 2,500 persons.

The ground and building cost \$110,000 ; Henry Langley, architect ; Joseph Gearing, builder.

HORTICULTURAL GARDENS.

The beautiful grounds occupied by the gardens extend over a space of ten acres, all of which are highly cultivated, and are the property of the Toronto Horticultural Society. They were first opened to the public on the occasion of the

The favourite fast sailing upper cabin side-wheel steamer

"PICTON."



CAPT. JAS. COLLIER,

(In connection with the Welland Railway and the Northern Transit Line of Steamers),

LEAVES MOWAT'S WHARF (FOOT OF CHURCH ST.)

DAILY AT 2.45 P. M.,

Conveying passengers and freight to

*Port Dalhousie, St. Catharines, all Stations on
the Welland R. W. Line, Dunville, Niagara
Falls, Buffalo, Toledo, Cleveland,
Detroit, Milwaukee, Chicago
and Duluth.*

This fine and commodious steamer has proved herself to be the most reliable of the swift steamers of the lake route, besides being the most comfortable. No annoying delays. Good and convenient connections for both passengers and baggage, with trains and boats for all the above-named points.

Our passengers pass through the stupendous works now in progress on the Welland Canal, and arrive at St. Catharines (famous for its fine Sanitarian Hotels and Baths) at 6.10 p.m. ; Port Colborne, 7.30 ; Niagara Falls, 8.00 ; and Buffalo, 8.40 p.m.

For information regarding passage or freight apply at office on Mowat's Wharf, (foot of Yonge Street) or on board Steamer "Picton."

visit of His Royal Highness, the Prince of Wales, in 1860.


During the past year the old pavilion was removed, and, on the Queen's Birthday the new structure, erected in its stead, was opened to the public. The present pavilion is built in the form of a parallelogram on stone foundations, and is constructed of wood and glass, with iron roof trusses. It is 75 feet by 120 feet, and has a fine gallery connected with an outer promenade and the verandah by means of glass doors. The height of the ceiling at the walls is 43 feet, and in the centre 55 feet. The stage platform is 21 feet by 46 feet. The hall has been tested and is pronounced by the *cognoscenti* the most perfect in acoustic properties of any building in the city. As a summer concert hall it is a much needed addition to popular requirements, and is sure to be an entire success. A handsome new iron fountain, 25 feet high, has also been added to the attractions of this place of public resort. The cost of the pavilion was \$20,000, and of the fountain \$2,000.

The gardens are now open during the sum-

CANADIAN TOURIST ROUTES.

The great fresh water Lakes of this continent are with Niagara Falls, the most unique and characteristic subjects of interest to travellers from other countries, or for summer excursions for residents in our midst.

THERE ARE NO LAKES LIKE THEM IN THE WORLD.

 Lines of steamers running upon EVERY ONE of the GREAT LAKES are represented in this office.

LAKE SUPERIOR.—The Great North Shore Route, and the only Line passing through the sheltered waters of the Great North Manitoulin Channel. The finest Excursion Route to Lake Superior, Through Travellers to Winnipeg, St. Paul, or any points in the Great North West will find this most pleasurable line of travel, combining the scenery of the Lakes with the Western Railways from Duluth.

LAKE HURON.—Agreeable short excursions through the Georgian Bay and the 10,000 Islands of the Parry Sound Archipelago, and the inside Route to Sault Ste Marie.

LAKE MICHIGAN.—Passing Cheboygan, Mackinac Island and Straits, All places in the Western and South Western States and the Railways from Chicago and Milwaukee are reached by this Route at the most reasonable rates.

LAKES OF MUSKOKA.—PAR EXCELLENCE the most beautiful Lake District in Canada. Fishing in abundance. A region of little Lakes, Rivers and Trout Streams.

LAKE ONTARIO.—Routes through the Thousand Islands and via Ogdensburgh and the beauties of Lake Champlain and the White Mountains to Portland and Boston.

NIAGARA RIVER.—Two Palace Steamers every day for Niagara Falls and every place on the New York Central and Erie Railways. A pleasant trip to the Falls and back can be made in one day.

Information cheerfully given. Enquire for Excursion Pamphlets and Rates.

BARLOW CUMBERLAND.

35 Yonge St., Toronto.

Also Agent of "Inman" and "State" Lines for Europe.

mer months to all who may desire to visit them, from six in the morning until eight o'clock at night—after which hour the Directors have the right, under their agreement with the city, to charge an admission fee to those attending weekly promenade concerts or other performances given for the benefit of the Society.

PROVINCIAL LUNATIC ASYLUM.

This large edifice, the largest in Toronto, is situated in the western portion of the city, on Queen Street, two miles and a half from the Central Market. It is located on a level plain, on a part of the old Garrison Common, known as the Ordnance Land. Its front measures (veranda included) 644 feet. The building is four stories high. The basement contains the apparatus of the establishment, such as kitchens, heating furnaces, bakery, store rooms, tailor shop, &c. The floors above the basement are appropriated to the patients and their medical attendants. Two very large wings have been added to this institution, and it now ranks third, in point of size and population, on the con-

WINDSOR HOTEL.

MONTREAL.

The Windsor is complete with all modern conveniences, and for

Comfort and Elegance

Is second to no Hotel on the
American Continent.

Situated on Dominion Square, ten minutes walk from the Post Office, and centre of business, and the nearest Hotel in Montreal to the Railway Station.

The Windsor offers tourists and travellers comforts and luxuries not obtainable in any other Hotel in the city, and at rates as low as those of any first-class House.

R. H. SOUTHGATE,

MANAGER.

continent of America. The grounds adjoining the Asylum are highly cultivated, the ornamental part is very neatly kept, and adds very much to the enjoyment of the patients. At present there are in the asylum proper, and the two adjacent hospitals, over 500 patients.

The institution is under the direction of Daniel Clarke, Esq., M.D., the Medical Superintendent, assisted by a competent staff.

EXHIBITION GROUNDS AND CRYSTAL PALACE.

The old Crystal Palace, which has served for so many years, as the local site of the Provincial Exhibitions, proving inadequate in accommodation to serve the increasing number of exhibitors and visitors, was removed. The destruction, which means progress, and the change which signifies advance, is always to be welcomed, so the demolition of the old Crystal Palace will not be regretted, when it is seen in its place, a structure in every way, both in regard to size and accommodation, its superior. The new Palace is built with solid brick foundations,

The Washington of Canada.

THE RUSSEL HOUSE

SPARK AND ELGIN STS.,

(Within three minutes' walk of Parliament Buildings)

OTTAWA, C. W.

The undersigned, proprietor of the above named Hotel, begs leave to acquaint his numerous friends and the travelling public that he has repainted and newly furnished throughout this commodious establishment, in the management of which, by strict personal attention to his business and guests, he hopes to deserve encouragement and support.

American money taken at par.

JAMES A. GOUIN.

Lately and for many years connected with the Russel's Hotel, Palace St., Quebec.

with sides and roof of glass, and presents a light appearance to the eye, and affords admirable accommodation for the advantageous exhibition of goods. The building is in the form of a cross, with three entrances, one in the south, east and west, respectively. The main hall is very spacious and light, and the galleries running round the building, not only give additional exhibiting space, but afford an admirable promenade. The prevailing color of the walls is a soft drab with light green trimmings for pillars and other supports, and the combination is at once harmonious, and refreshing to the eye, and effective for the exhibition of goods. The New Crystal Palace and grounds are situated on the Garrison reserve, at the west end of the City, overlooking Lake Ontario, and can be reached cheaply and speedily, by steamer along the lake, and railway, and the stranger in the city ought not to leave without seeing them.

ST. LAWRENCE HALL—KING STREET.

This is a very substantial and elegant building in the English style of architecture; though its beauties are greatly concealed from view, in consequence of its abutting abruptly on the

JOHN KAY

Is now exhibiting the largest
stock of first-class

Carpets, Oil Cloths

AND LINOLEUMS,

To be found in the Dominion. As he purchases direct from the manufacturers, orders more largely than any of his competitors, and has the exclusive control of a greater variety of patterns than will be found in any other establishment in Canada, he is in a position to offer buyers advantages not to be obtained from any other house in the trade. Notwithstanding the recent GREAT ADVANCE IN THE PRICE OF CARPETS, he will continue to sell for a short period at his present LOW PRICES.

Intending Purchasers should note

Prices Must Shortly Advance.

COR. KING & YONGE STS.

street. The principle front is on King Street. There are two large shops on each side of the centre of the building, with carved and moulded piers on the ground floor, sustaining rich entablatures with balconies to the first floor windows. The entire frontage is 150 feet.

In the centre of the roof is a cupola or dome supported by a rustic base with windows, the dome being 17 feet diameter; in the cupola is the bell, 2,130 pounds, also the city clock, the faces of which are to the four cardinal points. The whole is terminated by a small cupola and flag-staff, the height to the top of the cupola being 120 feet.

In the centre of the Hall is an archway, with highly ornamented bronzed iron gates, leading to an arcade of shops, the rear of which is occupied as the butcher's market, having shops on both sides; each shop having connection with a square leading from East and West Market Streets respectively, which are occupied by farmers for the sale of produce. The Hall is 100 feet long and 36 feet 6 inches wide, with a gallery at one end, under which is a reception room; the ceiling and walls of the hall being richly ornamented.

GREAT WESTERN STATION

Covers an area of 311 feet 6 inches by 150



J. W. ELLIOT,
Dentist,

NOS. 43 & 45 KING ST. WEST,

Over E. Hooper & Co's Drug Store,

TORONTO.

feet. In the central space between the platforms, which is 64 feet wide, four tracks have been laid, with switches for transposing from one to another. The passenger platform, which is on the north side of the main entrance from Yonge Street, is 195 feet long by 36 feet wide, over which is a handsome wooden ceiling neatly painted.

The size of the main building is as follows : Height to the eaves 34 feet ; the height to the centre of the building is 54 feet, and from the eaves to the centre of the circular roof 21 feet. This circular roof, which is covered with galvanized iron of English manufacture, presents a very striking appearance, and answers a very useful purpose, that of lighting the station, one continuous window being placed each side of the roof. Handsomely constructed windows have also been inserted on the south end or main entrance of the shed.

The excellent lighting of the station is one principle of its construction. The visitor, although feeling sensible of being under cover, can scarcely distinguish between the amount of light inside and outside the building. The credit of this very necessary part of the design is due to the architect, Mr. Storm, who determined, it seems, to employ that cheapest of all lights, daylight, in the greatest abundance. He

Thos. McDonald & Co.,

MANUFACTURERS OF

Stamped, Plain, & Japanned

TINWARE,

RAILROAD LAMPS,

PAINT TINS,

Oil Cans, Grocers' Canisters,

SPICE BOXES.

BLACKING BOXES, &C.

151 TO 159 QUEEN ST. EAST,

TORONTO, ONT.

may justly feel proud of the entire structure, which has cost altogether a little over \$20,000.

LIEUT. GOVERNOR'S RESIDENCE

Is situated on the corner of King and Simcoe Streets, and is designed in the modern French style of architecture, which has been adopted largely in American cities, and is gaining favor rapidly in England. Red brick is the material used in the walls, relieved with Ohio cut stone dressings and galvanized iron strings and cornices, painted and sanded to imitate stone. The main cornices are heavily bracketed with moulded cornice of galvanized iron, the angles with moulded brackets of the same material. The material is found to be much more suitable to our climate than stone, and at the same time is exceedingly economical.

The main building is three stories in height above the basement ; the upper story is partially in the roof, which is constructed on the Mansard principle, the sloping sides are very steep, covered with Melbourne slate and relieved by handsome segmental domes, lighting the third story apartments. The ridge is finished with moulded sides, and the deck is laid with the same material.

Toward Simcoe street the frontage is about 80 feet, and in the centre of it rises a tower 70

COOLEY'S OWN CORSET.

ELEGANT, EASY, DURABLE

—AND—

DELIGHTFUL!

The BEST and most COMFORTABLE Corset made. It gives a PLUMPNESS to the figure which no other Corset can approach.

Bazar Patterns.

The best Patterns for Ladies doing their own Dressmaking. All who once try them use them in preference to all others.

IT IS A KNOWN FACT

That they require less change to fit the figure than any other Pattern offered for sale.

WHEELER & WILSON MFG. CO.,

85 King St. West, Toronto.

feet high, finished with a handsome wrought-iron railing. The roof of the tower is of the same description as that of the main building, but starts from a balustrade finished at corners with paneled pedestals and carved vases.

The frontage of the main building toward King Street is about 88 feet, and the kitchen wing extends 100 more, making a total of 188 feet.

This wing is two stories in height treated in a plainer but somewhat similar manner.

Covering the main entrance, which is under the tower facing Simcoe Street, is a large handsome carriage porch, supported on clusters of Corinthian columns resting on cut stone pedestals. From the capitals of columns spring arches supporting entablature with enriched balustrade, finishing at angels with panelled pedestals and carved vases. The verandah on the south front is treated in a peculiar manner. The main doorway is deeply recessed with massive cut stone arch and jambs, and broad cut-stone steps, and leads into the vestibule, 12 feet square, which is separated by an elaborate screen, filled in with stained and embossed glass, from an inner vestibule or loggia of the same dimensions. This again is separated from the main hall by an enriched arch, springing from fluted Corinthian columns, with richly

carved caps. The inside of the building is finished in the most elaborate style, with every modern convenience. The grounds have been much altered and improved, and approaches of Nicholson pavement put to the entrances. Total cost of the building \$102,000.

TELEGRAPHY.

MONTREAL TELEGRAPH COMPANY.—Main office, cor. Scott and Wellington streets ; Branch offices, at corner Toronto and Adelaide streets. 84 Front street east, corner King and Sumach streets, 503 Queen street West, Thompson, Smith & Co's. Wharf, Grand Trunk Station, Emigrant Sheds, Queen's Hotel, Rossin House American Hotel, Union Station, T. & N. R. Station, Northern Railway Stations, Brock Street and City Hall, Great Western Station.

DOMINION TELEGRAPH COMPANY.—Head office, cor. Front and Scott streets ; Branches, corner Bay and Front streets, Queen's Hotel, Rossin House, Albion Hotel, Osgoode Hall ; *Grip* office, Adelaide street ; Northern Railway Station.

THEATRES & PUBLIC HALLS.

GRAND OPERA HOUSE.—Adelaide street west.

THE ROYAL OPERA HOUSE.—King street west.

ST. LAWRENCE HALL.—Market buildings, King st. east.

ST. ANDREW'S HALL.—St. Andrew's Market, Richmond street west.

SHAFESBURY HALL.—Y.M.C.A. Buildings, Queen street west.

ALBERT HALL.—189 Yonge street.

CAB REGULATIONS
FOR
THE CITY OF TORONTO.

NORTHERN LIMITS.—Bloor Street.

Division No. 2.—College St., College Av. and Carlton St.

WESTERN LIMITS.

Div. No. 2.—Brook
Street.

Division No. 1.

EASTERN LIMITS.—Riv. Don.
Div. 2.—Parliament
Street.

THE BAY.

TWO HORSE CAB. (1st Division)—For conveying one person from one place to another within the limits of the 1st Division, with a right to return to place of starting within five minutes, 25c. ; two persons 40c. ; three persons, 55c. ; each additional person, 15. ; if detention exceeds ten minutes, half fare is allowed on return, and full fare if detention exceeds fifteen minutes.

TWO HORSE CAB. (2nd Division)—For conveying one person to or from any place in the 2nd Division to or from any place in the first Division, 50c. ; for two persons, 70c. ; and for each additional passenger, 15c. The same allowance for return of persons and for extra fare for detention as in 1st Division.

For every hour completed, with one or four persons, \$1.00 each ; for every fractional part of an hour at the same rate. By the day of ten hours, \$6.00.

SINGLE HORSE CAB. (1st Division)—For conveying one passenger from one place to another within the limits of the 1st Division, with right to return to place of starting within 5 minutes, 20c. ; two persons, 30c. ; three persons, 40c. ; and each additional person, 10c. If detention exceeds ten minutes, half fare allowed on return, a full fare if detention exceeds 15 minutes.

SINGLE HORSE CAB. (2nd Division)—For conveying one passenger to or from any place in the 1st Division to or from any place in the 2nd Division, 30c. ; two persons, 42c. ; three persons, 54c. ; and each additional person, 12c. The same allowance for return of passengers, and for extra fare for detention as in first Division.

For the first hour completed, with one or four persons, 60c. ; each subsequent hour, 60c. ; for every fractional part of an hour at the same rate. By the day of ten hours, \$4.

CHILDREN.—No fare shall be charged for children under eight years in charge of an adult. Children over eight years and under twelve years, charged half price. Over that age, full fare.

POSTAGE RATES.—LETTERS.

Letters Addressed from or to Places in Canada and United States.

Not exceeding $\frac{1}{2}$ oz. in weight, 3 cents.

do.	1	do.	6	do.
do.	$1\frac{1}{2}$	do.	9	do.
do.	2	do.	12	do., and so on.

NEWFOUNDLAND.

Not exceeding $\frac{1}{2}$ oz. in weight 5 cents.

do.	1	do.	10	do.
do.	$1\frac{1}{2}$	do.	15	do., and so on.

Great Britain (whether sent or received by Canadian or New York Steamers.)

Not exceeding $\frac{1}{2}$ oz in weight, 5 cents.

do.	1	do.	10	do.
do.	$1\frac{1}{2}$	do.	15	do.
do.	2	do.	20	do., and so on.

POST CARDS for correspondence between Canada and the United Kingdom have been issued, and may be obtained at the Stamp Agencies at 2 cents each.

City, or Drop Letters, for City Delivery.

Not exceeding $\frac{1}{2}$ oz. in weight, 1 cent.

do.	1	do.	2	do.
do.	$1\frac{1}{2}$	do.	3	do.
do.	2	do.	4	do.

The above rates must in every case be prepaid by postage stamp. When posted wholly unpaid they cannot be forwarded, but will be sent to the Dead Letter Office. If insufficiently paid (not less than one full rate), double the amount of the deficient postage will be charged on delivery, except letters for the United States, which must be fully prepaid.

Registered Letters.

Letters intended to be registered, when addressed to places in CANADA, must be prepaid by stamp, in addition to the postage rates, 2c each. To the UNITED STATES 5 cents each, and to the UNITED KINGDOM 5 cents each. All letters for Registration should be posted 15 minutes before the hour of closing the mails.

REGISTERED LETTER STAMPS have been issued of the denominations of 2, 5 and 8 cents, which may be obtained at any stamp agency.

No letter will be accepted at this Office for Registration addressed either to a fictitious name or initials, and any such Registered Letters received from other offices, or deposited in the Letter Box for Registration, will be sent to the Dead Letter Office.

COSGRAVE & SONS.

**International Medal and Highest Marks
of Merit at Philadelphia, 1876.**

Honorable Mention at Paris, 1879.

For purity and general excellence of quality,
WE WARRANT OUR

Special Stock Ale & Extra Stout

To be Equal to the Best Imported,

and guarantee it perfectly pure, and with reasonable care
to keep sound and in good condition for five years.

LAGER BEER !

Having erected one of the most modern Lager Beer Breweries, with all the latest appliances, and having secured the services of a gentleman whose experience as a Lager Beer Brewer extends over a period of thirty years in the leading establishments of Germany, Austria, and the United States, we are now prepared to supply the trade with Lager Beer, **WARRANTED PERFECTLY PURE, AND EQUAL TO THE BEST PRODUCED IN ANY COUNTRY.** Our Ales, Stout, and Lager Beer supplied to the trade in wood and bottle at shortest notice and at current prices.

COSGRAVE'S PATENT BEER PUMP

combined with the most approved Refrigerator, for preserving the vitality in Lager Beer, so that it may be drawn fresh, cool, and in prime condition for almost any length of time.

We claim that this Air Pump is the **MOST PERFECT** and cheapest invented, and furnish the same within a fraction of cost, but only to those using Lager Beer from our establishment.

BROWN BROS.,

• WHOLESALE AND MANUFACTURING

STATIONERS,

Account Book Manufacturers,

BOOKBINDERS,

Pocket Book and Wallet Makers, Dealers in Book
binders' Materials, Publishers of the
Canadian Diaries, &c.

66 & 68 KING STREET EAST, TORONTO.

Our goods are manufactured from the best material,
by first class workmen, and sold at close prices.

As we buy in large quantities from the first pro-
ducers, we have special facilities for supplying our
customers at the very lowest prices.

A visit from our friends is requested.

Orders by letter shall have our prompt and careful
attention.

BROWN BROTHERS.

Quetton St. George & Co.,

Importers of Wines,

**From the Vineyards of France. Spain,
Italy, Germany & Madeira.**

SPIRITS AND LIQUORS !

Of the choicest brands.

Imported and Canadian

ALES AND PORTER.

Canadian Agents for

BETHESDA MINERAL WATER.

16 King Street West,

TORONTO.

NO. 43 KING ST. EAST, TORONTO.

C. & J. ALLEN,

IMPORTERS,

Fine Gold Jewellery,

— DIAMONDS. —

Electro-Plate and Fancy Goods.

SPECIALTIES:

Colored Gold Sets.

Ladies' Fine Gold Watches.

Gents' Gold Watches.

Colored Gold Chains.

Colored Gold Necklets.

We have the largest and best selected stock in the city to choose from. Visitors will find it advantageous to give us a call before purchasing.

43 King Street East.

C. & J. ALLEN.

**Wedding Presents and Presentation Goods in
Great Variety.**