

CANADIAN SUMMER RESORT GUIDE.



RICE LEWIS & SON,

LIMITED

32 KING ST. EAST.

SPAULDING

LAWN

BASEBALL



TENNIS

REQUISITES.

GOODS.

FISHING RODS.

REELS.

SPORTING AND MILITARY RIFLES.

REVOLVERS, GUNS,

POWDER,

LOADED SHELLS.

WRITE FOR PRICES AND CATALOGUE.

RICE LEWIS & SON,

LIMITED,

HARDWARE MERCHANTS,

TORONTO.



The....

WENDELSOHN

Canada's Artistic,
High Grade

Piano.

Unrivalled for purity and brilliancy of tone, beauty of design and thorough workmanship.

Fourteen Years Before the Public.

..... Warerooms

GOURLAY, WINTER & LEEMING,

188 YONGE STREET, TORONTO.

Factory, 110 Adelaide Street West.



Mining Brokers.

We are the only
Official Brokers for the

Mining Stock Investors Co..

Which has a staff of
Expert Mining Engineers
constantly employed.

If you will correspond with us we can put you in on some safe investments, or if you cannot give your time to watching Canadian mining stocks the Mining Stock Investors Co. of Ontario, Limited, will invest the money for you. This is the only company doing business on that basis in Canada. Send for particulars.

Wilson Barr & Sons,

Sun Life Building,
Hamilton, Ontario.

36 King Street East,
Toronto, Ontario.

Write for a copy of Michie's "Tourist Topics."



A little book of information about Camps, Tents, Utensils, Boats, Canoes, Angeworms, Fish and Game Laws, and many other subjects of enquiry in connection with a holiday on the Lakes and Streams of Ontario.

MAILED FREE.

We provide

**Groceries,
Provisions
and Beverages**

to campers, families and parties of all kinds who spend their holidays among the thousands of lakes and islands of Muskoka and Northern Ontario.

This feature of our business has had our particular attention for nearly 20 years, and we know just how to meet the requirements of strangers to this district.

Write for our catalogue, and write us also for information of any kind; we are always pleased to furnish it if we can.

MICHIE & CO.,

TORONTO, CANADA.

Grocers and Wine Merchants.

ESTABLISHED 1835.

SUMMER EXCURSION LINES AND RATES FROM TORONTO.

Niagara River Line connecting with New York Central, Michigan Central, and Falls Electric Railways. The magnificent steamers *Chippewa*, *Chicora* and *Corona* make four round trips daily to Niagara (32 miles), Lewiston and Queenston (40 miles). Fare, one way, \$1.25; round trip \$2.00; round trip excursions, returning same afternoon, special rates: family book tickets (twenty round trips) \$10.00.

Lakeside and Lincoln in connection with G.T.R. three times daily to St. Catharines (35 miles). Fare to St. Catharines, one way, 75c.; return \$1.25. Family book tickets (ten round trips) \$5.00.

Lake Ontario Navigation Co.—*Argyle* to Charlotte, Sudas, Oswego, connecting with all lines to eastern and southern ports, Kingston, and Alexandria Bay, tri-weekly.

Hamilton Steamboat Line.—*Modjeska* and *Macassa* two trips each, daily, to Burlington Beach (36 miles), and Hamilton (40 miles). Fare, one way, 65c.; round trip \$1.00; round trip excursion 50c.; book tickets (ten round trips) \$5.00.

The Toronto Ferry Co.'s Island Ferries run from 6.30 a. m. until 11 p. m., at intervals of fifteen minutes. Fare each way 5c., or 150 tickets for \$5.00.

Richelieu and Ontario Navigation Co. to Montreal, 1,000 Islands, Quebec and the Saguenay, and Lake Ontario ports east of Toronto.

Persia and Ocean to Montreal.

Garden City to Whitby, Oshawa, Bowmanville, Newcastle, Port Hope and Cobourg.

Northern Navigation Co. from Collingwood and Owen Sound, through 30,000 islands of Georgian Bay to the Soo and Mackinac, Port Arthur and Duluth, via North Shore. From Penetang to Parry Sound—inside channel.

Muskoka Navigation Co. to Muskoka Lakes and Maganatawan River.

White Star to Lorne Park (15 miles west), Oakville (21 miles west).

Special boats to Long Branch (8 miles west), Victoria Park (6 miles east).

Tymon to Grimsby Park 36 miles south-west of Toronto.

Baggage.—Tourists and passengers to Toronto by boat or rail will consult their convenience by availing themselves of the services of the Verral Transfer Company's Officers who meet all incoming trains and steamers, and will take charge of baggage checks, thus relieving passengers of further trouble in looking after the forwarding of their effects. Baggage from U. S. may be forwarded in bond to any point in Canada where a customs officer is stationed.

OPEN SEASONS FOR FISH AND GAME.

Province of Ontario.

FISHING.—Salmon trout and white fish, Dec. 1st to Oct. 31st in following year, both days inclusive; speckled trout, May 2nd to September 14th; *bass, maskinonge, June 16th to April 14th of year following; pickerel (dore), May 16th to April 14th in following year; lake trout, Dec. 1st to Oct. 15th in following year; salmon, May 1st to July 31st, but with fly and rod may be caught to August 31st.

SPECIAL PROVISIONS.—Pickerel, maskinonge and bass may be taken by hook and line only; not more than 12 bass may be caught in one day by any tourist. All bass under 10 inches long must be returned to the water. Speckled Trout.—Hook and line only allowed to be used; 50 only may be caught in any one day; 15 lbs. weight may be taken in any one day; trout 5 inches in length or under must be returned to the water. No netting allowed unless by special license.

NOTE.—*Sportsmen from foreign countries are not charged any license for fishing in Canadian waters when Canadian boats and guides are employed.*

HUNTING.—Quail, Oct. 15th to Dec. 15th; grouse, pheasants, partridges, woodcock, snipe, plover, Sept. 15th to Dec. 15th; swans or geese, Sept. 15th to May 1st in year following; duck, Sept. 1st to Dec. 15th; beaver may not be killed before Nov. 1st, 1900; muskrat, Jan. 1st to May 1st, but muskrat may not be shot during month of April; otter may not be killed before Nov. 1st, 1900. Snipe, woodcock and partridge may not be sold, bartered or exchanged in Ontario, no matter where taken or procured, until Sept. 15th, 1900. Moose, elk, reindeer and caribou may not be killed before Oct. 25th, 1900. Deer, Nov. 1st to Nov. 15th; only two deer may be taken in one season by one person. Hares and squirrels, Sept. 15th to Dec. 15th.

ANNUAL hunting license for Ontario: Residents of Ontario, \$2.00; non-residents, \$25.00.

SPORTSMEN.—For sportsmen in parties of five or more travelling together on the going journey on hunting or fishing expeditions, return tickets, good for one month, will be issued at single first-class fare and a third, and two hundred (200) pounds baggage, consisting of wearing apparel and sportsmen's outfit, such as tents, camp utensils, etc., including a fish or game catch of 50 pounds in weight, will be carried free for each *bona fide* sportsman. One dog will be carried free in the baggage car for each sportsman, but all dogs in excess of this allowance will be charged for at regular rates. Guns in wooden, canvas or leather cases may be taken into passenger cars, but if not so protected they must be conveyed in the baggage car, at the owner's risk. Canoes, skiffs and other boats will not be taken in the baggage car, but must be forwarded by freight train or by express.

TROLLING.—Trolling for salmon trout begins about the 24th May and lasts about two weeks. The Indians think the best time in spring is when the blossoms are on the wild plum trees. In the fall it begins about the middle of October and lasts about the same time. Bass, pickerel and maskinonge will take the spoon freely during the period allowed by the Game Laws.

IN THE warm weather the salmon trout keep close to the bottom. It is then necessary to use a line 200 or 300 feet long, with about two pounds of a stinker, so that the bait may reach a great depth.

*Poles Island and Mitchell's Bay on Lake St. Clair.—Bass, May 6th to April 14th of year following.

Manufacturers and Designers of
**Sailing, Hunting, Paddling and War Canoes, Boats,
Steam and Naphtha Launches, etc.**

Highest Award World's Columbian Exposition, 1893, and Antwerp Exhibition, 1894.

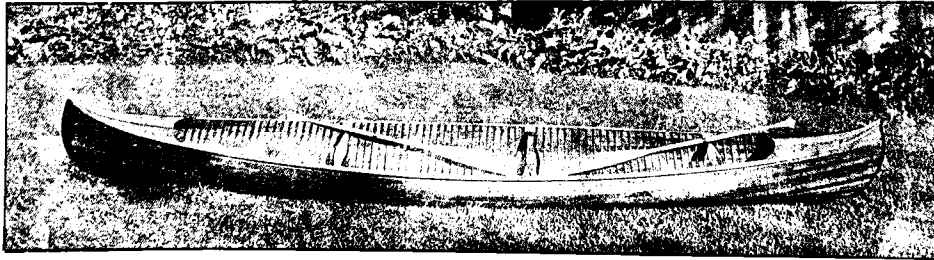
First-class Boat and Canoe Livery run in connection with factory. All kinds of Canoes and Boats kept on hand and rented for Stony Lake and upper waters.

Prices, - - Canoes, \$1.00 per week; Skiffs, \$1.50 per week.

**SEND FOR ILLUSTRATED
CATALOGUE TO**

STRICKLAND & CO., Lakefield, Ont.

ENGLISH ADDRESS, WEST DRAYTON, MIDDLESEX, ENG.



STRICKLAND & COMPANY.
Lakefield Canoe Works,

CANADIAN SUMMER RESORT GUIDE.



ILLUSTRATED SOUVENIR AND GUIDE BOOK

OF SOME OF THE PRINCIPAL
FISHING, HUNTING, HEALTH AND
PLEASURE RESORTS AND
TOURIST AND EXCURSION
ROUTES OF CANADA,
WITH TABLES OF RAILWAY AND
STEAMBOAT FARES AND
CONNECTIONS,
HOTEL RATES, ETC.

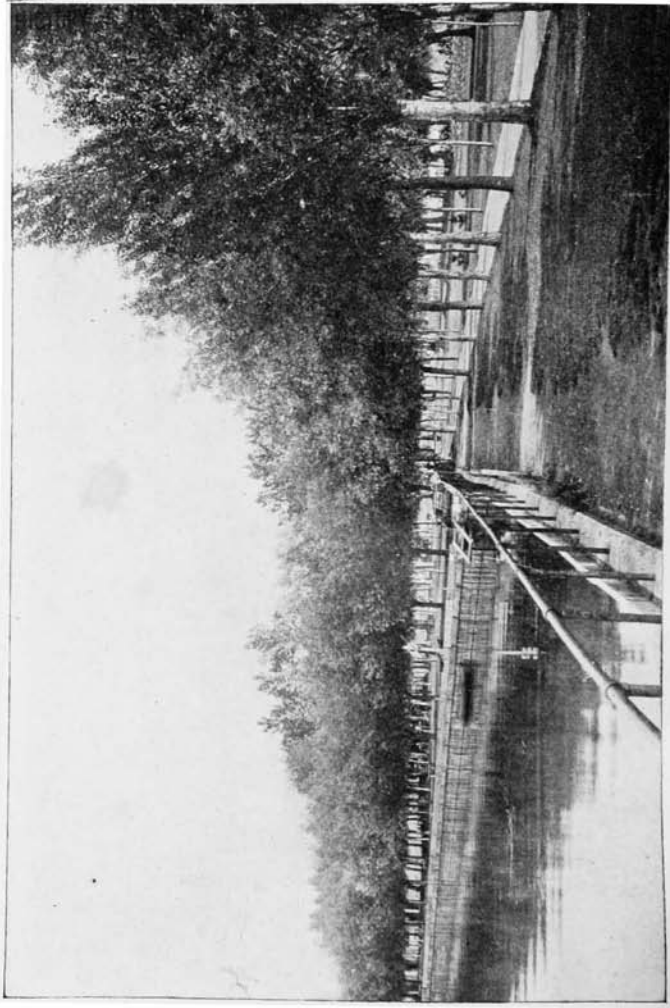
Entered according to Act of Parliament of Canada, in the year of Our Lord One Thousand
Nine Hundred, by FREDERICK SMILY, in the Office of the Minister of Agriculture, at Ottawa.

Edited and Published by
FREDERICK SMILY,
TORONTO.

SEVENTH
EDITION.



TORONTO:
PRINTED BY R. G. McLEAN.
1900.



Island Park, Toronto Island.



CANADIAN
SUMMER RESORT
GUIDE.

TORONTO.



THE reputation of the "Queen City" as a popular summer resort is so well established that it would be superfluous to dwell overmuch on its many claims on the tourist or to expatiate on its varied attractions and advantages. Suffice it to say that every succeeding summer witnesses an ever increasing flow of visitors from all parts of the United States.

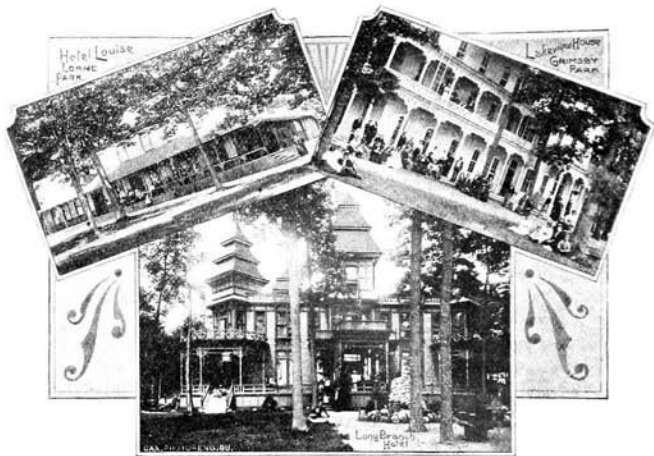
Few cities, if any, possess such a variety of attractions and means of enjoyment as Toronto. It is a beautiful city, with wide, clean streets, massive down-town warehouses of hewn stone and brick, palatial stores thronged with armies of shoppers, handsome club-houses—aquatic, athletic and social—stately churches and imposing public edifices. Uptown, the residential thoroughfares, each with its bright border of green sward, lined with avenues of luxuriant shade trees, the leafy horse-chestnut and sturdy maple (Canada's dear emblem), flanked on either side by the mansions of the wealthy, or the cottages of the artisan. Such a city is Toronto, with a background of low, billowy hills, skirted east and west by beautifully laid out parks, pretty rivers and streams, and situated on a splendid harbor. Across the harbor lies the "Island," beyond and around heave and glisten the clear, cool waters of Lake Ontario. Over all, the bright blue dome of an Italian sky completes a picture as fair as one will find on this continent. No wonder is it that this city is year by year increasing in favor as a most fitting place for holding monster conventions, as an objective point for large excursions, and as an ideal abiding place during the summer season.

PARKS AND PLEASURE RESORTS.

The City of Toronto covers a space of over 16 square miles. Within the city limits there is an area of over 11,000 acres of public parks and gardens. The lake frontage of the city proper is 8 miles in extent. On the eastern confines are Scarborough Heights, Kew Beach, Balmy Beach and Munn Park. Bordering on the western limits are High Park, Humber River and Long Branch. These places are all reached by street car. Seven miles west of Long Branch lies Lorne Park. Grimsby Park is 36 miles south-west from Toronto. These are reached by boat or Grand Trunk Railway. Toronto's street railway system is probably the best and cheapest on the continent;

there is an excellent Sunday service throughout the city and to all outlying resorts.

Among places of special interest to the visitor are Queen's Park, in which are situated the Provincial Parliament Buildings, Toronto University buildings, and many prominent educational structures; Horticultural Gardens; Reservoir Park; Rosedale Ravines; Exhibition Park; Normal School buildings; Osgoode Hall, etc.



Lorne Park.

Long Branch.

Grimsby Park.

TORONTO ISLAND.

The most popular resort of all, however, especially during the mild summer evenings, is "The Island." It is situated about 2 miles south of the city across the bay. The Toronto Ferry Co. furnish an excellent service to and fro up till 11 p.m., at 10 cents for the return trip. Island Park at the eastern end is favored by picnic parties, bathers, boating, and canoeing parties. Very popular with the tourists and Toronto families is the excellent private hotel presided over by proprietress, Mrs. Mead. Hanlan's Point on the west end is patronized by everybody; there is a fine hotel, refreshment and dancing pavilions, and entertainments, band concerts, ball games, bicycle and lacrosse events are held during the season.

INDUSTRIAL EXHIBITION.

For much of its popularity, commercial supremacy and importance Toronto is indebted to the inception and continuance of this annual exhibition, and to the zeal and untiring efforts of its promoters and officers, who have maintained the high standard of excellence, of utility, education and entertainment.

It is the reasonable ambition of the directors and management that in another year Toronto will have and hold a National Exposition, surpassing in importance anything of its kind yet attempted in this country. The Exhibition is held during the first two weeks in September. The street railway accommodation and facilities are taxed to their utmost capacity.



Industrial Exhibition—Crystal Palace or Main Building.

to carry the enormous crowds which attend, and the Grand Trunk Railway issue reduced rates over their system.

EXCURSIONS.

Toronto is the central distributing point for several of the finest excursion trips, pleasure, health, and hunting and fishing resorts in America. To enumerate these would require a separate volume, but from railway and steamboat officials and at the various ticket offices information and advice are easily obtained, while the principal routes will be found tabulated at the front and end of this work.

EDUCATIONAL AND RESIDENTIAL.

The one presupposes the other. The great desideratum for a place of residence is the facilities for every branch of education. The opportunities are here unsurpassed. There are over fifty public schools, three collegiate institutes, several separate schools and colleges, besides universities identified with the principal denominations, ladies' colleges, medical and business colleges, and colleges of music, all conducted in accordance with the highest known standards.

HOSPITALS AND SANITARIUMS.

The salubrity of the climate, the purity and excellence of the water supply, and the splendid drainage system, make Toronto eminently suitable as a health resort and headquarters for recognized sanitariums.



Staff of Nurses—Rotherham House.

Chief among these institutions are the Toronto General Hospital, on Gerrard Street East, situated in extensive grounds; the Victoria Hospital for Sick Children, on College Street, with its summer quarters—the Lakeside Home—on the Island; the Grace Homoeopathic Hospital, on College Street; St. John's (for women); Hillcrest Convalescent Home; St. Michael's; Toronto Home for Incurables, and others.

Regarding private sanitariums, one worthy of special mention is Rotherham House, Dr. Holford Walker's private hospital at 54, 56 and 58 Isabella Street. These three buildings are arranged in a most advantageous manner. Two of the houses are semi-detached, with a brick dividing wall,

the third, detached, is connected by bridges, meeting all requirements where quiet and isolation are desired. The flat roof is converted into a promenade, a popular and very acceptable arrangement for patients on summer evenings. The institution is under the direct supervision of Dr. Holford Walker, a specialist in the treatment of diseases of the nervous system for both sexes, surgical and other diseases of women, rheumatism and heart disease. Besides the regular work in the hospital, the treatment known as the Weir-Mitchell methods, is adopted for diseases of the nervous system, by rest, massage and electricity in its several forms. Heart disease patients are treated by the Schott method of baths and exercise, and the various forms of rheumatism are treated by the dry superheated cylinder baths. There



Dr. Holford Walker's Private Office and Study.

is a trained masseur for the administering of the massage treatment to men, besides a thoroughly trained and efficient staff of nurses for the application of massage and electricity in its various forms for women. Rotherham House, in perfection of detail and efficiency, is one of the most representative establishments of its kind in the country.

HOTELS.

Hotels are, to some extent, the reflex of a city's modes and manners. Viewed in this light, the hostelries of this city are evidence of the homelikeness so noticeable in Toronto. They embody perfect comfort without ostentation, luxury without display.

QUEEN'S.

To thousands of noted travellers from all parts of the world this name is associated with Toronto. The Queen's is conveniently situated within a short distance from the railway station and steamboat wharves. Though in the heart of the business section, it is free from all noise and turmoil of traffic. The appointments are the best, the cuisine excellent. The increasing patronage has rendered immediate enlargement necessary. The proprietors are Messrs. McGaw & Winnett, the latter gentleman also presiding over the well known and fashionable Queen's Royal at Niagara.

ROSSIN HOUSE.

Every city of importance is identified in the minds of the traveller with its leading hotels. Thus we speak of the Fifth Avenue, Waldorf-



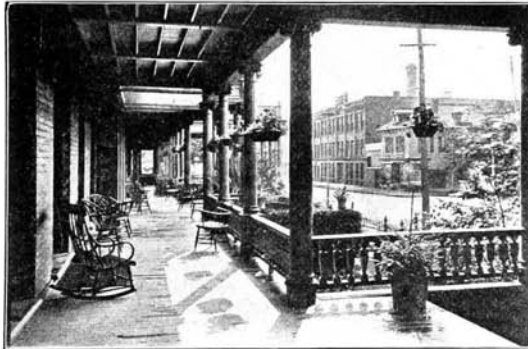
The Rossin, Corner King and York Streets.

Astoria and Murray Hill in connection with New York; Parker's and the Vendome with Boston; Auditorium and Great Northern with Chicago; Windsor, St. Lawrence Hall and Queen's with Montreal; Savoy, Langham, Cecil and Midland with London.

In speaking of Toronto we recall the Rossin. This hotel has entertained Royalty, leading statesmen and distinguished visitors, and is recognized headquarters for the best class of tourist trade.

It is the largest hotel in Toronto and occupies a commanding position on the corner of King and York Streets. It is a five story structure, imposing in appearance, handsomely furnished and appointed, and is only two blocks from the Union Station and close to the steamboat wharves, theatres, clubs and places of interest. The Rossin contains comfortable reading and smoking rooms, wide lofty corridors and spacious parlors. In elegance of equipment, in its menu and modern conveniences it is unsurpassed in the city. The splendid dining room, the several hundred bedrooms, arranged singly and *en suite*, are arranged with every degree of comfort, and luxuriously furnished.

The proprietor, Mr. A. Nelson, with a long and particularly successful experience, gives his careful and undivided attention to the care and comfort of his guests.



Hotel Arlington, Cor. King and John Sts.

Piazza (117½ feet long).

HOTEL ARLINGTON.

To the tourist the above hotel offers undoubted attractions. It is essentially a summer hotel. Its broad piazzas, and balconies and lawns at front and back, are profusely decorated with flowers and shrubs, and furnish an outside seating capacity for 300 people. The various artistically and handsomely furnished rooms open out on these piazzas and balconies, which are a prominent feature of The Arlington.

The bedrooms, single and *en suite*, reception-room and dining-room are large and well furnished. The whole interior is richly decorated. The building is fitted with baths and steam heating throughout. There are passenger elevators and fire escapes from each room.

The Arlington is most centrally located on the corner of King and John

Streets, on the main street car lines, only three blocks from the Union Station, and but ten minutes' walk from the theatres and points of interest. Busses run to and from all trains and boats. Rates \$2.00 to \$4.00 per day. Special weekly and season rates. Mr. F. D. Manchee is the proprietor. Illustrated booklet will be furnished on application.

THE IROQUOIS.

Under the new management of Mr. James K. Paisley, late of the Hotel Royal, Hamilton, the Iroquois is rapidly coming into prominence as



The Iroquois, corner King and York Streets.

one of Toronto's leading hotels. It has been entirely renovated and overhauled; new plumbing, marble lavatories and refurnishing have transformed this hotel into a thoroughly modern hotel. The reading, writing rooms and offices are very attractive and tasteful in design and conception. It is on the corner of King and York Streets, but two blocks from the Union Station and only a short distance from boat landing. Accommodation is obtainable for 200 guests. Rates \$2.00 and \$2.50 per day. Mr. Paisley also conducts the famous Georgian Bay circuit of hotels known under the title of the Iroquois and Georgian Bay Co., and including the Sams Sonce at Moon River and Belvidere at Parry Sound, described more fully later on.

RESTAURANTS.



Harry Webb's Restaurant, 66 Yonge Street.

The restaurants of Toronto, in point of comfort, appointments and excellence of cuisine, are equal to those of most of the large American cities. Prominent in these qualifications is "Webb's," at 66 Yonge Street, near the corner of King Street, Toronto's centre of traffic. The interior is well furnished, lofty and exceedingly well lighted. The menu is select, and the establishment is conducted on modern principles of excellence. With its corps of trained waiters and attendants, the management are able to meet the great demand for dinner parties, social functions, besides the large lunch business. The catering branch of the establishment is at 447 Yonge Street.



Mrs. Thorne's, 66 Bloor Street East. (See page 16).

PRIVATE BOARDING.

Following is a brief description of a few of the representative private boarding houses:—

MRS. THORNE'S.

At 66 Bloor Street East is one of Toronto's fine old residences. Standing far back from the street in spacious grounds, two acres in extent, the building gives evidence of the rest and comfort which were the aim and desire of the builder. It is a substantially built structure, skirted by walks and carriage drives. Beyond, spacious lawns, shaded by lofty pines, fruit, vegetable and flower gardens complete the picture of an ideal summer home. At the rear are the stables, containing a building for bicycles, with a man in attendance to care for them. The house contains large well-lighted parlors, gentlemen's smoking room, and bathrooms, and is handsomely furnished, heated by hot air and steam, and supplied with hot and cold water and all modern conveniences. The situation is most pleasing, all the rooms having an outlook into the grounds. The street car service from the house is most convenient, including Church Street (to Union Station and Rosedale Ravines), Belt Line and Yonge Street routes. There is accommodation for 30 people. An excellent menu is provided, and rates are reasonable—\$1.50 to \$2.00 per day, \$8.00 to \$12 per week. Phone No. 4598. See out page 15.



Mrs. Mead's, 266 Bloor Street West.

MRS. MEAD'S.

Altogether unlike and dissimilar from the ordinary boarding house is the establishment conducted by Mrs. Mead, who is also proprietress of "Ellesmere," the well-known private summer hotel at Island Park. The

handsome residence at 266 Bloor Street West is the home of many of Toronto's best people and the summer quarters of tourists from the southern States. The building is delightfully situated in well-kept grounds facing Queen's Park, near the corner of St. George Street. Belt Line cars pass the door every few minutes, giving access to all parts of the city. It is a red brick structure of modern architectural design. The interior is handsomely furnished, and an air of refinement is evident in all the details of management. Altogether, it embodies all that can be desired in a comfortable home, with a choice menu of every reasonable convenience and luxury. There is accommodation for 35 guests. The rates are from \$1.50 to \$2.00 per day, \$9.00 to \$15.00 per week. Telephone No. 3566.



Frewen House, 7 Queen's Park.

FREWEN HOUSE.

No better location could be chosen for visitors than that occupied by Frewen House at 7 Queen's Park, one of Toronto's fashionable boarding houses. It is directly opposite Parliament Buildings and within stone's throw of the College Street cars, most convenient for getting to all parts of the city and suburbs. The grounds surrounding the house are tastefully laid out with lawns, shrubbery, handsome shade trees and variegated flower

beds. Wide verandahs surround the house, which is built somewhat in the Colonial style. The interior arrangements and furnishings impart an air of luxury and refinement suggestive of the individual care and thought of the hostesses, Mrs. Lawlor and the Misses Dartnell. The bill of fare is equal to that of first-class hotels. The house will accommodate 25 guests. Rates are from \$1.50 per day. Telephone No. 4203.

ELDERSLIE HALL.

A handsome modern building on a handsome modern street. Such is Elderslie Hall at 31 Wilcock Street. This is one of Toronto's residential streets, and, while enjoying the quiet retirement of this pretty neighborhood, the conveniences of handsome stores and swift transportation are close at



Elderslie Hall, 31 Wilcock Street.

hand. At the end of the street the Belt Line cars pass, connecting nearly with the College Street cars running east and west. The house is handsomely furnished, the dining and reading rooms, parlors and bedrooms are large, lofty and well-lighted. An excellent table is set. At the sides and back of the house, which is detached, are velvety lawns, and vine-covered verandahs provide comfortable lounging places. The hostess, Mrs. S. W. Smith, gives her careful personal supervision to all matters concerning the welfare of her guests. There is accommodation for 26 guests. Rates, \$1.50 per day; \$7.00 to \$10.00 per week. Telephone No. 4404.

MARLBOROUGH HALL.

In Marlborough Hall is realized the desire of those who appreciate to the full the requirements of a refined, comfortable home, and one at the same time replete with all the conveniences and advantages of present day methods of domestic economy. The "Marlborough," as will be seen by the accompanying illustration and viewed by its comparative surroundings, gives evidence of its substantial architectural design.

It is, in fact, a new building, modern in all appointments, specially constructed and arranged with a view to the accommodation of tourists and leading families of Toronto.

The latest ideas in sanitation, lighting, heating, etc., have been observed, the rooms are all well furnished, and the *cuisine* is under the care



The Marlborough Hall, 212-214 Jarvis Street.

of competent *chefs*. The dining hall is a spacious apartment, airy and well lighted.

The situation on Jarvis Street, Toronto's principal residential thoroughfare, with its bordering grove of shade trees, is very attractive.

Owing to the great and increasing demand for accommodation, it has been found necessary to build extensive additions, which will, when completed, give accommodation in all for 100 guests. The added buildings will be of the latest and most approved design inside and out. The present accommodation is for 60 guests.

The rates are \$1.00 to \$2.00 per day, \$8.00 to \$12.00 per week. Telephone No. 2684. Tourists visiting Toronto should correspond with Marlborough Hall, 212-214 Jarvis Street, Toronto, Ont.

Temple Building.



THE illustration on the opposite page represents the magnificent Temple at the corner of Richmond and Bay Streets, Toronto, which is the home of the INDEPENDENT ORDER OF FORESTERS. The building has been erected under the special superintendence of Dr. Oronhyatekha, Supreme Chief Ranger of the Order, and will be, if not the best, certainly among the best and most complete of its kind in the Dominion. The erection of this handsome edifice was commenced in the spring of 1895, the corner-stone being laid by his Excellency the Earl of Aberdeen, Governor-General of Canada, on the 30th day of May in that year.

The first two stories are built of Credit Valley brown stone, and the remaining eight stories of brownish red brick, trimmed throughout with Credit Valley and Connecticut brown stone. The whole structure is lined with, and the steel therein is protected by fire-proof porous terra cotta of superior manufacture. As a matter of fact the whole building is as thoroughly fire-proof as modern science can make it, there being nothing to burn except the window frames and sashes.

The building contains two thoroughly fire-proof elevator shafts, in which are three of the largest and finest elevators in the city, besides the stairs, which are of steel, slate and marble.

The roof, also, is of absolutely fire-proof material, on which bonfires might be built without injury to it or the building.

There are four tiers of fire-proof vaults in the building, extending from the basement to the ninth story. To guard against any possible danger from fire, within or without, two standing water pipes have been placed in the building with steam pump to make pressure, and hose connections on every floor.

The Temple is heated by steam, and lighted by electricity produced on the premises by the latest and most improved machinery. Ventilation has received special attention, and the sanitary arrangements are in every way up to date.

The Temple is intended as an office building, but a portion of it will be devoted to other purposes. A bank occupies part of the main floor, while near it is another large monetary institution, and a publishing house occupies rooms on three floors. In the fourth and fifth stories of the western wing are magnificent Court Rooms and necessary adjuncts for Forestry and other society meetings. A magnificent assembly room is immediately above these, occupying the sixth and seventh stories. The eighth story is wholly occupied by the Supreme Court Offices and staff. The ninth and tenth stories are handsomely fitted up for the use of the Masonic fraternity.

The Temple has been erected under the professional supervision of Mr. George W. Gouinlock, who has certainly succeeded in producing an excellently planned and ornate building, and so well proportioned that few would realize when looking at it that it is the highest building yet erected in Canada. As a matter of fact, it is 140 feet high, exclusive of the tower, which adds 45 feet, making a total height of 185 feet from the sidewalk to the top of the tower. From the roof of this eminence an extensive view may be enjoyed of the city and surrounding country, and even Niagara Falls may be seen.

The building is most conveniently located, being only half a block from the new City Hall, less than 200 feet from the City Registry Office, a block distant from Osgoode Hall, and the same distance from several lines of electric cars.

The Temple Cafe, lately established, is a welcome addition to Toronto's justly popular places of refreshment. It is an innovation in restaurants, for hardly will there be found its superior on the continent. On the ground floor or basement are the restaurant and lunch counters. On the first floor are dining rooms superbly furnished and equipped with all that modern art can command; no expense has been spared, and the cuisine challenges comparison with the best. Mr. T. G. Davey, the manager, is a man of long experience, and his record is one of continued success.



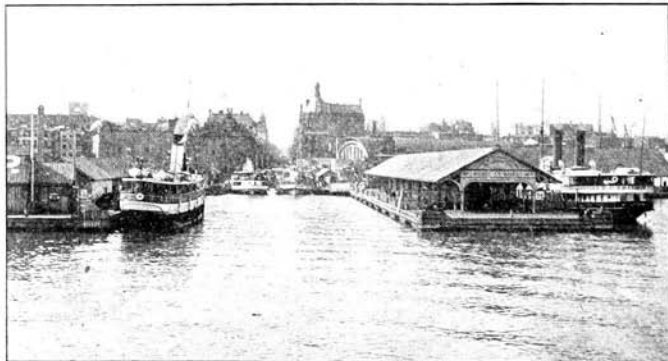
"TEMPLE BUILDING."

Corner Richmond and Bay Streets, Toronto.
Head Offices of the Independent Order of Foresters.

LIST OF LEADING TORONTO HOTELS AND BOARDING HOUSES.

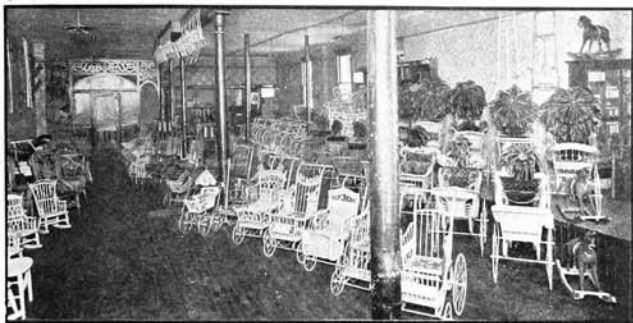
Hotel and Name of Proprietor or Manager.	Accom.	Rates.	
		Per Day.	Per Week.
Queen's..... McGaw & Winnett	400	\$3.00 to \$5.00	
Rossin House..... A. A. Nelson	400	2.50 to 4.00	Special.
Arlington..... F. D. Mancher	200	2.50 to 3.00	
Walker House..... David Walker	200	2.00 to 2.50	Special.
Grand Union..... Chas. A. Campbell	200	2.00	
Palmer House..... J. C. Palmer	200	2.00	\$8.00 to \$10.50
Iroquois..... Jas. K. Paisley	200	2.00 to 2.50	Special.
Elliott House..... J. W. Hurst	100	2.00	Special.
The Stag..... Hall & Downey	60	1.50 to 2.00	8.00 to 10.00
Athlete Hotel (European Plan)..... John F. Scholes		1.00 and up'ds	
Lake View.....	100	1.50 to 2.00	8.00 to 10.00
Albion..... John Holderness	175	1.00 to 1.50	Special.
Richardson House..... S. Richardson	100	1.00 to 1.50	Special.
Gladstone Hotel..... Turnbull Smith	150	1.50	8.00
Rosedale..... John Elliott	50	1.00 to 1.50	Special.
Hotel Hanlan, Hanlan's Point, Toronto	150	2.00 to 3.00	10.50 to 18.00
Island..... L. Sulman			
Ellesmere House, Island Park, Toronto	120	1.50 to 2.50	7.00 to 12.00
Island..... Mrs. Mead			

Boarding House and Name of Proprietress.	Accom.	Rates.	
		Per Day.	Per Week.
Mrs. Mead's, 266 Bloor Street West.....	35	\$1.50 to \$2.00	\$9.00 to \$15.00
Frewen House, 7 Queen's Park..... Mrs. Lawlor	25	1.50 and up'ds	Special.
Mrs. Duckworth's, 59 St. George Street.....	30	1.00 to 1.50	Special.
Marlborough Hall, 212-214 Jarvis Street.....			
..... Miss A. M. Coleman	60	1.00 to 2.00	8.00 to 12.00
Berwick Hall, 232 Jarvis Street..... Mrs. Piyall	30	1.00 to 1.50	6.00 to 8.00
Seaton Hall, 294-6 Jarvis Street..... Mrs. J. E. Bailey	25	1.50 to 2.00	8.00 to 12.00
Giesholm, 254 Jarvis Street..... Mrs. Plek	50	1.00 to 1.50	5.00 to 8.00
Mrs. Carroll's, 421 Jarvis Street..... Mrs. Carroll	20	1.00	5.00 to 8.00
Avonmore, The, 274 Jarvis Street..... Mrs. M. Gray	50	1.00 to 1.50	6.00 to 10.00
Elderslie Hall, 31 Willow Street..... Mrs. S. W. Smith	35	1.50	7.00 to 10.00
Victoria Villa, 218 John Street..... Mrs. B. Brown	40	1.50 to 2.00	10.00
Mrs. A. R. Johnston's, 184 Bloor Street West.....	20	1.00 to 1.50	6.00 to 9.00
Mrs. Ferguson's, 159 Bloor Street East.....	25	1.00 to 2.00	7.00 to 10.00
Mrs. Thorne's, 66 Bloor Street East.....	30	1.50 to 2.00	8.00 to 12.00
Mrs. Robb's, 182 Bloor Street East.....	12	1.00 to 1.50	6.00 to 8.00
Mrs. Braithwaite's, 187 Pembroke Street.....	20	1.50	7.00 to 10.00
Elm House, 22 John Street..... Mrs. Thompson	30	1.00 to 1.50	6.00 to 7.00



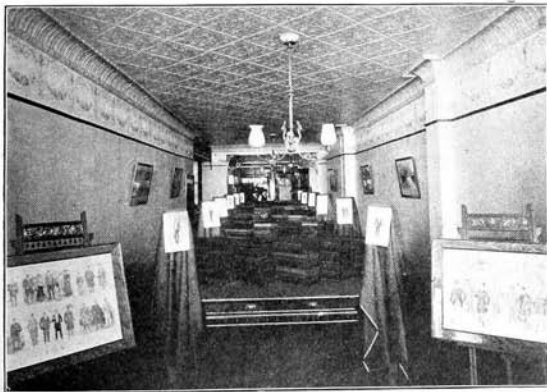
Yonge Street Wharf, Toronto.

TOURISTS Leave your bicycles at home. We rent first-class wheels at reasonable rates by day, week or month.



We can also furnish baby with a Go-Cart or Carriage during your visit.

The **RICHARD SIMPSON CO., Limited,**
240 and 242 Yonge Street, - - - TORONTO.



FRANK BRODERICK & CO.,
TAILORS—IMPORTERS.

N. B.—Special attention paid to the Tourist Trade.

109 KING ST. WEST. - - TORONTO, CANADA.

Your Summer Cottage

Should be painted this year, and it will pay you to use good material. It won't cost much if you buy from us. Write for prices on



"CHAMPION"

(Trade mark registered).

Pure White
Lead and
Ready Mixed
House Paints.

Senour's

Celebrated

Floor Paint

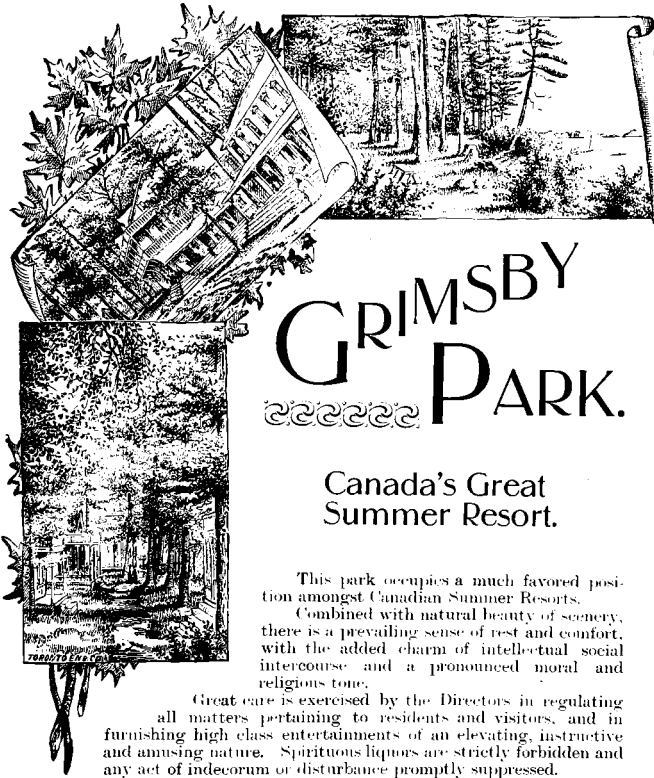
Dries hard as rock.

STEWART & WOOD,

Dealers in

Glass, Oils, Colors, Varnishes, Brushes and General
Painters' Supplies.

82 and 84 York Street, TORONTO.



GRIMSBY PARK.

Canada's Great
Summer Resort.

This park occupies a much favored position amongst Canadian Summer Resorts.

Combined with natural beauty of scenery, there is a prevailing sense of rest and comfort, with the added charm of intellectual social intercourse and a pronounced moral and religious tone.

Great care is exercised by the Directors in regulating all matters pertaining to residents and visitors, and in furnishing high class entertainments of an elevating, instructive and amusing nature. Spirituous liquors are strictly forbidden and any act of indecorum or disturbance promptly suppressed.

Grimsby Park occupies a beautiful position on the south shore of Lake Ontario, on the main line of the Grand Trunk Railway between Toronto and Buffalo, being 57 miles from Toronto and 25 from Niagara Falls. The water trip from Toronto by steamer "Tymon" is a delightful journey of 36 miles. This boat makes daily trips to and from the park.

In the cool groves of forest pines and spreading shade trees are rows of comfortable cottages, two good hotels, the famous Temple, where religious services and entertainments are held, and many beautiful walks and drives. Lawn tennis, quoits, baseball, archery, boating and bathing are among the amusements provided. Grimsby is in the midst of the fruit district of the Niagara Peninsula.

The following are the special attractions for 1900: American Vitagraph Co.; Tissot's Great Paintings and Moffatt Lectures; Rev. Dr. De Witt Miller; Rev. Dr. Robt. McIntyre; Uncle Josh Picture Play Co.; Rev. Dr. J. Potts, Toronto. Bands of the 17th Batt. of St. Catharines and 13th Batt. of Hamilton. Full information will be cheerfully furnished by H. B. ANDREWS, Manager, 45 Queen St. East, or Grimsby Park, Ont. P. O. Box 524.

The Northern Lakes of Ontario.

JACKSON'S POINT, LAKE SIMCOE.

Of Ontario's many magnificent bodies of water, Lake Simcoe possesses superlative attractions. It is the highest, being 474 feet above Lake Ontario and 708 feet above sea level. It is the most easy of access from Toronto. Its waters are of the purest, always cool and refreshing, and in many places teeming with fish, principally black bass, pickerel (dore), salmon trout.



One of D. W. McDonald's Cottages, Jackson's Point.

white fish and maskinonge. In extent it measures about 30 miles from north to south, by 20 miles from east to west.

Jackson's Point lies on the south shore, distant only 55 miles, or two hours' railway journey from Toronto by the Grand Trunk. The "Point" is deservedly popular; it is an ideal summering place for families; the numerous cottages are all occupied every season, and the hotels are always crowded with merry pleasure seekers. This neighborhood enjoys special immunity from mosquitoes and hay fever. In the neighboring village of Sutton West, two miles distant, are comfortable hotels and well stocked stores, which supply residents at the Point with every household necessity.

There is a special Saturday train service from Toronto to Jackson's Point, trains leaving the city at 1.30 p.m., arriving at the Point at 3.30; leaving Jackson's Point at about 8 a.m. on Monday and reaching the city at 10 a.m.

The facilities for wheeling, riding, driving, boating and bathing are unsurpassed. The visitor will be agreeably surprised at the beautiful roads

for miles lined with well trimmed cedar hedges, which enclose green pasture and well tilled farm lands, handsome residences and private parks. In all this is traced the handwork of two public benefactors, Dr. F. C. Sibbald of "The Briars," and Hugh Sibbald of "The Hall," owners of two handsome country seats. To the munificence of these two gentlemen the people are indebted for the beautiful Anglican Church in this neighborhood.

JACKSON'S POINT HOTEL AND COTTAGES.

While Jackson's Point Hotel is not, as will be seen by the illustration, an imposing structure, it is nevertheless extremely comfortable and well conducted. As its name indicates it is situated, in common with a pretty row of cottages, on the Point proper. This is a jutting headland, rising



Jackson's Point Hotel, Jackson's Point.

high above the lake and the surrounding country, continuously swept by the cool breezes from the north-west. This property, which is owned by Mr. D. W. McDonald, is an ideal hotel site, and has been chosen by The Ontario Summer Hotels Co. of Toronto as a site for one of the hotels of the proposed Northern Ontario Hotels Circuit.

Jackson's Point Hotel occupies a commanding position overlooking Lake Simcoe and the neighboring country for miles around. It is flanked by beautiful cedar groves intersected by winding paths, their cool shady depths inviting rest and shelter from the noonday sun. In front of the hotel the ground slopes gradually down to extensive playing fields, where guests can indulge in games of baseball, lacrosse, &c.

To the right of the hotel are the furnished cottages, eight in number. They are clean and comfortable and contain five rooms each, with detached kitchens. The rental is \$50 to \$75 each for the season. On Mr. McDonald's property are some of the best building lots in the neighborhood for summer cottages. Information regarding accommodation should be sought from Mr. D. W. McDonald, Sutton West, Ont.

Excursion trips to all points on Lake Simcoe are made by the steamer Enterprise, lately enlarged and remodelled, and fitted with electric lights and modern conveniences.

PINE PLAZA.

Although but recently established, this resort at Jackson's Point has sprung at once into popular favor with tourists from cities of Canada and the United States.

The title of the house is suggestive of its surroundings. It is set in a magnificent pine grove, one of the greatest charms of the neighborhood, and is divided from the glistening waters of Lake Simcoe by a green lawn, across which the gaze wanders over the heaving bosom of the lake to rest on distant verdure clad islands and the tinge of the horizon.



Pine Plaza, Jackson's Point.

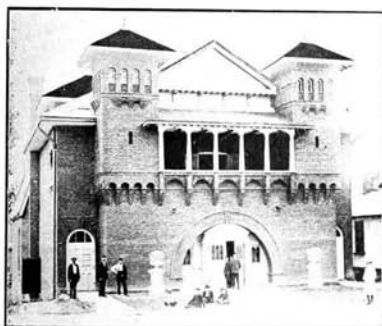
Through the cool depths of the grove, winding walks and drives, diverging from the house, lead past numbers of pretty cottages, or, plunging into the recesses of the glade, emerge later on to the main roads, unexcelled for driving and wheeling. The shelving beach in front of the house affords splendid bathing grounds, and there are good fishing points nearby.

Pine Plaza, which is a new building, is well designed and furnished. The table is supplied with fresh milk and fruits, and a substantial dietary is provided. A good stock of boats is kept, also a steam launch for fishing parties and moonlight excursions.

The hotel, which will accommodate 60 guests, will open on June 1st. Rates are from \$1.50 per day, \$6.00 to \$8.00 per week. Mrs. A. M. Lake is the proprietress and Mr. A. J. Lake manager. Address, Pine Plaza, Sutton West, Ont.

On the N. and N. W. Division of the G. T. R.

The first tourist resort of importance reached by this branch of the Grand Trunk Railway System—the highway to the famous lakes and highlands of Northern Ontario—is



Barrie Opera House.

As Toronto is the central distributing point for tourists from the Eastern, Western and Southern States, so Barrie is the hub of travel in the northern district of Ontario.

Barrie as a railway centre occupies a unique position, which a glance at the diagram on the following page will show. It is only 64 miles (about two hours' journey) from Toronto, on the

main line north, and enjoys an excellent service of four daily trains to and from that city, including the popular Muskoka Express, which stops at Barrie on up and down trips.

The various branch lines of the G. T. R. radiating from this town give easy access also to the Great Lakes, notably to Collingwood and Penstang, two well known resorts on the Georgian Bay, distant 33 and 39 miles respectively. Connection is made with the south-west by the Hamilton branch of the G. T. R., the City of Hamilton being 96 miles distant.

The main line of the G. T. R. taps the Muskoka Lakes at Gravenhurst, 48 miles north, and extends to North Bay (163 miles), connecting there with the C. P. R. for the North-West and Pacific coast.

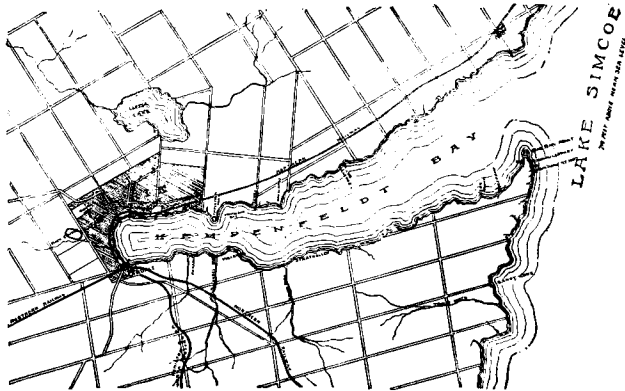
Few towns in Canada are so picturesquely situated as Barrie. The first glimpse of the town is obtained at Allandale, where a delightful scene is presented to the traveller. Spread out before his view lies Kempenfeldt Bay, a beautiful sheet of pure crystal water, shimmering in the sunlight. Across this bright expanse nestles the pretty town, clinging to the curved

shore line opposite, with the rippling waves lapping its feet. The cut on p. 32 gives a good view of the town across the bay.

As the train sweeps around the curve, skirting the shore at the end of the bay, a nearer view is obtained.

Arrived at Barrie, a closer intimacy with this favored resort and its inhabitants will but strengthen the first favorable impressions.

The main thoroughfare—Dunlop Street— which is illustrated on p. 33, would do credit to much larger centres; the stores are bright and well supplied with all that city emporiums afford; the hotels are well equipped, commodious structures. Strolling through the residential streets, fresh beauties are revealed. Cool shady avenues rise, terrace above terrace, to the wooded hills above, which form a background to as delightful a scene as one could wish to contemplate.

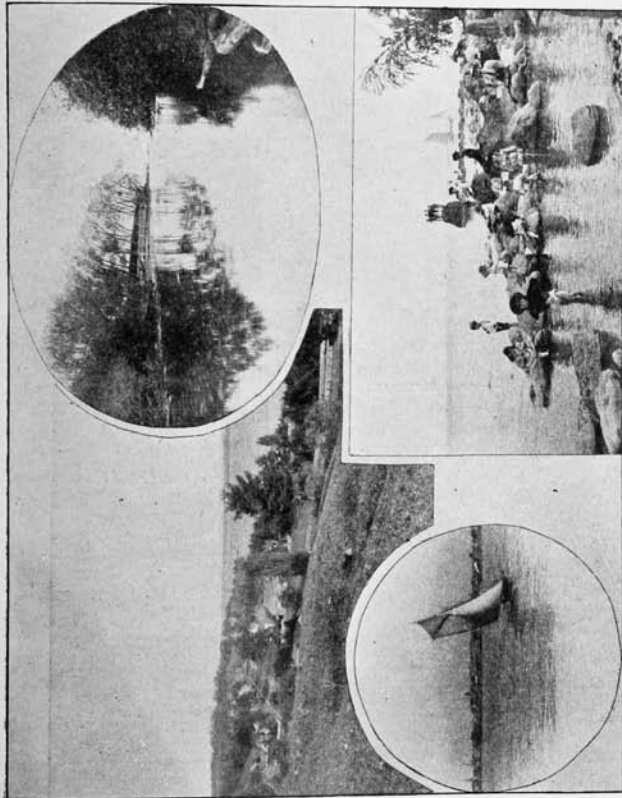


N. & N. W. Div. G.T.R.

If the first sight of Barrie is charming, the view from the town itself is even more so. Across the stretch of water (about a mile wide) the undulating verdure clad hillsides, dotted here and there with an occasional summer cottage or group of farm buildings, presents a scene of restful beauty. To the east the pine clad, ever widening shores of Kempenfeldt Bay extend for a distance of nine miles, and the gaze wanders over this beautiful vista until lost in the blue haze of Lake Simcoe.

The town is about 160 feet above Georgian Bay, 500 feet above Lake Ontario, and 730 feet above sea level.

Situated at this altitude, continually swept by the bracing, pine-scented, north-west winds from the great lakes, Barrie offers inducements to hay fever patients which alone make it a popular resort. In this respect Barrie is preeminently a much favored spot. Sufferers from hay fever, that dreaded malady of the more southerly portion of this continent, experience instant relief, and enjoy perfect immunity during the summer season. In this



Scenes Around Barrie.



Scenes at Big Bay Point near Barrie.

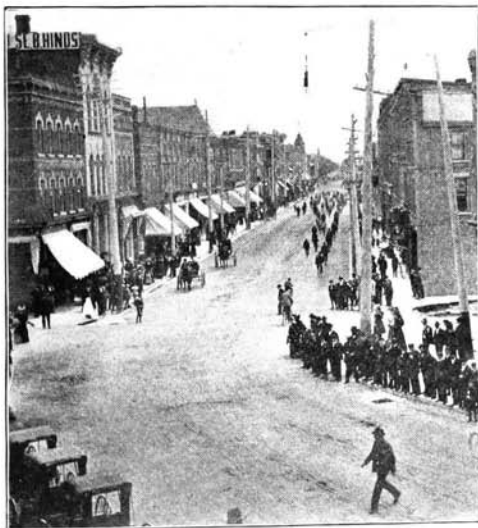


View of Barrie from Allendale.

region of lakes and swift running streams, with an atmosphere charged with ozone and balsamic odors, hay fever is practically unknown.

It should also be borne in mind that the season is much longer here than at most northern resorts. There are no black flies and mosquitoes to trouble the visitor in early summer, and the advantages of civilization render the late fall months most enjoyable and free from any occasional inclemencies of weather.

Besides being a great railroad centre, Barrie is a favorite excursion point.



Dunlop, or Main, Street, Barrie.

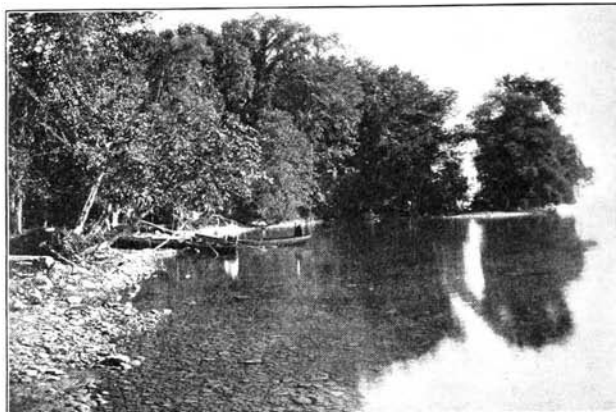
Lake Simcoe is noted for the many attractive spots on its shores, such as Peninsular Park and Mounmouth Park at Big Bay Point, 9 miles distant (more fully described later on), Orillia, Beaverton, Jackson's Point, Monton Park and many other localities. Daily trips are made to these places by the well appointed passenger steamers which traverse these waters.

Lake Simcoe is one of the most beautiful and highest of Ontario's large lakes, affording abundant sport for the angler. The principal fish caught are brook and salmon trout, white-fish, herring, maskinonge, black bass, pickerel (doré) and perch. Good deer hunting, rabbit, duck and partridge shooting can also be enjoyed in the fall a few miles from the town.

Every form of amusement is to be found here at its best. Within the

town limits are excellent golf links, on the athletic grounds can be witnessed cricket, baseball, lacrosse, etc.; bowling and lawn tennis find many devotees of these healthful games.

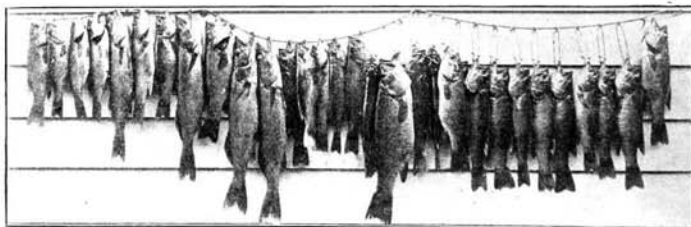
Boating, canoeing, sailing and bathing are naturally much favored



Scene on Little Lake, near Barrie.

sports in the bay, first-class boats, canoes, yachts, etc., being obtainable from the different boat builders in the town.

For bicyclists, the roads in and around Barrie offer just the inducements that will tempt the wheelman and wheelwoman. They are hard and



A String of Beauties.

level and intersect a country of exceeding richness and beauty of scenery.

Fed by such a rich tributary district, of which it is the centre, Barrie is naturally a thriving, prosperous, well equipped community. It is the county town, deriving considerable importance from this status and



Lover's Creek, near Barrie.

doubtless considerable emolument. It is well supplied with financial institutions, branches of Bank of Toronto and Canadian Bank of Commerce, besides a first-class private bank, etc.; the professional element is well represented, while the spiritual needs are ministered to by ten churches representing all denominations.

The county buildings are substantial edifices, the private residences are handsome and well situated.

As an educational centre, Barrie takes a foremost position, possessing, besides public, separate and private schools, a Collegiate Institute, with accommodation for 200 students. It also enjoys the advantages of a General Hospital, a well furnished Public Library and a handsome Opera House, one of the prettiest

and best fitted in Canada; see illustration on page 29. As a manufacturing centre it is growing in importance, several new industries having recently been established there. The municipality operates its own electric light and waterworks.

But above and beyond all, Barrie is a residential town and pre-eminently a resort for tourists. Its population of nearly 7,000 inhabitants is largely made up of wealthy retired people, who have wisely chosen this pretty town, with its numerous attractions and advantages, as an ideal residential centre.

During the summer season the band of the 35th Battalion gives open air concerts, providing suitable and enjoyable music for promenaders and loungers in hotel balconies.

Reverting to the tourist features of this place, mention must be made of some of the principal points of interest.

A locality well worthy a visit is Lover's Creek. This beautiful retreat, which is represented on this page is a favorite rendezvous for boating parties. It is only about a mile and a half distant on the opposite shore from Barrie, being easily reached by boat or canoe.

Little Lake, a well-known fishing resort about two and a half miles distant, is much patronized by picnic, walking and driving parties. In the



A Lake Simcoe 'Lunge.

A Lake Simcoe 'Lunge.

fall there is good duck shooting in the wild rice beds. A good illustration of this pretty place is shown on page 34.

Cook's Bay and Holland River, some miles away, are good fishing points, while there are many streams within a radius of from 10 to 20 miles, or say a drive of one or two hours, where excellent speckled trout fishing will reward the enthusiastic angler.

Duclo's Point is a good objective point for a day's fishing. It is reached by the regular excursion boats and is the home of the black bass and pickerel. The representation on page 35 of a tourist from Columbus,



In Camp Near Barrie.

Ohio, with a fair-sized maskinonge, caught in September, 1889, on Kempenfeldt Bay, is suggestive enough to require no further comment.

Camping sites there are in abundance on neighboring shores, and summer cottages are often available during the summer season.

The citizens of Barrie give a hearty welcome to all visitors, and any information not contained in this article will be readily furnished, on enquiry, by the Secretary of the Board of Trade, Mr. J. H. Bennett.

There are several good hotels in Barrie, two of which are here illustrated, the Queen's and the Barrie Hotel, situated on the main street.

THE QUEEN'S

is a commodious structure, substantially built and arranged with a view to the comfort and convenience of guests. It is popular with tourists, who appreciate the excellent bill of fare provided and the lofty, well furnished and airy rooms. The house contains spacious parlors, smoking rooms and large dining room. It is but a few steps from the railway station and boat



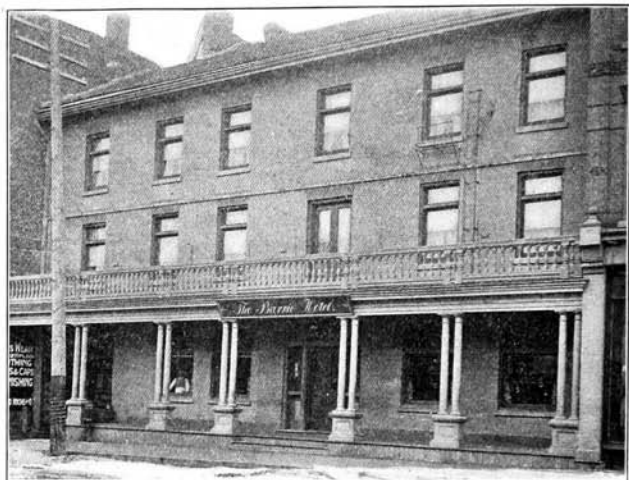
Queen's Hotel, Barrie.

landings. Rates are \$1.50 to \$2.00 per day, \$10.00 per week. Accommodation for 100 guests. Mr. D. W. Leroy is the manager.

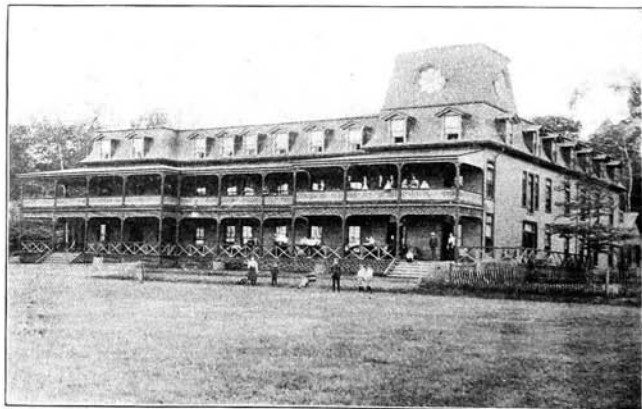
THE BARRIE HOTEL

faces the railway station and steamboat wharves, and commands a view across Kempenfeldt Bay. The proprietor, Mr. A. W. McCarthy, gives his personal attention to the care and comfort of his guests and supervises the various details of management. The Barrie, lately acquired by Mr. McCarthy, has been renovated throughout and preparations made for the accommodation of tourists. The furnishings, menu and conveniences are good. There is accommodation for 60 people. Rates \$1.50 to \$2.00 per day, \$10.00 per week. The Barrie is represented on next page.

Barrie has already been described as a centre of tourist travel and headquarters for the well-known resorts at Big Bay Point. These we will now describe more fully.



The Barrie Hotel, Barrie. See Page 37.



Peninsular Park Hotel, Big Bay Point, Barrie.

PENINSULAR PARK HOTEL, BIG BAY POINT, LAKE SIMCOE.

This popular hotel is beautifully situated within forty minutes' sail from Barrie. Guests are conveyed by steamer from the town wharf direct to the hotel. Peninsular Park Hotel, which was erected at a cost of \$50,000, is a fine structure, fitted with all modern improvements, electric lighted and handsomely furnished throughout. The hotel has lately been renovated and improved and extensive additions are contemplated in order to meet the growing demand for accommodation. The surrounding grounds, forty acres in extent, are very picturesque; they comprise a fine grove of pines, affording grateful shade, and through the winding paths are many pretty walks. In the vicinity of the hotel are good, level roads, specially suitable for bicycling and driving.

There are extensive lawns for tennis, croquet, bowling, etc.; fine bowling alleys, and every facility for the best boating, bathing and fishing. The menu is excellent. Terms at this hotel are \$2.00 per day; \$8.00 to \$12.00 per week; special rates for families. Address, The Manager, Peninsular Park Hotel, Big Bay Point, Lake Simcoe, Ont.



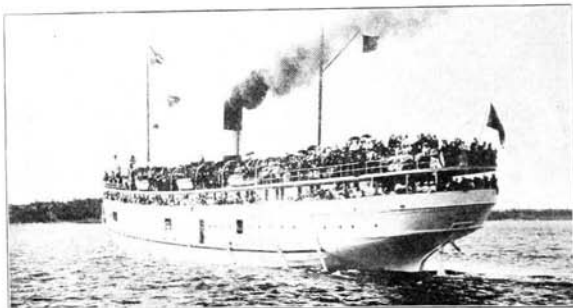
Monmouth Park Resort, Big Bay Point, Barrie.

MONMOUTH PARK RESORT (LATE ROBINSON HOUSE), BIG BAY POINT, LAKE SIMCOE.

Monmouth Park possesses in a marked degree that happy combination, so rarely met with in summer resorts, of modern conveniences with the untrammelled delights of country life and the very best and choicest of

country dietary under experienced intelligent management. It is 9 miles or 40 minutes sail from Barrie, across Kempenfeldt Bay.

The "Park" contains a beautiful pine grove, which forms a background to the hotel and grounds. In front is a level ten acre lawn, bordering on the beach. In connection with this resort, but entirely separate from the grounds, is a fine stock farm of 150 acres, on which are thoroughbred Jersey cows, calves, etc., and thoroughbred brood mares. The table of the hotel is supplied with fresh milk, cream, eggs, butter, fowl and meat, and fruits in season, from the adjoining farm and garden. On the property are from 12 to 15 summer cottages owned by tourists, also suitable building lots for lease. In connection with the hotel is a wine room where the best brands of liquors and cigars can be had. Boating, bathing, fishing, golf, lawn tennis, bicycling and dancing in the fine new pavilion, are features of this popular resort. The fishing consists of black bass, salmon trout, whitefish



S.S. "Majestic" of Northern Navigation Co.

and maskinonge. The hotel has recently been enlarged and improved and will accommodate 75 guests. Rates \$1.50 per day, \$8 to 10 per week.

The Monmouth Park steamer "Conqueror," thoroughly overhauled and rebuilt, accommodating 75 people, runs in connection with the hotel, meeting the Muskoka express and all trains at Barrie. Information can be obtained by addressing the manager, Monmouth Park resort, Big Bay Point, P. O., or D. W. Paul, 213 Board of Trade, Toronto.

MIDLAND—GEORGIAN BAY.

One of the most important shipping ports on the Georgian Bay is Midland. This town of nearly 2,500 inhabitants, is 33 miles west of Orillia and 125 miles from Toronto or Port Hope on the Midland division of the Grand Trunk Railway, about 5 hours journey from Toronto.

Midland harbour is the finest and best sheltered on these waters. The lake traffic is enormous, the largest steam barges and sailing vessels from Port Arthur and Duluth, unloading their immense cargoes of grain into the

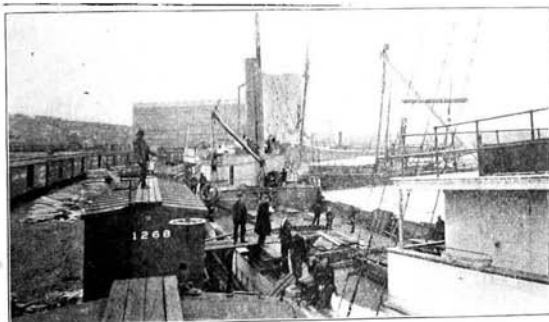
mammoth Grand Trunk elevators for transhipment to the Atlantic seaboard, and reloading with lumber for Buffalo, Chicago, and western ports.

Midland contains comfortable hotels, good stores and is the centre of a splendid hunting, fishing and tourist campers' country.

Another large industry has lately been added to the growing and prosperous town, that of the Canada Furnace Co., of which John Drummond, of Montreal, is president.

ANDERSON'S FISH PRESERVES, GEORGIAN BAY.

While an abundance of fish is to be found in almost all the northern waters of Ontario, still it is well worth while knowing that within short distance of Toronto, there is a first-class, extensive, private fish preserve. This is known as Anderson's, and consists of a beautiful lake 2½ miles long by 2 miles wide. It is situated 3 miles from Muskoka Mills on the Georgian Bay—inside channel. The railway point is either Midland or Penetang.



Steam Barge from Chicago, unloading on to G. T. R. train at Midland.

thence by S.S. "City of Toronto," of the Northern Navigation Company, to Muskosh Dock, or by S.S. "Masonic"—excursion boat—daily from Penetang, direct to Anderson's wharf at fishing grounds. This lake is well stocked with Black Bass, ranging from two to five pounds; Pickerel (doré) two to eight pounds; Muskongee, up to twenty-five pounds. The water is of various depths, down to eighty feet, affording abundant feeding grounds and a natural fish hatchery. The shores are deeply indented with picturesque bays and inlets and the surface of the lake is dotted with numerous well-wooded islands.

The property comprises in all 2,000 acres, the densely wooded shores affording cover for deer, bear, foxes, partridge, and fur-bearing animals. There is good duck shooting in the fall. There is accommodation for a limited number of fishing parties and tourists at rates from \$1.50 per day, including fishing privileges. Address all communications to J. J. Anderson, Victoria Harbor, Ont.



ORILLIA.

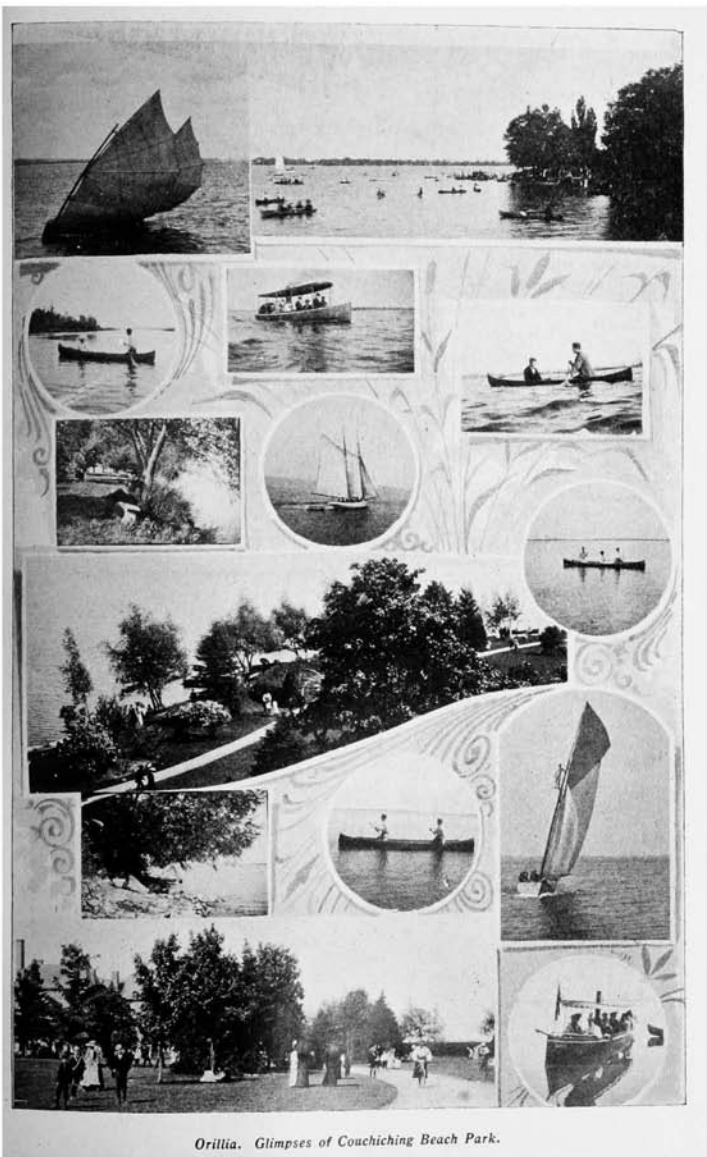
Since the work of making Orillia's advantages as a summer resort known has been undertaken in an organized way, the town and the pretty lake upon which it is built have advanced by leaps and bounds in popular favor. Last summer the available accommodation was taxed to its utmost by the tourists who flocked thither from Canadian cities and from across the border, particularly from the Southern States. In consequence of this, preparations have been made for a large increase in the number of visitors during the coming summer.

Several new resorts have been opened on the shores of Lake Couchiching, improvements have been made in the hotels of the town, and a number of additional private houses have opened their doors to visitors. This latter class of accommodation is the distinguishing feature of Orillia's bid for the tourist trade, the Board of Trade having persuaded many of the best homes in the town to take in summer tourists, at very reasonable rates, and having prepared a list of these boarding places which will be gladly forwarded by the Secretary to anyone who may apply for it. Orillia is also making a specialty of renting furnished residences (many of them splendidly appointed homes, from which for one reason or another the owners are to be absent for the summer) and furnished cottages, and quite an array of these were offered through the Board of Trade this spring. In view of the large amount of space devoted to the subject in last year's Guide, it is scarcely necessary to state at length Orillia's many attractions and advantages as a summer resort. Suffice it to say that for beauty of scenery, healthfulness of surroundings and opportunities of enjoyment it is unsurpassed, while in the combination of all the comforts of civilization with the freedom from restraint that makes roughing it popular, Orillia occupies a position that is quite unique.

Built upon a peninsula between Lakes Simcoe and Couchiching and famed by the breezes of both lakes, this charming summer resort is always cool. It may be added that additional means of amusement are being provided for this season. For one thing, two new steamers have been built to ply on lakes Couchiching and Simcoe, making four excursion boats of various sizes with Orillia as their headquarters. For another, a Canoe Club has been organized, which promises to provide abundance of aquatic sport. Considerable improvements have also been made in the town's beautiful lakeside resort, Couchiching Beach Park, which, by the way, offers unrivalled attractions as an objective for excursions.

Enquirers can always depend upon receiving prompt and reliable information from the Secretary of the local Board of trade.

It may be mentioned in passing that there are still many excellent sites round Lake Couchiching which are worthy the attention of persons on the look out for desirable locations for summer residences.



Orillia. Glimpses of Couchiching Beach Park.

Penetang—Parry Sound District, Georgian Bay.

PATTERSON-PAISLEY HOTEL CIRCUIT.

In the whole Dominion of Canada there exists no more delightful scenery than among the 10,000 Islands scattered along the route between Penetanguishene and Parry Sound, in the Georgian Bay.

The hotels comprising the above circuit are the Penetanguishene at Penetang, which, with the Hotel Royal at Hamilton, is under the management of Mr. E. A. Patterson, and the Sans Souci at Moon River, and Belvidere at Parry Sound, managed by Mr. James K. Paisley, proprietor also of the Iroquois, Toronto, previously referred to in the Toronto section of this work. The starting point of this trip is

PENETANGUISHENE.

One hundred miles or 4 hours' trip from Toronto and 40 miles from Barrie on the G. T. R. Northern Division where the Penetanguishene Hotel is located.

With the early history of Canada, Penetanguishene and the country thereabout is closely associated.

The sufferings of the early Jesuit missionaries patiently undergoing the greatest hardships and tortures in furthering their cause; the fierce tribal warfare between the Iroquois and Huron Indians, invest the place with an air of romance which still lingers in the dark forest depths and on the



Summering at Bass Island, near Penetang.

streams and waters where the redman's canoe was erstwhile the only craft threading the mazy channels.

The town itself, one of the oldest in Canada, is now the scene of far different events. It has come to be known as one of the most popular summer resorts in Northern Ontario and in the summer season is thronged with tourists. It is a picturesque place overlooking Penetang harbor, its streets reaching down from a height of land to the water's edge. The population is over 2000; the stores are well stocked with every requisite for camper and tourist, hunter and fisherman. A list of the leading supply houses will be found at the end of this work.

It is quite abreast of the times and contains good hotels, handsome



The Penetanguishene Hotel, Penetang.

churches, a lending library, electric lights, waterworks, etc., the professions are all well represented. The headquarters for tourists is the justly popular

PENETANGUISHENE HOTEL.

The location of the Penetanguishene is most attractive. It stands in a pretty natural park of about 30 acres, at an altitude of 577 feet above sea level and 337 feet above Lake Ontario. In front of the hotel is a good sandy bathing beach. From the extensive verandahs, balconies and windows of the hotel a grand view is presented of the harbor, 5 miles in length, and the Georgian Bay beyond, with its matchless and varied scenery, the gateway to the 30,000 Islands. This is the starting point for the journey through the inside channel to Parry Sound by the Northern Navigation Co.'s

steamer City of Toronto and excursion trips of the Penetanguishene Navigation Co.

The hotel grounds, with a frontage of one-third of a mile on the water front, are electric lighted, underbrushed and well wooded. They contain fine tennis and bowling lawns, flower parterres and charming walks. In the neighborhood are many opportunities for boating, fishing and hunting, boats



Sailing on Georgian Bay.

and steam launches being available for parties to adjacent islands and fishing and hunting grounds. Fish are very plentiful, principally black bass, pickerel (dorc) and maskinonge. In the town are excellent livery stables, and driving along the country roads is most enjoyable. There are good golf links in connection with the hotel.

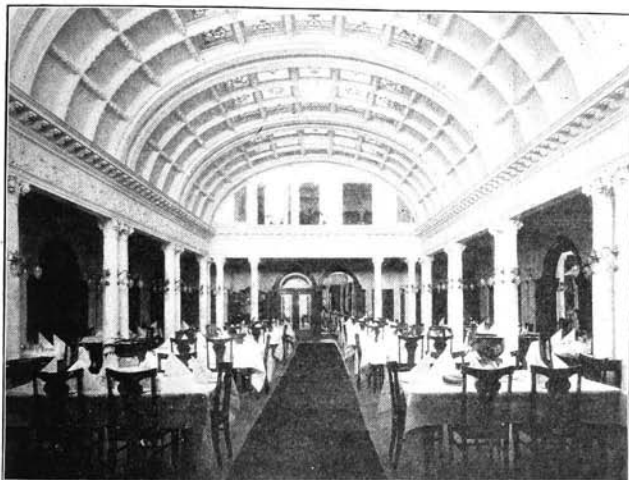


Go Home Islands, near Go Home River, Penetang.

Many noted improvements have this season been made in the hotel. The guest capacity has been increased. Daily instrumental and vocal concerts by first-class talent, under the able leadership of Prof. F. Jennings, leader of the Grand Opera House, Toronto, have been arranged for. The Social Hops on Saturday nights are a great feature. Mr. J. Hackett, of

Hamilton, Vice-President of the Association of Professors of Dancing, and a skilled exponent of the terpsichorean art, is master of ceremonies in the large ballroom, and will conduct all dances and social affairs, and also give private instruction where desired. Added interest will be given to the series of entertainments by the recitals of Miss M. Josephine Hunt, the clever instructress of elocution at Loretto Abbey, Hamilton.

The hotel is supplied with baths, hot and cold water, steam heating, electric lights, telephone and telegraph. The rooms are lofty and well furnished, a new dining room has been added, including separate servants' and children's dining room. A special feature is the installation of the latest and most approved sanitary appliances.



Dining Room, Hotel Royal, Hamilton.

The Penetanguishene is a noted resort for sufferers from lay fever, malarial and nervous troubles, the bracing air of Georgian Bay, charged with the health-giving balsamic odors of great pine forests, acting as an immediate tonic to overworked systems.

Rates are \$2.00 per day and upwards, \$10.00 per week and upwards. Mr. E. A. Patterson, the proprietor, also conducts the Hotel Royal, Hamilton, to which place all communications should be addressed up to June 25th, after that date to the Penetanguishene, Penetang, Ont.

HOTEL ROYAL, HAMILTON.

In connection with the Penetanguishene management, it will be in order to refer here to the New Royal Hotel, or, as it is now called, Hotel Royal, of Hamilton, which has lately been remodelled at a cost of \$100,000, and is to-day

one of the best appointed and most luxuriantly furnished hotels in Canada. It is in every respect first-class and a credit to the country. It would be hard to conceive of more perfect interior arrangements. The visitor is at once impressed with the ornate decorations, marble floors, counters, wainscots and massive marble pillars. From the richly panelled and vaulted ceilings hang festoons of brilliant electric lights. The bar is strikingly handsome in its mahogany finish and broad mirrors and the marble finished lavatories are of the finest construction.



View from Sans Souci, Moon River District.

The accompaniment of orchestral music during dinner adds to the sense of elegance and refinement of this model hotel. It is needless to say that the menu is of the choicest description and variety. The rates at the Hotel Royal, which accommodates 200 guests, are from \$2.50 to \$4.00 per day. Mr. E. A. Patterson, as already mentioned, is the proprietor.

We will now recur to the Parry Sound trip and describe the remaining hotels of the Patterson-Paisley circuit under the management of Mr. Jas. K. Paisley of the Iroquois and Georgian Bay Co., viz.:

BELVIDERE AND SANS SOUCI.

As the Iroquois Hotel has been already dealt with in the Toronto section of this book, we will now only briefly refer to this popular house. It is well known to the travelling public and is a centre for the dissemination of information regarding Georgian Bay hotels.



The Iroquois, Toronto.

The journey from Penetang to Parry Sound by the "City of Toronto" of the Northern Navigation Co. is one full of pleasant surprises and exquisite enjoyment. After leaving Penetang the route is through the unrivalled 10,000 Islands of the inside channel, forming shelter from all winds and rough seas.

Twelve miles out Muskosh River is passed, also Go Home River, three miles from the Muskosh, and Indian Harbor, ten miles from the same point.

Then the steamer threads its way through Moose Point Channel, forty miles from Penetang, and five miles further on arrives at the famous fishing resort,

SANS SOUCI, ON MOON RIVER,

which is the centre grounds on Georgian hotel, modern in and will accommodate 75 people. The rates are \$2.00 per day, \$10.00 to \$12.00 per week. The Sans Souci is built on an island of the same name at the mouth of the Moon River, from Muskoka which, with the Muskosh River, the empty into Georgian Bay. There is a store in connection with the hotel with a full line of groceries and camping requisites, also a post-office. The "City of Toronto" calls twice daily with mails and passengers. Daily trips are made up the Moon River and to adjacent fishing and hunting grounds by the new hotel excursion steamer. Black bass, lake trout, white fish, maskinonge and pickerel (doré) are very plentiful. In the fall deer, bear, partridge and duck abound in this region.



The Belvidere, Parry Sound.

of the best fishing Bay. It is a new appointments, etc., day, \$10.00 to \$12.00. Sans Souci is built on an name at the mouth of the great waterway Lakes, through south branch or Muskoka waters



The Sans Souci, Moon River.

Hay fever patients will find instant relief from a sojourn at Sans Souci.

About 15 miles further north is the

BELVIDERE, PARRY SOUND.

The scenery here and a stay at this comfortable hotel will well repay and fittingly terminate the 60-mile journey from Penetang.

The Belvidere is perched on an eminence 120 feet above the Georgian Bay and 590 feet above sea level. There is a magnificent view of alternating water and islands, and extending down the pretty South Channel, through which the steamer passes on its way up and down. The hotel, recently enlarged, will accommodate 200 guests. It is lighted by electricity, fitted with the best and latest plumbing and drainage system, the water, which is exceptionally pure, being drawn from the Parry Sound Waterworks. The house is well furnished throughout, vocal and instrumental concerts are held, and the dances in the ballroom and lawn tennis on the fine courts add to the enjoyment of the guests.

The Belvidere, like the Sans Souci, is a noted hay fever resort. Rates are \$2.00 per day, \$10.00 and upwards per week. Visitors may be assured of first-class fishing, hunting, sailing, bathing and driving. Complete information can be obtained from the proprietor of the Sans Souci and Belvidere, Mr. James K. Paisley, at the Iroquois Hotel, Toronto, up to June 25th, after that date at the Belvidere, Parry Sound, Ont.

ROSE POINT HOTEL AND HOTEL PITTSBURGH.

These two resorts under the proprietorship of Mr. W. F. Thomson, combine all the varied inducements for health and pleasure seeker, fisherman and hunter.

ROSE POINT HOTEL, PARRY SOUND.

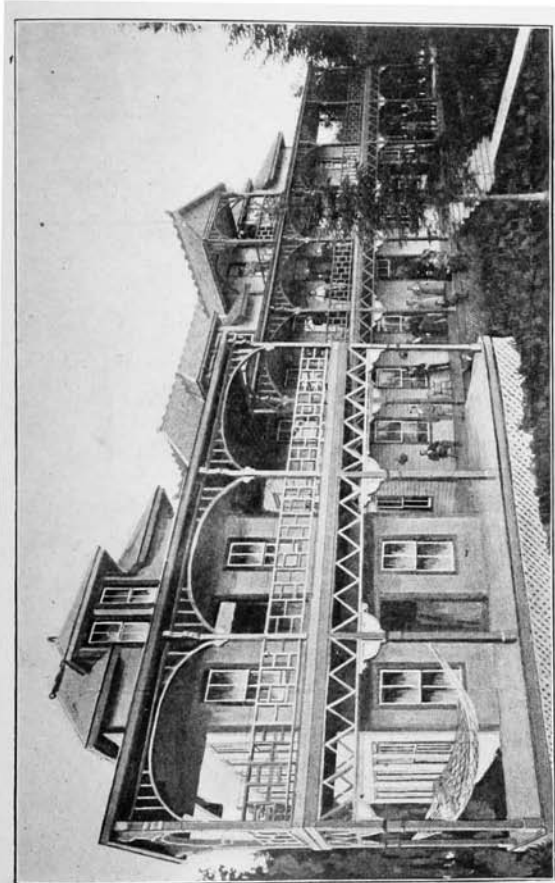
has already a large and increasing patronage. In point of situation it can challenge comparison with almost any known resort. It is very convenient of approach, being on the direct route of the City of Toronto from Penetang and close to the station of the Ottawa, Arnprior and Parry Sound Railway. It lies at the entrance to the South Channel of the Penetang-Parry Sound route, commanding a view of the channel to the south and Parry Sound to the north. In front is the beautiful bay and harbor formed by Parry Island, an Indian Reserve. Across the channel is a handsome bridge over which the trains of the Ottawa, Arnprior and Parry Sound Railway run to Depot Harbor and there receive from the immense elevators the grain cargoes of the large vessels from the Great Lakes for Montreal and the Atlantic ports. In the bay and channel and in neighboring fishing grounds are numerous black bass, maskinonge and other of the finny tribes, and the hotel steamer and a newly built fast launch are at the disposal of guests to convey them to the haunts of the angler and hunter. In the fall, bear, deer, grouse, wild duck and partridge are very plentiful. A good stock of boats and canoes is kept and guides can be hired at reasonable rates.

Rose Point Hotel is of picturesque architectural design and contains well furnished lofty rooms and modern improvements. It is surrounded by spacious verandahs and derives grateful shade from a grove of young shade trees. The table is supplied with abundance of fresh fish and every delicacy of the season. The rates at Rose Point, which will accommodate 125 guests, are \$2.00 per day or \$12.00 per week.

HOTEL PITTSBURGH, MOON RIVER.

Twenty-four miles south from Rose Point, amidst the best scenery on Georgian Bay, is the new Hotel Pittsburgh, under the same experienced management. It is built on a portion of Georgina Island in Moon River Bay and close to the junction of the Moon and Blackstone Rivers. This is the place for enthusiastic anglers. It is right in the best fishing grounds of Canada, such lakes as Clear, Pine, Healey's, Six Mile, Kappakog and others, famous for fish and game, being near by. The Moon River district is famous as a fishing and hunting centre and affords unrivalled opportunities for canoe and boat trips. The scenery in the vicinity is rugged and grand, no devastating fires having spoilt its natural beauty.

The new launch, accommodating 35 passengers, will run between Rose Point and Hotel Pittsburgh, and will also make connections at Sans Souci with the "City of Toronto" on her up and down trips from Penetang to Parry Sound. The same excellent accommodation and cuisine at this comfortable and well-furnished hotel is assured as is obtained at Rose Point. There is accommodation for 40 guests. Rates are \$2.00 per day, \$12 per week. Address Mr. W. F. Thomson, Rose Point Hotel, Parry Sound, for

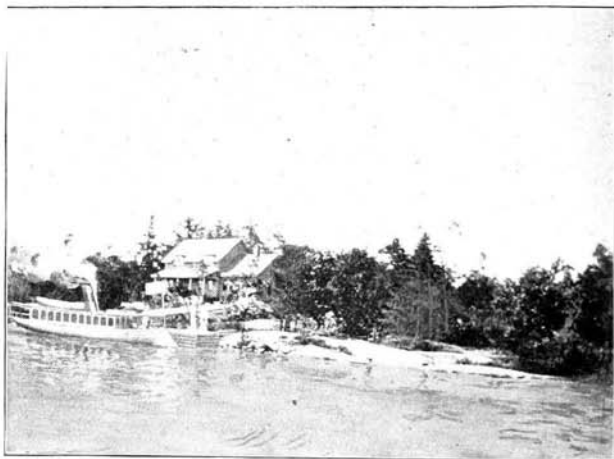


Rose Point Hotel, Parry Sound.

descriptive pamphlet and all information regarding fishing and hunting. The hotel is kept open during the fishing and hunting seasons.

ROUTES TO PARRY SOUND.

From New York, Boston, Portland, Montreal, Quebec and eastern points by Grand Trunk Railway or Canada Atlantic Railway: from Ottawa by Ottawa, Arnprior & Parry Sound division of the Canada Atlantic Railway direct: from Rochester, Buffalo, Detroit and southern and western States by Grand Trunk Railway, via Toronto or Hamilton to Penetang, thence steamer "City of Toronto;" from the north and north-west by North Shore route, via Sault Ste. Marie per Northern Navigation Co.'s steamers. The



Hotel Pittsburgh, Moon River. (See page 50.)

all-rail route from Toronto is by the G. T. R. northern division, connecting with Ottawa, Arnprior & Parry Sound Railway at Scotia Junction.

TORONTO, PARRY SOUND AND MUSKOKA LAKES TRIP.

From Toronto, by the G. T. R., to Penetang or Midland (about 100 miles); thence Northern Navigation Co.'s steamer "City of Toronto" to Rose Point (60 miles); thence O. A. & P. Sd Ry. to Smith's Crossing or Maple Lake Station (15 miles); thence stage coach to Port Cockburn, at head of Lake Joseph (7 miles), or Rosseau (12 miles); thence M. N. Co. to Gravenhurst (45 miles); thence G. T. R. back to Toronto (112 miles).

The hotels are: Penetang, The Penetanguishene; Moon River, The Sans Souci and Hotel Pittsburgh; Rose Point, Rose Point Hotel; Parry

Sound, Belvidere Hotel; Port Cockburn, Summit House; Rosseau, Montfeith House. Parry Sound is also reached via Scotia Junction on G. T. R.

GEORGIAN BAY AND LAKE SUPERIOR ROUTES.

The excursion trips through the 30,000 Islands of the Georgian Bay by the North Shore and Manitoulin Channel route to the Soo, the Island of Mackinac and Lake Superior, are the choicest and most beautiful of any on the great lakes. The route is by the G. T. R. to Collingwood, connections being made with the fine boats of the Northern Navigation Company.

GRAVENHURST.

There are many reasons why Gravenhurst is so frequented by pleasure and health seekers, numbers of whom stay for a long season, until late in the fall and even during the winter. It is a natural health resort and enjoys a world-wide reputation for the cures effected in cases of lung trouble, pulmonary diseases, hay fever, malaria, etc. Several people, after returning home cured, have come back to become permanent citizens and thereby banish forever any recurrence of their deep-seated maladies.

Gravenhurst is at the fountain-head of the enchanting Muskoka Lakes, at the base of navigation, residents and visitors enjoying the best facilities for excursions up and down the lakes. By taking the early morning boats, the crush of the crowded vessels which meet the Muskoka express is avoided and the scenery enjoyed at its best and without inconvenience.

The town is situated on high land between Gull and Muskoka Lakes. In Gull and Muskoka Lakes is the best fishing in this part of the country. There are numerous lakes and streams in the vicinity which afford good sport for the angler and in the surrounding woods bear, deer and partridge are numerous.

There are many pretty walks and drives in the neighborhood of the town and the scenery among the well wooded islands, deep bays and inlets of the south end of Lake Muskoka is very fine.

Every requisite of the best quality for campers, cottagers, and sportsmen can be obtained in the fine stores of Gravenhurst, which is the base of supplies for the lakes. At the end of this book is a directory of the leading merchants of the town. Messrs. Homer & Co., general merchants, are proprietors of the fine supply boat Constance, plying on Lakes Joseph and Rosseau, and Henry Ditchburn, the experienced boat builder, keeps a complete stock of boats in his commodious boat house at Muskoka wharf.

No stronger evidence could be furnished of the extreme healthfulness of the climate than the fact of this region having been chosen as the site of the Consumptive Sanitarium conducted under the auspices of the National Sanitarium Association, of which Mr. W. J. Gage of Toronto is treasurer.

This institution is on the lake front at some distance from the town but easy of access. The association numbers many of Canada's most prominent citizens among its members.

At Gravenhurst a site has been chosen for the erection of a fine hotel by The Ontario Summer Hotels Co. of Toronto as one of their circuit of northern summer hotels.

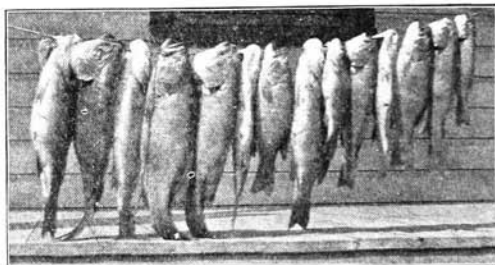
In the town is a fine park and picnic grounds, 75 acres in extent, with groves, ball grounds, bicycle track, etc.

The population of this pretty town is 2,000. It has comfortable hotels, private bank, handsome churches and the professions are well represented. It is 110 miles from Toronto on the Northern Division of the Grand Trunk.

MUSKOKA LAKES.

This enchanting region is now too well known to require any lengthy description here, while the subject has been more elaborately treated in a special work entitled, "Muskoka Through a Camera," which is for sale at newsdealers, at office of publication and throughout the Lakes, at 25 cents per copy.

The Muskoka Lakes region, or, as it is also known, the "Highlands of Ontario," comprises in all about 800 lakes and 400 islands of every conceivable



size and formation. To the average tourist the name is identified with the three larger bodies of water, viz.: Muskoka, at the foot of the chain and the largest, being 21 miles long; Rosseau next in order, 12 miles long; Joseph, the most northerly, although parallelling Rosseau, is 18 miles long. The width of these lakes is in places about six miles, narrowing down to mere channels barely wide enough for boat passage.

The distance from Toronto is 112 miles, from Hamilton 145 miles, on the Northern Division of the Grand Trunk Railway, trains running direct to Muskoka wharf and connecting there with the well appointed mail steamers of the Muskoka Navigation Company. From Toronto or Hamilton it is little more than a half day's journey to the extreme end of the lakes. The Muskoka Express is a very fast train, leaving about 11.30 a.m.

A complete new complement of parlor cars, of the latest design and costliest workmanship, will this year be a feature of this popular train.

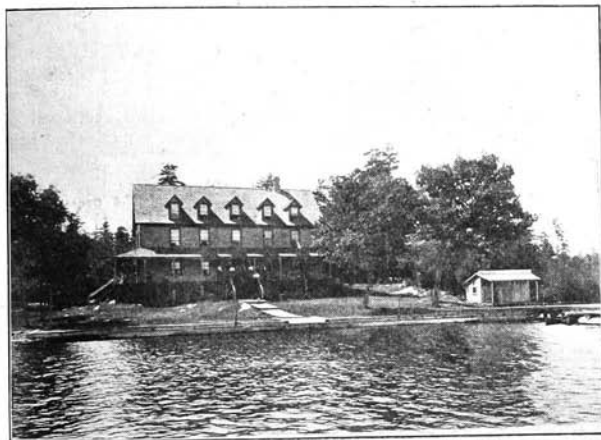
Muskoka is famous for good deer and bear hunting, partridge and duck shooting, and in many places for excellent fishing, salmon trout, black bass and pickerel (dore) being the most plentiful.

To sufferers from hay fever, asthma, lung troubles and pulmonary complaints, this whole region affords almost instant relief. The bracing

atmosphere, breathed at an elevation of about 1,000 feet above sea level, the beautiful soft water, and the resinous odor of vast pine forests, act as an unfailing tonic. The first port of call is BEAUMARIS, on Tondern Island, 14 miles from the starting point, or Muskoka wharf. There is a fine commodious house here. Connection is made at Beaumaris for the great fishing resort,

BALA.

Here will be noticed a great improvement in hotel accommodation. The Windsor House, formerly the Clifton House, has recently been purchased by Mr. Wm. McDivitt, the proprietor also of the Hotel Windsor at Gravenhurst. This gentleman, who is determined to make the Windsor of Bala one



Windsor House, Bala.

of the attractions of Muskoka Lakes, has greatly enlarged, beautified and renovated the house throughout, and the tourist will find the Windsor second to none. It is only about five minutes' walk from the celebrated Bala Falls, the fisherman's paradise, the realization of the dream of enthusiastic anglers. There is a daily mail and Toronto daily papers are placed on the table, keeping the pleasure seeker in touch with the outside world while he or she is enjoying the delights and restfulness of Nature's wilds. The rates at this house are \$1.50 to \$2.00 per day, \$7.00 to \$10.00 per week. The proprietor is Wm. McDivitt; manager, Wm. Gall. There is accommodation for 100 guests. In connection with this house is a first-class bar and billiard room.

Bala, twenty-one miles from Gravenhurst, is at the foot of Lake Muskoka, and is a great hay fever resort. It is on the Moon River, the outlet into the Georgian Bay of the waters of this lake region.

Bala is also headquarters for the "supply boat" "Gipsy," owned and operated by Mr. John Burgess. This boat calls at all islands, camps and points on Muskoka Lake, delivering supplies of every description. A good boat house with a full complement of boats and canoes is located at Bala, under the proprietorship of Mr. D. Burgess.

Leaving Beaumaris, the main line of travel is continued, until, entering through the lock, PORT CARLING is reached, at the end of Indian River, which terminates the Muskoka Lake part of the journey. There are two hotels here, the Stratton House, conducted by Mr. John Fraser, an exceedingly well appointed and scrupulously clean house, and one which we will describe more fully, viz.,

THE PORT CARLING HOUSE.

While in the lock at Port Carling a good view is obtained of this comfortable house and a closer inspection will convince the traveller that the proprietor, Mr. Joseph Ruddy, understands how to cater to the tourist. The house is not large, accommodating but 50 guests, but in all its appointments, in the cuisine, in the varied resources of the bar, there is evidence of experienced management and a determination and ability to minister to the best trade.

Port Carling House occupies a commanding position overlooking the lock and river, the many gaily painted cottages and the continuous procession of pleasure boats, launches and steamers. The house has been entirely renovated and remodelled and every comfort is assured to guests. Port Carling is the great excursion point of the lakes. From this place trips may be taken by the Muskoka Navigation Co.'s boats throughout the entire chain of lakes. Boats and canoes may be rented at the well stocked boat houses. In the neighborhood are many beautiful walks through the woods and along the country roads. In the Port are churches, a lending library and good stores. This is the headquarters of the supply boat "Mink" of Messrs. Hanna & Co., who keep a first-class store provided with everything that tourist and camper may require and of the best quality.

Leaving Port Carling, Lake Rosseau is soon entered. There are numbers of good houses on this lake all the way to ROSSEAU at the northern terminus. Lake Joseph is entered from Lake Rosseau at PORT SANDFIELD, a gay tourist centre. The best scenery in the region is enjoyed on the trip up this lake to PORT COCKBURN at the further end, which forms a link in the chain of the Parry Sound and Muskoka Lakes trips. A complete list of Muskoka hotels will be found in the hotel directory.

ACCOMMODATION.

Each succeeding year efforts are made to cope with the increasing tide of travel, but the capacity of all the houses on the lakes is taxed to the utmost. Many houses are this year being enlarged, new ones have been erected and modern improvements have been introduced in some of the leading houses. It is expected that next year there will be erected some really first-class modern hotels, with a capacity for about 300 guests. Efforts are now being made to this end by The Ontario Summer Hotels Company of Toronto and The Muskoka Tourist Hotel Company of Hamilton.

THE ONTARIO SUMMER HOTELS CO., LIMITED.

The object of this company, which has its headquarters in Toronto, is to establish a circuit of really first-class modern tourist hotels throughout Muskoka and the Highlands of Ontario, on the G. T. R. System, ensuring to summer travellers a uniform standard of excellence at a regular scale of rates.

A. C. A. MEET.

An event of more than usual import to the sojourner in Muskoka this year will be the meet of the members of the American Canoe Association. This will be held on Tobin's or Big Island in Lake Rosseau. The camp



Port Carling House, Port Carling.

site will be on the south-west corner of the island, on Mr. G. R. R. Cockburn's property, which has been rented for this purpose. The distance from Port Carling is about one and a half miles. There is a fine steamboat wharf where the Muskoka Navigation Co.'s boats call, a good bathing beach and pretty walks through the bush and plenty of good level open spaces. Messrs. W. Hanna & Co., of Port Carling, will build, equip and conduct the camp store which will be located near the wharf. Their supply boat "Mink" will call daily with ice and fresh provisions. This is sufficient guarantee that the commissariat department will be in good hands.

The meet will be held from August 3rd to 17th. Fares at one and one-third for the round trip have been secured for members of the A. C. A., via Grand Trunk to Muskoka Wharf. Canoes, war canoes and duffel carried free.

The A. C. A. camp site is one of the most convenient and most central

spots in Muskoka lakes. The A. C. A. was organized in 1880. The membership now numbers 2,000. The annual fee is \$1.00 and initiation fee \$1.00 for any canoeist over 18, in good standing. Mr. W. G. Mackendrick, 200 Eastern Ave., Toronto, is the Commodore.

Resuming the railway journey at Gravenhurst, the next tourist point touched at is BRACEBRIDGE, 12 miles further north. It has a population of 2,000 and is a busy little town, situated in romantic surroundings. From here the boats of the Muskoka Navigation Co. leave on the much patronized Bala trip down Muskoka River.

Still further north is a region which as a tourist resort competes with Muskoka lakes for beauty of natural scenery, this is known as

LAKE OF BAYS OR HUNTSVILLE LAKES. THE SPECKLED TROUT COUNTRY.

Huntsville, a village of 2,000, distant 145 miles from Toronto, is the centre for this district. It is on the main line, Northern Division of the G. T. R. The Muskoka express runs to Huntsville, meeting the steamers for the lake trip. The village is one of the highest points in Ontario and is prettily situated between lakes Vernon and Fairy.

The journey from Huntsville to Baysville or Dorset (two terminal points) by Captain Marsh's Huntsville and Lake of Bays line of boats is through beautiful scenery. The route is down Big East River, across Fairy Lake, then through a narrow winding channel a mile long, across Peninsula Lake, in which is the well known summer resort Deerhurst; at the end of this 8 mile stage of the journey is Lake View Hotel at the portage, which leads from Peninsula Lake to Lake of Bays. An electric railway is to be constructed across this mile portage, at the end of which the steamboat again takes up the thread of travel. Eight miles across Lake of Bays is Baysville which, with Dwight on the same lake and Dorset on Trading Lake, the farthest point, or 18 miles from Huntsville, are good fishing grounds.

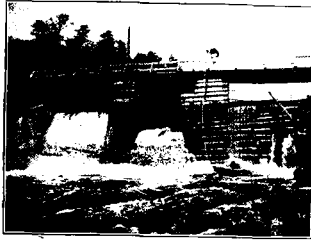
At Dorset, connection is made by portage with the famous speckled trout region, commencing at Hollow Lake. There is a boat service on these waters also, which comprise Hollow, Kimball's, Rock, Bear, Round, Fletcher and hundreds of streams and smaller trout ponds. Baysville is also noted for its speckled beauties, and salmon trout and white fish. The larger lakes on the main line of steamboat travel have been stocked with black bass.

In Huntsville are excellent stores, a private bank, two hospitals and very comfortable hotels, notably the Reid House near the boat landing.



MAGANETAWAN RIVER ROUTE.

One hundred and seventy miles north of Toronto, and about fifty-seven miles south of North Bay (the terminus of the Northern division of the Grand Trunk Railway), is Burk's Falls, the headquarters of the famous Maganetawan River and Almie Lake excursion route of the Muskoka Navigation Company, during the summer months, and also the starting point for numerous deer and bear hunting parties in the fall season. This



Burk's Falls.

is an ideal spot to spend a summer's vacation; the fishing is excellent, bass and pickerel are caught in great numbers in the neighborhood of the village, and the gamey trout is found in large quantities in the numerous streams.

The famous Algonquin Park of over 1,000,000 acres is but twelve miles to the east of this place.

There are few more comfortable houses for the tourist and hunter than the well-known "Burk House," presided over by Mr. D. F. Burk. The hotel is prettily situated, overlooking the Maganetawan River and Falls; the rooms are lofty and well furnished, and in the large and handsome dining room the traveller will find such provision for the inner man as will compare favorably with many more pretentious *meas* in towns and cities. This house is heated by a furnace and has electric bells, telephone communication with the village, and a shady verandah on the west side overlooking a well kept lawn. A bus meets all trains. Rates, \$1.50 to \$2.00 per day, \$8.00 to \$10.00 per week; accommodation for 75. See page 60.

NORTH BAY, the terminus of this line, is the connecting point for the C. P. R. main line to the west. It is the gateway to a splendid fishing and hunting district and has good hotels.

KAWARTHA LAKES.

These beautiful waters, the ancient home of the Mississauga Indians and the scene of the pioneer Champlain's early adventures are contained in the district north of Peterborough and Lindsay, between Lakefield and Cobocok, on the Midland Division of the Grand Trunk Railway. The name Kawartha signifies "pleasant lands" and "bright waters." The principal lakes comprised in this district, are Katchewanooka, Clear, Stony; then Burleigh Falls and Lock; Lovesick, Deer, Buckhorn, Sandy, Chemong, Pigeon, Sturgeon, Cameron and Balsam; in all a magnificent chain of lakes, 70 miles in extent, the finest canoe or steamboat trip in Canada, and forming a section of the Trent Valley Canal System, between Lake Ontario and Georgian Bay.

The chief railway point for this region is Peterborough, 90 miles from Toronto, 30 miles from Port Hope, 36 miles from Belleville.

Connection is made at Peterborough by G. T. R. for Lakefield, 9 miles distant, the terminus of one of the Midland divisions of the G. T. R. and the gateway to the Kawartha waters.



Burk House, Burk's Falls. (See page 59.)

Lakefield is a pretty village of nearly 1,500 inhabitants and has good stores, electric light and comfortable hotels, the principal house being the Queen's.

There is a very good steambot service from Lakefield by the "Sunbeam" which meets passengers on the evening train from Toronto,

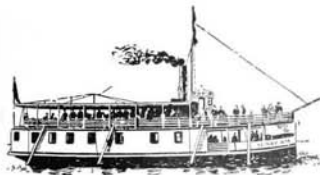
and Port Hope connecting with "North King" from Rochester; leaving Lakefield about 6 p.m. for Stony Lake and calling at Young's Point and



A Rochester Fishing Party's Catch of Bass, Young's Point.

all hotels, cottages and camping grounds up the lake. Returning from Stony Lake about 1.30 p.m., this boat connects with the 4.25 p.m. train at Lakefield for Toronto, also connects with the 9 a.m. train from Lakefield to Toronto and Port Hope, and to Rochester via North King.

The "Sunbeam" is a comfortable boat, and this season has been refitted, remodelled and made ready for the summer season. It is available for excursions between the regular trips. The owners, Messrs. White & Grylls, who run the boat, are experienced steamboat men.



SS. "Sunbeam," Stony Lake.

Brooks. There is accommodation for fifty. Rates, \$1.50 per day, \$7.00 per week. Young's Point is a good centre for fall hunting.

CHEMONG PARK.

This charming resort is situated on the shores of Chemong Lake, a beautiful sheet of water ten miles long by one in width, and about 500 feet above Lake Ontario.

Chemong Park Hotel is in the centre of a grove of young pines 270 acres in extent, and on a height of land 670 feet above Lake Ontario; no healthier spot could be found in Canada; the house is quite new, substantially built of red brick, with all modern conveniences; the hall and office are spacious,

the rooms lofty and well furnished, and the table is well supplied. In connection with the hotel is a good mineral spring of great medicinal properties.

The boating, bathing, fishing and hunting are excellent, bass and maskinonge abounding, and during the fall and winter gunning for rabbits, partridge and ducks is the favorite pastime. Fishing tackle, boats, etc., are kept for the use of guests. A daily steamer connects with adjacent lakes, and a private steamer is kept for guests and excursion parties. There is a daily mail, and telephone communication with Peterboro' and surrounding points.

Chenong is reached by bus and stage, which run twice daily from



Carleton House, Young's Point.

Peterboro', a distance of 6 miles: baggage should be checked to Peterboro' station. Mr. George H. Brown, the proprietor of this charming resort, gives every attention to the accommodation and transferring of guests and baggage. The post office address is Bridgenorth, Ont., connection being made between this place and the hotel by a floating bridge across the lake. The Chenong Park Hotel accommodates 70 people: rates are \$1.50, \$2.00 per day, \$8.00 to \$10.00 per week. See cut on opposite page.

THE GREAT LAKES: HURON, ERIE, ONTARIO.

Many of Ontario's best-known and most favored resorts are on the shores of these inland seas, reached by Grand Trunk Railway.

LAKE HURON. On the eastern borders of Lake Huron, so popular on account of the exposure to the bracing north-west breezes sweeping

over the great water stretches is situated the pretty town of Goderich, 125 feet above the lake level. It is distant from Buffalo 100 miles; Detroit, 171; Port Huron, 130; Toronto, 134, by G. T. R.; Windsor, Detroit and Port Huron, 60 miles by steamer. Kincardine, 174 miles and Southampton and Port Elgin, 150 miles from Toronto, are also worthy of a visit.

LAKE ERIE.—On the north shore of Lake Erie are several charming resorts. Port Dover, Port Burwell (via Tilsonburg), and Port Stanley on the G. T. R., between Buffalo and Detroit, are easy of access from Toronto and all parts of the United States. Walkerville on this line, and near Windsor and Detroit, is the connecting point for the fine Mettawas



Chemong Park Hotel. See page 61.

Hotel of Kingsville, by the Lake Erie and Detroit R. R. From Detroit to Sarnia is but a short trip, and the attractions of Sarnia have great claims on the tourist—fine hotels, parks, and adjacent resorts, and the great St. Clair Tunnel, the largest river tunnel in the world, being over two and one-fifth miles long.

LAKE ONTARIO.—On the north shore of Lake Ontario, west of Toronto, are Oakville, Burlington and Hamilton; across the Lake are Grimsby, St. Catharines and Niagara; east of Toronto, by G. T. R. main line, are Whitby, 30 miles from Toronto; Oshawa, 35; Port Hope, 63; Cobourg, 70; Trenton, 101. Connection is made at this town by Central Ontario Railway for the far-famed resorts of Prince Edward County, notably Consecon, Wellington, West Point and Picton, near the two last being the wonderful Sand Banks.

Continuing the journey east from Trenton, we come to the city of Belleville, 113 miles from Toronto, a picturesque city; Deseronto, 135; the historic city of Kingston, 163, and Gananoque, 182, connection at both places for the Thousand Island excursion trips; Mallorytown, 195; Brock-

ville, 208; Prescott, 220, etc.; connection at the two last named places with C. P. R. for Ottawa.

FORESTERS' ISLAND PARK.

The Bay of Quinte is one of Nature's "beauty spots." It would be difficult to find anywhere more varied or charming combinations of water, land and sky than are presented for the enjoyment of those who make the trip by boat from the Murray Canal to the "Gap." Centrally located in this rare aggregation of natural loveliness is an island gem lying opposite the town of Deseronto and about midway between the Hastings and Prince Edward shores, owned by Dr. Oronhyatekha, Supreme Chief Ranger of the Independent Order of Foresters. A marvelous transformation has taken place in the island during the past year. What the traveller now beholds as he sails by is first a handsome villa in which the doctor and his family spend the summer, known as "The Wigwam," and a little to the north an inviting



"The Wigwam," Foresters' Island Park.

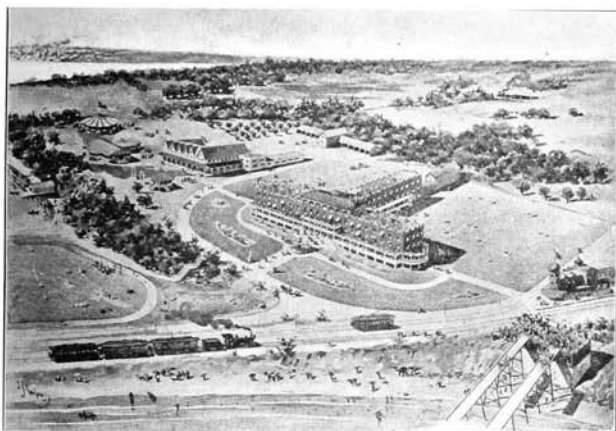
pavilion with capacious dining and refreshment rooms attached, a magnificent music hall, a band stand, and several neat cottages occupied by people who appreciate the invigorating qualities of Quinte's ozone, as well as the restfulness of its beautiful scenery. Other improvements there are, and more to follow, making the Park one of the most delightful, as it is one of the most healthful, resorts for rest and recreation to be found in Canada. The Park has the great advantage of being easily accessible. It is only a ten-minute's row to Deseronto, the terminus of the Bay of Quinte Railway, which connects with all trains on the Grand Trunk Railway, while all the Bay steamers, as well as those of the R. & O. N. Co. mail boats between Montreal and Toronto pass daily, and either call at the Park or at Deseronto.

The accompanying view of "The Wigwam" and its surroundings was taken by our artist on the occasion of its dedication to the Independent Order of Foresters. Persons desirous of securing cottages for the summer should correspond with Dr. Oronhyatekha, Toronto.

HOTEL BRANT, BURLINGTON.

While it has frequently been urged that the great necessity of our summer resorts is the erection of new hotels, modern in design and equipment and with large guest capacity, it has remained for the proprietors of the Hotel Brant to take the initiative in this matter and to be the first to complete such a building.

Burlington is 9 miles from Hamilton on the north shore of Lake Ontario. The Hotel Brant is built on the site of the old house of Chief Brant of the Six Nation Indians, a portion of the house, 100 years old, still remaining. On the hotel property can still be seen some of the Indian mounds and burial grounds.



Hotel Brant, Burlington. Showing Burlington Beach and Lake Ontario.

The hotel, which cost \$100,000, is a handsome red brick 4 story structure T shaped in design, permitting a view from every window, of the lake, Burlington Bay and surrounding scenery: in fact every room in the house is flooded with light. Hotel Brant is constructed on the most modern principles of summer hotel building. It contains 30 bathrooms connecting with rooms en suite, besides ample public baths and lavatories on each floor. The dining-rooms for adults, children and servants are fitted in antique oak and the whole interior is finished in hardwood. The cuisine is first-class. The building is supplied with electric elevators, heated with hot water and hot air, electric lighted and handsomely furnished: there are wide verandahs and balconies at front and sides and a fine roof garden, where high-class vaudeville entertainments will be held every evening. In the well kept grounds, 60 acres in extent, are golf links, tennis courts, bowling greens,

etc.; an orchestra of 12 pieces will give free concerts in the grounds every afternoon and supply dance music in the spacious ball-room during the evenings. Private supper parties and entertainments can also be arranged for. There is a good livery on the grounds, and the surrounding roads, intersecting a rich fruit farming country, are splendid for wheeling and driving.

In the neighborhood, easy of access, speckled trout fishing can be enjoyed; boating and bathing facilities are excellent, either in the lake or bay.

Hotel Brant is reached direct without change of cars from New York, Boston, Albany, Buffalo, etc., by N. Y. C., Lehigh Valley and West Shore Railroads; from Chicago and the west by G. T. R.; from Toronto by G. T. R. or Hamilton Steamboat Co.; from Hamilton by G. T. R. or Hamilton Radial Railway. The lessees, Messrs. Wachenhusen & Boggs, are experienced in conducting prominent winter resorts of Florida. The hotel



S. S. "James Swift," Rideau Lakes Navigation Co.

will open about July 1st with accommodation for 250 guests. Rates \$2.50 and upwards per day, \$12.00 and upwards per week.

KINGSTON TO OTTAWA.

THROUGH THE RIDEAU LAKES BY RIDEAU LAKES NAVIGATION CO., LIMITED.

The journey through these beautiful waters is described by J. G. Holland as "the finest trip on the continent." The boats operated by the above company are the splendid steamers "James Swift" and "Rideau Queen," which leave Kingston on Mondays and Thursdays at 7 a.m., Tuesdays and Fridays at 1 p.m. Leave Ottawa Mondays and Thursdays at 3 p.m. These steamers are electric lighted, steam heated, ventilated by steam fans, and are equipped with all modern conveniences. Connection is made at Kingston with I. O. S. Steamboat Co., whose boats connect with N. Y. C. and H. R. Ry., at Clayton and Cape Vincent, N. Y. Connection is also made with the R. & O. N. Co., L. O. S. B. Co., G. T. R., and K. P. Ry.

and at Ottawa with the Ottawa River Nav. Co.'s steamers, Ottawa Forwarding Co., C. P. R., C. A. R., O. & N. Y. Ry., and O. A. & Parry Sd. Ry.

The "Rideau Queen" is entirely new, built expressly for passenger service, and in point of furnishings and finish is equal to any boat on fresh water.

The Rideau Lakes trip is one of the most enjoyable in Canada. The grand scenery for which these waters are noted is seen in daylight. Each year many expert American anglers visit this district for the bass fishing, which is about the best in Canadian inland waters. Salmon and Maskinonge are also plentiful. The Rideau Route only requires to be known to become one of the most popular on the continent. The scenery is varied and charming, one of the finest spots being the famous Jones' Falls. One of New York's celebrated magazine writers describes it as follows: "Jones' Falls is one of the most beautiful spots in Ontario. Those who have seen it and been in a position to compare it with other 'beauty spots' on the continent, state positively that while they may have witnessed its equal, certainly they never saw its superior, all points of interest taken into consideration. It is simply fairyland."

The season of the "James Swift" is from May 1st to Nov. 1st, "Rideau Queen" from June 1st, to Sept. 15th. Fare from Kingston to Ottawa is \$3.00. Return, \$5.00. Meads, 50c., and berths \$1.00 to \$5.00 extra.

Further information and descriptive guide book should be sought from D. Noonan, Managing Director, Kingston, Ont. James Swift is the President of the Company.

Ottawa and Neighborhood.

Of the many beautiful cities of the Continent of America, not one can boast of more beautiful scenery, statelier buildings, or more attractive hunting, fishing and pleasure resorts in the vicinity than the regal city of Ottawa, the capital of this fair Dominion of Canada.

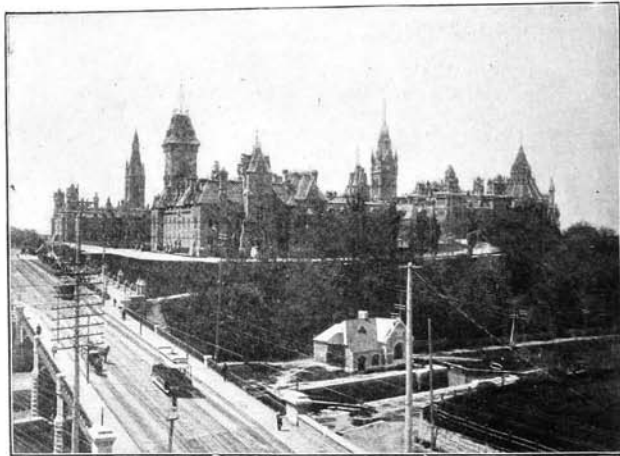
Ottawa is reached from Toronto by the C. P. R. direct (256 miles), or by G. T. R. to Brockville or Prescott, thence C. P. R.; from Montreal and east by Canada Atlantic Ry., C. P. R. or Ottawa River Navigation Co.; from Kingston (on G. T. R. or R. & O. Steamboat Line), by Rideau Lakes Navigation Co. It is also easily reached from Niagara Falls, Buffalo, 1,000 Islands, New York and Boston; and from Muskoka and Parry Sound by the Ottawa, Arnprior and Parry Sound Ry. (Canada Atlantic Ry.)

The city is beautifully situated on a lofty pinnacle at the junction of the Ottawa, Rideau and Gatineau Rivers. The population is about 45,000.

In Ottawa itself are many attractions, which alone make a visit profitable and pleasant. Among many objects of special interest are the Parliament Buildings, built of white stone, only equalled in beauty of architecture by those at Washington; Rockcliffe Park; Chaudiere Falls; Rideau River and Falls; Rideau Hall, the residence of the Governor-General; Geological Museum; Fish Hatchery; National Art Gallery and, not least, the gigantic lumber mills and slides. Of the vast accumulation

of forest wealth the last disastrous fire, alas, has destroyed a considerable quantity. There will however be good results, leading to the erection of more substantial buildings and the taking of greater precautions.

Besides the city's attractions there are many beautiful resorts easily reached by street car, railway or steamboat, such as Aylmer, with its fine new Hotel Victoria, a popular summer resort described later; Chelsea; Britannia and the numerous fishing, hunting and pleasure resorts on the Ottawa and Gatineau Ry., Canada Atlantic Ry., in the Rideau River and Lake district, reached by steamers "James Swift" and "Rideau Queen" of the Rideau Lakes Navigation Co., and many others. No one should miss



Government Buildings, Ottawa.

taking in the view from the tower of the Parliament Buildings, from which is unfolded a grand panorama of the lake, river and mountain ranges, seldom equalled.

Ottawa is one of the most prosperous cities in the Dominion; it can boast of most modern stores, beautiful residences and public buildings, excellent electric car service, and hotels equal to the best. The leading hotel is

THE RUSSELL.

The name of The Russell is sufficient guarantee for all that is excellent in style and appointments; the *ne plus ultra* of hoteldom. It ranks with the premier hotels of this continent, and in its interior arrangements, decorations, *en suite* and general appurtenances, justifies the qualification "palatial." Needless to say, it is the recognized headquarters of leading statesmen, prominent travellers and tourists and members of Parliament.

As will be seen by the accompanying illustration, The Russell is a most imposing structure; it is conveniently situated close to the Parliament and Departmental Buildings, and on the principal street railway lines. This hotel has lately been entirely remodelled and refitted throughout at considerable expense. There is accommodation for 450 guests. Rates \$2.50 to \$4.00 per day. Mr. F. X. St. Jacques, one of the most popular and experienced hotel men in Canada, is the proprietor. At the back of the hotel is the Russell Theatre, lately erected, and one of the prettiest in



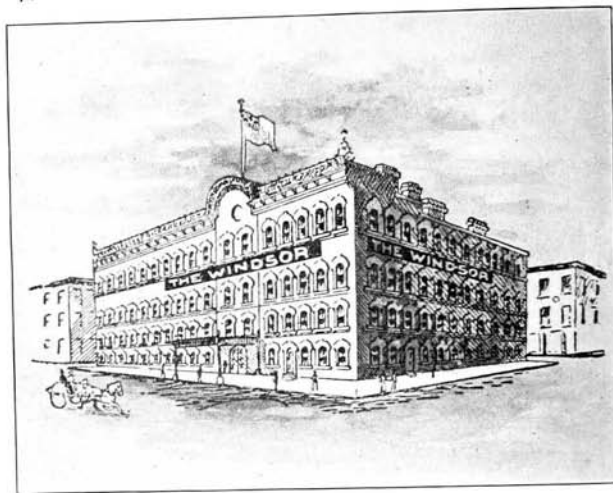
The Russell House, Ottawa.

the Dominion. There is an entrance from The Russell House to this place of amusement.

THE WINDSOR.

In the Windsor the tourist and traveller will find an exceedingly comfortable, modern and well appointed hotel; first-class in every detail. The building faces on three leading thoroughfares—Queen, Metcalfe and Sparks Streets. It is only one block from the Parliament Buildings and convenient to the principal stores, business houses, theatres, steamboat landing and railway stations, and is on the main electric car lines.

The Windsor has been remodelled and re-furnished, and is under new management. The rooms are large, airy, and arranged *en suite*, for convenience of families and parties. Owing to the increasing demand for accommodation, an addition of 25 rooms was made last autumn. The dining room has also been enlarged and greatly improved. The *cuisine* is excellent. Under the careful management of Mr. S. Daniels, the Windsor



The Windsor, Ottawa.

has taken a foremost place and is largely patronized by members of Parliament, tourists, etc. The rates are \$2.00 to \$2.50 per day; there is accommodation for 230 guests.

THE GRAND UNION.

Another of Ottawa's first-class hotels is located at the corner of Elgin and Queen Streets. Street cars pass by the door to all parts of the city and depots. The Grand Union is a handsome building, opposite the City Hall and Russell Theatre, and close to all public buildings: it is one of the best appointed commercial hotels in the city, and is largely patronized by members of Parliament, tourists and the travelling public. It is fitted throughout with steam heating, electric lights and speaking tubes. An addition has lately been made of twenty rooms, affording accommodation altogether for 330 guests. The building has also been thoroughly equipped with new fire escapes. The steam heating has been renovated, wash-rooms and lavatories on each floor thoroughly re-constructed, and the dining room, office, etc., re-decorated. There is a first-class new elevator. The rates are \$2.00 per day, with special rates for permanent guests. The proprietor is Mr. H. Alexander, an enthusiastic horseman and owner of some fine thoroughbred stock.

We have spoken of Ottawa and its attractions, its fine hotels, etc., also of some of the beautiful adjacent resorts. One that deserves special mention is the

HOTEL VICTORIA, AYLMEER, QUE.

In the Village of Aylmer the visitor will be struck by the sudden transition from the modern, bustling life of Ottawa to the old world peace and calm and quaint manners, customs and appearances of the genuine *habitant* and his environments. How long it will retain these charming



Hotel Victoria, Aylmer, P.Q.

characteristics, with the close proximity of such a modern, up-to-date, fashionable resort as the Hotel Victoria, it would be hard to say, but in the meantime the contrast exists, and is very enjoyable.

The Hull Electric Railway conveys passengers through Aylmer, and



The Grand Union, Ottawa.

surrounding charming scenery, to the Hotel Victoria, nine miles, or one-half hour's journey from Ottawa, connection being made with the Ottawa Electric Railway at Hull. The porters of the hotel meet all trains at Ottawa.

The building itself is of handsome architectural design and of ornate interior construction. It contains elegantly furnished bedrooms, single and *en suite*, the most modern sanitary arrangements, steam heating, electric light throughout, electric bells, passenger elevators, etc. Ample provision has been made for indoor amusements, in the fine bowling alley, billiard room and spacious ball room, where dancing is enjoyed to the accompaniment of a good orchestra. Bicycling, bathing, rowing, sailing, tennis, water tobogganing, fishing, etc., are among the outdoor amusements.

The Hotel Victoria is situated in the centre of a fine park of thirty acres, on the shore of Lake Deschenes, a widening of the Ottawa River twenty-eight miles by one to four in extent. Mr. F. X. St. Jacques, of The Russell, of Ottawa, is also proprietor of this fine hostelry. The rates are \$2.00 per day, \$10.00 per week and upwards.

MONTREAL.

The city of Montreal, the commercial metropolis of Canada, is built on an island, bearing the same name, and formed by the confluence of two of Canada's noblest streams; the Ottawa washing the north shore, and the St. Lawrence the south shore. This island is thirty miles long by ten wide.

The city itself is built for three miles along the river front, the numerous quays and wharves presenting a bustling and interesting scene. It extends north to the foot of the mountain where are located the principal residential streets. The views and drives to be enjoyed at the summit of the mountain, 700 feet above the level of the river, are exceptionally fine and are enjoyed alike by resident and visitor. Montreal is notably a beautiful city during the summer season.

There is much to impress the traveller when approaching the city, either by river or rail. One of the most striking objects observed from the deck of one of the R. & O. Co.'s fine steamers is the Grand Trunk new double track steel bridge, called the Victoria Jubilee Bridge, which has replaced the old tubular structure. This bridge spans the St. Lawrence connecting the island of Montreal with the south shore and forming the link to Portland and Quebec by Grand Trunk Railway. In addition to double tracks this bridge has carriage ways and foot walks on each side of the main trusses.

A notable feature of the appearance of the city as viewed from the river, is the many glittering spires and towers of churches and cathedrals. Chief among these religious edifices are the St. James Cathedral, 240 feet in height; and Notre Dame Church, with lofty towers rising to a height of 200 feet.

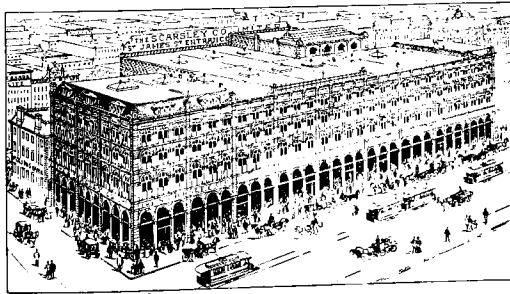
Among numerous interesting points near Montreal are St. Helen's Island and Mountain Park on Mount Royal, one of the finest parks anywhere to be seen and easily reached by Incline Railway. Lachine; Beloeil

Mountain; St. Lambert; St. Anne's; Longueuil; LaPrairie, and many other places in the vicinity of Montreal are popular summer resorts.

Montreal contains massive warehouses, palatial hotels, fine educational institutions, thoroughly equipped; brilliant, modern stores, and an excellent Electric Street Railway system.

Speaking of stores, there are many that will tempt the tourist and sight-seer to part with a portion of their loose spending money, which finds its way into the fine jewellers, furriers and mammoth retail emporiums. An institution which is well worth a visit and tour of inspection is "Carsley's." This fine store occupies a whole block in the centre of the business section of the city, bounded by St. James, Notre Dame, St. John and St. Peter Streets.

To gain an insight into the methods employed in conducting such a large retail business as that of the S. Carsley Company, Limited, and thereby to form some idea of the perfection attained in Canada by this class of business, will in itself be a revelation to strangers. The immense assortment of articles of every description, Indian curios, views, souvenirs, silverware, books, etc., etc., affords an excellent opportunity for the tourist to replenish their stock of travelling necessities. The building is a sort of modern landmark, as it is situated close to many places of interest which should be included in a tour through Montreal, such as Notre Dame Church, Place D'Armes, Maisonneuve Monument, Victoria Square, Court House, Bank of Montreal, Bank of B. N. A., Post Office and many others. The store, with its late additions, has frontages on St. James, Notre Dame, and St. Peter Streets. It is easy of access from all parts of the city by street cars.



The S. Carsley Co. Departmental Store, Montreal.

As may be supposed, Montreal is a great railway and shipping centre. It is the entrépot for ocean travel, the link between America's great lakes and foreign commerce. Canada's two great railways, the G.T.R. and C.P.R., have their Head Offices here, the former Company having under course of construction a splendid new building, which will afford much needed modern and central accommodation.

A. ROSS McINNES & CO.,



Members Toronto Board of Trade,
Toronto Mining
and Industrial Exchange.

MINING BROKERS.

CABLE ADDRESS—"Arm."
CODES—Moreing & Neal, Clough's,
Bedford McNeil.



OFFICES:

ROOMS 3 and 4 No. 9 TORONTO STREET,
TORONTO.

No. 3 MERRILL BLOCK,
DETROIT.

No. 35 BROADWAY,
NEW YORK.

LIST OF SOME LEADING SUMMER HOTELS IN ONTARIO, Etc.

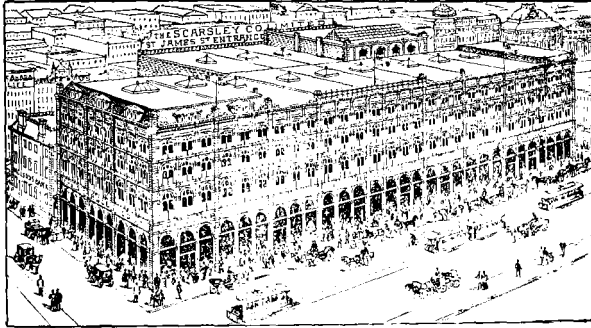
PLACE, HOTEL, AND NAME OF PROPRIETOR OR MANAGER.	AV. NO.	RATES.	
		PER DAY.	PER WEEK.
LAKE ONTARIO.—West and South of Toronto.			
Long Branch—Nine miles west of Toronto.			
Long Branch Hotel..... H. A. Burrows		\$1.50 to 2.00	\$8.00 to 12.00
Lorne Park—Fifteen miles west of Toronto.			
Hotel Louise..... Lucas & Co.		1.00 to 1.50	6.00 to 9.00
also Lucas House (Temp.), Toronto.			
Grimsby Park			
Lake View House.....		1.50 to 2.00	Rates on
Park House..... J. D. Strawn		1.00 to 1.50	Application.
Burlington.			
Hotel Brant..... Wachenhusen & Boggs	250	2.50 and up.	12.00 and up.
Hamilton.			
Hotel Royal..... E. A. Patterson	200	2.50 to 4.00
The Waldorf..... R. M. Gilkison	200	2.00	10.00
St. Nicholas..... John Clark	100	1.50 to 2.00	16.50
St. Catharines.			Rates on
Welland House..... Malcolmson Bros.	90	1.50 to 2.00	Application.
Niagara-on-the-Lake.			
Queen's Royal Hotel..... Henry Winnett	250	2.50 to 4.00
Hotel Chautauqua..... The Manager	75	1.50 to 2.50	7.00 to 12.00
Niagara Falls.			
Windsor House..... Jas. Keating	50	2.00	10.00 to 12.00
Park Side Inn..... Mrs. McRoy	50	1.50 to 2.00
Hotel Lafayette..... Henry Williams	75	2.00 to 2.50	10.00 to 12.00
Rosli.....			Rates on
			Application.
MIDLAND DISTRICT.			
KAWARTHA LAKES.			
Lindsay.			
Benson House..... Jno. Wardrobe	75	1.50 to 2.00	10.00
Bobcaygeon.			
Rockland House..... H. Thompson	100	1.50 to 2.00	Special.
Peterborough.			
Oriental..... Geo. N. Graham	100	1.50 to 2.00	8.00 to 10.00
Buckhorn (Hall's Bridge P.O.)			
Buckhorn Hotel..... T. Eastwood		1.00 to 1.50
Chemong.			
Chemong Park Hotel..... G. H. Brown	70	1.50 to 2.00	7.00 to 9.00
Burleigh Falls.			
Burleigh Falls Inn..... Geo. F. Gretton	25	1.50	7.00
Mount Julian P.O.			
Viamede..... Mrs. W. M. Graham	75	1.50 to 2.00	7.00 to 10.00
Lakefield.			
Queen's Hotel..... K. J. Munro	25	1.00 to 1.50	6.00 to 8.00
Craig Hotel..... John Craig	25	1.00 to 1.50	Special.
Young's Point.			
Carleton House..... W. E. Brooks	50	1.50	7.00
Rice Lake.			
Jubilee Point Hotel..... H. Calcutt	25	1.00	5.00
Hastings.			
Clarendon Hotel..... A. B. Spellman	50	1.00 to 2.00	Special.
LAKE ONTARIO, ST. LAWRENCE, AND			
RESORTS EAST OF TORONTO.			
Cobourg.			
Arlington..... Mrs. Alexander	200	2.50	10.00 to 12.00
Cedarmere..... Thos. Retallack		2.50	10.00 to 12.00
Columbian..... Dorland Smith		2.50	10.00 to 12.00
Balmoral..... P. J. Lichtborn		1.50
Dunham House..... M. E. Williams	40	1.50	8.00 to 10.00
Trenton—(Connection for P.E. Co.)			
Gilbert House..... T. H. Blocker	25	1.50	6.00
Pieton, P.E. Co.			
Hotel Globe..... W. H. Vansdine	75	1.00 to 1.50	5.00 to 7.00
West Point, S.R., P.E. Co., Hyatt & McDonald			6.00
Cottages.....			1.50 to 3.00
Wellington, P.E. Co.			
Wellman House..... Geo. A. Wellman	25	1.00	5.00 to 7.00
Consecon, P.E. Co.			
Globe Hotel..... C. R. Dade	20	1.50 to 2.00	Special.
Belleville.			
Hotel Quinte..... J. V. Jenkins	100	2.00 to 3.00
Massassaga Park Hotel.....	100	1.50	7.00 to 9.00

SUMMER HOTELS IN ONTARIO, ETC.—Continued.

PLACE, HOTEL, AND NAME OF PROPRIETOR OR MANAGER.	A.M.	RATES.	
		PER DAY.	PER WEEK.
Kingston.			
Hotel Frontenac.....Thomas Crate	150	\$2.00 to 3.00	\$10.00 to 15.00
British-American.....	150	2.00 to 3.00	10.00 to 15.00
Brookville—(Connection for Charleston and Rideau Lakes.)			
St. Lawrence Hall.....Amos Robinson	200	2.00	10.00
Revere House.....J. C. Bann	75	2.00 to 2.50
Athens—(Via Brockville).			Rates on Application.
Cedar Park Hotel.....W. H. Levett
Prescott.			
Daniels.....L. H. Daniels	75	2.00 to 3.00
Bradley Hotel.....D. P. Horan	50	1.50 to 2.00	8.00 to 10.00
Ottawa.			
The Russell.....F. X. St. Jacques	450	2.50 to 4.00
Grand Union.....H. Alexander	350	2.00
Windsor.....S. Daniels	200	2.00 to 2.50
The Gilmour.....Peter McVeigh	200	2.00 to 2.50	10.00 to 15.00
Hotel Cecil.....C. H. Genslinger	2.00 to 4.00
Bodega Hotel.....W. R. Quade	30	{ 1.00 Europ'n 2.00 Amer'n	Special.
Aylmer, P. Q.			
Hotel Victoria.....F. X. St. Jacques	200	2.00	10.00
Caledonia Springs.			
Caledonia Springs Hotel.....	250	2.50	10.00 and up.
Grand Hotel Co., Limited, Cal. Springs, and 29 Carleton Chambers, Ottawa			
Montreal, P. Q.			
The Windsor.....W. S. Weldon	500	3.50 to 5.00
St. Lawrence Hall.....H. Hogan	400	2.50 to 4.00
The Queen.....C. & N. Vallee	350	2.50 to 3.50
Turkish Bath.....Est. J. R. Alexander	200	2.00 to 2.50	10.00 to 15.00
St. James.....G. Forest	100	1.50 to 2.00	8.00 to 10.00
Balmoral.....Arch. Welsh	400	{ single rooms 2.00 to 3.00	En suite 3.00 to 4.00
Hotel Richelieu.....J. B. Durocher & Co.	200	{ 1.00 & upw'ds 2.00 to 3.00	Europ'n plan. Americ'n plan.
The Carlslake.....Geo. Carlslake	50	1.00	Europ'n plan.
Grand Union.....Geo. Fuller	1.50 to 2.00
LAKE ERIE.			
Port Dover.			
Commercial.....D. Wadde	Rates on Application.
Dominion.....J. B. Fick	Rates on Application.
Port Stanley.			
Fraser House.....D. Fraser	Rates on Application.
King'sville.			
The Mettawas.....J. F. Antisdel & Sons	150	4.00 to 5.00	Special.
ST. CLAIR RIVER.			
Sarnia.			
Hotel Vendome.....Ryder & Hand	1.50 to 2.00
Belchamber.....Jno. Buckley	Special.
Arlington.....Mrs. S. M. Alexander	1.50 to 2.00
Grand View.....D. Wees	Special.
Conjunct.			
Hotel Bolard.....A. A. Bolard	1.50
LAKE HURON.			
Goderich.			
Bedford Hotel.....Jonathan Miller	150	1.50 to 2.00	10.00 to 12.00
British Exchange.....Thomas Tith	45	1.00	5.00
Huron Hotel.....E. R. Swartz	25	1.00	5.00
International Hotel.....Wm. Craig	20	1.00	5.00
Park Hotel (family).....Mrs. Shannon	50	1.50	7.00 to 10.00
Munsee Park (& cottages) D. F. Handink	30	5.00 to 8.00
Also number of summer cottages to rent.			
Southampton.			
Commercial Hotel.....D. Teahan	Special.
Lakeside Park.....E. C. Talbot	1.00	Special.
Hotel (and cottages)			
Port Elgin.			
Goble's Grove (cottages).....Jas. Hendry

The Biggest Store in Canada's Biggest City.

The **S. CARSLY CO.,** Limited.



DEPARTMENTAL STORE. SHOPPER'S DIRECTORY.

BASEMENT.

Boots and Shoes.
Glass and China.
Baskets.

Groceries.
Tinware.
Toys.

Sporting Goods.
Woodenware.
Lamps.

GROUND FLOOR.

Indian Curios.
Views of Montreal.
Books, Stationery.
Trimmings.
Dress Goods.
Linsens and Cottons.
Ribbons.
Handkerchiefs.
House Furnishings.

Umbrellas.
Ladies' Gloves.
Silks.
Men's Furnishings.
Furs and Wools.
Hostery.
Men's Hats.
Travelling Rugs.
Souvenir Spoons.

Prints and Corsets.
Flannels.
Silverware.
Laces.
Embroideries.
Underwear.
Cutlery.
Notions.
Sheet Music.

FIRST FLOOR.

Jackets and Capes.
Waterproofs.
Millinery.
Pictures.

Shirtwaists.
Baby Linen.
Children's Mantles.
Costumes.

Bicycles.
Whitewear.
Ladies' Wrappers.
Flowers, Feathers.

SECOND FLOOR.

Carpets.
Oil Cloths.
Boys' Clothing.

Wall Paper.
Men's Clothing.
Turkish Rugs.

Curtains,
Men's Waterproof.
Tailoring Branch.

THIRD FLOOR.

Bedroom Suites.
Rocking Chairs.

Dining Room Suites.
Oriental Furniture.

Hall Stands.
Iron Bedsteads.

SPACIOUS AND ELEGANT REFRESHMENT ROOMS.

THE S. CARSLY CO., LIMITED,
MONTREAL.

1765 to 1783 Notre Dame St.
105 to 113 St. Peter St.
184 to 194 St. James St.

Muskoka Lakes, THE HIGHLANDS OF ONTARIO

— CANADA'S GREAT PLEASURE AND HEALTH RESORT.
— UNRIVALLED SCENERY, FISHING, HUNTING, ETC.



REACHED DIRECT FROM ALL POINTS BY
GRAND TRUNK RAILWAY AND MUSKOKA NAVIGATION COMPANY.
FAST THROUGH TRAINS AND SPLENDID STEAMBOAT SERVICE IN CONNECTION.
FULL PARTICULARS FROM MUSKOKA NAVIGATION CO., TORONTO, OR ANY G.T.R. AGENT.
N.B.—Baggage should be checked direct to Muskoka Wharf.

THE....
Geo. E. Tuckett & Son Co.,
Limited.

Manufacturers of the following well-known brands:

Plug Tobaccos.

T. & B. Myrtle Navy.
The Lily.

Cut Tobaccos.

T. & B. Myrtle Cut.
Orinoco.
The Cherub.

Chewing Tobaccos.

Mahogany and Black.

Cigars....

Maceo.
Cherub.
Marguerite,
T. & B.

**TUCKETT'S
MARGUERITE
CIGARS.**

Cigarettes.

Tony.
Cherub.
T. & B.

*They are the best
and are for sale everywhere.*

List of Some Leading Summer Hotels,

79

SUMMER HOTELS IN ONTARIO, Etc.—Continued.

PLACE, HOTEL, AND NAME OF PROPRIETOR OR MANAGER.	ACCOMMODATIONS	RATES.	
		PER DAY.	PER WEEK.
WEST OF TORONTO.			
Brantford.			
Kerby House..... Robt. Sibbitt	100	\$2.00 to 2.50	\$10.00 to 12.00
Stratford.			
Windsor..... E. Hodgins			Special.
Albion..... L. Walper		1.50	
Preston Mineral Springs.			
Hotel del Monte..... Robt. Wabler		1.50 to 2.00	8.00, 10.00, 12.00
Mineral Springs Hotel..... W. F. Kress			Special.
NORTHERN DISTRICT.			
LAKE SIMCOE.			
Barrie.			
Queen's Hotel..... D. W. Leroy	100	\$1.50 to 2.00	\$10.00
Barrie Hotel..... A. W. McCarthy	60	1.50 to 2.00	10.00
Big Bay Point—Via Barrie.			
Peninsular Park Hotel..... The Manager		2.00	8.00 to 12.00
Monmouth Park, S. R..... Manager, or		1.50	8.00 to 10.00
W. Paul, 213 Board of Trade, Toronto	75		
Stouffville.			
Mansion House..... F. D. Miller	100	1.00	6.00
Jackson's Point—Sutton West P.O.			
Jackson's Point Hotel..... D. W. McDonald	25	1.00	
Lake View House..... A. B. Sanders	120	1.00 to 1.50	6.00 to 8.00
Pine Plaza..... A. M. & A. J. Lake	60	1.50	6.00 to 8.00
Poplar House..... Peter Grant	25	1.00	Special.
Lakeside (Beaumont Villa)..... C. F. Goodyear			Special.
Sutton West.			
Mansion House..... Jas. Sharpe	25	1.00 to 1.50	5.00 to 6.00
Queen's Hotel..... R. Sturbridge	20	1.00 to 1.50	5.00 to 6.00
Royal Hotel..... H. A. Sheppard	20	1.00 to 1.50	5.00 to 6.00
Plumstead (Winghouse)..... Albert Mossington	20	1.00	
Rotherwood..... Jas. Chalmers	10		4.00
Morton Park (Belhaven).			
Balmoral House (& cottages)..... Neil Morton	30		
Orillia. (bet. Lakes Simcoe and Couchiching.)			
Orillia House..... Jas. K. Hessey	50	1.50	8.00 to 10.00
Daly House..... F. J. Daly		1.00 to 1.50	5.00
And Private Boarding—Apply Sec. Board of Trade.			Rates on Application.
Strawberry Island—Hotel and Cottages.....			
GEORGIAN BAY.			
Owen Sound.			
Paterson House..... W. M. Matthews		1.50 to 2.00	
Seldin House..... F. J. Shipman		1.50	
Collingwood.			
Grand Central..... Thos. Collins		1.50 to 2.00	8.00 to 10.00
Globe Hotel..... John Rowland		1.50 to 2.00	8.00 to 10.00
Midland.			
Queen's..... John Hanley	50	1.50	Special.
Gladstone House..... J. W. Demorest	30	1.50	8.00
Honey Harbour.			
Victoria House..... N. N. Nickerson & Sons			Rates on Application.
Penetang.			
The Penetanguishene..... E. A. Patterson		2.00 & upwards.	10.00 upwards.
Canada House..... J. Cloutier	100	1.50 to 2.00	
Bay View Hotel..... John Doersam		1.00 to 1.50	
Moon River P.O.			
The Sans Souci..... Jas. K. Paisley	75	2.00	10.00 to 12.00
Hotel Pittsburgh..... W. F. Thomson	40	2.00	12.00
Parry Sound.			
The Belvidere..... Jas. K. Paisley	200	2.00	12.00 upwards.
Rose Point Hotel..... W. F. Thomson	125	2.00	12.00
MUSKOKA LAKES.			
LAKE MUSKOKA.			
Gravenhurst.			
Windsor..... Wm. McDivitt	75	1.50 to 2.00	7.00 to 10.00
Albion..... F. Wasley	50	1.00	7.00
Empress..... Sharpe & Chinn	40	1.00 to 1.50	7.00
The Annievale..... F. S. Hurlbut	50	1.00 to 1.50	5.00 to 8.00

SUMMER HOTELS IN ONTARIO, ETC.—Continued.

PLACE, HOTEL, AND NAME OF PROPRIETOR OR MANAGER.	ACCM.	RATES.	
		PER DAY.	PER WEEK.
Bracebridge, Muskoka River.			
British Lion.....	100	\$1.00 to 1.50	\$6 00 to 8.00
Queen's.....J. R. Higgins	150	1.50	Special.
Beaumaris.			
Beaumaris Hotel.....Ed. Prowse;	200	1.50 to 2.00	8.00 to 12.00
Milford Bay.			
Milford Bay House.....R. Stroud	80	1.25	7.00 upwards.
Bala.			
Bala Falls Hotel.....T. Currie	100	1.25	7.00
Windsor House.....Wm. McDavitt	100	1.50 to 2.00	7.00 to 10.00
Camp Sutton P.O.....E. B. Sutton	30	1.00	5.00 to 7.00
Whitesides P.O.			
Acton Island Farm.....S. J. White	15	6.00
Mortimer's Point.			
Wingberry House.....Wm. Mortimer	40	1.00	6.00
Port Carling, Indian River.			
Stratton House.....J. Fraser	50	1.25 to 1.50	7.00 upwards.
Port Carling House.....Jos. Ruddy	50	1.50 to 2.00	8.00 to 10.00
LAKE ROSSEAU.			
Ferndale.			
Ferndale House.....Seymour Penson	80	1.00	6.00
Windermere.			
Windermere House.....Thos. Aitken	200	1.50	7.00 to 9.00
Fife House.....D. Fife, jr.	75	1.25	7.00
Skeleton Lake (Aspahn P.O.)—Via Winder-			
mere.			
Newport House.....Bradant Bros.	50	1.50 to 2.00	8.00 to 10.00
Woodington House.....M. Woods	60	1.25	6.00 to 7.00
Cleveland's (Minnott P.O.)			
Cleveland's Hotel.....Mrs. C. J. Minott	70	1.50	6.00 to 7.00
Edgerton House.....J. F. Pann	50	1.50	6.00
Mormus House P.O.			
Mormus House.....W. D. McNaughton	50	1.00	5.00
Juddhaven P.O.			
Enschille.....Alf. Judd	30	1.00
Rosseau.			
Maplehurst Hotel.....The Manager	100	1.50 to 2.00	10.00 to 14.00
Monteith House.....J. Monteith	150	1.50 to 2.00	10.00 to 12.00
LAKE JOSEPH.			
Port Sandfield, between Rosseau & Joseph.			
Prospect House.....E. Cox	200	2.00	9.00 to 12.00
Elgin House.....Lambert Love	100	9.00 to 12.00
Hamill's Point Hotel.....Mrs. Fawcett	70	1.25	6.00 to 7.00
Orange Lea House.....Miss Creigh	40	8.00 to 9.00
Stanley House.....W. B. Maclean	100	1.50 to 2.00	8.00 to 10.00
Barnesdale House.....J. J. Barnes	25	1.00	6.00
Gordon House (Gordon Bay P.O.)			
.....A. Winter	75	1.00 to 1.50	6.00 to 8.00
Port Cockburn.			
Summit House.....H. Fraser & Sons	200	1.50 to 2.00	9.00, 10.00, 12.00
Star Lake Hotel.....Hugh Malheron	50	1.50	7.00
HUNTSVILLE and Lake of Bays District.			
Reid House.....J. M. Reid	100	1.00 to 2.00	6.00 to 10.00
Vernon House.....John Cook	50	1.00	5.00
Deerhurst Hotel.....Manager	50	1.50 to 2.00	8.00 to 10.00
Lake View Hotel, Peninsula			
Lake P.O.....J. G. Henderson	50	1.00	5.00
Mrs. Lye.....Mrs. H. Lye	25	6.00 to 8.00
And many others on adjacent lakes.			
Also private boarding houses at \$4.00 to			
\$6.00 per week.			
BURK'S FALLS and Magnetawan River Dis-			
trict.			
Burk House.....I. N. Burk	75	1.50 to 2.00	8.00 to 10.00
Clifton House.....S. E. Brasher	100	1.00	6.00
Lake Couchie—Magnetawan Route.			
Cecche House.....W. A. Cowan	5.00 to 6.00
North Bay.			
Pacific.....W. L. Perkins	50	1.50 to 2.00	10.00
The Queen's.....E. H. Shepherd	50	1.00 to 1.50	Special.

QUICK LUNCHES WELL SERVED AT . . .

The Boston Lunch,

LADIES' AND GENTLEMEN'S RESTAURANT.

Open day and night. For business men, the down-town shopper, and tourists from boats and trains. Tables reserved for ladies. Rates moderate.

ERNEST RAU, Proprietor.

99 Yonge St., opp. News Office, TORONTO, ONT.

Noted House for

Travelling Rugs and Golf Capes.

Camelhair Blankets and
Specialties for Campers.
Woollen Khaki Suitings
and Puttees.

Before returning home get fitted
out with

Jaeger
PURE WOOL UNDERWEAR
Send for
Illustrated
Catalogue.
CENTRAL CANADIAN DEPOT
85 KING ST W, TORONTO.

Why don't you buy your

PHOTOGRAPHIC SUPPLIES

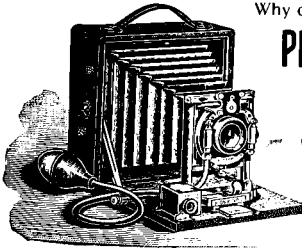
from the wholesaler.

We Make Mounts.

THE **W. A. LYON CO.**

OF TORONTO, LIMITED,

130-132 Bay St., TORONTO.



FARM HOUSE BOARD.

ACTON ISLAND FARM, LAKE MUSKOKA.

Accommodation for a few boarders. Fresh Eggs, Vegetables, Milk and Fruit from the farm. Cold Spring Water, Good Boating and Fishing, Beautiful Scenery, Woodlands, Walks, and Fine Sand Bathing Beaches safe for children. Special arrangements for families staying for the season. For terms apply to

SAMUEL J. WHITE, Whitesides P.O.

ASSESSMENT SYSTEM.



HEAD OFFICE :

*Corner Richmond and Bay Streets,
TORONTO, CAN.*

OFFICE FOR EUROPE—24 Charing Cross, London, England.

OFFICE FOR UNITED STATES—6436 Kimbark Ave., Chicago, Ill.

OFFICE FOR INDIA—6 Park Street, Calcutta.

OFFICE FOR AUSTRALIA—71 Temple Court, Melbourne.

OFFICERS OF SUPREME COURT.

ORONHYATEKHA, M.D., S.C.R., Toronto, Canada.

HON. JUDGE WEDDERBURN, P.S.C.R., Hampton, N.B.

VICTOR MORIN, B.A., LL.B., S.V.C.R., Montreal, Que.

JOHN A. MCGILLIVRAY, Q.C., S.S., Toronto, Canada.

H. A. COLLINS, S.T., Toronto, Canada.

THOMAS MILLMAN, M.D., M.R.C.S.E., S. Physician, Toronto.

HON. ELLIOTT G. STEVENSON, S.C., Detroit, Mich.

The Benefits Given by the I.O.F.

Your special attention is called to this great Fraternal Benefit Society, and you are invited to become a member of it, thereby securing the following substantial benefits:

(A) For Yourself, During Your Lifetime.

- 1—The Social and Fraternal Privileges of the Court Room.**
- 2—Free Medical Attendance** by the Court Physician except where dispensed with by by-law of the Court. Some Courts also furnish free medicine and in certain cases trained nurses.
- 3—A Sick Benefit of \$3 a week** for the first *two* weeks, \$5 per week for the next *ten* weeks, and, subject to the approval of the Executive Council, \$3 per week for *twelve* additional weeks of any illness. (The Sick and Funeral Benefits are optional. It costs \$2 to become enrolled for them; the monthly premiums run from 40c. to \$1 per month, according to age at enrollment).
- 4—A Total and Permanent Disability Benefit of \$50, \$100, \$200, \$300, \$400, or \$500** (not over the face value of your Mortuary Benefit Certificate, with exemption from the further payment of premium or Court dues, upon total and permanent disability from **disease** or accident, which may occur at any time.
- 5—An Old Age Benefit** consisting of exemption from payment of Premiums and Court Dues after the *seventieth* year of age.
- 6—An Old Age Disability Benefit**, available only after one is *seventy* years of age, consisting of \$50, \$100, \$200, \$300, \$400 or \$500 (not over the face value of your Mortuary Benefit Certificate), payable annually for ten years from the date at which you are adjudged to be totally and permanently disabled by the infirmities of age. If death should occur before the ten annual payments have been made, the unpaid instalments would be paid in one sum to your beneficiaries.
- 7—An Old Age Pension Benefit** payable annually during total and permanent disability, which you can elect to take as a substitute for the "Old Age Disability Benefit," upon being adjudged totally and permanently disabled by the infirmities of age. The amount of the pension is determined (a) by the amount of the Mortuary Certificate held, and (b) by the age at which the total and permanent disability occurs. On a \$5000 certificate or policy at age 70 the annual pension would be \$546; at age 75, it would be \$754, etc. (See section 257 of the Constitution and Laws of the Order).

Rates of Premiums per \$1,000 in the Ordinary Class.

Age.	Per Month.	Per Year.
18	.76	\$ 9.12
19	.78	9.36
20	.80	9.60
21	.82	9.84
22	.84	10.08
23	.86	10.32
24	.90	10.80
25	.94	11.28
26	.98	11.76
27	1.02	12.24
28	1.06	12.72
29	1.10	13.20
30	1.14	13.68
31	1.18	14.16
32	1.22	14.64
33	1.26	15.12
34	1.32	15.84
35	1.38	16.56
36	1.44	17.28
37	1.50	18.00
38	1.56	18.72
39	1.62	19.44
40	1.68	20.16
41	1.76	21.12
42	1.84	22.08
43	1.92	23.04
44	2.00	24.00
45	2.08	24.96
46	2.18	26.16
47	2.28	27.36
48	2.50	30.00
49	2.70	32.40
50	2.90	34.80
51	3.10	37.20
52	3.30	39.60
53	3.60	43.20
54	3.90	46.80

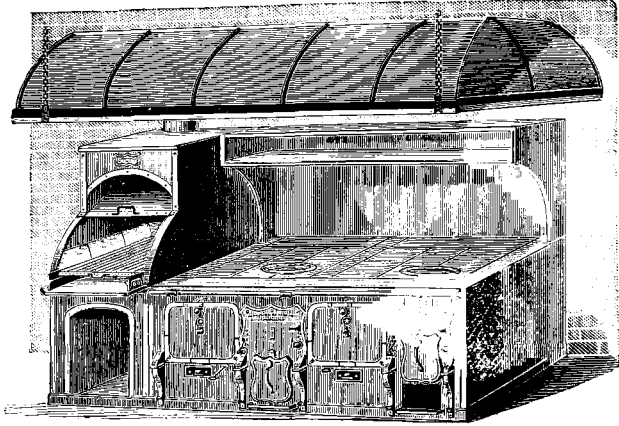
(B) For your Beneficiaries, at your Death.

- 8—A Burial Benefit of \$100** if you have taken the Old Age Pension Benefit, to insure decent interment.
- 9—A Funeral Benefit of \$200** at the time of your death you are enrolled for the Sick and Funeral Benefits, to assist in defraying funeral expenses.
- 10—A Mortuary Benefit of \$50, \$1,000, \$2,000, \$3,000, \$4,000, or \$5,000**, or so much thereof as has not been previously paid to yourself.

The I.O.F. Investments.

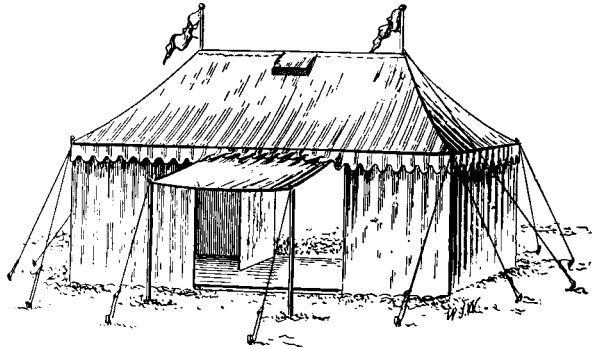
The Supreme Court, under the amendments to its Act of Incorporation secured from the Parliament of Canada in 1927, maintains a Government deposit of \$100,000 in Canada. It also has a deposit of £25,000 sterling in Great Britain and Ireland, and a deposit of \$57,250 in the United States. The balance of the funds are deposited in sound monetary institutions or invested in first mortgages upon improved real estate and in municipal securities. The following table shows how the funds were distributed on the last day, 1939:

Deposit Insurance Department	\$ 100,000.00
United States Bonds in United States (Wisconsin Ins. Dep.)	95,610.17
United States Bonds in United States (Wisconsin Ins. Dep.)	148,758.36
Loan to New Brunswick Government	20,000.00
Real Estate and First Mortgages	2,834,964.79
Municipal and School Bonds	120,326.09
Various Bank Deposits	408,684.47
Total	\$3,778,663.58



HOTEL KITCHEN APPARATUS AND PLANT.

Geo. Sparrow & Co., ^{118 King} St. E., Toronto, ^{Send for} Catalogue.



*William Bartlett & Son, ^{Phone 2828.}
16 Adelaide St. West, TORONTO,*

*Manufacturers of and Dealers in Window Shades, Flags,
Tents, Awnings, Wagon and Horse Covers. . . .*

Tents for renting to tourists and campers a special feature.

A. CLUBB & SONS,

49 KING ST. WEST, TORONTO.
ESTABLISHED 1878.

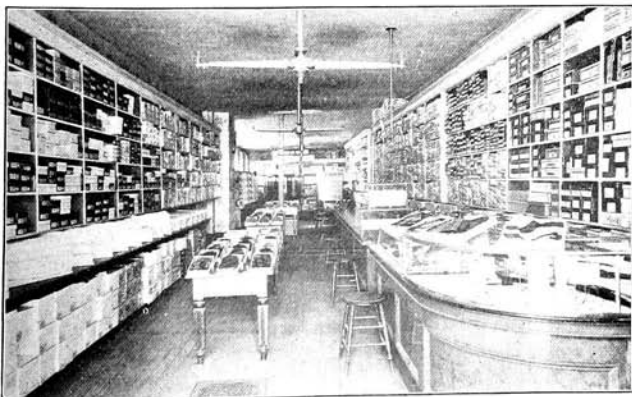


Direct Importers of Fine Havana Cigars and Smokers' Sundries, Sole proprietors of The Osgoode Cigar and Cigarettes. Sole Canadian Agents for the Celebrated "Peterson Patent Pipe." Sole Agents for Player's Navy Cut Tobaccos. Agents for B B B. and G B D. Brand of Briar Pipes. Agents for Richmond Cavendish Co. English Pioneer Gold Flake Cavendish Tobacco. Sole Agents Oake's Indian Cigars.

A large and complete assortment of English and American Tobaccos always in stock.

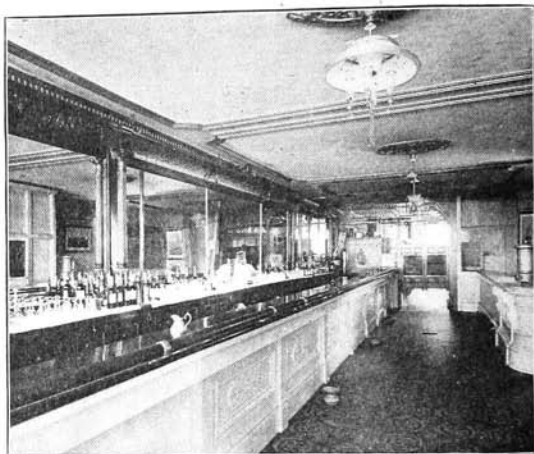
WHOLESALE AND RETAIL.

Express prepaid to any point in Ontario on orders amounting to \$5 or over.



INTERIOR—WHEATON & CO.

WHEATON & CO., Shirt Makers and Importers of Fine Men's Furnishings. 13 King St. West, TORONTO, CANADA.



THE STAR,
Hotel and Café,
99 King Street West,
TORONTO.

Entirely Remodelled and Decorated.
Bar Elegantly Fitted and Furnished.
Best Brands Wines, Liquors and Cigars.

JOHN STORMONT,
Proprietor.

"My Valet"

FOUNTAIN THE TAILOR.

30 ADELAIDE STREET WEST,

Pays particular attention to Repairing,
Altering, Cleaning and Pressing

GENTLEMEN'S GARMENTS.

Goods called for and returned weekly.

'PHONE 8074.

DRESS SUITS TO RENT.

CLARENDON

Toronto's Popular **CAFÉ,**
Restaurant.

Choice Brands Wines,
Liquors and Cigars.

92 KING STREET WEST,
TORONTO, ONT.

OWEN LEONARD, Proprietor.
TEL. 1795.

The Strand.

Best brands Wines, Liquors and
Cigars.

Business Man's Lunch and Dining
Room upstairs.

E. J. EVANS, Proprietor.

Telephone 1522.

8 Adelaide Street East, Toronto.

LONG LIFE IN A NUT SHELL.

...KOLA...

Celery and Pepsin

Will make you strong, cures Dyspepsia
and all Nervous Diseases, is endorsed
by eminent physicians as the best tonic
and muscle maker of the age, is very
palatable.
Manufactured by

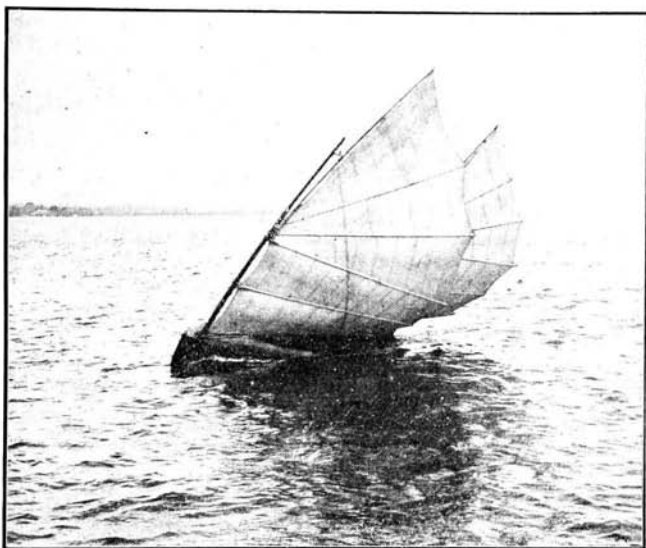
The Hygiene Kola Co.,
84 Church St., Toronto.

J. H. ROSS,

BUILDER OF

Hunting, Fishing,
Sailing, Surveying

CANOES



SKIFFS, YACHTS and STEAM LAUNCHES.

SEND FOR CATALOGUE.

ORILLIA, - ONTARIO, CANADA.

Native Canadian Indian Goods.

INDIAN HAY,
CANOES,

BIRCH BARK,
MOCCASINS,



LAKE
SUPERIOR
AGATES.

INDIAN CURIOS

FROM NORTH-WEST TERRITORIES, HUDSON'S BAY, Etc.

Niagara Falls Spar, etc.

WHOLESALE AND RETAIL.

RUSSELL'S, 118 King Street West, TORONTO,
NEARLY OPPOSITE ROSSIN HOUSE.

Tourists' and Campers' Supplies.

GROCERIES AND PROVISIONS supplied daily to all Camps, Cottages and Hotels on MUSKOKA LAKES by the SUPPLY BOAT "GIPSY." Boat calls wherever flagged, besides making regular trips on this lake.

Complete stock of Dry Goods, Groceries, Boots and Shoes, Flour and Feed, Paints, Oils, Hardware, Tinware, Fishing Tackle and Hunting Supplies.

J. BURGESS, Bala, Muskoka.

POST OFFICE ON PREMISES.

Boats and Canoes.

Full supply of Boats, Canoes, Sailboats, Paddles and Oars for rent by day, week or month.

D. BURGESS, Bala, Muskoka.

Morinus House,
Lake Rosseau, Muskoka.

*Good Fishing, Boating, Bathing
and Lawn Tennis.*

*Terms : \$6.00 and \$7.00 per week.
Special terms to families.*

W. D. McNAUGHTON,
MORINUS HOUSE,
LAKE ROSSEAU, MUSKOKA, ONT.

Stratton House,
Port Carling,
Muskoka Lakes, Canada.

Summer Hotel; comfortable and
up-to-date; Fishing, Boating, etc.

Terms: \$1.50 and \$2.00 per day.

Correspondence promptly
attended to.

JOHN FRASER, Proprietor.

W. J. JOHNSTON,
PORT CARLING.

A LARGE
SUPPLY
OF . . . **Boats,**
Canoes,
etc.

KEPT CONSTANTLY ON HAND AT

**Port Carling, Windermere and
Port Sandfield.**

REPAIRING A SPECIALTY.

Queen's Hotel,

LAKEFIELD, ONT.,
Near the Otonabee River.

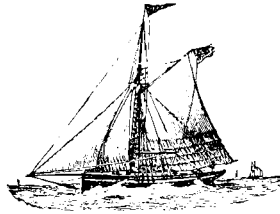
Headquarters for Stony Lake.

THE BEST COMMERCIAL AND
TOURIST HOTEL IN TOWN.

Tourists should take the 'Bus
to the Queen's Hotel
when visiting Lakefield.

R. J. MUNRO, - - - Proprietor.

JOHN CARLEY,
Boat Builder.



Skiffs, Yachts and Dinghies built to order and
for hire by hour, day, week or season; also tents
for hire.

BARRIE, ONTARIO.





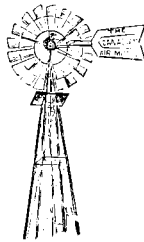
GRAVENHURST
BUSINESS DIRECTORY.

HOTEL WINDSOR, Gravenhurst, Muskoka, Ont.
 HOME OF THE COMMERCIAL TRAVELLER AND TOURIST.
 Good Fishing, Hunting and Boating near Hotel.
 For courteous treatment and all-round satisfaction the WINDSOR is unexcelled.
 Large, Airy Rooms, Excellent Table, and all Modern Conveniences.
 GOOD SAMPLE ROOMS. TERMS—\$1.50 to \$2.00 per day.
 \$7.00 to \$10.00 per week.
WM. McDIVITT, Proprietor.

ALBION HOTEL, GRAVENHURST, ONT.
 SPECIALLY ADAPTED TO FAMILY AND TOURIST TRADE.
 Only First-Class Brands of Liquors and Cigars kept in Stock.
 RATES—Special Rates for Families on Application.
 Accommodation—50 Guests. **F. WASLEY, Proprietor.**

H. R. KING, BUTCHER, GRAVENHURST,
TOURISTS, CAMPS AND COTTAGES supplied with Fresh Meats during
 the Season. Goods shipped by the M. N. Co.'s Boats. Freight prepaid.
HUNTING PARTIES provisioned for the entire hunting season. Accurate and re-
 liable information supplied as to the best location for Deer, Bear and all
 kinds of Game. Mail Orders Promptly Attended to.
 Telephone communication with Muskoka Wharf. **PHONE NO. 27.**
 Contractor for Supplies for M. N. Co.'s Boats

J. E. CLIPSHAM, Gravenhurst, Ont.



AGENT FOR
ONTARIO WIND ENGINE AND
PUMP CO., Limited,
TORONTO.
ALSO HANDLES, FORCE PUMPS, PIPING, ETC.
 Competent man always available for Repairs and
 Fitting-up New Outfits of Windmills,
 Force Pumps, etc.

THOMAS
FIELDING..... LIVERY,
GRAVENHURST, ONTARIO.

*Busses meet all trains and boats. First-Class Livery for Tourist and Excursion Parties, Gladstones, Buggies, etc., etc. Baggage delivered promptly.

Penetanguishene BUSINESS DIRECTORY.

CAMPING SUPPLIES. ❁ ❁

Special attention given to Tourists' and Campers' orders.

W. M. THOMPSON, General Merchant and Fine Grocer,
First Store up from G.T.R. Station. GREEN BLOCK,
Goods Delivered Free to all Boats. PENETANGUISHENE, ONT.
ALL ORDERS PROMPTLY ATTENDED TO.

PENETANGUISHENE LIQUOR STORE,

J. WYNNE, Prop., - PENETANGUISHENE, ONT.

A full stock of **ALES, WINES** + Telephone Orders from the Dock and other
and **LIQUORS**, (Domestic and parts of the Town promptly attended to.
Imported) ALWAYS ON HAND. + **Camping Parties Liberally Dealt With.**
ONLY LICENSED DEALER IN TOWN.

THE PENETANGUISHENE FOUNDRY AND MACHINE SHOPS.

P. PAYETTE & CO.,

Manufacturers of **MARINE ENGINES, Boilers and Machinery** for Steam Yachts,
SAW MILL MACHINERY, CASTINGS, etc.
Marine Engine repairing a specialty. Fittings of all kinds manufactured and
kept in stock
PENETANGUISHENE, ONT.

G. H. WRIGHT, DEALER IN

SHELF AND HEAVY HARDWARE.

Ammunition, Fishing Tackle, Tinware, Stoves, Paints, Oils, Varnishes,
Cutlery, Etc. Special attention given to Campers' Outfits.
Opposite Wright's Meat Market. PENETANGUISHENE, ONT.

THE GEORGIAN BAY BOAT HOUSE.



Boats, Skiffs and Canoes For Hire. Special Rates to Camping
Parties. Oars, Paddles, Row-
locks, etc., kept in stock for sale. Boats, Yawls and Steam Launches built to order.
IMPROVED CANOE MODEL.
For terms write **H. E. GIDLEY, PENETANGUISHENE, ONT.**
Boat House at the foot of Main Street (at Steamboat Wharf).

C. A. NETTLETON, PENETANGUISHENE, ONT.,

Graduate O.C.P., and holding certificate of N.Y. Board of Pharmacy.
(Next door to "CANADA HOUSE.")
FINEST DRUG STORE IN NORTHERN ONTARIO.
Modern and Up-to-Date. Thoroughly Equipped. American Tourist
trade a special feature.
Agent for Parke Davis & Co.'s (Detroit) Fine Prepared Drugs, Ganong Bros.'
Choicest Confectionery kept exclusively. Finest Drugs and all Proprietary
Medicines. **SODA WATER FOUNTAIN** (Choicest Fruit Flavors).
Toilet Articles, Fine Stationery, Fancy Goods, Choice Tobacco, Cigars, Cigar-
ettes, etc., Hammocks, Fishing Tackle, Sporting Goods and latest works of fiction.
Prescriptions carefully prepared. Agent C.P.R. PHONE No. 15.

**Excursion Return Fares. Tickets on Sale May 1st to October 31st.
Good Returning until November 30th, 1900, Except
as Otherwise Designated Below.**

-TO-	From Hamilton.	From Toronto.	Via Hamilton and Beeton, or via Hamilton and Toronto, or via Georgetown and Beeton.		Via Hamilton and Beeton, or via Hamilton and Toronto, or via Port Dalhousie, Steamer & Rail.
			From Detroit.	From Pt. Huron.	From Suspension Bridge or Niagara Falls.
† All Round Muskoka Lakes	\$ 75	\$ 55	\$ 00	\$ 00	\$ 80
Bala	8 25	6 05	13 50	11 50	8 30
Barnesdale	8 75	7 05	14 50	12 50	9 30
Beaurogrove	6 75	5 55	13 00	11 00	7 60
Connamaris	7 25	5 75	13 20	11 20	8 00
Bohemian Island	5 75	6 55	14 00	12 00	8 80
Bracebridge	6 75	5 55	12 40	10 40	7 80
Cape Elizabeth	7 75	6 55	14 00	12 00	8 80
Cleavelands (Almott)	7 45	6 25	13 70	11 70	8 50
Crangle Lea	8 25	7 05	14 50	12 50	9 30
Ferndale	7 25	6 05	13 50	11 50	8 30
Gordon Bay	8 25	7 05	14 50	12 50	9 30
Gregory	7 45	6 25	13 70	11 70	8 50
Hamilton Point	7 75	6 55	14 00	12 00	8 80
Hutton House	6 95	5 75	13 20	11 20	8 00
Jubaven } Laurie } Maplehurst }	7 75	6 55	14 00	12 00	8 80
Maplehurst } Mazengarb } Milford Bay }	7 25	6 05	13 50	11 50	8 30
Milford Bay }	6 95	5 75	13 20	11 20	8 00
Moxey	7 25	6 55	14 00	12 00	8 80
Morinus House	7 45	6 25	13 70	11 70	8 50
Mortimer's Point	6 95	5 75	13 20	11 20	8 00
Oakland Park	7 25	6 05	13 50	11 50	8 30
Pennan's Isle	7 75	6 55	14 00	12 00	8 80
Point Kaye	7 95	5 75	13 20	11 20	8 00
Port Carling	7 25	6 05	13 50	11 50	8 30
Port Cockburn	8 25	7 05	14 50	12 50	9 30
Port Kewaydin	6 95	5 75	13 20	11 20	8 00
Port Sandfield	7 75	6 55	14 00	12 00	8 80
Redwood	7 75	6 55	14 00	12 00	8 80
Rosseau	7 75	6 55	14 00	12 00	8 80
Rosseau Falls	7 75	6 55	14 00	12 00	8 80
Rossvicar	7 75	6 55	14 00	12 00	8 80
Santaron	6 05	4 85	12 30	10 30	7 10
Stanley House	8 25	7 05	14 50	12 50	9 30
St. Elmo	6 75	5 55	13 00	11 00	7 80
Torrance	7 25	6 05	13 50	11 50	8 30
Walker's Point	6 75	5 55	13 00	11 00	7 80
Waldmere	7 45	6 25	13 70	11 70	8 50
Woodington	7 45	6 25	13 70	11 70	8 50
Yolo	8 05	6 85	14 30	12 30	9 10
Almie Harbor } Deport Farm. } Via Burk's Falls } Magnetawan }	10 50 10 05 9 80	9 30 8 85 8 60	16 75 16 30 16 05	14 75 14 30 14 05	11 55 11 10 10 85
Barrie	4 85	3 25	11 60	9 60	6 35
† Beaverton	4 50	2 90	11 00	9 00	5 15
Bracebridge (Rail)	6 15	5 00	12 40	10 40	7 25
Bark's Falls	8 15	6 95	14 40	12 40	9 20
Callander	10 10	8 90	16 40	14 40	11 45
† Cobocok	6 35	4 35	14 85	12 35	8 70
Collingwood	5 60	4 75	13 20	10 95	7 00
Embsdale	7 80	6 70	14 10	12 10	8 95
† Fenelon Falls	6 10	4 10	15 10	12 60	8 45
† Frederic	5 35	6 75	8 85	5 45	7 70
† Gravonhurst (Muskoka Wharf)	5 75	4 55	12 00	10 00	6 40
† Grimby Park	76	2 50	1 20
† Hallarton	8 10	6 10	17 10	14 60	10 45
Huntsville	7 15	5 95	13 40	11 40	8 20
† Jackson's Point	2 80	2 20	12 45	9 95	5 75
Katrine	7 95	6 80	14 35	12 35	9 95
† Kincairdine	7 25	7 50	10 85	8 45	9 00
Lakehead	5 85	3 85	14 85	12 75	8 20
Lansbury	5 45	3 45	14 45	11 95	7 75
Midland	5 60	4 75	13 20	10 95	7 00
Muskoka Wharf	5 75	4 55	12 00	10 00	6 80
Nipissing Junction	10 20	9 10	16 60	14 60	11 50
North Bay	10 40	9 15	16 70	14 70	11 40
Nowar	7 55	6 35	13 90	11 90	8 60
Orillia to Severn, inclusive	5 35	4 10	11 60	9 60	6 35

† Tickets to points prefixed thus (†) are on sale June 1st to September 30th only,
good to return until November 1st, 1900.

-TO-

	From Hamilton.	From Toronto.	Via Hamilton and Beeton, or via Hamilton and Toronto, or via Georgetown and Beeton		Via Hamilton and Beeton, or via Hamilton and Toronto, or via Port Dalhousie, Steamer & Rail.
			From Detroit.	From Pt. Huron.	From Suspension Bridge or Niagara Falls.
Parry S'd via Penet'g or Mid'l'd	8 25	8 25	15 85	13 60	9 65
Parry S'd via Scotia Junction	9 90	8 70	16 20	14 20	10 95
Penetang	5 60	4 75	13 20	10 95	7 00
Powassan	6 60	8 40	13 95	13 95	10 65
Scotia Junction	7 75	6 55	14 10	12 10	8 80
South River	8 90	7 70	15 10	13 10	9 95
Southampton	7 35	7 45	11 50	9 00	9 70
Sundridge	8 60	7 50	14 90	12 90	9 75
Trout Creek	4 30	8 15	15 55	15 55	10 40
Utterson	6 70	5 55	12 10	11 10	7 80
Waubausene	5 60	4 50	12 60	10 60	7 00
Baysville	8 90	7 70	15 15	12 15	9 95
Dorset or Coleridge	8 90	7 70	15 15	13 15	9 95
Dwight	8 40	7 20	14 65	12 65	9 45
Grassmere	7 65	6 45	13 90	11 90	8 70
Hillside & Portage	7 65	6 45	13 90	11 90	8 70
Sturgeon Point via Lindsay	5 45	3 65	14 45	11 95	7 75
Bobcaygeon via Lindsay	5 70	4 10	14 45	11 95	7 75
Burleigh Falls via Lakefield	7 75	5 95	14 85	12 75	8 20
Stony Lake via Lakefield	5 85	4 25	14 85	12 35	8 20
Young's Point via Lakefield	5 85	3 90	14 85	12 35	8 20

Tickets to points prefixed thus () are on sale June 1st to September 30th only, good to return until November 1st, 1900.

TO WHOM TO APPLY.

Full information as to Tickets, Sleeping Car Passes, Routes, Rates, Trains, etc., may be obtained from any agent of the GRAND TRUNK RAILWAY SYSTEM and its connections. The addresses of District, Travelling and principal Ticket Agents of the GRAND TRUNK RAILWAY SYSTEM only are shown below:

BOSTON, MASS. T. WANSLE, Trav. Pass'r Agt., 306 Washington St.
 BUFFALO, N.Y. J. D. McDONALD, City Passenger and Ticket Agent, 285 Main St. (Ellicott Sq. Building).
 CHICAGO, ILL. F. S. CAPRON, Trav. Pass'r Agt., Room 304 Rialto Building.
 " E. B. ROWLAND, Trav. Pass'r Agt., Room 304 Rialto Building.
 " J. H. BURGIS, City Pass'r and Ticket Agt., 219 Clark St., corner Jackson Boulevard.
 " F. E. SCOTT, Ticket Agent, Auditorium Annex, corner Michigan Ave. and Congress St.
 CINCINNATI, O. R. MCC. SMITH, Southern Passenger Agent, 417 Walnut St.
 CORTLAND, N.Y. R. BUSHBY, Travelling Passenger Agent, 19 Main St.
 DETROIT, MICH. BEN. FLETCHER, Trav. Pass'r Agent, 124 Woodward Ave.
 " C. C. CRAIGIE, Trav. Pass. Agt., 124 Woodward Ave.
 " GEO. W. WATSON, City Passenger and Ticket Agent, 124 Woodward Ave.
 GRAND RAPIDS, MICH. C. A. JUSTIN, City Pass'r and Ticket Agent, 97 Monroe St., Monton House Block.
 HAMILTON, ONT. C. E. MORGAN, City Pass'r and Ticket Agt., 11 James St. North.
 KINGSTON, ONT. J. F. HANLEY, City Pass'r and Ticket Agent.
 LONDON, ONT. E. DE LA HOOKE, City Pass'r and Ticket Agent, corner Richmond and Dundas Sts.
 LONDON, ENG. JOHN ROSS ION, Agent, 22 Leadenhall St., E.C.
 LOS ANGELES, CAL. W. F. BOTSFORD, Pacific Coast Agent, 126 West 2nd St.
 MILWAUKEE, WIS. B. C. MEDORA, City Pass'r and Ticket Agt., cor. Wisconsin and East Water Sts.
 MONTREAL, QUE. D. O. PEASE, District Passenger Agent, Bonaventure Station.
 " J. QUINLAN, Travelling Passenger Agt., Bonaventure Station.
 " W. H. CLANCY, City Pass'r and Ticket Agt., 137 St. James St.
 NEW YORK, N.Y. F. F. DWYER, Eastern Passenger Agent, Dun Building, 290 Broadway.
 NIAGARA FALLS, N.Y. D. ISAACS, Ticket Agent, Prospect House.
 " GEO. W. WOOD, Ticket Agent, 122 Falls St.
 OGDENSBURG, N.Y. WARREN L. PACKARD, Ticket Agent, 59 Ford St.
 PORT HURON, MICH. C. R. CLARKE, Ticket Agt., G.T.R. Station and 917 Military St.
 QUEBEC, QUE. C. E. TENNY, City Passenger and Ticket Agent, corner St. Anne and Du Fort Sts., and Ferry Landing, Dalhousie St.
 SAN FRANCISCO, CAL. W. O. JOHNSON, Agent, 219 Front St.
 ST. PAUL, MINN. DAVID BROWN, JR., Trav. Pass'r Agt., 111 Endicott Arcade.
 SHERBROOKE, QUE. E. W. SMITH, City Pass'r and Ticket Agt., 16 Wellington St.
 TORONTO, ONT. M. C. DICKSON, District Passenger Agt., Union Station.
 " CHAS. S. PROCTOR, Travelling Passenger Agt., Union Station.
 " J. W. RYDER, City Passenger and Ticket Agt., north-west cor. King and Yonge Streets.

CHAS. H. HAYS, General Manager, MONTREAL.	W. E. DAVIS, Passenger Traffic Manager, MONTREAL.	G. T. BELL, Gen. Pass. and Tkt Agt., MONTREAL.
GEO. W. VAUX, Asst. Gen. Pass. and Ticket Agt., CHICAGO.	OR TO	H. G. ELLIOTT, Asst. Gen. Pass. and Ticket Agt., MONTREAL.
J. S. PLAYFAIR, President Muskoka Navigation Co., TORONTO.		A. P. COCKBURN, Mngr. and Sec'y Muskoka Navigation Co., GAVENHURST.

Grand Trunk Railway SYSTEM.

THE GREAT COMMERCIAL HIGHWAY AND
DOUBLE TRACK ROUTE,

EXTENDING FROM THE

❁ Atlantic to Chicago and Milwaukee, ❁

4,186 MILES OF TRACK
UNDER ONE MANAGEMENT.

The Popular Route and Tourist Line of America

..... TO.....

NIAGARA FALLS, BUFFALO, TORONTO, LONDON,
THOUSAND ISLANDS, DETROIT AND CHICAGO,
MONTREAL, QUEBEC, SAGUENAY.

THROUGH FAST TRAINS TO THE

White Mountains and
Atlantic Coast Resorts.

FOR DESCRIPTIVE GUIDE BOOKS, TIME
TABLES, ETC., APPLY TO TICKET
AGENTS OF THE GRAND TRUNK
RAILWAY SYSTEM.



CHAS. M. HAYS,
General Manager,
MONTREAL.

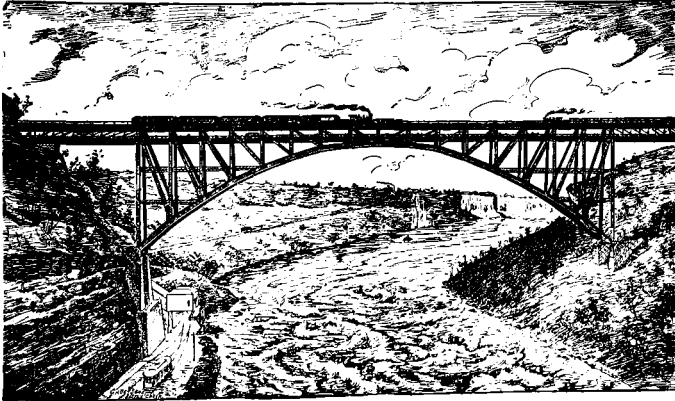
W. E. DAVIS,
Passenger Traffic Manager,
MONTREAL.

GEO. T. BELL,
Gen. Pass. and Tkt. Agt.,
MONTREAL.

H. G. ELLIOTT,
Asst. Gen. Pass. and Tkt. Agt.,
MONTREAL.

GEO. W. VAUX,
Asst. Gen. Pass. and Tkt. Agt.,
CHICAGO.

*Grand Trunk
New Single Arch Double Track
Steel Bridge over the
Niagara River.*



*One of the greatest engineering feats
of the nineteenth century.*

Stouffville is a very pretty town, and the junction, half way between Toronto and Jackson's Point, on G.T.R. Midland Division.



THE MANSION HOUSE, opposite railway station, is entirely renovated, and is just the place for meals and refreshments—between trains. First-class Liquors and Cigars. Good meals and rooms. Accommodation, 100. Rates \$1.00 per day; \$6.00 per week. Prop., F. D. MILLER, Stouffville.



**“Tiger Brand”
Clothing.**

RETAIL DEPARTMENT—“From Maker to Wearer.”

“Tiger Brand” is the perfection of the ready-made clothing idea, and that's why we have so many people from the “land to the south” say when they see it: “It's as good as the best we buy and just about the cost.”

Specialties for summer, \$10.00, \$12.00 and \$15.00, suits and overcoats—stylish and well made.

Everything that's correct in summer clothing and furnishings for man or boy you'll find here.

Your money back if you want it.

E. BOISSEAU & CO.,

TEMPERANCE AND YONGE STREETS.

Canoes *AND Boats.*



Always get the best when you purchase.

If you want the best Canoe or Boat your canoeing friends will tell you that the *English Canoe* is the standard.

Special Models for Fishing, Hunting, Cruising and Racing.

Special attention given to the wants of Hunt Clubs.

Write us for our Catalogue, sent free on application.



The Wm. English
Canoe Company,

W. J. ENGLISH, Secretary.
S. W. ENGLISH, Manager.

PETERBOROUGH,
Ont., Can.

A Fraternal Benefit Society for Men and Women

Independent^{Order} of Foresters



The
I.O.F.
is
now
Paying
in
Benefits
over
\$4000.00.
EVERY
DAY

