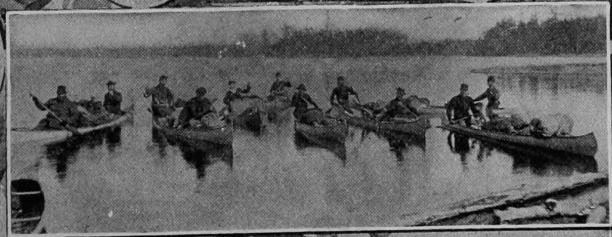
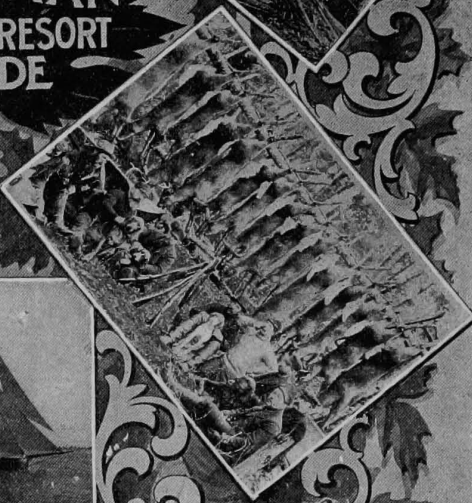


1897
CANADIAN
SUMMER RESORT
GUIDE



RICE LEWIS & SON

(LIMITED)

32 KING STREET EAST

SPAULDING BASE BALL REQUISITES

..LAWN TENNIS GOODS..

..FISHING RODS..

..REELS..

..SPORTING AND MILITARY RIFLES..

..REVOLVERS, GUNS..

..POWDER..

..LOADED SHELLS..

WRITE FOR PRICES AND CATALOGUE

RICE LEWIS & SON (LIMITED)

HARDWARE MERCHANTS

 **TORONTO**



MANUFACTURERS OF

FINE VARNISHES

JAPANS—ASPHALTUMS—SHELLACS

MAPLE LEAF BRAND COACH VARNISHES

J. H. FARR & CO.



ARMATURE INSULATING COMPOUND

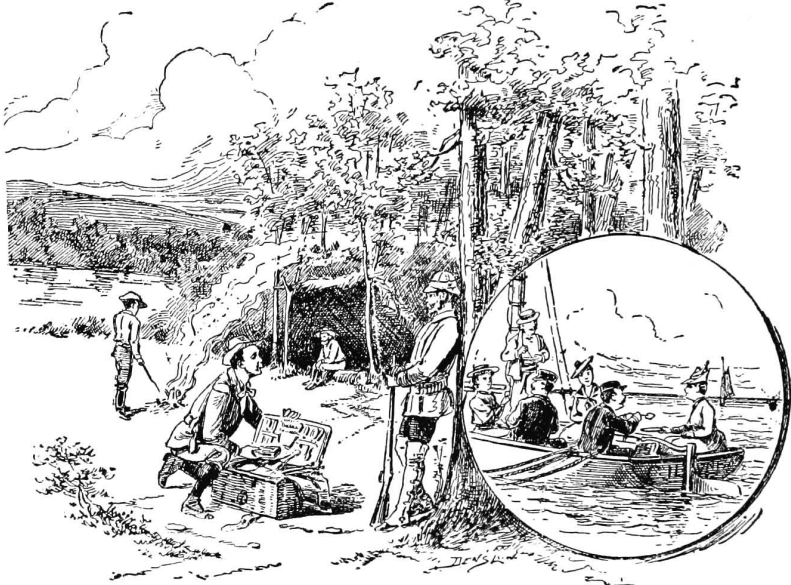
**Insulating Compound for Weather-Proof Wire, Tube
Compound, Mica Paste, Etc., Etc.**

**6 to 16 MORSE STREET
TORONTO**



Camping Supplies.

HEADQUARTERS FOR CAMPING SUPPLIES



What to Eat. here to Buy

express prepaid on all orders of \$10 and over (sugar and flour excepted) to any freight station in Ontario. Secure a copy of our Camper's Guide; we think it will suggest the possibility of a saving of very considerable amount in your summer purchases, and thus escape the exorbitant prices usually charged in country districts for such supplies.

THREE-FOURTHS OF MUSKOKA CAMPERS BUY THEIR SUPPLIES HERE. Mail orders have prompt and careful attention. Complete price list mailed free to any address. Trains met on arrival at Toronto. Orders sent in advance to campers' destination if required.

OUR BUSINESS: To supply at uniformly low prices a quality of **TEAS, COFFEES, IMPORTED DELICACIES, POTTED GAME, Etc.**, not obtainable elsewhere, **carefully packed, shipped**



MACWILLIE BROS.

Importing Grocers

Confederation Life Building

Cor. Yonge and Richmond Sts.

'Phone 326

Toronto

Mail or Telephone orders have prompt attention.

Summer Excursion Lines and Rates from Toronto.

Niagara River Line connecting with New York Central, Michigan Central, and Falls Electric Railways. The magnificent steamers *Chippewa*, *Chicora* and *Corona* make four round trips daily to Niagara (32 miles), Lewiston and Queenston (40 miles). Fare, one way, \$1.25; round trip, \$2.00; round trip excursions, returning same afternoon, special rates; family book tickets (twenty round trips), \$10.00.

Empress of India in connection with G.T.R. and Erie Ry. to St. Catharines (35 miles), Niagara Falls and Buffalo. Fare to St. Catharines, one way, 75c.; return, \$1.25; Niagara Falls, \$1.45; return, \$2.30; Buffalo, \$2.00; return, \$3.20. Family book tickets, 20 round trips, \$8.00; 10 round trips, \$5.00. Rochester direct every Saturday night at 11 p.m., commencing June 12th. Round trip, \$2.00. Arriving in Toronto 5 a.m. Monday morning.

Hamilton Steamboat Line—*Modjeska* and *Macassa* two trips each, daily, to Oakville (21 miles), Burlington Beach (30 miles), and Hamilton (36 miles). Fare, one way, 75 cents; round trip, \$1.25; round trip excursion, 50 cents; book tickets, (ten round trips), \$5.00.

The Toronto Ferry Co's Island Ferries run from 6.30 a.m., until 11 p.m., at intervals of ten to fifteen minutes. Fare each way, five cents, or \$150 tickets for \$5.

Richelieu and Ontario Navigation Co. to Montreal, 1,000 Islands, Quebec and the Saguenay.

Great Northern Transit Co. & North Shore Navigation Co. through 30,000 Islands of Georgian Bay to the Soo and Mackinac.

Muskoka Navigation Co. to Muskoka Lakes and Magnetawan River.

Special Boats to Long Branch and Lorne Park (8 and 15 miles west), Victoria Park (6 miles east), Grimsby Park (36 miles).

Baggage.—Tourists and passengers to Toronto by boat or rail will consult their convenience by availing themselves of the services of the Verral Transfer Company's officers, who board all incoming trains and meet all steamers, and will take charge of baggage checks, thus relieving passengers of any further trouble in looking after the forwarding of their effects.

CLOSE SEASONS FOR FISH AND GAME.

Province of Ontario.

FISHING—Salmon trout and white fish, Nov. 1 to Nov. 30th, both days inclusive; fresh water herring, Oct. 15th to Nov. 30th; speckled trout, Sept. 15th to May 1st; brook and river trout, Sept. 15th to Jan 1st; bass, April 15th to June 15th; pickerel, April 15th to May 15th; maskalonge, April 15th to June 15th. *Special Provisions*—Bass may be taken by hook and line only; not more than twelve may be caught in one day by any tourist. All bass under ten inches long must be returned to the water. Speckled Trout—Hook and line only allowed to be used; 50 only may be caught in any one day; 15 lbs. weight may be taken in any one day; trout 5 inches in length or under must be returned to the water.

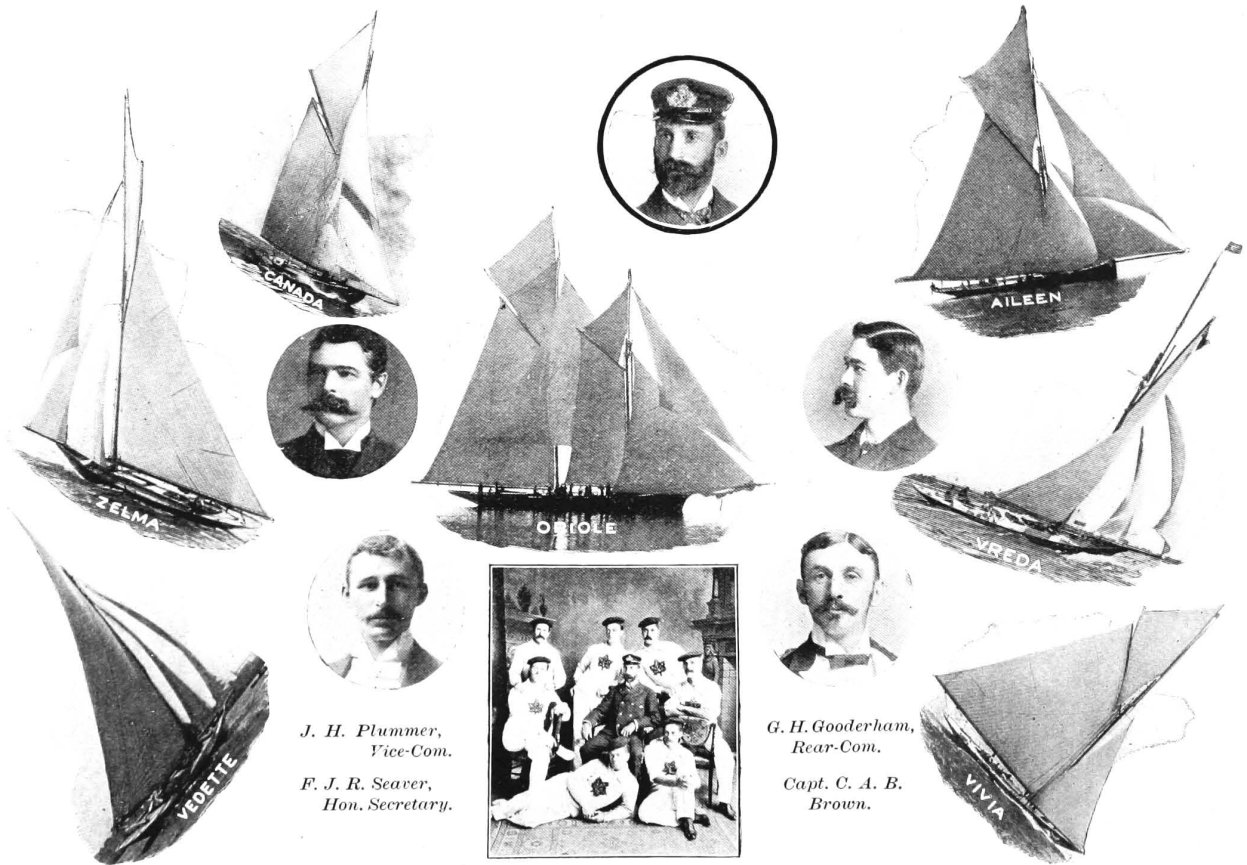
NOTE—*Sportsmen from foreign countries are not charged any license for fishing in Canadian waters when Canadian Boats and Guides are employed.*

HUNTING—No quail shall be taken or killed between Dec. 15th and Oct. 15th following. Grouse, pheasants, partridges, between Dec. 15th and Sept. 15th; swans or geese, May 1st to Sept. 15th; woodcock, snipe, plover, duck, Dec. 15th to Sept. 1st; beaver may not be killed until Nov. 1st, 1897; muskrat, May 1st to Jan. 1st, but muskrat, may not be shot during month of April; otter may not be killed until Nov. 1st, 1897. No person can take more than 400 ducks in any one season. Snipe, woodcock and partridge may not be sold, bartered or exchanged in Ontario, no matter where taken or procured, until Oct. 15th, 1897. Moose, elk, reindeer and caribou may not be killed until Oct. 20th, 1897. Deer, close season, Nov. 15th to Nov. 1st of year following.

SPORTSMEN—For sportsmen in parties of five or more travelling together on the going journey on hunting or fishing expeditions, return tickets, good for one month, will be issued at single first-class fare and a third, and two hundred (200) pounds baggage, consisting of wearing apparel and sportsmen's outfit, such as tents, camp utensils, etc., including a fish or game catch of 50 lbs. in weight, will be carried free for each *bona fide* sportsman. One dog will be carried free in the baggage car, for each sportsman, but all dogs in excess of this allowance will be charged for at regular rates. Guns in wooden, canvas or leather cases may be taken into passenger cars, but if not so protected they must be conveyed in the baggage car, at the owner's risk. Canoes, skiffs and other boats will not be taken in the baggage car, but must be forwarded by freight train or by Express.

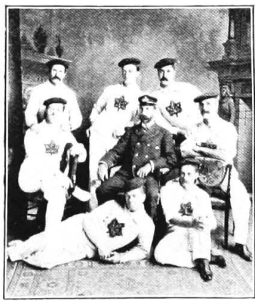
TROLLING—Trolling for salmon trout begins about the 24th of May and lasts about two weeks. The Indians think the best time in spring is while the blossoms are on the wild plum trees. In the fall it begins about the middle of October and lasts about the same time. Bass, pickerel and maskalonge will take the spoon freely during the period allowed by the Game Laws.

In the warm weather the salmon trout keep close to the bottom. It is then necessary to use a line 200 or 300 feet long, with about two pounds of a sinker, so that the bait may reach a great depth.



J. H. Plummer,
Vice-Com.
F. J. R. Seaver,
Hon. Secretary.

G. H. Gooderham,
Rear-Com.
Capt. C. A. B.
Brown.



Emilius Jarvis, Commodore.
Capt. Jarvis and Crew of "Canada."

REPRESENTATIVE YACHTS OF THE R.C.Y.C. WITH OFFICERS OF THE CLUB FOR 1897.

Canadian Summer Resort Guide

ILLUSTRATED SOUVENIR

AND

::: GUIDE BOOK :::

OF

Some of the Principal Fishing, Hunting,
Health and Pleasure Resorts

AND

Tourist and Excursion Routes of Canada

*WITH MAPS AND TABLES OF RAILWAY AND STEAMBOAT FARES
AND CONNECTIONS, HOTEL RATES, ETC.*

FOURTH EDITION.

Edited and Published by FREDERICK SMILY, Toronto.

TORONTO:
MURRAY PRINTING COMPANY.

1897.

Entered according to Act of Parliament of Canada, in the year of Our Lord One Thousand Eight Hundred and Ninety-seven, by FREDERICK SMILY, in the Office of the Minister of Agriculture, at Ottawa.

.. PREFACE ..

THE year Eighteen Hundred and Ninety-seven marks an epoch in the world's history. It is the year of the Diamond Jubilee of the Queen of England, and commemorates sixty years of the most prosperous and beneficent rule the world has known.

This year will be observed throughout the world by the great Anglo-Saxon race with loud rejoicings, and that great Empire on which the sun never sets will be more united than ever before.

To Canadians the event is most auspicious and means much. Never before has such an opportunity occurred for Canada and its vast resources to become better known to the Mother Country and to the world at large.

The thousands who will witness England's pageants will also recognize the prominent part to be played by Canada in the great celebration.

The great mineral resources, the wealth and treasures of forest and stream, the matchless summer climate of this country, are slowly but surely winning recognition. It is with the latter that this work principally deals.

The stream of visitors to Canada will be unusually large this season. Toronto will entertain large delegations and conventions, notably the annual meeting of Scientists from all parts of the globe, the Epworth League and many others, and thousands will return to their far distant homes carrying with them bright recollections of our glorious "Summer Land."

It is with feelings of gratification, therefore, that we present to our numerous readers the Fourth Edition of the CANADIAN SUMMER RESORT GUIDE, being convinced that it will, as in the past, be gladly received by those in search of the many attractions, the health, sport and recreation which are so amply provided among the forests, lakes and streams of Canada.

FREDERICK SMILY.

TORONTO, *May, 1897.*

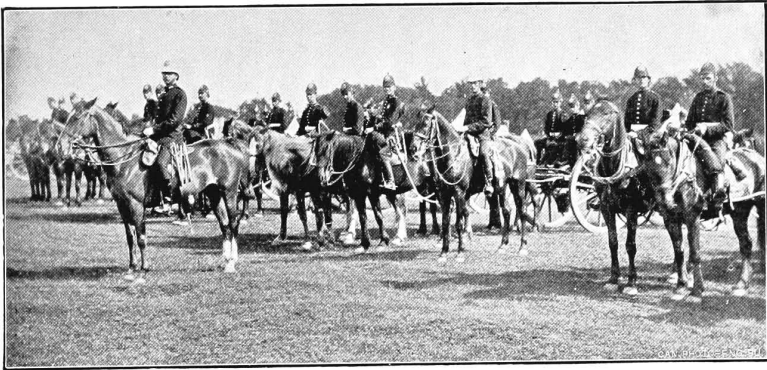
Canadian Summer Resort Guide.

TORONTO.

MUCH has been written of the claims of Toronto as a Summer Resort, and to thousands the attractions to be found here are too well known to require repeating.

To those who are not acquainted with this beautiful city we will endeavor briefly to show cause why Toronto is so popular during the summer season with tourists and excursionists, and why she is chosen as a centre for conventions of important bodies and organizations.

Situated on the north shore of Lake Ontario, Toronto, the principal city of Ontario, is favored with a summer temperature at all times cool and refreshing, owing to the constant breezes from the lake. The city

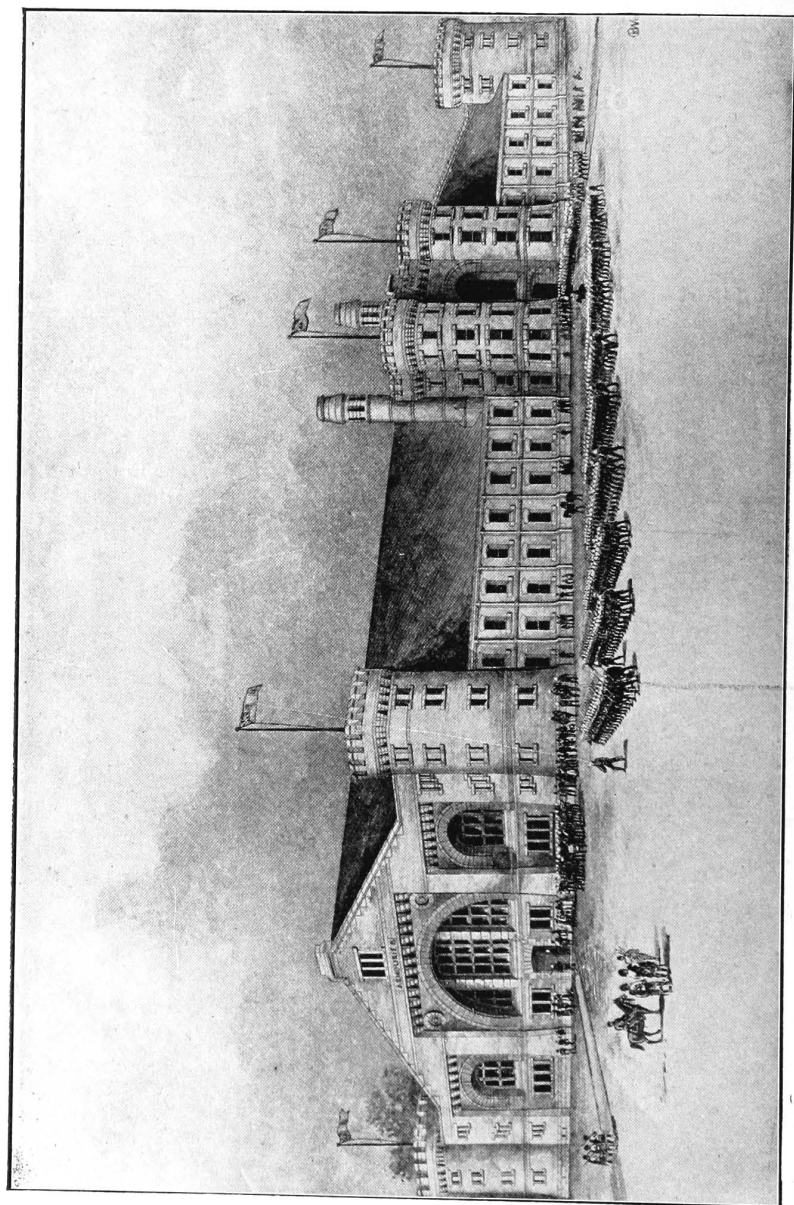


Field Battery "in Quarter Column."

is remarkable for the beauty of its residential streets, its parks, gardens, its comfortable and elegant homes with their settings of lawns, shrubbery, flowers and shade trees.

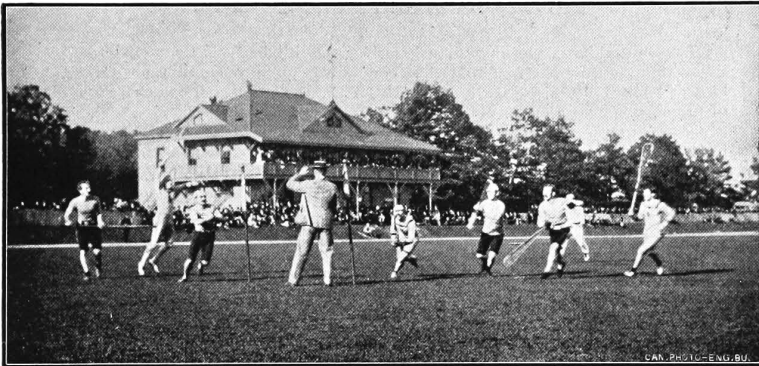
The "Queen City of Canada" so deservedly named, is the centre of railway and steamboat traffic, of numerous excursion lines, and tourists pass through to all points east, west and north from the various centres of the United States and elsewhere.

Toronto is also specially favored as to its environments ; leaving the more central portions of the city, and travelling north, east, or west, by



The Armouries.

trolley car, the visitor is quickly transported to scenes of wilder beauty ; to the north and north-east are rugged ravines of picturesque grandeur, their steep slopes clothed with fragrant pines and evergreens, and carpeted with moss, ferns and wild flowers ; the winding valleys threaded by walks and drives, where rippling creeks, with nature's sweetest music, murmur their way to the placid Don River to be borne to the broad bosom of Lake Ontario ; these, known as the Rosedale ravines, intersect the streets of one of the prettiest residential portions of the city, and are spanned by graceful iron bridges at the main thoroughfares. To the east on the outskirts of the city, and on the lake front, are the popular Victoria Park, Scarboro' Heights, Kew Beach, and Balmy Beach, many of Toronto's fashionable residences being located at the two last named resorts. Bordering on the western limits of the city are the Exhibition Grounds ; High Park, the people's playground : beyond is the beautiful



Canada's National Game—Lacrosse—At Rosedale Grounds.

Humber River ; and yet further west, by the Lake Shore section of the street railway system, lies Long Branch, one of the most popular summer resorts near Toronto ; Lorne Park is still west of this, and is reached by boat or railroad. All the above named places can be reached by street car, rail or steamboat.

To the south of the city, across the beautiful natural harbor, nearly two miles in width, by about four long, is Toronto Island, the popular resort of thousands of citizens and strangers ; while the beautiful harbor known as Toronto Bay is a constant scene of life and animation, an ever varying panorama of ferry boats, excursion steamers, yachts, row boats and canoes.

With all these attractions and advantages, and from its position on the north shore of Lake Ontario (one of the finest fresh water lakes in

the world) with a protecting background of pine clad hills, a beautiful climate and picturesque scenery, Toronto possesses undoubted claims as a natural and ideal summer and health resort.

As a place of residence Toronto offers many attractions. Chief among these we should mention its facilities for the enjoyment of outdoor sports. Very few cities of its size can boast of so many sporting, athletic, and aquatic organizations.

Among the many clubs centred in Toronto the most important is the Royal Canadian Yacht Club of international reputation. Its interests and the personnel of its membership are so identified with the best people of the city that a short sketch of the club's history will be in keeping with the nature of this work and will serve to indicate to some extent the possibilities of enjoyment in this summer city.

Royal Canadian Yacht Club.

The suitability of the Canadian lakes for this kind of sport cannot be better illustrated than by the fact that this comparatively new country possesses the largest yacht club in the world. The R.C.Y.C., of Toronto, enjoys this enviable distinction. It has a membership of 750.

The Club was organized in 1852 by a small but enthusiastic coterie of men, one or two of whom are still living to note the marvellous growth of their pet project. Prominent among those still living are Messrs. Wm. Armstrong, C.E., Charles W. Heath, Thomas Shortiss, honorary life members, and John Arnold; since deceased, Dr. Hodder, Major Magrath, John Leys and Capt. Fellows. It was first known as the Canadian Yacht Club, with its headquarters at Toronto. In August, 1854, it was authorized by Her Majesty to assume the style of "Royal," and in 1873 permission was given by the Admiralty to the Club to wear the blue ensign of Her Majesty's fleet with a crown in the fly.

In 1889 the Royal Canadian Yacht Club and the Toronto Yacht Club (the latter of which had been in existence since 1880) effected an amalgamation.

The R. C. Y. C. is at present very comfortably situated with regard to club equipment, the town quarters being situated on the water front opposite the Union Station.

Their Island house is a well equipped and commodious summer club. The site was chosen by the late Honorary Secretary, Mr. S. Bruce Harman, and Col. Grasset, the latter having been honorary Secretary previously for a number of years.

The lawn is one of the most beautiful to be seen in the city, and contains a tennis court, bowling and quoit grounds. Within the building is a comprehensive steward's department fully competent to cope with a yachtman's appetite—a first-class recommendation. The dining room and drawing room, reading and billiard rooms are neatly and comfortably furnished throughout.

Without, on the spacious balconies, is as delightful a place for a noonday or evening siesta with a quiet pipe, as could be desired.

Chief among previous Commodores we might mention the names of George Gooderham, and A. R. Boswell (lately retired), and who filled that office for a number of years; genial Thomas McGaw, of the Queen's Hotel, formerly Commodore of the Toronto Yacht Club, an office he held during the whole existence of that organization, was Vice-Commodore of the R.C.Y.C. after amalgamation. He was the owner of the *Cygnets*, then one of the finest boats in the fleet.

Capt. C. A. B. Brown, is a popular young man and one of the best sailors in the Club. Mr. S. Bruce Harman, late Honorary Secretary, has been an active member

of the Club since 1862. He has always taken the deepest interest in its welfare, and to his enthusiasm and energy the Club is much indebted.

Another old member still living is Col. Turnbull, Commandant at the School of Infantry, Quebec.

The present officers who have been yachting enthusiasts for many years, are: Emilius Jarvis, Commodore; J. H. Plummer, Vice-Commodore; George H. Gooderham, Rear-Commodore; F. J. R. Seaver, Honorary Secretary, late of the Royal Navy. Mr. J. Foot, the Secretary, is one of the Club's most indefatigable workers and has filled that onerous position for ten years.

The number of yachts represented by the Club at present is about sixty. Of these at least forty-five are first-class boats. The majority of them are owned in Toronto, though some belong to other lake ports.

The patrons of the R.C.Y.C. are H.R.H. the Prince of Wales, H.R.H. the Duke of Connaught, the Duke of York, who has lately consented to act in that capacity, and the Governor-General of Canada.

The R.C.Y.C. is socially an important body, comprising as it does many of the ablest and wealthiest men of the city. It has always been self sustaining. The ball of the Club is one of the features of Toronto's gay season; and garden parties, socials, etc., at the Island in summer, smoking concerts at the town club in winter complete the chain of sociability which extends over the whole year.

The frontispiece illustrates some of the notable yachts, and the present officers of the R.C.Y.C., including Capt. Jarvis and crew of the *Canada*, winner of the International Yacht Race against the American yacht *Vencedor*, in the fall of 1896.



Toronto University and Main Branches.

Education.

As a centre of education Toronto stands pre-eminent. Many of the brightest men and women of the day received their education in some of the many colleges for which this city is famous. University College, Wycliffe, Victoria, Trinity, Knox, Upper Canada, McMaster Hall, and many others have each contributed their quota of those who have distinguished themselves in the worlds of art, letters, law and science. In keeping with the home influences of the city are the ladies' colleges of which this city is justly proud. "Glen Mawr," Miss Veals' School, on Spadina Avenue, is a gratifying example of this class of educational institutions. This is but one of many inducements Toronto has to offer as a residential city.

"TEMPLE BUILDING."

THE Illustration on the opposite page represents the magnificent Temple at the corner of Richmond and Bay Streets, Toronto, which will be the home of the INDEPENDENT ORDER OF FORESTERS. The building has been erected under the special superintendence of Dr. Oronhyatekha, Supreme Chief Ranger of the Order, and will be, if not the best, certainly among the best and most complete of its kind in the Dominion. The erection of this handsome edifice was commenced in the spring of 1895, the corner-stone being laid by his Excellency the Earl of Aberdeen, Governor-General of Canada, on the 30th of May in that year.

The first two storeys are built of Credit Valley brown stone, and the remaining eight storeys of brownish red brick, trimmed throughout with Credit Valley and Connecticut brown stone. The whole structure is lined with, and the steel therein is protected by, fire-proof porous terra cotta of superior manufacture. As a matter of fact, the whole building will be as thoroughly fire-proof as modern science can make it, there being nothing to burn except the window-frames and sashes.

The building will contain two thoroughly fire-proof elevator shafts, in which will be three of the largest and finest elevators in the city, besides the stairs, which will be of steel, slate and marble.

The roof also, will be of absolutely fire-proof material, on which bonfires might be built without injury to it or the building.

There are four tiers of fire-proof vaults in the building, extending from the basement to the ninth story. To guard against any possible danger from fire, within or without, two standing water pipes have been placed in the building with steam pump to make pressure and hose connections on every floor.

The Temple will be heated by steam and lighted by electricity produced on the premises by the latest and most approved machinery. Ventilation has received special attention, and the sanitary arrangements are in every way up to date.

The Temple is intended as an office building, but a portion of it will be devoted to other purposes. A bank will occupy part of the main floor, while near it will be another large monetary institution, and a publishing house will occupy rooms on three floors. In the fourth and fifth stories of the western section will be magnificent Court Rooms and necessary adjuncts for Forensic and other society meetings. A magnificent assembly room will be immediately above these, occupying the sixth and seventh stories. The eighth story will be wholly occupied by the Supreme Court offices and staff. The ninth and tenth stories will be handsomely fitted up for the use of the Masonic fraternity, by which they will be occupied.

The Temple has been erected under the professional supervision of Mr. George W. Gouinlock, who has certainly succeeded in producing an excellently planned and ornate building, and so well proportioned that few would realize when looking at it that it is the highest building yet erected in Canada. As a matter of fact, it is 140 feet high, exclusive of the tower, which adds 45 feet, making a total height of 185 feet from sidewalk to the top of the tower. From the roof of this eminence an extensive view may be enjoyed of the city and surrounding country, and even Niagara Falls may be seen. The observation tower will be open to the public.

The building is most conveniently located, being only half a block from the new City Hall, less than 200 feet from the City Registry Office, a block distant from Osgoode Hall, and the same distance from several lines of electric cars.



[ASSESSMENT SYSTEM]

"TEMPLE BUILDING"

*Corner Richmond and Bay Streets, Toronto, Headquarters of the
Independent Order of Foresters.*

Commerce.

From a commercial standpoint Toronto ranks as the second city of the Dominion. The massive and solid appearance of its warehouses and factories testify to the permanent and prosperous character of the leading

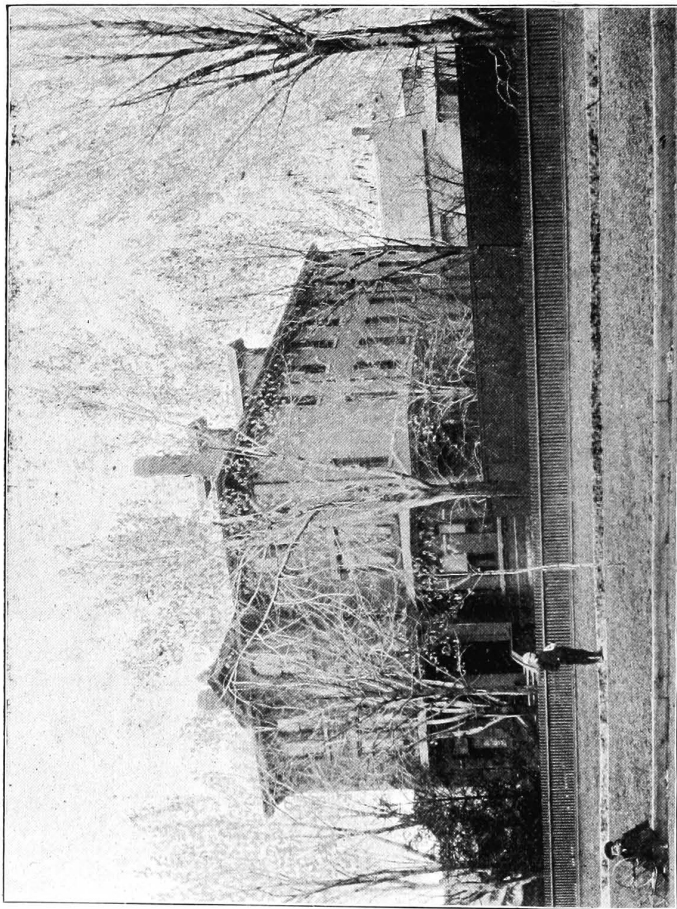


Photo by A. A. Gray & Co

Glen Mawr.

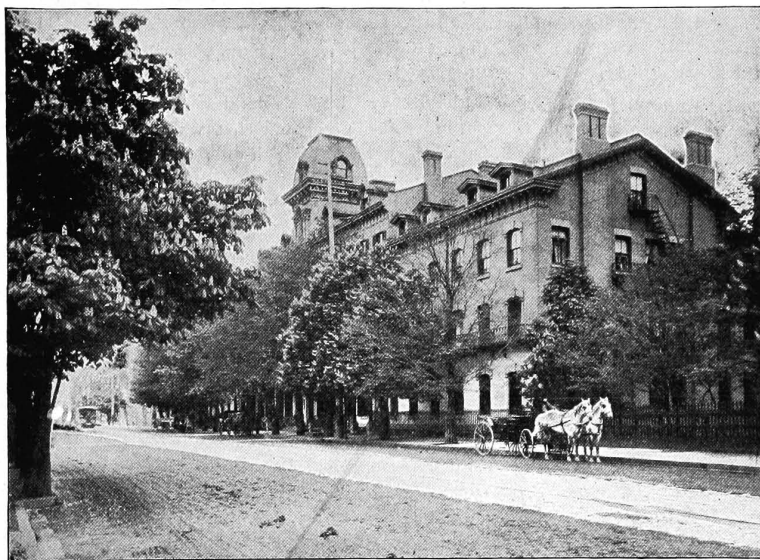
mercantile houses. Nor is evidence lacking of the city's progress in the matter of handsome office buildings ; as a notable instance of the latest addition to the city's buildings of this description we would mention the magnificent structure, recently erected, of the Independent Order of Foresters, a detailed account of which will be of special interest here.

Hotels, Boarding Houses and Restaurants.

In the matter of accommodation for visitors Toronto is extremely well provided. It does not boast of such palatial hotels as the Fifth Avenue, Astor's, and similar houses in large centres, but while the appointments and cuisine are all that could be desired, Toronto's principal hotels possess an air of home-like comfort, often lacking in more pretentious establishments.

THE QUEEN'S HOTEL.

To the traveller who has ever visited this city "The Queen's" of Toronto needs no recommendation, it is a household word : and not only



The Queen's.

to the thousands who have enjoyed its hospitality and the warm welcome of its popular proprietors, Messrs. Thomas McGaw and Henry Winnett, but to thousands in other lands where its reputation has gone abroad.

The Queen's is one of the largest Hotels in Canada and is the headquarters of members of the Royal Family, Governor-Generals and distinguished European and foreign visitors to this city. The hotel is only a few minutes' walk from the Union Station and steamboat wharf and while in the centre of the business part of the city is so situated as to command a full view of the bay and lake. The well kept grounds with handsome shade trees on either side add to the comfort of the house.

Mr. McGaw, who is an enthusiastic yachtsman and a former vice-

commodore of the R.C.Y.C. is very popular with members of that fraternity—reference is made elsewhere to his connection with that club. Mr. Winnett, his partner, is known far and wide for his indefatigable zeal in maintaining one of the finest summer resorts in America, the “Queen’s Royal,” Niagara-on-the-Lake.

THE ROSSIN HOUSE.

The names of certain hotels become inseparably identified with the cities to which they belong. The Fifth Avenue, the Hoffman, Astor’s and the Murray Hill are familiar to almost everybody as being among the famous hotels of New York ; Parker’s, the Revere House, the Vendome and the Quincy are identified with Boston ; Willard’s and the Arlington with Washington ; the Palmer House and Auditorium with Chicago ; the Tifts and Iroquois with Buffalo ; the Windsor and St. Lawrence with Montreal ; the Savoy, Langham, Cecil and Midland with London, and so we might continue almost indefinitely and find that with the name of every great city, the names of their leading hotels would be easily recalled.

If we speak of Toronto in this connection a name which is inevitably called to mind is the Rossin House.

Among its distinguished patrons might be mentioned the Prince of Wales, Duke of Edinburgh, Prince Leopold, and also two ex-Presidents of the United States, and it has sheltered queens of song, statesmen, generals, eminent divines and the distinguished and influential people of all lands.

Although many years have elapsed since the completion of the Rossin House, its original plan was on such a grand scale, and so comprehensive and admirable in every particular, that with the subsequent addition of every modern improvement it is not excelled in any essential feature by any of the newer built houses of the country. The structure is five stories high above the basement and with its commanding frontages on King and York Streets, is one of the most prominent and attractive buildings in Toronto. It is but two blocks from the Union Depot, convenient to boat landings and within easy distance of all leading objects of interest.

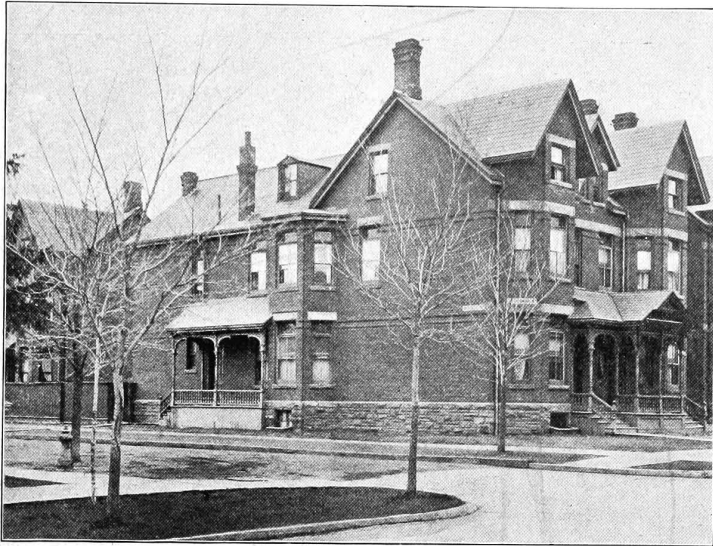
The interior arrangement of the house could not be bettered. Its spacious office, reading rooms, corridors broad enough almost for dancing purposes, superbly furnished public parlors, its grand dining room and all public apartments, bear out the impression of “roominess” and elegance which pervades the entire house, while the several hundred guests’ rooms, arranged single and en suite are all large, light, airy and luxuriously furnished.

The Rossin House has always been fortunate in having been under a broad-gauge, liberal and capable management. Its present proprietor, Mr. A. Nelson, is a hotel man of long and active experience, under

whose direction the Rossin is conducted with a single eye to the comfort and convenience of its guests and the maintenance of its long established prestige.

The table of the Rossin is as good as the best, and the service all that the most exacting could demand.

Besides the Queen's and Rossin House, Toronto's two leading hotels, the visitor will find every comfort at such well-known houses as The Walker, Arlington, Palmer, Elliott, etc.



Mrs. Duckworth's.

Photo by A. A. Gray & Co.

Private Boarding Houses.

There are many who, accustomed to the quiet seclusion of their homes, prefer the privacy of a first-class boarding house to the bustle of hotel life. Especially is this the case with ladies. It is difficult to select such establishments as these from the long list of boarding houses in any city. For the benefit of our readers we will describe a few of the best which will suit the most fastidious.

They are situated in the best sections of the city and are undistinguishable from the neighboring private residences and mansions.

MRS. DUCKWORTH'S.

St. George Street is one of the most fashionable thoroughfares of Toronto. At Nos. 48 and 50 is Mrs. Duckworth's, the home of many of

Toronto's best families, and during the summer, the headquarters of wealthy American tourists. It is a handsome residence, well furnished with private parlors for families, and faces the entrance to Queen's Park, leading directly to Parliament Buildings, University Buildings and many other places of interest. It is convenient to all parts of the city by the College St. and Belt Line cars, close by. There is accommodation for thirty guests; the rates are \$1.00 to \$1.50 per day.

St. George Street with its asphalt roadway and boulevards lined with shade trees is very popular with bicyclists.

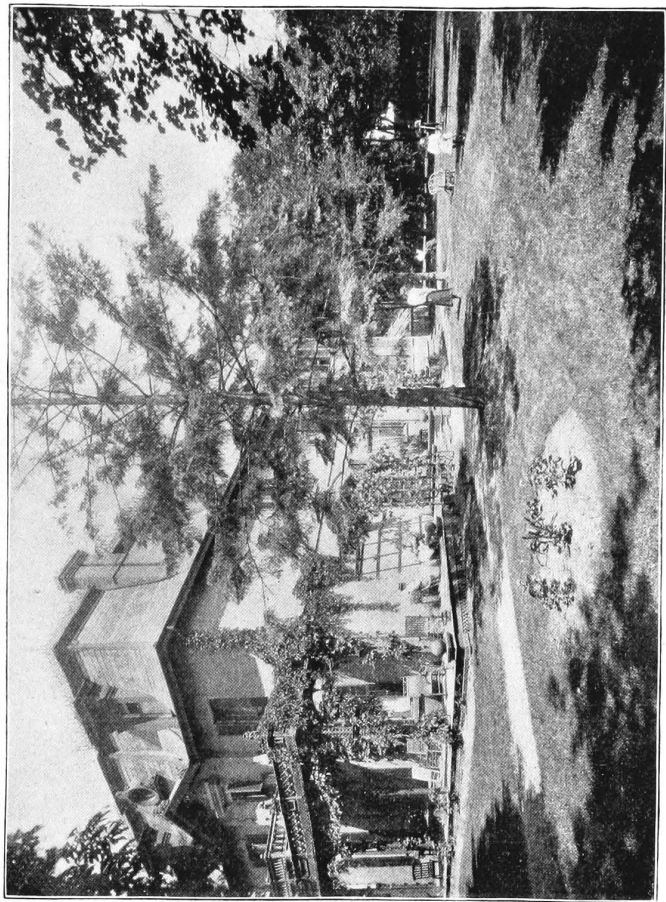


Cedarhurst.

Photo by A. A. Gray & Co.

CEDARHURST.

Jarvis Street is Toronto's premier residential thoroughfare; on it are the mansions of wealthy merchants, professional men and retired capitalists. The wide asphalted roadway, paved sidewalks and well trimmed boulevards lined with avenues of forest trees, make it popular alike with the wheelman and pedestrian. It is the Mayfair of Toronto. "Cedarhurst," at 581 Jarvis near Bloor Street and the Belt Line cars, is one of the mansions of Jarvis Street. The house itself stands back from the street in extensive grounds, shaded by lofty trees. In front is a spacious tennis lawn, encircled by fragrant balsams, cedars and shrubbery, and skirted by a carriage drive; in the rear is a fine stable. The house is well furnished, has fine drawing and dining rooms and verandahs and



Fryer House.

will accommodate thirty guests. The rates are moderate, \$1.00 to \$1.50 per day ; \$6.00 and upwards per week. For further information apply to " Cedarhurst," 581 Jarvis Street.

FREWEN HOUSE.

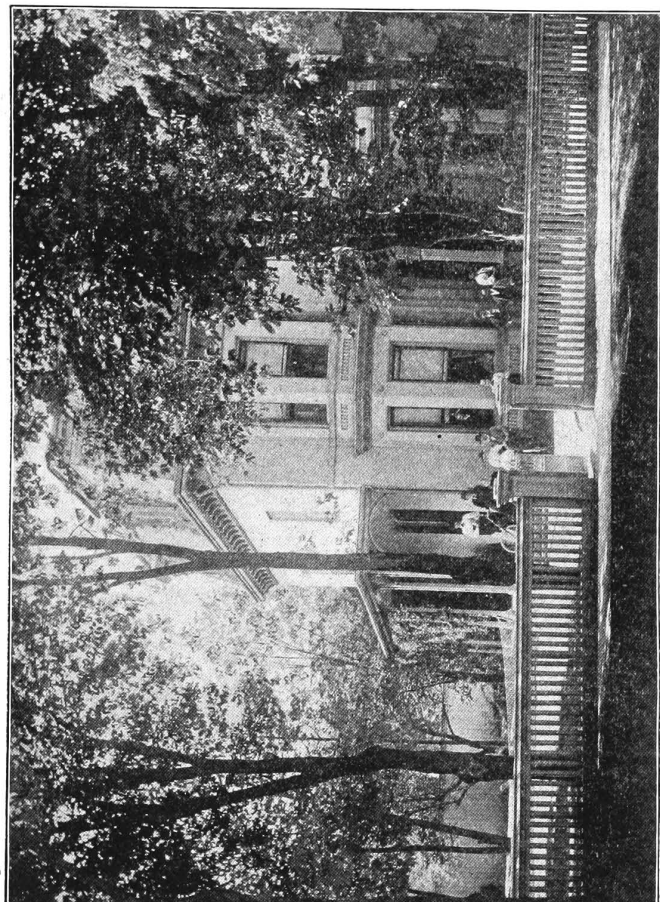
This house, as may be gathered from the illustration, was once the home of one of Toronto's leading citizens. It is built in one of the most charming localities of the city, in Queen's Park, opposite the Parliament Buildings and close to the College Street cars. The house is furnished with the luxury of the most modern city mansions, with cosy reception rooms, airy bedrooms and is elegant in all appointments. The menu is first-class. Surrounding the house are spacious lawns, fine old shade trees and beautiful flower beds throughout the extensive grounds. The wide verandahs, festooned with trailing vines, afford shady lounging places for afternoon siestas. The house will accommodate twenty-five guests, and the rates are from \$1.50 per day. Visitors to the city will do well to communicate with Mrs. Lawlor, or the Misses Dartnell, Frewen House, 7 Queen's Park.

GLEEHOLM.

This fine residence at 254 Jarvis Street is another of the mansions available for those wishing to live *en pension*. It is a handsome structure, flanked by a well kept tennis lawn, shaded by spreading chestnut and maple trees. The drawing room, dining room and bed rooms are large, lofty and well furnished. The bedrooms are single and double and can be fitted up as parlor bedrooms when required. The wide verandah at the side of the house is a prominent feature of this house. Adjoining the grounds to the south is a handsome residence, No. 250 Jarvis, which has been acquired for the purpose of accommodating the increasing number of guests of this popular establishment. There is accommodation altogether for fifty guests. The rates are \$1.00 to \$1.50 per day and \$5.00 to \$8.00 per week. The proprietress is Mrs. Dick, who enjoys the patronage of several wealthy families from various parts of the Southern States. Gleeholm is close to the Horticultural Gardens and principal street car lines.

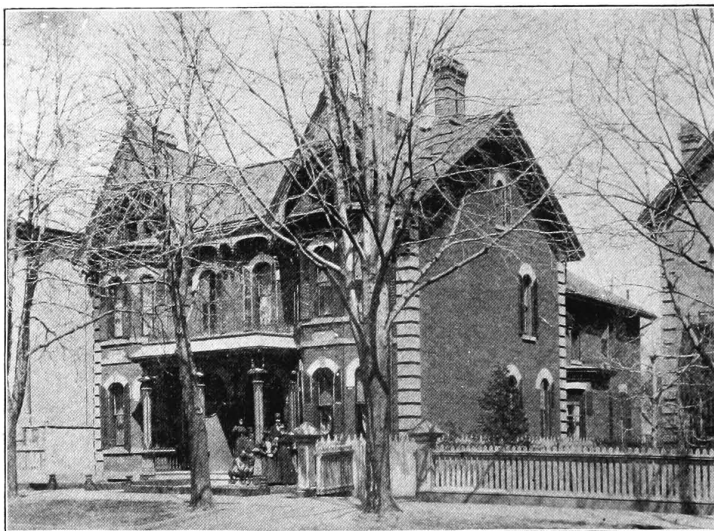
MRS. CARROLL'S.

This bijou residence at 421 Jarvis Street, is most conveniently situated. It is but a few steps to the Carlton Street and principal car lines, the Horticultural Gardens, leading churches, etc., and is in the centre of the residential neighborhood of this part of the city. The house is an extremely pretty structure ; the rooms are well furnished and the table is supplied with everything of the best. Mrs. Carroll who



Gleeholm.

personally superintends the management of the household is very popular with her guests. The rates are \$1.00 per day ; \$5.00 to \$6.00 per week. There is accommodation for twenty people.



Mrs. Carroll's.

Photo by A. A. Gray & Co.

Restaurants.

Toronto can boast of the best equipped restaurants in Canada, chief among them being Harry Webb's, a popular lunch and dining rendezvous of merchants and visitors to the city, and Nasmith's, the business men's lunch room and restaurant whose four branch establishments in the city's centre are crowded daily. McConkey's is a favorite headquarters for ladies and theatre parties.

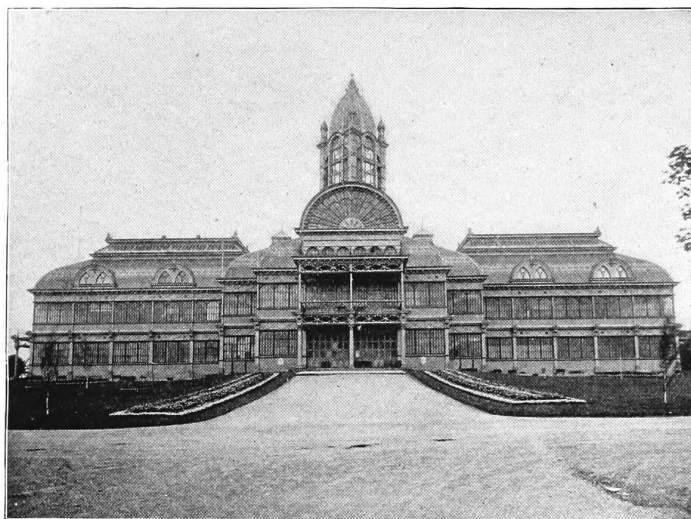
Toronto Industrial Exhibition.

An event of more than usual importance this year, and of widespread interest, will be "Canada's Great Victorian Era Exposition." That the Queen's Diamond Jubilee will be commemorated in a fitting manner on this occasion, all who know the indefatigable energy and ambition of the experienced manager and secretary, Mr. H. J. Hill, may be assured. Extensive improvements and additions are being made to the grounds and buildings, and nothing will be left undone to ensure perfect success. Excursions will be run from all parts of Canada and the States, and cheap rates will rule on all Canadian railways. The Exhibition will extend from August 30th to September 11th.

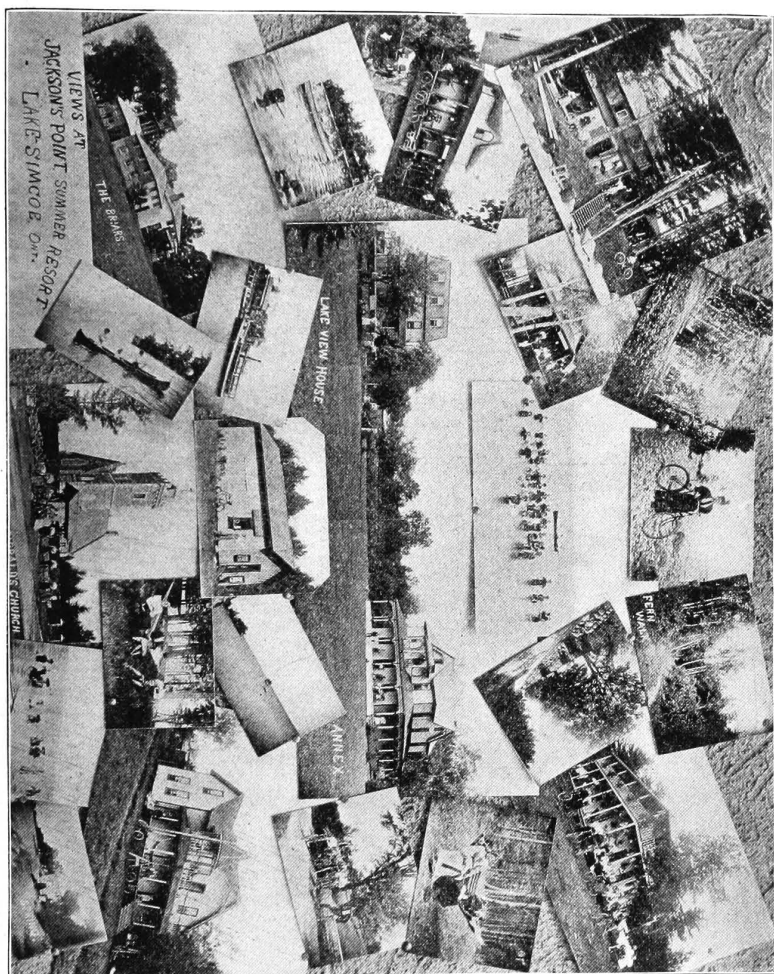
List of Leading Toronto Hotels and Boarding Houses.

Hotel and Name of Proprietor or Manager.	Rooms.	Rates.	
		Per Day.	Per Week.
Queen's McGaw & Wisnietz	400	\$3.00 to \$5.00	
Rossin House A. Nelson	400	2.50 to 4.00	Special.
Arlington	200	2.00 to 3.00	"
Walker House David Walker	200	2.00 to 2.50	
Palmer House (American Plan) J. Palmer	200	2.00	\$8.00 to \$10.50
Kensington House (European Plan) J. C. Palmer	150	0.50 to 1.00	
St. Lawrence J. W. Hirst	100	2.00	Special.
St. George View J. H. Ayre	100	1.50 to 2.00	8.00 to \$10.00
Albion John Holderness	175	1.00 to 1.50	5.00 to 7.00
Commercial Meagher & Peacock		1.00	Classified.
Richardson House S. Richardson	100	1.50	
Rosedale John Elliott	50	1.00 to 1.50	Special.
Hotel Hanlan, Hanlan's Point, Toronto			
Island M. A. Thomas	100	2.00 to 3.00	10.00 to 18.00
Mead's Hotel, Island Park, Toronto			
Island Mrs. Mead	100	1.50 to 2.50	7.00 to 12.00

Boarding House and Name of Proprietor.	Rooms.	Rates.	
		Per Day.	Per Week.
Frewen House, 7 Queen's Park Mrs. Lawlor	25	\$1.50 and up'ds	Special.
Mrs. Duckworth's, 50 St. George Street			
Mrs. Duckworth	30	1.00 to 1.50	"
Cedarhurst, 581 Jarvis Street Mrs. Dick	30	1.50	\$6.00 and up'ds
Gleeholm, 251 Jarvis Street Mrs. Dick	50	1.00 to 1.50	5.00 to \$8.00
Mrs. Carroll's, 421 Jarvis Street Mrs. Carroll	20	1.00	5.00 to 6.00
Pictoria, 55 Gould Street Mrs. Bongard	50	1.00 and up'ds	Special.
Victoria Villa, 218 John Street Mrs. B. Brown	40	1.50 to \$2.00	\$10.00



Crystal Palace, or Main Building, Industrial Exhibition.



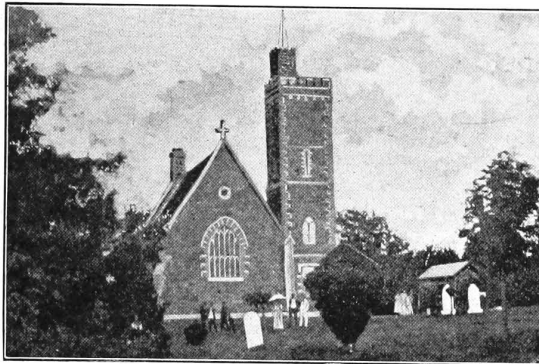
Views at Jackson's Point and Sutton West.

Jackson's Point and Sutton West.

Fifty-five miles due north of Toronto on the south shore of Lake Simcoe lies the summer colony known as Jackson's Point. For those residing or visiting in Toronto this is the most easy of access of any of our adjacent resorts, as will be seen from the following train service :

Leave Toronto at 4.35 p.m., arrive at Jackson's Point about 7 p.m.; leave Jackson's Point at 7.15 a.m., arrive at Toronto 10 a.m. Special Saturday Express leaves Toronto 1.35 p.m., arriving at Jackson's Point at 3.35 p.m., only a two hour's journey. The convenience of this service is greatly appreciated by Toronto business men whose families spend their summers in the many pretty cottages at this charming place.

For bicyclists the surrounding country is a paradise in which to revel. The hard level roads make wheeling as pleasurable as on city



Sibbald's Church, Jackson's Point.

asphalt, with the additional charm of green fields, leafy avenues of trees, and trim hedgerows, resembling nothing so much as the green country lanes of Old England, but, let us add, minus the ruts. In fact, for cycling, driving or walking these roads are not surpassed in Canada. They are good all the way from Toronto, and many wheelmen think nothing of this trip for a day's outing.

The tourist rates are exceptionally favorable for this resort, as Jackson's Point is counted within the fifty-mile radius from Toronto, entitling families residing there to purchase commutation tickets, averaging fifty cents single trips.

Of all Ontario's large lakes, Simcoe is the highest, being 474 feet above Lake Ontario, and 708 feet above sea level. It is about thirty miles wide from north to south, and about twenty miles from east to west.

At this healthy altitude the mid summer heat is always tempered by cool breezes sweeping over this broad expanse of waters. Jackson's Point differs from many northern lake resorts. Its beauty is sylvan rather than rugged. The district was settled many years ago by some of the better classes from the Old Land, and the high state of cultivation of the surrounding country, the level roads, and trim dwellings, hedges and gardens, bear testimony to the taste and industry of the inhabitants. Instead of dense forest growths, we find cool shady groves, carpeted with greensward, leafy lanes, waving fields and level lawns and playgrounds.

~~The attractions of this charming resort are numerous.~~

The bathing facilities are simply perfect, a wide sandy beach, gently sloping, with no holes, render this healthful pastime safe for the most timid or inexperienced. Boating and fishing are favorite sports; the



The Beach on a Calm Day.

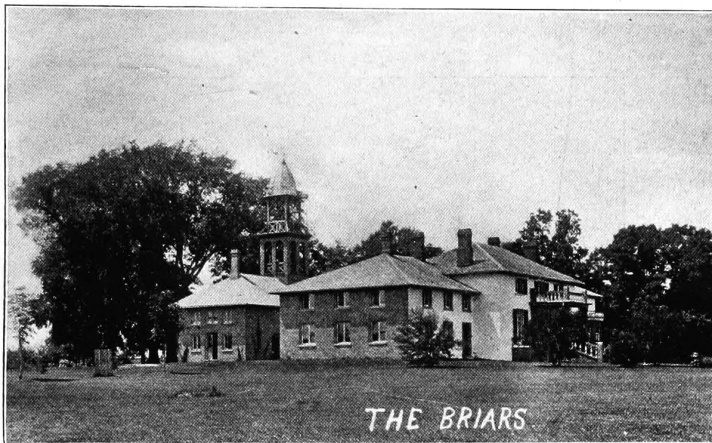
fishing is good, consisting of salmon trout, maskalonge, white fish and black bass, while the usual accompaniment of mosquitoes is happily absent. Wheeling on the hard gravel roads is, of course, a prominent feature among the amusements enjoyed here.

Jackson's Point is but one and-a-half miles from the village of Sutton West, with which it is incorporated. This neighborhood is recommended highly by physicians for pure climate and water, and good drainage.

Among the many places of interest easily reached from the "Point" are: Georgina Island, a large island eleven miles in circumference, four miles distant, with an Indian encampment and good farms on it; Snake and Fox Islands, five and six miles distant respectively.

Travelling from Sutton West by the road which skirts the lake shore, in an easterly direction, between well-trimmed green cedar hedges, neat

stone fences and avenues of trees, the traveller's attention is arrested by what appears to be the country seat of some English squire ; a picturesque rambling mansion of red brick stands in full view from the road, surrounded by a wide green lawn, dotted with clumps and groves of cedar ; towering over all are giant forest pines, and cedar hedges enclose the entire grounds of this beautiful place. This is "The Briars," the residence of Dr. F. C. Sibbald, who is a public benefactor in this little settlement, and to whom the people are indebted for many of the pretty hedges and groves in the neighborhood, and to the picturesque English Church which is reached further east on this road.



"The Briars," Residence of Dr. F. C. Sibbald, Sutton West.

ACCOMMODATION FOR TOURISTS.

There is no lack of accommodation for tourists at Jackson's Point, and we will enumerate some of the principal houses of entertainment :

LAKE VIEW HOUSE, with a handsome annex, five minutes walk from the station, is the popular summer hotel at the Point. It is beautifully situated facing the lake. On the lawn in front of the house, which is about three acres in extent, bowling, tennis and other amusements are indulged in. The bathing beach is perfect. Boating and fishing are very popular at this resort. A steam launch can be obtained for fishing and excursion parties at any time. The rates are \$6.00 per week, adults ; \$3.00 per week, children. For full particulars address W. B. Sanders, Stouffville, up to June 15th ; after that date, address Sutton West, Ont. This hotel, which is the only one at the Point, is always crowded, and it is surprising that more accommodation of this nature does not exist.

No better site for this purpose could be found than one very picturesque spot on the property of Mr. D. W. McDonald, one of Sutton's most enterprising citizens. This is a commanding bluff overlooking the lake at Jackson's Point, on which is a natural cedar grove well underbushes and with winding paths under the shady trees, where the loiterer is fanned by the cool resinous laden breezes, while the plash of the waves rises musically from the beach below. On this height of land the air is always bracing. Below to landward are level fields where games of all sorts are indulged in.

Perhaps it is that the camp and cottage are such favorite methods of summering here, for when one considers that the population of this village increases from its normal few hundred to nearly 3,000 in the summer

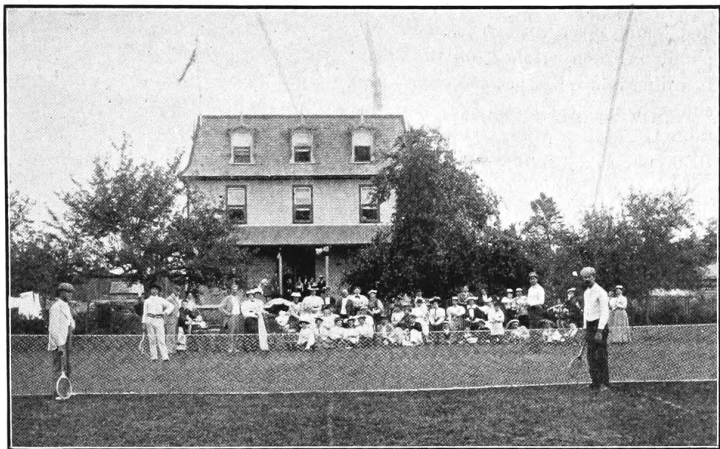


The Beach in Front of Lake View House, Jackson's Point.

season, one can understand how popular cottage life is at the Point where only one hotel exists.

We will now mention some of the many boarding houses available for guests :

POPLAR HOUSE.—This is a very comfortable house with well furnished rooms, airy and well lighted, comfortable parlor and dining rooms. There are large double bedrooms for parties and families. The table is supplied with fresh vegetables from the proprietor's own garden; also fresh milk and cream, and good farm butter ; an excellent table is kept. Poplar House is but three minutes' walk from the lake front, and but a short distance from the station. There are good boat houses, bathing houses and boats in connection with the house, with a diving wharf for expert swimmers. This house will accommodate eighteen guests. The rates are \$5.00 to \$6.00 per week. The proprietor is Robert Moore. Address, Sutton West.



Lake View House, Jackson's Point.



Annex—Lake View House, Jackson's Point.

ALBERT MOSSINGTON'S.—One and-a-half miles from Jackson's Point station stands a little colony consisting of a large private boarding house and three cottages, somewhat removed, therefore, from the more populous colony of Jackson's Point proper; this is Mossington's. The boarding house has accommodation for twenty guests, and faces the lake shore, being situated on the road, a few steps from the lake itself. The table is supplied with farm produce, milk, butter, eggs, etc. The rates are \$1.00 per day. A few steps from this boarding house are three pretty cottages, well lined and plastered, and comfortably furnished. These stand in their own grounds with neat fences dividing them from the road. They contain approximately six to eight rooms, and may be rented



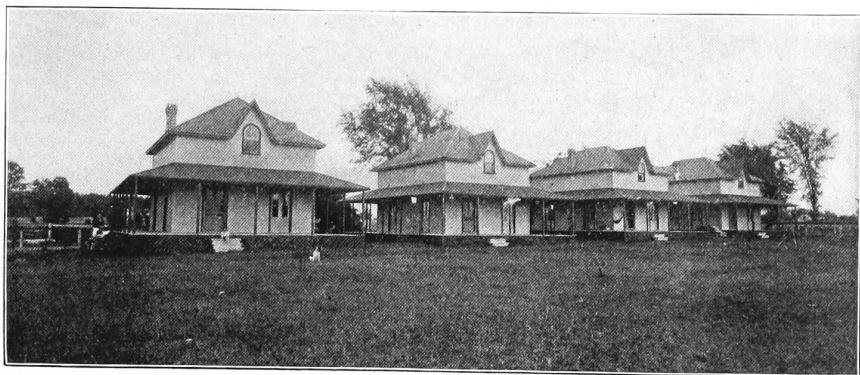
"Glen Sibbald," Jackson's Point.

for from \$50 to \$60 for the season. The pretty Black River, upon the banks of which is a fine pine grove, flows past this property. Address, Albert Mossington, Sutton West.

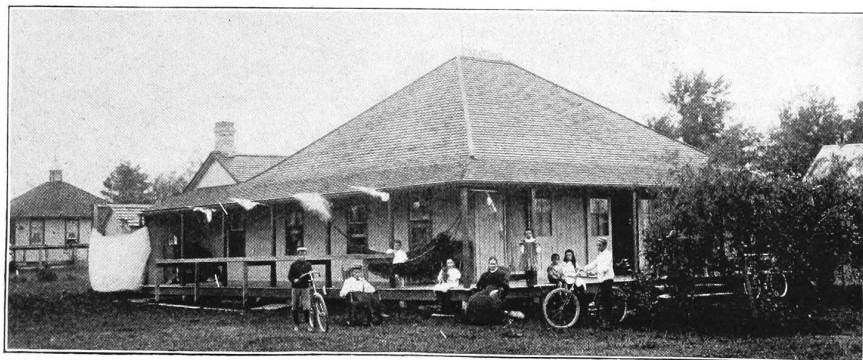
DUCLOE'S POINT.—This is a favorite camping ground of 300 acres on the lake shore and six miles from Sutton West. The great attraction here is the splendid bass fishing on the shoals off the shore. There is a comfortable cottage for rent, and good board can be obtained at the farm house on the property. The rates at this house are very reasonable, \$4.00 to \$5.00 per week, including washing. Boats can be hired for fishing, etc., and the roads are splendid for driving and wheeling. The proprietor is Duncan H. McRae. Address, Virginia P.O.

Springwood and Glen Sibbald are two of the finest boarding houses at the Point, they are but a short distance west on the lake shore road.

COTTAGES FOR RENT AT JACKSON'S POINT.



Cottages of John Hally, of Toronto.



Summer Residence of John Hally, of Toronto.

COTTAGES.

Cottage life is the predominant characteristic of this colony, and information on this point will be of special interest to the tourist. We will mention a few prominent proprietors of good summer cottages.

We will notice first a row of eight pretty cottages near the lake. They are well furnished and fresh painted in various bright colors. There is a large play ground of level sward connected with these cottages and a fine cedar grove. Each cottage contains five rooms, with detached kitchens. They may be rented for \$40 to \$50 for the season. These are owned by D. W. McDonald, Sutton West, who has some of the choicest property in this section for sale.

Two hundred yards from Jackson's Point station, on the lake shore, is a row of six cottages, well furnished throughout, ready for occupation.



Cottage of J. W. Lawrence, of Toronto.

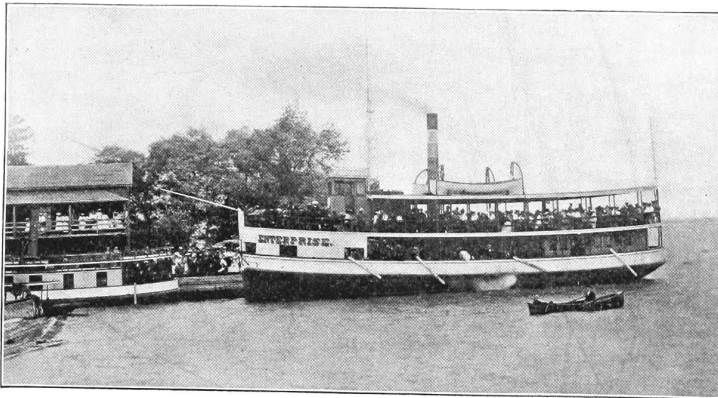
These contain six to eight rooms and have besides well drained cellars. A well of pure water supplies the guests with that most necessary fluid ; it is located close to the cottages. There are good baseball grounds and tennis courts adjoining, and a favorite indoor American amusement is provided for rainy weather, known as "Shuffleboard." Boats can be hired for boating and fishing. These cottages rent for \$60 to \$75 per annum. The proprietor is Mr. John Hally, 38 Yonge street, Toronto. This gentleman has also some very choice lots for sale in the vicinity.

RAVENSWOOD PARK.—This fine property consists of fifteen acres, five acres of which comprise a natural cedar grove on the lake shore, the remainder is surveyed into building lots of commodious size for those wishing choice building sites. The park contains several summer cottages, which can be rented at moderate rentals. Ravenswood

Park is situated one mile from the village ; the park is reserved for the exclusive use of tourists and cottage owners. This is one of the choicest properties in the neighborhood and is owned by Major J. R. Stevenson, of Sutton West.

The accompanying illustrations will give the reader a good idea of the style of cottages at Jackson's Point, and we will briefly mention one other group, owned by Mr. J. W. Lawrence, of Toronto. This consists of four handsome buildings, almost new, with large verandahs. They contain six rooms, are well furnished and are in good condition. The situation of these cottages is most beautiful ; in front is a sloping sandy beach, safe for children. There are good boats and boathouses. They are but five minutes walk from the station. The rental is \$60 for the season. These cottages are also for sale. Address, care Messrs. John Macdonald & Co.

Perhaps the best situated and finest property available for building lots at Jackson's Point is that owned by Mr. Jas. Anderson, of Sutton



Steamer "Enterprise" at Jackson's Point Dock.

West. This is on the lake shore within five minutes walk of the railroad station and steamboat wharf, and about a mile from Sutton West Post Office. The lots are of good size and may be purchased at from \$100 to \$200, according to their location. Full particulars of this valuable property can be obtained from Mr. Anderson, or Mr. F. G. Tremayne, at Sutton West.

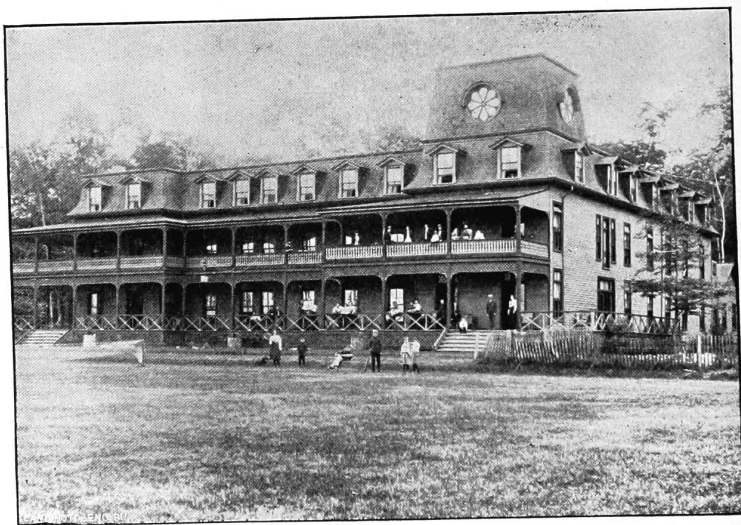
EXCURSION TRIPS.

The steamer *Enterprise*, one of the largest boats on Lake Simcoe, sails every Saturday from Jackson's Point to Barrie, calling at Peninsular Park. This is a two hours' trip ; leaving the Point at 9.30 a.m., arriving

in Barrie at 11.30; returning leaves Barrie at 4 p.m., arriving at the Point at 6 p.m. This boat and the *Islay* are available for excursion parties to all points on the lake.

SUTTON WEST.

Sutton West, which is the town end—of which Jackson's Point is the lake end—of this village, is a pretty little place on a picturesque and serpentine stream, which rises fourteen miles away at Mount Albert and empties into Lake Simcoe. The boating on this river is very enjoyable. Sutton boasts of some enterprising merchants who realize the requirements of the large number of tourists and cottagers who annually reside at the Point, and are very prompt in catering to their many wants. A good list of the leading dealers in tourists' supplies will be found in the Sutton West business directory at the end of this book.



Peninsular Park Hotel, at Big Bay Point.

The Northern Lakes of Ontario.

ON THE N. & N.W. DIVISION OF THE G.T.R.

Many of the prettiest towns and best fishing, hunting and summer resorts are situated in the northern district reached by this line. **BARRIE**, sixty-four miles north, and the first place of importance in this respect is a charming town of over 6,000 inhabitants, on the west shore of beautiful Lake Simcoe; it has good hotels, fine stores, churches and schools, and is headquarters for the well-known

PENINSULAR PARK HOTEL AT BIG BAY POINT

This popular hotel is beautifully situated within forty minutes' sail from Barrie. The hotel steamers meet all trains at this town and convey guests direct to the hotel; these fine boats are also available for the exclusive use of guests for excursions. Peninsular Park Hotel, which was erected at a cost of \$50,000, is a fine structure, fitted with all modern improvements, electric lighted and handsomely furnished throughout. The surrounding grounds, forty acres in extent, are very picturesque, and the roads level and specially suitable for bicycling and driving.

There are extensive lawns for tennis, croquet, bowling, etc.; fine bowling alleys, and every facility for the best boating, bathing and fishing. The menu is excellent. Terms at this hotel are \$2.00 per day; \$8.00 to \$12.00 per week; special rates for families. Address, M. McConnell, 46 Colborne Street, Toronto; or, the Manager Peninsular Park Hotel, Lake Simcoe, Ont. The hotel is open for guests June 15th.

Forty miles north-west from Barrie, or 100 miles (a four hours' journey) from Toronto is one of the finest Summer Resorts in Canada. We refer to

THE PENETANGUISHENE, CANADA'S GREAT SUMMER HOTEL

This resort, situated on the harbour of the same name, is reached by the N. W. Division of the G.T.R. The harbour, five miles long by one-third of a mile wide, is the fountain head of the famous 30,000 islands of the Georgian Bay. The hotel itself, which is termed the Ponce-de-Leon of Canada, is a handsome structure facing the harbour, situated in a picturesque park of fifteen acres, and is liberal in all its appointments. The sanitary arrangements are entirely new, and highly approved by experts. The house is steam heated throughout for the better comfort of guests in damp or chilly weather. House and grounds are electric lighted. The fishing—black bass, maskalonge, and pickerel—boating

and bathing, are of the very best. The social Saturday evening hops, with the accompaniment of Prof. Jennings' orchestra, are a special feature of this resort. Terms : \$2.00 per day and upwards ; \$10.00 per week and upwards ; special rates for families. Intending tourists should write for the handsome booklet issued by the hotel, to Mr. James K. Paisley, the Manager. Address up to June 1st at G.T.Ry. office, corner of King and Yonge Streets, Toronto ; after which address Penetanguishene, Ont. The hotel opens June 15th.



The Penetanguishene.

PARRY SOUND TRIP.

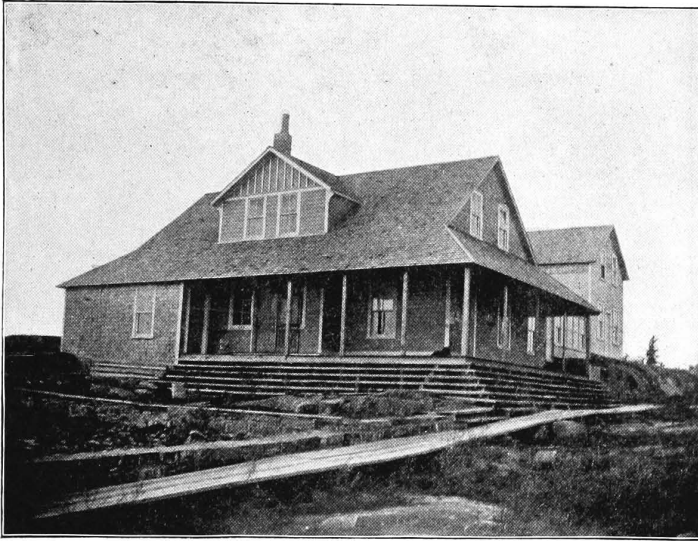
From Penetang to Parry Sound, sixty-six miles distant, along the east coast of Georgian Bay, is a most delightful and romantic trip. Taking the steamer *City of Toronto*, of the North Shore Navigation Company, the journey commences through the 10,000 Islands of the Parry Sound Archipelago, amidst scenes of variety and matchless beauty. The entire journey being made through the inside channel ensures at all times a safe and enjoyable trip. After passing Muskoka Mills, at the mouth of the Muskoka River, Moose Deer Point and Moon River, we arrive at

SANS SOUCI, MOON RIVER DISTRICT

The name at once suggests the atmosphere which pervades this romantic spot. Casting off dull care one may revel in the many delights which this spot and its surroundings offer. Sans Souci is an island of

400 to 500 acres. It is an angler's paradise; the fishing is unsurpassed in the many neighboring streams, rivers and channels. Black bass three to five pounds and salmon trout up forty and fifty pounds can be caught here. Deer and ducks are also plentiful. Moon River twelve miles distant, Blackstone Harbour ten miles, Blackstone Lake four miles further on, and Clear and Spider Lakes five miles only from Sans Souci, are among the many alluring spots for fishing and hunting.

There is a very picturesque hotel here, under the proprietorship of Capt. Pearce; there is accommodation for fifty guests. Terms, \$1.50 per day. A steam launch is always ready for fishing and excursion parties to different points. There is a large cottage for extra accommodation



Sans Souci, Moon River District.

of guests, and suitable building lots for cottages can be purchased from the proprietor. Address, J. Pearce, Moon River, P.O., via Midland, Ont.

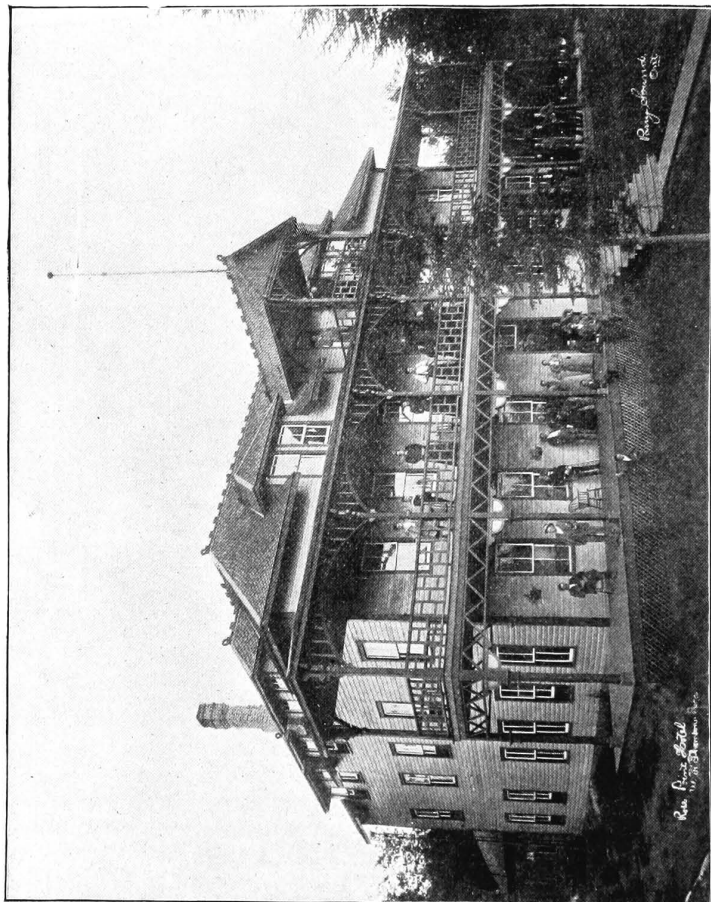
Sixteen miles further north, after passing through the South Channel between the mainland and Parry Island (an Indian Reservation) we arrive at

ROSE POINT

Besides being an important stopping place on this steamboat trip, Rose Point is the terminus (for tourist purposes) of the Ottawa, Arnprior & Parry Sound Railway.

Situated on a gentle slope, in an amphitheatre of rocky, pine-clad

bluffs, on a point of the mainland stretching out among numerous islands, and facing the bold outlines of Parry Island ; with the beautiful waters of the bay sheltered by surrounding hills and islands rendering boating and bathing safe and pleasant pastimes, this is indeed an ideal



Rose Point Hotel.

resort. The hotel itself is new, and fitted with all modern conveniences, and contains ladies' and gentlemen's reading rooms, smoking rooms, etc. ; the sanitary arrangements are excellent, bath rooms and lavatories, with hot and cold water, are of the latest devices and construction ; the bedrooms are lofty and well furnished, and arranged en suite for families ;

the table is good, and supplied with everything of the best in season ; the house is electric lighted, and has telephone communication ; there is also a daily mail and boat and train service. The hotel has its own water supply from the pure waters of the bay, operated by a pumping plant, with water tank at the summit of a neighboring bluff. From the wide double balconies a splendid view is obtained of the islands and surrounding scenery. A good supply of boats, canoes and sailing craft is kept in the fine boat house near the hotel, and a fine steam yacht, the *Curlton*, is in commission for the use of guests. The hotel, which is but a few minutes' walk from the new O.A. & P.S. Ry. station, is also reached by a good road, which winds its devious way by huge hills and through dense forest to Parry Sound. There are numerous pretty walks and drives in the vicinity, and the proprietor, Mr. W. F. Thomson, keeps a convey-



Catch of Black Bass, at Rose Point (average weight, 2-4 lbs.).

ance specially for the use of guests desiring to visit surrounding points and the numerous inland lakes, many of which are but one hour's drive from the hotel, and are well stocked with speckled trout and black bass.

The hunting—deer, bear, partridge, duck, etc., is excellent in the neighborhood, and the steam yacht and buggy before mentioned are in frequent demand for the conveyance of hunting and fishing parties in summer and fall. Indian guides can easily be obtained for fishing and hunting parties.

A pleasant feature of this resort is the excellent sandy beach close to the hotel, affording safe bathing for ladies and children. The post office address for this resort is Parry Sound. There is accommodation for seventy-five guests at the hotel.

One-and-a-half miles to the north and the journey's end is reached.

BELVIDERE HOTEL, PARRY SOUND

This is a handsome structure situated upon an eminence 120 feet above Georgian Bay, and commanding a view both picturesque and grand. To the west the rugged coast line with deep bays and wooded shores, with the ship channel stretching away into the distance; to the north hundreds of acres of dense forest with a background of blue hills; to the south, the south channel with a vista of island after island, verdure clad, of inexhaustible variety, and harboring deer, bears, foxes and other animals; to the east and behind the hotel nestles the pretty little town of Parry Sound, and only five minutes' walk from this romantic spot; but so secluded is the place that the town itself and all civilization might be 100 miles distant, for here we are in the solitude of a great

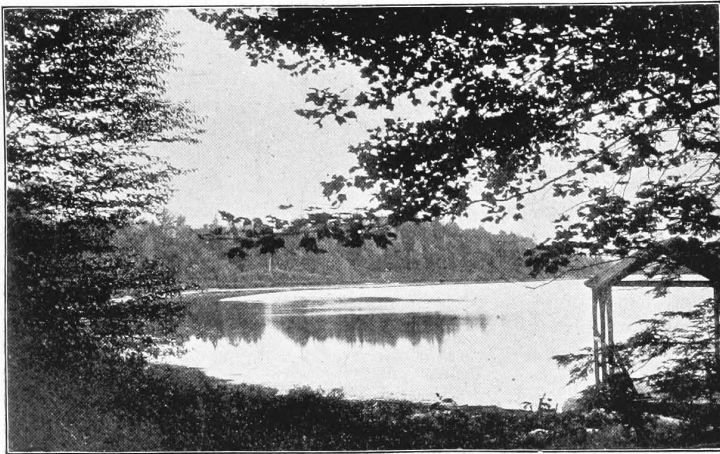


Belvidere Hotel, Parry Sound.

forest, of calm waters, the solitude of nature. Descend the hill to the north and enter the leafy glades of the beautiful Minnewawa Park and you will find yourself in a tract of primeval forest reclaimed from its native wildness but with its natural beauty untouched; this park, hundreds of acres in extent, has been reserved for the guests of the hotel, and nowhere else in America is such wild beauty of scenery to be enjoyed in such perfect comfort. The park is full of romantic beauty, shady arching avenues and drives have been cut through its thick forest growth leading unexpectedly to miniature lakes well stocked with fish, and at times skirting the edge of the bay itself. The grounds around the hotel are laid out with groves of young beech and maple. Tennis, croquet, golf and other pastimes are among the features of this resort,

and for indoor amusement the fine bowling alley will be found a welcome diversion. Boating of all kinds is of course a great attraction ; row boats, sail boats, canoes, steam yachts, and all kinds of craft can be obtained. The fishing and hunting is all that can be desired ; black bass, pickerel, pike and maskalonge being plentiful, and out in the lake white-fish and lake trout are abundant. In the fall, deer, bear and fox hunting, and partridge and duck shooting are the favorite sports ; skilful and experienced Indian guides are always to be had for hunting parties. In the bay, in front of the hotel, are numerous natural pools, partially landlocked, rendering bathing safe and enjoyable.

Hay fever is an unknown thing in this high and bracing region, the most severe cases being cured in a few days, the invigorating pine scented



Lake Ewayea, Minnewawa Park.

air acting as a marvellous tonic and restorer. The hotel itself is first-class in every respect ; it contains spacious bedrooms, ladies' and gentlemen's parlors and reading rooms, a handsome dining room with modern appointments and conveniences ; it is lighted by electricity and supplied with water from the town waterworks, which are near the hotel, the water is drawn from the lake (a natural rock bottom reservoir) and is of good quality. A beautiful view is obtained from the spacious double balconies ; and the modern system of iron fire escapes, with the close proximity of the water supply, ensures perfect safety from fire. The post office address of this hotel is Parry Sound. The hotel will accommodate 150 guests.

ROUND TRIP, TORONTO TO PARRY SOUND AND MUSKOKA LAKES.

A very enjoyable and varied excursion trip is the following : From Toronto, by the G.T.R., to Penetang or Midland (about 100 miles) ; thence, N.S.N. Co. or G.N.T. Co., to Rose Point (65 miles) ; thence, O. A. & P. S'd Ry., to Smith's Crossing or Maple Lake Station (15 miles) ; thence stage coach to Port Cockburn, at head of Lake Joseph (7 miles) ; thence, M.N. Co., to Gravenhurst (45 miles) ; thence, G.T.R., back to Toronto (110 miles). This trip can also be reversed.

The hotels are : Penetang, The Penetanguishene ; Rose Point, Rose Point Hotel ; Parry Sound, Belvidere Hotel ; Port Cockburn, Summit House.

Tickets and all information at G.T.R. ticket offices.

Taking up the thread of travel again from Barrie, one of the chief centres of the N. & N. W. Division of the G.T.R., we come (next in importance) to ORILLIA, 22 miles further north, population 5,000, situated picturesquely between Lakes Simcoe and Couchiching. This is a well-known tourists' resort, and like Barrie has fine buildings and stores and shady streets. Strawberry Island is the popular resort of this town. One hundred and ten miles further north, situated between Gull and Muskoka Lakes, is the pretty and salubrious town of

GRAVENHURST.

If any endorsement were needed of the claims of Gravenhurst as a health resort, no better evidence could be furnished than the fact that this town was chosen by the medical experts employed to select a spot for the erection, last year, of The Consumptive Sanitarium, by the National Sanitarium Association.

The personnel of this Association comprises many of the leading men of Canada, and to Mr. W. J. Gage, of Toronto, the Treasurer, is due the inception of this philanthropic and costly undertaking, which involves the expenditure of something like a quarter of a million dollars.

The Sanitarium will be conducted on the cottage system, which, while undoubtedly expensive, is admittedly the superior method of treating this disease.

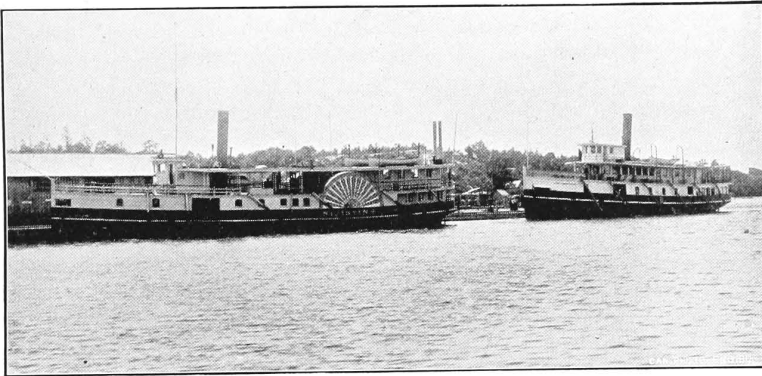
The size of the main building, containing reception rooms and physicians' apartments is 100 x 60 feet, an adjoining wing containing dining room and kitchen measures 80 x 22 feet, while another wing comprising lavatories and bathrooms is 70 x 24 feet ; several cottages will be built, and their number increased as necessity may demand ; these cottages will accommodate four to six patients each.

Billiards, bowling, croquet, etc., will be provided for patients.

The realization of this great project has been rendered possible by

munificent gifts by some of Toronto's foremost merchants, aided by a grant of \$10,000 from the Corporation of Gravenhurst.

Special attractions are offered to excursionists by the Gravenhurst Park Association, which has secured and laid out a tract of 75 acres adjoining the town, and flanked on one side by the pretty Gull Lake; 45 acres of this is laid out as picnic grounds, ball grounds, etc., a great feature is the half mile bicycle track; there is a 15 acre grove of beech and maple, and a mile of fencing encloses the park. The grounds are being leased for a term of years to the Agricultural Society for the Annual Exhibition, and this Society will erect buildings for the Annual Exhibition, which will be at the disposal of the Park Association while



S.S. "Medora" and "Nipissing" M. N. Co.

not in use by the Society. The Park Association is also erecting a fine two-story grand stand 60 x 30 feet. Gravenhurst is rapidly filling up, and has a prosperous future. It boasts a population of 2,000, and has good hotel accommodation and stores.

MUSKOKA LAKES.

Muskoka! Wherein lies the magic of that old Indian name? To those even who know it best, it means far more than can ever be expressed. To hundreds it is their summer home, rich with associations of purest happiness, of renewed health and new leases of life, rich with sweet memories—their *El Dorado*.

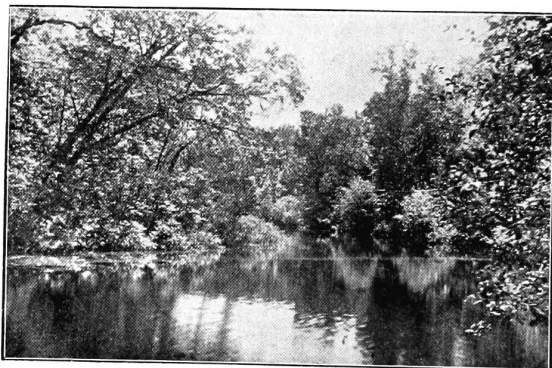
To those who know it not, how can we describe it? Mere word-painting and imagery are inadequate, and we can but give a faint idea of this fairy land and invite our readers to judge for themselves.

To descend to mere facts and figures the region known as "Muskoka Lakes" is a collection of lakes and islands, nearly 800 feet above Lake

Ontario, in Northern Ontario, 112 miles from Toronto and 145 miles from Hamilton, on the line of the Northern and North-Western Division of the Grand Trunk Railway ; the point of destination by rail is Gravenhurst (Muskoka Wharf), where close connection is made with the boats of the Muskoka Navigation Company, and it is but a day's journey from Toronto or Hamilton to the farthest stopping place on the lakes.

The principal lakes are three in number, Muskoka being the first and largest, Rosseau the second and next largest, and Joseph the third, being somewhat smaller than Lake Rosseau.

From Muskoka wharf to Port Carling, the junction of Lakes Muskoka and Rosseau, the distance is twenty-one miles, from the same starting point to Rosseau, at the head of the lake of this name it is thirty-three miles, while the farthest point on the three lakes, Port Cockburn at the head of Lake Joseph, is forty-five miles from the wharf



On Shadow River, Lake Rosseau.

at Gravenhurst ; the widths of the lakes varying from channels a few hundred yards across, to open stretches of water about six miles wide.

The lakes are fed by several rivers and streams, chief among them being the Muskoka River, entering Muskoka Lake about midway between Gravenhurst and Beaumaris, on the eastern shore of the lake, and the route for the M. N. Company's steamers to Bracebridge. The Dee River connecting Three-Mile Lake with Lake Rosseau near Windermere, Skeleton River from Skeleton Lake to Lake Rosseau, and Rosseau River, with the pretty Rosseau Falls, all feed this, the second largest of the three lakes on its eastern boundary, while Shadow River, one of nature's gems, at the head of the lake, will alone repay the tourist for the entire journey up the lakes. With its deceptive shadows and reflections it is nature "holding the mirror to nature." Two other notable streams, dear to the heart of the sportsman and the intrepid

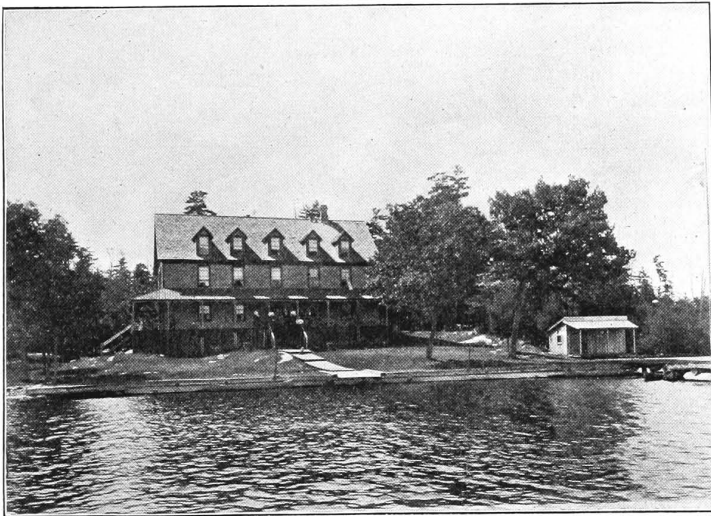
canoeist are the Moon and Muskosh Rivers, the outlet of the lakes from Muskoka Lake at Bala, which flow into the Georgian Bay to the west.

With regard to hotel life in Muskoka much might be said, of the gaiety, and *bon camaraderie* which exist; of the many phases of life seen, and amusements indulged in; but we will confine our remarks to some practical information about a few of the principal and most popular of these resorts.

BEAUMARIS HOTEL

Situated on Tondern Island, on Muskoka Lake, Beaumaris is the first stopping place of the M. N. Company's boats going north. The fishing in the vicinity (bass and pickerel) is excellent.

This is the summer home of several good social and fishing clubs from Pennsylvania, who have erected handsome club houses close to the hotel. Beaumaris, of which Ed. Prowse is proprietor, is a favorite resort for hay fever patients, who experience instant relief and a complete cure here. The hotel is an imposing structure with accommodation for 200 guests. Boating, bathing, lawn tennis, billiards, bowling and dancing, are among the amusements provided. There is a daily mail and express office. It is one of the most popular hotels in Muskoka, especially with Southerners.



Clifton House, Bala.

CLIFTON HOUSE, BALA

Bala is headquarters for the famous Moon River, the river of rapids and big fish, to encounter either being equally exciting. The scenery in the neighborhood is beautiful, Bala Falls alone being worthy of a trip to see. Deer and partridge hunting are excellent here. Both Indian and white guides are procurable. The hotel mentioned, under the supervision of Mrs. John Board, is a cosy structure, containing post and express offices and comfortable rooms. The boating and bathing are excellent. Bala with its grand scenery and sandy beaches, situated at the foot of Lake Muskoka, is convenient of access, connection being made at Beaumaris on up or down trips.

STRATTON HOUSE, PORT CARLING

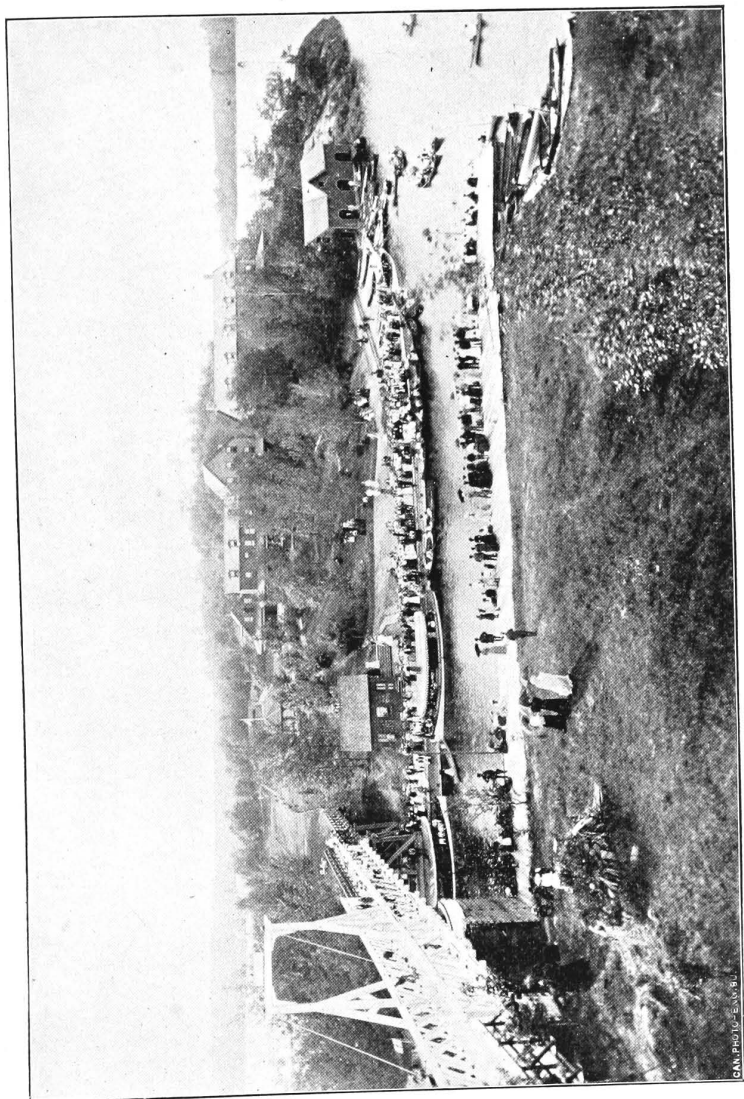
There are many inducements for a sojourn at the "Port," the ever varying scene of excitement and bustle caused by the arrival and departure of steamers and pleasure boats passing through the lock here on their journey north and south, render this the centre of attraction. Stratton House, the popular hotel at Port Carling, is a favorite resort and has accommodation for fifty guests. The bed-rooms are airy and comfortably furnished, there is a good dancing room and a good table is kept.

Among the many amusements indulged in are boating, bathing, fishing and dancing. The numerous romantic walks in the neighborhood are a never failing source of pleasure. The house and well-tended grounds, to which extensive additions and improvements have been added, will now be more attractive than ever. Mr. John Fraser is the proprietor of this hotel.

PROSPECT HOUSE, PORT SANDFIELD

There is an indescribable, though by no means unaccountable charm about Port Sandfield, it is *par excellence* a resort for young people, and its attractiveness may be attributed in large part to the constant life and gaiety of the place as well as to the undoubted popularity of the proprietor, Mr. Enoch Cox.

There is an excellent sandy beach at Port Sandfield, perfectly safe for ladies and children, fine tennis courts, good boats, a good licensed steam launch and large ball-room. The hotel—Prospect House—is a well equipped structure, with accommodation for 200 guests, and contains post and express offices, and an excellent *menu* is provided. A good view is obtained of Lakes Rosseau and Joseph from the shady verandahs of the hotel, and from the mountain, 180 feet high, which is situated across the fine Government bridge over the channel. The annual regatta held at Port Sandfield during August, is one of the events of the season, and attracts competitors from all parts of the lakes.



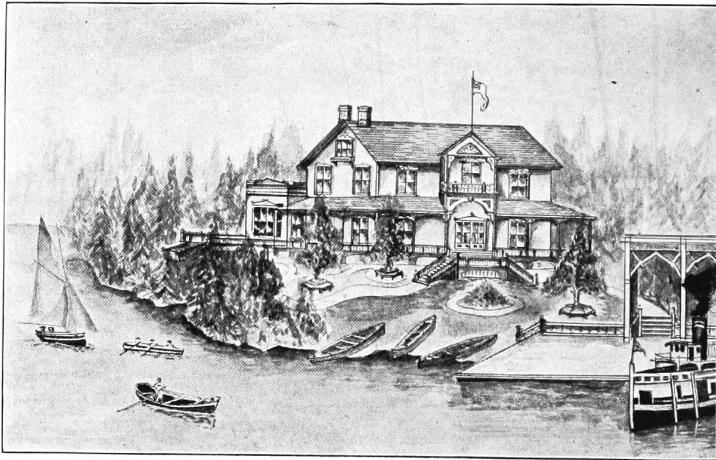
Prospect House, Port Sandfield.

CRAIGIE LEA HOUSE

Little Lake Joseph, which contains some of the finest scenery and fishing in the district, is a branch, as it were, of Lake Joseph. Craigie Lea is between Little Lake Joseph and the Joseph River, in a pretty bay. The house, which is under the management of Miss J. P. Creigh, is well furnished and specially suitable for ladies and those desiring the quiet and refinement of a home. Address, Craigie Lea, P.O.

GORDON HOUSE, GORDON BAY

In many respects this resort on Lake Joseph is very favorably situated, it is the headquarters of the chain of lakes leading to the



Gordon House, Gordon Bay, Lake Joseph.

famous Crane and Blackstone Lakes of fishing repute, being but fifteen minutes row from Portage Lake, where there is the best of sport. The hotel occupies an elevated position on an eminence overlooking Gordon Bay. Gordon House has accommodation for fifty guests. A liberal table is supplied, and a first-class piano is at the guests' disposal. Mr. A. Winter is the proprietor here.

A novel feature which will be found a great convenience to amateur photographers, is a dark room set apart for their special use; there is also a well lighted room available as a study for artists, and Miss Winter (an academy graduate), is always happy to assist lady artists in their work and studies. In the grounds around the hotel are many sequestered and shady nooks, and Gordon Island, in the centre of the bay, and

part of Mr. Winter's property, will be found a delightful spot for moonlight and picnic parties. The Post office address is Gordon Bay, P.O.

SUMMIT HOUSE, PORT COCKBURN

Port Cockburn, at the head of Lake Joseph, ranks as one of Muskoka's premier resorts. It is renowned as being specially suitable for those suffering from hay fever. This is no doubt largely owing to its great elevation and the proximity of tracts of pine forest. Summit House is a handsome hotel, built on a lofty eminence with a beautiful view of the vista of islands and water stretches of Lake Joseph. It is one of the largest hotels on the lakes and is handsomely furnished throughout. The menu is excellent. The best of fishing is here, black bass, pickerel and salmon trout in Lake Joseph, and in Clear, Portage, White Fish, Silver and Trout Lakes, all close to the hotel and easily reached. The Blackstone and Crane Lakes, famous for maskalonge and black bass are easily accessible by means of the new short route. The fine steam launch Onaganoh, for the exclusive use of guests, makes daily trips to fishing grounds, etc. Port Cockburn is the central point of the new Parry Sound combination trip mentioned elsewhere. Boating, bathing, bowling and tennis are enjoyed here in perfection. There are postal, telegraph and express offices in the hotel. This deservedly popular resort under the proprietorship of Hamilton Fraser & Sons, is the headquarters for American travel to Muskoka.

WINDERMERE HOUSE, LAKE ROSSEAU

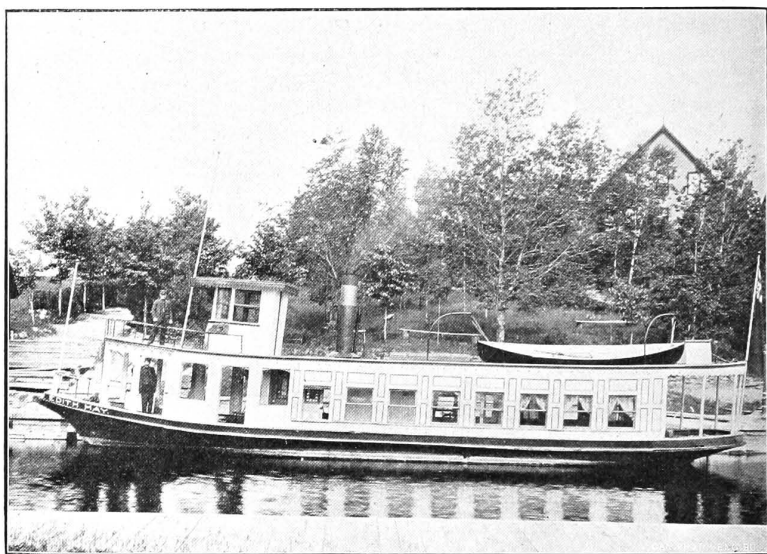
One of the largest hotels in Muskoka is Windermere on Lake Rosseau, nearly four miles from Port Carling. The house presents a very imposing appearance from across the wide bay in which this resort is situated. By the side of the hotel runs the Government road to Skeleton Lake and River five miles distant; in the latter fine brook trout are caught, and in Trout Lake three miles distant is good bass and salmon trout fishing. There is a good sandy beach for bathing; and tennis, quoits, bowling and boating are special features. Windermere is quite a little settlement, possessing two stores and Methodist and Presbyterian churches. The building contains smoking rooms, parlors, spacious dining-room and lofty bed-rooms, from which extend fire escapes, besides a bath-room fitted up with modern appliances. The sanitary arrangements have been entirely remodelled according to plans recommended by the medical health officer. There is a daily mail and postal, telegraph and express offices in the hotel. Windermere with its adjoining cottages will accommodate 200 guests. The proprietor is Mr. Thos. Aitken.

Other resorts worthy of special mention on Lake Rosseau are Cleveland's and Morinus House, (the latter being remodelled), Minett

P.O. ; and Maplehurst & Monteith's House at Rosseau, at the head of the lake.

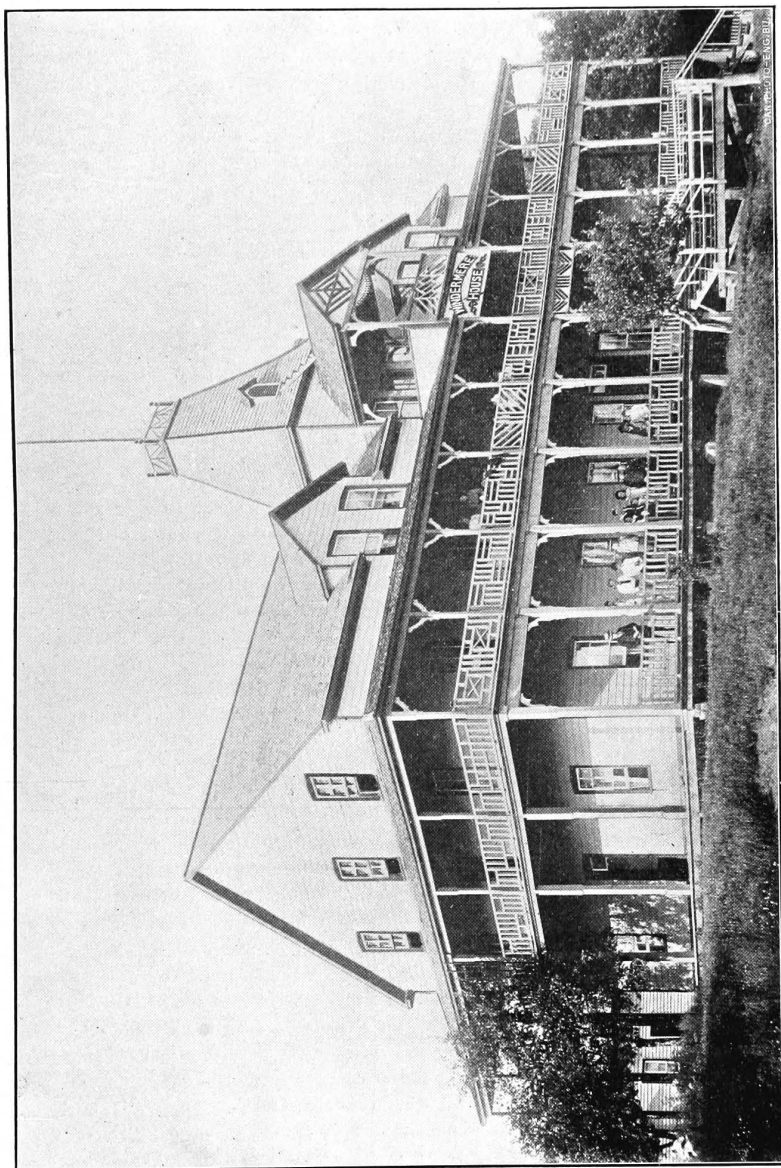
For many tourists cottage life has peculiar charms in preference to the gaiety of hotels, and Muskoka affords every inducement for this style of living. No anxiety need be felt as to means of "shopping" by those who choose this more secluded method of summering, as the supply boats which ply on the lakes call at all cottages, camps and hotels with full supplies of everything requisite, from a needle to a sack of flour.

The accompanying illustration of the "Edith May" will show to prospective cottagers what this floating store is like ; it is quite a well-



"Edith May," Supply Boat.

known feature of Muskoka to the regular resident, its cheerful whistle sounding across the water, calling the occupants of the various houses to the wharf to purchase their supplies of household necessities and luxuries. Messrs. Homer & Co. of Gravenhurst and Rosseau are the owners of the craft ; for years they have made a special study of this business, and consequently are fully alive to the diversified requirements of the sojourners from the city ; the boat carries first class and completely assorted stock of everything one could possibly want during the season's outing, such as dry goods, groceries, crockery, flour and feed, boots and shoes, hardware, stoves, tinware, fresh and canned meats, vegetables,



Windermere House, Lake Rosseau.

fruit, potatoes, etc. This supply boat "stocks up" at the branch store at Rosseau, and makes the rounds of Lake Joseph and Rosseau regularly twice or three times every week, delivering goods and taking orders for delivery on next trip.

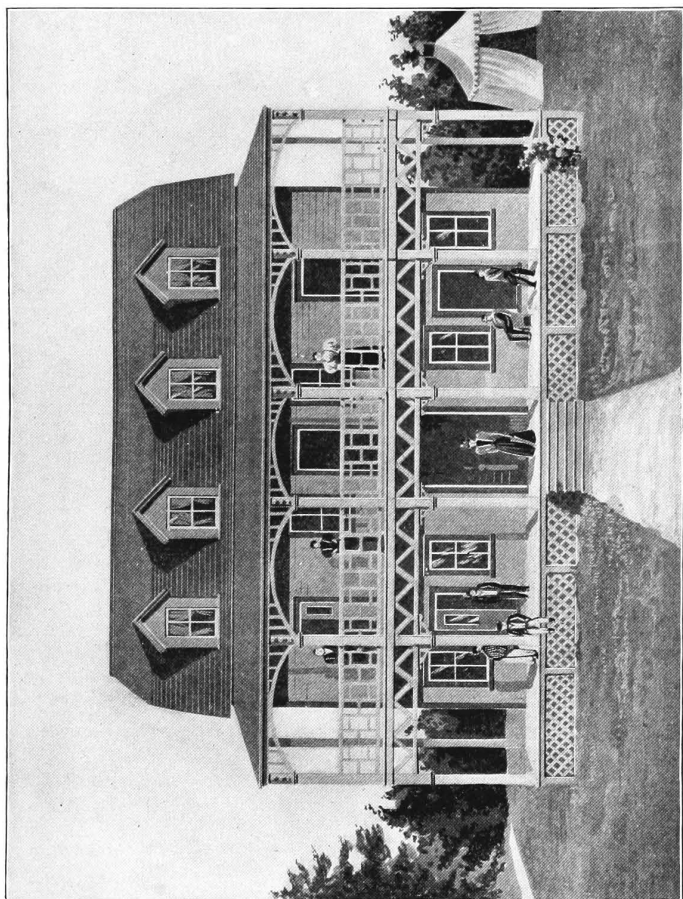
In addition to all the charms of scenery and sport and conveniences for accommodating tourists, briefly noticed in this sketch, nothing doubtless has added so much to Muskoka's renown, as the splendid service provided by the fine steamers of the Muskoka Navigation Company. The boats of this fleet, six in number, are in every respect modern and well appointed.

NEWPORT HOUSE, SKELETON LAKE

Skeleton Lake is one of the prettiest sheets of water in the Muskoka district. It is ten miles long by eight miles wide; the surface is dotted with numbers of well timbered islands; the surrounding scenery is picturesque and grand. One object of special interest is the "Devil's Face," a huge rock towering perpendicularly nearly 200 feet above the water, with a width of 400 yards. The water at the sheer base of this rock has never been fathomed. So remarkably clear is the water of this lake that minute objects are visible at a depth of fifteen feet.

Skeleton Lake is pre-eminently a fishing and hunting resort, salmon trout and white fish are very numerous, the former running as high as forty pounds in weight. The proprietors of the hotel, the Messrs. Brabant, have stocked a brook near by with numbers of "speckled beauties." Deer and bear are also very plentiful in the fall. A sandy beach extending 200 yards near the hotel affords excellent bathing; boating, lawn tennis, and clay pigeon shooting are among the amusements enjoyed here. Religious services are held weekly at Aspdin, the P. O. address of this resort, three miles distant. Newport House, the new and attractive summer hotel, is situated thirty feet above the lake on the eastern shore, commanding a splendid view and ensuring at all times a refreshing breeze. This hotel is reached by M. N. Company's steamers from Gravenhurst to Windermere, thence by stage to Ullswater five miles, thence by the Newport House private steam yacht, or tourists can go via Utterson on the G.T.R., N. & N. W. Division, thence by N. Hanes' stage, a nine miles' drive. Guests may be assured of every attention and courtesy from the proprietors Messrs. Brabant. The table is constantly supplied with all the season's delicacies and the terms are moderate \$1.50 to \$2.00 per day, \$8.00 to \$10.00 per week, with special rates for families. There is accommodation for fifty guests. Address Newport House, Aspdin P.O., Muskoka, Ont.

Returning once more to the main line of travel on the G.T.R., a town which is of considerable interest is BRACEBRIDGE with 2,000 population, twelve miles north of Gravenhurst on the Muskoka River. It is



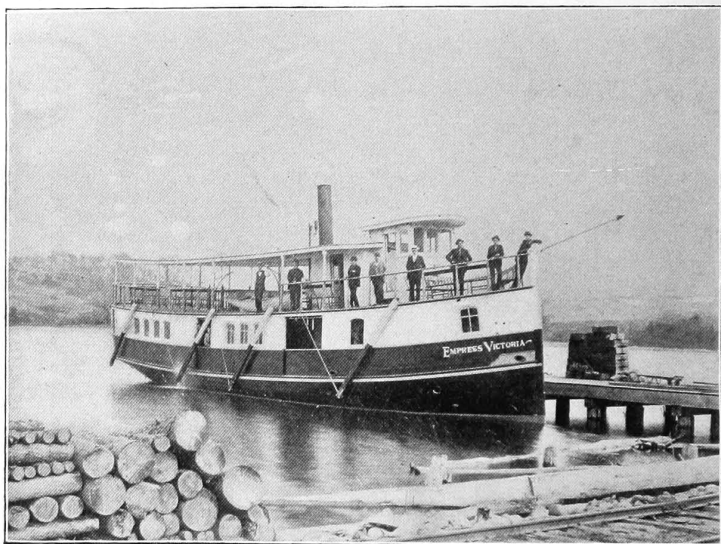
Newport House, Skeleton Lake.

a pretty town, and headquarters for the Bala trip on the Muskoka Lake by the M. N. Company's boats.

But we have to journey still further north to reach what will, ere long, be one of the most popular tourist resorts of Ontario. We speak now of

HUNTSVILLE (The Switzerland of Ontario).

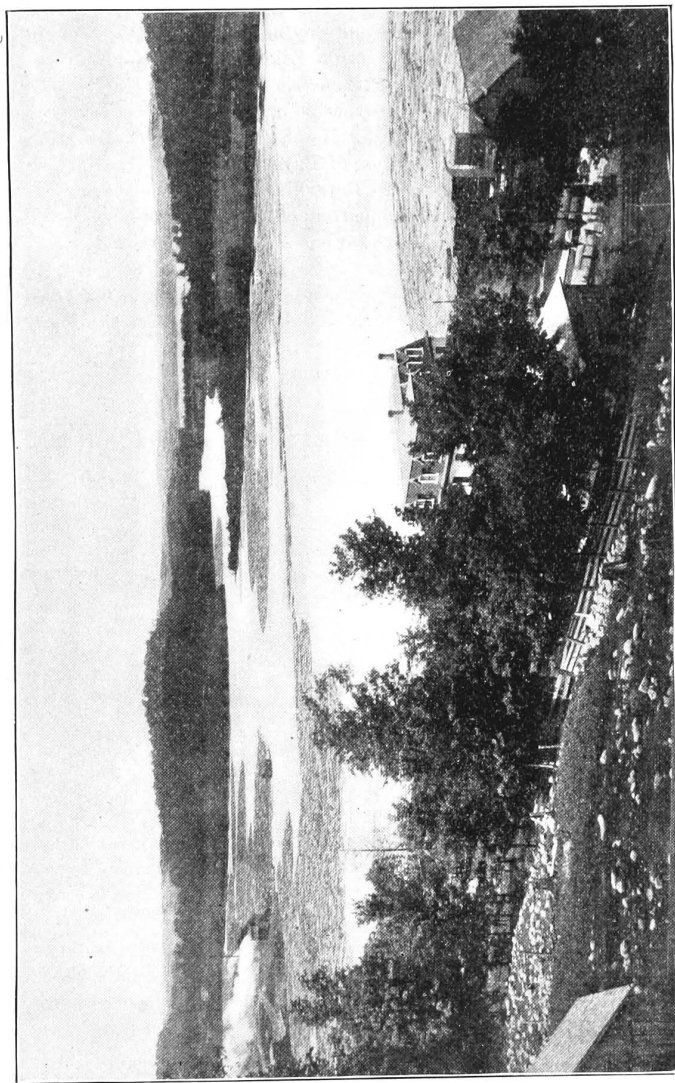
Let us take a brief glance at this charming region. The village of Huntsville, with a population of 2,000, lies sixty miles north of Orillia and 145 miles from Toronto on the G.T.R. It nestles in a



S.S. "Empress Victoria," H. and L. of B. Line.

little valley between two beautiful lakes—Vernon and Fairy. The principal lakes are Vernon, Fairy, Mary, Peninsula, and Lake of Bays, or Trading Lake; these are on the line of regular steamboat travel. Beyond these again to the east are Hollow, Kimball's, Rock, Bear, Round and Fletcher Lakes. In these latter, and hundreds of neighboring and unnamed lakes, including Baysville on Lake of Bays, is the finest of speckled trout fishing.

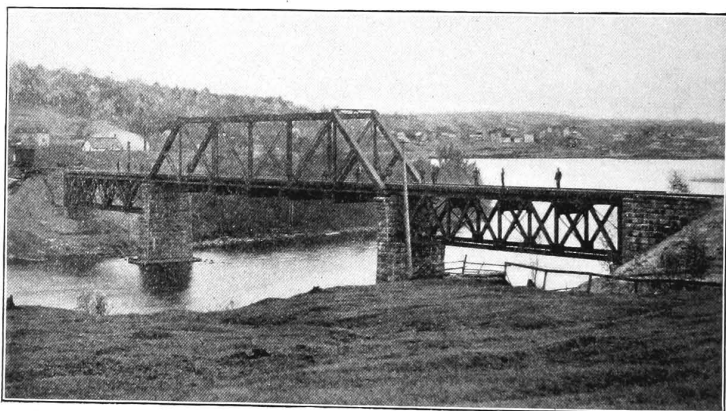
The steamboat trip from Huntsville to Baysville on the commodious steamers of Captain Marsh's Huntsville and Lake of Bays line is most enjoyable. Passing down the Big East River at the end of the town we



Lake Vernon, Huntsville, from Lookout Mountain.

first enter Fairy Lake, a pretty sheet of water on the shores of which are some good farms; then, threading our way along a narrow channel one mile in length, we emerge into Peninsula Lake, passing in full view the picturesque summer resort, Deerhurst, and shortly arrive at the Portage. It is eight miles from Huntsville to this point. Passengers disembark here and passing the Peninsula Lake Hotel, take stage or walk along the one mile road which leads to Lake of Bays; taking boat again here another eight miles sail brings us to Baysville. Dorset, eighteen miles from Huntsville, and Dwight, headquarters of the Dwight Wiman Hunting Club, thirteen miles from Dorset, are good fishing points and calling places of the steamboat line.

There are two daily boats, at 8 a.m. and 3 p.m., for Peninsula Lake and the Portage, a one hour's journey; and a tri-weekly service to Bays-



Grand Trunk Railway Bridge, Huntsville.

ville, sixteen miles distant from Huntsville. Baysville is a great resort for speckled trout, salmon trout and white fish; this trip occupies nearly three hours including stoppages and portage. Close connection is made with trains at Huntsville.

The Huntsville Lake district, nearly 1,000 feet above Lake Ontario, is noted as a resort for sufferers from malaria, hay fever and consumption. The scenery is beautiful in the extreme and varied, and the air wonderfully invigorating. There are several good hotels on the Huntsville lakes and we will mention a few prominent ones.

DEERHURST HOTEL

Almost in the centre of the beautiful chain of lakes already mentioned lies Deerhurst; a pretty name and a pretty place. This hotel,

newly built, occupies a beautiful situation on Peninsula Lake, four miles from Huntsville. Built on a rising height of land, with terraced lawns sloping to the water's edge, fringed by shrubs and bushes, with a background of dense forest growth, this is an ideal resort. Tourists can enjoy good boating, bathing, fishing and tennis at Deerhurst. There is a daily mail, and the steamers of the H. & L. of B. N. Company making close connection with the G.T.R., call twice daily at the wharf. The hotel is under first-class management and will be conducted on a modern basis of excellence. There is accommodation for fifty guests. Rates \$1.50 to \$2.00 per day, \$8.00 to \$10.00 per week. Communications should be addressed to the proprietors "Deerhurst," Huntsville, Ont.



Deerhurst, Peninsula Lake, Huntsville.

LAKE VIEW HOTEL

We have already referred to this house as being on the portage road leading from Peninsula to Trading Lake or Lake of Bays. It is a pretty structure built on the top of a hill and from the balconies or verandahs of the hotel a fine view is obtained of the snug little bay in which the steamer lies at her moorings at the foot of the hill. Across this bay sloping lands with waving fields of grain, dotted with farm houses, and with a background of undulating hills form a pleasant prospect. On the intervening space of water, numerous wooded islands add variety to the scene.

In front of the hotel is a grove of silver birch, maple, ash and evergreen, with paths leading through to the sandy beach which is excellent for bathing. Boating and fishing furnish abundant enjoyment at this charming spot. Consumptive, malaria and hay fever patients find speedy relief in the invigorating, pine-scented atmosphere. Steamers call twice daily and guests are privileged to use these boats on either of the adjacent lakes. There is a daily mail in summer. The proprietor, who is also the postmaster, is Mr. J. G. Henderson. Address, Peninsula Lake, P.O., Muskoka, Ont. The hotel will accommodate fifty guests, rates are \$1.00 per day, \$5.00 per week.

Huntsville itself contains several good hotels and boarding houses for the accommodation of tourists, chief among them being the Reid House close to the steamboat wharf; this is a modern building of red brick with large, well furnished rooms, a good bill of fare, and is conducted in a first-class manner by the proprietor Mr. J. N. Reid. There is accommodation for 100 guests, rates \$1.50 to \$2.00 per day, \$8.00 to \$10.00 per week.

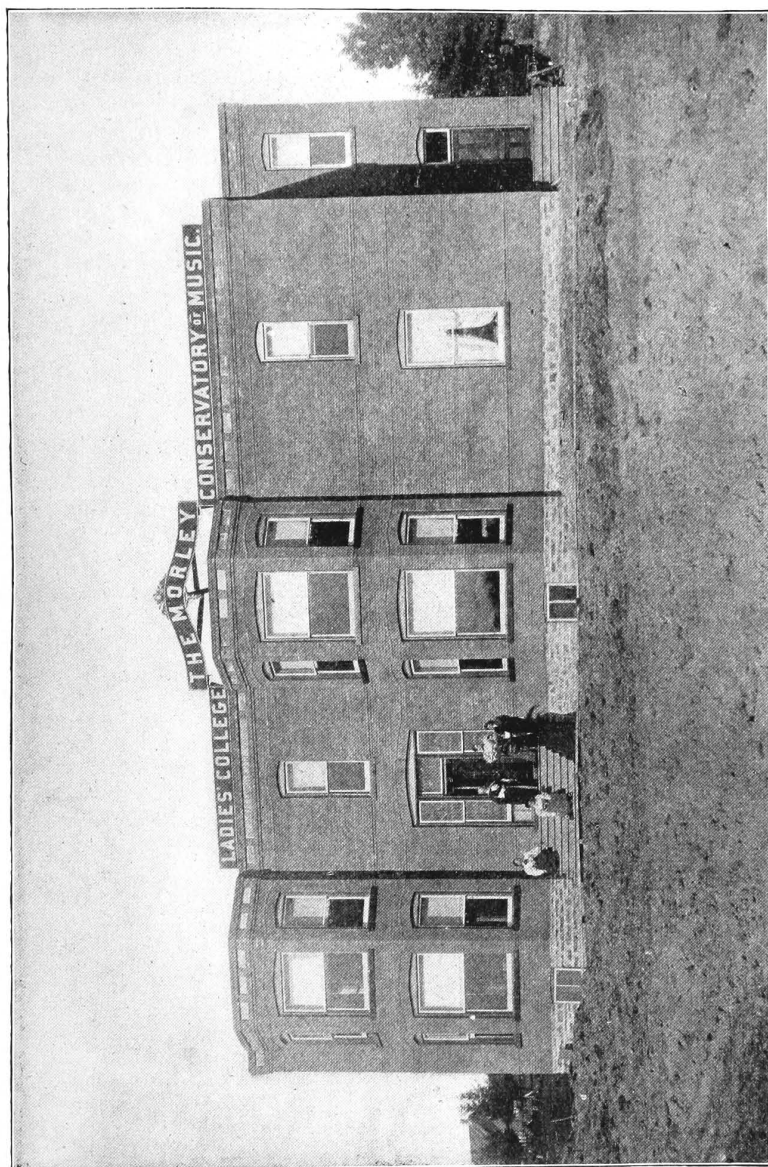
There are two private hospitals in the village conducted on modern principles, they are under the supervision of two able medical men, Dr. J. W. Hart and Dr. F. L. Howland, respectively.

Education is also a prominent feature of Huntsville a fine ladies' college having lately been erected, a brief account of which we will give here.

MORLEY COLLEGE

Huntsville is fortunate in possessing such an institution as this, and it speaks well for the growing popularity of the place and its extreme healthfulness that this college was established here. The building itself is imposing and is built on the high bank of the Big East River, also known as the Muskoka River, which has been referred to earlier in this sketch. The view from the house is delightful, extending over the river and Fairy Lake, only a short distance away. The building is thoroughly equipped for all the purposes of a first-class school, including large airy rooms, baths, lavatories and all sanitary appliances, with excellent system of water supply. The pleasure grounds cover an area of three and a half acres, in which are tennis lawn, bathing houses, etc. A professional lady swimmer has been engaged to take charge of the swimming classes. The principals of this Conservatory of Music and School of Art are Miss Morley, L.L.C.M., A. Mus. L.C.M., Representative of the London College of Music, silver medalist for painting; Mrs. Haydon, D.P.L.C.M., Examiner for the London College of Music; Stocks Hammond, Esq., Mus. Doc., Toronto, Organizing Secretary for the L.C. in Canada and America.

The institution is in union with the London College of Music, England. The college was first opened September 4, 1893, at St. John,



The Morley College.

New Brunswick, and by its removal to its present location, opportunity will be afforded for delicate girls to combine education with all the advantages of a health resort.

Miss Morley received the greater part of her education in France, and later on at a Hanoverian School, consequently the French and German languages are thoroughly taught by her. In addition to her being a Licentiate of the London College of Music, she holds two silver medals for painting. The assistant teachers have also fully passed the higher local examinations in England and thus are fully qualified for their positions.



Burk House, Burk's Falls.

BURK'S FALLS.

Katrine is a good fishing resort above Huntsville, but between this latter town and North Bay the most important stop is at Burk's Falls. This is headquarters for the Magnetawan and Ahmic Lake trip of the M. N. Company's line, and the fishing—bass, pickerel and trout—is excellent in these waters. Deer hunting in the fall attracts large numbers of devotees of this sport.

The Burk House, the popular hotel of this place, is a first-class hotel having a capacity for seventy-five guests. The rates are \$1.50 to \$2.00 per day, \$8.00 to \$10.00 per week. The proprietor Mr. D. F. Burk, the founder of the village that bears his name, is also the postmaster. Burk's Falls is 170 miles north of Toronto and fifty from North Bay.

SOUTH RIVER, TROUT CREEK, etc., further north, are famous for the excellent fishing afforded on their rivers and streams. NORTH BAY, the terminus of this line, is the connecting point for the C.P.R. main line to the west. It is a great fishing and hunting headquarters and has good hotels.

The Great Lakes—Huron, Erie, Ontario.

GODERICH (Lake Huron)

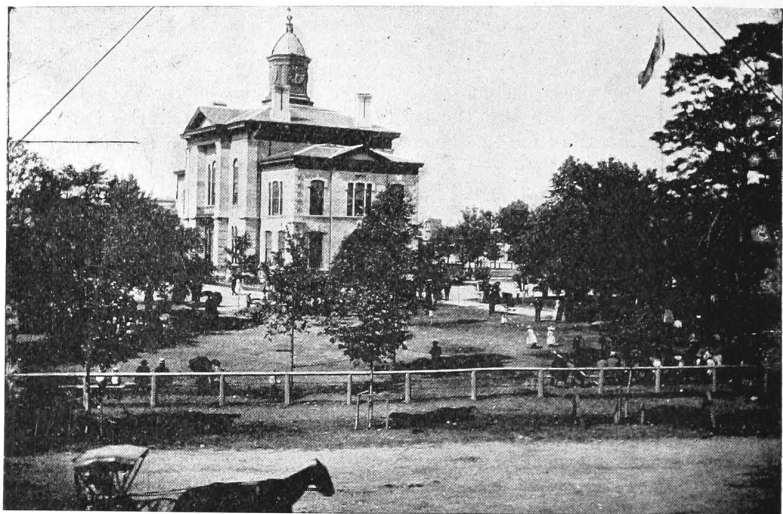
As the heated term approaches, and the necessity arises for seeking some cooler clime, the thoughts of our far distant cousins in the South turn longingly to the Great Lakes of Ontario, where cool, refreshing breezes always blow. There is probably no place on these great inland lakes so favorably situated, or so popular, as the town of Goderich, on the eastern shore of Lake Huron.

Owing to its altitude of 125 feet above lake level, and the prevailing breezes, which are wafted over 500 miles across lakes Superior, Michigan and Huron, this spot enjoys a most healthful and invigorating climate, free from malaria, hay fever, mosquitoes, or black flies.

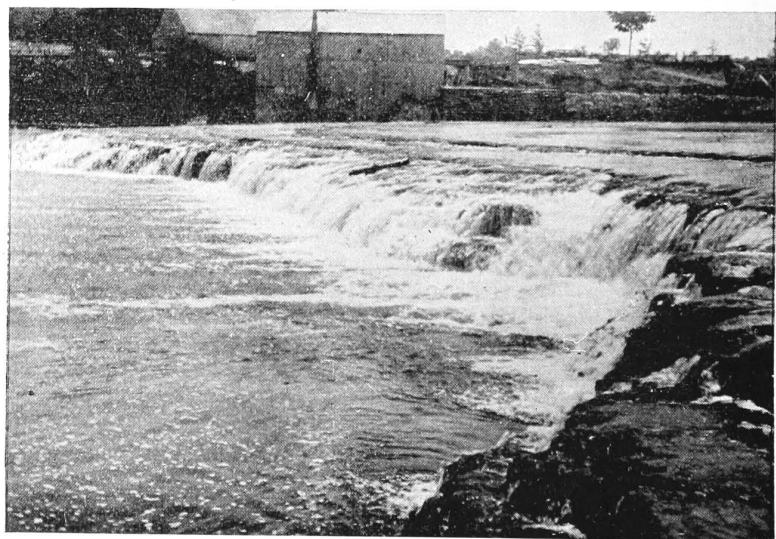
The sunsets over Lake Huron are truly gorgeous, and are the delight of all visitors to this place.

Goderich is easily accessible, by rail or by boat, from all points as will be seen by the following tables of distances and times :

From Buffalo, 100 miles, by G.T.R. direct, 6 hours. Detroit, via London, 171 miles, G.T.R., 7½ hours. Windsor (opposite Detroit), bi-weekly steamers. Toronto, 134 miles, G.T.R., 5 hours. Port Huron, 130 miles, G.T.R., 7½ hours ; by water, 60 miles; steamers also call on way up from Detroit. St. Louis, Chicago and Cincinnati, leaving on night trains arrive in Goderich following evening at 7.30. Saginaw and Bay City, leaving in the morning arrive at Goderich same evening. From



Huron County Court House, Goderich.



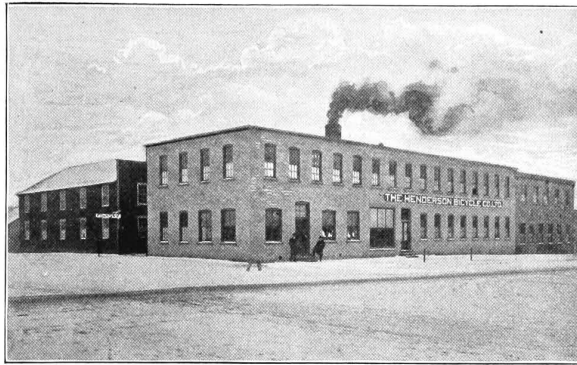
View of the Falls on the River Maitland, Goderich.

London only 2 hours and 50 minutes. Busses and carriages meet all trains and boats.

Good connection is made at Goderich for the unrivalled water trips to the Soo and Mackinac through the 30,000 Islands of Georgian Bay.

The town of Goderich is exceedingly pretty ; the main street is in the form of an octagon, in the centre of of which is Huron County Court House in a picturesque miniature park. The town is supplied with pure water from artesian flowing wells ; the roads are level, and wide avenues with beautiful shade trees, with the scenery on the River Maitland and surrounding country add to the charm of this resort.

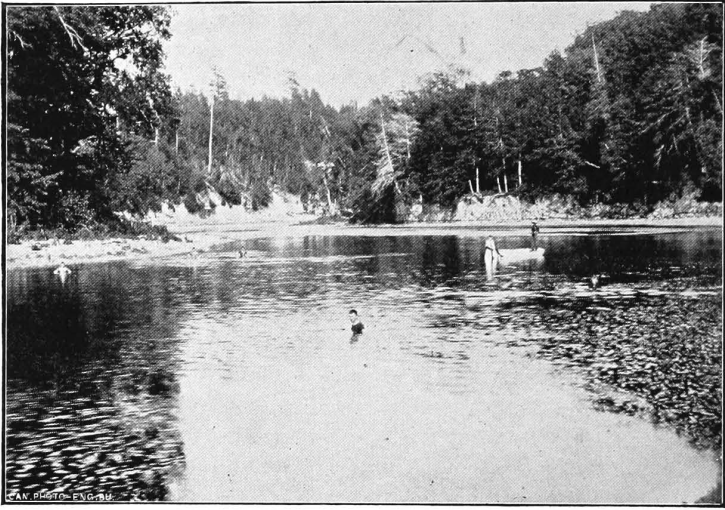
The attractions at Gooderich are many : there is a perpetually running sulphur mineral spring ; the broad, hard limestone roads are unexcelled for bicycling, riding and driving ; there are all kinds of amusements to be enjoyed : boating, bathing, fishing—trout, bass and



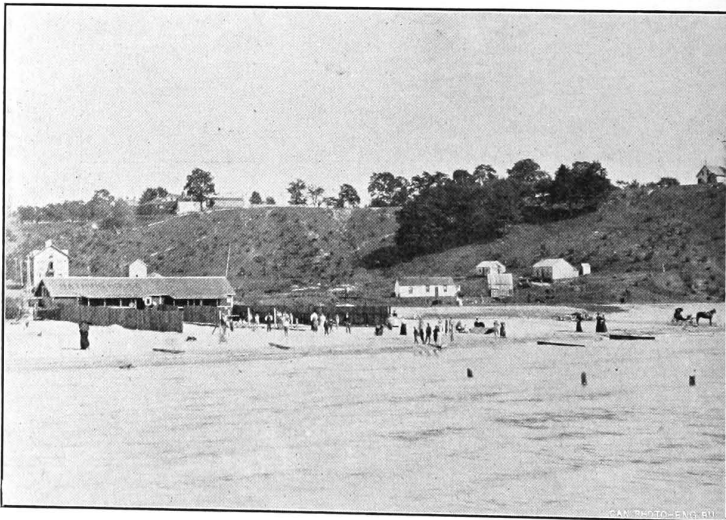
The Henderson Bicycle Factory, Goderich.

enormous salmon trout—lawn bowling, tennis, baseball, lacrosse, etc. ; first-class driving and bicycle liveries, billiard and reading rooms, and in short every form of amusement that could be wished for.

The merchants of Goderich are enterprising business men. Several fine factories have been established ; the town is noted far and wide for the famous organs of the Goderich Organ Company, even as far away as Australia ; The Henderson Bicycle Company is another important industry here, their goods are shipped to all points. A great many industries have been, and are being fostered and brought into existence by the Citizens' Committee, which is a live organization of leading business men who have the interest of the town at heart. These gentlemen are largely instrumental in popularizing Goderich as a Summer Resort, and any information on this subject will be cheerfully given by the secretary.



"The Black Hole" on River Maitland, Goderich. A favorite Camping and Fishing Spot.



South Beach and Bathing House, Goderich.

With regard to accommodation for tourists much might be said, but we will confine our remarks to a few of the principal summer hotels.

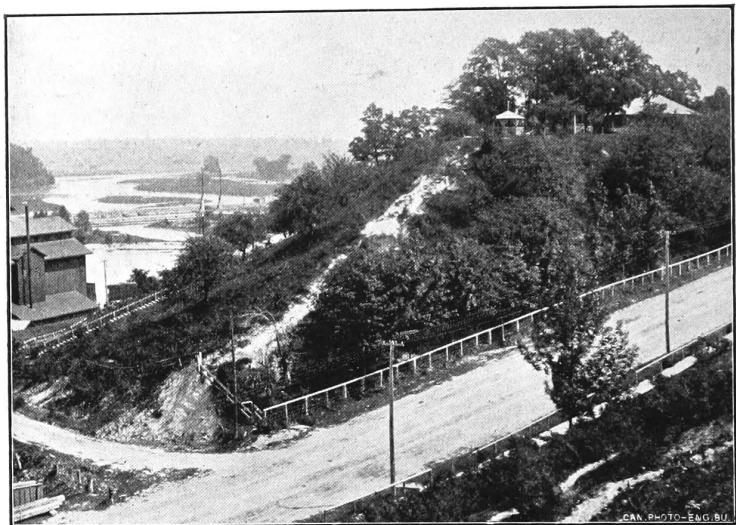
BEDFORD HOTEL.

This is an essentially modern hotel, the finest in Goderich, in fact as a tourist and commercial hotel it is not excelled north of Toronto. It is a handsome white brick structure, standing on the main street at the corner of one of the wide avenues, with an observation tower adding to the imposing appearance of the exterior. The interior is even more handsome and striking; as one enters through the wide doorway into the

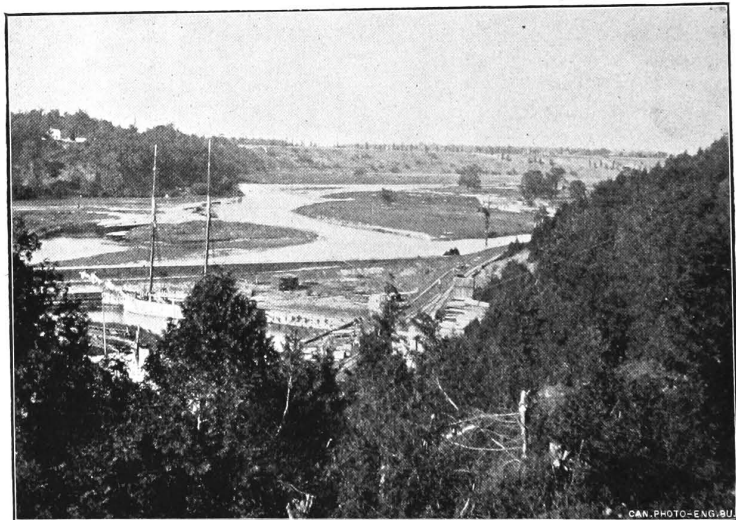


Bedford Hotel, Goderich.

spacious hall, the lofty ceilings and large floor area, give one the impression of roominess seldom met with but in city hotels. The handsome tessellated floor is unique and adds a distinct tone to the whole establishment; the tiles were imported direct from Maw & Co., of England (in bond), and were laid by an expert. It is safe to say that this floor is not excelled in the country. The hall is well lighted by a skylight. The smoking and reading rooms, bedrooms, parlor and dining rooms are well furnished; the sanitary arrangements are first-class. Electric lighting is used throughout. There is accommodation for 150 guests. Rates: \$1.50 to \$2.00 per day; \$10.00 to \$12.00 per week. Busses meet all



Harbor Hill and Road to Docks, Goderich.



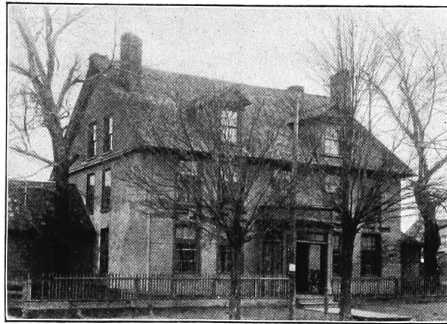
Looking up the River Maitland, at Goderich.

trains and boats. The proprietors, Messrs. Robinson and Martin, are experienced hotel men, and very popular with the travelling public.

PARK HOTEL.

Park Hotel is a quaint, picturesque stone building, standing in a beautiful park of three acres on a high bluff overlooking the lake, at the summit of what is known as Harbor Hill, leading to the docks and bathing beach. The grounds are shaded by locust, maple and cedar trees.

The house, which is but a short distance from the lake, is a favorite headquarters for southern ladies. The interior contains comfortably furnished bedrooms, bathrooms, parlors, etc. The plumbing throughout is of the best. There is accommodation for twenty-five guests in the house, with a dining room capacity for sixty people. The rates are:



Park Hotel, Goderich.

\$7.00 to \$10.00 per week; \$1.50 per day. The proprietress is Mrs. Shannon, a lady well calculated to please and entertain.

There are several other good hotels in Goderich, the Ocean House, on the lake front, close to the steamboat wharf and docks, being a very convenient and favorite resort for anglers and sportsmen.

Goderich has also good restaurants. The most modern and striking is the Balmoral Cafe, which is very handsomely fitted up and is replete with every good thing for the inner man. It is up-to-date.

The country surrounding Goderich is a fine fruit-growing and farming district, which enhances the charms of this popular resort.

Kincardine and Southampton, on Lake Huron's eastern shore, are also worthy of a visit.

On Lake Erie's northern shore are such pretty resorts as Port Dover and Port Stanley on the G.T.R. between Buffalo and Detroit (and easy of access from Toronto and all parts of the States); Walkerville on this

line, and near Windsor and Detroit, is the connecting point for the fine Mettawas Hotel of Kingsville. From Detroit to Sarnia is but a short trip, and the attractions of Sarnia have great claims on the tourist, fine hotels, parks and adjacent resorts, and the great St. Clair Tunnel, the largest river tunnel in the world, being over two and one-fifth miles long.

On the north shore of Lake Ontario and reached by the Grand Trunk main line east, are the towns of Whitby (30 miles from Toronto); Oshawa (35); Port Hope (63); Cobourg (70); Trenton (101), connection with Picton and Wellington, and the curious "Sandbanks," popular summer resorts; the city of Belleville (113), a picturesque city Deseronto (135); the historic city of Kingston (163), and Gananoque (182), connection at both places for the Thousand Island excursion trips; Mallorytown (195); Brockville (208); Prescott (220), etc.; connection at two last named places with C.P.R. for Ottawa.

GEORGIAN BAY ROUTE.

The excursion trip, through the 30,000 Islands of the Georgian Bay by the North Shore and Manitoulin Channel route to the Soo and the fairy Island of Mackinac, is the cheapest and most beautiful of any on the great lakes. The route is by the G.T.R. to Collingwood, connections being made with the Great Northern Transit Company, or White Line; and North Shore Navigation Company, or Black Line.

The Midland Lakes of Ontario.

Among the many notable resorts, in the vicinity of Toronto, there are few that can compare with the Victoria, Peterboro', and Haliburton Lakes. These lakes with their accompanying fishing and hunting resorts are on the Midland Division of the Grand Trunk Railway; they comprise the chain of lakes lying within a radius of fifty miles, between Toronto and the Bay of Quinte, and extending 100 miles north of Lake Ontario.

The central point in the Midland District is the pretty city of

PETERBOROUGH.

Peterborough is ninety miles from Toronto, and is reached by the G.T.R. Midland Division, or by the C.P.R., from the last named city; also from Port Hope, thirty miles to the south, and from Belleville, thirty-six miles to the east, by the G.T.R. This city is the headquarters for Calcutt's Steamboat Line to Rice Lake, on which is situated the pretty resort known as

JUBILEE POINT HOTEL

This resort is at the mouth of the Otonabee River, only three miles north of Harwood, and is also reached from the United States as follows: via Rochester, to Charlotte, thence by steamer *North King* to Cobourg, and G.T.R. to Harwood; or, via Port Hope and Peterborough and down the Otonabee River. The hotel is run in connection with Calcutt's line of steamers and Peterborough Navigation Company's boat.

Rice Lake is a well known fishing resort, and contains maskalonge, black bass, pike, perch and eels; the duck and goose shooting in the vicinity is unequalled. Fishing permits are granted by Inspector White at Harwood, who keeps several men during spawning season to protect the fish.



Jubilee Point Hotel, Rice Lake.

Jubilee Point Hotel is very popular with anglers, who find good sport right at the wharf. The rates are very reasonable, \$1.00 to \$1.50 per day. Full particulars may be obtained from Mr. H. Calcutt, Peterborough, Ont.

Foresters' Island Park.

The Bay of Quinte is one of Nature's "beauty spots." It would be difficult to find anywhere more varied or charming combinations of water, land and sky than are presented for the enjoyment of those who make the trip by boat from the Murray Canal to the "Gap." Centrally located in this rare aggregation of natural loveliness is an island gem, lying

opposite the town of Deseronto and about midway between the Hastings and Prince Edward shores, owned by Dr. Oronhyatekha, Supreme Chief Ranger of the Independent Order of Foresters. A marvelous transformation has taken place in the island during the past year. What the traveller now beholds as he sails by is first a handsome villa in which the doctor and his family spend the summer, known as "The Wigwam," and



"The Wigwam," on Foresters' Island Park.

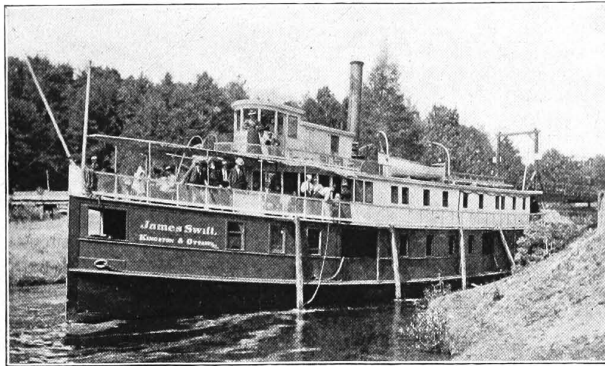
a little to the north an inviting pavilion with capacious dining and refreshment rooms attached, a magnificent music hall, a band stand, and several neat cottages occupied by people who appreciate the invigorating qualities of Quinte's ozone, as well as the restfulness of its beautiful scenery. Other improvements there are, and more to follow, making the Park one of the most delightful, as it is one of the most healthful, resorts for rest and recreation to be found in Canada. The Park has the

great advantage of being easily accessible. It is only a ten-minutes' row to Deseronto, the terminus of the Bay of Quinte Railway, which connects with all trains on the Grand Trunk Railway, while all the Bay steamers, as well as those of the R. & O. N. Co, mail boats between Montreal and Toronto pass daily, and either call at the Park or at Deseronto.

The accompanying view of "The Wigwam" and its surroundings was taken by our artist on the occasion of its dedication to the Independent Order of Foresters. Persons desirous of securing cottages for the summer should correspond with Dr. Oronhyatekha, Toronto.

Kingston to Ottawa, through the Rideau Lakes.

A very charming water trip is that taken by the steamer *James Swift* from the historic city of Kingston, (called in bygone years Cataraqui), to Smith's Falls and Ottawa. The route taken is through the



Steamer "James Swift."

beautiful scenery of the Rideau Lakes (in daylight), the journey occupying twenty-six hours. The fishing in these lakes is of the best, black bass ranging up to six pounds, maskalonge as high as thirty pounds, and salmon trout from twenty-five to thirty pounds—ten to twelve pounds being the average weight of the latter.

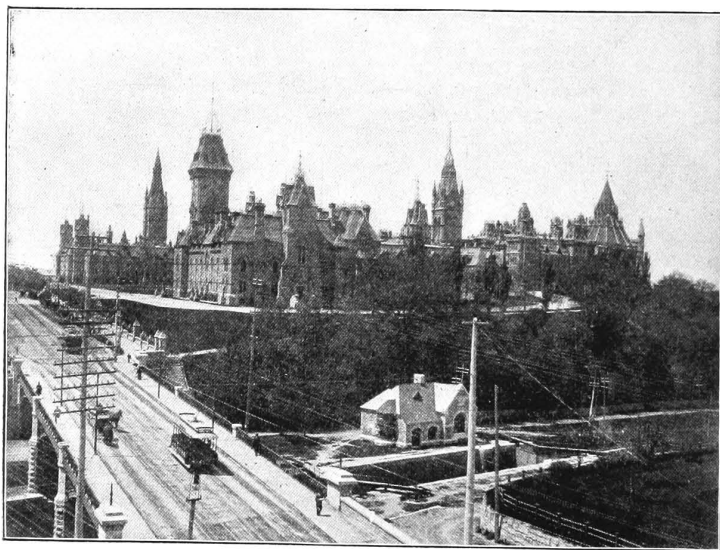
Connection is made at Ottawa with the Ottawa River Navigation Company for Montreal; the route from New York is via Cape Vincent, by the St. Lawrence River Steamboat Company, or 1,000 Island Steamboat Company, or via Clayton by the Richelieu & Ontario Navigation Company, or 1,000 Island Steamboat Company to Kingston, through the

1,000 Islands. Kingston is reached by G.T.R. or Richelieu & Ontario Navigation Company, from Hamilton, Toronto and Montreal.

The *James Swift* is a fine vessel, electric lighted, with good state-rooms, and a good table ; capacity seventy-five to 100 passengers. Rates, Kingston to Ottawa, including meals and berths \$5.00, return \$9.00, including stop over privileges. State-rooms should be booked in advance. The master and owner is James Noonan, Kingston.

OTTAWA.

The year 1826 saw the founding of a little village on the banks of a noble river. The name of the river was the Grand River, the founder



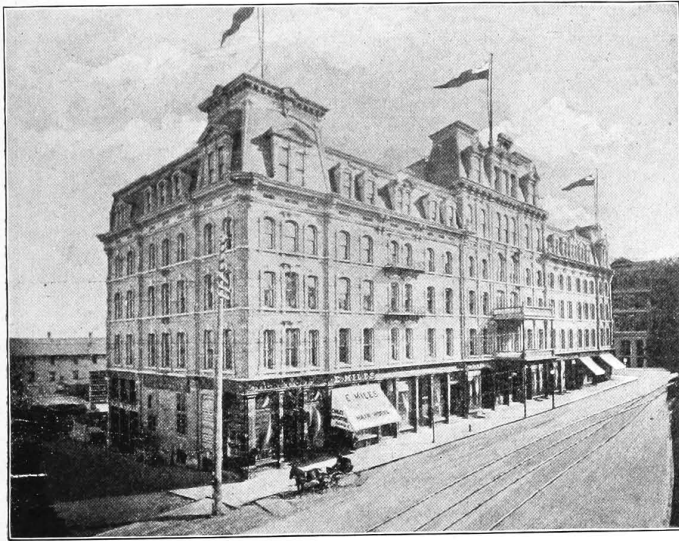
Government Buildings, Ottawa.

was Lieutenant-Col. John By, R.E., and the village was named Bytown, after its founder. After several years the village grew to a city, and the names of both village and river were changed. The erst-while village is now the city of Ottawa, the capital of this broad Dominion, with a population of 45,000 ; the noble river, on the southern bank of which the city is built, bears the same name.

Ottawa has numerous attractions for the tourist, sight-seer and lover of scenery. The Government Buildings, on Parliament Hill, or Barrack Hill, the original site of the barracks, form the centre of

attraction ; they are of beautiful architectural design, built of white stone, and overlook the Ottawa River. The centre block contains the Houses of Parliament, on the east and west of this block are the Departmental buildings, and facing them all is the new Departmental building known as Langevin Block.

Among the many places and scenes of interest to tourists are Chaudiere Falls ; Rideau River and Falls ; Rideau Canal, connecting with the St. Lawrence River at Kingston, constructed in early and stormy days as a safer and quicker route to Western Ontario, for military purposes ; Nepean Point ; Rockcliffe Park ; Rideau Hall, the Governor-



Russell House, Ottawa.

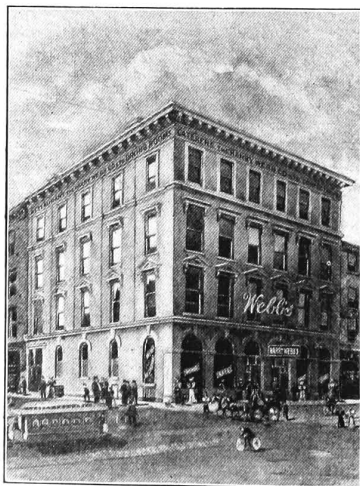
General's residence ; the adjacent summer resorts of Britannia and Aylmer, on Deschenes Lake ; Chelsea ; and the beautiful fishing resorts on the Gatineau River, reached by the Ottawa and Gatineau Railway.

Ottawa is headquarters for the Canada Atlantic Railway, and the Ottawa, Arnprior & Parry Sound Railway, mentioned elsewhere, and the Ottawa River Navigation Company. The stores, public buildings, residences and hotels are first-class ; the principal hotels, which are well equipped with all modern improvements, and are patronized by members of Parliament, tourists and business men, are the Russell, with accommodation for 450 guests ; Grand Union, accommodation for 300 guests ;

Windsor, with a capacity for 200 ; and Gilmour, accommodating 200 ; this last mentioned house is specially adapted for families.



Grand Union Hotel, Ottawa.



GOING TO TORONTO ?

The headquarters
for Tourists and
Transient Visitors is

WEBB'S RESTAURANT

Situated right in the heart of the city near the corner of King and Yonge Sts. In size and equipment it well deserves the name of

*The Largest and Most
Complete Restaurant
in Canada*

{The front elevator runs to the ladies' dining room {with} comfortable waiting {and} retiring rooms adjoining. Parcels are checked for the day free of charge.



The HARRY WEBB CO., Limited.

RESTAURANT :

66 and 68 Yonge Street.

Toronto.

CATERING ESTABLISHMENT :

447 Yonge Street.

LIST OF SOME LEADING SUMMER HOTELS IN ONTARIO.

Place, Hotel, and Name of Proprietor or Manager.	Accom.	Rates.	
		Per Day.	Per Week.
LAKE ONTARIO. —West and South of Toronto.			
Long Branch—Nine miles west of Toronto.			
Long Branch Hotel. Address, Manager or W. E. Cornell, Toronto.		1.50 to 2.00	8.00 to 12.00
Lorne Park—Fifteen miles west of Toronto.			
Hotel Louise Address, Manager		1.50	8.00 to 10.00
Grimsby Park.			
Lake View House } J. D. Strawn		{ 1.50 to 2.00	Rates on Application.
Park House }		{ 1.00 to 1.50	
Hamilton.			
Royal Thos. Hood	200	2.50 to 4.00
St. Nicholas McLean & Smyth	100	2.00	10.50
St. Catharines.			Rates on Application.
Welland House.			
Niagara-on-the-Lake.			
Queen's Royal Hotel. Henry Winnett	250	2.50 to 4.00
Hotel Chautauqua. Address, Manager	75	1.50 to 2.50	7.00 to 12.00
Niagara Falls.			
Clifton House G. M. Colburn	600	4.00	10.00 to 12.00
Windsor House Jas. Keating	50	2.00	
Park Side Inn. F. DeLacy		2.00 to 3.00	
MIDLAND DISTRICT.			
Lindsay.			
Benson House Jno. Wardrobe	75	1.50 to 2.00	10.00
Bobcaygeon.			
Rockland House. Mrs. Goulais	100	1.00 to 1.50	8.00 to 10.00
Peterborough.			
Oriental Geo. N. Graham	100	1.50 to 2.00	8.00 to 10.00
Buckhorn—(Hall's Bridge P.O.)			
Buckhorn Hotel. T. Eastwood	100	1.00
Chemong.			
Chemong Park Hotel. L. G. Fobert	70	1.00 to 2.00	7.00 to 9.00
Burleigh Falls.			
Burleigh House J. Holmes	15	1.50	5.00
Lakefield.			
Queen's Hotel R. J. Munro	25	1.25	6.00 to 8.00
Tremont House R. J. Munro	25	1.50	8.00
Young's Point.			
Carleton House W. McFarlane	30	1.00 & upw'ds.	7.00
Rice Lake.			
Jubilee Point Hotel. H. Calcutt	100	1.00	5.00
Hastings.			
Clarendon Hotel. A. B. Spellman	50	1.00 to 2.00	Special.
EAST OF TORONTO —(Lake Ontario, St. Lawrence, ence, etc.)			
Cobourg.			
Arlington Mrs. Alexander	200	2.00	10.00 to 12.00
Belleville.			
Hotel Quinte J. F. Baird	100	2.00 to 3.00
Massassaga Park Hotel. W. A. Taylor	100	1.50	7.00 to 9.00
Kingston.			
Hotel Frontenac. Thomas Crate	150	2.00 to 3.00	10.00 to 15.00
British-American " "	150	2.00 to 3.00	10.00 to 15.00
Brockville.			
Revere House J. C. Bann	75	2.00 to 2.50
Prescott.			
Daniels L. H. Daniels	75	2.00 to 3.00
Ottawa.			
The Russell F. X. St. Jacques	450	2.50 to 4.00
Grand Union H. Alexander	300	2.00
Windsor Samuel Daniels	200	2.00 to 2.50
The Gilmour F. I. Daniels	200	2.00 to 2.50	10.00 to 15.00

SUMMER HOTELS IN ONTARIO.—Continued.

Place, Hotel, and Name of Proprietor or Manager.	Accom.	Rates.	
		Per Day.	Per Week.
LAKE ERIE.			
<i>Port Dover.</i>			
Commercial D. Wadde			Rates on
Dominion J. B. Fick			Application.
<i>Port Stanley.</i>			
Fraser House D. Fraser			Rates on
<i>Kingsville.</i>			Application.
"The Mettawas" J. Fantisdel	150	4.00 to 5.00	21.00 to 28.00
LAKE HURON.			
<i>Goderich.</i>			
Bedford Hotel Robinson & Martin	150	1.50 to 2.00	10.00 to 12.00
British Exchange Thos. Tilt	45	1.00	5.00
Huron Hotel E. R. Swartz	25	1.00	5.00
International Hotel Wm. Craig	20	1.00	5.00
Park Hotel (family) Mrs. Shannon	50	1.50	7.00 to 10.00
Ocean House Capt. Wm. Babb	25	1.00	5.00
Also numbers of summer cottages to rent.			
NORTHERN DISTRICT.			
<i>Barrie.</i>			
Queen's Hotel Alf. Arnall	100	1.50 to 2.00	10.00
Barrie Hotel T. Skelsey	60	1.00	
<i>Orillia.</i>			
Orillia House James Haw	50	1.50	Rates on
Daly House F. J. Daly		1.00 to 1.50	Application.
<i>Big Bay Point—Lake Simcoe, via Barrie.</i>			
Peninsular Park Hotel The Manager		2.00	8.00 to 12.00
<i>Jackson's Point—Lake Simcoe.</i>			
Lake View House W. B. Sanders, Stouffville			Rates on
<i>Sutton West.</i>			Application.
Mansion House Jas. Sharpe	25	1.00	Special.
<i>Strawberry Island—Lake Simcoe, via Orillia</i>			
Hotel and Cottages			Rates on
<i>Owen Sound.</i>			Application.
Paterson House W. M. Matthews		1.50 to 2.00	
Shelden House F. J. Shipman		1.50	
<i>Collingwood.</i>			
Grand Central Hotel Thos. Collins		1.50 to 2.00	8.00 to 10.00
Globe Hotel John Rowland		1.50 to 2.00	8.00 to 10.00
<i>Midland.</i>			
Queen's Wm. Rodgers	50	1.00	4.00
<i>Penetang.</i>			
The Penetanguishene Patterson &		2.00 & upw'ds.	10.00 upw'ds.
<i>Moon River P.O.</i>			
Paisley			
Sans Souci J. Pearce	50	1.50	Special.
<i>Parry Sound.</i>			
Belvidere Hotel Wm. J. Bradley	150	2.00	10.00 to 12.00
Rose Point Hotel W. F. Thomson	75	1.50 to 2.00	9.00 to 12.00
<i>Gravenhurst, Ont.</i>			
Windsor Wm. McDivitt	75	1.00 to 1.50	7.00
Albion F. Wasley	50	1.00	7.00
<i>Bracebridge, Ont.</i>			
British Lion Wm. Sibbett	100	1.00 to 1.50	6.00 to 8.00
Queen's J. Higgins	150	1.50 to 2.00	Special.
<i>Beaumaris.</i>			
Beaumaris Hotel Ed. Prowse	200	1.50 to 2.00	8.00 to 12.00
<i>Milford Bay.</i>			
Milford Bay House R. Stroud	80	1.25	7.00 upw'ds.
<i>Bala.</i>			
River View House T. Currie	50	1.25	7.00
Clifton House Mrs. John Board	100	1.00	6.00
<i>Mortimer's Point.</i>			
Wingberry House Wm. Mortimer	40	1.00	6.00

Muskoka Lakes.

SUMMER HOTELS IN ONTARIO.—Concluded.

Place, Hotel, and Name of Proprietor or Manager.	Accom.	Rates.	
		Per Day.	Per Week.
Muskoka Lakes.			
<i>Port Carting.</i> Stratton House J. Fraser	50	1.25 to 1.50	7.00 upwds.
<i>Ferndale.</i> Ferndale House Seymour Penson	80	1.00	6.00
<i>Windermere.</i> Windermere House Thos. Aitken	200	1.50	7.00 to 9.00
Fife House D. Fife, jr.	75	1.25	7.00
<i>Skeleton Lake, (Aspin P.O.)</i> Newport House Brabant Bros.	50	1.50 to 2.00	8.00 to 10.00
<i>Cleveland's.</i> Cleveland's Hotel Mrs. C. J. Minett	70	1.50	6.00 to 7.00
Paignton House J. F. Pain	50	1.50	6.00
Morinus House W. D. McNaughton	40	1.00	5.00
<i>Rosseau.</i> Maplehurst Hotel J. P. Brown	100	2.00	10.00 to 12.00
Monteith House J. Monteith	150	1.25	8.00
<i>Port Sandfield.</i> Prospect House E. Cox	160	1.50 to 2.00	8.00 to 10.00
Woodington House M. Woods	60	1.25	6.00 to 7.00
Hamill's Hotel Mrs. Hamill	70	1.25	6.00 to 7.00
Craigie Lea House Miss Creigh	40		8.50 to 9.00
Stanley House J. G. Henderson	75	1.50 to 2.00	8.00 to 12.00
Gordon House (Gordon Bay P.O.) A. Winter	75	1.00 to 1.50	6.00 to 8.00
<i>Port Cockburn.</i> Summit House H. Fraser & Sons	200	1.50 to 2.00	9, 10 & 12.00
<i>Huntsville.</i> Reid House J. M. Reid	100	1.00 to 2.00	6.00 to 10.00
Vernon House John Cook	50	1.00	3.00 to 5.00
Deerhurst Hotel Manager	50	1.50 to 2.00	8.00 to 10.00
Lake View Hotel J. G. Henderson, Peninsula Lake, P.O.	50	1.00	5.00
And many others on adjacent lakes. Also private boarding houses at \$4 to \$6 week.			
<i>Burk's Falls.</i> Burk House D. F. Burk	75	1.50 to 2.00	8.00 to 10.00
<i>Lake Cecebe—Magnetawan Route.</i> Cecebe House W. A. Cowan			5.00 to 6.00
<i>North Bay.</i> Pacific W. L. Perkins	50	1.50 to 2.00	10.00

COTTAGE DIRECTORY.

COTTAGES AND LOTS TO RENT OR FOR SALE.

Location.	Owner.	Address.
Jackson's Point, Lake Simcoe.....	John Hally.....	38 Yonge st., Toronto.
" " ".....	J. W. Lawrence.....	care John Macdonald & Co., Toronto.
" " ".....	D. W. McDonald.....	Sutton West, Ont.
" " ".....	James Anderson.....	" "
" " ".....	Major J. R. Stevenson.....	" "
" " ".....	Albert Mossington.....	" "
" " ".....	Duncan McRae.....	Virginia P.O., Ont.
Port Sandfield, Muskoka.....	L. Love.....	Port Sandfield, Musk.
Rosseau, Muskoka.....	Henry Ditchburn.....	Rosseau, Muskoka.
Gravenhurst, Muskoka.....	R. Kimber Johns.....	Gravenhurst, Musk.
Forester's Island Park, Bay of Quinte. Also cottages at Lakefield, Huntsville, Goderich, etc.	Dr. Oronhyatekha.....	Toronto.

[ASSESSMENT SYSTEM]

*HEAD OFFICE:*

Cor. Richmond and Bay Streets, TORONTO, CAN.

OFFICE FOR GREAT BRITAIN—24 Charing Cross, London, Eng.

OFFICE FOR IRELAND—5 Royal Avenue, Belfast, Ireland.

OFFICE FOR UNITED STATES—6340 Monroe Avenue, Chicago, Ill.

OFFICERS OF SUPREME COURT:

ORONHYATEKHA, M.D., S.C.R., Toronto, Canada.

EDWARD BOTTERELL, P.S.C.R., House of Commons, Ottawa, Can.

HON. D. D. AITKIN, M.C., S.V.C.R., Flint, Mich., U.S.

JOHN A. MCGILLIVRAY, Q.C., S.S., Toronto, Canada.

H. A. COLLINS, S.T., Toronto, Canada.

THOMAS MILLMAN, M.D., M.R.C.S., Eng., S. Physician, Toronto.

HON. JUDGE W. WEDDERBURN, S.C., Hampton, N.B.

BENEFITS GIVEN BY THE I.O.F.

In addition to the social and fraternal privileges which a Forester enjoys by virtue of his membership in this great fraternal Order, he secures the following substantial benefits :

For himself during his lifetime :

A.—FURNISHED BY THE SUBORDINATE COURTS.

- 1.—Free medical attendance of the Court Physician within whose jurisdiction the brother is taken sick. Some Courts, in addition, furnish medicine free, as well as trained nurses, if deemed necessary by the Court.

B.—FURNISHED BY THE SUPREME COURT.

- 2.—A Sick Benefit of \$3.00 a week for the first two weeks, and \$5.00 a week for the next ten weeks, and, as provided in Section 224 (5) of the Order, \$3.00 a week for an additional twelve weeks.
- 3.—A Total and Permanent Disability Benefit of \$250, \$500, \$1,000, \$1,500, \$2,000, or \$2,500.
- For his beneficiaries at his death :
 - 4.—A Funeral Benefit of \$50.
 - 5.—A Mortuary Benefit of \$500, \$1,000, \$2,000, \$3,000, \$4,000, or \$5,000.

COST TO JOIN THE ORDER IS ONLY \$6.50 to \$12.00, ACCORDING TO AMOUNT OF BENEFIT TAKEN.

SAFEGUARD FOR MEMBERS.

The following most important legislative provision relative to the liabilities of the members was also secured in the last Act :

10. The liabilities of any member of the Society shall be limited to the assessments, dues, fees, capitation tax and fines of which, at the date at which he ceases to be a member by withdrawal, expulsion, suspension or non-payment of assessments or dues or otherwise, notice has been actually given by the Society, or which under its constitutions and laws have matured and become due ; Provided that no member, or his beneficiary, shall be entitled to any pecuniary benefit of the Society during the time such member is in default with respect to the payment of any assessments, dues, fees, capitation tax or fines ; and the provisions of this section shall be printed on each and every policy issued by the Society.

THE I.O.F. UNDER GOVERNMENT INSPECTION.

The Supreme Court makes annual returns to the Board of Trade of Great Britain and Ireland and to various Insurance Departments in Canada and the United States. The Order is subject to and has frequently received the inspection of a number of Insurance Departments.

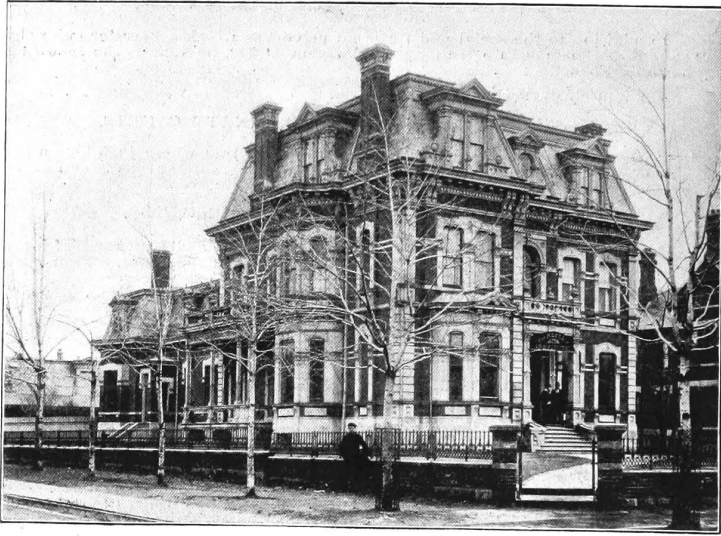
THE I.O.F. INVESTMENTS.

The Supreme Court, under the amendments to its Act of Incorporation secured from the Parliament of Canada in 1896, maintains a Government deposit of \$100,000 in Canada, also of £20,000 sterling in Great Britain and Ireland, and a deposit of \$50,000 in the United States, the balance being deposited with sound monetary institutions or invested in first mortgages upon improved real estate and in municipal securities. The following table shows where some of the funds are thus deposited :

Deposit Insurance Department, Canada.....	\$100,000 00
" " " Great Britain.....	97,333 33
" " " United States	50,000 00
Loan to New Brunswick Government.....	20,000 00
First Mortgages on Real Estate.....	1,166,320 02
Real Estate (Temple Building).....	263,600 00
Municipal and School Debentures.....	92,553 10
Various Bank Deposits.....	168,986 17

TOTAL SURPLUS 1st May, 1897 \$2,177,781.67.

The unexampled prosperity and growth of the I.O.F. are due to the fact that its foundations have been laid on a **SOLID FINANCIAL BASIS**, and every department of the Order has been managed on business principles, thereby securing for all Foresters large and varied benefits at the lowest possible cost consistent with **SAFETY** and **PERMANENCE**.



THE KEELEY INSTITUTE

582 SHERBOURNE ST., TORONTO.



WE give herewith both exterior and interior views of one of the finest of Toronto's many fine residences, now occupied under a five years' lease, by the Toronto Keeley Institute. From personal inspection of the premises, we can say that the establishment is everything that could be desired, and it is as certain to become one of the recognized institutions of the city as its mission is to carry happiness into the homes of its patients.

The Institute is operated under authority of the Leslie E. Keeley Company, of Dwight, Ill., of which Company Leslie E. Keeley, M.D., LL.D., the first man in the world to undertake the treatment of Inebriety and Narcotism exclusively from the standpoint of medicine, is the President. The success of his remedies and the system of their administration is something phenomenal. More than one hundred of these establishments have been opened on the American continent and in Europe, under the uniform name, "The Keeley Institute," the one here illustrated being the only one in Ontario, and established in January last. We are authoritatively informed that not one of the so-called "Cures" (whose failures are matter of public knowledge), which have assumed to give the Keeley treatment, has the slightest authority for the claim. They have simply imposed upon the public credulity, and weakened confidence in the possibility of cure.

That there is a cure; that the Keeley remedies, administered by the (otherwise qualified) physicians who have been instructed therein by Dr. Keeley himself -- and no other person is permitted to employ them -- do positively accom-



Reception Room, The Keeley Institut.

plish what is claimed for them, the utter and permanent removal of that craving for alcoholic liquors which constitutes inebriety, is sufficiently witnessed by the willing testimony of the more than *three hundred thousand* persons who have been patients. It is hardly less witnessed by at least five times that number of rejoicing relatives who knew only too well their former estate, and who know what it is to-day. With them it is no longer theory, but established fact. The skepticism of those who cannot abandon the old notion, that the inebriate is only a moral pervert, is swept away by absolute knowledge that medical treatment has saved them or their loved ones.

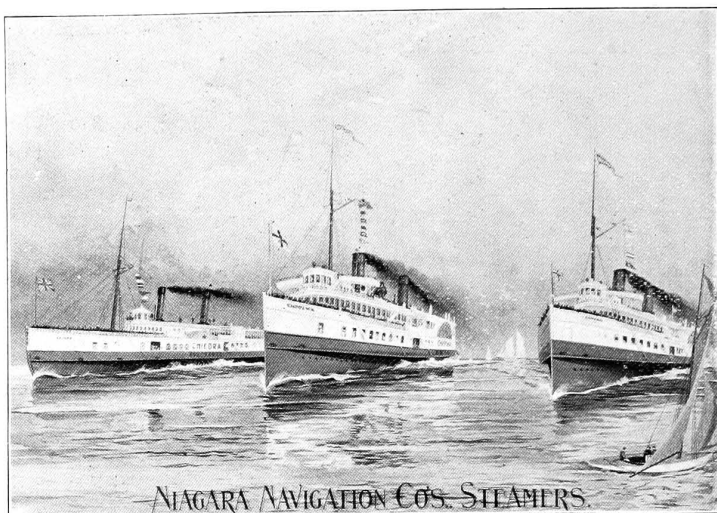
The Keeley treatment has been adopted by the U. S. Government, and is in daily use at its Soldiers' Homes and in its regular army. Several of the States have enacted "Indigent Inebriate Laws," providing the treatment for those financially unable to procure it for themselves, and with the happiest results. It has the endorsement of temperance workers like Miss Willard of the W.C.T.U., Francis Murphy, Dr. Mann of the Good Templars, and many others; and of clergymen such as Talmage, Dr. Parkhurst, Lyman Abbott (whose church, lately Henry Ward Beecher's, has established and maintains a "Keeley Cure Fund") and thousands beside. The greatest metropolitan journals have commended it in their editorial columns time and again. With evidence of this sort in its favor, there would seem to be no possible doubt of the efficacy of this treatment, as administered at "The Keeley Institute." We are informed by the Toronto management that the first patients received were upon recommendation of some of our most widely known city physicians, whose names were given us.

The Keeley literature is as interesting as a novel; it is written by some of the best-known literary men, who speak from experience, and may be had without cost by addressing

THE KEELEY INSTITUTE

582 Sherbourne Street.

TORONTO.



CHIPPEWA, CORONA, CHIYORA,
Running between Niagara, Lewiston, Queenston and Toronto.

....NIAGARA FALLS LINE....

Str. Empress of India

Daily at 7.40 a.m. and 3.20 p.m. **AND G. T. R.**
From City Wharf, foot of Yonge St., Toronto.

Connecting at **Port Dalhousie** with fast, through trains for **Niagara Falls, Buffalo, New York, etc.** Also connecting with trains for **St. Catharines, Welland, Port Colborne** and all points on the Welland Canal.

FAMILY BOOKS FOR SALE AT LOW RATES.
Lowest Rates quoted to Societies, Sunday Schools, etc., for Excursions.

ROCHESTER direct, every **Saturday Night** at 11 p.m.,
commencing **June 19th.**

Tickets and information at all the principal Ticket Offices, and at Head Office on wharf. **Telephone 260.**

FINE STATIONERY ❀ ❀

When going away for the summer be sure and take a box of

REAL ENGLISH VELLUM NOTE PAPER AND ENVELOPES

The quality is high and the price low.

PRICE, 25 Cts. PER 5 QUIRE PACKAGE

Envelopes in proportion.

DEALERS SUPPLIED BY **CANADA PAPER COMPANY, TORONTO**



MUSKOKA WHARF
Arrival of the Express.

THE MUSKOKA . . LAKES . . .

CANADA'S HIGHLANDS
AND HOW TO REACH THEM.

IMAGINE if you can a country amongst whose hills are embedded eight hundred lakes, jewelled with Islands—such a region is *MUSKOKA*.

In most minds there is a nameless charm thrown round a *terra incognita*. The fancy invests it with features of delight, and the heart longs to realize the thrills which fancy promises.

*Steamers daily from Muskoka Wharf on arrival of the Muskoka Express.
For particulars see the G.T.R. folders, or Musk. Nav. Co.'s Guide Book.*

The Palace Steamer.....

James Swift

OTTAWA, SMITH FALLS and KINGSTON.

The Tourists' Popular Route

Passing through the Matchless Scenery of
the Rideau Lakes in Daylight.

ACCOMMODATION FIRST-CLASS.

ELECTRIC LIGHTED.

HEATED BY STEAM THROUGHOUT.

The James Swift leaves Kingston every Monday and Thursday at 6 a.m. Leaves Ottawa every Tuesday and Friday at 3 p.m.

BARLOW CUMBERLAND & CO.,

Write for information and Guide Book to

Agents, Toronto.

D. NOONAN, Master and Owner, Kingston.

The ROSSIN HOUSE, CORNER KING & YORK STREETS



A. NELSON, Proprietor.



THE PALMER HOUSE, (American Plan)

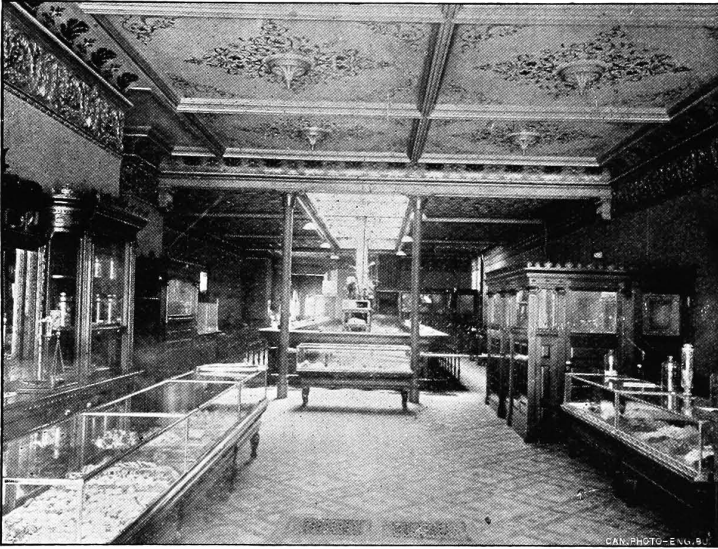
Strictly first-class. Central Location. Only three blocks from Union Station. BILLIARD ROOMS, HAIR DRESSING PARLORS, SAMPLE AND BATH ROOMS connected with the hotel. Cuisine second to none. Popular alike with tourists and commercial men. Accommodation for 200 guests. Rates, \$2 per day.

THE KENSINGTON, (European Plan)

Stands on opposite corner to Palmer House. Under same management. Equal advantages. One of the cheapest hotels in the city. Accommodation for 150 guests. Rates, 50c. to \$1.50 per day.

The Nasmith Company Limited, Toronto.

BAKERS, CONFECTIONERS, LUNCH-COUNTERS, RESTAURANTS, ETC.



LUNCH COUNTERS, ETC.,

FACTORY AND OFFICE:

Cor. Jarvis & Adelaide Sts.

51 King E.; 51 King W.
152 Yonge St.; 68 Jarvis St.
28½ Colborne Street.
170 Spadina Avenue.

CANDY FACTORY:

28½ Colborne Streets.



"This is Our Family Tent."

Telephone No. 1291.

D. PIKE,

Manufacturer of
TENTS, AWNINGS, FLACS
and SAILS, HORSE and
WAGON COVERS.

Life Preservers, Ten's to
Rent for all Purposes.

**157 King Street East,
TORONTO.**

*Different grades of Can-
vas always on hand.*

*Hoist and Wire Ropes
Spliced.*

"GOOD ALE NEEDS NO BUSH."

ROBERT DAVIES, *Manager.*

WM. ROSS, *Sec. and Cashier.*

.....THE.....
DOMINION BREWERY CO., Limited.
 Brewers and Maltsters

Manufacturers
 of the . . .
 Celebrated

**White
 Label
 Ale**

*India
 Pale Ale*
 AND
Amber Ale

**XXX
 PORTER...**

... Which is now
 taking the
 place of the best
 imported.


FOR the above
 brands we hold
 Diplomas and Gold
 Medals when compet-
 ing against the cele-
 brated brewers of the
 world.

Our Ales and Porter
 have been examined
 by the best analysts,
 and they have de-
 clared them pure and
 free from any deleter-
 ious ingredients.



Queen Street
 East
TORONTO

OUR Ales and
 Porters are
 known and
 used from the At-
 lantic to the Pacific
 and are in general
 favor.

Ask 
 for them and
 see that our brand
 is on every cork.

THERE are many
 imitations
 of our White
 Label

See that

ROBT. DAVIES'

name is on
 every label.

FRED. IVEY,

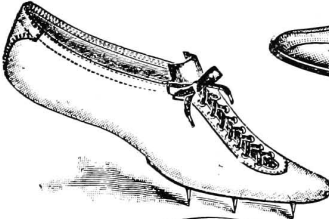
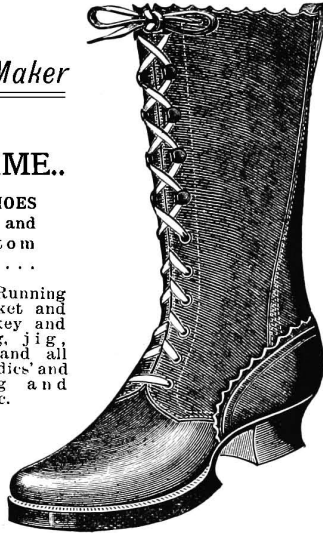
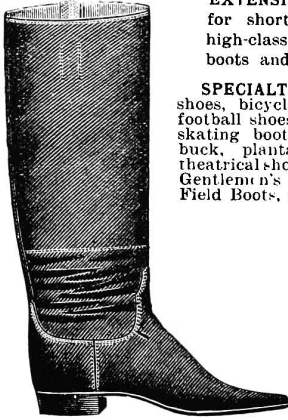
Boot and Shoe Maker

— MANUFACTURER OF —

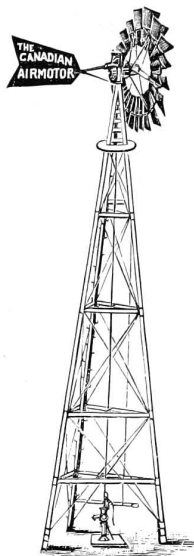
..BOOTS FOR THE LAME..

EXTENSION SHOES
for short legs, and
high-class custom
boots and shoes. . . .

SPECIALTIES :—Running
shoes, bicycle, cricket and
football shoes; hockey and
skating boots; clog, jig,
buck, plantation, and all
theatrical shoes; Ladies' and
Gentlemen's Riding and
Field Boots, etc, etc.



170 BAY ST.
TORONTO.



Mention Canadian
Summer Resort Guide.

THE ONTARIO WIND ENGINE & PUMP CO., LIMITED

Manufacturers of

Canadian (Steel) Airmotors.

the leading Windmill for
power or pumping.
Latest Improvements.

Steel Towers, (3 or 4 post),
Halladay Standard Wind-
mills

Pumps, (Iron and Wood,
Force or Lift).

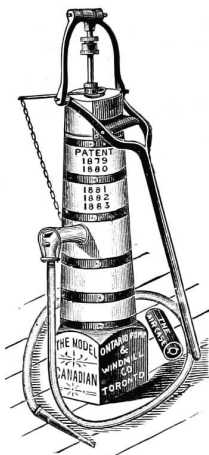
Spray Pumps of all des-
criptions.

Railway, Village and Orna-
mental Water Supply
Fixtures; Complete
Outfits.

Agents for the
celebrated

Rife Hydraulic Ram.

Haying Tools, Grinders &
Saw Tables.



If you require anything in the above line
send for Catalogue to

The ONTARIO WIND ENGINE & PUMP CO., Limited,
359 Spadina Ave., Toronto, Ont.

THE GILMOUR

Bank Street, Cor. Gilmour, OTTAWA, ONT.



Special Attention paid to Tourist and
Family Trade.

This elegant hotel has the largest and
and most luxuriously appointed rooms
of any hotel in the city. It is conducted
on the American plan. It is located in
the fashionable residence section, and
yet within a few minutes' walk of the
business district of the city.

RATES—\$2 and \$2.50 per day;
\$10 to \$15 per week.

Accommodation for 200.

Street Cars, three lines, pass the door
every five minutes.

FREEMAN I. DANIELS, Proprietor.

Sutton West, Ont., Business Directory.

HEADQUARTERS FOR SUPPLIES, ETC., FOR JACKSON'S POINT.

COTTAGERS' AND CAMPERS' SUPPLIES.

J. L. Hagerman & Co., - Sutton West, Ont.

GENERAL GROCERIES, DRY GOODS, BOOTS AND SHOES,
MILLINERY AND FANCY GOODS, CROCKERY AND FLOUR.

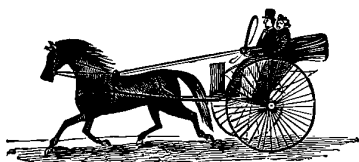
Goods delivered direct to cottage and camp every morning by wagon. All orders promptly executed.

WM. HILLIS, Sutton West, Ont.

— HEADQUARTERS FOR —

TOURISTS' and CAMPERS' SUPPLIES. Dealers in GROCERIES, DRY GOODS, CROCKERY, FLOUR and FEED, BOOTS and SHOES, ETC.

Cottagers and campers supplied direct by wagon,
to cottages and camps in neighborhood.



F. DALEY, V.S.,

SUTTON WEST, ONT.

Livery and Sale Stables.

Gladstones, Buggies, Two-seated

Traps. Buses for excursion

parties. Saddle horses.

Rigs promptly supplied for Driving Parties.

A. R. FRENCH, Sutton West, Ont.

BAKER and CONFECTIONER

Bread and all kinds of Cakes, Confectionery and Ice Cream delivered direct to cottages on lake shore daily.

ICE CREAM—Orders received for Ice Cream, delivered, packed, next day for parties, also cakes, bread, etc. Ice Cream served also at store in town.

Macdonald & Vrooman, SUTTON WEST, ONT.

Hardware and Fishing Tackle.

Fishing parties and anglers supplied with complete outfit of tackle and baits, suitable for local fishing. Hardware of all kinds, suitable for camping parties and cottagers.

F. G. TREMAYNE, Sutton West, Ont.

SUTTON'S LEADING DRUG STORE.

Full lines of Drugs, Perfumes, Toilet Requisites, Stationery, etc.

SPECIALTY:—Preparing prescriptions.

MANSION HOUSE—The leading commercial hotel. Well appointed. Rates \$1.00 per day. JAS. SHARPE, Prop., Sutton West, Ont.

Tourist . . . —PHOTOGRAPHY— Commercial.

W. J. MERTENS, Stouffville, Ont.

Branch Gallery during Summer Season at Jackson's Point.

Special attention paid to Photographing groups, cottages, scenery, etc.
Complete collection of fine views of scenery and group pictures at
headquarters. STOUFFVILLE, ONT.

WINDSOR HOTEL, GRAVENHURST, ONT.

WM. McDIVITT, - - -Proprietor.

Leading Commercial and Tourist Hotel.

This popular hotel has been refurnished throughout. Telephone and Electric Bells for the convenience of the travelling public. Only the best brands of Liquors and Cigars kept in stock. Large airy bed-rooms, and a good table. Splendid Fishing and Hunting Grounds near Hotel. Special Attention paid to Tourist Trade. *TERMS—\$1 to \$1.50 Per Day; \$7.00 Per Week.*

Commercial Rooms on First Floor.

Accommodation for 75 Guests.

ALBION HOTEL, GRAVENHURST, Ont.

Noted for its excellence of appointments and perfect comfort.

SPECIAL ATTENTION PAID TO THE TOURIST TRADE.

Only First-Class Brands of Liquors and Cigars kept in Stock.

RATES—ONE DOLLAR PER DAY, \$4.00 to \$5.00 PER WEEK.

Accommodation—50 Guests.

F. WASLEY, Proprietor.

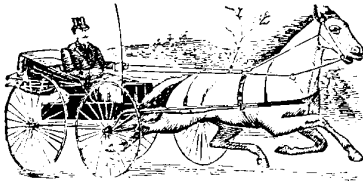
H. R. KING, Butcher, Gravenhurst.

TOURISTS CAMPS AND COTTAGES Supplied with Fresh Meats during the Season. Goods shipped by the M. N. Co.'s Boats. Freight Prepaid.

HUNTING PARTIES Provisioned for the entire hunting season. Accurate and reliable information supplied as to best localities for Deer, Bear and all kinds of Game. Mail Orders Promptly attended to.

Telephone Communication with Muskoka Wharf. PHONE NO. 27.

Contractor for Supplies for M. N. Co.'s Boats.



Established over 25 years.

J. D. BROWN

Manufacturer of

Belfast Ginger Ale and Plain Soda.

And all kinds of Carbonated Beverages. All goods made from Pure Spring Water at an elevation of 300 feet above Lake Muskoka.

Wholesale and Retail.

Campers and Cottagers Supplied Direct by M. N. Co.'s Boats.

TELEPHONE NO. 21.

BOX 55 GRAVENHURST.

Mail Orders Receive Prompt Attention.

Livery in connection. Union Bus meets all Trains and Boats, Baggage Transferred.

J. E. CLIPSHAM, Gravenhurst, Ont.

—MANUFACTURER OF—

Buggies, Buckboards, Waggon, Democrats, Runabouts, Carts Cutters and Sleighs of all Kinds.

DEALER IN

Pianos, Organs, Sewing Machines, Reapers, Mowers, Horse Rakes, Ploughs, Harrows, Hay Forks. **Tourists** Wheelbarrows kept in stock. Organs Rented for the Season. Shipped direct to Camp and Cottage by M. N. Co.'s Steamers.

B. R. MOWRY & SONS' ::: FOUNDRY

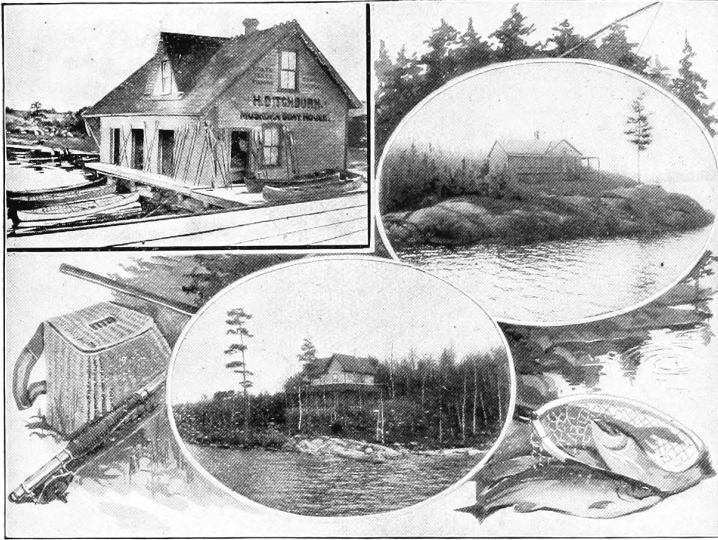
GRAVENHURST, ONT.

—Manufacturers of—

Saw and Shingle Mill Machinery and Supplies, Steam Engines and Boilers, Steam Yachts, Castings in Iron or Brass.

GENERAL MILL SUPPLIES.

REPAIRS A SPECIALTY.



*Muskoka Ry. Wharf
Boat House.*

*Invermay Summer
Cottage.*

*Bay Point Summer
Cottage.*

H. DITCHBURN,

PROPRIETOR OF

. . Boats, Tents, Yachts, Canoes and Summer Cottages . .

Has on hand for hire a good stock of boats, yachts, canoes, tents, etc., at the above Boat House ready for shipment up the lakes on arrival of train, and is well supplied at his Boat Houses, *Port Carling, Windermere, Maplehurst and Rosseau*, also at the *Penetanguishene Hotel, Georgian Bay*. Boats and Canoes kept on view for sale, also Oars, Paddles and general boating supplies. Boats built to order or put in repair, also stored for the winter at owner's risk. Address any orders by letter to

H. DITCHBURN,

Rosseau P.O., Muskoka.

COTTAGES FOR RENT—"The Pines," comprising Dining Room, Sitting Room, Kitchen and five Bedrooms. Rent for season, \$100.

"**Invermay,**" same size and rent as "The Pines."

"**Bay Point,**" Sitting Room, Kitchen and four Bedrooms, \$60.

These cottages are situated at the head of Lake Rosseau, within easy distance of the pretty village of that name, they are furnished throughout with everything necessary except bed and table linen. Families and parties desiring the romantic seclusion of cottage life in this charming locality will consult their interests and convenience by applying for further information to

H. DITCHBURN,

Rosseau P.O., Muskoka.

*Scene at Beaumaris.*

BEAUMARIS HOTEL

BEAUMARIS, MUSKOKA LAKE, ONT., CANADA.

This handsome Hotel, situated on Tondern Island (340 acres in extent, and connected with the mainland by a good bridge), occupies a location unsurpassed on the Muskoka Lakes. It is the first stopping place of the steamers of the Muskoka Navigation Company on the up-the-lakes journey, and is the great distributing centre of traffic.

FOR HAY FEVER PATIENTS there is no better spot on the continent than **BEAUMARIS**. Its elevated position, with the full sweep of the bracing breezes, render a sojourn there a perfect panacea for that disease. References from medical men and others furnished on application.

FISHING—Good bass, pickerel and Lake trout fishing can be had near the hotel.

BOATING—A large stock of first-class boats and canoes kept.

BATHING—There is a safe, well-sheltered, sandy beach close to the hotel, with a new and commodious bathing house.

DRIVING PARTIES—Good rigs and horses kept for the use of guests. Good roads to neighboring points on main land.

Steamers call twice to four times daily from all points.

LAWN TENNIS, BILLIARDS, BALL ROOM AND CONCERT HALL.

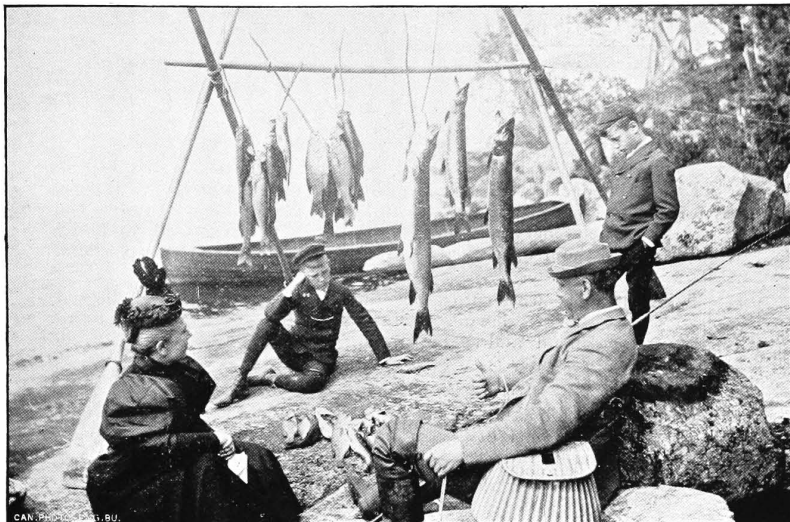
Daily Mail, Express and Post Offices in building.

Accommodation for 150 guests. Rates—\$1.50 to \$2 per day; \$8 to \$12 per week.

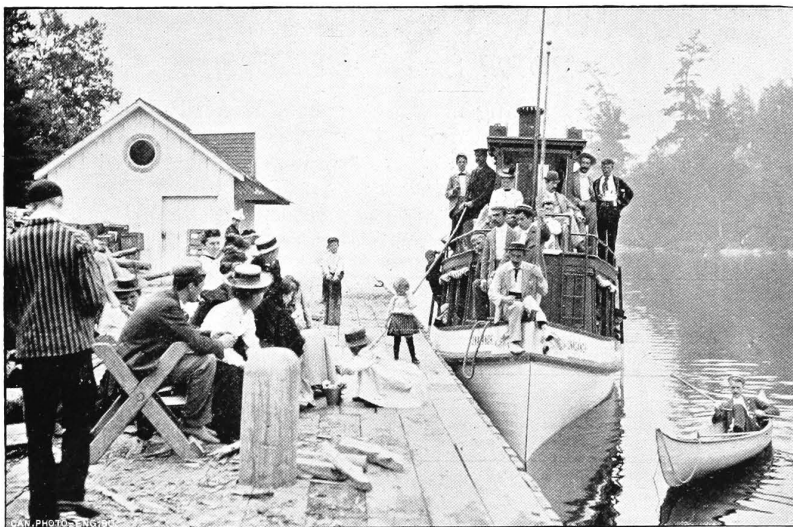
Address—

EDWARD PROWSE,
Beaumaris, Muskoka, Ontario, Canada.

SUMMIT HOUSE, PORT COCKBURN, MUSKOKA.



An Hour's Catch at Summit House.



Guests of the Summit House off for a Day's Fishing.

HAMILTON FRASER & SONS. Proprietors, Port Cockburn, Muskoka.

SUMMER SEASON, 1897.

STRATTON HOUSE, PORT CARLING MUSKOKA LAKES, CANADA.

This comfortable Family Hotel, partly remodelled, is delightfully situated, and is decidedly the most central and convenient stopping place on the chain of lakes, as visitors can get to any point and return the same day. The scenery is beautiful, air pure and invigorating. Many pretty walks in the neighborhood. Good locality for Hay Fever patients. A liberal table kept.

The Bed-rooms are comfortable and airy, and the house is heated with hot air. Tennis lawn. Suitable bathing beach for Ladies and Children near at hand, and there is a well equipped Library and Reading Room in close proximity.

Fishing consists of Bass, Pickerel and Salmon.

There is a good boat-house for the convenience of visitors. No guest with decided symptoms of consumption received. Parties leaving Toronto and Hamilton in the morning arrive here about 4 p.m. Baggage checked direct. Daily mail. Address,

JOHN FRASER,

Terms \$1.50 Per Day.

Port Carling, Muskoka, Canada.

PROSPECT HOUSE

PORT SANDFIELD, Junction of Lakes
Rosseau and Joseph.

The sanitary arrangements are good. Extensive promenade. Good Fishing, Bathing, Boating, Lawn Tennis, Billiards and Ball-room. Daily mail. All steamers call at the wharf.

TERMS:—\$1.50 and \$2.00 PER DAY.

\$7.00, \$8.00 and \$9.00 PER WEEK.

An excellent Licensed Passenger Yacht belonging
to the Hotel for the convenience of Guests. . .

EDGEWOOD HOUSE, Lake Joseph, Near Port Sandfield.

Accommodation for 20 boarders. Fine sandy beach, shady forest walks. Daily mail. THOS. JAMES, Port Sandfield.

FERN GLEN, GRAVENHURST, P. O. Box 18. Will be ready to receive guests from 1st June. First-class accommodation, charges reasonable according to requirements.

MRS. M. F. BAILLIE.

JOHNS' AGENCY, Gravenhurst, Established 1873.

For farms, business sites, building lots, islands, Tourists' residences or boarding. Furniture supplied, or any other requirements. Correspondence solicited. Accountancy, Auction and Land Agency.

JAMES HAGLEY, P.O. Box 195, Gravenhurst. Maker and Dealer in Sashes, Doors, Frames, etc., etc. Established 18 years. Mail orders a specialty.

CRAIGIE LEA HOUSE, Lake Joseph, Muskoka

Beautifully situated near entrance to Little Lake Joseph and the Joseph River. Quiet, select, sociable. Good table and appointments. Guests enjoy all the advantages of a private family. Boating, bathing, fishing, all of the best. Good bathing beaches, bathing houses and boats. Table supplied with fresh milk and garden produce. Sanitary arrangements first-class. Accommodation for 70 guests. Rates \$8.00 to \$10.00 per week. Address,

MISS J. P. CREIGH,

Craigie Lea P.O., Muskoka, Ont.

MORINUS HOUSE, LAKE ROSSEAU.

OPEN JUNE 15TH. SEASON 1897.

Good Fishing. Safe Bathing Beach. Good Deer Hunting in the Fall. Deer Leap Cliff and other points of interest in vicinity of hotel.

Daily Boat and Mail. Post Office on the premises.

Terms Moderate.

For Rates at this Hotel apply to

W. D. MCNAUGHTON,

Minett P.O., Muskoka, Ont.

Address after July 1st, Morinus P.O.

SUMMER COTTAGES TO RENT ::

Four handsome, furnished cottages, situated on picturesque points near Port Sandfield, to rent for the season. **Rent \$50.00 per annum and upwards.**

Fresh meat, eggs, milk and butter supplied to tenants direct from adjoining farm. Address,

L. LOVE,

Port Sandfield, Muskoka, Ont.

Goderich.

Views of Goderich....

**PHOTOGRAPHY, TOURIST,
AND COMMERCIAL.**

R. R. SALLOWS,

Goderich, Ont.

SPECIALTIES: — Camp Scenes, Groups, Excursion and Picnic Parties, Flash Lights and Gallery Work. Best work guaranteed.

Balmoral Cafe

J. J. WALSH,

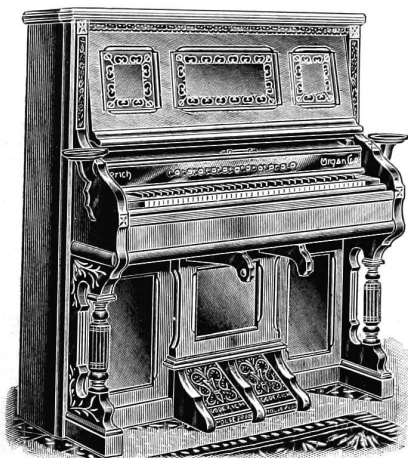
Goderich, Ont.

**ICE CREAM PARLORS, RESTAURANT, LUNCHES, FRUITS,
CONFECTIONERY, CIGARS, SODA WATER FOUNTAIN,
FRUIT DRINKS, OYSTER PARLOR.**

Handsomest and best equipped restaurant north of Toronto.

THE GODERICH ORGAN CO.

GODERICH, CANADA.



"Ideal" Piano-Cased Organ.

SPECIALTIES :

ORGANS

High Grade.

Fine Tone.

PIANO STOOLS,
PIANO CHAIRS,
MUSIC CABINETS.

Only Manufacturers of

STRICTLY

PIANO-CASED

ORGANS

In Canada.

SEND FOR CATALOGUE FREE.

THE HENDERSON BICYCLE CO., LIMITED.

GODERICH,

CANADA.



EASY
RUNNING.



DURABLE.



HIGH GRADE
ONLY.



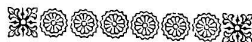
HANDSOME.



LIGHT.

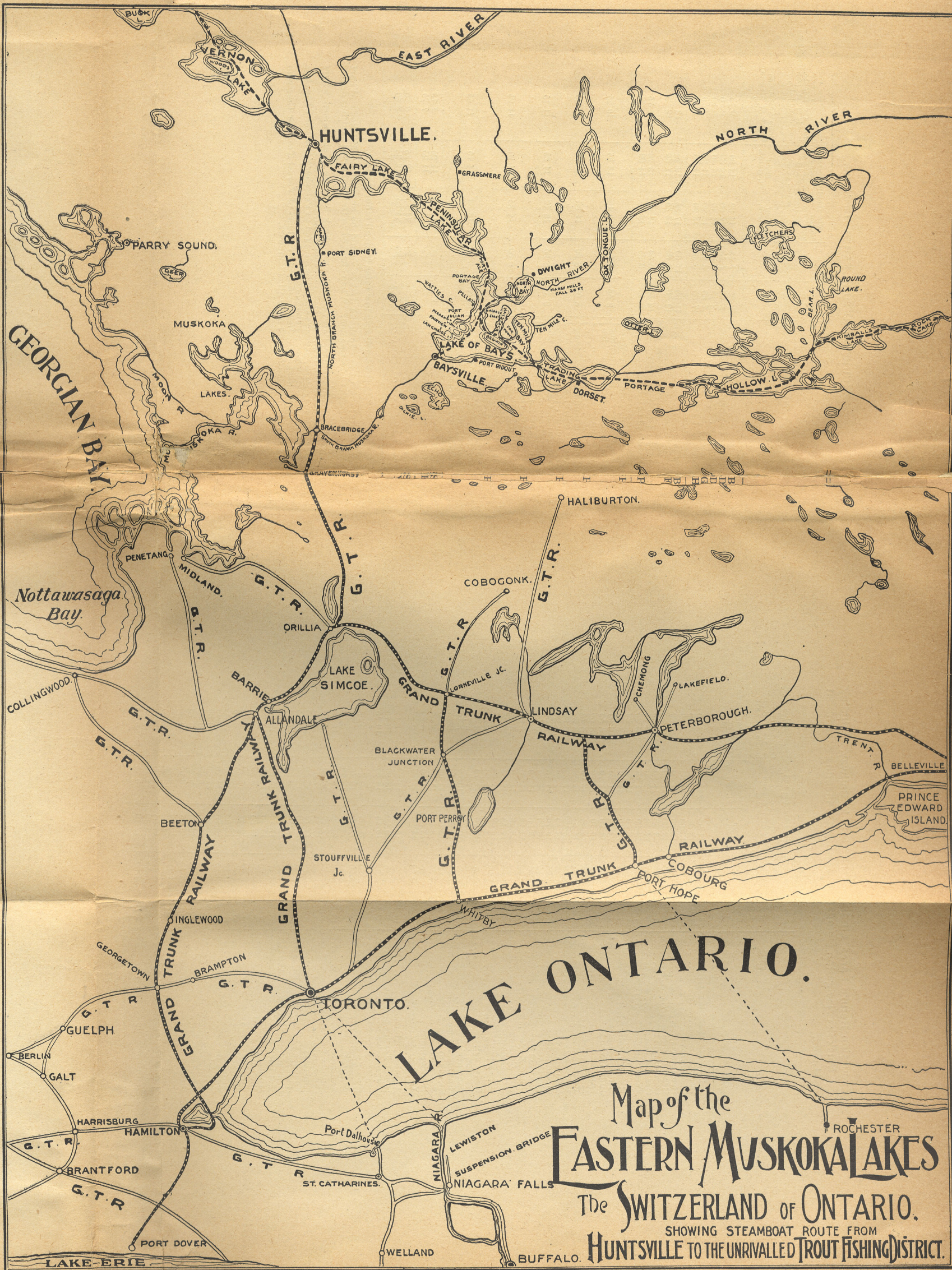


SUPERIOR IN
MECHANICAL
CONSTRUCTION.



The above are the recognized features of the
"COMMON SENSE" AND "HURON" WHEELS.

We also make the Goderich BICYCLE SULKY WHEEL, an undoubtedly high grade article. Every horseman should have one.



Excursion Return Fares on the Grand Trunk Railway, Including Muskoka Navigation Company and Other Connecting Steamboat Lines.

-TO-	From Hamilton.	From Toronto.	Via Hamilton and Beeton, via Hamilton and Toronto, or via Georgetown and Beeton.		Via Hamilton and Beeton, via Hamilton and Toronto or via Port Dalhousie and Lake.
			From Detroit.	From Pt. Huron.	
All Round Muskoka Lakes.....	\$8 80	\$7 55	\$14 95	\$12 95	\$9 75
Bala.....	7 00	5 75	13 20	11 20	8 00
Beachgrove.....	6 80	5 13	13 00	11 00	7 80
Beaumaris.....	6 80	5 13	13 00	11 00	7 80
Bracebridge.....	6 80	5 13	13 00	11 00	7 80
Cleavelands.....	7 30	6 05	13 50	11 50	8 30
Craigie Lea.....	8 30	7 05	14 50	12 50	9 25
Ferndale.....	7 30	6 05	13 50	11 50	8 30
Gregory.....	7 30	6 05	13 50	11 50	8 30
Hamilton's Point.....	7 50	6 25	13 70	11 70	8 50
Hutton House.....	7 00	5 75	13 20	11 20	8 00
Juddhaven.....	7 50	6 25	13 70	11 70	8 50
Laurie.....	7 50	6 25	13 70	11 70	8 50
Maplehurst.....	7 80	6 55	13 95	12 00	8 75
Mazengah.....	7 30	6 05	13 50	11 50	8 30
Milford Bay.....	7 00	5 75	13 20	11 20	8 00
Monyca.....	7 30	6 05	13 50	11 50	8 30
Morinus House.....	7 50	6 25	13 70	11 70	8 50
Mortimer's Point.....	7 00	5 75	13 20	11 20	8 00
Oakland Park.....	7 30	6 05	13 50	11 50	8 30
Point Kaye.....	7 00	5 75	13 20	11 20	8 00
Port Carling.....	7 00	5 75	13 20	11 20	8 00
" Cockburn.....	8 30	7 05	14 45	12 45	9 25
" Sandfield.....	7 30	6 05	13 50	11 50	8 30
" Keewaydin.....	7 00	5 75	13 20	11 20	8 00
Redwood.....	7 50	6 25	13 70	11 70	8 50
Rosseau.....	7 80	6 55	13 95	11 95	8 75
Sanitarium.....	6 10	4 85	12 30	10 30	7 10
Stanley House.....	8 30	7 05	14 45	12 50	9 25
St. Elmo.....	6 80	5 55	13 00	11 00	7 80
Terrance.....	7 00	5 75	13 20	11 20	8 00
Windermere.....	7 30	6 05	13 50	11 50	8 30
Yoho.....	7 80	6 55	14 00	12 00	8 80
Ahmie Harbor.....	10 10	8 90	16 35	14 35	11 15
Depot Farm.....	9 65	8 45	15 90	13 90	10 70
Magnetawan.....	9 40	8 20	15 65	13 65	10 45
Barrie.....	4 85	3 25	11 60	9 60	6 35
Bracebridge (Rail).....	6 15	5 00	12 40	10 40	7 25
Burk's Falls.....	8 15	6 95	14 40	12 40	9 20
Callander.....	10 10	8 90	16 40	14 40	11 15
Collingwood.....	5 60	4 50	12 10	10 25	6 75
Coboconk.....	6 35	4 35	14 85	12 35	8 70
Emsdale.....	7 80	6 70	14 10	12 10	8 95
Fenelon Falls.....	6 10	4 10	15 10	12 60	8 45
Goderich.....	5 35	6 75	8 70	6 20	7 70
Gravenhurst (Muskoka Wharf).....	5 75	4 55	12 00	10 00	6 80
Haliburton.....	8 10	6 10	17 10	14 60	10 45
Huntsville.....	7 15	5 95	13 40	11 40	8 20
Jackson's Point.....	3 80	2 20	12 35	9 85	5 75
Katrine.....	7 95	6 80	14 35	12 35	9 05
Midland.....	5 60	4 50	12 10	10 25	6 75
Nipissing.....	10 20	9 10	16 70	14 70	11 40
North Bay.....	10 40	9 15	16 70	14 70	11 35
Novar.....	7 55	6 35	13 90	11 90	8 60
Orillia to Severn, inclusive.....	5 35	4 10	11 60	9 60	6 35
Penetang.....	5 60	4 50	12 10	10 25	6 75
Powassan.....	9 60	8 40	15 95	13 95	10 65
South River.....	8 90	7 70	15 10	13 10	9 95
Sundridge.....	8 60	7 50	14 90	12 90	9 75
Trout Creek.....	9 30	8 15	15 55	13 55	10 40
Utterson.....	6 70	5 55	13 10	11 10	7 80
Waubashene.....	5 60	4 50	12 10	10 25	6 75

EXCURSION RETURN FARES.—Continued.

-TO-	From Hamilton.	From Toronto.	Via Hamilton and Beeton, via Hamilton and Toronto, or via Georgetown and Beeton.		Via Hamilton and Beeton, via Hamilton and Toronto, or via Port Dalhousie and Lake.
			From Detroit.	From Pt. Huron.	
Gravelly.....	8 65	7 45	14 90	12 90	9 70
Gravelly or Colebridge.....	8 65	7 45	14 90	12 90	9 70
Wright.....	8 15	6 95	14 40	12 40	9 20
Wassmore.....	7 65	6 45	13 90	11 90	8 70
Wassmore and Portage.....	7 65	6 45	13 90	11 90	8 70
Young Inlet.....	11 00	11 00	17 85	16 20	13 25
French River.....	12 00	12 00	18 85	17 20	12 25
" (Tickets on sale July 1st to Aug. 31st).....	10 50	10 50	17 35	15 70	11 75
Parry Sound (All Rail).....	10 45	9 25	16 90	14 90	12 45
Parry Sound, going via Muskoka Lakes and returning via Georgian Bay or vice versa (meals extra).....	8 55	8 00	15 45	13 55	10 25
Parry Sound, via N. S. N. Co. and Midland and Penetang (meals extra).....	8 00	8 00	14 85	13 20	10 25
Parry Sound, going all rail, returning via N. S. N. Co. and Midland or Penetang (meals extra).....	9 50	8 95	16 10	14 25	11 15
Parry Sound, via Midland and Collingwood, and G. N. T. Co. or N. S. N. Co. (meals included).....	9 00	9 00	15 85	14 20	11 25
Parry Sound, going all rail, returning via G. N. T. Co. and Midland or Collingwood, or N. S. N. Co. and Collingwood (meals incl.).....	10 00	9 40	16 60	14 75	11 65
Turgeon Point.....	5 45	3 60	14 45	11 95	7 75
Turgeon Point, via Lindsay.....	5 70	4 10	14 45	11 95	7 75
Long Lake.....	5 90	4 30	14 85	12 35	8 20
Long Point.....	5 55	3 95	14 85	12 35	8 20

Correspondingly low rates from all other stations.

BAGGAGE:—For the Muskoka Lakes should be checked to Muskoka Wharf direct, or through to destination. When checked to Gravenhurst vexatious delays are liable to occur.

For the Soo, Mackinac, Parry Sound, etc., check baggage to steamboat wharf (not the station) at Collingwood, Midland, Penetang, etc.

For Chemong Park, baggage should be checked to Peterboro' Station where bus meets trains for passengers and baggage.

For Toronto, checks may be transferred to officers of Verral Transfer Co., who board all incoming trains, and meet all steamboats.

Grand Trunk Railway System



THE GREAT COMMERCIAL HIGHWAY.

4,186 MILES *OF TRACK, UNDER ONE MANAGEMENT, Between
the Atlantic and Chicago and Milwaukee.*

Passing through all the Principal Cities and Towns of Canada, viz.: Windsor, Chatham, London, Hamilton, Toronto, Kingston, Montreal, Quebec and Halifax; and reaching the principal points in the United States — Chicago and West via the famous St. Clair Tunnel; Buffalo, Rochester, New York, Philadelphia, etc., via the magnificent International and Suspension Bridges; and Boston, Portland and Atlantic Coast Cities via the World-renowned Victoria Tubular Bridge

The Tourists' Favorite Line

No other line can bring within your reach so many attractions. Call on the nearest agent of the Grand Trunk Railway System for Folders and Tourist Guides, or apply to

M. C. DICKSON, Dist. Pass. Agent, Toronto, Ont.

D. O. PEASE, Dist. Pass. Agent, Montreal, Que.

L. R. MORROW, City Pass. and Ticket Agent, 108 South Clark St., Chicago.

F. P. DWYER, Eastern Pass. Agt., 273 Broadway, New York City.

R. McC. SMITH, Southern Pass. Agent, 417 Walnut St., Cincinnati, Ohio.

CHAS. M. HAYS,
General Manager.

GEO. B. REEVE,
General Traffic Manager.

W. E. DAVIS,
Gen'l Pass. & Ticket A

GENERAL OFFICES, MONTREAL, P.Q.

GRAND TRUNK RAILWAY SYSTEM

PRINCIPAL AGENCIES.

Full information as to Tickets, Sleeping Car Fares, etc., may be obtained from any agent of the Grand Trunk Railway and its connections. The addresses of District and Principal Ticket Agencies of the Grand Trunk Railway Co. only are shown below :

Berlin, Ont. —Geo. D. LaCourse.	Montreal, P.Q. — A. Joyce, City Ticket Agent, 137 St. James Street.
Belleville, Ont. —U. E. Thompson.	New York, N.Y. — F. P. Dwyer, E.P.A.G.T.R., 273 Broadway.
Boston, Mass. — T. Wynne, Trav. Pass. Agent, 194 Washington Street.	Niagara Falls, N.Y. — Isaac J. Van Allen, 120 Falls Street. D. Isaacs, Prospect House.
Buffalo, N.Y. — J. D. McDonald, City Pass. and Ticket Agent, 177 Washington Street.	Niagara Falls, Ont. — G. M. Colburn, Clifton House.
Chatham, Ont. —W. E. Rispin.	Ogdensburg, N.Y. — J. H. Phillips, Ticket Agent, 62½ Ford Street.
Cincinnati —R. McC Smith, Southern Pass. Agent, 417 Walnut Street.	Oshawa, Ont. —R. C. Carter.
Cobourg, Ont. —M. A. Hawley.	Peterboro', Ont. —W. Bunton.
Chicago, Ill. — E. H. Hughes, A.G.P. & T.A., 103 South Clark Street.	Port Hope, Ont. —S. Paterson.
Detroit, Mich. — Ben. Fletcher, Trav. Pass. Agent. C. C. Craigie, Trav. Pass. Agent, 84 Woodward Avenue.	Portland, Me. —N. J. Grace, Trav. Pass. Agt., G.T.R., Station.
Galt, Ont. —M. N. Todd.	Quebec, Que. — J. W. Ryder, City Ticket Agent, 5 Du Fort Street and Ferry Landing, Dalhousie Street.
Hamilton, Ont. — Charles E. Morgan. 11 James Street North.	St. Catharines, Ont. —A. Christie.
Kingston, Ont. —J. P. Hanley.	St. Thomas, Ont. —S. O. Perry.
London, Ont. — Edward De la Hooke. Cor. Richmond and Dundas Streets.	Sarnia, Ont. —J. S. Symington.
London, Eng. — H. C. Flockton, City Ticket Agent. 22 Leadenhall Street, E.C.	Toronto, Ont. M. C. Dickson, Dist. Pass. Agent, C. W. Graves, Trav. Pass. Agent, Union Station, Toronto. W. Keating, City Ticket Agent, 1 King Street West.
Montreal, P.Q. — D. O. Pease, Dist. Passenger Agent. J. Quinlan, Trav. Passenger Agent. Bonaventure Station.	Whitby, Ont. —E. Stephenson.
	Windsor, Ont. —A. M. Stewart.
	Woodstock, Ont. —J. A. McKenzie.

CHAS. M. HAYS,

Gen. Manager.

MONTREAL.

GEO. B. REEVE,

Gen. Traffic Man.,

MONTREAL.

W. E. DAVIS,

Gen. Pass & Ticket Agt.,

MONTREAL.

GEO. T. BELL,

Asst. Gen. Pass. & Ticket Agt.,

MONTREAL.

E. H. HUGHES,

Asst. Gen. Pass. & Ticket Agt.,

CHICAGO.

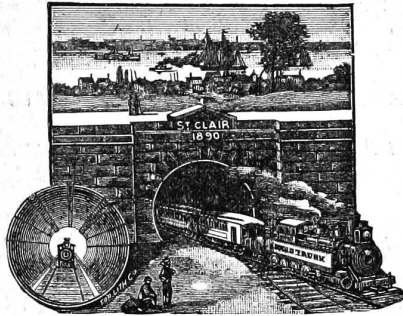
GRAND TRUNK RAILWAY SYSTEM

The Great International and Double Track Route

REACHING

ALL
CANADIAN
POINTS.

London
Hamilton
Toronto
Montreal
Quebec
Halifax
Etc.



And in
United States

Chicago
and West
Detroit
Buffalo
New York
Boston
Portland
Etc.

THE POPULAR TOURIST LINE

.. TO ..

*Niagara Falls
Thousand Islands
Rapids of the St.
Lawrence.*

The Georgian Bay
AND
Muskoka Lake Regions
THE
Highlands of Ontario

*Gulf Resorts
Saguenay River
Atlantic Coast*

BEST
SPOTS
FOR
FISHING,

Equipped with the
Finest Day Coaches,
Pullman and Wagner
Drawing - Room and
Sleeping Cars.

BOATING,
BATHING
AND
CAMPING

M. C. DICKSON, District Passenger Agent, Toronto.

CHAS. M. HAYS,
Gen. Manager.
MONTREAL.

GEO. B. REEVE,
Gen. Traffic Man.,
MONTREAL.

W. E. DAVIS,
Gen. Pass. & Ticket Agt
MONTREAL.

GEO. T. BELL,
Asst. Gen. Pass. & Ticket Agent,
MONTREAL.

E. H. HUGHES,
Asst. Gen. Pass. & Ticket Agent
CHICAGO.

ESTABLISHED 1864.**DANIELS'
HOTEL****L. H. DANIELS,
PROPRIETOR.****PRESCOTT, ONTARIO**

REBUILT IN 1894 AT A COST OF \$10,000.

First-class in all its appointments. Spacious Parlors, Pleasant and Cheerful
Sleeping Rooms, Magnificent Billiard Hall and Fine Sample Rooms.
Electric Bells throughout the House and lighted
by Electricity.

SANITARIAN ARRANGEMENTS UNSURPASSED.

*The Block adjoining is now added, and the DANIELS' is now one of the
largest and most complete Hotels in Canada.*

Travellers visiting the Capital, only fifty-four miles distant, or those desiring a
day's lay off, will find every comfort and convenience at this well-managed Hotel.

STONY LAKE DISTRICT
Queen's Hotel**LAKEFIELD,** NEAR THE
OTONABEE RIVER.*.. The Best Commercial and Tourist Hotel in Town...*

Tourists should take the 'Bus to the QUEEN'S HOTEL when
visiting Lakefield.

FIRST-CLASS TABLE AND BAR.

Excellent Boating, Bathing and Fishing. Telephone Connection
and Modern Conveniences.

R. J. MUNRO, Proprietor.**TOURIST . . PHOTOGRAPHY COMMERCIAL**

High-class Photos—Flash-Lights of Parlors, Balls and Parties. Crayons,
Bromide Enlargements, Water Colors, India Ink, Etc.
Trade Work a Specialty.

Prices Moderate and Satisfaction Guaranteed.

A. A. GRAY & CO., 561 QUEEN STREET WEST
TORONTO.

STANDARD MINING STOCKS ONLY

E. L. SAWYER & CO.

(Successors to Sawyer, Murphey & Co.)

MINING BROKERS

OFFICES:

CANADA LIFE BUILDING

~
TORONTO, ONT.

MONTREAL, QUE

ROSSLAND, B.C.

SPOKANE, WASH

TORONTO, ONT.

Correspondence solicited and information
cheerfully given relative to any
standard stocks.



ALSO AGENTS OF THE EASTERN MINING SYNDICATE, THE
STRONGEST AND BEST DEVELOPMENT COMPANY IN CANADA.

INDEX TO DESCRIPTIVE MATTER.

	PAGE		PAGE
Toronto.....	7-23	<i>Muskoka Lakes—</i>	
Jack-on's Point and Sutton West. . .	21-34	Gordon Bay.....	48
<i>Northern Lakes of Ontario—</i>		Port Cockburn.....	49
Peninsular Park.....	31-35	Windermere.....	49-51
Penetanguishene.....	35-36	Newport House.....	52-53
Sans Souci.....	36-37	Huntsville.....	54-60
Rose Point.....	37-39	Burk's Falls.....	60-61
Parry Sound.....	40-42	<i>Lakes Huron, Erie and Ontario</i> ..	61-68
Gravenhurst.....	42-43	Goderich.....	61-67
<i>Muskoka Lakes—</i>		<i>Midland Lakes</i>	68-69
Beaumaris.....	45	Jubilee Point.....	69
Clifton House.....	45-46	Foresters' Island Park.....	69-71
Port Carling.....	46	Kingston-Ottawa Trip.....	71-72
Port Sandfield.....	46-47	Ottawa.....	72-74
Craigie Lea.....	48	Summer Hotels and Cottages.....	75-77

INDEX TO ADVERTISEMENTS.

	PAGE		PAGE
Balmoral Cafe, Goderich.....	85	Ivey, Fred., Toronto (Sporting Boots)...	87
Beaumaris Hotel, Muskoka.....	82	James Swift St'r, Kingston-Ottawa ..	83
Canada Paper Co., Toronto.....	82	Keeley Institute, Toronto.....	80-81
Daniels' Hotel, Prescott.....	100	MacWillie Bros., Toronto (Supplies)...	2
Ditchburn, H., Muskoka (Boats).....	91	Muskoka Navigation Co.....	83
Dom. Brewery Co., Limited, Toronto..	86	Muskoka Resorts.....	91-95
Excursion Lines and Rates.....	3	Nasmith Co., Toronto (Restaurants)...	85
Farr, J. H. & Co., Toronto (Varnishes)..	1	Niagara Navigation Co.....	82
Fish and Game Laws (Ontario).....	3	Niagara Falls Line.....	82
Gilmour Hotel, Ottawa.....	88	Ontario Wind Engine and Pump Co. (Limited), Toronto.....	88
Goderich Organ Co., Goderich.....	96	Palmer and Kensington Hotels, Toronto	84
Grand Trunk Railway System.....	97-99	Pike, D., Toronto (Tents, Awnings, etc.)	85
Gravenhurst Business Houses.....	90	Port Cockburn, Muskoka.....	93
Gray, A. A., & Co., Toronto (Photos) ..	100	Queen's Hotel, Lakefield.....	100
H. Webb Co. (Limited), Toronto (Rest'nt)	74	Rossin House, Toronto.....	84
Henderson Bicycle Co. (Limited), God'ch	96	Sallows, R. R., Goderich (Photos).....	95
Independent Order of Foresters (Assess- ment System).....	78-79	Sutton West Business Houses.....	89

*The Paper in this Guide is the Celebrated PHOTO BOOK, made by THE CANADA
PAPER COMPANY (Limited). of Toronto and Montreal.*

INDEPENDENT ORDER OF FORESTERS

SOME SOLID FACTS

THE MAGNIFICENT BENEFITS PAID

Benefits paid last year (1896).....	\$ 820,941 91
Benefits paid last five years.....	2,754,039 14
Benefits paid last ten years.....	3,462,142 79
Benefits paid since organization (to April 3, 1897).....	4,432,347 28

THE GROWTH OF THE MEMBERSHIP

Membership 1st July, 1881	367	Date of Reorganization.	
Membership 31st Dec., 1881	1,019	Increase, 6 months	652
Membership 31st Dec., 1886	5,804	Increase, 5 years	4,785
Membership 31st Dec., 1891	32,303	Increase, 5 years	26,499
Membership 31st Dec., 1896	102,838	Increase, 5 years	70,535

THE INCREASES LAST YEAR (1896)

Increase in Benefits paid.....	\$ 135,941 73
Increase in Assessment Income.....	228,932 00
Increase in Total Income.....	347,901 19
Increase in Net Assets.....	438,114 34
Increase in Surplus Funds.....	455,110 92
Increase in Insurance in Force....	20,763,500 00

THE MEMBERS AND THEIR ASSURANCE

AT 31st DECEMBER EACH YEAR

Year.	Total Membership	Insurance Carried.	Total Surplus.	Surplus Per Capita.	Death Rate per 1,000
1881	1,019	\$1,140,000	4,568 55	\$1 48	4.50
1882	1,134	1,276,000	2,967 93	2 61	11.00
1883	2,210	2,490,000	10,857 65	4 91	4.73
1884	2,558	2,923,000	23,081 85	9 01	4.23
1885	3,642	4,283,000	29,802 42	8 18	7.76
1886	5,804	6,764,000	53,981 28	9 30	4.85
1887	7,811	9,120,000	81,384 41	10 44	5.78
1888	11,800	13,714,000	117,821 96	9 98	6.43
1889	17,349	20,078,000	188,130 36	10 84	5.85
1890	24,604	28,498,000	283,967 20	11 54	5.18
1891	32,303	39,395,000	408,798 20	12 65	6.40
1892	43,024	53,243,000	580,597 85	13 19	6.25
1893	54,484	67,781,000	858,857 89	15 76	5.47
1894	70,055	86,506,500	1,187,225 11	16 94	5.47
1895	86,521	108,027,500	1,560,373 46	18 03	5.67
1896	102,838	128,791,000	2,015,484 38	19 60	5.50

The I.O.F. is doing business in the Dominion of Canada, in the United States, and in Great Britain and Ireland.

