



CANADIAN  
SUMMER  
RESORT  
GUIDE



## Summer Excursion Lines and Rates from Toronto.

**Niagara River Line** connecting with New York Central, Michigan Central, and Falls Electric Railways. The magnificent steamers *Chippewa*, *Chicora* and *Corona* make four round trips daily to Niagara (32 miles), Lewiston and Queenston (40 miles). Fare, one way, \$1.25; round trip, \$2.00; round trip excursions, returning same afternoon, special rates; family book tickets (twenty round trips), ten dollars.

**Niagara Falls Line**—*Empress of India* to St. Catharines (32 miles), two round trips daily. Fare, one way, 75 cents; round trip, \$1.25; round trip excursion, 50 cents; book tickets (twenty round trips), \$8.00; Falls, \$1.45; return \$2.50; Buffalo, \$2.00, return, \$3.20.

**Hamilton Steamboat Line**—*Modjeska* and *Marussa* two trips each, daily, to Oakville (21 miles), Burlington Beach (30 miles), and Hamilton (36 miles). Fare, one way, 75 cents; round trip, \$1.25; round trip excursion, 50 cents; book tickets, (ten round trips), five dollars.

**The Toronto Ferry Co's** Island Ferries run from 6.30 a. m., until 11 p. m., at intervals of ten to fifteen minutes. Fare each way, five cents, or 150 tickets for \$5.

**Richelieu and Ontario Nav. Co.** to Montreal, 1,000 Islands, Quebec and the Saguenay.

**Great Northern Transit Co. & North Shore Nav. Co.** through 30,000 Islands of Georgian Bay to the Soo and Mackinac.

**Muskoka Navigation Co.** to Mus-koka Lakes and Magnetawan River.

Special Boats to Long Branch and Lorne Park (8 and 15 miles west), Victoria Park (6 miles east), Grimsby Park (36 miles).

**Baggage.**—Tourists and passengers to Toronto by boat or rail will consult their convenience by availing themselves of the services of the Verral Transfer Company's officers, who board all incoming trains and meet all steamers, and will take charge of baggage checks, thus relieving passengers of any further trouble in looking after the forwarding of their effects.

### CLOSE SEASONS FOR FISH AND GAME.

#### *Province of Ontario.*

**FISHING**—Salmon trout and white fish, Nov. 1 to Nov. 30th, both days inclusive; fresh water herring, Oct. 15th to Nov. 30th; speckled trout, Sept. 15th to May 1st; brook and river trout, Sep. 15th to Jan. 1st; bass, April 15th to June 15th; pickerel, April 15th to May 15th; maskalonge, April 15th to June 15th. *Special Provisions*—Bass may be taken by hook and line only; not more than twelve may be caught in one day by any tourist. All bass under ten inches long must be returned to the water. Speckled Trout—Hook and line only allowed to be used; 50 only may be caught in any one day; 15 lbs. weight may be taken in any one day; trout 5 inches in length or under must be returned to the water.

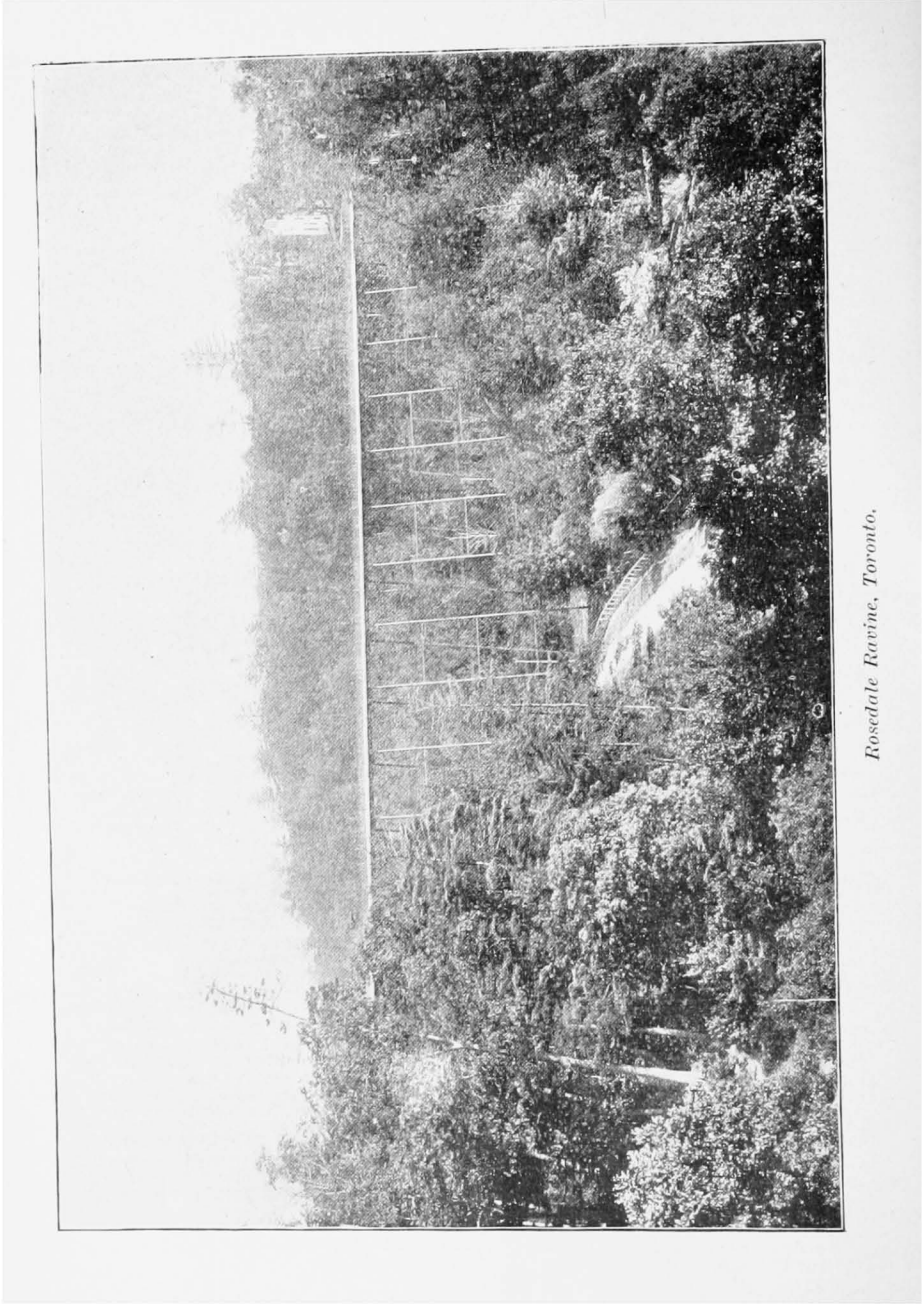
**NOTE**—*Sportsmen from foreign countries are not charged any license for fishing in Canadian waters when Canadian Boats and Guides are employed.*

**HUNTING**—No quail shall be taken or killed between Dec. 15th and Oct. 15th following. Grouse, pheasants, partridges, between Dec. 15th and Sept. 15th; swans or geese, May 1st to Sept. 15th; woodcock, snipe, plover, duck, Dec. 15th to Sep. 1st; beaver may not be killed until Nov. 1st, 1897; muskrat, May 1st to Jan. 1st, but muskrat may not be shot during month of April; otter may not be killed until Nov. 1st, 1897. No person can take more than 40 ducks in any one season. Snipe, woodcock and partridge may not be sold, bartered or exchanged in Ontario, no matter where taken or procured, until Oct. 15th, 1897. Moose, elk, reindeer and caribou may not be killed until Oct. 20th, 1896. Deer, close season, Nov. 15th to Nov. 1st of year following.

**SPORTSMEN**—For sportsmen in parties of five or more travelling together on the going journey on hunting or fishing expeditions, return tickets, good for one month, will be issued at single first class fare and a third, and two hundred (200) pounds baggage, consisting of wearing apparel and sportsmen's outfit, such as tents, camp utensils, etc., including a fish or game catch of 50 lbs. in weight, will be carried free for each *bona fide* sportsman. One dog will be carried free in the baggage car, for each sportsman, but all dogs in excess of this allowance, will be charged for at regular rates. Guns in wooden, canvas or leather cases may be taken into passenger cars, but if not so protected they must be conveyed in the baggage car, at the owner's risk. Canoes, skiffs and other boats will not be taken in the baggage car, but must be forwarded by freight train or by Express. The foregoing fares and arrangements apply only to Cobourg, Penetang, Orillia, and all points north of Orillia to North Bay; to all stations on the Midland Division north of but not including Agincourt, Myrtle, Millbrook, and Belleville, inclusive.

**TROLLING**—Trolling for salmon trout begins about the 24th of May and lasts about two weeks. The Indians think the best time in spring is while the blossoms are on the wild plum trees. In the fall it begins about the middle of October and lasts about the same time. Bass, pickerel and maskalonge will take the spoon freely during the period allowed by the Game Laws.

In the warm weather the salmon trout keep close to the bottom. It is then necessary to use a line 200 or 300 feet long, with about two pounds of a sinker so that the bait may reach a great depth.



*Rosdale Ravine, Toronto.*

Canadian . . . .  
Summer Resort  
. . . . . Guide

---

ILLUSTRATED SOUVENIR

AND

: : : GUIDE BOOK : : :

OF

Some of the Principal Resorts

AND

Tourist and Excursion Routes of Canada

*WITH MAPS, AND TABLES OF RAILWAY AND STEAMBOAT FARES  
AND CONNECTIONS, HOTEL RATES, ETC.*

THIRD EDITION.

*Edited and Published by FREDERICK SMILY, Toronto.*

---

TORONTO:

MURRAY PRINTING COMPANY,

1896.

---

Entered according to Act of Parliament of Canada, in the year of Our Lord One Thousand Eight Hundred and Ninety-six, by FREDERICK SMILY, in the Office of the Minister of Agriculture, at Ottawa.

## : : Preface : :



**I**T is with some sense of pleasure and satisfaction that the Third Edition of the CANADIAN SUMMER RESORT GUIDE is placed before the travelling public.

That our endeavors during the past few years to supply interesting and reliable information as to the various summer resorts of this country, has been appreciated both by tourists and those who cater to the tourists' pleasure and comfort, we have had abundant testimony and assurance.

The object sought in this work has been to convey to our readers an idea of some of the many enjoyable excursion routes, and tourist, fishing and hunting districts, with which Canada abounds, and to demonstrate as far as is possible with pen and camera, that in few countries are there to be found such beauties of landscape, such a healthful and invigorating climate, and such abundant sport with gun and rod, as in Canada.

It needs but a brief trip through some of the scenes herein depicted to convince the most sceptical of the truth of the above statement, and those who come once, come again.

While the descriptions given of the various resorts and routes have been necessarily brief (many charming localities being merely mentioned), they may be safely taken as an index to the manifold charms and beauties of this "Summerland," of which it may be said with the immortal bard that

"Age cannot wither nor custom stale her infinite variety."

FREDERICK SMILY.

TORONTO, May, 1896.

# Canadian Summer Resort Guide.

## TORONTO.

YEAR by year this beautiful metropolis, with its proudly distinctive title, "The Queen City of Canada," is becoming more and more popular

as the objective point for tourists, excursionists and important conventions.



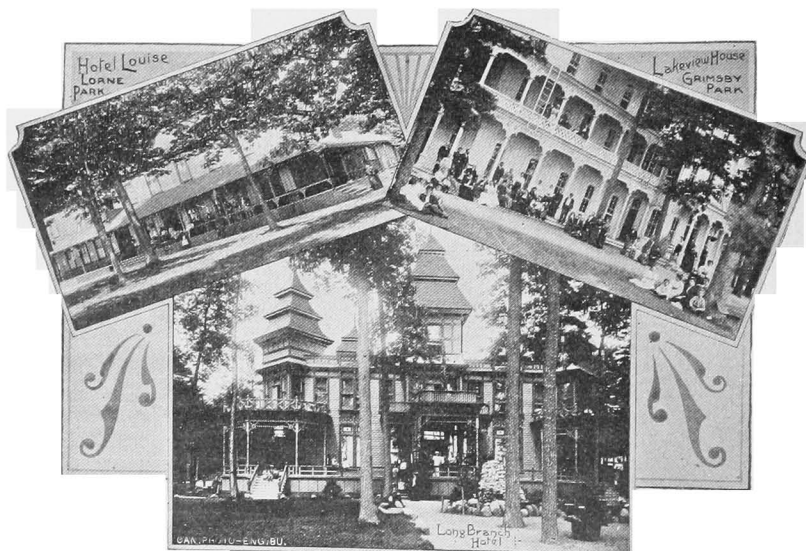
*Board of Trade Building.*

Nor is this to be wondered at, for even the casual visitor cannot but be impressed with the manifold beauties of this city of homes, with its avenues of shade trees lining the residential thoroughfares : its stately mansions or cosy cottages, each alike surrounded by lovely gardens with flowering shrubs and well trimmed lawns. Torontonians are proud of their beautiful homes, and justly so, for it is largely due to the individual care bestowed upon them that this

city is so attractive to our summer visitors ; not this alone, however, for the "city fathers" with commendable forethought, have provided for the present and future generations, as breathing places, beautiful parks, public gardens, and squares, the lungs of a city, destined ere long to feel the throbbing heart of a mighty commerce.

Toronto is also specially favored as to its environments : leaving the more central portions of the city, and travelling north, east, or west, by trolley car, the visitor is quickly transported to scenes of wilder beauty ;

to the north and north-east are rugged ravines of picturesque grandeur, their steep slopes clothed with fragrant pines and evergreens, and carpeted with moss, ferns and wild flowers; the winding valleys threaded by walks and drives, where rippling creeks, with nature's sweetest music, murmur their way to the placid Don River to be borne to the broad bosom of Lake Ontario; these, known as the Rosedale ravines, intersect the streets of one of the prettiest residential portions of the city, and are spanned by graceful iron bridges at the main thoroughfares. To the east on the outskirts of the city, and on the lake front, are the popular Victoria Park, Scarboro' Heights, Kew Beach and Balm Beach, many of

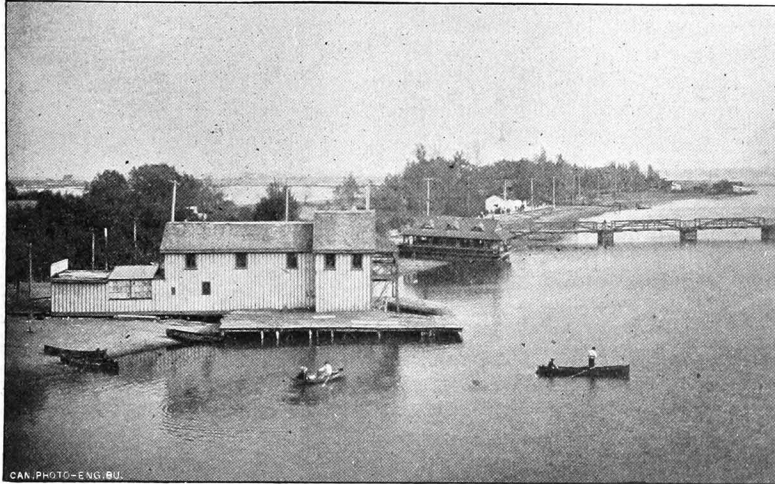
*Lorne Park.**Long Branch.**Grimsbey Park.*

Toronto's fashionable residences being located at the two last named resorts. Bordering on the western limits of the city are the Exhibition Grounds; High Park, the people's playground; beyond is the beautiful Humber River; and yet further west, by the Lake Shore section of the street railway system, lies Long Branch, one of the most popular summer resorts near Toronto; Lorne Park is still west of this, and is reached by boat or railroad. All the above named places, with the exception of Lorne Park, can be reached by street car.

To the south of the city, across the beautiful natural harbor, nearly two miles in width, by about four long, is Toronto Island, the popular resort of thousands of citizens and strangers, while the beautiful harbor

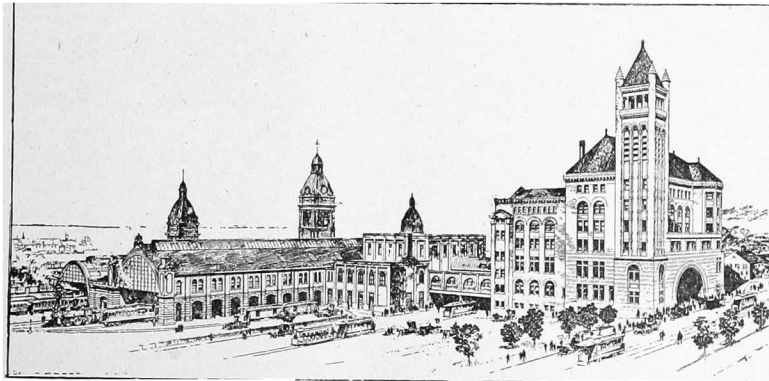


known as Toronto Bay is a constant scene of life and animation, an ever varying panorama of ferry boats, excursion steamers, yachts, row boats and canoes.



*At Haulan's Point, Toronto Island.*

With all these attractions and advantages, and from its position on the north shore of Lake Ontario (one of the finest fresh water lakes in the world) with a protecting background of pine clad hills, a beautiful



*New Union Station.*

climate and picturesque scenery, Toronto possesses undoubted claims as a natural and ideal summer and health resort.

As an educational city, with its universities, schools and colleges of various denominations, conservatories of music, fine churches and places of high-class amusement and instruction, art schools, etc., Toronto is specially favored.

As an industrial and manufacturing centre Toronto has claims to special recognition, her safe harbor and fine docks affording first-rate facilities for shipping, while with the excellent accommodation afforded by the fine new Union Station (the joint enterprise of the Grand Trunk and Canadian Pacific Railways), and with every convenience for handling



*In Queen's Park.*

freight and passenger traffic, this city, as a distributing point, is most favorably situated and equipped.

Toronto, besides its claims on the tourist, by virtue of the numerous attractions in the city and neighborhood, is the recognized centre for tourist excursion routes, by rail and boat, to the finest hunting, fishing, and summer resorts in America: these will be dealt with later on in this work.

#### A SUMMER RESORT.

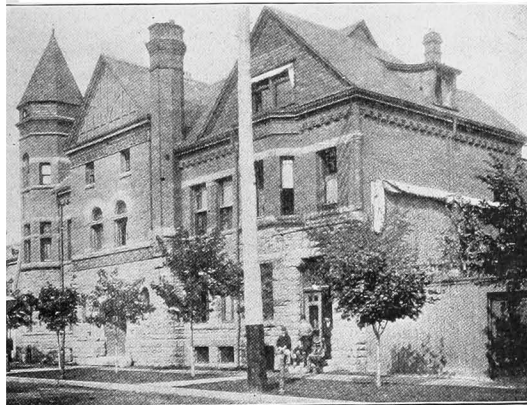
Toronto has many claims to this title, its beautiful summer climate being one of the most important. The equable temperature maintained during the summer months is due, to a great extent, to its position on the

shores of a large body of fresh water, such as Lake Ontario, the cool breezes from this beautiful sheet of water tempering the semi-tropical



*Toronto Club.*

sions for the wealthy, and pretty homes for those of more moderate means ; the beautiful parks and gardens in and around the city, already mentioned ; comfortable hotels and boarding houses, handsome stores, boating, bathing, yachting, and athletic sports and games of every description ; handsome club houses and fine churches, and not least the cheapness of living.



*Victoria Club.*

#### STREET RAILWAY SYSTEM.

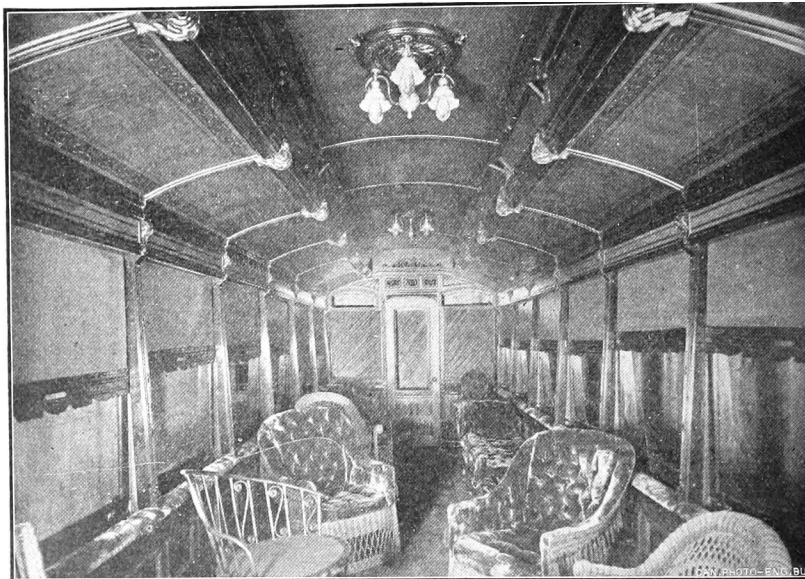
The street car system in Toronto is one of the finest on the North-American Continent, from a standpoint of speed, utility and comfort.

heat of the mid-summer season. In fact the average temperature of Toronto in summer is about 15 degrees hotter than that of Georgia, Florida and South Carolina in winter, and just about as much cooler than those places are during their summer season.

As a place of residence for the summer, Toronto has many attractions ; clean, well paved streets, fine man-

The large, easy riding and elegantly finished cars, together with the heavy steel girder rail, make travelling in and about the City a pleasure.

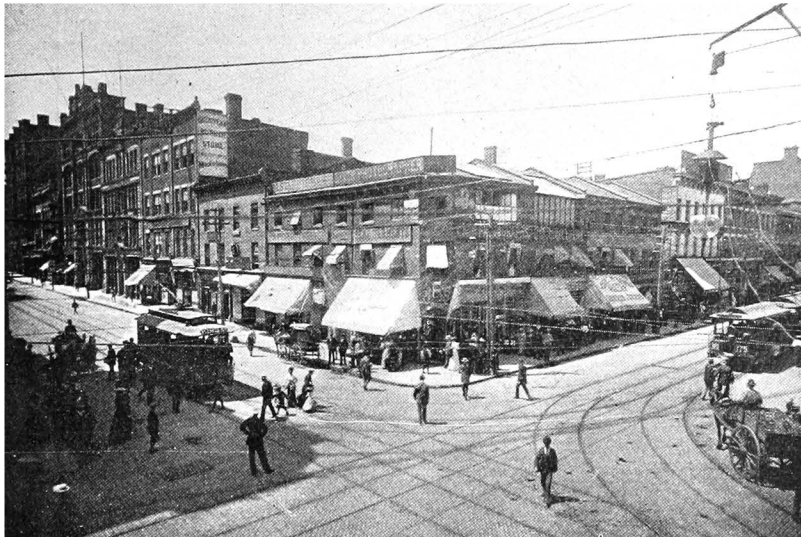
Since the introduction of electricity four years ago, an evening trip over any of the main lines of the railway has steadily grown to be a popular source of amusement and pleasure. One of the most popular routes is the Belt Line, which makes a circuit of about six miles, passing through some of the finest business and residential streets in the City. Many notable public buildings may be seen along this line, among them being St. James' Cathedral, Town Hall, Bank of Commerce, Horticultural



*Interior of Private Car, Toronto Railway Co.*

Pavilion and Gardens, McMaster's Hall, Moulton College, Knox College, besides hundreds of magnificent residences, surrounded by large lawns and trees, of which the owners may well feel proud. The King Street line connects High Park in the extreme west with Victoria Park in the extreme east, the round trip being a little over seventeen miles. This line parallels the waterfront its entire length and passes through the business centre of Toronto. A trip on this line is gradually growing in popularity with the citizens who desire a pleasant outing. The Scarborough route has lately been added to the King Street line, extending the service from the Woodbine, near the eastern terminus, to the famous and beautiful Scarborough Heights, and direct to the entrance gate of Victoria

Park, Toronto's popular east end resort. Kew Beach, another favorite spot for summer visitors, is rendered easily accessible by this line, and many of Toronto's fashionable summer residences are located at this beautiful lakeside resort. The Dundas Street cars make a direct connection with the cars in Toronto Junction, quite a large manufacturing town to the north-west, while the Parliament and Broadview cars give a good service to the north-east. Carlton and College cars make a cross-town route and run directly into High Park. This line is very popular with picnic parties as it makes a direct route to the Park from



*Junction of Railway Tracks, Cor. King and Yonge Streets.*

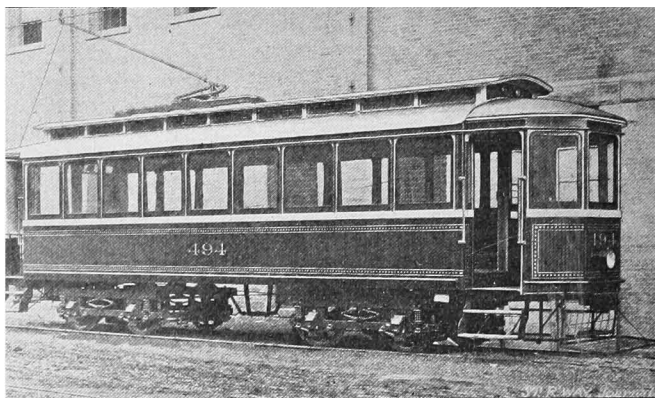
the residential sections of the city. College and Yonge cars connect at Lansdowne Avenue with Dundas Street cars for Toronto Junction. The rates of fare, with free transfers to or from any part of the city, are :—

Cash	- - - - -	5 cents.
Night (from 12 to 4 p.m.)	- - - - -	10 "
Tickets, 6 for	- - - - -	25 "
" 25 for	- - - - -	1.00
Labor Tickets, Limited, 8 for	- - - - -	25 "
Children's Tickets, Limited, 10 for	- - - - -	25 "

During the year 1895 over 23 millions of people were carried with a car mileage of about 8½ million miles. There are at present about 86 miles

of track, and over 200 motor cars, which have trail cars whenever the traffic requires.

A very popular innovation in street car traveling is the "Moonlight Excursions" lately introduced by this company and now thoroughly



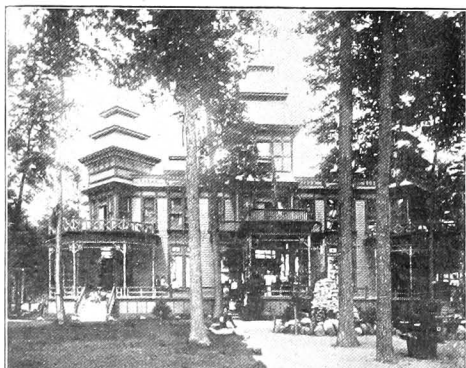
*Double Truck Car, Toronto Railway Co.*

established as one of the cheapest and most convenient and most delightful methods of entertaining large parties. A train of cars, with motor attached, brilliantly lighted with incandescent lights, is chartered for the evening, and on summer nights many of these are to be seen, a blaze of

light, swiftly threading the principal thoroughfares with their gay occupants.

Private cars are also engaged for theatre parties, balls, or other similar functions.

Connection is made at the west end of the King and Queen St. line with the Mimico and Lake Shore Electric Railway, which follows the shore westward for a distance of



*Long Branch Hotel.*

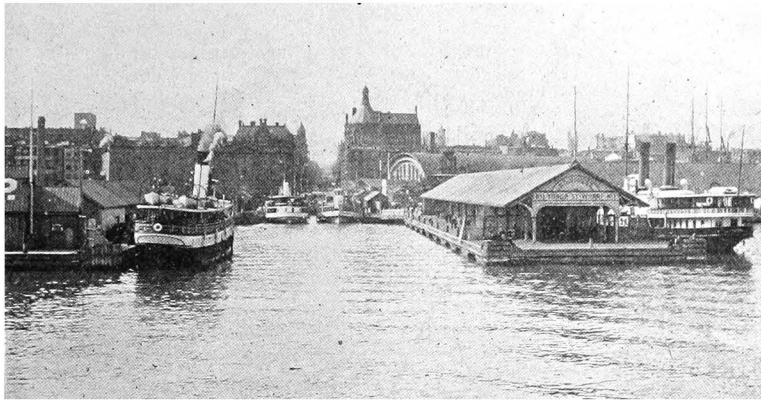
six miles. From the double-decker cars on this line an excellent view of the harbor, island and city may be had, and upon bright clear days the banks of the historic Niagara River can be distinctly seen across the

lake. As soon as the passenger crosses the River Humber westward, leaving the city behind, he glides along the scenic route, over hills and creeks, through orchards and market gardens, while Lake Ontario is spread out before him to the left like a boundless ocean. A trip over the Mimico and Lake Shore Electric Railway should not be missed by any.

The numerous excursion trips made by the large fleet of steamers from the city docks to adjacent resorts, parks and far distant cities, add to the convenience and attraction of Toronto as a tourist centre.

### **A COMERCIAL, INDUSTRIAL AND FINANCIAL CENTRE.**

A stroll through that section of the city between King street and the



*Yonge Street Wharf from the Bay.*

Esplanade, where the massive stone structures of our large wholesale merchants are situated, will give some idea of Toronto's importance as a commercial and distributing centre ; in this locality also many of the leading banks have their headquarters. On King and Yonge streets, the principal retail thoroughfares, are to be seen the imposing buildings of some of the largest banking and loan companies in the city. At the corner of King and Front streets is the Board of Trade Building, a splendid edifice and a fitting monument to Toronto's commercial enterprise.

### **AN EDUCATIONAL CENTRE.**

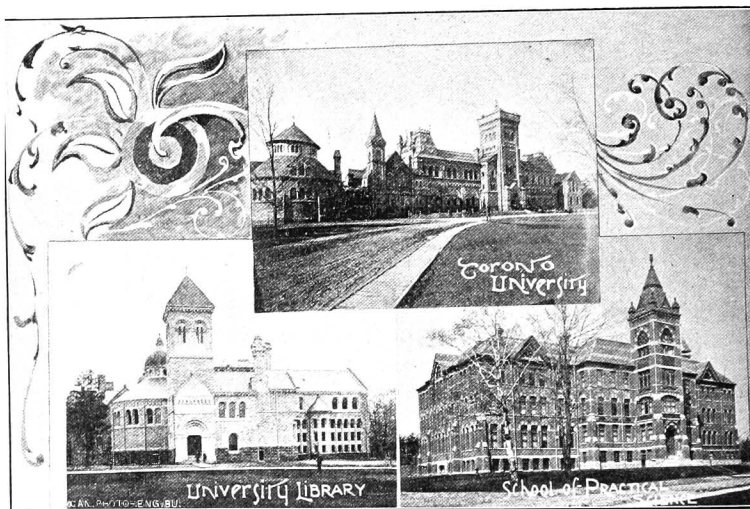
Few cities are so well equipped for the purposes of education in all branches, and in the highest degree, as this city. Space will not permit of the enumeration of the many important seats of learning, but the men

and women who have distinguished themselves in the worlds of art, letters, law, science, etc., bear testimony to the thoroughness and excellence of the instruction received at their Alma Maters.

### HOSPITALS AND CHARITABLE INSTITUTIONS.

Toronto has numerous hospitals, dispensaries, asylums and charitable institutions.

The buildings of the Toronto General Hospital are situated on Gerard Street East, between Sackville and Sumach Streets, and are surrounded by four acres of ornamental and well-kept grounds.



*Toronto University and Main Branches.*

The Victoria Hospital for sick children, situated on the south side of College Street, has few, if any, superiors.

The Lakeside Home for little children is the summer home for the inmates of the sick children's hospital. It is situated on the south-westerly point of Toronto Island.

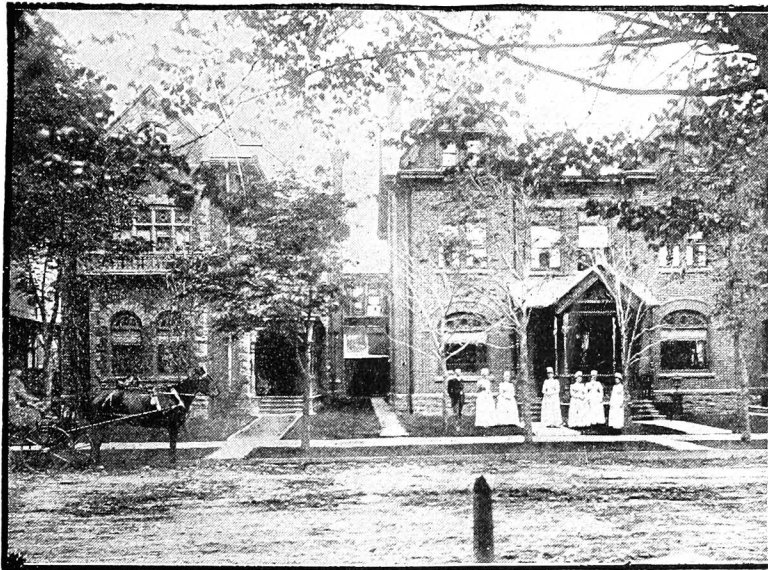
Among the other hospitals are Grace Homoeopathic Hospital, St. John's Hospital for Women, Hillcrest Convalescent Home, Isolation Hospital, St. Michael's Hospital, and Toronto Home for Incurables.

There are several private sanatoriums in the city which prove very attractive, not only to Canadians, but also to their cousins across the border, and testify to the suitability of this city as a health resort.

Among these we would mention Rotherham House, on Isabella St., a private hospital or sanatorium, for the diseases of the nervous system,



(both sexes), surgical and other diseases of women, Rheumatism, Incipient Phthisis, etc., etc., one of the most complete institutions of the kind in America. A special feature is the fact that the Hospital comprises three houses, two being semi-detached with a brick dividing wall, and the third detached and connected by bridges, thus securing to patients more perfect quiet when desired, or complete isolation if necessary, the whole contributing to a more perfect homelike life, and avoiding the daily or nightly disturbances absolutely unavoidable where a single large building is concerned. The flat roof over the semi-detached building has been converted into a hurricane or promenade deck, shaded from the sun by a roof, and



*Rotherham House.*

as the Hospital is situated on a height of land, a cool breeze from the lake can always be enjoyed.

We feel specially warranted in recommending Rotherham House to invalids, from the fact that it is under the constant personal supervision of Dr. Holford Walker, a specialist in diseases of the nervous system, surgical and other diseases of women. The doctor having been in Philadelphia in order to study Dr. Weir Mitchell's methods of rest treatment, and having been assistant for some months to Mr. Lawson Tait, a surgeon of world wide repute, besides attending Apostolle's clinic in Paris in order to further study his methods of applying electricity for the cure of

various diseases of women, has thus qualified himself for the special work of treating diseases of women, either by surgical or electrical means, as the requirements of the individual case indicated, or as the physician of the patient might desire.

Rotherham House was established in 1887, being the first in Ontario, and its growth and advance have been steady and marked. The system known as the Weir-Mitchell treatment for diseases of the nervous system has been in vogue from the beginning, and the many marked results



*Vernoy Electro-Medical Sanatorium.*

obtained thereby have contributed not a little to the success of the Institution.

The staff is composed of young ladies of education and refinement, thoroughly trained in the theory and practical application of massage, and the application of electricity in its various forms. There is also a thoroughly trained masseur for the administration of massage to men. Altogether Rotherham House is a credit not only to Toronto, but to the Province at large.

Another sanatorium worthy of mention is the Vernoy Electro-Medical Sanatorium.

This sanatorium is central and convenient to the business part of the

city and depot, and is located on one of its finest streets. It has for years been noted for the successful treatment of chronic and obscure cases and nervous diseases.

Dr. Gray, the medical superintendent, makes a specialty of nervous diseases and diseases of women, and is thorough, careful and successful.

Prof. Vernoy, Electro Therapeutist, commenced the practice of electro therapeutics in 1869, and in Toronto, 1876. He is patentee of the Vernoy Improved Medical Battery, constructed on lines in harmony with the system of Electro-Therapeutics which he uses, based on the unchanging laws of nature. In connection with the battery he has for years published a paper called the *Electric Age*, in which may be found a long list of references given by those in high standing in the city and out of it, showing the excellent results arrived at by means of this method of treatment.

Those visiting the city, in search of means to restore health, would do well to call at the Sanatorium, 231 Jarvis Street, and be assured of the good work being done there.

#### QUEEN'S ROYAL, NIAGARA-ON-THE-LAKE.

It would be difficult to determine what constitutes the chief charm of this popular resort, its attractions are so many and varied; absolute rest amid beautiful scenery, in a perfect atmosphere, are combined in pleasing contrast with the brilliant gaiety which has made the Queen's Royal the most fashionable watering place in Canada.

Let us enumerate some of the principal features of this resort. The centre of attraction is, of course, the hotel itself and its beautiful, well kept grounds. The Queen's Royal is a spacious building, electric lighted and containing lofty and handsomely furnished bedrooms, parlors, smoking rooms, dining room and ball room; it is situated on the bank of the Niagara River, near the mouth; wide verandahs surround the building from which the picturesque scenery may be enjoyed, in front the broad sweep of Lake Ontario and on either side the Queen's Royal Park, with its cool green lawns and welcome shade trees.

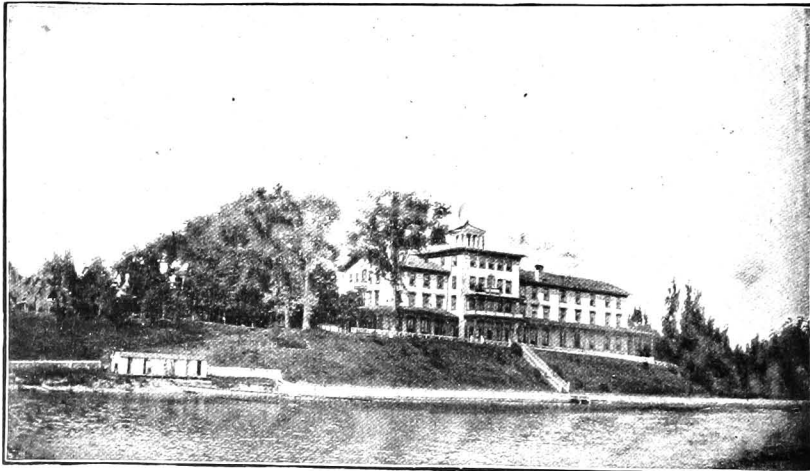
Among the many amusements which contribute to the popularity of this house are the Saturday evening "hops," which are patronized by the "upper ten" from Toronto, Hamilton, St. Catharines, Buffalo and Rochester.

The fashionable recreations of golf and cycling may be pursued at Niagara under the pleasantest conditions. The links adjoining the Hotel are among the most picturesque in America, while the roads cannot be surpassed either for smoothness and excellence, or for the beauty of scenery through which they pass.

Another strong attraction is the lawn tennis on the perfect courts in

the park—the interest in this sport is heightened by the two tournaments held there, the Canadian Championship Tournament during the week of July 13th, and the International Championships on the last week in August. These are the gayest periods of the season, tournament balls and entertainments being held every evening of the week. Bowling on the green also draws many enthusiastic votaries of this old time game, and shares the honors with the more modern game of tennis; the Ontario Bowling Association holds its annual tournament on these lawns, a week earlier than the tennis tournament, and many hundreds gather to witness the closely contested matches.

Besides the many attractions surrounding the Queen's Royal, its proximity to the numerous places of interest in the vicinity makes it a



*Queen's Royal, Niagara-on-the-Lake.*

very convenient sojourning place for sightseers; a most enjoyable trip is that by the Niagara Navigation Co.'s splendid boats up the river to Queenston, then by the Niagara Falls Park and River Electric Railway, skirting the river's bank and through historic battle grounds to the wonderful Niagara Falls, while many beautiful walks and drives can be taken in the neighborhood of the hotel. The very best of boating and bathing can be enjoyed. Added to the conveniences of the interior arrangements of the hotel are the telegraph and telephone offices in the building.

The proprietors of the Queen's Royal are Messrs. McGaw and Winnett of the Queen's Hotel, Toronto, and no further recommendation is necessary as to the standing and first-class nature of this resort.

This season they have added to the accommodation of the hotel by the erection of charming cottages on the lake front, and prior to extensive enlargements, have introduced an entirely new sanitary system in the main house.

### HOTELS, BOARDING HOUSES AND RESTAURANTS.

Toronto possesses several good hotels of which the chief feature is "solid comfort," they are easy of access by street car and moderate in charges, rates ranging from \$1.00 to \$5.00, while the appointments in the leading houses, such as the Queen's, Rossin, Walker, Arlington, Palmer, Elliott, etc., are first-class.

Many tourists, however, prefer the quiet and seclusion of a private boarding



*Private Boarding House (Mrs. Duckworth's.)*

house, and in this respect Toronto is specially favored. There are numerous moderate priced houses at rates of from \$3.00 to \$5.00 per week, and several first-class houses, of which the accompanying illustration is a good example. This house is situated at No. 50 St. George Street, one of the most fashionable residential thoroughfares of Toronto. There is accommodation during the summer season for thirty guests; the house is handsomely furnished, has private parlors for families, and faces the entrance to Queen's Park, giving immediate access to Parliament Buildings, University of Toronto, and many other places of interest; it is near the lines of the College St. and Belt Line cars. This handsome residence, surrounded by pretty shade trees, may be taken as a good sample of Toronto's first-class boarding houses, the rates are reasonable, \$1.00 to \$1.50 per day, and the proprietress, Mrs. Duckworth, enjoys the patronage of some of Toronto's best families and summer visitors.

The restaurants of this city, while not on the scale of Delmonico's, will be found very comfortable and first-class in every respect, and visitors with a *penchant* for "lunching," will seek Harry Webb's, McConkey's, or Nasmith's, and will be well satisfied.

### LIST OF LEADING TORONTO HOTELS.

Hotel and Name of Proprietor or Manager.	Rooms.	Rates.		
		Per Day.	Per Week.	
Queen's .....	McGaw & Winnett	400	\$3.00 to \$5.00	
Rossin House .....	Nelson Bros.	400	2.50 to 4.00	Special.
Arlington .....	W. G. Hayill	200	2.00 to 3.00	"
Walker House .....	David Walker	200	2.00 to 2.50	
Palmer House (American Plan)	J. C. Palmer	200	2.00	\$8.00 to 10.50
Kennington House (European Plan)	J. C. Palmer	150	0.50 to 1.00	
Elliott House .....	J. W. Hirst	200	2.00	Special.
Lakeview .....	J. H. Ayre	100	1.50 to 2.00	5.00 to 10.00
Albion .....	John Holderness	175	1.00 to 1.50	5.00 to 7.00
Commercial .....	Meagher & Peacock	...	1.00	Classified.
Richardson House .....	S. Richardson	100	1.50	
Rosedale .....	John Elliott	50	1.00 to 1.50	Special.
Hotel Hanlan, Hanlan's Point, Toronto				
Island .....	M. A. Thomas	100	2.00 to 3.00	10.00 to 18.00
Mead's Hotel, Island Park, Toronto				
Island .....	Mrs. Mead	100	1.50 to 2.50	7.00 to 12.00

### PLACES OF INTEREST IN TORONTO.

Board of Trade Building, Yonge and Front Streets.  
 Lieut.-Governor's Residence, King and Simcoe Sts.  
 Toronto Club, Wellington and York Sts.  
 Athletic Club, College Street.  
 Athenaeum Club, 167-169 Church Street.  
 Canadian Institute, Museum and Library, Richmond Street West.  
 Victoria Hospital, for Sick Children, south side of College Street.  
 General Hospital, Gerrard Street East.  
 Public Library, Church and Adelaide Sts.  
 Armouries, University Street.  
 Massey Music Hall, Shuter and Victoria Sts.  
 Horticultural Gardens, Gerrard and Sherbourne Sts.  
 Normal School, Museum, Etc., Gould Street.  
 Exhibition Grounds and Crystal Palace, Annual Exhibition held early in Sept.  
 Necropolis, Winchester and Sunach Sts.  
 Reservoir Park, North Toronto.  
 Mount Pleasant Cemetery, Deer Park.  
 St. James' Cemetery, Parliament and Wellesley Sts.  
 Post Office, Adelaide Street East.  
 Knox College, Spadina Avenue.  
 Baptist College, Bloor Street West.  
 Trinity College, Queen Street West.  
 Upper Canada College, head of Avenue Road.  
 Ontario Society of Artists, King Street West.  
 In Queen's Park, head of College Avenue.—Parliament Buildings, University Buildings, Meteorological Observatory, School of Practical Science, Victoria College, Wycliff College, Volunteer's Monument, George Brown's Monument, Sir. John A. Macdonald's Monument, etc.

### **THE MIDLAND LAKES OF ONTARIO.**

AMONG the many notable resorts, in the vicinity of Toronto, there are few that can compare with the Victoria, Peterboro', and Haliburton Lakes. These lakes with their accompanying fishing and hunting resorts are on the Midland Division of the Grand Trunk Railway : they comprise the chain of lakes lying within a radius of 50 miles, between Toronto and the Bay of Quinte, and extending 100 miles north of Lake Ontario ; the Victoria and Peterborough section of these waters form, with the River Trent, part of the Trent Canal system between the Bay of Quinte and Matchedash Bay on the Georgian Bay, the Haliburton Lakes emptying their waters northward into the Ottawa River, westward into Muskoka Lakes and southward into the Victoria and Peterboro' Lakes above mentioned.

The first place of importance, reached from Toronto, is Lindsay (70 miles north-east), a pretty and prosperous town of 7,000 inhabitants, situated on the Scugog River, which connects Scugog and Sturgeon Lakes, and the headquarters of Capt. Craudell's excursion line on these waters. Fourteen miles due north is Fenelon Falls : population, 1,500: a fine lock here forms the connecting link between Sturgeon and Cameron Lakes, and a charming trip is westward across this latter sheet of water, down Burnt River, past Rosedale and through Balsam Lake to Cobocok, a pretty village on the Gull River. Cobocok is also reached direct by rail from Toronto, an 88-mile journey, and is the terminus of this branch of the G.T.R. : it boasts a population of 500.

Fifty miles north of Fenelon Falls, Haliburton, at the head of Lake Kushagawigamog—a 14-mile stretch of water—is reached : this is the terminus of the Lindsay and Haliburton branch of the G.T.R., and the headquarters for the Haliburton Lakes. Excellent fishing and hunting is to be had in the wilds of this region, salmon trout, black bass, white-fish and ling, and bear, deer, duck, geese and partridge are plentiful.

One of the chief points of interest in the Midland District, on account of its industries, its geographical situation, and as a railway centre for the Midland Lakes and the district comprised between Belleville and Midland (the two termini of the Midland Division of the G.T.R.) is the pretty city of

#### **PETERBOROUGH.**

This thriving city, on the Otonabee River, with a population of nearly 13,000 (including the annexed village of Ashburnham), is the manufacturing, commercial, and shipping centre of the famous Midland Lake district of Ontario, and the headquarters of the renowned Peterboro' canoes and camping outfits.

Peterborough is 90 miles from Toronto, and is reached by the G.T.R.

Midland Division, also by the C.P.R., from the last named city; also from Port Hope, 30 miles to the south, and from Belleville, 36 miles to the east, by the G.T.R. This city is the headquarters for Calcutt's Steamboat Line to Rice Lake, and for the famous

### CHEMONG PARK.

This charming resort is situated on the shores of Chemong Lake, a beautiful sheet of water ten miles long by one in width, and about 560 feet above Lake Ontario.

*Chemong Park Hotel* is in the centre of a grove of young pines 100 acres in extent, and on a height of land 670 feet above Lake Ontario;



*Chemong Park Hotel.*

no healthier spot could be found in Canada; the house is quite new, substantially built of red brick, with all modern conveniences; the hall and office are spacious, the rooms lofty and well furnished, and the table is well supplied.

The boating, bathing, fishing and hunting are excellent, bass and maskinonge abounding, and during the fall and winter gunning for rabbits, partridge and ducks is the favorite pastime. Fishing tackle, boats, etc., are kept for the use of guests. A daily steamer connects with adjacent lakes, and a private steamer is kept for guests and excursion parties. There is a daily mail, and telephone communication with Peterboro' and surrounding points.

Chemong is reached by bus, which runs twice daily from the Grand



Central Hotel, Peterborough, a distance of 6 miles; baggage should be checked to Peterboro' station. Mr. L. G. Fobert, the proprietor of this charming resort, gives every attention to the accommodation and transferring of guests and baggage; there is accommodation for 70 guests. The post office address is Bridgenorth, Ont.

Without doubt the most charming tourist centre in this beautiful land of lakes and islands is the pretty village of

### LAKEFIELD.

To the weary business man, the tired clerk, and worn-out shop girl, the thought will often occur—where shall I spend my summer holidays?



*Stony Lake, from Eagle Mount.*

and then they too often fail to appreciate the opportunities offered by our own country, but "to be in the fashion," rush off to the well known watering places, leaving the natural advantages of our Canadian Lakes and scenery, with their warmth of color and health giving breezes, for the crowded hotel or close lodging house.

Of the many eligible places in Ontario to spend a month, free from the cares of business, none can be surpassed by the village of Lakefield and the islands of Stony Lake, in the County of Peterboro', easy of access, with all the comforts of home and city life, together with fresh air and picturesque scenery, combining to make it one of the most inviting spots in Canada.

Lakefield, a village of over 1,200 inhabitants, is situated 9 miles

north of Peterboro', the County town, and is the terminus of one of the Midland divisions of the Grand Trunk, at the foot of present navigation on the back chain of lakes; healthy, well lighted by electricity, good sidewalks, comfortable hotels and private boarding houses, with telegraph and telephone service, 3 daily trains in summer, and with beautiful drives in every direction. There are three large boat building establishments from which any craft, from a steam yacht to the frail single canoe, can be hired, while from the well stocked stores supplies of every kind can be purchased. Church-goers will find churches of all denominations,



*Camping Party, Stony Lake.*

members of secret societies will find the "latch string" out in the Masonic, Forester and other halls, while the efficient school and low rate of taxation offer inducements to those with families to make it their permanent home. Furnished houses can be rented during the summer months, and good board obtained in private families by those who do not care to stay at the hotels.

To the manufacturer desiring a location to start business, Lakefield, with its shipping facilities, constant and inexhaustible water power, offers many inducements and advantages, especially to woodenware industries of any character, as, in the woods to the north of the village are millions of feet of the choicest hardwood, pulp wood, cheese box material,

etc., all of which can, at a low cost, be floated or towed down to the factories. Situated on the route of the Trent Valley Canal, with part of the work completed and three important sections now under way, it will not be long before the western trade will find an outlet from the Georgian Bay to the Bay of Quinte, through the canal to the ocean. The village is prepared to offer every inducement in its power to encourage industries to locate in Lakefield. There is a good opening for a tannery or woollen mill.

#### STONY LAKE.

Let us now visit Stony Lake; taking passage on one of the commodious steamers that leave daily on the arrival of the morning train from Peterboro', we are soon threading our way up the winding channel of Lake



*View on Stony Lake.*

Katchawanooka (lake of many rapids) past handsome residences, well tilled farms and through stretches of drowned land, covered with wild rice, and a blaze of white and gold while the water lilies are in bloom. Young's Point, a thriving hamlet 5 miles from Lakefield, is soon reached, and as the lock is passed we enter Clear Lake, a beautiful sheet of water some 4 miles long by over 1 mile wide, its clear surface unbroken by a single island until we reach the entrance to Stony Lake, when all is changed: in a space, ten miles long, by two wide, over 800 islands are dotted of all sizes, from mere rocks to verdure clad stretches of land of 100 acres in extent: nearly all are wooded with pine, hemlock, birch and poplar, making a scene of beauty which rivals the far famed "Thousand Islands." Over 100 summer cottages have been erected on the principal islands which, during the summer months, are thronged with young and old enjoying "Gipsy life;" here and there on the tall flag poles alongside the "Red

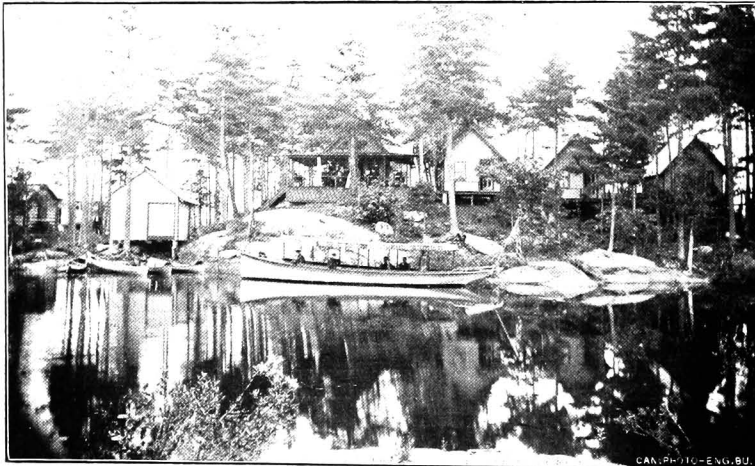
Cross of old England" may be seen the "Stars and Stripes," showing that our "American Cousins" from New York, Boston, Rochester,



*Rochester Fishing Party, Large Catch of Bass, Young's Pt.*

the weary tourist can rest and recuperate, he can swing in his hammock under the shade of the trees, or in his canoe explore the many nooks and channels among the islands; he can tempt the maskinonge, trout or bass with his troll or rod, and later in the season he can take his gun and seek the deer,

Pittsburg and other cities, have already discovered the beauties of Stony Lake, and enjoy Canadian life as if "to the manner born." Here the weary tourist can rest and recuperate, he can swing in his hammock under the shade of the



*American's Camp, Stony Lake.*

duck or grouse which are to be found in the woods or ponds, (fifteen deer were killed by one party in Stony Lake during the season of '95). In the vicinity of Stony Lake are Jacks, Long, Mountain, Cedar,

White and Koshakabogamog Lakes, all teeming with fish, and worthy of a visit for the scenery alone. There are two hotels, and another large summer hotel will be erected this season. Furnished cottages can be rented during the summer months, and good board can be obtained with private families, prices for both varying according to the accommodation required. There is a post office with daily mail, and well furnished stores where everything needed in camp life can be obtained at moderate prices, while supplies such as butter, milk, ice, eggs and vegetables are furnished to the cottages and camp by the neighboring farmers. Sunday is well observed, the day being usually spent visiting friends and neighbors, while service is held on two or three of the islands morning and evening.



*"Pinchurst" Cottage, Stony Lake (J. F. Lilliecap).*

The steamers make the circle of Stony Lake every day, returning to Lakefield about 6 p.m. to connect with the evening train to Peterboro'. During the season of '96 a second line of boats will leave Lakefield on the arrival of the afternoon train, and leave Stony Lake every morning to connect with the morning train at Lakefield.

Any further information can be obtained by addressing Dr. Bell, Village Clerk, Lakefield, Ont.

A good example of the cottages available for renting, already referred to in this sketch, are those owned by Messrs. Graham & Son, and a short description of these pretty residences and their location and surrounding attractions will serve to give an idea of this popular method of summering in these waters. One of these, Viamede, is illustrated on next page.

Viamede Cottage is beautifully situated in a park of 11 acres, on the shore of Stony Lake, at the base of Mount Julian. A flowing spring is near at hand, said to contain mineral properties, and there is a nice sandy beach for bathing, also good fishing for both bass and maskinonge.

The table is well supplied with seasonable food. Accommodation is made for 25 guests.

Sunday Services:— Union Y.M.C.A. services are held on an island, about a mile distant, twice every Sunday; Church of England services are held within easy walking distance every Sunday.



*Viamede Cottage, Stony Lake (W. M. Graham).*

Terms very moderate. The steamers land here daily (Sundays excepted). For rates, rooms, etc., apply to W. M. Graham, Lakefield, Ont.

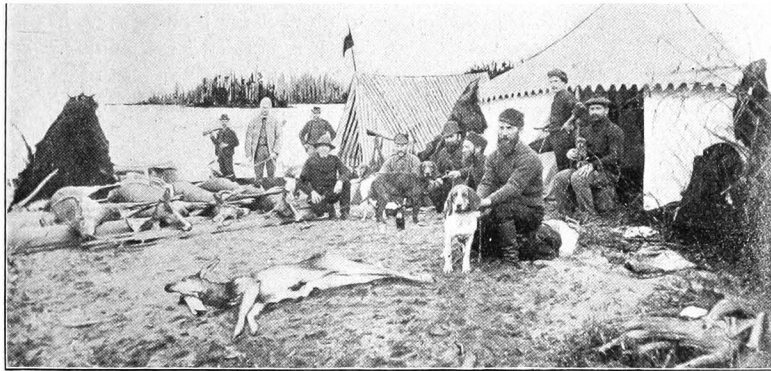
Another pretty resort is Grassy Island, pleasantly situated among a group of islands above the narrows of Stony Lake; it has two comfortably furnished cottages to be rented; the steamers pass here every day. Application for information and terms should be made to Robert Graham, Lakefield, Ont.

Campers' Supplies.— Messrs. R. Graham & Son are also fully alive to the requirements of campers in the way of supplies, etc., they have a general store at Lakefield, and carry a full line of campers' supplies in dry goods, millinery, boots and shoes, crockery, groceries, canned goods,

etc. All orders for them, entrusted to the captains of the steamers, accompanied with the cash, will be promptly filled, or will be sent C. O. D.

Excursions.—The trips taken by the boats of the local steamboat lines are truly delightful. Among the many places of special interest passed through, and touched at, we might mention Mount Julian, with a hotel, store and post office; Burleigh Falls, with its fine lock and hotel; numerous charming lakes such as Lovesick, Deer, Chemong, Buckhorn, Pigeon, Sturgeon, etc.; on the Sturgeon Lake are two popular resorts, Bobcaygeon and Sturgeon Point, with fine hotels, and excellent fishing, boating and bathing.

Besides the places already noticed and described, Hastings, with a population of 1,000, and Campbellford, population 2,500, on the Trent River, near Rice Lake, are well known as fishing resorts of more than average excellence and are very popular with American anglers. They



*Deer Hunting Camp, Katchewan Lake.*

are about 115 and 120 miles respectively from Toronto, and about half-way between Bellville and Peterboro', on the Midland Division. There are good hotels at both these places. Port Perry, with a population of over 2,000, at the head of Lake Scugog and about 50 miles from Toronto; and Jackson's Point, a charming resort on the south shore of Lake Simcoe, 55 miles north from Toronto, are well worthy of a visit.

No better district can be found for camping and canoe parties, numerous locks and easy portages facilitating this pleasurable method of travelling. Guides can be obtained at the principal towns and villages.

The points of connection from the United States are at Prescott, Brockville and Kingston from Eastern New York State; at Port Hope from Rochester and Central New York; or, via Buffalo, Niagara Falls and Toronto from Western and South Western States.

### **GEORGIAN BAY ROUTE.**

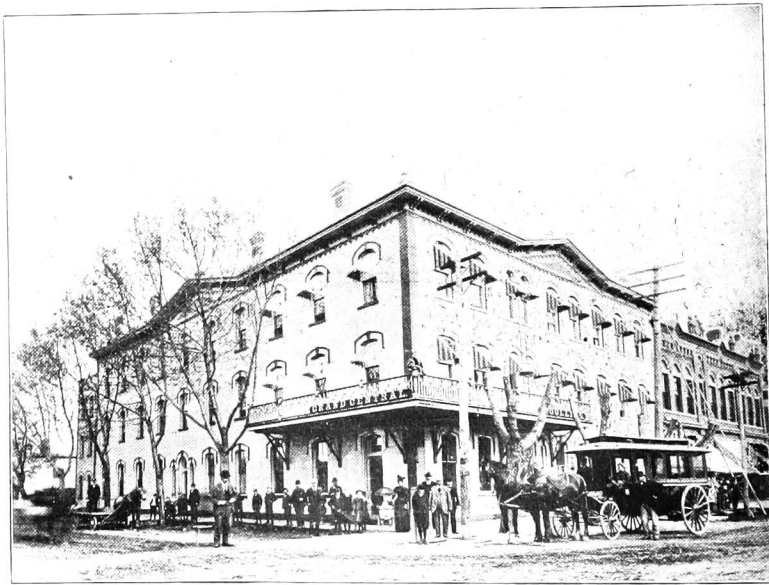
THE Georgian Bay, or north shore and Manitoulin channel route—better known to tourists as the Soo-Mackinac trip—is one of the most deservedly popular of the many excursion routes of Canada. In dispensing her gifts, nature has dealt generously with this beautiful northern region and lavishly showered her emerald isles upon the amethyst waters of this vast lake district. Muskoka has its 800 lakes, the St. Lawrence boasts its 1,000 islands, here we have a kaleidoscopic panorama of 30,000 islands of every conceivable size and formation.

Briefly let us outline this most enjoyable trip. Leaving Toronto or Hamilton by the N. & N. W. Division of the G.T.R. we arrive at

#### **COLLINGWOOD**

A charming town with a population of about 5,000 situated on the southern extremity of Georgian Bay.

This pretty town, which is well worth a visit for its own sake, has a fine harbor, good stores, banks, and churches, besides large manufacturing interests. There are several good hotels, at one of the best of which—the Grand Central—we secured exceedingly comfortable quarters.

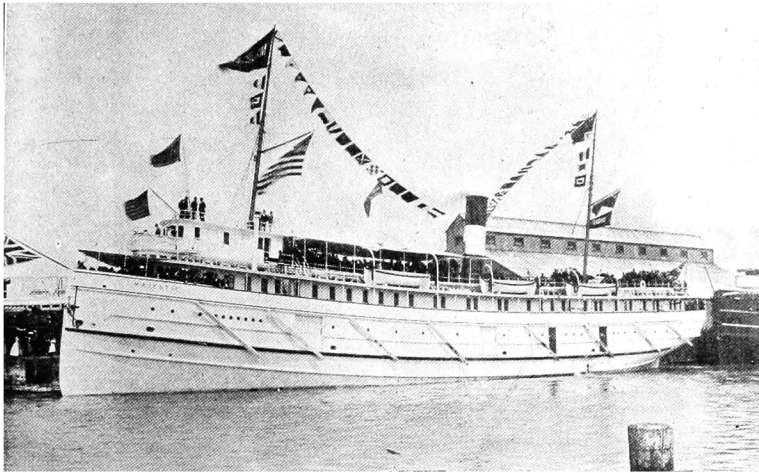


*Grand Central Hotel, Collingwood.*



There are many attractions to be enjoyed here, notably, the wonderful caves of the Blue Mountains, Georgian Bay Park, on the lake shore, and pretty walks and drives through the surrounding country.

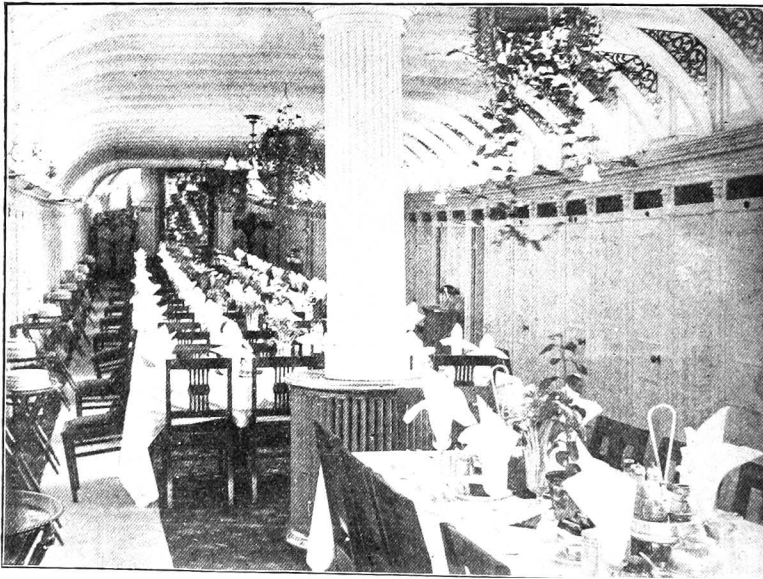
After enjoying the hospitalities of this exceedingly hospitable town and people, we embarked on board the *Majestic*, a fine new steamer, and the flagship of the G. N. T. Co.'s White Line, the pioneer of the two splendid lines of steamships which ply on this route. Steam is up and our good boat, like a huge white seabird, ploughing the waters of the harbor and passing Nottawasaga lighthouse, soon leaves Collingwood behind. Meaford is the first port touched at, and rounding Cape Rich the busy town of Owen Sound is reached, with its natural battlements of limestone cliffs.



*S.S. "Majestic."—G. N. T. Co. (White Line).*

This is a terminus of the G. T. R. and C. P. R., and the headquarters for the Canadian Pacific lake steamships. Then past Cape Croker, the dark shores of the Indian Peninsula, past Cabot's Head, across the Gap, and soon the shores of the great Manitoulin Island loom in sight with Lonely, Club and Squaw Islands as satellites. We are now nearing the north shore and shortly arrive at the pretty fishing village of Killarney, the first stopping place on this section of the trip. Leaving Killarney with its background of the Laurentian Mountains and passing through the Straits of Killarney, and winding among islands large and small, we now reach Manitowaning, at the head of a bay of the same name, and the first port of call on the great Manitoulin Island; here is located the

Indian village Wikwemikong, which, with its picturesque, dusky inhabitants, is a novel and attractive sight: there are two good hotels here and the finest trout fishing in these northern waters, together with a beautiful natural park. Little Current, with two hotels, is next reached by a charming approach: a cable crosses here giving telephone and telegraph connection between the island and the mainland. Kagawong next, and then Gore Bay, the judicial seat of Manitoulin Island, with a fine harbor and two good hotels. The scenery here is very varied, from picturesque to grand, the surface of the waters pierced by numerous jutting headlands, a vista of islands stretching into the hazy distance.



*Dining Saloon, S.S. "Majestic."*

From here we cross to the mainland, and Spanish River, in all its varied scenic settings next claims our attention; then, passing Little Detroit (where the Huron and Ojibway Indians in the dim past fought for supremacy), where the rocks on either side seem to meet, we arrive at Serpent River, or Cook's Mills, a lumbering and fishing station: then to Algoma Mills, where connection is made with the C.P.R., (Georgian Bay branch). Blind River is next reached and passed, and a stop is made at Thessalon, a growing gold mining centre and a favored place for anglers, the splendid speckled trout fishing in the inland streams and lakes here

being a great attraction. After a twelve mile run further west Bruce Mines is reached with its old copper mines and gold mine, the first in operation in the northern district. Entering now St. Mary River, we cross over to Hilton and Richard's Landing, two ports on St. Joseph's Island, specially noted for its hunting and beautiful scenery. Here are to be seen numerous summer camps, and among the islands we espy the yachts and canoes of the campers and guests at the hotels. The animation of the scene now becomes more marked, islands crowd closer, a long procession of large lake steamers, barges and other craft are passed; then crossing Hay Lake, through Hay Lake channel, past Sugar Island and on to Garden River, through scenery which is the climax of beauty on this



*Killarney from the East.*

trip, the famous Sault Ste. Marie, of which so much has already been written, is reached, and here a long stop is made, enabling passengers to satisfy their curiosity and inspect that gigantic enterprise, the \$4,000,000 Soo Canal, with the ship locks, International Bridge, etc. The Algoma Park Summer Resort, five miles west from the Soo on the Canadian shore, is a great attraction to tourists who desire to stop over and make a longer stay here, while the Algonquin, International, and other good hotels in the town itself provide good accommodation. The fishing in this vicinity is excellent. But our destination is not yet reached, and after our tour of inspection at the Soo we re-embark and steam down the American Channel, between Sugar and Neebish Islands, across Lake Huron and to



*Indian Village near Thessalon.*



*View in Encampment Four, Wilson Channel.*

**MACKINAC.**

Mackinac—a fairyland of surpassing loveliness of scenery, invested with the sombre charm of mystic Indian traditions of dim remoteness, teeming with historical associations of bloody battles between the red-man and the whites, full of interesting relics and evidences of those tempestuous times, old trails, military roads, and the old fort ; with many points of interest, such as the National Park, Arch Rock, Lover's Leap, Fairy Arch, Sugar Loaf, Devil's Kitchen, Skull Cave and many other places, to recount or describe which would occupy many chapters. Such with its perfect climate, walks, drives, fishing, bathing, etc., is the aptly named "Fairy sea-girt isle, or "Gem of the Lakes."



*Mackinac Village from Fort Hill.*

We cannot conclude without paying a tribute to the excellence of the accommodation and appointments of our fine boat, and the invariable courtesy of all her officers, which add so much to the pleasure of the trip.

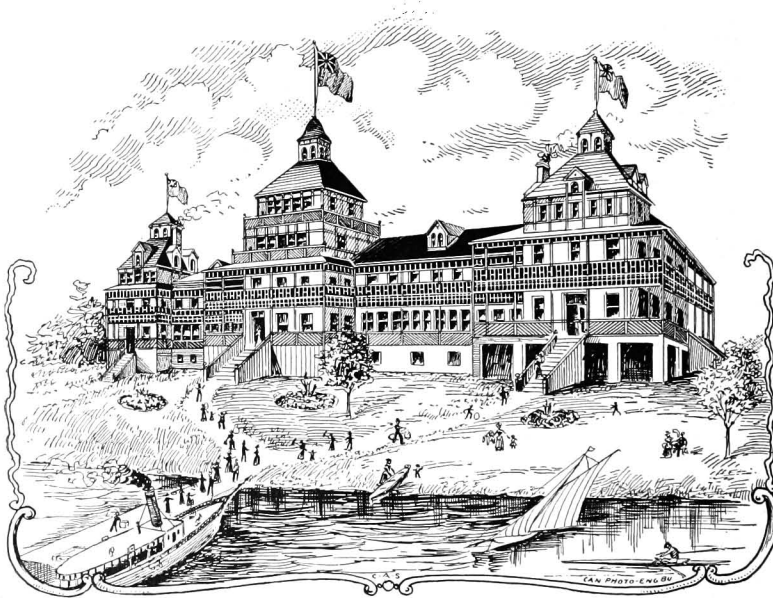
On the return trip a pleasant detour may be made by connecting at Killarney with the Parry Sound boat, returning by way of French River, Byng Inlet, Parry Sound and Midland (terminus of Midland division G.T.R.), and so back to Collingwood.

An important thing to be borne in mind is that baggage should be checked to the steamboat wharf at Collingwood, and not to the station ; also that stopover tickets are issued good to return by any steamer of the line, a great convenience to sightseers, anglers and others.

## THE NORTHERN LAKES OF ONTARIO.

For variety and charm of scenery there is no district in America or in any other country that can outrival the seemingly endless chain of beautiful lakes in the northern part of Ontario, 600 to 800 feet above sea level.

Of the many excellent resorts in this land of lakes and islands, forest and streams, the most easy of access is Penetanguishene.



*Penetanguishene Hotel.*

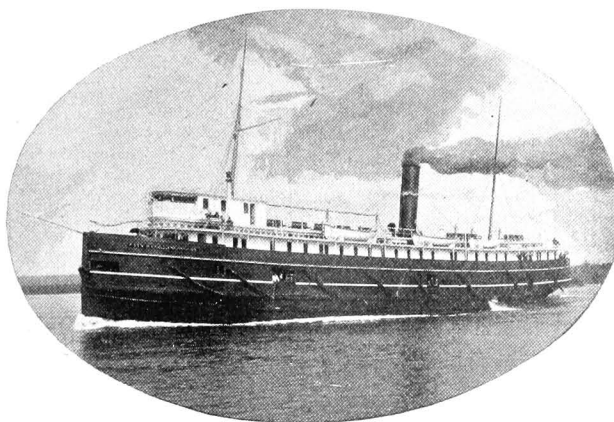
Penetang, as it is familiarly known, is but 100 miles, a 4 hours journey, from Toronto, almost due north, and is located at the head of the harbor of that name. The pretty town sloping down to the harbor is one of the most ancient in Canada and is full of historical associations, but the object of attraction to the modern tourist is the well-known

### PENETANGUISHENE HOTEL.

This resort, one of the finest in the Muskoka District, is reached by the N. and N.W. Div. of the G.T.R. The attractions which yearly draw so many pleasure seekers to this spot are inexhaustible. The harbor is 5 miles long by 1-3 of a mile wide, and is the fountain-head, as it were, of the 30,000 Islands of the Georgian Bay. The innumerable

channels sheltered by densely wooded islands are the haunt of the black bass, maskinonge and pickerel and numerous wild fowl; the dense forest growth of the islands and mainland shelters bears, deer and other animals and the hunting and fishing furnish the best of sport.

Among other features of this resort, boating and bathing are very popular, there are fine boathouses, good boats and steam launches and a good sandy beach on the hotel grounds, a picturesque park of 15 acres. The hotel, which is termed the Ponce-de-Leon of Canada, is a handsome structure facing the harbor, and is conducted in a very liberal manner. The rates at this first-class house are moderate, \$2.00 per day and upwards, or \$10 per week and upwards. Special rates are made for families. Intending tourists will do well to correspond for further information to the proprietors, Messrs. Patterson & Paisley, or to the manager Mr.



*One of the "Black Line" Boats.*

James K. Paisley, who may be communicated with up to June 1st, at the Grand Trunk ticket office, corner King and Yonge Streets, Toronto, Ont.

#### **PARRY SOUND.**

There is no more delightful and romantic trip in Canada than that from Penetang to Parry Sound, traversing a distance of about 60 miles along the east coast of Georgian Bay, through sinuous channels, winding between thousands of picturesquely beautiful islands. Arriving at Penetang by the N. and N.W. Division of the Grand Trunk Railway from Hamilton and Toronto, distant respectively 140 and 100 miles, the tourist embarks on the fine steamer City of Toronto, of the North Shore Navigation Co. (Black Line).

Leaving Penetang the pretty town of Midland is touched at (connection being made at this point with the Midland Division of the G.T.R.) and then with the boat's prow headed northward the enchanting journey through the 10,000 islands of the Parry Sound archipelago is fairly commenced. It is impossible adequately to describe the romantic beauty of this trip, ordinary expressions seem hackneyed when compared with the reality, but it may safely be said that for charm and loveliness of scenery this region surpasses that of the famous 1,000 islands of the St. Lawrence. The entire journey is made through the inside channel, thus ensuring a calm, safe, and enjoyable passage even in rough weather, through the protection afforded by the chain of myriad islands of every conceivable shape and size, dotted along the route; the coast line also vies with the adjacent islands in picturesqueness, jutting points and deep bays indenting the shore, adding variety of charm to the scene.

Muskoka Mills at the mouth of Muskoka River is soon reached and passed, and shortly afterwards, rounding a sharp point the boat arrives at Sans Souci Resort, a pretty spot on the beautiful Moon River; there is a comfortable hotel at this appropriately named place, and excellent, and often exciting, fishing in the neighborhood.

But our destination is yet further north, and leaving this retreat we presently enter the South Channel, passing between the mainland and Parry Island, an island of long and irregular shape on which is the Indian Reservation.

This island is shortly to be the terminus of the new Ottawa, Arnprior, and Parry Sound Railway, and will before long be joined to the mainland at a jutting point of rock, by a swing bridge, over which the trains will pass to the terminal station at Depot Bay on the farther end of the island. Passing through this narrow neck of the channel the steamer enters a pretty bay, across which is to be seen in all its picturesqueness

#### ROSE POINT.

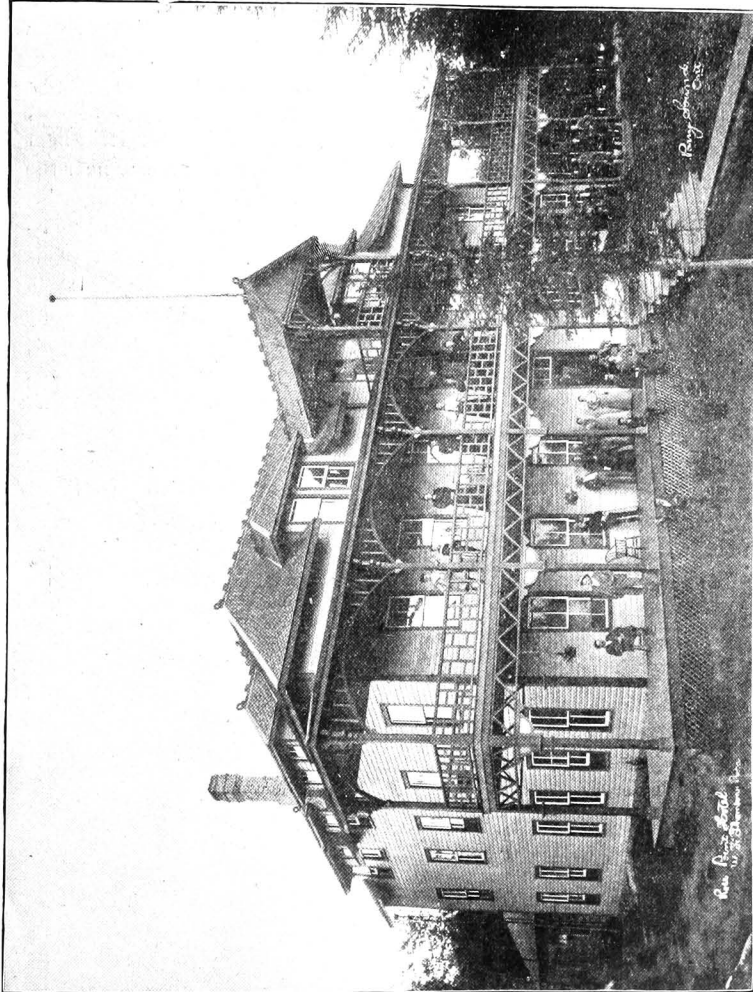
This charming resort is worthy of special mention as it is evidently the objective point of many of our fellow passengers, and we will here digress somewhat, and give some description of the place and its surrounding attractions.

The hotel is of course an important consideration with the tourist, and a welcome and pretty sight it is as we view it from across the bay.

Situated on a gentle slope, in an amphitheatre of rocky, pine-clad bluffs, on a point of the mainland stretching out among numerous islands, and facing the bold outlines of Parry Island; with the beautiful waters of the bay sheltered by surrounding hills and islands rendering boating and bathing safe and pleasant pastimes, this is indeed an ideal resort. The hotel itself is new, and fitted with all



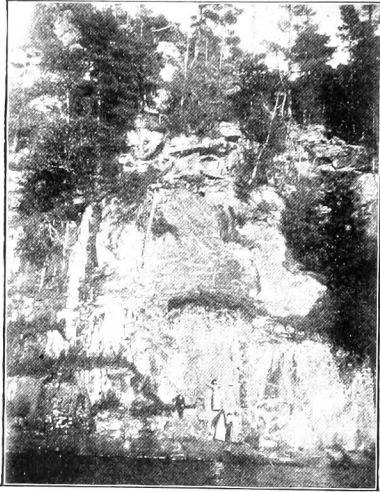
modern conveniences, and contains ladies' and gentlemen's reading rooms, smoking rooms, etc.; the sanitary arrangements are excellent; bath rooms, lavatories, etc., of the latest devices and construction; the



Rose Point Hotel, Parry Sound.

bedrooms are lofty and well furnished, and arranged en suite for families; the table is good, and supplied with everything of the best in season; the house is electric lighted, and has telephone communication; there is also a daily mail and boat and train service. The hotel has its

own water supply from the pure waters of the bay, operated by a pumping plant, with water tank at the summit of a neighboring bluff.



*Monomines Rock, Rose Point.*

From the wide double balconies a splendid view is obtained of the islands and surrounding scenery, and from the adjacent hill tops the pretty town of Parry Sound is seen in the distance. A good supply of boats, canoes and sailing craft is kept in the fine boat house near the hotel, and a fine steam yacht, the "Carlton," is in commission for the use of guests. This yacht is available for excursion parties to neighboring fishing grounds and points of interest, and passengers are transferred by the "Carlton" from the station close by, of the new Ottawa, Arnprior and Parry Sound Railway, to the hotel, or to Parry

Sound,  $1\frac{1}{2}$  miles north, or to Depot Harbor 7 miles further on. The hotel,



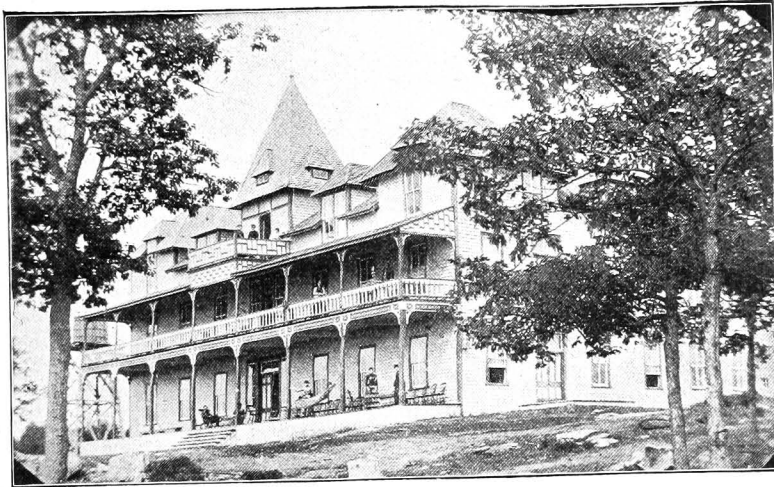
*Catch of Black Bass at Rose Point (average weight 2 lbs. to 4 lbs.)*

which is but a few minutes' walk from the new O. A. & P. S. Ry. station, is also reached by a good road, which winds its devious way by huge

hills and through dense forest to Parry Sound. There are numerous pretty walks and drives in the vicinity, and the proprietor, Mr. W. F. Thomson, keeps a conveyance specially for the use of guests desiring to visit surrounding points and the numerous inland lakes, many of which are but one hour's drive from the hotel, and are well stocked with speckled trout and black bass.

The hunting, deer, bear, partridge, duck, etc., is excellent in the neighborhood, and the steam yacht and buggy before mentioned are in frequent demand for the conveyance of hunting and fishing parties in summer and fall. Indian guides can easily be obtained for fishing and hunting parties.

A pleasant feature of this resort is the excellent sandy beach close



*Belvidere Hotel, Parry Sound.*

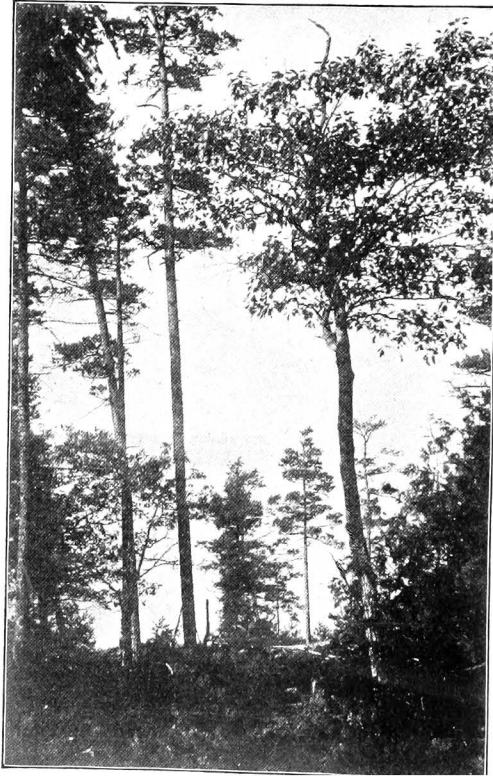
to the hotel, affording safe bathing for ladies and children. The post office address for this resort is Parry Sound. There is accommodation for 75 guests at the hotel.

Leaving Rose Point and following the channel in a northerly direction the good steamer speedily lands us at the wharf at Parry Sound, our destination for the present. Of the town itself we will treat later on, but our chief interest now centres in the

#### **BELVIDERE HOTEL.**

This is a handsome structure situated upon an eminence 120 feet above Georgian Bay, and commanding a view both picturesque and

grand ; to the west the rugged coast line with deep bays and wooded shores, with the ship channel stretching away into the distance, to the north hundreds of acres of dense forest with a background of blue hills, to the south, the south channel with a vista of island after island, verdure clad, of inexhaustible variety, and harboring deer, bears, foxes and other animals, to the east and behind the hotel nestles the pretty little



*Nushka (or Prospect) Point, Parry Sound.*

town of Parry Sound and only five minutes' walk from this romantic spot, but so secluded is the place that the town itself and all civilization might be 100 miles distant, for here we are in the solitude of a great forest, of calm waters, the solitude of nature.

Descend the hill to the north and enter the leafy glades of the beautiful Minnewawa Park and you will find yourself in a tract of primeval forest reclaimed from its native wildness but with its natural beauty untouched ; this park, hundred of acres in extent, has been reserved for the guests of the hotel, and nowhere else in America is such wild beauty of scenery to be enjoyed in such perfect comfort. The

park is full of romantic beauty, shady arching avenues and drives have been cut through its thick forest growth leading unexpectedly to miniature lakes well stocked with fish, and at times skirting the edge of the bay itself ; in a bend in one of these avenues is to be seen a veritable "bear house," where a family of bruins made their winter quarters ; deer, foxes, porcupines and other wild animals can be seen by those

who penetrate its leafy recesses. Returning from one of these drives one may come upon a wide grassy glade with the open sky above and on one side a steep barrier of rock, on the other the "forest wall"; this space is the "playground" where cricket, baseball, football and other games are indulged in, and many a friendly contest takes place between guests and townspeople, often ending in the victory of the latter. The grounds around the hotel are laid out with groves of young beech and maple. Tennis, croquet, golf and other pastimes are among the features of this resort, and for indoor amusement, the fine bowling alley will be found a welcome diversion, Boating of all kinds is of course a great attraction: row boats, sail boats, canoes, steam yachts, and all kinds of craft can be



*Lake Eriqua, Minnerawa Park, Parry Sound.*

obtained. The fishing and hunting is all that can be desired: black bass, pickerel, pike and maskinonge being plentiful, and out in the lake whitefish and lake trout are abundant. In the fall, deer, bear and fox hunting, and partridge and duck shooting are the favorite sports; skilful and experienced Indian guides are always to be had for hunting parties. In the bay, in front of the hotel, are numerous natural pools, partially landlocked, rendering bathing safe and enjoyable.

Hay fever is an unknown thing in this high and bracing region, the most severe cases being cured in a few days, the invigorating pine scented air acting as a marvellous tonic and restorer. The hotel itself is first-class in every respect, it contains spacious bedrooms, ladies' and gentlemen's parlors and reading rooms, a handsome dining room with modern

appointments and conveniences ; it is lighted by electricity and supplied with water from the town waterworks, which are near the hotel, the water is drawn from the lake (a natural rock bottom reservoir) and is of good quality. A beautiful view is obtained from the spacious double balconies ; and the modern system of iron fire escapes, with the close proximity of the water supply, ensures perfect safety from fire. The post office address of this hotel is Parry Sound. The hotel will accommodate 150 guests.

#### PARRY SOUND.

This picturesque and prosperous little town, with its environment of dense forest and rocky hills, is a great attraction and convenience to the

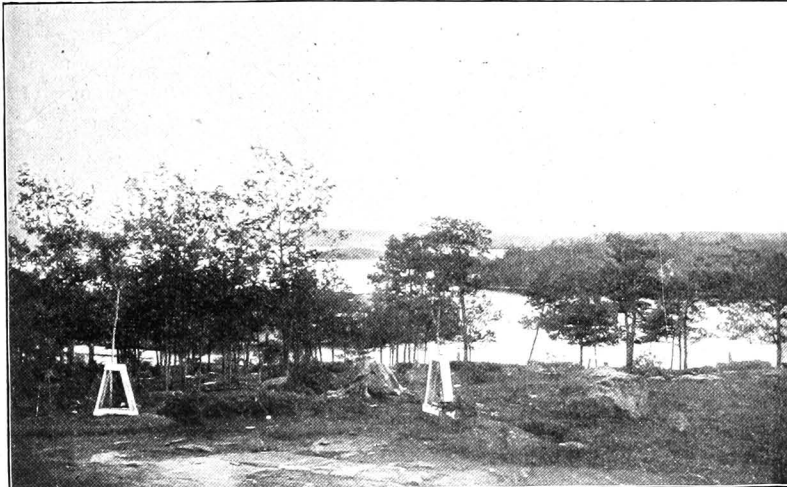


*"Hole in the Wall," Parry Sound.*

tourists and guests at the resorts above mentioned. Here will be found commodious stores, well equipped and stocked with everything necessary, good medical attendance is always available, and there is a bank and telegraph and ticket offices ; good horses and rigs can be obtained by those wishing to ride or drive through the surrounding country, and at the churches of various denominations the stranger is always welcome.

Parry Sound is of special interest from its historical associations ; the route followed by our steamer was the old highway of the Indian, the Jesuit missionary, the French trader and others, 250 years ago. The channel through which we have passed was the only possible route for the frail bark canoe of those early days, when the journey was made from

Quebec, up the St. Lawrence and Ottawa rivers, through Lake Nipissing and by the French River to Georgian Bay, then skirting by the coast through the sheltering islands of the South channel, and so on by the River Severn and the waters of Couchiching and Simcoe Lakes to Orillia and Barrie.



*View of South Channel from Belvidere Hotel.*

### **ROUND TRIP, TORONTO TO PARRY SOUND AND MUSKOKA LAKES.**

A VERY enjoyable and varied excursion trip is the following : From Toronto, by the G.T.R., to Penetang or Midland (about 100 miles); thence, N.S.N. Co. or G.N.T. Co., to Rose Point (60 miles); thence, O. A. & P. S'd. Ry., to Smith's Crossing or Maple Lake (15 miles); thence stage coach to Port Cockburn, at head of Lake Joseph (7 miles); thence, M.N. Co., to Gravenhurst (45 miles); thence, G.T.R., back to Toronto (110 miles). This trip can also be reversed.

The hotels are : Penetang, The Penetanguishene : Rose Point, Rose Point Hotel ; Port Cockburn, Summit House.

Tickets and all information at G.T.R. ticket offices.

### GRAVENHURST.

This little town of 2,000 inhabitants, for some time known principally as the headquarters for the Muskoka Lakes, has lately sprung into immediate prominence, and is already enjoying a continental reputation as the spot chosen by the medical experts, engaged by the National Sanitarium Association, for the erection of a Consumptive Sanitarium on an extensive and modern plan.

The erection and perpetual maintenance of such an institution on a sufficiently liberal scale to meet the grave and important demands of the objects sought, will involve a large expenditure, and having been asked by the Association to the extent of \$250,000 to maintain this and at least one other Sanitarium. Owing to the munificence of some of Toronto's wealthiest and most prominent citizens, aided by the hearty co-operation of the Town of Gravenhurst itself, various sums amounting to \$70,000 have already been pledged to the Association. To Mr. W. J. Gage, of Toronto, is due the inception of this philanthropic scheme, \$25,000 having been donated by this gentleman to the undertaking; this gift has been supplemented by a similar gift of \$25,000 from the late H. A. Massey, another prominent Toronto gentleman has contributed \$5,000, and Gravenhurst by a popular vote appropriated as its share \$10,000. Work has already been commenced on the foundations, and it is expected that by October, 1896, the Consumptive Sanitarium will be a *fait accompli*. The crusade against this dire disease has commenced in earnest, and a new era dawns for the consumptive.

The Sanitarium will be conducted on the cottage system, which, while undoubtedly expensive, is admittedly the superior method of treating this disease.

The size of the main building, containing reception rooms and physicians' apartments will be 100 x 60 feet, an adjoining wing containing dining room and kitchen will measure 80 x 22 feet, while another wing comprising lavatories and bathrooms will be 70 x 24 feet; several cottages will be built, and their number increased as necessity may demand; these cottages will accommodate four to six patients each. A fine verandah around the edifice will afford shady lounging places, and a lofty tower commanding an extensive view of the surrounding scenery, will be a prominent feature. Billiards, bowling, croquet, etc., will be among the amusements provided. An elevator will be included in the internal arrangements, to add to the comfort and convenience of patients. Mr. W. J. Gage, of Toronto is the Treasurer of the Association.

Gravenhurst is also displaying her enterprise in another direction; not only to cure the sick, but to amuse and entertain the tourist and



excursionist, her efforts are being put forth. The Gravenhurst Park Association has secured and laid out a tract of 75 acres adjoining the town, and flanked on one side by the pretty Gull Lake; 45 acres of this is being laid out as picnic grounds, ball grounds, etc., a great feature will be the half mile bicycle track, there is a 15 acre grove of beech and maple, and a mile of fencing will be used to enclose the park. The grounds are being leased for a term of years to the Agricultural Society for the Annual Exhibition, and this Society will erect buildings for the Annual Exhibition, which will be at the disposal of the Park Association while not in use by the Society. The Park Association is also erecting a fine two story grand stand 60 x 30 feet. Gravenhurst is rapidly filling up, and has a prosperous future. It is 110 miles north of Toronto, on the G.T.R., and has good hotel accommodation and stores.

### MUSKOKA LAKES.

This district, known as the "Highlands of Ontario," is reached by the G.T.R., N. & N.W. division, from Toronto to Gravenhurst (Muskoka Wharf)—112 miles—thence by Muskoka Navigation Co.'s fine steamers to any point on the lakes, (by through ticket), direct to hotel, camp or cottage.

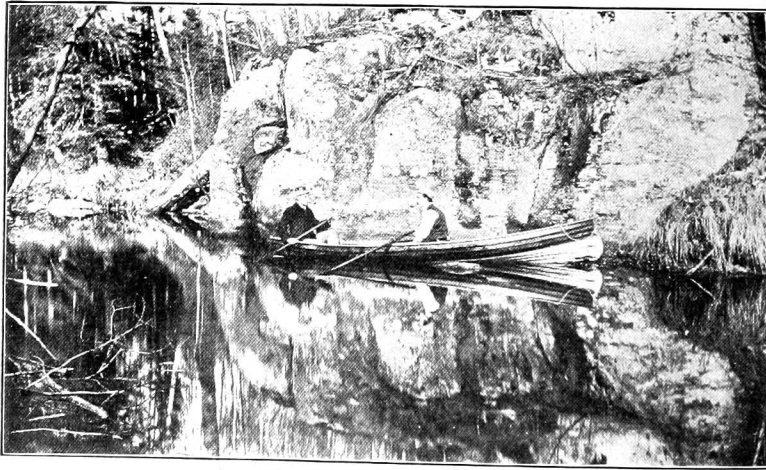
The Muskoka Lakes are generally understood as comprising the three lakes—Muskoka, Rosseau and Joseph, although there are upwards of 800 lakes and 400 islands in this beautiful region, their size, formation, and diversified charms of scenery, being so varied and inexhaustible as to baffle description. This district is about 800 feet above sea level.

The journey through these lakes is one full of delightful surprises and enjoyment. Muskoka, the first lake, is 21 miles in length, from the wharf at Gravenhurst to Port Carling; Beaumaris is the first port of call on this lake and the fine hotel at this place gives the tourist a very pleasing impression of hotel life in Muskoka. Beaumaris is the connecting point for Bala Falls, and the Moon and Muskosh Rivers. The Muskoka River empties into this lake about half way between Gravenhurst and Beaumaris, on the east shore, and the Moon and Muskosh Rivers, emptying from the same lake on the western shore, at Bala, carry the waters of the Muskoka Lakes and region to the Georgian Bay.

From Port Carling, which is the junction of Lakes Muskoka and Rosseau, to the head of the latter lake is 12 miles, and after passing through the lock at Carling, the steamer winds its way through the thickly clustering islands, which, with their many cottages are known as "Venetia,"—a veritable fairyland. There are many good hotels on Lake

Rosseau, besides a most picturesquely situated hostelry at Port Carling. Lake Rosseau is fed by many pretty rivers and streams, of which the famous "Shadow River" is the gem, it is nature's mirror, and the vivid reflections on its surface are strangely deceptive.

Lake Joseph, which is connected with Lake Rosseau by a narrow channel, is 14 miles long from Port Sandfield, at its junction with Rosseau, to Port Cockburn, at its head. Joseph River which empties from Joseph into Rosseau Lake is a pretty stream, and was at one time the only outlet to the former lake. At Port Sandfield, situated between these two lakes, is one of the most popular hotels on the lakes, especially for young people and those fond of the gaiety which is enjoyed in no other way as in Muskoka.



*Scene on Shadow River, Lake Rosseau.*

In the spring and fall excellent fishing is to be had, and later on the best of deer hunting. Talking of fishing, the enthusiastic angler should visit the famous Crane and Blackstone Lakes, where black bass, pickerel and muskellonge are exceedingly plentiful. One route is by way of Gordon Bay and Portage Lake with some small lakes and portages, a more convenient way being by way of Port Cockburn, thence 8 miles stage journey to Maple Lake Station on the new Parry Sound Railroad and on to Folding, close to Blackstone Lake. Guides can be procured there, and indeed in any part of these lakes good guides and boats can be secured at moderate cost.

# Map of the MUSKOKA and MIDLAND LAKE DISTRICTS.

on the GRAND TRUNK RY.





There are few districts which are so extensively patronized by tourists as Muskoka, and during the summer season the many excellent hotels are taxed to their utmost capacity. These hotels are comfortable and well equipped, and the inner man is well provided for. In the hotel directory in another part of the work will be found particulars of these, while illustrations of some of the leading houses which are more fully described in this article will serve to give an idea of the accommodation and attractions to be obtained in Muskoka hotels.

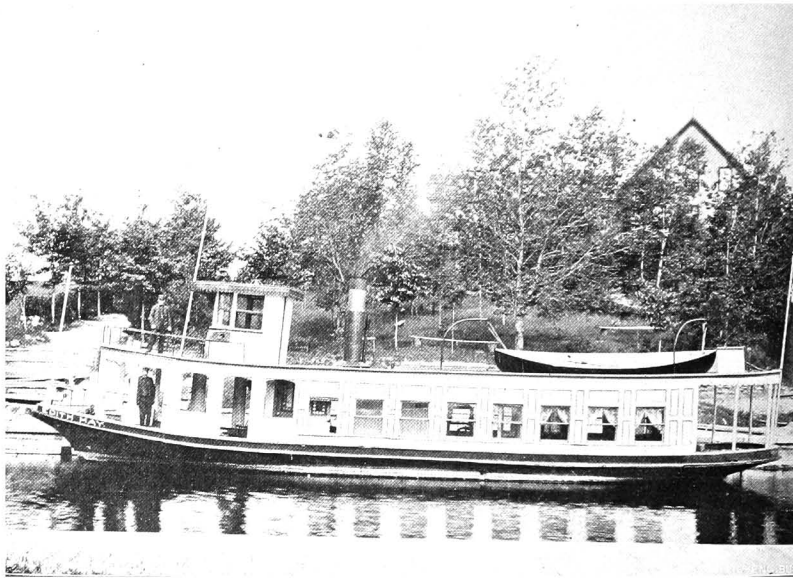
Cottage life on the many islands and points is a most popular and delightfully Bohemian style of rustication in Muskoka, many families from



*M. N. Co.'s S.S. "Medora," at Port Carling.*

neighboring cities and from the United States having built pretty residences on some choice islands or points of land. For those not so fortunate as to own one of these pretty residences, there are many charming cottages which may be rented furnished for the season, a description of which will be found in the Cottage Directory at the end of this work. No anxiety need be felt as to means of "shopping" by those who choose this more secluded method of summering, as the supply boats which ply on the lakes call at all cottages, camps and hotels with full supplies of everything requisite from a needle to a sack of flour.

The accompanying illustration of the "Edith May" will show to prospective cottagers what this floating store is like ; it is quite a well-known feature of Muskoka to the regular resident, its cheerful whistle sounding across the water, calling the occupants of the various houses to the wharf to purchase their supplies of household necessities and luxuries. Messrs. Homer & Co. of Gravenhurst, are the owners of the craft ; and for years they have made a special study of this business, and consequently are fully alive to the diversified requirements of the sojourners from the city : the boat carries first-class and completely assorted stock of everything one could possibly want during the season's outing, such as dry goods,



*"Edith May," Supply Boat.*

groceries, crockery, flour and feed, boots and shoes, hardware, stoves, tinware, fresh and canned meats, vegetables, fruit, potatoes, etc. This supply boat "stocks up" at the branch store at Rosseau, and makes the rounds of Lakes Joseph and Rosseau regularly twice or three times every week, delivering goods and taking orders for delivery on the next trip.

The splendid service given by the excellent steamers of the Muskoka Navigation Company has done much towards popularizing the Muskoka Lakes amongst tourists. The fleet numbers 5 boats, well equipped and officered, first-class meals are served on board and every courtesy and attention is paid to tourists bound for hotel, cottage or camp.

For the benefit of the uninitiated we will now describe a few of the popular Muskoka hotels, and would here remark, that the exceedingly moderate rates charged, and the comparative excellence of the accommodation and appointments enable the attractions of Muskoka to be enjoyed in perfect comfort by those of the most moderate incomes, although the luxuries of a "Waldorf" or "Windsor" are not to be expected.

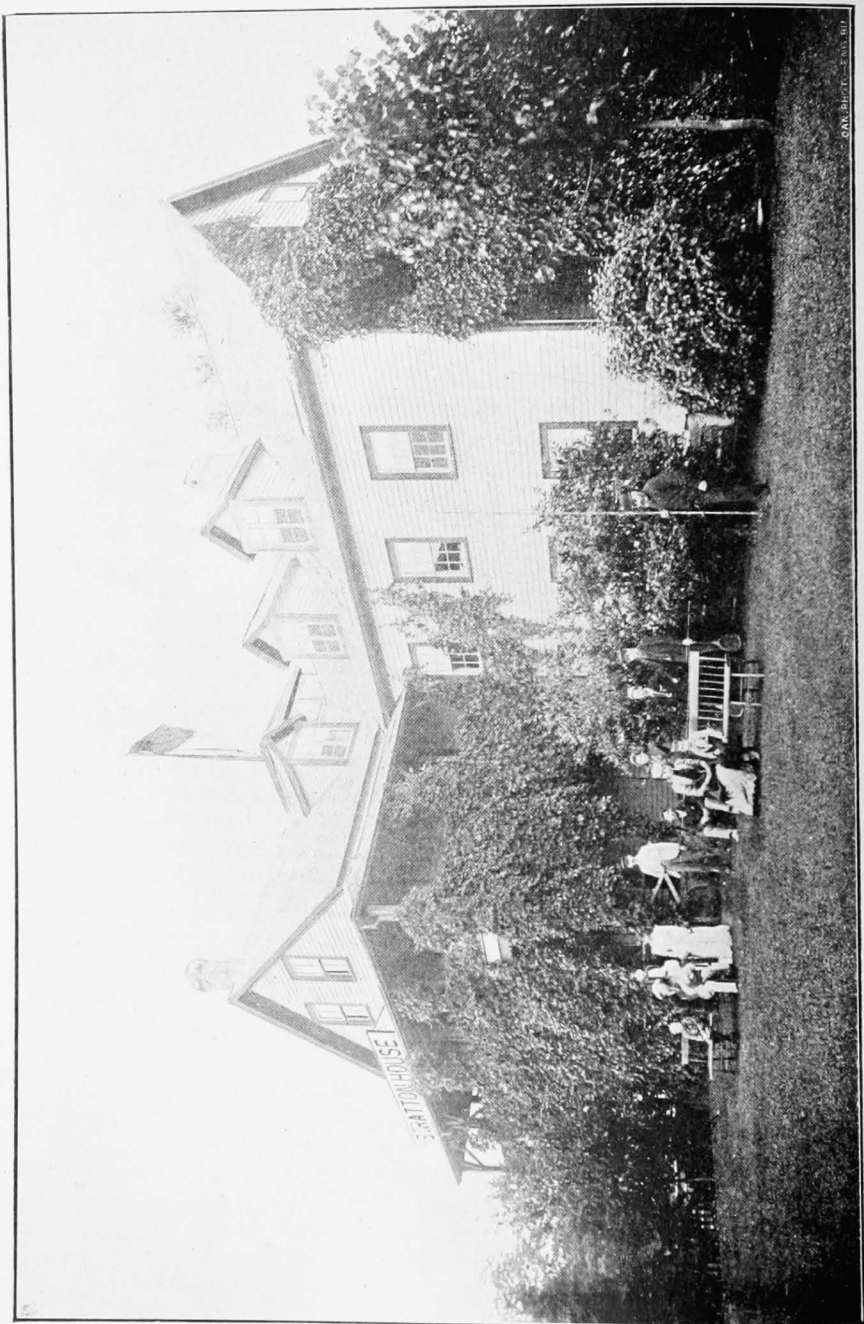
#### BEAUMARIS HOTEL.

This excellent house kept by Ed. Prowse, as already mentioned, is the first to greet the tourist's gaze on the "up journey." It is situated on Tondern Island on Muskoka Lake, and is in close proximity to good fishing grounds (bass and pickerel), and to several good fishing and social clubs from Pennsylvania whose handsome club houses are close to the hotel. Good boating and bathing, lawn tennis and cricket are among the outdoor amusements, and billiards, bowling and dancing are some of the indoor pastimes indulged in. There is a daily mail and express office, and an excellent table is kept. There is accommodation at Beaumaris for 200 guests. Beaumaris is the Mecca for hay fever patients, the bracing atmosphere and fresh breezes effecting a complete cure of the most obstinate case.

#### STRATTON HOUSE, PORT CARLING.

This is the popular house at the "Port," and is chosen by many as their resting place on account of the life and bustle of the arriving and departing steamers, all of which pass through the lock here on the up and down journeys. Any point on the lakes is easily reached from this spot, and the numerous excursions, and the meeting of old friends add to the variety of enjoyment to be had at this central locality. There are many very romantic walks in the vicinity of Port Carling, one through the woods to Ferndale, another to the old Indian burial grounds, while a short walk brings one to Silver Lake, 140 acres in extent, where excellent bass fishing is obtainable, and but a half a mile distant is to be found the curious pitcher plant in great numbers. Added to the many attractions to be enjoyed, such as boating and bathing and fishing, we would mention the free public library and reading room, containing about 400 volumes of standard works, and the leading magazines and Toronto dailies.

The Stratton House, of which John Fraser is the proprietor, has accommodation for about 50 guests, and contains comfortable and airy bedrooms, dancing room, etc., and a good table is kept; the house is surrounded by well-kept grounds with summer houses, and an excellent level tennis lawn, and from the piazzas of the hotel some very fine views can be enjoyed of the surrounding scenery.



*Stratton House, Port Carling.*



### PROSPECT HOUSE, PORT SANDFIELD.

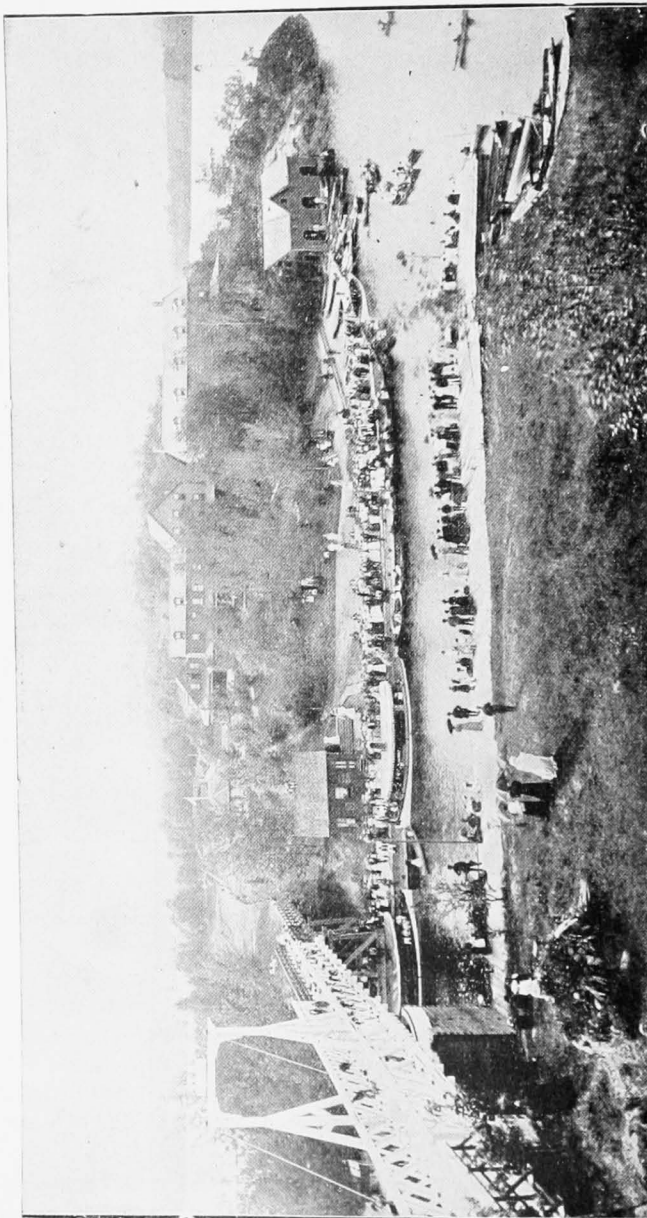
We have already briefly referred to this very popular resort. There is an indescribable, though by no means unaccountable charm about Port Sandfield, it is *par excellence* a resort for young people, and its attractiveness may be attributed in large part to the constant life and gaiety of the place as well as to the undoubted popularity of the proprietor, Mr. Enoch Cox; a sojourn at Port Sandfield with its round of amusements, boating and walking parties, lawn tennis, concerts, dances, etc., is a sure antidote for *ennui*, while at the same time the student of nature and lover of solitude will find ample opportunity in the delightful scenery for contemplation of the beautiful, for botanizing, and the



*Deer Hunting Party at Rosseau.*

indulgence in that *dolce far niente*, which is the most efficacious restorer of over-worked systems.

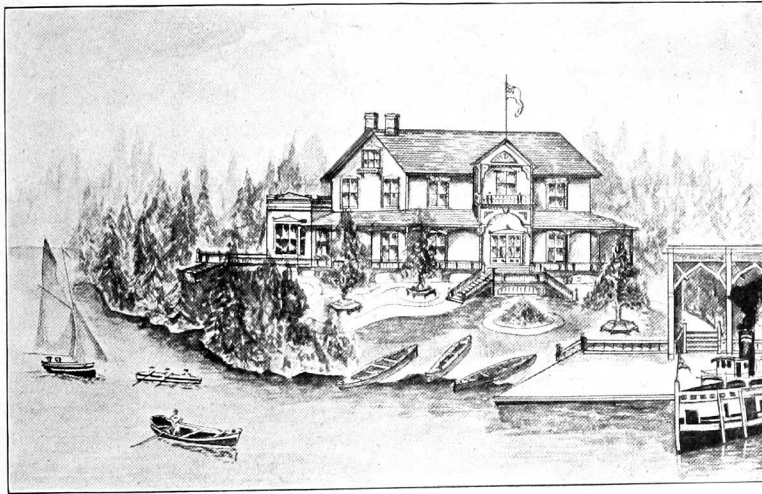
There is an excellent sandy beach at Port Sandfield, perfectly safe for ladies and children, fine tennis courts, good boats and large ballroom. The hotel—Prospect House—is a well equipped structure, with accommodation for 200 guests, and contains post and express offices, and an excellent *menu* is provided. A good view is obtained of Lakes Rosseau and Joseph from the shady verandahs of the hotel, and from the mountain, 180 feet high, which is situated across the fine Government bridge over the channel. The annual regatta held at Port Sandfield during August, is one of the events of the season, and attracts competitors from all parts of the lakes.



*Prospect House, Fort Sandfield.*

### GORDON HOUSE, GORDON BAY.

In many respects this resort on Lake Joseph, is very favorably situated, it is the headquarters of the chain of lakes leading to the famous Crane and Blackstone Lakes of fishing repute, being but 15 minutes row from Portage Lake, where there is the best of sport. The hotel occupies an elevated position on an eminence overlooking Gordon Bay ; this bay in reality forms a spacious harbor, being well sheltered and affording excellent accommodation for the indulgence of rowing, canoeing, sailing and bathing in calm water. Gordon House which has accommodation for 50 guests, was but recently built by Mr. A. Winter, and the air of homelike comfort pervading all the arrangements of the place is the result of the careful personal study of the proprietor to meet



*Gordon House Gordon Bay, Lake Joseph.*

the requirements of his guests. A liberal table is supplied, and a first-class piano is at the guests' disposal.

A novel feature which will be found a great convenience to amateur photographers, is a dark room set apart for their special use ; there is also a well lighted room available as a study for artists, and Miss Winter (an academy graduate), is always happy to assist lady artists in their work and studies. In the grounds around the hotel are many sequestered and shady nooks, and Gordon Island in the centre of the bay and part of Mr. Winter's property, will be found a delightful spot for moonlight and picnic parties.

The Post office address is Gordon Bay, P.O.

To the east of this resort is Stanley House across Lake Joseph, and at the head of this beautiful lake is the well-known Summit House, Port Cockburn, a popular headquarters for visitors from the United States.

There are several excellent hotels on Lake Rosseau, among them, "Ferndale," the "Windermere" at Windermere, and "Morinus" and "Clevelands" Hotels at Clevelands, and "Maplehurst" and "Monteith's" at Rosseau, at the head of the lake; also numbers of boarding houses, the one at Juddhaven being well-known for its situation and the pretty walks in the neighborhood, the shaded walk along the lakeshore to Snow's being very popular with the guests at this resort.

A separate volume might be written describing these beautiful lakes, and a great deal has been written extolling the many beauties and subtle charms of this favored locality, but the foregoing information may be taken as an index to the whole, a mere brief glance at one of Nature's matchless scenic gems.

#### ON THE N. & N.W. DIVISION OF THE G.T.R.

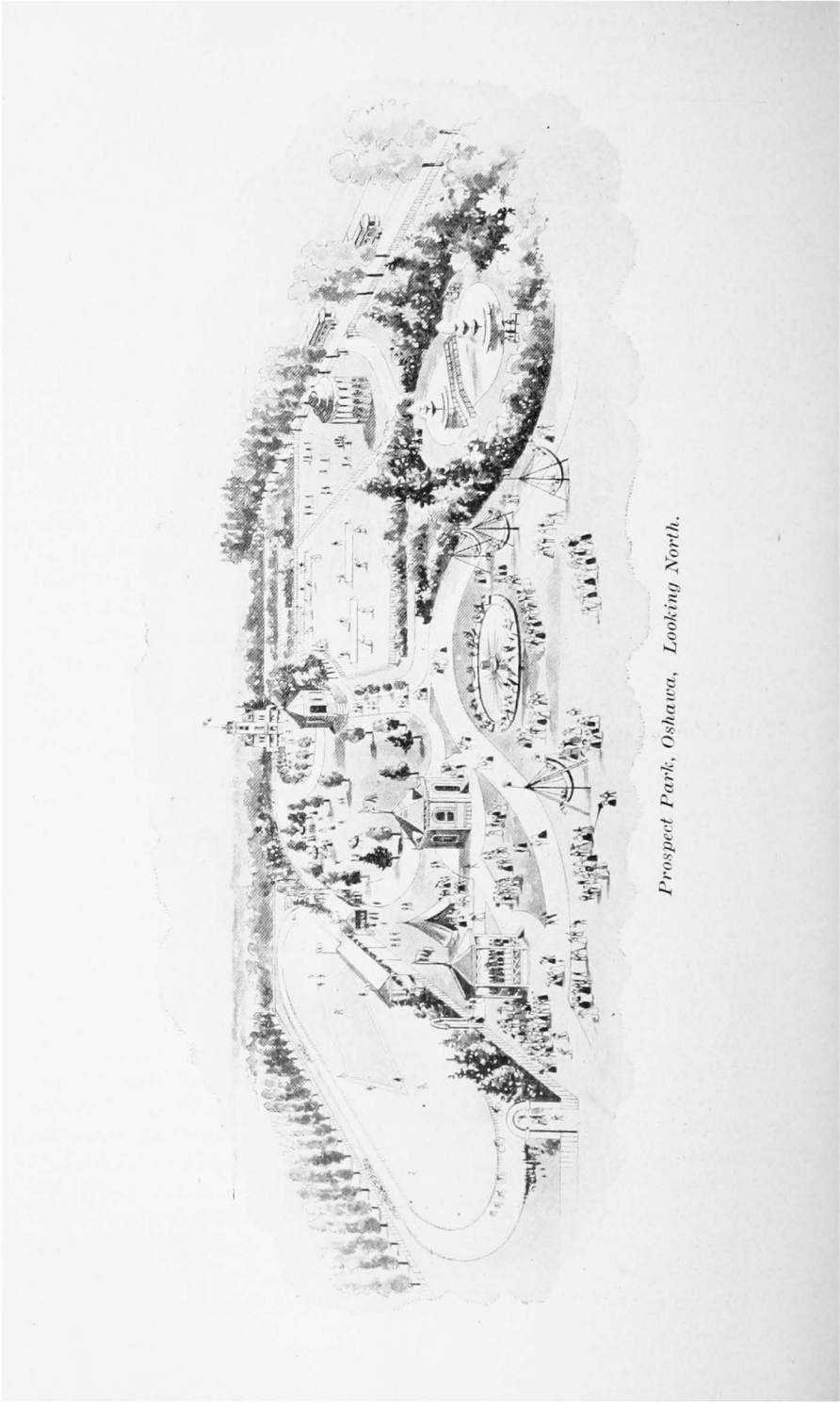
Many of the prettiest towns and best fishing, hunting and summer resorts are situated in the northern district reached by this line. **BARRIE**, 64 miles north, and the first place of importance in this respect is a charming town of over 6,000 inhabitants, on the west shore of beautiful Lake Simcoe, it has good hotels, fine stores, churches and schools, and is headquarters for the well-known Peninsular Park Hotel. 22 miles further north, **ORILLIA**, population 5,000, is reached, situated picturesquely between Lakes Simcoe and Couchiching, this is a well-known tourists' resort, and like Barrie has fine buildings and stores and shady streets, Strawberry Island is the popular resort of this town. Next **GRAVENHURST**, 110 miles from Toronto, and already mentioned, and **BRACEBRIDGE** with 2,000 population, 12 miles further north, on the Muskoka River, a pretty town, and headquarters for the Bala trip on the Muskoka Lake by the M. N. Coy's boats. 24 miles further on, **HUNTSVILLE** is reached, the "Switzerland" of Ontario, the surrounding lakes rivalling those of that romantic country. **Huntsville**, a town of 1,500 inhabitants, is one of the prettiest summer resorts in Canada, the stores are first-class, the hotel accommodation good, and the place is rapidly growing into favor on account of its lovely scenery and other attractions. **KATRINE, BURK'S FALLS**—headquarters for the Magneta-wan and Ahmic Lake trip of the M. N. Co'y. **SOUTH RIVER, TROUT CREEK**, etc., are famous for the excellent fishing afforded on their rivers and streams. **NORTH BAY** the terminus of this line, is the connecting point for the C.P.R. main line to the west.

## **PROSPECT PARK, OSHAWA.**

It would be difficult to find so picturesque a resort within such a short distance of Toronto as Prospect Park, Oshawa.

The town of Oshawa (with 5,000 population) is on the main line G.T.R. between Toronto and Montreal, and is but thirty-five miles (one hour's journey) from Toronto. It is a very prettily laid out town with fine residences, good high school and ladies' college, and important manufactories, and is situated near the lake shore.

Prospect Park is located on the western outskirts of the town, on the highest point of land in this vicinity, and is reached by the electric railway direct from the railway station, the cars passing by the entrance gates. The grounds of the park, eleven acres in extent, are beautifully laid out, costing, together with the buildings, \$30,000. Situated in the western extremity of the grounds is a picturesque mansion of white brick with shady verandahs, from which a full view of the park is obtained, the spacious velvety lawns dotted with shrubbery and ornamental fountains, the dark cool green of fragrant balsam and cedar contrasting with the brighter tints of beech, maple and silver birch, the universal carpet of greensward intersected by gravel paths, and the whole forming a pleasing picture of sylvan beauty. To the right through the intervening foliage peeps the roof of the refreshment pavilion and dining room, a commodious, well-ventilated building, containing at one end a small stage for concerts and entertainments; beyond is a first-rate quarter mile bicycle track, elliptical in form, and planned and graded under the supervision of a competent civil engineer; the foundation is of hard, white clay with a surface of brick dust and ashes; inside this track is the ball ground, where games and sports are indulged in, and a spacious new grand stand affords accommodation for the spectators, from which a fine view of the undulating country is enjoyed. To the left of the house are the fine tennis courts (four in number), and adjoining these is the bowling green. Fronting the house are a pretty glass summer house, and ice cream parlor, and beyond are to be found "fairy glens" of balsam and cedar, cunningly planted in circles and semi-circles, with seats conveniently ranged round the insides, and in the shady recesses fountains, spanned by rustic bridges. At night the grounds are lighted by electric lights, throwing into deeper contrast the avenues, shrubbery and dark dells, making a veritable fairy scene, with the musical splash of the fountains playing a soothing accompaniment; the whole scene enlivened by the music of the fine town band of thirty-six pieces. Bicycle meets, lacrosse and baseball matches, lawn tennis tournaments and sports and entertainments of every description are in progress day and night during the season.



*Prospect Park, Oshawa, Looking North.*

Special arrangements are made with Sunday schools, societies and others for excursions and picnics, the grounds and buildings affording ample accommodation for the largest excursions. Excursion parties are taken from Toronto to the Park gates without change of cars.

Excursion rates from Toronto are: Societies, 60 and 35 cents; Sunday schools, 45 and 30 cents, for return coupon ticket by G.T.R., and Oshawa Street Railway, including entrance to park, with all the privileges of the park enumerated above, and hot and cold water. The very low adult rate will enable picnics to be conducted practically without cost by margin obtainable on sale of tickets. There is accommodation at the house which is electric lighted and well furnished, for a few summer boarders at rates from \$8 to \$10 per week.

All enquiries should be addressed to E. S. Edmondson, Oshawa.‡

## OTTAWA.

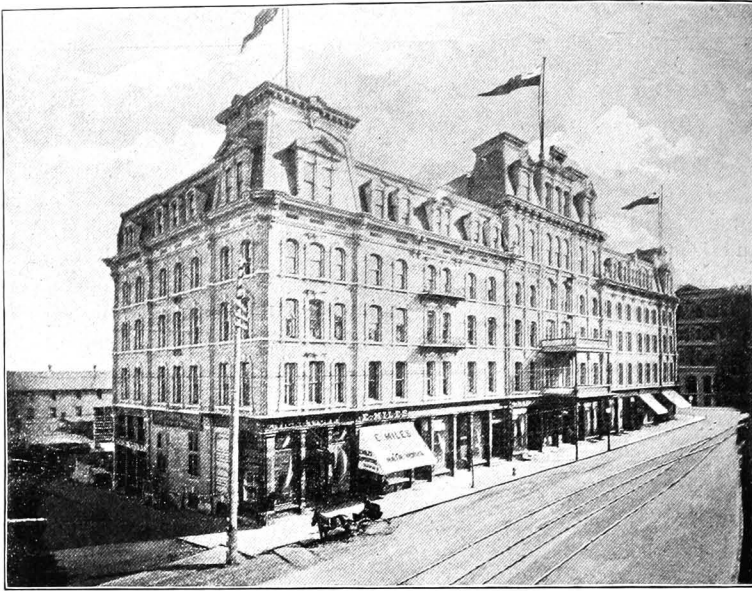
SITUATED on the southern bank of the noble river of the same name (the subject of Moore's beautiful boat song) stands the capital of this fair Dominion.

Ottawa (45,000 population) is reached by the C.P.R. main line between Toronto and Montreal (256 miles from Toronto and 182 from Montreal), also from Brockville and Prescott (branch lines connecting with G.T.R. main line).

The central attraction is of course the Government Buildings, on Parliament or Barrack Hill, originally the site of the barracks of the early days of 1826. Ottawa was then and for several years known as Bytown, after its founder, Lt.-Colonel John By, R.E. The Government buildings are of white stone



Scenes on the Gatineau.



*Russell House, Ottawa.*



*Grand Union Hotel, Ottawa.*



and of beautiful architectural design ; the centre block contains the Houses of Parliament, on the east and west of this block are the Departmental buildings, and facing them all is the new Departmental building known as Langevin Block.

Among the many places and scenes of interest to tourists the principal are Chaudiere Falls ; Rideau River and Falls ; Rideau Canal, connecting with the St. Lawrence River at Kingston, and to which Ottawa owes its existence ; Nepean Point ; Rockcliffe Park ; Rideau Hall, the Governor-General's residence ; and the adjacent summer resorts of Britannia and Aylmer, on Deschenes Lake ; Chelsea ; and the beautiful fishing resorts on the Gatineau River, reached by the Ottawa and Gatineau Railway ; and well-known resorts on the Canada Atlantic Railway.

Ottawa boasts of fine stores, public buildings and residences, and first-class hotels with every accommodation for tourists ; among the principal are the Russell, with accommodation for 450 guests, with all modern equipments, and the headquarters of members of Parliament and public men. Grand Union, a fine hotel, and much patronized by members of Parliament, tourists and business men, with accommodation for 150 people, and the Windsor which shares equally the patronage of the travelling community with those mentioned ; this fine hostelry will accommodate 200, and is first-class in every respect. The hotels enumerated are situated most centrally, close to the Parliament and public buildings, and on the lines of Ottawa's splendid electric street railway system.

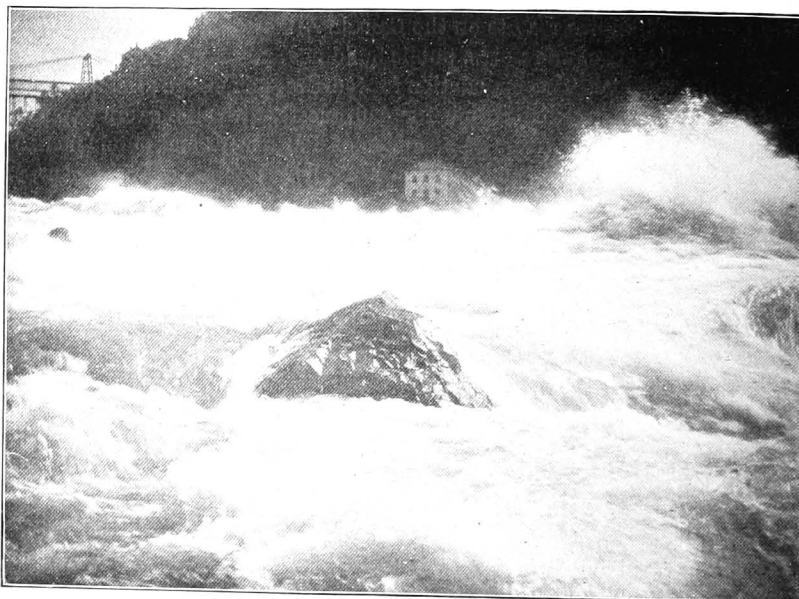
### **RIVER ST. LAWRENCE, THE THOUSAND ISLANDS, QUEBEC, AND THE SAGUENAY.**

THE beauties of this trip have been oftentimes extolled, so repeatedly indeed, and so exhaustively that little or nothing can be added, and any attempt at adequate portrayal of the grandeur and charm of the great works of nature to be enjoyed on this route, which we will briefly sketch, is insignificant, compared with the reality. They must be seen to be appreciated.

The favorite and most convenient route for tourists from the United States is by way of Niagara Falls, where many days might be spent in contemplation of this awe-inspiring masterpiece of the Creator.

From the Falls the electric line, or railroad is taken to Queenston, from thence Niagara Navigation Company's steamers across Lake Ontario to Toronto, the beautiful Queen City of Canada, which has already occupied our attention in the early part of the work ; from Toronto the journey is by Richelieu and Ontario Navigation Company's fine steamers. Leaving this fair city behind the journey is continued along the north coast of Lake Ontario, and the trip is enlivened by the numerous stops

made at ports and towns and cities along the line of travel—one of the most interesting of which is Kingston, the Limestone City, a great military and educational centre with the Royal Military College, Queen's University, Fort Frederick, Fort Henry and the Martello towers. There is a fine tourist hotel here, close to the steamboat wharf and railway station, the Hotel Frontenac adjoining the British American, with a total capacity for 300 guests, under the careful management of the popular Mr. Thos. Crate. Kingston is worthy of more than a passing visit, it has many points of great interest, and is the headquarters for local excursion lines to the Thousand Islands.



*Whirlpool Rapids, Niagara Falls.*

A very charming variation in this section of the route, and followed only by the S. S. "Hamilton" on the up and down trips, is by the inside channel through the Murray Canal to Belleville, a beautiful city on the Bay of Quinte, with one of the finest and best equipped hotels in Canada—the Hotel Quinte.

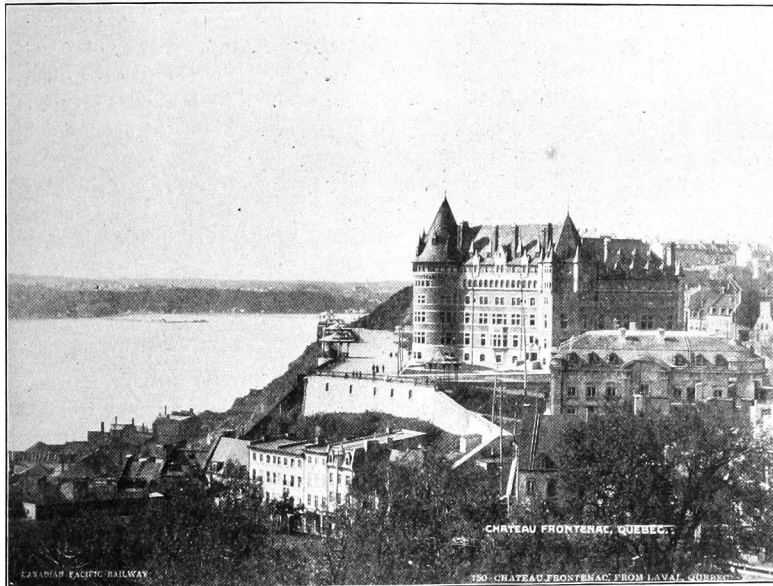
Across the bay from Belleville is Massassaga Park, a charming resort of Belleville, and as we journey towards the eastern entrance of the bay Capt. John's Island or Foresters' Island Park is passed, which is more fully dealt with later on.

After Kingston Gananoque is reached with a fine summer hotel.

From Kingston to Brockville (50 miles) the journey between the beautiful islands, 1,700 in number, fairly commences.

We are now entering the mighty St. Lawrence, and for several hours island after island is passed of every conceivable shape, size and formation.

Many islands are passed before Brockville is reached, those occupied by Americans having their natural beauties cultivated to such a degree that, with the costly mansions erected thereon, it is as if Fifth Avenue, New York, had been transported to this natural paradise, while most of the Canadian islands retain their primeval beauty. Passing Brockville and Prescott, well-known summer resorts on the Canadian shore, we



*Chateau Frontenac, Quebec.*

now experience that exciting and thrilling trip through the boiling rapids of the St. Lawrence, when the heart stops still and the breath is caught as the good boat ploughs among the breakers to apparent destruction on some of the half-hidden rocks. But the trusty pilot steers a safe course : and entering calm water again, Montreal is reached, the metropolis of Canada, the city of cathedrals and churches, of great industries, massive public buildings and private mansions. There are many fine hotels here : Windsor, St. Lawrence Hall, Balmoral, Queen's, etc., and sufficient to interest the tourist during many days sojourn in this fair city.

Continuing the journey past Helen's Island, through Lake St. Peter, and past Three Rivers, we reach Quebec, the "Gibraltar of Canada," the ancient city, full of historic associations, the scene of the heroic deeds of our forefathers, of the immortal Wolfe. No traveller will leave this city without first exploring its beauties and attractions, visiting the citadel, and dwelling on the gallant deeds wrought by heroes of old.

Modern civilization here vies with ancient association and tradition to attract the tourist in the grand situation and first-class appointments of the Chateau Frontenac, the finest hotel in America.

Regretfully leaving this old city behind for the time we take the boat again, and head for Saguenay, and passing between Isle of Orleans and Grosse Isle, we arrive in time at the famous summer resorts: Murray Bay, Riviere du Loup, Cacouna and Tadousac, and now enter the noble and sombre Saguenay, flowing between gigantic cliffs, with the hush of death on the dark bosom of its waters; then on past Cape Eternity, 1,700 feet high, to Ha! Ha! Bay, and rest at last at Chicoutimi our destination for the present.

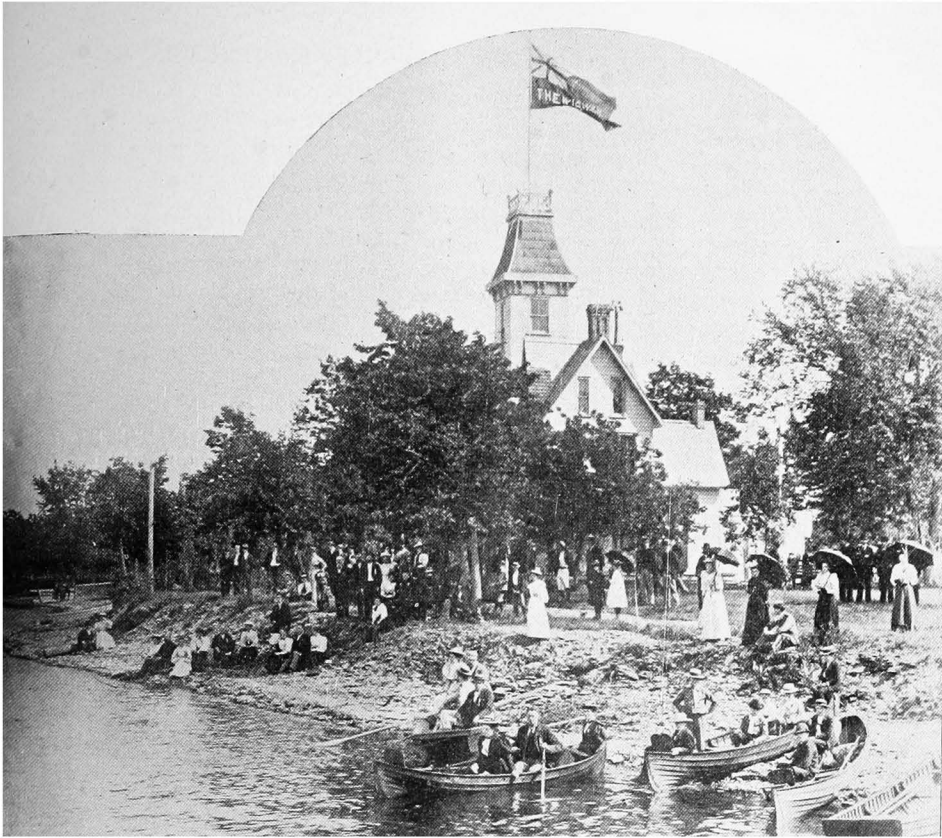
There are fine hotels at all the resorts just mentioned, and the best of fishing, the noble Quiananiche (Wa-na-nish), or land locked salmon, the most warlike fresh water fish, affording all the excitement one may want.

At Pointe Levis connection is made with the Intercolonial Railway for the many beautiful seaside resorts of the Maritime Provinces.

The return trip from Chicoutimi can be varied by taking the Quebec and Lake St. John Railway to Quebec, allowing opportunity of visiting that pretty sheet of water, Lake St. John, with its fine "Hotel Roberval."

### **FORESTERS' ISLAND PARK.**

THE Bay of Quinte is one of Nature's "beauty spots." It would be difficult to find anywhere more varied or charming combinations of water, land and sky than are presented for the enjoyment of those who make the trip by boat from the Murray Canal to the "Gap." Centrally located in this rare aggregation of natural loveliness is an island gem, lying opposite the town of Deseronto and about midway between the Hastings and Prince Edward shores, owned by Dr. Oronhyatekha, Supreme Chief Ranger of the Independent Order of Foresters. A marvellous transformation has taken place in the island during the past year. What the traveller now beholds as he sails by is first a handsome villa in which the doctor and his family spend the summer, known as "The Wigwam," and a little to the north an inviting pavilion with capacious dining and refreshment rooms attached, a magnificent music hall, a band stand, and several neat cottages occupied by people who appreciate the invigorating



*"The Wigwam," Forsters' Island Park.*

qualities of Quinte's ozone, as well as the restfulness of its beautiful scenery. Other improvements there are, and more to follow, making the Park one of the most delightful, as it is one of the most healthful, resorts for rest and recreation to be found in Canada. The Park has the great advantage of being easily accessible. It is only a ten-minutes' row to Deseronto, the terminus of the Bay of Quinte Railway, which connects with all trains on the Grand Trunk Railway, while all the Bay steamers, as well as those of the R. & O. N. Co. mail boats between Montreal and Toronto pass daily, and either call at the Park or at Deseronto.

The opposite view of "The Wigwam" and its surroundings was taken by our artist on the occasion of its dedication to the Independent Order of Foresters. Persons desirous of securing cottages for the summer should correspond with Dr. Oronhyatekha, Toronto.

### QUEBEC TO THE MARITIME PROVINCES.

To describe the various fashionable watering places on the route followed by the Intercolonial Railway from Quebec (Levis) to Halifax, N.S., and Sydney, C.B., would require a separate volume, and the subject is one which deserves more than the passing notice which we are giving.

Among the leading summer resorts reached after leaving Quebec are: Riviere du Loup, Cacouna, Bic, Rimouski and Little Metis, on the St. Lawrence shore; then Metapedia, Campbellton—first stopping place in New Brunswick—and Dalhousie, at the mouth of the Restigouche River, which empties into Baie des Chaleurs, and the headquarters for the famous Gaspé basin trip.

Continuing the railway journey Moncton is reached, the heart of the Intercolonial Railway system, famous for the "bore" or tidal wave from the Bay of Fundy which races up Petitecodiac River. We may now branch off to the famous seaport St. John, New Brunswick's capital, and a great railway and shipping terminus, or continue the journey to Halifax, Nova Scotia, like St. John a great terminal point for Atlantic shipping and tourist travel.

Halifax is a great attraction as a military post for British troops, and is very English.

The branch line to Sydney, Cape Breton Island, opens up many good summer resorts worthy of a visit, and Prince Edward Island across Northumberland Straits from Pictou or Point du Chene is also of interest.

The hotels of the Maritime Provinces are first-class in every respect, and tourists will find every accommodation and comfort, endless sight-seeing and amusement, and pervading all—the smell of the salt, salt sea.

### HALIFAX SUMMER CARNIVAL.

AN event of considerable interest and importance, and one which will lend an additional attraction to that beautiful city by the sea, will be the Grand Summer Carnival to be held at Halifax, Nova Scotia, from July 28th to 31st of this year.

No pains are being spared to make this the international aquatic event of the season; the best oarsmen of Canada and the United States will compete in the various races, and it is expected that representative crews from England will also take part. There will be yacht races, various kinds of boat races, harbor illuminations, and the city will be *en fête* during the carnival.

Reduced rates will be made on the railway and steamboat lines, and special excursions will be run on the I.C.R. & D.A.R.

Secretary McCreith, Halifax, N.S., will willingly furnish full information as to details.

## **RESORTS OF ONTARIO, ERIE AND HURON LAKES, ETC.**

In addition to the tourist routes and resorts already described, there are many pretty towns and watering places deserving of special mention on these three lakes.

On the north shore of Lake Ontario and reached by the Grand Trunk main line east, are the towns of Whitby, (30 miles from Toronto); Oshawa, (35); Port Hope, (63); Cobourg, (70); Trenton, (101), connection with Picton and the curious "Sandbanks"; the city of Belleville, (113), one of the most picturesque cities in Ontario; Deseronto, (135); the historic city of Kingston, (163), and Gananoque, (182), connection at both places for the Thousand Island excursion trips; Malloytown, (195); Brockville, (208); Prescott, (220), etc.; many of which have received earlier mention in the work.

On Lake Erie's northern shore are such pretty resorts, as Port Dover and Port Stanley on the G.T.R. between Buffalo and Detroit, (and easy of access from Toronto and all parts of the States); Walkerville on this line and near Windsor and Detroit, is the connecting point for the fine Mettawas Hotel of Kingsville. From Detroit to Sarnia is but a short trip, and the attractions of Sarnia have great claims on the tourist, fine hotels, parks and adjacent resorts, and the great St. Clair Tunnel, the largest river tunnel in the world, being over 2½ miles long.

On Lake Huron are three pretty towns, Goderich, Kincardine and Southampton, which boast of more than ordinary claims on the summer traveller; they are situated on branch lines of the G.T.R.

Among other resorts west of Toronto may be mentioned Preston, Brantford and Elora, besides many more on the G.T.R., not forgetting the popular excursion trips already referred to from Toronto to Hamilton, St. Catharines, Gimsby Park, Lorne Park and Long Branch.



**Before leaving Toronto** obtain a supply of

**HEREWARD SPENCER & CO'S**

**WELL-KNOWN 40c. TEA**

Orders of **10 lbs.** and upwards **delivered free** to any Railway Station in Ontario or Quebec on receipt of P.O. Order for amount of purchase.

Pure Indian and Ceylon Teas **40c., 50c., 60c.** per lb.

*HEREWARD SPENCER & CO.,*

**Tel. 1807. 81 KING ST. W., TORONTO**

*(Assessment System).***INDEPENDENT ORDER OF FORESTERS.***Oronhyatekha, M.D., Supreme Chief Ranger.***THE I. O. F. SYSTEM.**

**EVERYBODY** who knows anything about insurance acknowledges that the **Independent Order of Foresters** is far and away the best Fraternal Benefit Society in the world. It was founded in Newark, New Jersey, on the 15th June, 1871, and has spread all over the United States, Canada, Great Britain and Ireland.

The Supreme Court is the supreme legislative body of the Order, and is the final court of appeal in all cases. It is composed of its officers, who are elected at each regular triennial session thereof, and the representatives elected by the High Courts in the various States and Provinces of the United States and Canada, as well as Great Britain and Ireland. Seven of the chief officers of the Supreme Court form the Executive Council, who, in the interim of the Sessions of the Supreme Court, manage the affairs of the Order in accordance with the provisions of its constitution and laws.

The High Courts have control of the Order in each Country, Province or State, and are composed of officers who are elected annually, and the delegates from the Subordinate Courts within their respective territorial jurisdictions.

The Subordinate Courts are located in any healthy locality where a sufficient number of healthy men are found, willing to join hands for mutual protection of themselves and families, and apply for a charter for a Court. It is pre-eminently an Order of the people, by the people, for the people.

Look at the following figures showing the unexampled progress and prosperity of the Order during the last fifteen years:—



	No. of Members.	Surplus.		No. of Members.	Surplus.
Oct., 1882	880	\$1,145 07	Jan., 1890	17,026	\$188,130 86
Jan., 1883	1,134	2,769 58	Jan., 1891	24,466	283,967 29
Jan., 1884	2,216	13,070 85	Jan., 1892	32,393	408,798 15
Jan., 1885	2,558	20,992 30	Jan., 1893	43,024	580,597 85
Jan., 1886	3,618	31,982 52	Jan., 1894	51,484	858,857 89
Jan., 1887	5,804	60,325 02	Jan., 1895	70,055	1,187,225 44
Jan., 1888	7,811	86,102 42	Jan., 1896	86,521	1,760,372 46
Jan., 1889	11,618	117,599 88			

Membership 1st April, 191892: balance in bank 1st May, \$1,686,572 66.  
 The total number of applications considered by the Medical Board for the year ending 31st December, 1895, was 28,956, of whom 25,951 were passed and 3,005 rejected.  
 The Medical Examinations of the Order are unexcelled, as shown by the fact that for 1895, the 22nd year of our existence, our death rate was only 5.68 in 1,000.  
 The cause of this unexampled prosperity and growth of the I.O.F. is due to the fact that its foundations have been laid on a solid financial basis, and every department of the Order has been managed on business principles, thereby securing for all Foresters large and varied benefits at the lowest possible cost consistent with safety and permanence.  
 At date all benefits have been paid within a few days of filing the claim papers, amounting in the aggregate to the princely sum of over three million, five hundred and sixty-nine thousand, three hundred and nine dollars. Notwithstanding the payment of this large sum as well as all the management expenses, including large sums for planting the Order in new territory, there remains the handsome cash balance in the treasury of \$1,686,572 66.  
 Look at this list of the Benefits which you may obtain for yourself by becoming a Forester.

FOR YOURSELF.

- 1.—The fraternal and social privileges of the Order.
2. Free medical attendance, as provided in the Constitutions and Laws.
- 3.—Total and Permanent Disability of \$250, \$500, \$1,000, \$1,500, \$2,000 or \$2,500.
- 4.—Sick Benefits of \$3 to \$5 per week.

FOR YOUR FAMILY.

1. Funeral Benefit, \$50.
  2. Mortuary Benefit of \$500, \$1,000, \$2,000, \$3,000, \$4,000 or \$5,000.
- The cost of admission to the Order in most Courts is only \$7.00 to \$11.00 besides medical examination fee.  
 The monthly assessments necessary to be paid per \$1,000 of insurance ranges from 60 cents at 18 years of age to \$3 at 54 years of age.  
 There are no Assessments on Death.
- Fees Payable by Charter Members. The Charter Members must pay at the institut on of a Court :—
- (1) The Charter Fee ..... \$100 00
  - (2) Each Applicant pays for Certificate of Membership and Policy, ..... 1 00
  - (3) The Registration Fee, which is *fifty cents* for each \$500 of Mortuary Benefit taken.
  - (4) Each one to pay his own Medical Examination Fee.
- The Medical Examination Fee is \$1.50 for \$500 or \$1,000 of Mortuary Benefit, for \$2,000 or \$3,000 the Fee is \$2 00, and for \$4,000 or \$5,000 the Fee is \$3 00.  
 If any of the Charter Members desire to take the Sick and Funeral Benefits, which are optional with each member, they must pay, in addition to the above, an Enrolment Fee of \$1.00 and thereafter the Monthly Assessments which range from *forty cents* and upwards according to age.  
 Members are under the protection of the Order and are *under full benefits* from the moment they pass the Medical Board, pay their fees and are initiated into the Independent Order of Foresters.  
 If Charter Members are entitled to be repaid the full Charter Fee, advanced by them, out of the first initiation fees received by the Court.  
 For any further information apply to Oronhyatekter, M.D., S.C.R., Toronto, Canada; John A. McGillivray, Q.C., M.P., S. Sec., Toronto, Canada; Hon. D. D. Aitken, M.C., S.V.C.R., Flint, Mich., U.S., or to any Deputy of the Supreme Chief Ranger.

## LIST OF SOME LEADING SUMMER HOTELS IN ONTARIO.

Place, Hotel, and Name of Proprietor or Manager.	Accom.	Rates.	
		Per Day.	Per Week.
<b>LAKE ONTARIO.</b> —West and South of Toronto.			
<i>Long Branch</i> —Nine miles west of Toronto. Long Branch Hotel—E. Smily, manager or W. E. Cornell, Toronto.		1.50 to 2.00	8.00 to 12.00
<i>Loxne Park</i> —Fifteen miles west of Toronto. Hotel Louise—C. V. Ward		1.50	8.00 to 10.00
<i>Grimsbury Park</i> . Lake View House—J. D. Strawn		1.50 to 2.00	Rates on Application.
<i>Hamilton</i> . Park House—J. D. Strawn		1.00 to 1.50	Rates on Application.
Royal—Thos. Hood	200	2.50 to 4.00	.....
St. Nicholas—McLean & Smyth	100	2.00	10.50
<i>St. Catharines</i> . Stephenson House—.....		.....	Rates on Application.
<i>Niagara-on-the-Lake</i> . Queen's Royal Hotel—Henry Winnett	250	2.50 to 4.00	.....
Hotel Chautauqua—S. Grigg	75	1.50 to 2.50	7.00 to 12.00
<i>Niagara Falls</i> . Clifton House—G. M. Colburn	600	4.00	.....
Park Side Inn—F. DeLacy and others.		2.00 to 3.00	.....
<b>MIDLAND DISTRICT.</b>			
<i>Sturgeon Point</i> . Sturgeon Point Hotel—W. H. Simpson	150	2.00	8.00 to 12.00
<i>Babcockton</i> . Rockland House—Mrs. Goulais	100	1.00 to 1.50	8.00 to 10.00
<i>Buckhorn</i> —(Halls Bridge P. O.) Buckhorn Hotel—T. Eastwood		1.00	.....
<i>Chemung</i> . Chemung Park Hotel—L. G. Fobert	70	1.0 to 2.00	7.00 to 9.00
<i>Burlough Falls</i> . Burlough House—J. Holmes	15	1.50	5.00
<i>Lakefield</i> . Queen's Hotel—R. J. Munro	25	1.25	6.00 to 8.00
Tremont House—W. Kennedy	25	1.50	8.00
<i>Young's Point</i> . Carleton House—W. McFarlane	30	1.00 & upwids.	7.00
<i>Rice Lake</i> . Idyl-Wild Hunting Lodge—A. B. Spell- man, Hastings.		1.00	6.00
Jubilee Point Hotel—H. Calcult, Peterboro		1.00	5.00
<i>Hastings</i> . Carendon Hotel—A. B. Spellman	50	1.00 to 2.00	Special.
<b>EAST OF TORONTO.</b> —(Lake Ontario, St. Lawrence, etc.)			
<i>Bellerille</i> . Hotel Quinte—Charles P. Hunter	100	2.00 to 3.00	.....
Mass-saga Park Hotel—Jenkins	100	1.50	6.00 to 10.00
<i>Kingston</i> . Hotel Frontenac—Thomas Crate	150	2.00 to 3.00	10.00 to 15.00
British-American—.....	150	2.00 to 3.00	10.00 to
<i>Brockville</i> . Revere House—J. C. Bann	75	2.00 to 2.50	.....
<i>Prescott</i> . Daniels—L. H. Daniels	75	2.00 to 3.00	.....
<i>Ottawa</i> . The Russell—E. X. St. Jacques	450	2.50 to 4.00	.....
Grand Union—H. Alexander	300	2.00	.....
Windsor—Samuel Daniels	200	2.00 to 2.50	.....
<b>LAKE ERIE.</b>			
<i>Port Dover</i> . Commercial—D. Wadde		.....	Rates on Application.
Dominion—J. B. Fick		.....	Rates on Application.
<i>Port Stanley</i> . Fraser House—D. Fraser		.....	Rates on Application.
<i>Kingsville</i> . "The Mettawas"—H. Walker & Sons, Walkerville	150	4.00 to 5.00	21.00 to 28.00

	Place, Hotel, and Name of Proprietor or Manager.	Acrom.	Rates.		
			Per Day.	Per Week.	
<b>Muskoka Lakes.</b>	<b>NORTHERN DISTRICT.</b>				
	<i>Barrie.</i>				
	Queen's Hotel	Alf. Arnall	100	1.50 to 2.00	10.00
	Barrie Hotel	T. Skelsey	60	1.00	.....
	<i>Orillia.</i>				
	Orillia House	James Haw	50	1.50	Rates on Application.
	Daly House	F. J. Daly	.....	1.00 to 1.50	.....
	<i>Big Bay Point—Lake Simcoe, via Barrie.</i>				
	Peninsular Park Hotel	Mrs. Duckworth	.....	2.00	8.00 to 12.00
	<i>Jackson's Point—Lake Simcoe.</i>				
	Lake View House	W. B. Saunders, Stouffville	.....	.....	Rates on Application.
	<i>Strawberry Island—Lake Simcoe, via Orillia</i>				
	Hotel and Cottages	Rennie & Lindsay, Orillia.	.....	.....	Rates on Application.
	<i>Gravenhurst, Ont.</i>				
	Windsor	Wm. McDivitt	75	1.00 to 1.50	7.00
	Albion	F. Wasley	50	1.00	7.00
	<i>Bracebridge, Ont.</i>				
	British Lion	Wm. Sibbett	100	1.00 to 1.50	6.00 to 8.00
	Queen's	J. Higgins	150	1.50 to 2.00	Special.
	<i>Baumaris.</i>				
	Baumaris Hotel	Ed. Prowse	200	1.50 to 2.00	8.00 to 12.00
	<i>Milford Bay.</i>				
	Milford Bay House	R. Stroud	80	1.25	7.00 up'wds.
	<i>Bala.</i>				
	River View House	T. Currie	50	1.25	7.00
	Clifton House	J. Board	100	1.00	6.00
	<i>Mortimer's Point.</i>				
	Wingberry House	Wm. Mortimer	40	1.00	6.00
	<i>Port Carling.</i>				
	Stratton House	J. Fraser	50	1.25 to 1.50	7.00 up'wds.
	<i>Ferndale.</i>				
	Ferndale House	Seymour Penson	80	1.00	6.00
	<i>Windermere.</i>				
	Windermere House	Thos. Aitken	200	1.50	7.00 to 9.00
	Fife House	D. Fife, jr.	75	1.25	7.00
	<i>Cleveland's.</i>				
	Cleveland's Hotel	Mrs. C. J. Minett	70	1.50	6.00 to 7.00
	Paignton House	J. F. Pain	50	1.50	6.00
	Morinus House	W. D. McNaughton	40	1.00	5.00
	<i>Rosseau.</i>				
	Maplehurst Hotel	J. P. Brown	100	2.00	10.00 to 12.00
	Monteith House	J. Monteith	150	1.25	8.00
	<i>Port Sandfield.</i>				
	Prospect House	E. Cox	160	2.00	8.00 to 10.00
	Woodington House	M. Woods	60	1.25	6.00 to 7.00
Hamill's Hotel	Mrs. Hamill	100	1.25	6.00 to 7.00	
Craigie Lea House	Miss Creigh	40	.....	8.50 to 9.00	
Stanley House	C. E. Ayre	75	1.50 to 2.00	8.00 to 12.00	
Gordon House (Gordon Bay P. O.)	A. Winter	75	1.00 to 1.50	6.00 to 8.00	
<i>Port Cockburn.</i>					
Summit House	H. Fraser & Sons	200	1.50 to 2.00	9, 10 & 12.00	
<i>Huntsville.</i>					
Reid House	J. M. Reid	100	1.00 to 2.00	Special.	
Vernon House	John Cook	50	1.00	3.00 to 5.00	
Also private boarding houses at \$4 to \$6 week.					
<i>Burk's Falls.</i>					
Burk House	D. F. Burk	75	1.50 to 2.00	8.00 to 10.00	
<i>Lake Couches—Magnetawan Route.</i>					
Ceebe House	W. A. Cowan	.....	.....	5.00 to 6.00	
<i>Owen Sound.</i>					
Paterson House	W. M. Matthews	.....	1.50 to 2.00	.....	
Sheldon House	F. J. Shipman	.....	1.50	.....	
<i>Collingwood.</i>					
Grand Central Hotel	Thos. Collins	.....	1.50 to 2.00	8.00 to 10.00	
Globe Hotel	John Rowland	.....	1.50 to 2.00	8.00 to 10.00	
<i>Midland.</i>					
Queen's	Wm. Rodgers	50	1.00	4.00	
<i>Penetanguishene.</i>					
The Penetanguishene	Patterson & Paisley	.....	2.00 & up'wds.	10.00 up'wds.	
<i>Parry Sound.</i>					
Belvidere Hotel	Wm. J. Bradley	150	2.00	10.00 to 12.00	
Rose Point Hotel	W. F. Thomson	75	1.50 to 2.00	9.00 to 12.00	

**Excursion Return Fares on the Grand Trunk Railway, Including  
Muskoka Navigation Company and Other Connecting Steamboat  
Lines.**

-- TO --	From Toronto and Hamilton.	Via Hamilton and Barton, via Hamilton and Toronto, or via Georgetown and Barton.		Via Hamilton and Barton. Via Ham- ilton and Toronto, or via Port Dal- housie and Lake.
		From Detroit.	From Pt. Huron.	From Suspension Bridge or Niagara Falls.
All Round Muskoka Lakes	\$7 50	\$14 50	\$12 50	\$8 90
Bala	5 75	13 00	11 00	7 40
Beachgrove	5 50	12 75	10 75	7 20
Beaumaris	5 50	12 75	10 75	7 20
Bracebridge	5 25	12 50	10 50	6 95
Chevelands	6 00	13 25	11 25	7 70
Ferndale	6 00	13 25	11 25	7 70
Gregory	6 00	13 25	11 25	7 70
Hamilton's Point	6 25	13 50	11 50	7 95
Hutton House	5 75	13 00	11 00	7 40
Lake View	5 75	13 00	11 00	7 45
Laurie	6 50	13 75	11 75	8 20
Maplehurst	6 50	13 75	11 75	8 20
Mazenod	6 00	13 25	11 25	7 70
Milford Bay	5 75	13 00	11 00	7 45
Monica	6 50	13 75	11 75	8 20
Mortimer's House	6 00	13 25	11 25	7 70
Mortimer's Point	5 75	13 00	11 00	7 45
Oakland Park	6 00	13 25	11 25	7 70
Point Kaye	5 75	13 00	11 00	7 45
Port Carling	5 75	13 00	11 00	7 45
"    Cockburn	7 00	14 00	12 00	8 40
"    Sandfield	6 00	13 25	11 25	7 70
"    Keewaydin	5 75	13 00	11 00	7 45
Redwood	6 25	13 50	11 50	7 95
Rosseau	6 50	13 75	11 75	8 45
Stanley House	7 00	14 00	12 00	8 70
Torrance	5 75	13 00	11 00	7 45
Wandermere	6 00	13 25	11 25	7 70
Yoho	6 50	13 75	11 75	8 20
Ahmie Harbor	8 90	16 35	14 35	10 75
Port Anson	8 45	15 90	13 90	10 30
Magnetawan	8 20	15 65	13 65	10 05
Bracebridge (Rail)	5 00	12 50	10 50	6 90
Burk's Falls	6 95	14 40	12 40	8 80
Callander	8 90	16 35	14 35	10 75
Collingwood	4 50	12 10	10 25	6 75
Coboconk from Toronto	4 35	14 85	12 35	6 85
Coboconk from Hamilton	6 35			
Emsdale	6 70	14 15	12 15	8 55
Fenelon Falls from Toronto	4 10	15 10	12 60	6 60
Fenelon Falls from Hamilton	6 10			
Gravenhurst (Muskoka Wharf)	4 55	12 00	10 00	6 40
Haliburton from Toronto	6 10	17 10	14 60	8 60
Haliburton from Hamilton	8 10			
Huntsville	5 95	13 40	11 40	7 80
Jackson's Point from Toronto	2 20	12 35	9 85	5 75
Jackson's Point from Hamilton	3 80			
Midland	4 50	12 10	10 25	6 75
North Bay	9 15	16 70	14 70	11 00
Novar	6 35	13 80	11 80	8 20
Orillia to Severn, inclusive	4 10	11 55	9 55	5 95
Penetang	4 50	12 10	10 25	6 75
Powassan	8 40	15 90	13 90	10 30
South River	7 70	15 45	13 45	9 55
Sundridge	7 50	14 95	12 95	9 35
Trout Creek	8 45	15 60	13 60	10 00

**Excursion Return Fares.-(Continued.)**

TO -	From Toronto and Hamilton.	Via Hamilton and Peeton, via Hamilton and Toronto, or via Georgetown and Peeton.		Via Hamilton and Peeton, Via Hamilton and Toronto, or via Port Dalhousie and Lake.	
		From Detroit.	From Pt. Abino.	From Bridge or Niagara Falls.	Suspension Falls.
Utterson	5 55	13 00	11 00	7 40	
Baysville	7 45	14 90	12 90	9 30	
Dorset or Colebridge	7 45	14 90	12 90	9 30	
Dwight	6 95	14 40	12 40	8 80	
Grassmere	6 45	13 90	11 90	8 30	
Hillside	6 45	13 90	11 90	8 30	
Byng Inlet	11 00	17 85	16 20	12 40	
French River	12 00	18 85	17 20	13 40	
do. (Tickets on sale July 1st to Aug. 31st)	10 50	17 35	15 70	11 90	
Parry Sound	9 00	15 85	14 20	10 40	
Parry Sound, going via Muskoka Lakes and returning via Georgian Bay or vice versa (meals extra)	8 00	15 60	13 70	9 90	
<b>FROM HAMILTON</b>					
Sturgeon Point	5 45	14 45	11 95	7 75	
Bobcaygeon, via Lindsay	5 70	14 45	11 95	7 75	
Bobcaygeon, via Chemong	5 85	14 85	12 35	8 20	
Indian Village	5 85	14 85	12 35	8 20	
Oak Orchard	5 85	14 85	12 35	8 20	
Stony Lake	5 90	14 85	12 35	8 20	
Young's Point	5 85	14 85	12 35	8 20	

Correspondingly low rates from all other stations.

**BAGGAGE:** For the Muskoka Lakes should be checked to Muskoka Wharf direct, or through to destination. When checked to Gravenhurst vexatious delays are liable to occur.

For the Soo, Mackinac, Parry Sound, etc., check baggage to steamboat wharf (not the station at Collingwood, Milland, Penetang, etc.)

For Chemong Park, baggage should be checked to Peterboro' Station where bus meets trains for passengers and baggage.

For Toronto, checks may be transferred to officers of Verral Transfer Co., who board all incoming trains, and meet all steamboats.

# Hotel Frontenac

KINGSTON, ONT., CANADA

**OPEN 10th JUNE to 1st OCTOBER**

Close to Steamboat Wharf and Railway Station. Electric Cars pass the door to all parts of the city.

**FISHING** The very best of fishing on the St. Lawrence River is in the immediate vicinity of Kingston. Guests provided with boats, oars-men, etc., on application.

**RATES** will be found as reasonable as at any first-rate Hotel. Special arrangements made with families and parties for the summer season.

For full information, address

**THOS. CRATE, Proprietor.**

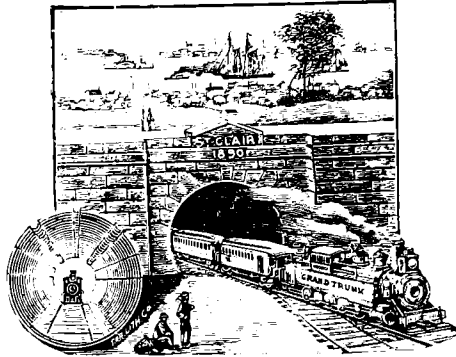
# GRAND TRUNK RAILWAY SYSTEM

The Great International and Double Track Route

REACHING

**ALL  
CANADIAN  
POINTS.**

London  
Hamilton  
Toronto  
Montreal  
Quebec  
Halifax  
Etc.



And in  
United States

Chicago  
and West  
Detroit  
Buffalo  
New York  
Boston  
Portland  
Etc.

THE POPULAR TOURIST LINE.

- TO -

*Niagara Falls*  
*Thousand Islands*  
*Rapids of the St.*  
*Lawrence.*

THE GEORGIAN BAY  
and  
MUSKOKA LAKE REGIONS  
THE  
HIGHLANDS OF ONTARIO.

GULF RESORTS  
SAGUENAY RIVER  
ATLANTIC COAST.

BEST  
SPOTS  
FOR  
FISHING.

Equipped with the  
Finest Day Coaches,  
Pullman and Wagner  
Drawing-Room and  
Sleeping Cars.

BOATING,  
BATHING  
AND  
CAMPING

M. C. DICKSON, District Passenger Agent, Toronto.

CHAS. M. HAYS,  
Gen. Manager,  
MONTREAL.

GEO. B. REEVE,  
Gen. Traffic Mgr.,  
MONTREAL.

W. E. DAVIS,  
Gen. Pass. & Ticket Agt.,  
MONTREAL.

GEO. T. BELL,  
Asst. Gen. Pass. & Ticket Agent,  
MONTREAL.

E. H. HUGHES,  
Asst. Gen. Pass. & Ticket Agent,  
CHICAGO.

PRINCIPAL  
AGENCIES



Full information as to Tickets, Sleeping Car Fares, etc., may be obtained from any agent of the Grand Trunk Railway and its connections. The addresses of District and principal Ticket Agencies of the Grand Trunk Railway Co. only are shown below.

**Alexandria Bay, N.Y.**—Cornwall Bros.

**Berlin, Ont.**—Geo. D. LaCourse.

**Belleville, Ont.**—U. E. Thompson.

**Bowmanville, Ont.**—J. H. H. Jury.

**Boston, Mass.**

T. Wynne, Trav. Pass. Agent, 269 Washington St.

**Buffalo, N.Y.**

J. D. McDonald, City Pass. and Ticket Agt., 177 Washington Street.

**Brantford, Ont.**—L. E. Blackader.

**Brockville, Ont.**—G. T. Fulford.

**Chatham, Ont.**—W. E. Rispin.

**Cincinnati.**—D. S. Wagstaff, Southern

Pass. Agt., 117 Walnut S. east.

**Cobourg, Ont.**—M. A. Hawley.

**Chicago, Ill.**

E. H. Hughes, A.G.P. & T.A., 103 So. Clark Street.

**Detroit, Mich.**

Ben. Fletcher, Trav. Pass. Agent,  
C. C. Craigie, Trav. Pass. Agent,  
81 Woodward Ave.

**Galt, Ont.**—M. N. Todd.

**Guelph, Ont.**—G. A. Oxnard.

**Glasgow, Scotland.**

L. Glen, City Ticket Agent,  
107 St. Vincent Street.

**Hamilton, Ont.**

Charles E. Morgan,  
11 James Street North.

**Kingston, Ont.**—Thos. Hanley.

**Liverpool, Eng.**

European Traffic Agency,  
25 Water Street.

**Lindsay, Ont.**—F. C. Taylor.

**London, Ont.**

C. W. Graves, Trav. Pass. Agt.,  
Edward de la Hooke,  
Cor. Richmond and Dundas Sts.

**London, Eng.**

H. C. Flockton, City Ticket Agent,  
36 & 37 Leadenhall Street.

**Manchester, Eng.**

T. F. Wainwright, City Ticket Agt.,  
2 Pall Mall.

**CHAS. M. HAYS,**  
Gen. Manager,  
MONTREAL.

**GEO. T. BELL,**  
Asst. Gen. Pass. & Ticket Agt.,  
MONTREAL.

**GEO. B. REEVE,**  
Gen. Traffic Man.,  
MONTREAL.

**Montreal, P.Q.**

D. O. Pease, Dist. Passenger Agt.,  
J. Quinlan, Trav. Passenger Agent.

**Montreal, P.Q.**

Bonaventure Station,  
W. D. O'Brien, City Ticket Agent,  
113 St. James Street.

**New York, N.Y.**

F. P. Dwyer, E.P.A. G.T.R.,  
273 Broadway.

**Napance, Ont.**—J. L. Boyes.

**Niagara Falls, N.Y.**

Mrs. L. Barber, I International Block,  
D. Isaacs, Prospect House.

**Niagara Falls, Ont.**

G. M. Colburn, Clifton House.

**Ogdensburg, N.Y.**

J. H. Phillips, Ticket Agent,  
62 Ford Street.

**Orillia, Ont.**—J. W. Ellis.

**Oshawa, Ont.**—R. C. Carter.

**Ottawa, Ont.**

A. H. Taylor, Russell House Block,  
B. Travers.

**Peterboro', Ont.**—J. P. Hurley.

**Petrolia, Ont.**—H. Branton.

**Port Hope, Ont.**—S. Paterson.

**Portland, Me.**—N. J. Grace, Trav.

Pass. Agt., G.T.R. Station.

**Prescott, Ont.**—H. de Rouville.

**Quebec, Que.**

J. Malone, Acting City Ticket Agent,  
5 Du Fort Street and 17 Sous-le-  
Fort Street.

**St. Catharines, Ont.**—A. Christie.

**St. Thomas, Ont.**—S. O. Perry.

**Sarnia, Ont.**—J. S. Saddington.

**Sherbrooke, Que.**—F. Dale.

**Simcoe, Ont.**—D. B. Wallace.

**Toronto, Ont.**

M. C. Dickson, Dist. Pass. Agent,  
Union Station, Toronto.

W. Keating, City Ticket Agent,  
1 King Street West.

**Whitby, Ont.**—E. Stephenson.

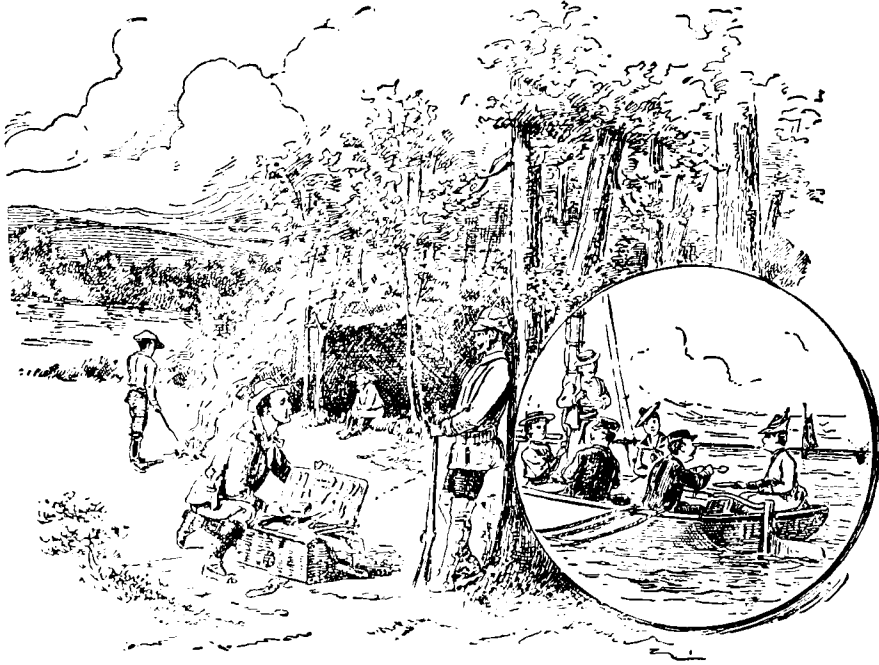
**Windsor, Ont.**—A. M. Stewart.

**Woodstock, Ont.**—J. A. McKenzie.

**W. E. DAVIS,**  
Gen. Pass. & Ticket Agt.,  
MONTREAL.

**E. H. HUGHES,**  
Asst. Gen. Pass. & Ticket Agt.,  
CHICAGO.

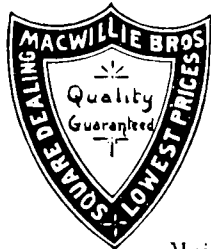
## HEADQUARTERS FOR CAMPING SUPPLIES



# What to Eat Where to Buy

**Our Business:** To supply at uniformly low prices a quality of Teas, Coffees, Imported

Delicacies, Potted Game, etc., not obtainable elsewhere, **carefully packed, shipped express prepaid on all orders of \$10.00 and over (sugar and flour excepted)** to any freight station in Ontario. Secure a copy of our Camper's Guide; we think it will suggest the possibility of a saving of very considerable amount in your summer purchases, and thus escape the exorbitant prices usually charged in country districts for such supplies.



## MacWillie Bros.

Importing Grocers

Confederation Life Building

Cor. Yonge and Richmond Sts.

Phone 326

**Toronto**

Mail or Telephone orders have prompt attention.



Most Suitable  
... FOOD for **CAMPERS' and COTTAGERS' USE**

Put up in Convenient Air-Tight Packages.

EASILY PREPARED

# . FARINOSA .

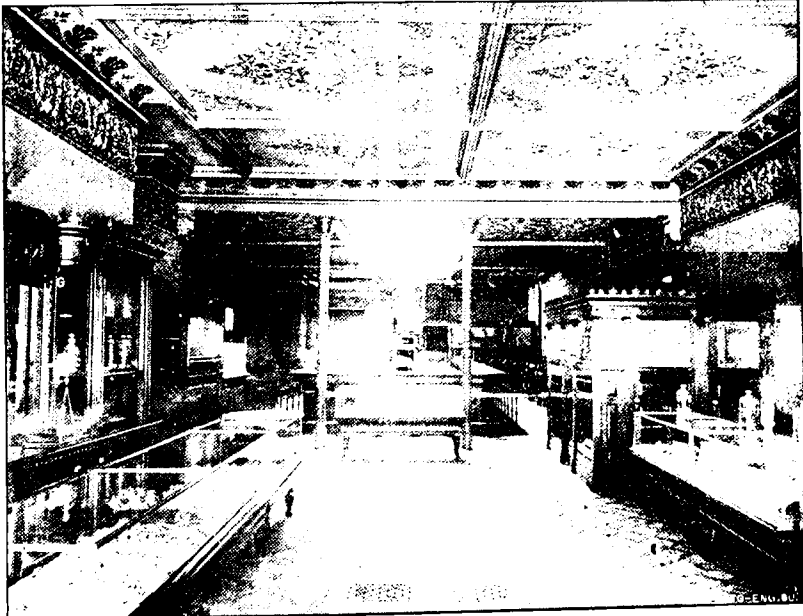
**BREAKFAST FOOD** for Porridge, Puddings, Gems, etc.

**SOLD ONLY IN PACKAGES BY ALL GROCERS**

... Manufactured by ...

**THE IRELAND NATIONAL FOOD CO., Toronto, Canada.**

**The NASMITH COMPANY, Ltd., Toronto,** Bakers, Confectioners, Lunch  
Counters, Restaurants, etc.  
Factory and Office, cor. Jarvis and Adelaide Sts.; Candy Factory, 28<sup>1</sup>/<sub>2</sub> Colborne St.



Lunch Counters, etc., 51 King E., 51 King W., 152 Yonge, 68 Jarvis, 28<sup>1</sup>/<sub>2</sub> Colborne.

# Great Northern Transit Co. Ltd.

ROYAL MAIL STEAMERS (Lighted Throughout by Electricity). Running in Close Connection with the G.T.R. and C.P.R. Companies.

S. S. "MAJESTIC" (New 1895), S. S. "ATLANTIC,"  
S. S. "PACIFIC," S. S. "NORTHERN BELLE."

## COLLINGWOOD and SOO LINE

Steamers "Atlantic," "Majestic" (new) and "Pacific," leave Collingwood **every Monday, Thursday and Saturday**, respectively, for Sault Ste. Marie and all intermediate ports on Georgian Bay, and Str. "Northern Belle" **every Tuesday and Friday** for Parry Sound and Killarney.

## EXCURSIONS TO MACKINAC

"The Gem of the Great Lakes," through the 30,000 Islands of the Georgian Bay, during July and August, by Steamers "Majestic" and "Pacific." The most delightful trip on fresh water.

For tickets and full information apply to any Railway Agent, or to

**CHAS. CAMERON,**  
*Gen'l. Manager, Collingwood.*

TAKE THE

*North Shore Navigation Company's*

.....Steamers.....

FOR

**SAULT STE. MARIE, MACKINAC ISLAND,  
FRENCH RIVER or PARRY SOUND**

♦ ♦ ♦ ♦

**City of Collingwood** and **City of Midland** will leave **Collingwood** at 1.30 p.m. and **Owen Sound** at 11.45 p.m., every Tuesday and Friday, for all ports to the **Soo** and **Mackinac**.

**City of Parry Sound** will leave **Collingwood** at 1.30 p.m. every Monday and Thursday for **Parry Sound, Byng Inlet, French River** and **Killarney**, connecting there with the **Soo** boats.

**City of Toronto** leaves **Penetang** at 11.30 a.m. (and during July and August at 1.00 p.m. after arrival of train), and from **Midland** at 2.00 p.m. daily (Sundays excepted) for **Sans Souci, Rose Point** and **Parry Sound**, making connections there with Rail and Stage for **Muskoka Lakes**, and on Mondays and Thursdays with **City of Parry Sound**.

Full information, tickets and folders can be obtained from all G.T.R. and C.P.R. Agents, or by applying to **MATTLAND & RIXON**, Agents, Owen Sound, or

**M. BURTON,** *Manager, Collingwood.*

---

**Muskoka Lakes : Hotel, Boarding House and Cottage Directory.**

---

**ERNSCLIFFE, LAKE ROSSEAU.**

This Popular Boarding House is situated on a jutting promontory of land on LAKE ROSSEAU, within five miles of Rosseau Village.  
GOOD SUBSTANTIAL FARM BOARD.

FIRST CLASS FISHING AND BOATING.  
Pretty walks in vicinity, notably, along shore line to Snow's; splendid view of lake and islands.

Accommodation for 30 Guests. Post Office and Daily Mail.  
TERMS - \$1.00 PER DAY.

**ALFRED JUDD, Proprietor,**  
Judhaven P.O., Muskoka, Ont.

---

**MORINUS HOUSE, LAKE ROSSEAU.**

Open June 15th. Season 1896.

Good Fishing. Safe Bathing Beach. Good Deer Hunting in the Fall. Deer Leap Cliff and other points of interest in vicinity of hotel.  
Daily Boat and Mail. Post Office on the Premises. Terms Moderate.  
For Rates at this Hotel apply to

**W. D. McNAUGHTON,**  
Minett P.O., Muskoka, Ont.

---

**Rostrevor, Lake Rosseau.**

Comfortable Cottages to Rent. Room for a Few Boarders During Season. Finest Bathing Beach on the Lake.

Terms Moderate. Apply to **ARTHUR DINSMORE,**  
Windermere P.O., Muskoka, Ont.

---

**EDGEWOOD HOUSE, LAKE JOSEPH.**

Near Port Sandfield.

ACCOMMODATION FOR 12 BOARDERS. For Terms Apply to  
**THOS. JAMES,** Port Sandfield P.O., Muskoka, Ont.

---

**REDWOOD, LAKE JOSEPH.**

Two Cottages to Rent near Dr. Stowe's Island. Steamboat Wharf on Property.  
Daily Boat. For Terms Apply to

**WRIGHT COLE,** Redwood P.O., Muskoka, Ont.

THREE PRETTY COTTAGES TO RENT (Furnished) at Rosseau. Apply to **HENRY DITCHBURN,** Rosseau, Muskoka. See Full Page Advertisement.

---

**COTTAGES TO RENT ELSEWHERE.**

Foresters' Island Park, Bay of Quinte. Apply to **DR. ORONHYATEKHA,** Toronto.

**STONY LAKE.**—Apply to **GRAHAM & SON,** Lakefield, Ont.

---

**BRITISH LION HOTEL**  
**Bracebridge, Ont.**

This Hotel is built on an eminence commanding a fine view of Muskoka River and Falls. A few minutes walk from M.N. Co.'s Steamboat Wharf. Bus meets Trains and Boats.

RATES : \$1.00 to \$1.50 per day ; \$6.00 to \$8.00 per week.

**W. SIBBETT, Proprietor.**

---

**SUMMER SEASON, 1896**

---

# =Stratton House Hotel=

**Port Carling, Muskoka Lakes,**

**CANADA**

**T**HIS comfortable Family Hotel is delightfully situated. The most central and convenient stopping place on the chain of Lakes, as visitors can get to any point and return the same day. The scenery is beautiful, air pure and invigorating. Those suffering from Hay Fever get immediate relief.

Table liberally supplied with fresh meat, fresh milk, vegetables, fruit, etc.

The Bed Rooms are comfortable and airy. Spring Beds.

Good Tennis Court. Suitable Bathing Beach for Ladies and Children near at hand.

A well-equipped Library and Reading Room, with Daily Papers in close proximity to the House.

A superior class of Boats on hand at moderate rates.

Parties leaving Toronto and Hamilton in the morning arrive here about 4 p.m. Luggage checked direct.

Terms—**\$1.25** and **\$1.50** per day. A reduction to parties and families by the week.

**JOHN FRASER, Proprietor.**

---

**ESTABLISHED 1879.**

# CLEVELANDS HOUSE

**Lake Rosseau, Muskoka.**

First-Class Boating, Bathing and Fishing. Every attention paid to the comfort of guests. First-Class Table. Good Lawn Tennis and

Baseball Grounds. Daily Steamers and Excursion Boats.

Accommodation for 75 Guests.

---

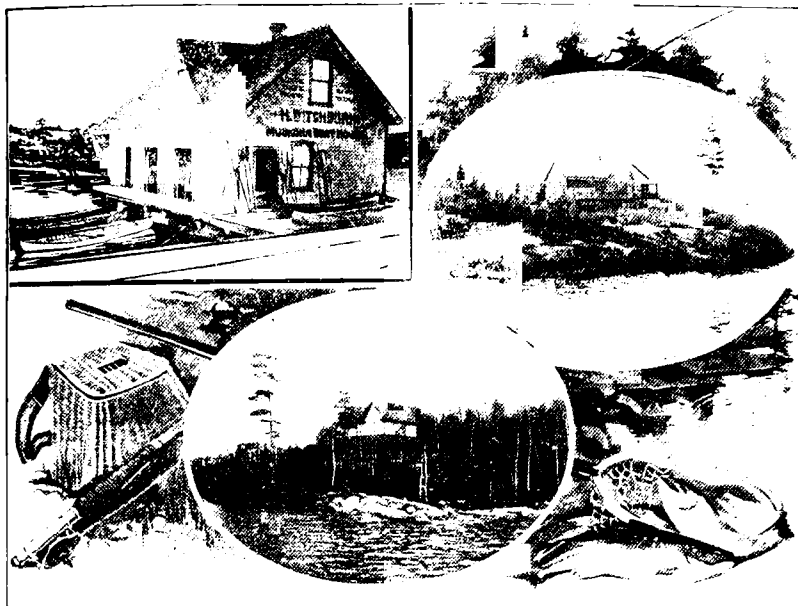
**RATES - \$1.00 to \$1.25 PER DAY.**

---

The house is about to be enlarged by the addition of a ball room and by increasing the accommodation to a capacity for 150 guests.

**Address MRS. F. MINETT, Proprs.,**

**Minett P.O., Muskoka, Ont.**



*Muskoka Riv. Wharf  
Boat House.*

*Invermay Summer  
Cottage.*

*Bay Point Summer  
Cottage.*

## H. DITCHBURN

PROPRIETOR OF

### . . Boats, Tents, Yachts, Canoes and Summer Cottages . .

Has on hand for hire a good stock at the above Boat House ready for shipment up the lakes on arrival of train, and is well supplied at his Boat Houses, *Port Carling, Windermere, Maplehurst* and *Rosseau*, also at the *Penclungrihuc Hotel, Georgian Bay*. Boats and Canoes kept on view for sale, also Oars, Paddles and general boating supplies. Boats built to order or put in repair, also stored for the winter at owner's risk. Address any orders by letter to.

#### H. DITCHBURN,

*Rosseau P.O., Muskoka.*

**COTTAGES FOR RENT**—"The Pines," comprising Dining Room, Sitting Room, Kitchen and five Bedrooms. Rent for season, \$100.

"**Invermay**," same size and rent as "The Pines."

"**Bay Point**," Sitting Room, Kitchen and five Bedrooms, \$60.

These cottages are situated at the Head of Lake Rosseau, within easy distance of the pretty village of that name, they are furnished throughout with everything necessary except bed and table linen. Families and parties desiring the romantic seclusion of cottage life in this charming locality will consult their interests and convenience by applying for further information to

#### H. DITCHBURN,

*Rosseau P.O., Muskoka.*

---

**Muskoka Lakes—Miscellaneous Directory.**


---

1874 ESTABLISHED 1874.

**RIVER VIEW ESTABLISHMENT.**

JOSEPH S. WALLIS, Port Carling, Muskoka.

General Merchant, Lumber, Shingles, Planing, Matching. Dealer in Real Estate.  
Cottages to Rent.

Commissioner for Taking Affidavits in H.C.J.

**ERNEST PENSON—GUIDE**

For Moon and Musquosh Rivers, Crane and Blackstone Lakes and Georgian Bay.

COTTAGE TO RENT AT FERNDALE.

P.O. Address Port Carling, Ont.

**JOSEPH RIVER SAW AND PLANING MILL.**Pine, Hemlock and Hardwood Lumber, Dressed or Rough, in Stock or Cut and  
Dressed to Order. BUILDING CONTRACTS TAKEN.

Correspondence Solicited from Intending Builders, Jobbing and Contractors.

CHAS. AMES, Gregory P.O., Lake Rosseau, Muskoka, Ont.

**SUPPLIES JOHN MONTEITH, MONTEITH HOUSE.**  
Rosseau Supply Boat.Chickens and all kinds of Meat, Fish and Game in Season. Wines and Liquors.  
Bottled Ales a Specialty.**W. HANNA & CO.**

Headquarters for

***TOURISTS' and CAMPERS' SUPPLIES***

DEALERS IN

Groceries, Dry Goods, Crockery, Flour and Feed, Hardware, Boots  
and Shoes, Stoves, Tinware, Etc.#1 COTTAGERS, CAMPERS AND VISITORS SUPPLIED DIRECT BY our  
Supply Boat "Mink," calling at all Cottages, Camps and Hotels on Lakes  
Rosseau and Joseph with complete stock of Groceries, Provisions, Etc.#2 Save Freight and Extra Baggage by Purchasing Supplies from Supply Boat of  
HANNA & Co., or at **Port Carling**, the Central Distributing Point of the  
Muskoka Lakes.**LITTLE HARRY, Orillia****CANDY PALACE AND ICE CREAM PARLOR.**Choice Candies and Confectionery Manufactured on the Premises. All Latest  
Improved Machinery used.SPECIALTIES: Supplies to Excursion Boats and Summer Resorts, Picnic and Excur-  
sion Parties. Our famous COUGH DROPS used throughout Ontario.**L. H. PETHICK, Orillia, Ont.**

**DR. A. P. CORNELL,**

The Corner Book and Drug Store, GRAVENHURST.

—: A FULL SUPPLY OF: —

Pure Drugs, Medicines, Perfumes, Fancy Goods, Etc. The Latest Novels and Periodicals, Books and Stationery.

COMPLETE STOCK OF FISHING TACKLE. — One of the Largest Stocks of Fishing Tackle Carried in Ontario.

Careful and personal attention paid to all orders. Telephone connection with Muskoka Wharf. Opposite Albion Hotel.

**THE WINDSOR HOTEL GRAVENHURST.**

Leading Commercial and Tourist Hotel.

Splendid Fishing and Hunting Grounds Near Hotel. Available to Guests. Accommodation for 75 guests. TERMS \$1.00 to \$1.50 per day; \$7.00 per week. WM. McDIVITT, Proprietor.

**ALBION HOTEL GRAVENHURST, ONT.**

Largest Hotel and Best Accommodation in the District.

SPECIAL ATTENTION PAID TO THE TOURIST TRADE.

Only First-Class Brands of Liquors and Cigars kept in Stock.

RATES ONE DOLLAR PER DAY, \$4.00 TO \$5.00 PER WEEK. Accommodation— 50 Guests.

F. WASLEY, Proprietor.

**H. R. KING, Butcher, Gravenhurst.**

TOURISTS CAMPS AND COTTAGES. Supplied with Fresh Meats during the Season. Goods Shipped by the M.N. Co.'s Boats. Freight Prepaid.

**HUNTING PARTIES** Provisioned for the entire hunting season. Accurate and reliable information supplied as to best localities for Deer, Bear and all kinds of Game. Mail Orders Promptly Attended to.

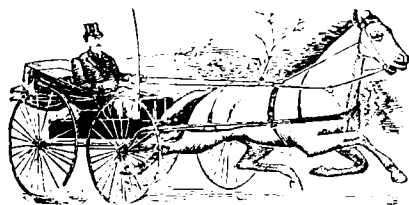
Telephone Communication with Muskoka Wharf. PHONE NO. 27. Contractor for Supplies for M. N. Co.'s Boats.

**If You Come To Muskoka For Rest - -**

Don't Load Your BAGGAGE Down with Merchandise. You can buy nearly everything you want in GRAVENHURST Try purchasing HARDWARE from

**J. F. YOUNG.**

We make the Term HARDWARE as comprehensive as possible and include FISHING TACKLE, PAINTS, STEAM FITTINGS, FUEL OIL STOVES AND TINWARE AND AMMUNITION.



Established Over 25 Years.

**J. D. BROWN**

Manufacturer of BELFAST GINGER ALE

And all kinds of Carbonated Beverages. All goods made from Pure Spring Water at an elevation of 300 feet above Lake Muskoka.

WHOLESALE AND RETAIL

Campers and Cottagers Supplied Direct by M. N. Co.'s Boats.

Mail Orders Receive Prompt Attention.

**BOX 55 GRAVENHURST.** TELEPHONE No. 24.

Livery in Connection. Union Bus Meets all Trains and Boats, Baggage Transferred.

**J. E. CLIPSHAM, Gravenhurst, Ont.**

MANUFACTURER OF—

**Buggies, Buckboards, Waggon, Democarts, Runabouts, Carts, Cutters and Sleighs of all Kinds.**

DEALER IN

Pianos, Organs, Sewing Machines, Reapers, Mowers, Horse Rakes, Ploughs, Harrows, Hay Forks. **Tourists** Wheelbarrows kept in stock.

Organs Rented for the Season. Stopped Direct to Camp and Cottage by M. N. Co.'s Steamers.

**J. SKITCH, Merchant Tailor, Opposite Windsor Hotel, GRAVENHURST.**Dealer in Gents' Furnishings, English and Scotch Tweeds and Suitings a Specialty. An Excellent Fit, Good Work and Best Trimmings Guaranteed. Full supply of **Tourists** Outfits, Dry Goods, Ordered Clothing, Boots and Shoes. Orders by Mail Promptly Attended to. Telephone communication with Muskoka Wharf. All goods delivered to boats free of charge. TELEPHONE No. 31**GRAVENHURST. BOX 69.**

John's Agency for Houses, Boarding Etc.; Reading Room.

**TOURIST. PHOTOGRAPHY COMMERCIAL.  
BARKE & GRAY**

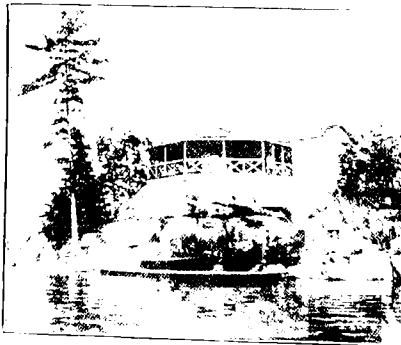
High Class Photos—Flash Lights of Parlors, Balls and Parties. Crayons, Bromide Enlargements, Water Colors, India Ink, Etc. Trade Work a Specialty. Prices Moderate and Satisfaction Guaranteed.

Studio at GRAVENHURST and at

HEADQUARTERS—561 Queen Street West Toronto.

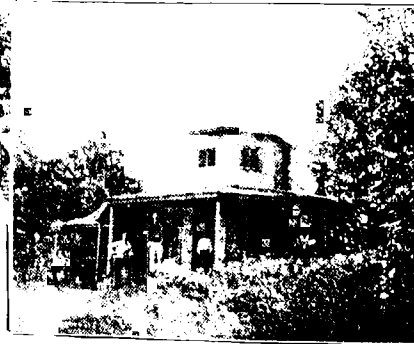
J. E. BARKE.

A. A. GRAY.

*Cottages on Stony Lake, Lakefield, Ont.*

*"Elsinore," Stony Lake,  
Dr. Bell, Lakefield.*

*Serenity Hall, Stony Lake,  
(Clarence Bell).*





---

Lakefield Resorts and Business Directory.

---

## Tremont Summer Hotel.

LAKEFIELD, ONT.

This commodious Summer Hotel is picturesquely situated in a pine grove, bordering on Katchawanooka Lake. The house is of red brick, with spacious verandahs, and contains large airy bedrooms, waiting rooms, bath rooms and modern conveniences.

Good table and bar.

**Daily Connection** by Boat with the Beautiful **Midland Lakes**. Daily Mail, and Telephone Connection. Steamboat Wharf in Grounds.

**FIRST-CLASS FISHING, BOATING AND BATHING.**

Frequent Train Service to all centres by G.T.R. One minute walk from railway depot. Porters meet trains and boats. Rates: \$1.50 per day, \$8.00 per week.

**W. KENNEALY, Lakefield P.O., Ont.**

---

## QUEEN'S HOTEL

LAKEFIELD, ONT., Near the Otonabee River.

The Best Commercial and Tourist Hotel in Town.

Tourists should take the Bus to the QUEEN'S HOTEL when visiting Lakefield.

**FIRST-CLASS TABLE AND BAR.**

Excellent Boating, Bathing and Fishing. Telephone Connection and Modern Conveniences.

**R. J. MUNRO, Proprietor.**

---

## TOURIST SUPPLIES.

T. Z. WEBSTER, Lakefield, Ont.

**BAKER AND CONFECTIONER.**

Cottagers and Campers at any Point on the Lakes Supplied Daily with BREAD, CONFECTIONERY and GROCERIES, FRUIT, OYSTERS, Etc.

Mail Orders Promptly Attended to.

---

## COTTAGE AND CAMP FURNITURE.

W. McDONALD, Lakefield, Ont.

Manufacturer and Dealer in all kinds of CAMP AND COTTAGE FURNITURE. Camps Supplied with Outfits. Cottages Furnished Throughout.

---

## COTTAGES TO RENT.

Islands and Points for Rent or Sale. W. M. GRAHAM, Lakefield, Ont.



283 and 283 1/2 GEORGE ST., PETERBOROUGH, ONT., CANADA.

Telephone 180 Day or Night. Tents and Camping Goods to Rent.



# Galvanized Steel - Windmills.

INTERNAL COVERED GEAR.

Patent Roller and Ball Bearings.

## Galvanized Towers and Wheels

The Best in America.

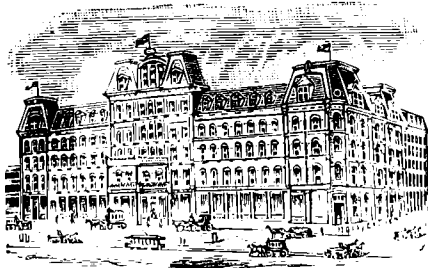
IDEAL SPRAY PUMP, IRON PUMPS,  
WATER-TANKS, PIPING, ETC.

The Ideal Power Mill with Roller and Ball  
Bearings, is a Wonder.

SEND FOR CIRCULARS. . . . .



BRANTFORD CAN.



THE . . . .  
**RUSSELL HOUSE**

OTTAWA'S  
PRINCIPAL HOTEL.

Headquarters of Members of Parliament and leading public men.  
This new palatial hotel is fitted up in the most modern style and has  
Passenger and Baggage Elevators, and complete system of fire escapes.  
Splendid view of City, Parliamentary Grounds, River and Canal.

**GRAND UNION HOTEL**

OTTAWA, - - - ONTARIO.

Opposite City Hall Square, one block from Parliament Buildings, near  
Post Office and Opera House. Electric Cars pass every few minutes  
going to all parts of the City, and making direct connections  
with the Railway Stations. Twenty-eight finest Sample  
Rooms in Dominion of Canada.

*Passenger and Baggage Elevators to each Department. Accommodation  
for 300 guests.*

**H. ALEXANDER, Proprietor.**

**The Windsor, OTTAWA, CAN.**



IS MOST  
CENTRALLY  
LOCATED

Within one block  
of Parliament  
Buildings,  
Post Office and  
Grand Opera  
House.

Is At in all its ap-  
pointments, being  
recently provided  
with the latest im-  
proved Safety Electric Elevator.  
Electric Cars pass the Hotel to all  
parts of the City and Railway  
Stations.

Have been specially favored with Tourists'  
patronage. Accommodation for 200 guests.  
Sample Rooms second to none for Commercial

Travellers. Cuisine unexcelled. **TERMS: \$2.00 and \$2.50 PER DAY.**

## INDEX TO CONTENTS.

<i>Toronto :</i>	PAGE	<i>Oshawa :</i>	PAGE
Summer Excursion Lines and Rates .....	1	Prospect Park .....	57 - 59
Fish and Game Laws, etc. ....	1	<i>Ottawa</i> .....	59 - 61
Introductory .....	5	<i>River St. Lawrence, Thousand Islands, Quebec and Saguenay</i> .....	61 - 64
Parks and Summer Resorts .....	6 - 8	<i>Foresters' Island Park</i> .....	64 - 65
Climate .....	9	<i>Quebec to the Maritime Provinces</i> .....	66
Street Railway System .....	9 - 12	<i>Halifax Summer Carnival</i> .....	66
Commerce and Education .....	13	<i>Resorts on Lakes Ontario, Erie and Huron :</i>	67
Hospitals and Sanatoriums .....	14 - 17	Spencer, Hereward & Co., Toronto, (Teas, Coffees, etc.) .....	67
Queen's Royal (Niagara-on-the-Lake) .....	17 - 19	Independent Order of Foresters (Assessment System) .....	68 - 69
Hotels, Boarding-Houses and Restaurants .....	19 - 20	Summer Hotels in Ontario .....	70 - 71
Places of Interest .....	20	Excursion Rates, (G.T.R., M.N. Co., etc.) .....	72 - 73
<i>Midland Lakes of Ontario :</i>		Hotel Frontenac, Kingston .....	73
Peterborough and Midland Resorts .....	21 - 22	Grand Trunk Railway and Principal Agencies .....	74 - 75
Chemong Park .....	22 - 23	Camping Supplies (MacWillie Bros., Toronto) .....	76
Lakefield .....	23 - 25	Food Preparations (The Ireland National Food Co., Toronto) .....	77
Stony Lake .....	25 - 29	Restaurants (The Nasmith Co., Toronto) .....	77
Other Resorts .....	29	Georgian Bay Steamship Lines (G.N.T. Co., N.S.N. Co., Collingwood) .....	78
<i>Georgian Bay Route :</i>		Muskoka Lakes, etc.: Hotels, Boarding Houses and Cottages .....	79 - 81
Collingwood .....	30 - 31	Muskoka Lakes: Supplies, etc. Gravenhurst Business Directory .....	83 - 84
Resorts on Georgian Bay .....	31 - 34	Lakefield Cottages .....	84
Mackinac .....	35	Lakefield Hotels and Supplies .....	85
<i>Northern Lakes of Ontario :</i>		Tents, Camping Goods, etc., (J. J. Turner & Sons, Peterboro') .....	86
Penetanguishene Hotel .....	36 - 37	Wind Mills (The Goold, Shapley & Muir Co., (Ltd.) Brantford) .....	86
Parry Sound Route .....	37 - 38	Ottawa Hotels .....	87
Rose Point .....	38 - 41		
Belvidere Hotel .....	41 - 44		
Parry Sound .....	44		
Round Trip Parry Sound and Muskoka Lakes .....	45		
Gravenhurst .....	46 - 47		
Muskoka Lakes .....	47 - 51		
Beaumaris, (Muskoka Lakes) .....	51		
Port Carling, " " .....	51 - 52		
Port Sandfield, " " .....	53 - 54		
Gordon Bay, " " .....	55		
Gordon House .....	55		
Other Muskoka Resorts .....	56		
Resorts on the N. & N.W. Div. G.T.R. ....	56		