



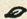
A Souvenir of Brockville

The Beautiful City of The Thousand Islands

GIVING A FEW FACTS ABOUT THE MOST BEAUTI-
FULLY LOCATED MUNICIPALITY ON THE
WORLD FAMED ST. LAWRENCE
RIVER=====



An Ideal Summer Resort :: A Perfect Winter Home

Published by ROBERT WRIGHT & CO., Proprietors of Brockville's Great Department Store
Engraved and Printed by THE JAMES BAYNE COMPANY, Grand Rapids, Michigan, U. S. A. 

Brockville



Nestles at the foot of the far-famed Thousand Islands, and only a few miles above the not less famous Rapids of the River St. Lawrence. It has a location which for beauty and picturesqueness is not excelled anywhere on the Continent of America. The original settlers were chiefly U. E. Loyalists, who came across the river into British territory after the War of Independence during the closing years of the eighteenth century, and hewed out for themselves new homes in the then unbroken wilderness. The population of Brockville is now 9,000, and it has the merited reputation of being one of the most up-to-date towns in Canada. The solidity that characterizes its commercial interests is evidenced in the substantial blocks of brick and stone, on the business streets, and the many handsome residences testify to the comfortable financial circumstances of its people. The Grand Trunk, Canadian Pacific and Brockville, Westport & Sault Ste. Marie Railways, and the many lines of steamers on the river afford unexcelled facilities for tourists, while the numerous boats plying up and down the St. Lawrence during the season of navigation afford abundant opportunities for pleasure. The town owns an excellent system of water works, also gas and electric plants. The streets are wide and well made, while the sidewalks are granolithic pavement, clean and well kept. It has up-to-date hotels affording every comfort to the traveling public. The river shore above the town is lined with beautiful summer cottages for a distance of seven miles, taking in the pretty summer resorts of Fair Haven, Hill Crest, Fernbank, Pine Hurst and Union Park. The steamer "Brockville" makes hourly trips between the above points and the town, affording great convenience to cottagers. Besides the natural beauties which make Brockville a famous summer resort, the town is an ideal location for manufacturers. The railways mentioned above as well as numerous steamboat companies affording the best shipping facilities, while the New York Central Railroad is reached by car ferry across the river. Among Brockville's leading manufacturing interests are The James Smart Mfg. Co., the Ontario Glove Works, the Canada Carriage Co., the Union Hat Works and the Cossitt Agricultural Implement Works. The town is well protected against fire, having one of the best fire-alarm systems in Ontario.



Regatta Day at Brockville.



St. Lawrence River Skiff Sailing Race.

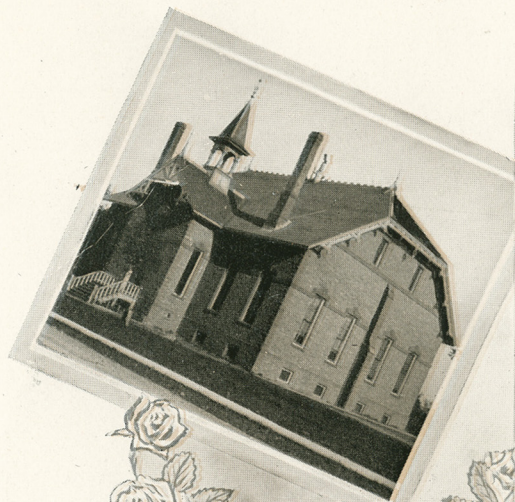


Looking towards River from Court House.



Main or King Streets, Looking West.

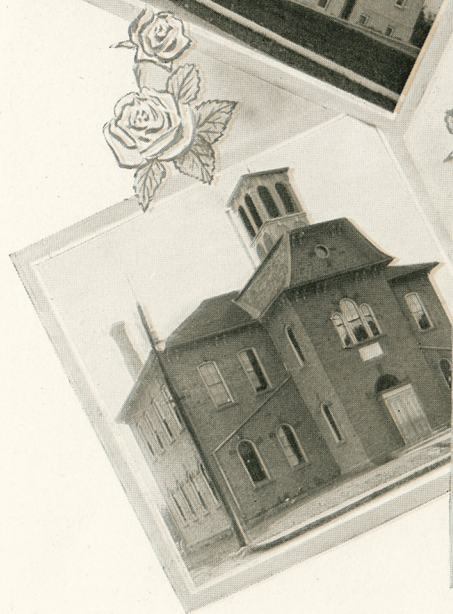
East Ward School.



Separate School.



Horton School.



West Ward School.



Victoria School.



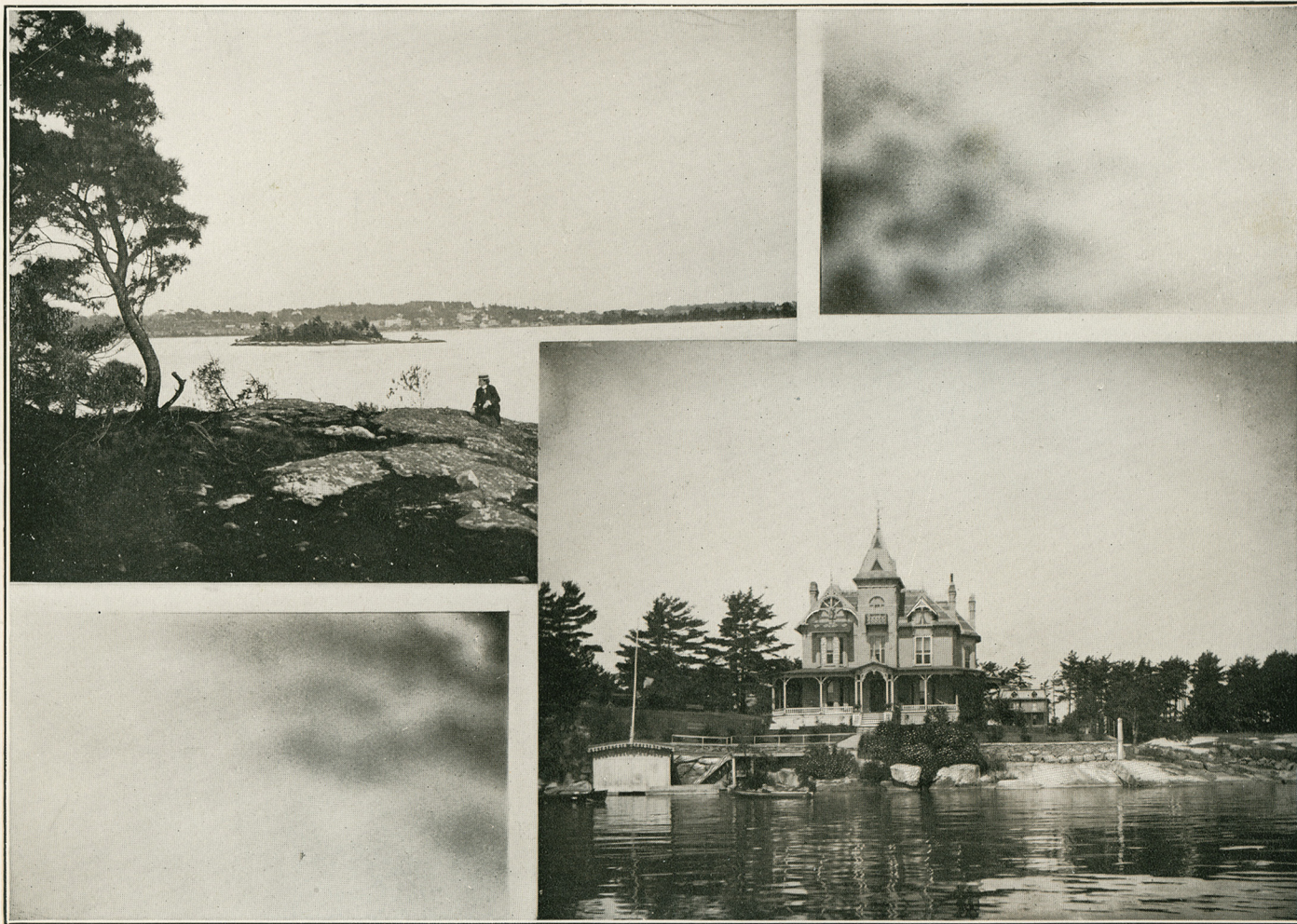
New West Ward School



A Lady Angler's Successful Catch at Brockville. Eighty pounds of Maskinonge.

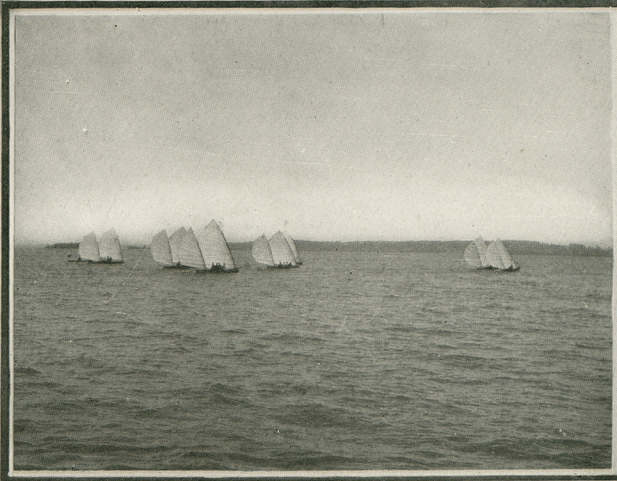


An afternoon catch at the Maskinonge Fishing Grounds, two miles above Brockville—Weight of these fish 30 pounds each.



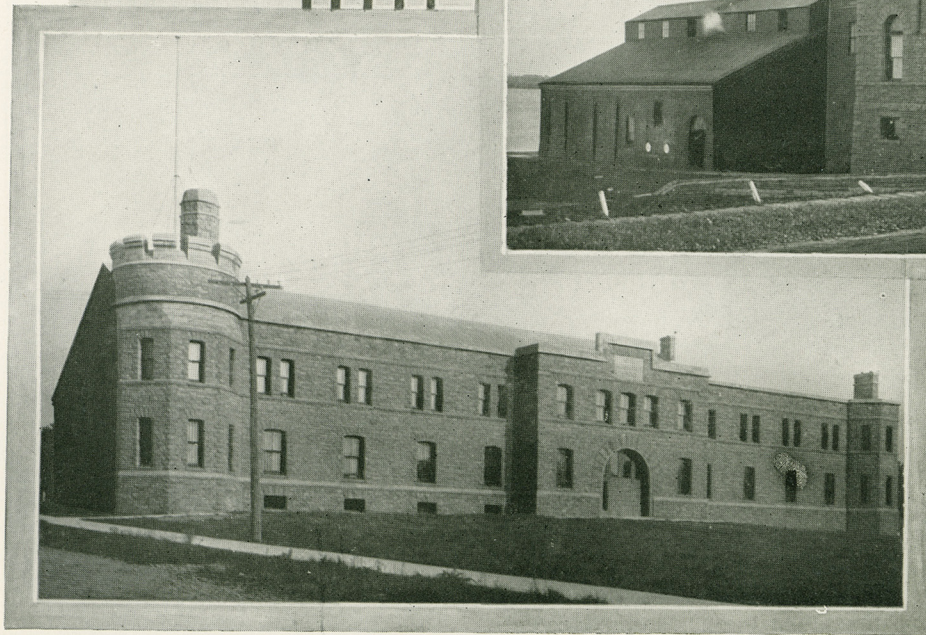
The Sister Islands, between Brockville, Ont.,
and Morristown, N. Y.

Residence of R. A. McLelland.



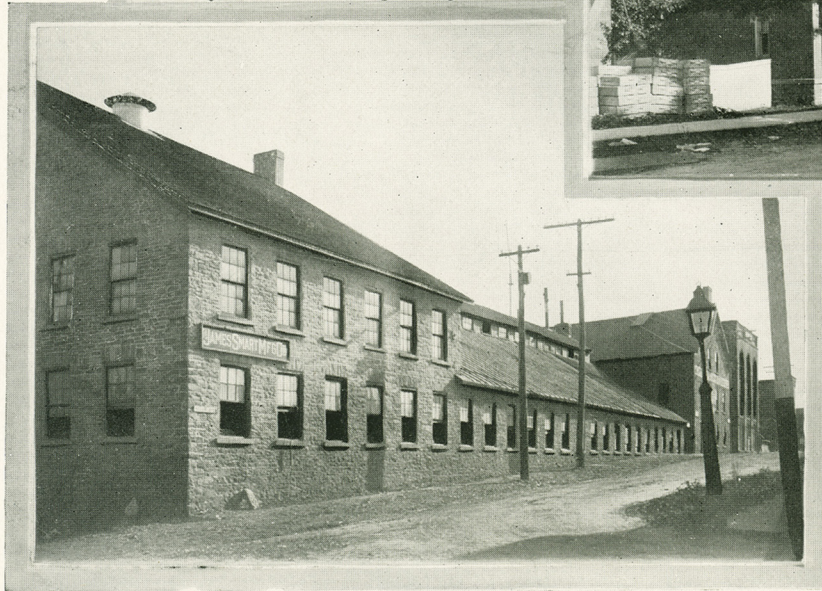
Boating and Bathing near Brockville.

Waterworks Pumping Station.



The Armories.

Ontario Glove Works of Brockville.



The James Smart Manufacturing Company.



Landing a Black Bass, near Brockville.



Gathering Lilies near Brockville.

Hospital for the Insane—Main Building.



Brockville General Hospital.

St. Vincent DePaul Hospital.

Postoffice.



The Town Hall.



Court House.

Brockville Hat Works.

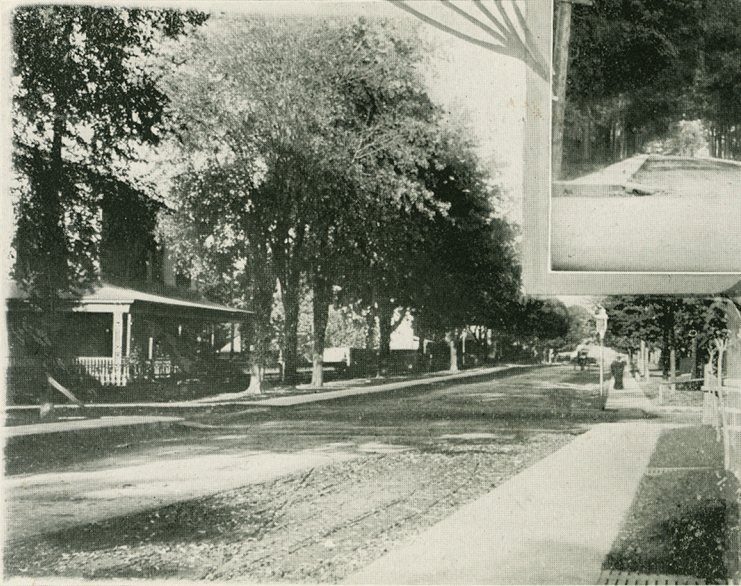


The Canada Carriage Company.



Fair Day at Brockville.

Bethune Street.



James Street.

The Willows—Just West of Town



St. Lawrence Park—"The Picnic Place."

Trinity Church.

St. Francis Xavier R. C. Church.



George Street Methodist Church.

First Presbyterian Church.

Wall Street Methodist Church.

Baptist Church.



St. Peter's Episcopal Church.

The "Kirk", St. John's Presbyterian.

St. Paul's Episcopal Church.



Entrance to Lily Bay.

Oriental Island.

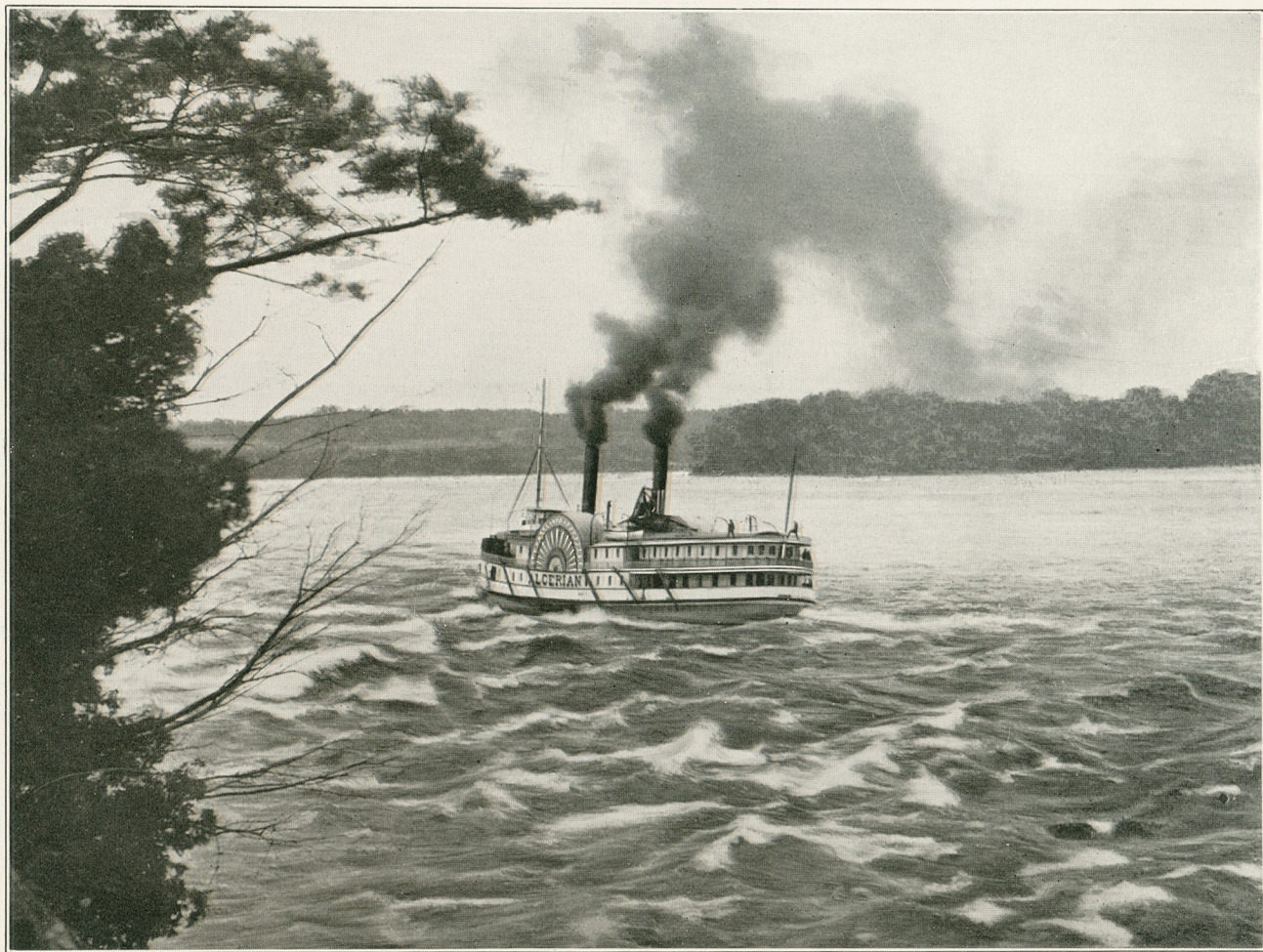


A Picnic Dinner.

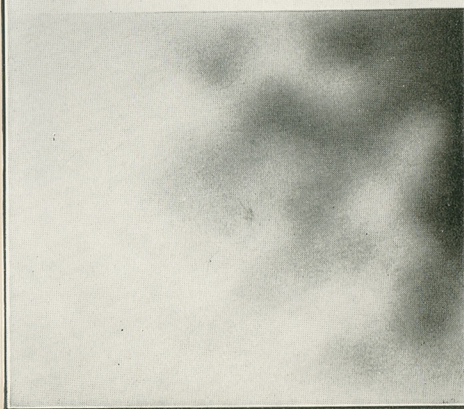
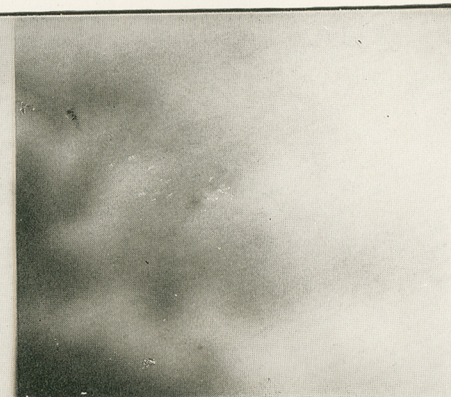
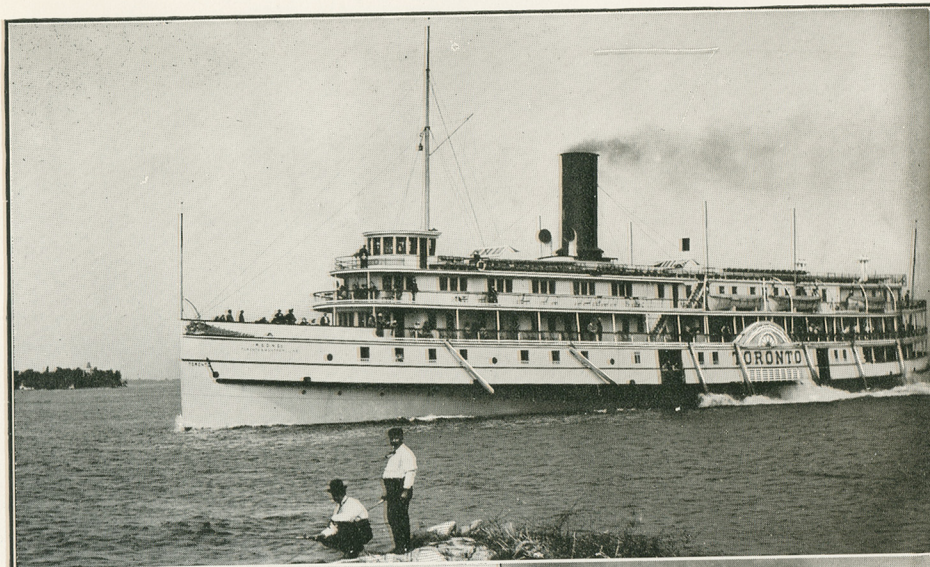


Swift Water Point.

JOS. BRYNE
GR. MEN.



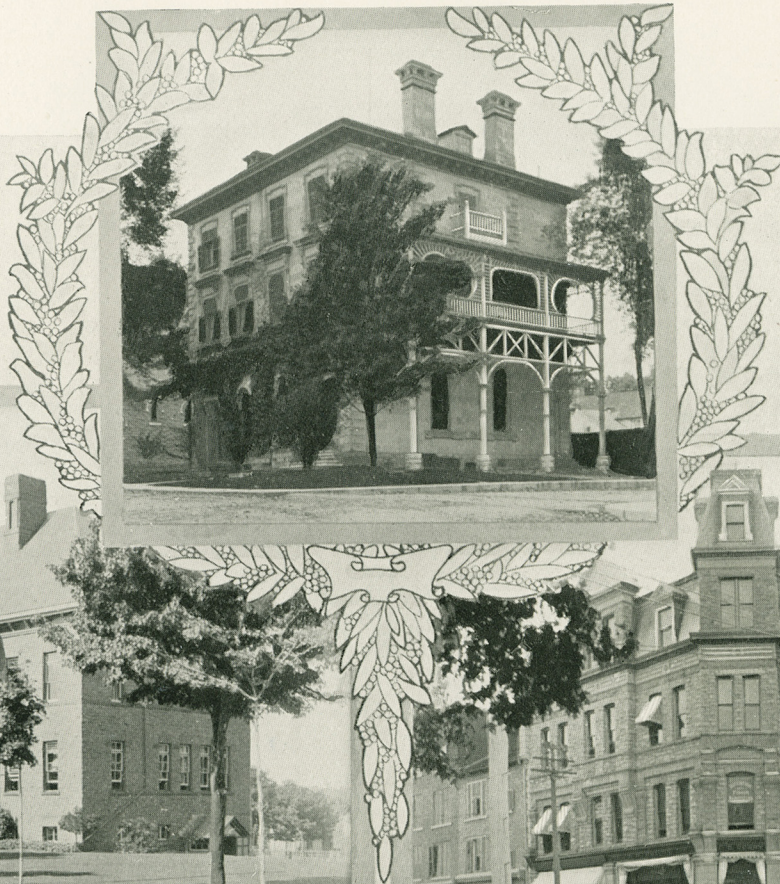
Steamer Algerian, one of the Richelieu & Ontario Navigation Co.'s line, in the Long Sault Rapids.



The Twin Sisters.

The two floating palaces of the Richelieu & Ontario Navigation Company's fleet, the finest and best equipped steamers on the St. Lawrence. To attempt a description in the short space allotted in this album would be a dismal failure. Their length is about 300 feet, beam over 60 feet, speed from 17 to 20 miles an hour. They can each furnish sleeping accommodations for about 500 people. The dining rooms have each a seating capacity for over 100 people. The parlors, smoking rooms, refreshment and writing rooms and barber shop are all in elaborate panel work and finished in natural wood. The interior finish of the dining rooms, deck saloons, galleries, main halls and smoking rooms is extravagantly done in Oriental, Grecian, Franciscan and Elizabethan styles. The main staircases are in Honduras mahogany with wrought metal balustrades in hammered leaf work; the newel posts surmounted by bronze figures supporting electric torches. These palatial steamers compare favorably with the Fall River Line.

Bank of Montreal.



Brockville Collegiate Institute.

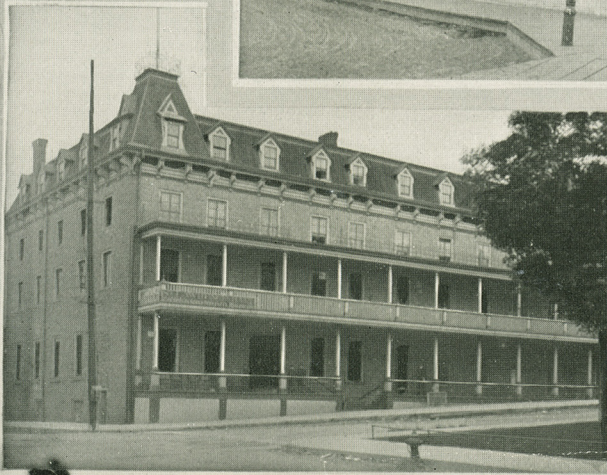


Fulford Block.

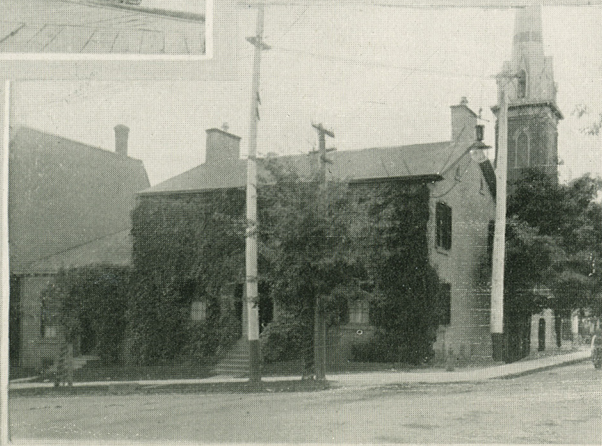
Brockville Rowing Club.



Hotel Strathcona.



St. Lawrence Hall.



The Brockville Club.

C. S. Cossitt's Residence.



Residence of Hon. G. T. Fulford.



Residence of Major Walsh.



Residence of Newton Cossitt.



Residence of J. A. McKenzie.



W. H. Comstock's Residence.

The Cossitt Terrace.



The Publow Terrace.



Dunham Block.

