

# VANKLEEK HILL

POPULATION 2,000 ONT.

2 OLD HAND FIRE ENGINES 300' OF CANVAS HOSE

MAY 1900

Montreal and Toronto, CANADA and London, ENGLAND

Chas. E. Good, Civil Engineer

### KEY

BUILDINGS RED ARE BRICK  
 COLORED BLUE STONE  
 YELLOW ARE WOODEN BUILDINGS  
 BLACK SHEDS, BARNs &c  
 EDGED WITH RED ARE VENEERED  
 IF MARKED R.C. ROUGH CAST OR PLASTER  
 PROBABLE FIRE CUT OFF

NO OF STORIES 2 3  
 SLATE ROOF  
 TILE OR METAL ROOF  
 COMPOSITION ROOF  
 SHINGLES OR WOODY  
 SHINGLES IN MORTAR  
 MISCELLANEOUS  
 ROOFS

BOILERs  
 SET IN BRICK  
 PASSAGE UNDER

FIRE WALL ONE FOOT ABOVE ROOF  
 TWO FEET

OPENING IN BRICK WALL  
 OPENING WITH IRON DOORS  
 WOODEN PARTITION

WINDOWS READ FROM LEFT TO RIGHT  
 FACING BUILDING  
 1ST, 2ND, 3RD, 2ND & 3RD, 4TH  
 IRON SHUTTERS

BRICK PARAPET WALL  
 STABLE  
 GALLERY OR VERANDAH  
 METAL CORNICE (SOLID LINE)  
 WOODEN CORNICE (BROKEN LINE)

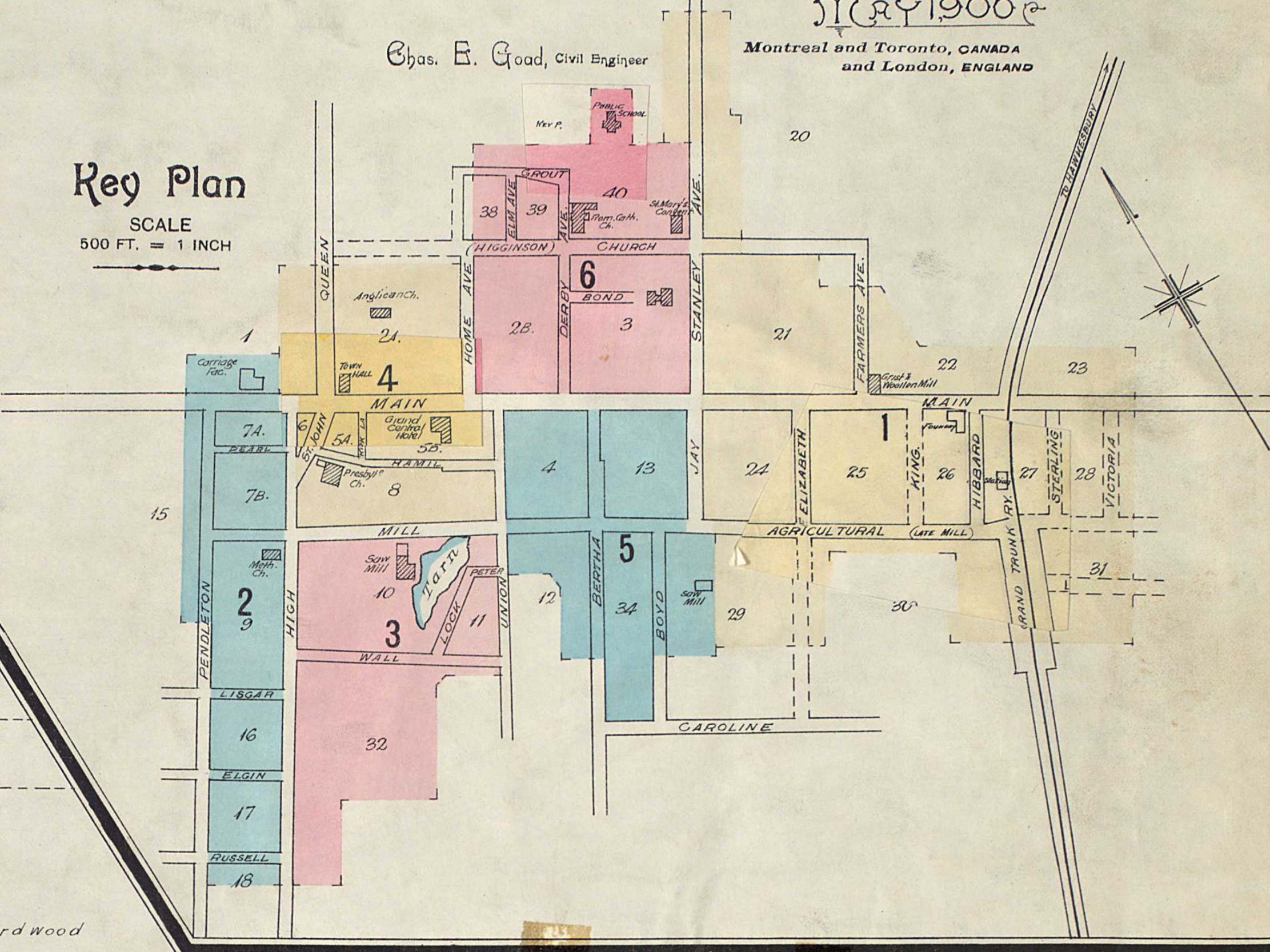
SKYLIGHT - LINES UNDER DENOTE OPENINGS IN FLOORS  
 LUMBER PILED  
 HYDRANTS ON KEY PLAN

TANKS ON KEY PLAN

FIGURES IN BRACKETS (60' &c) DENOTE  
 RELATIVE HEIGHTS OF GROUND.  
 N<sup>o</sup>s IN STREETS THUS 100' ARE STREET WIDTHS  
 S DENOTES STORE  
 DD DETACHED DWELLINGS, SD SCATTERED DWs

## Key Plan

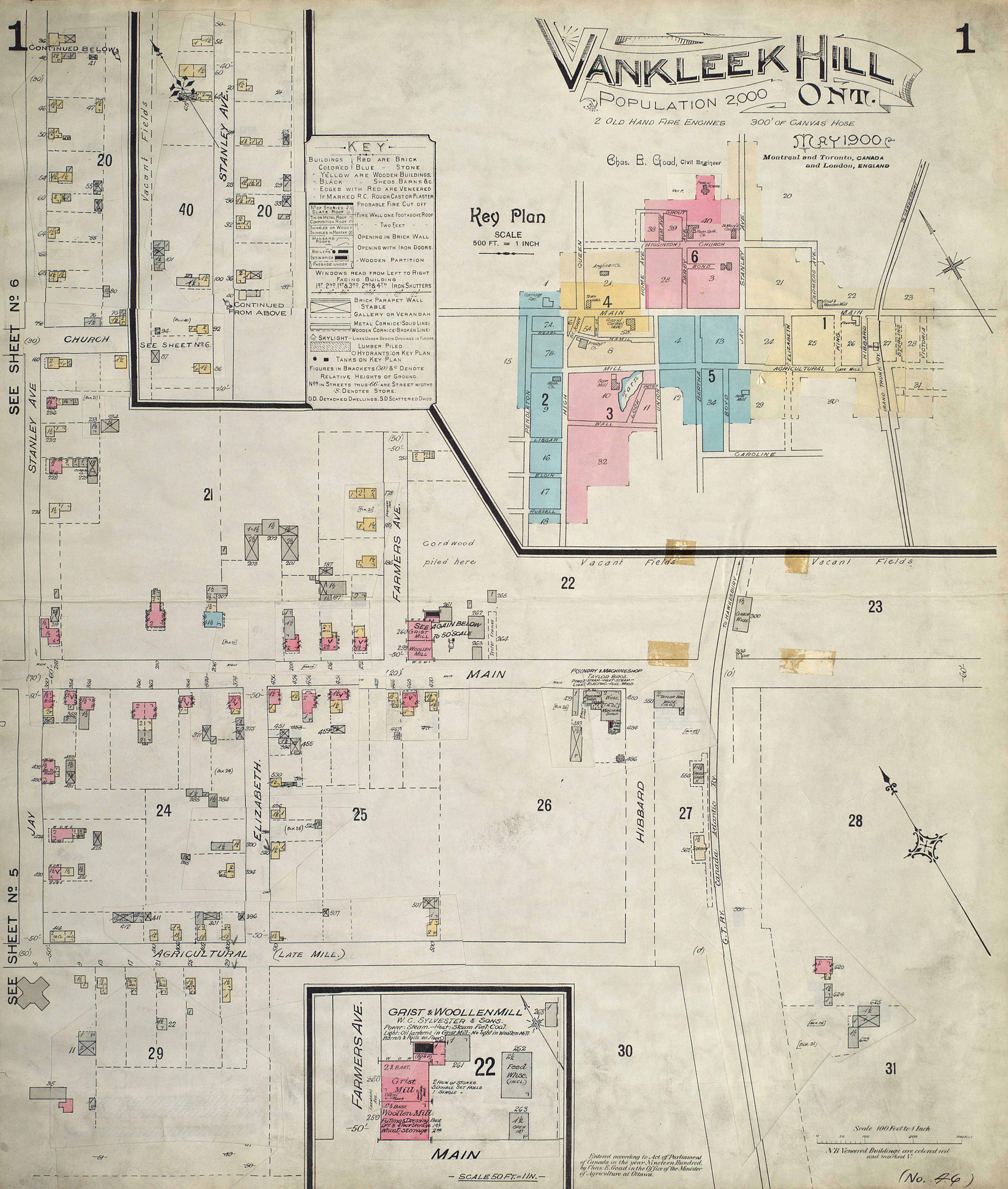
SCALE  
 500 FT. = 1 INCH



1  
 CONTINUED BELOW

SEE SHEET NO. 6

SEE SHEET NO. 5



### FARMERS AVE.

**GRIST & WOOLLEN MILL**  
 W. C. SYLVESTER & SONS.  
 Power: Steam - Heat: Steam Fuel: Coal  
 Light: Oil Lamps in Grist Mill. No light in Woollen Mill.  
 Barrels & Pails on Floor

260 Grist Mill  
 20' BAST.  
 259 Woollen Mill  
 Fulling Dressing Box  
 Card & Four Straps, 185  
 Wheat Storage 258

262 Feed Whse. (INCL.)  
 263 1 1/2 OPEN ST.

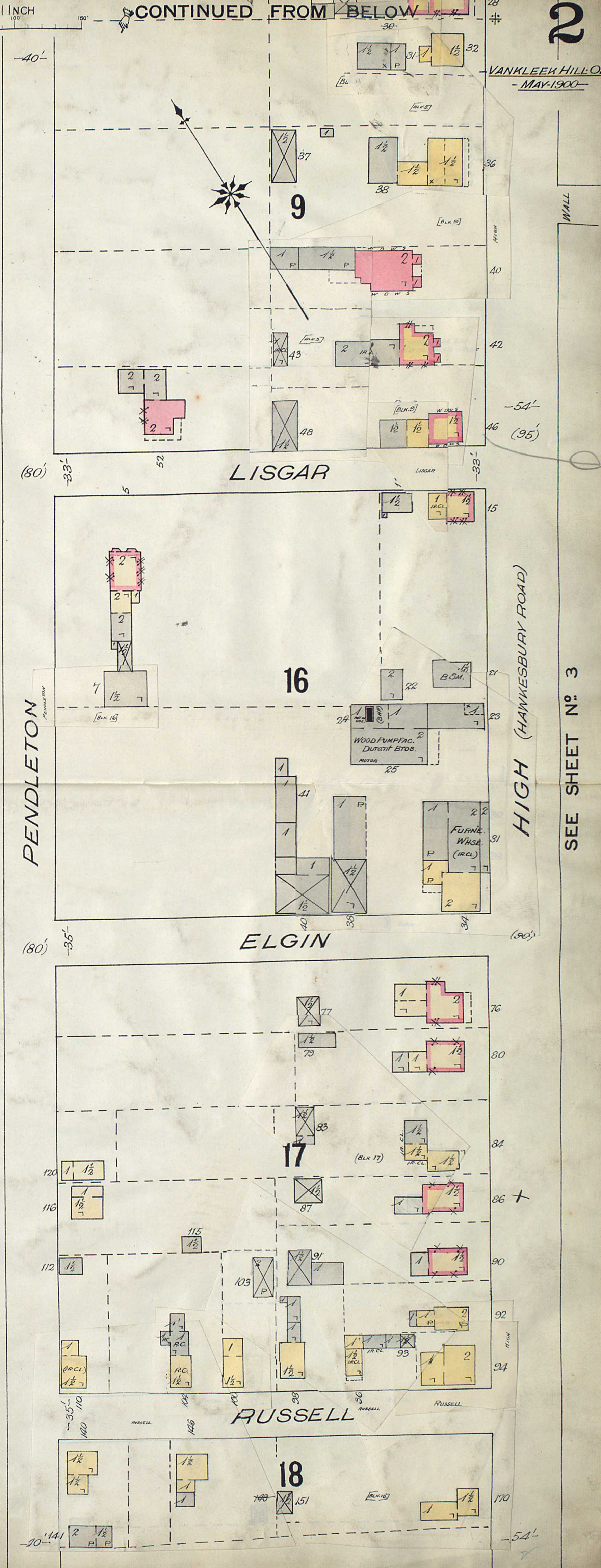
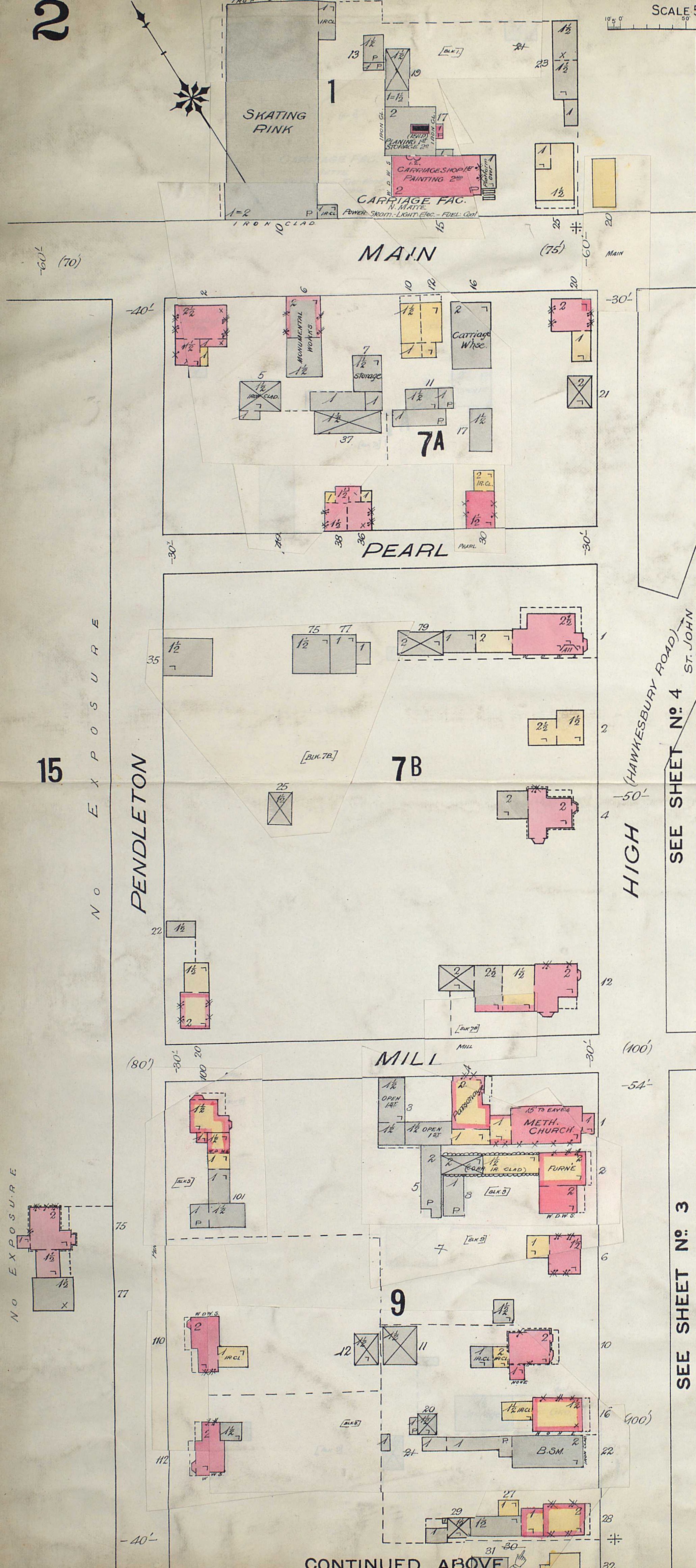
MAIN

SCALE 50 FT. = 1 IN.

Entered according to Act of Parliament of Canada in the year Nineteen Hundred, by Chas. E. Good in the Office of the Minister of Agriculture at Ottawa.

Scale 100 Feet to 1 Inch  
 N.B. Veneered Buildings are colored red and marked V.

(No. 74)



NO EXPOSURE

NO EXPOSURE

PENDLETON

HIGH (HAWKESBURY ROAD)  
ST. JOHN

PENDLETON

HIGH (HAWKESBURY ROAD)

SEE SHEET NO. 3

SEE SHEET NO. 4

CONTINUED ABOVE

SEE SHEET NO. 3

3

3

MILL

VANKLEEK MANUF'G. CO.  
SAY MILL, SASH & DOOR FAC.  
Power: Steam - Heat: Steam  
DRY FUEL: Shavings.  
MILN FORCE PUMP & 150 OF 2" 110SE

TARN

PETER

UNION

10

11

WALL

LOCH

HIGH

32

Vacant Fields

CONTINUED FROM BELOW

HIGH

32

Vacant Fields beyond

SEE SHEET N° 2

SCALE 50 FT. = 1 INCH

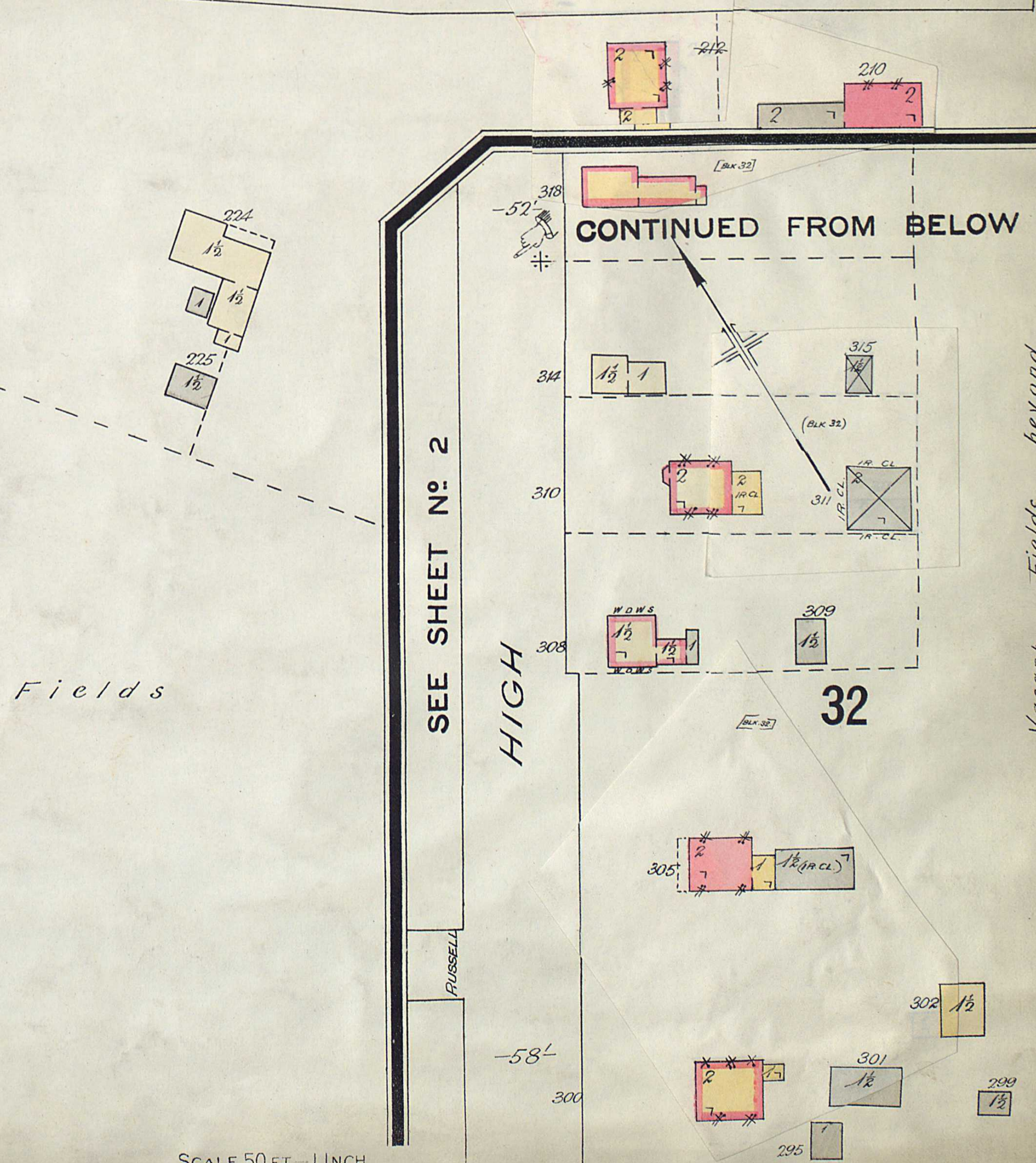
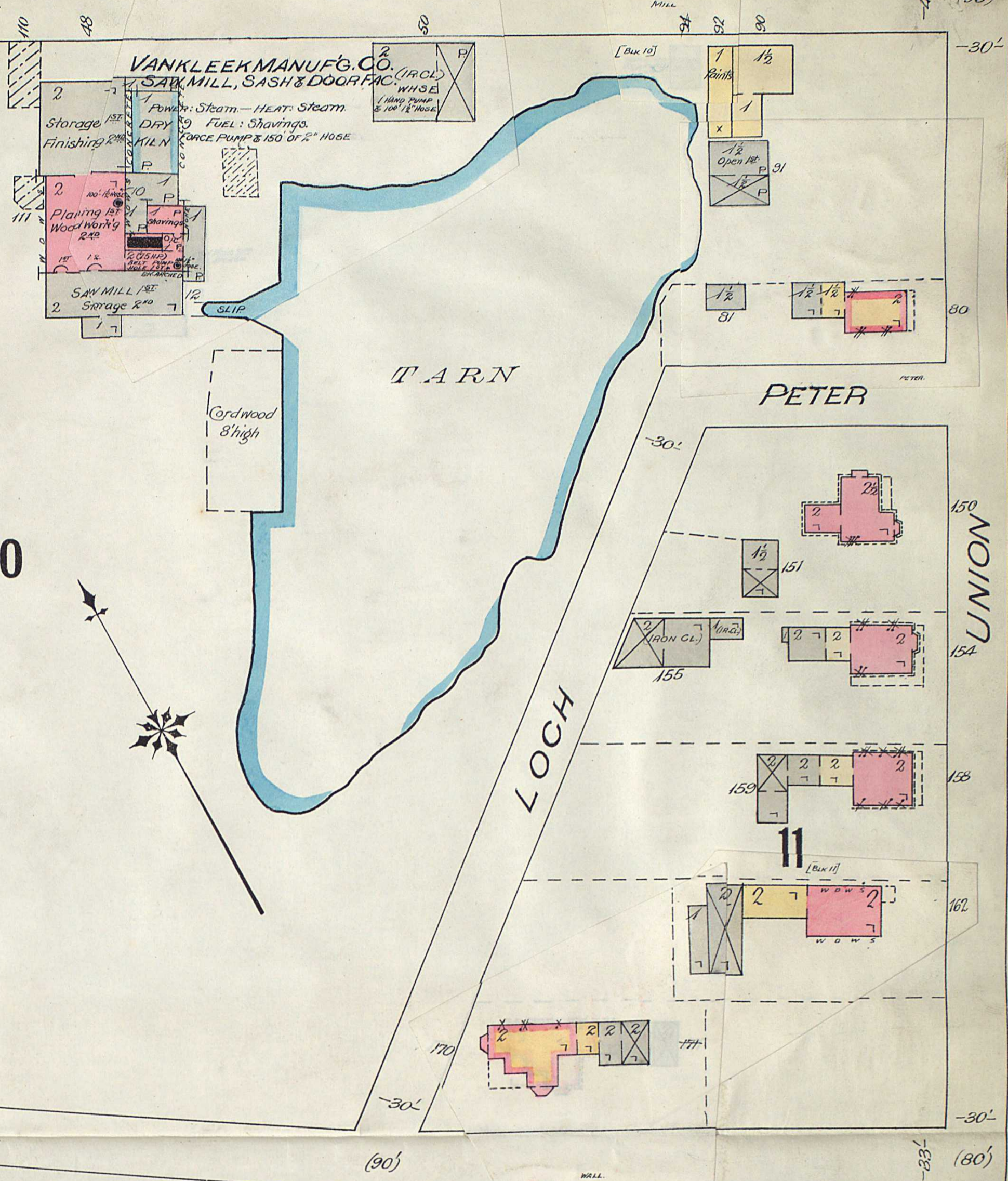
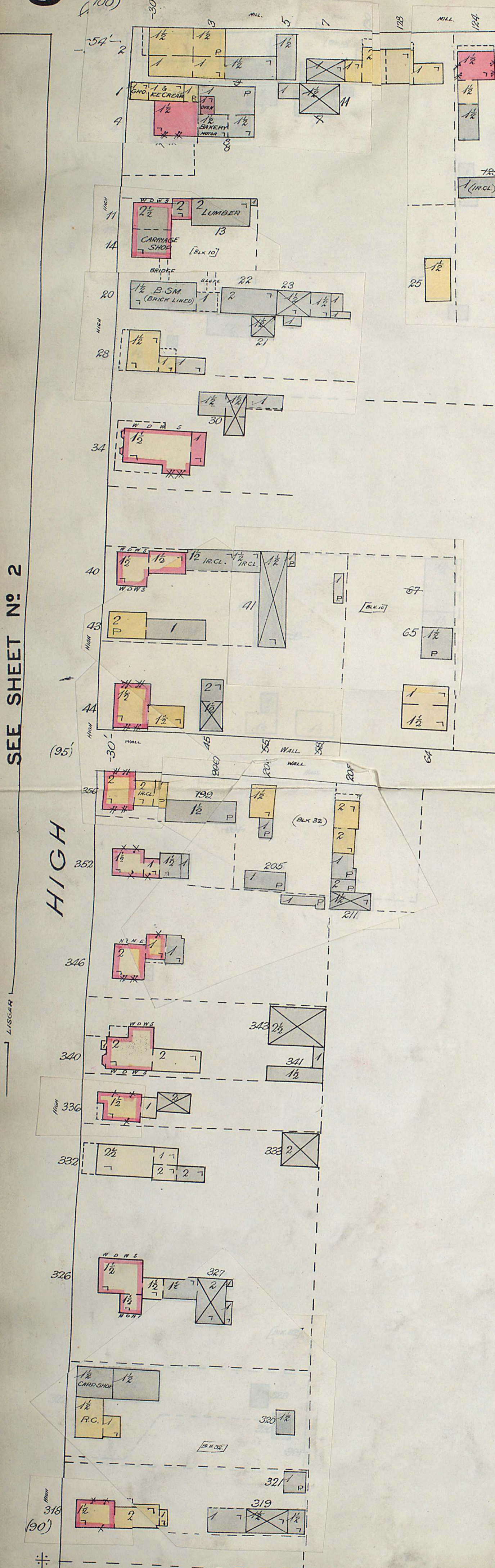
Vacant Fields beyond.

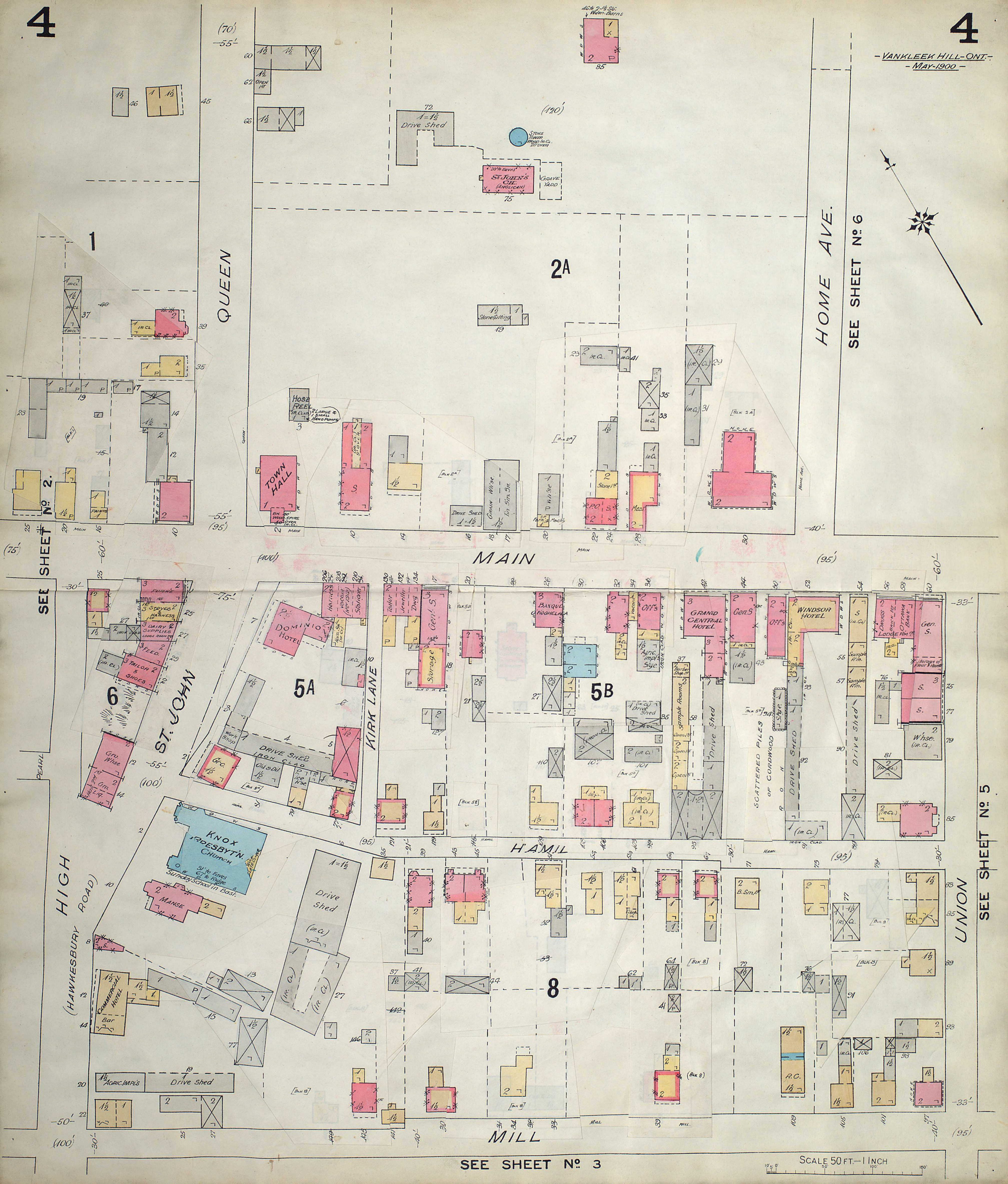
SEE SHEET N° 2

NO EXPOSURES

SA

CONTINUED ABOVE





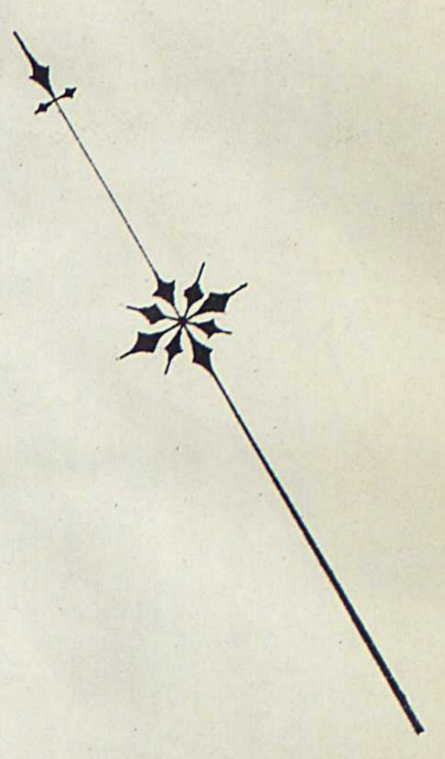
SEE SHEET No 2.

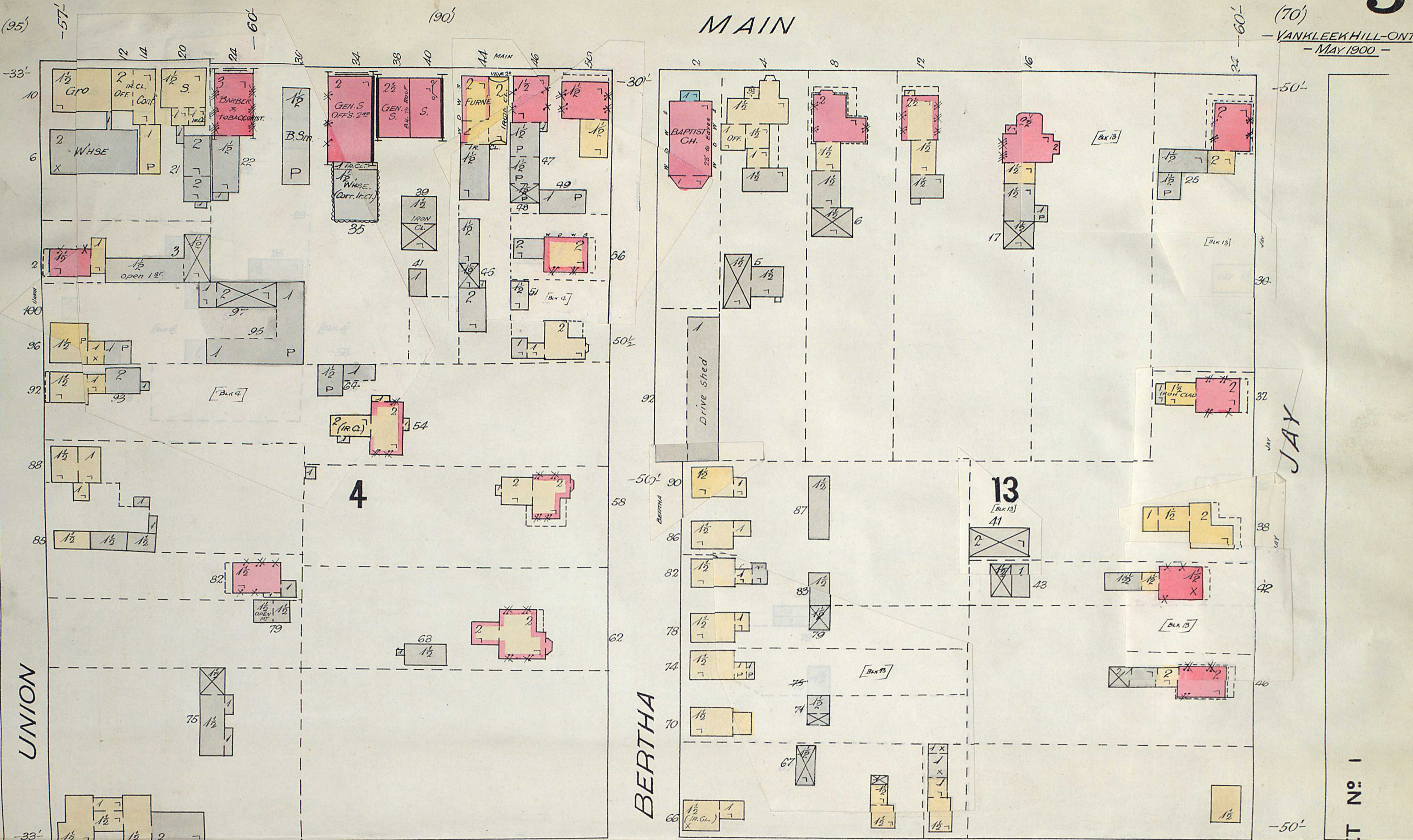
HOME AVE.  
SEE SHEET No 6

SEE SHEET No 5

SEE SHEET No 3

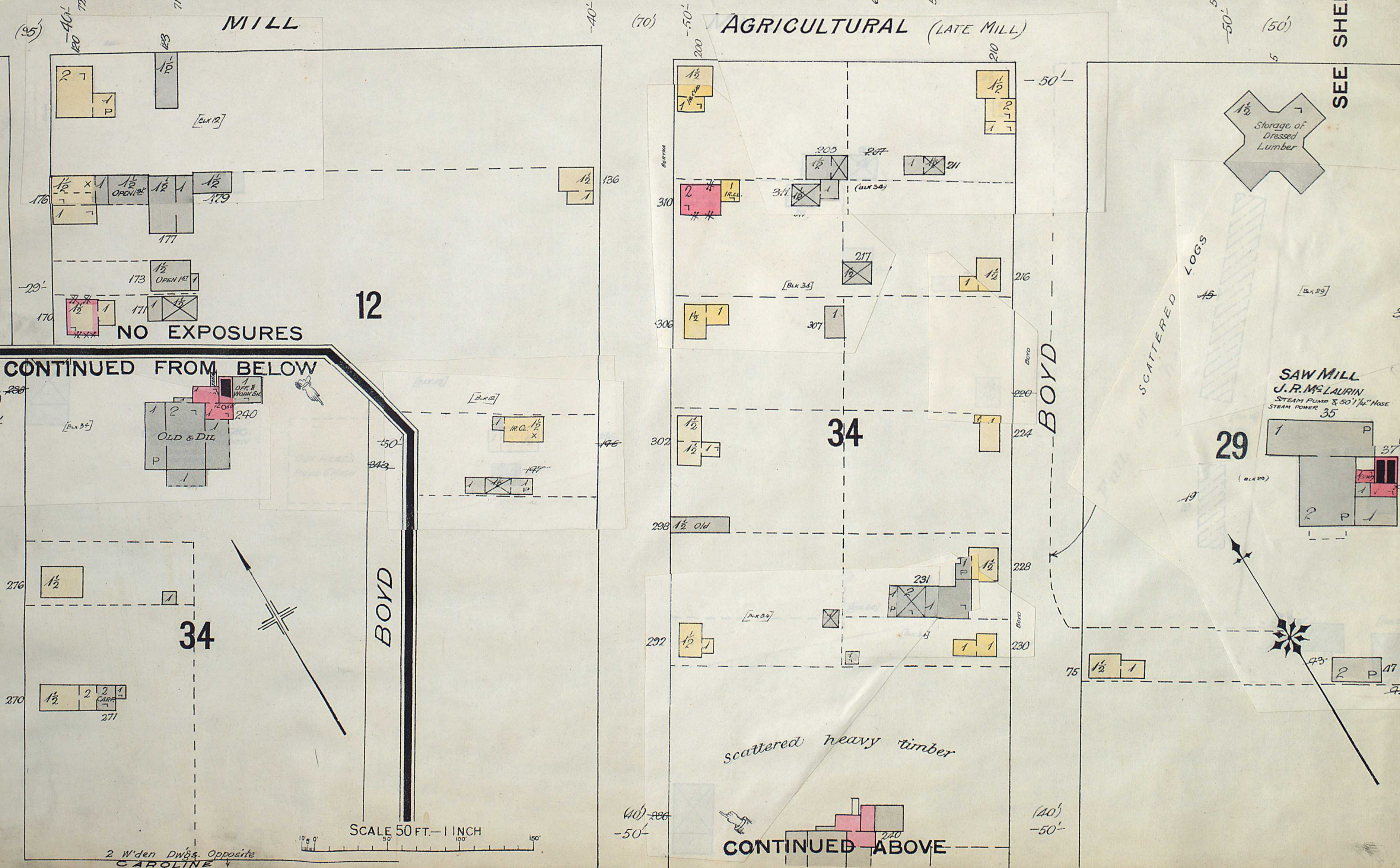
SCALE 50 FT. = 1 INCH





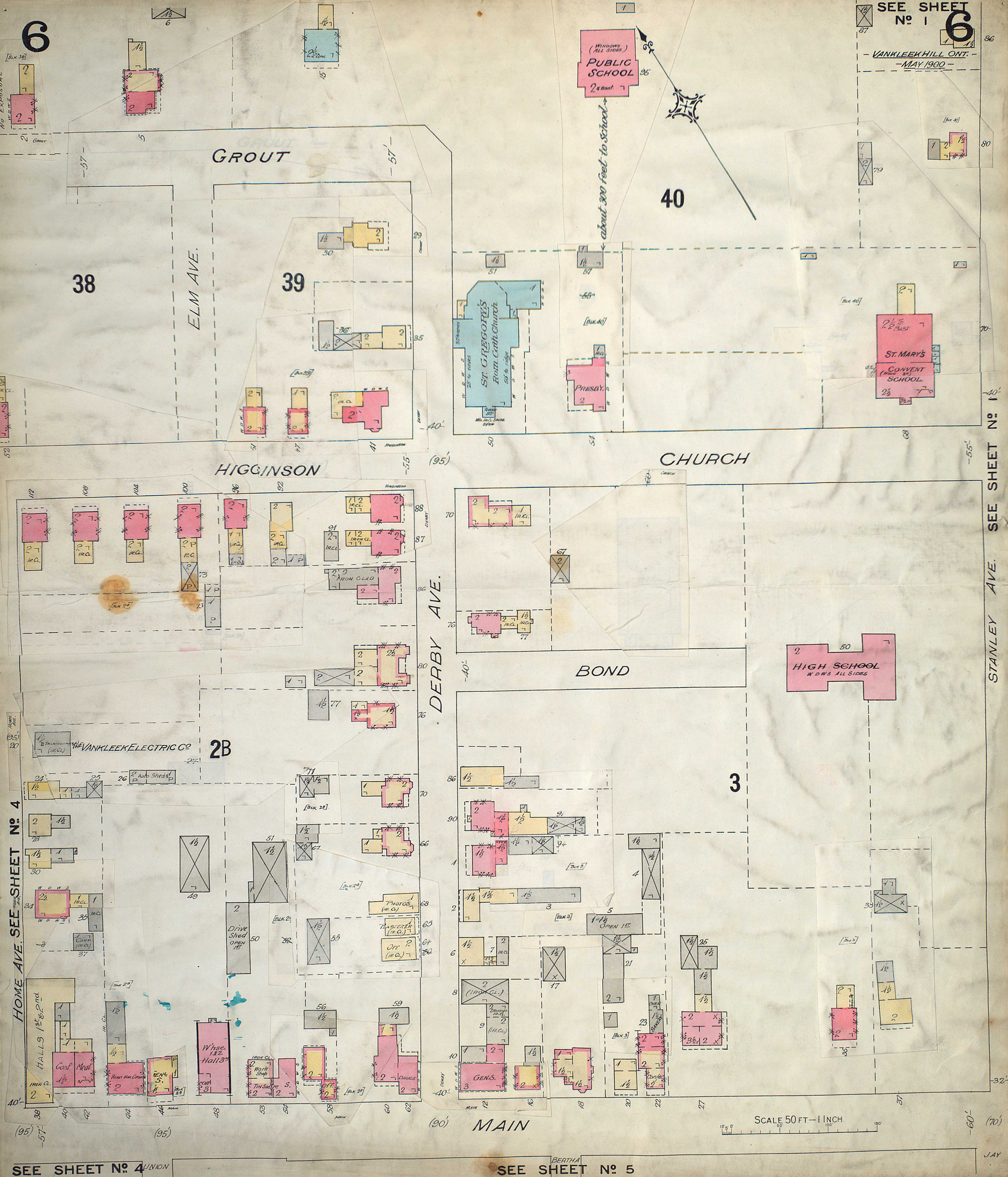
SEE SHEET NO. 4

SEE SHEET NO. 1



SEE SHEET NO. 3

SEE SHEET NO. 1



HOME AVE. SEE SHEET No. 4

SEE SHEET No. 1  
STANLEY AVE.

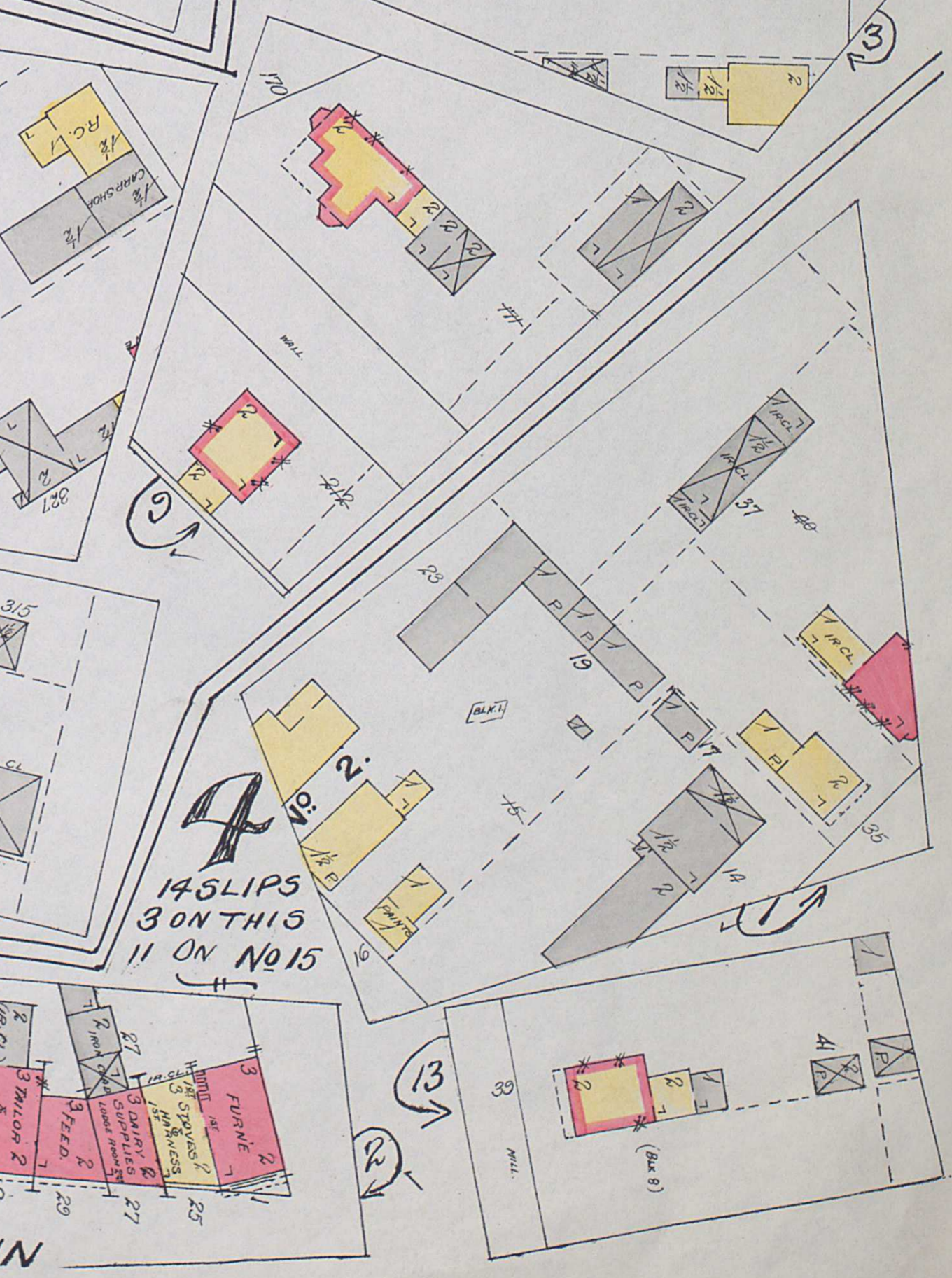
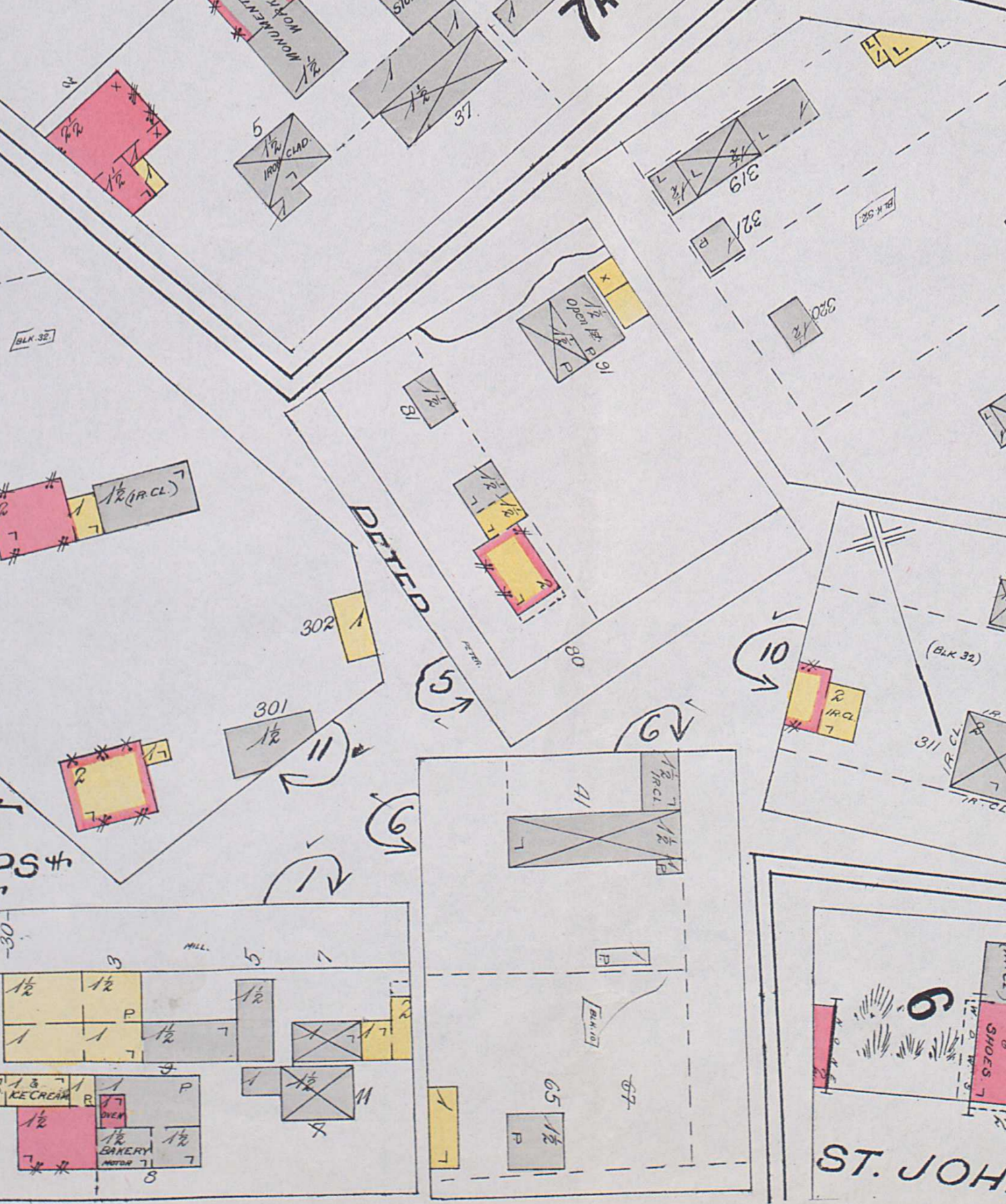
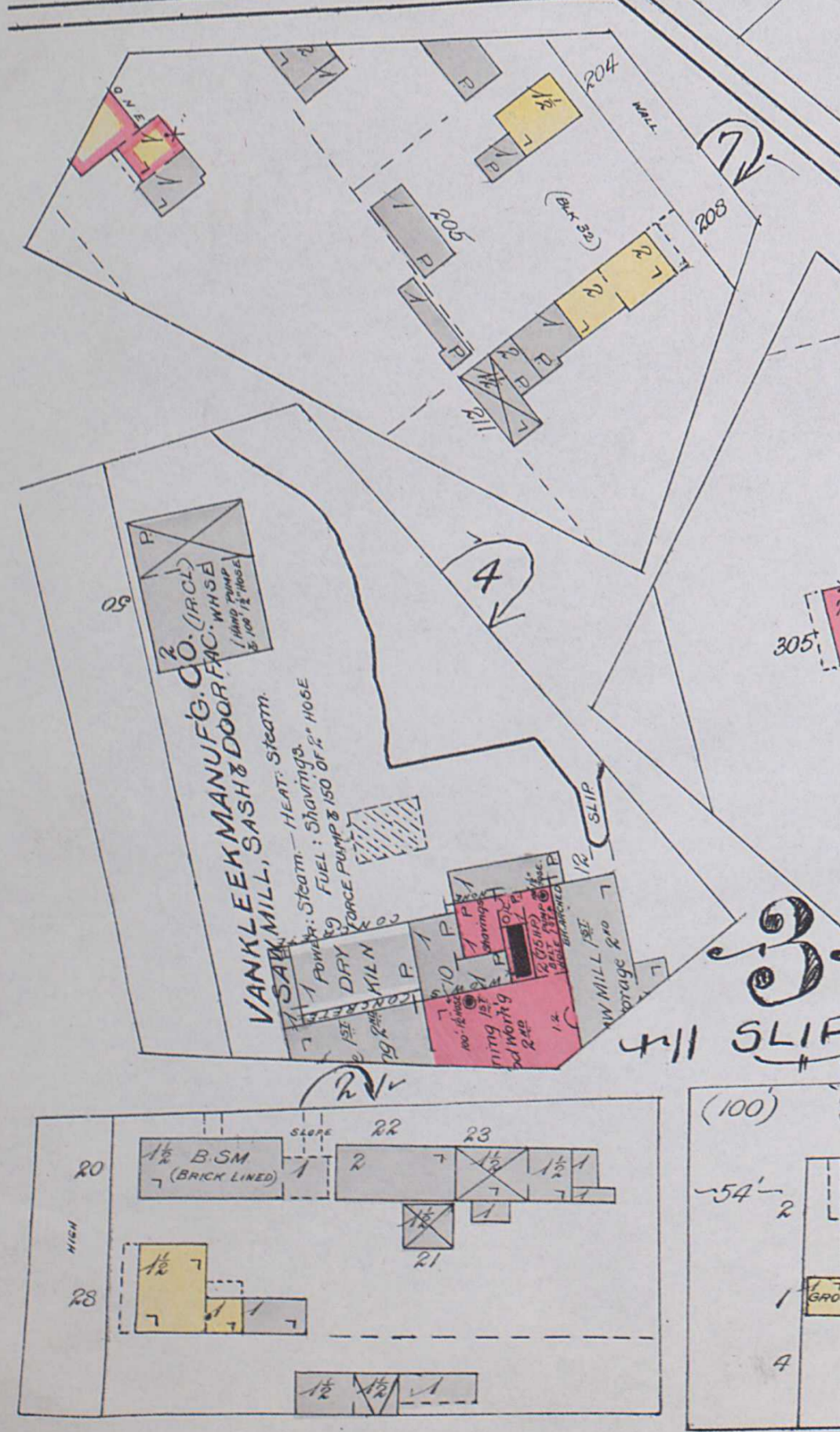
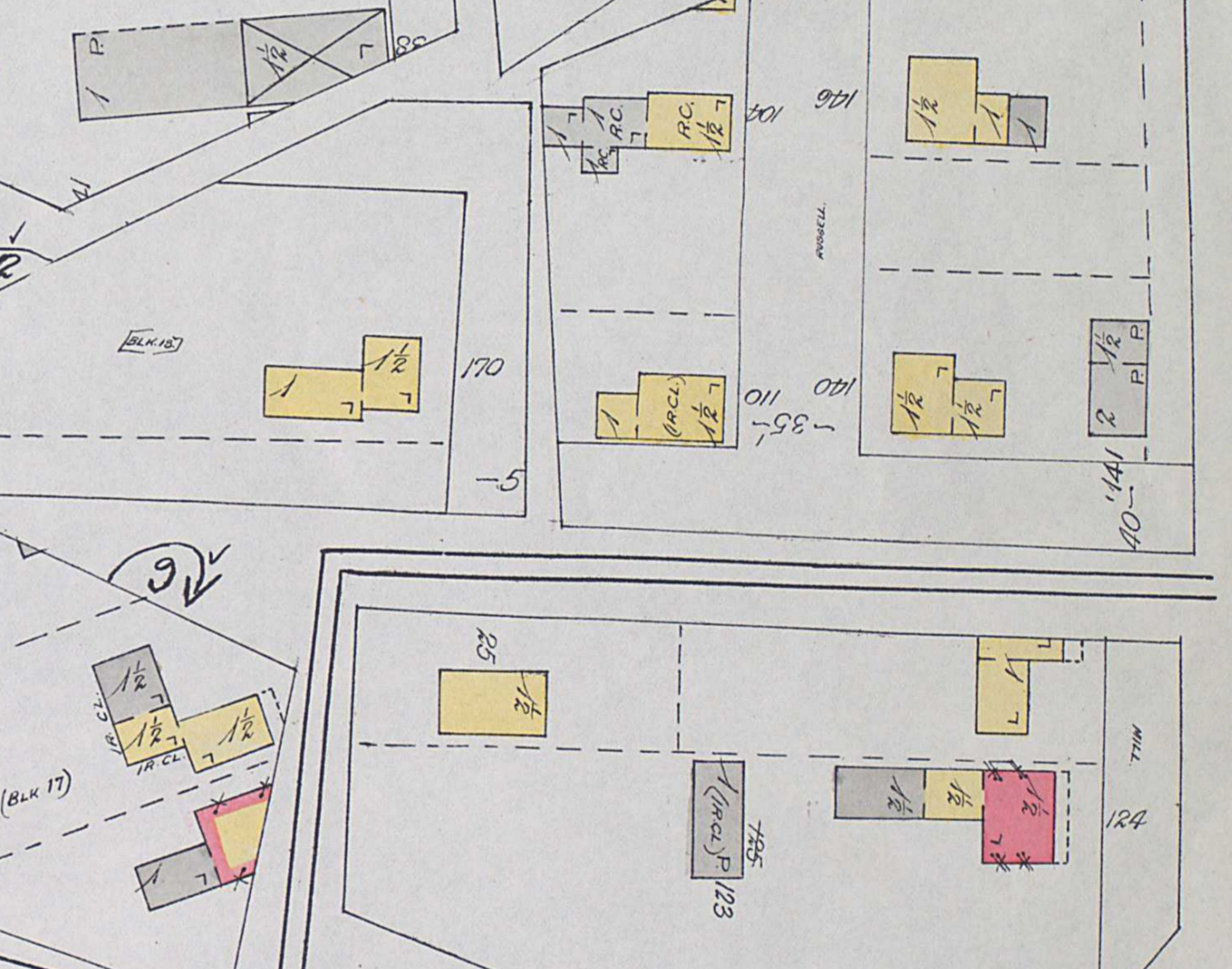
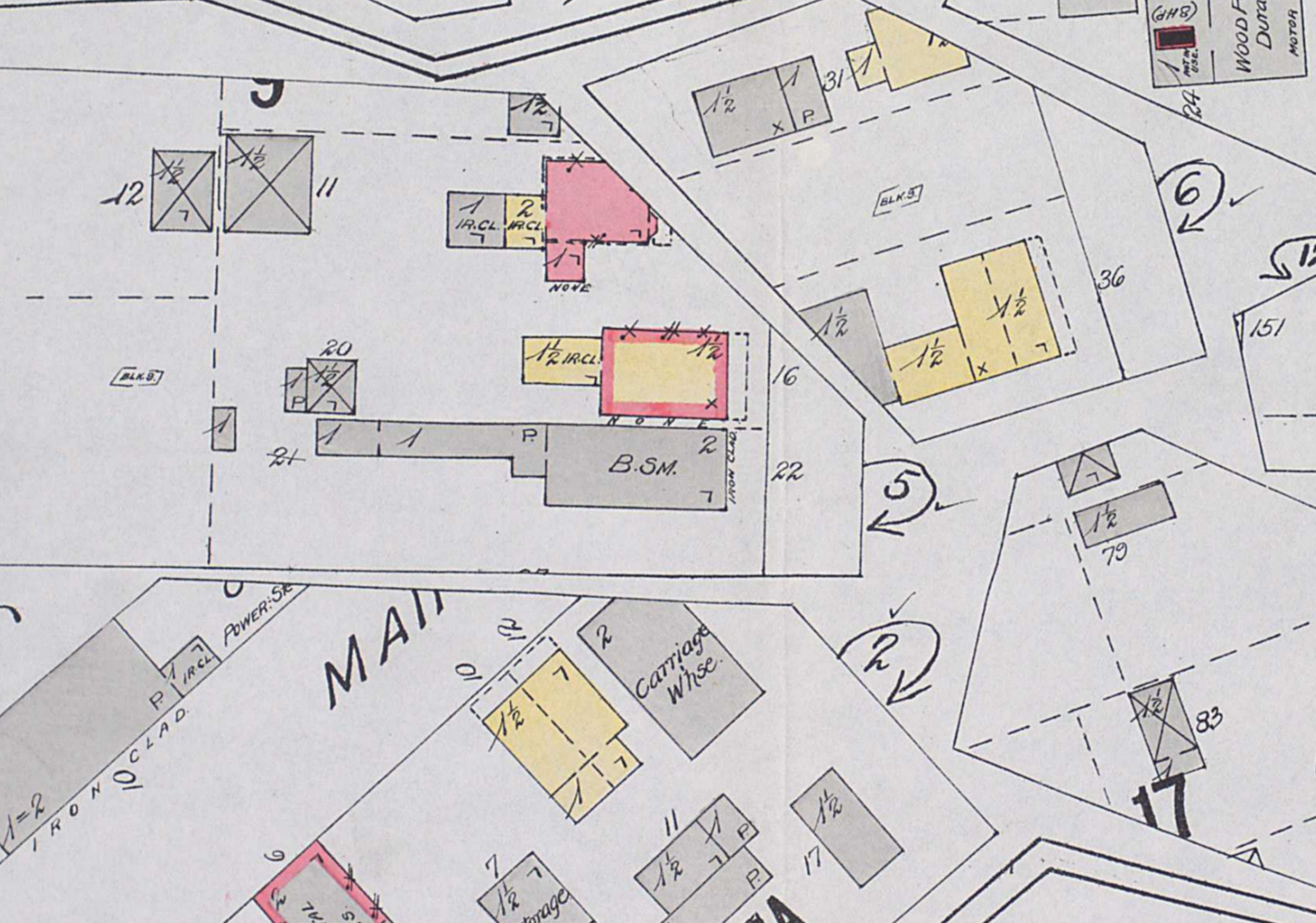
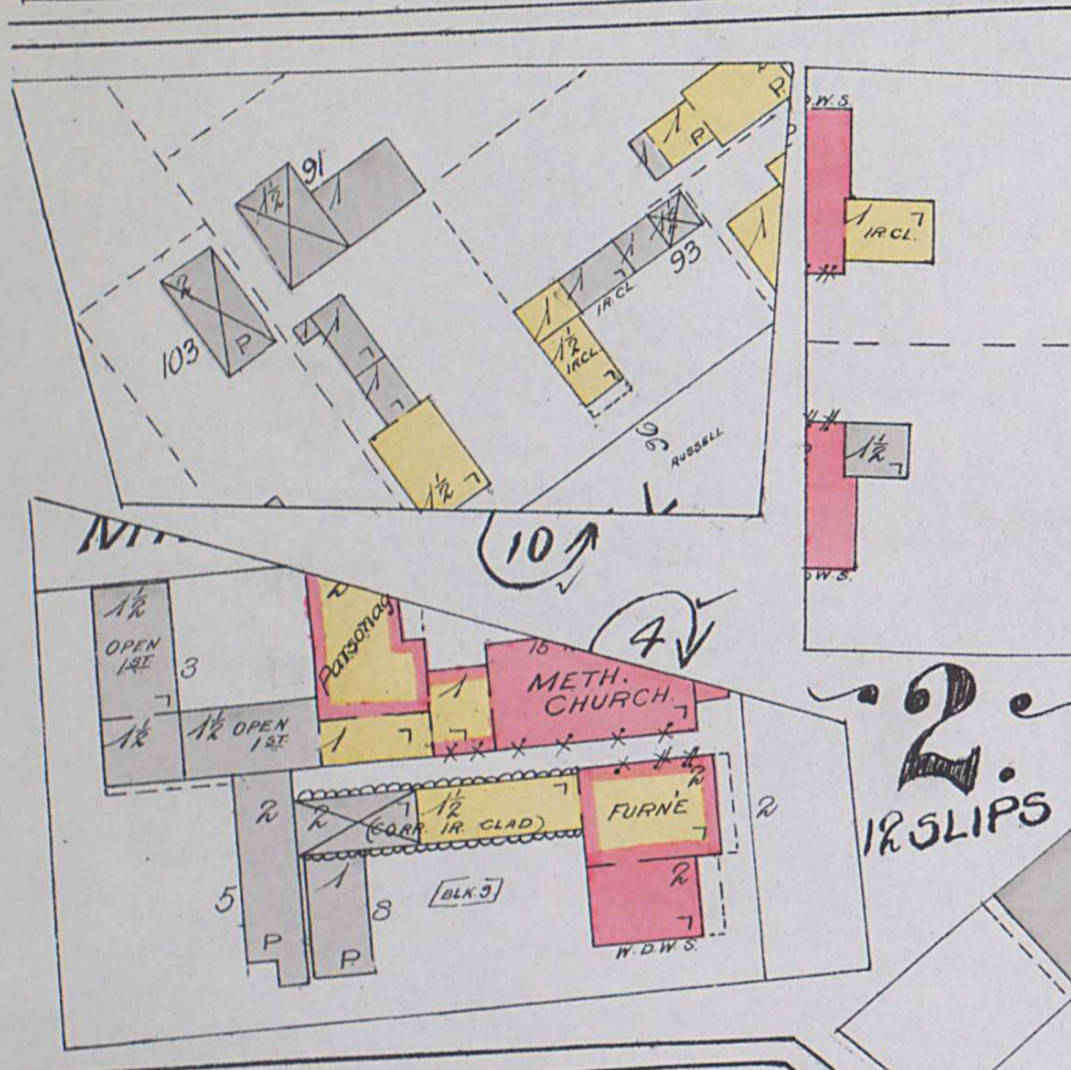
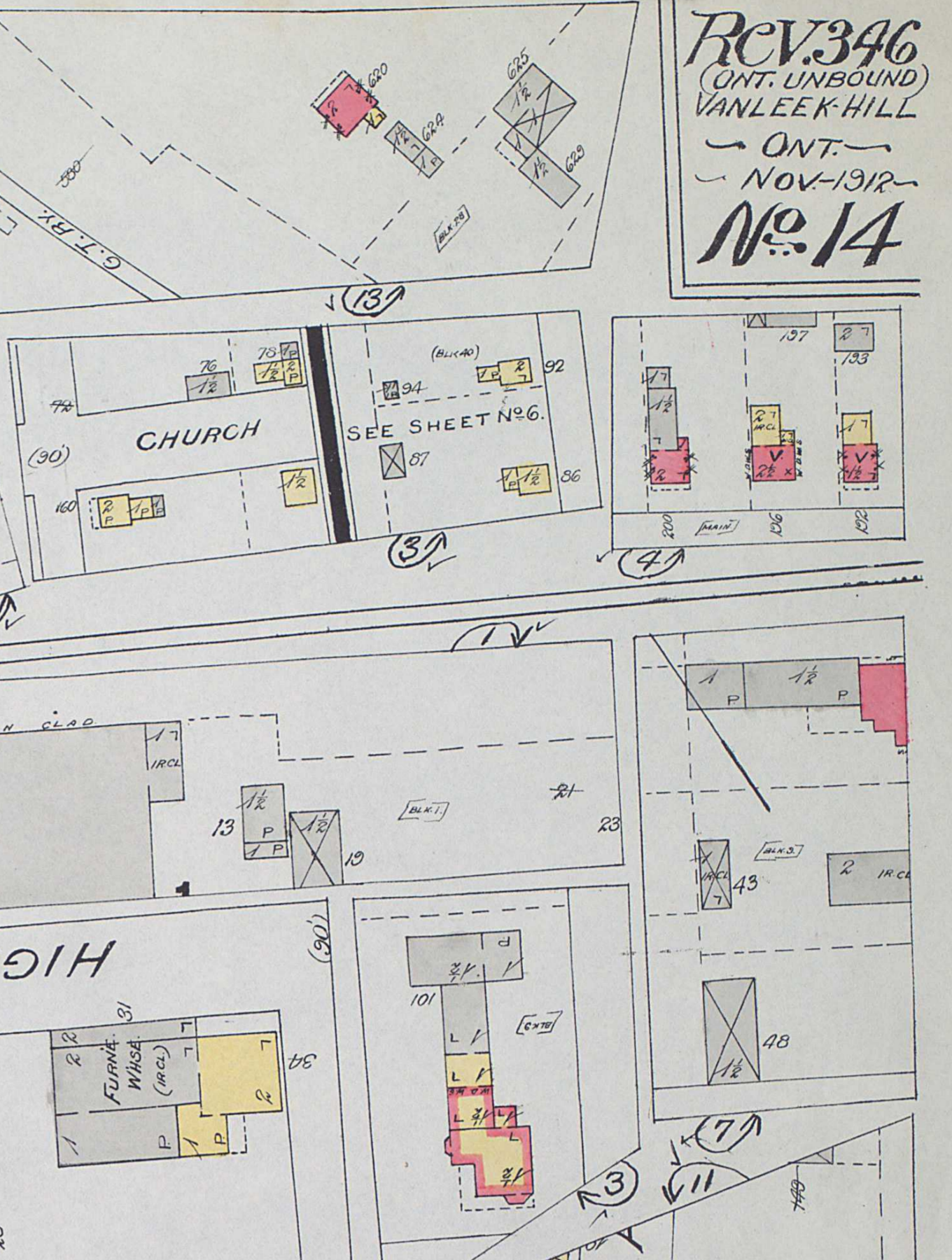
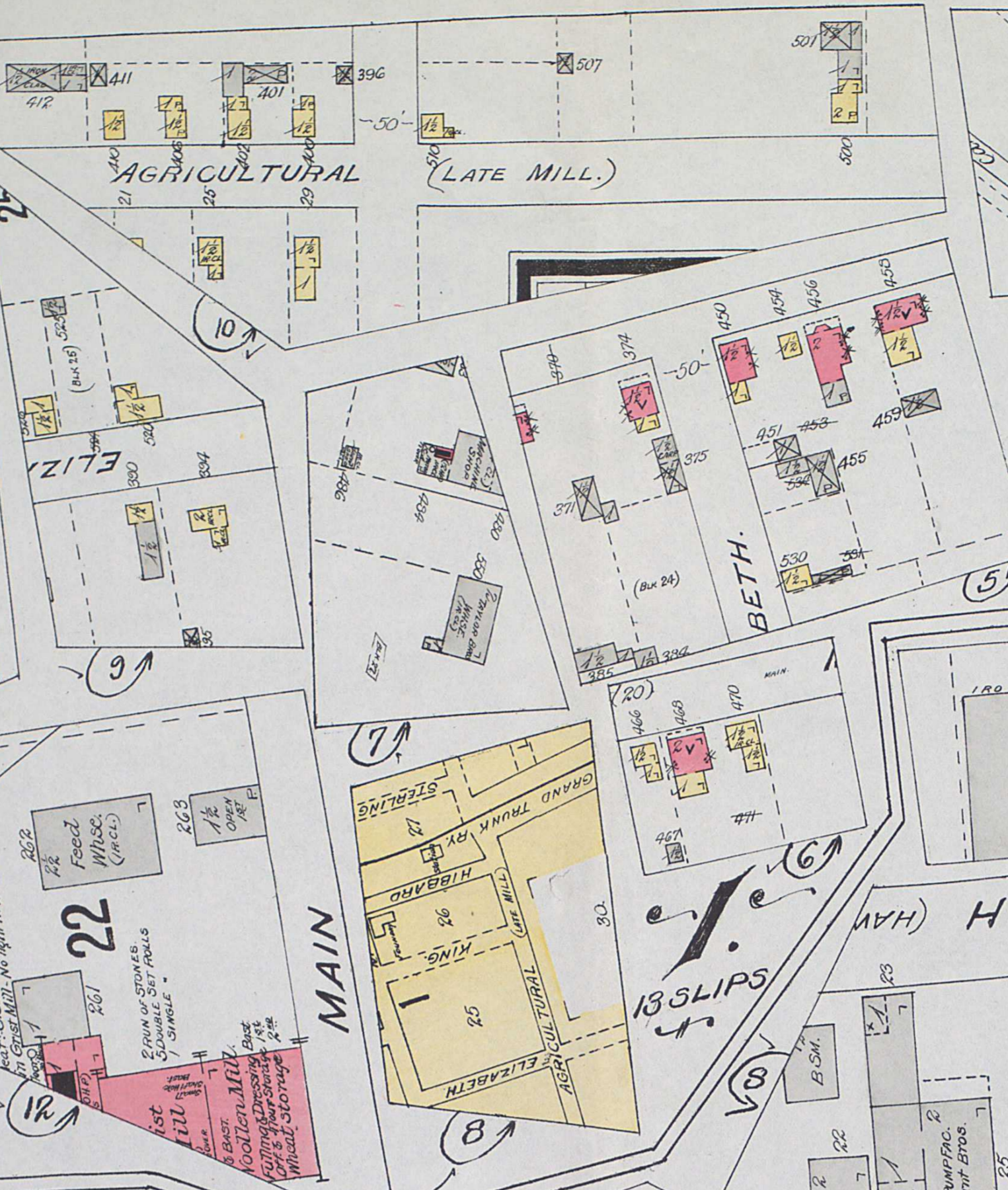
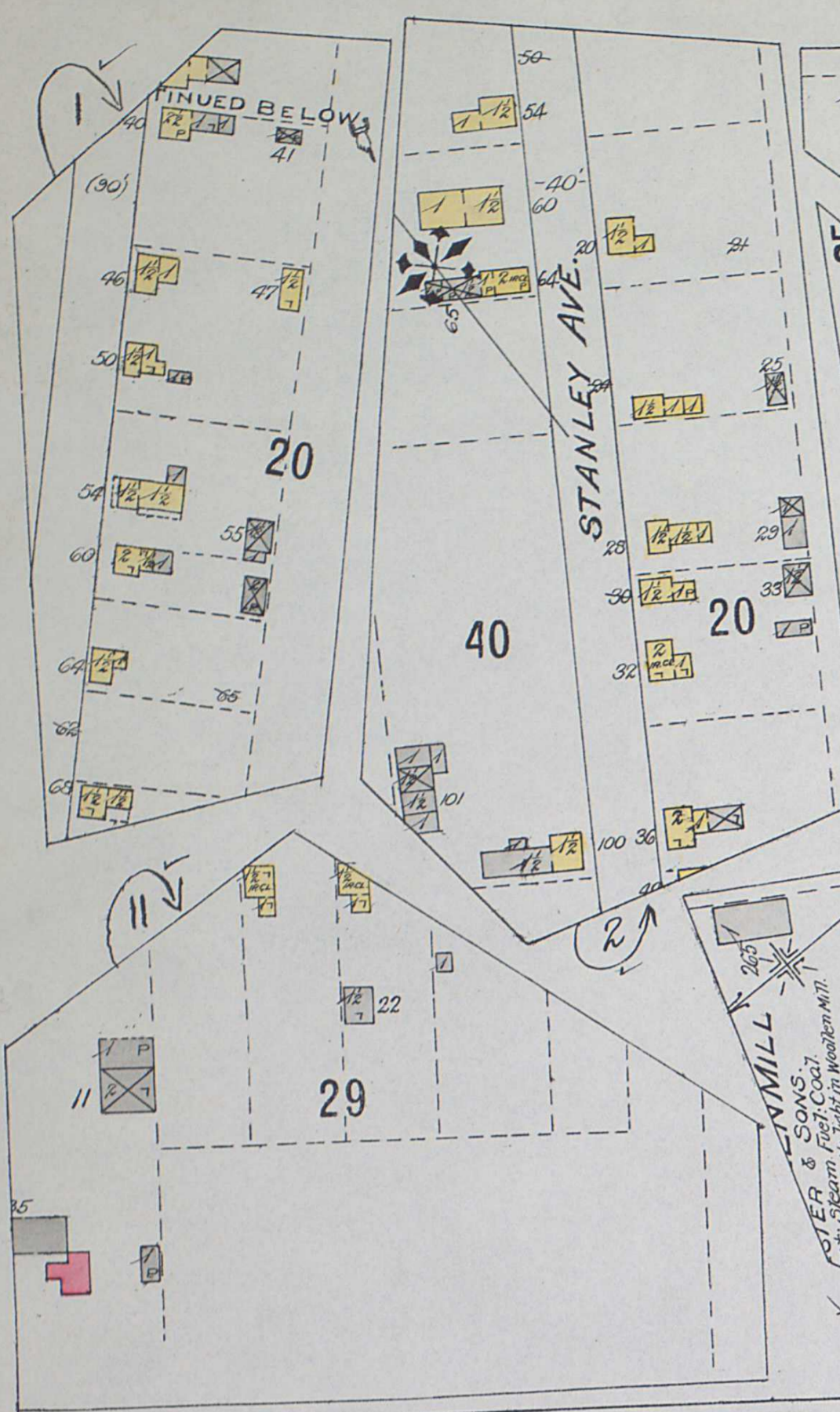
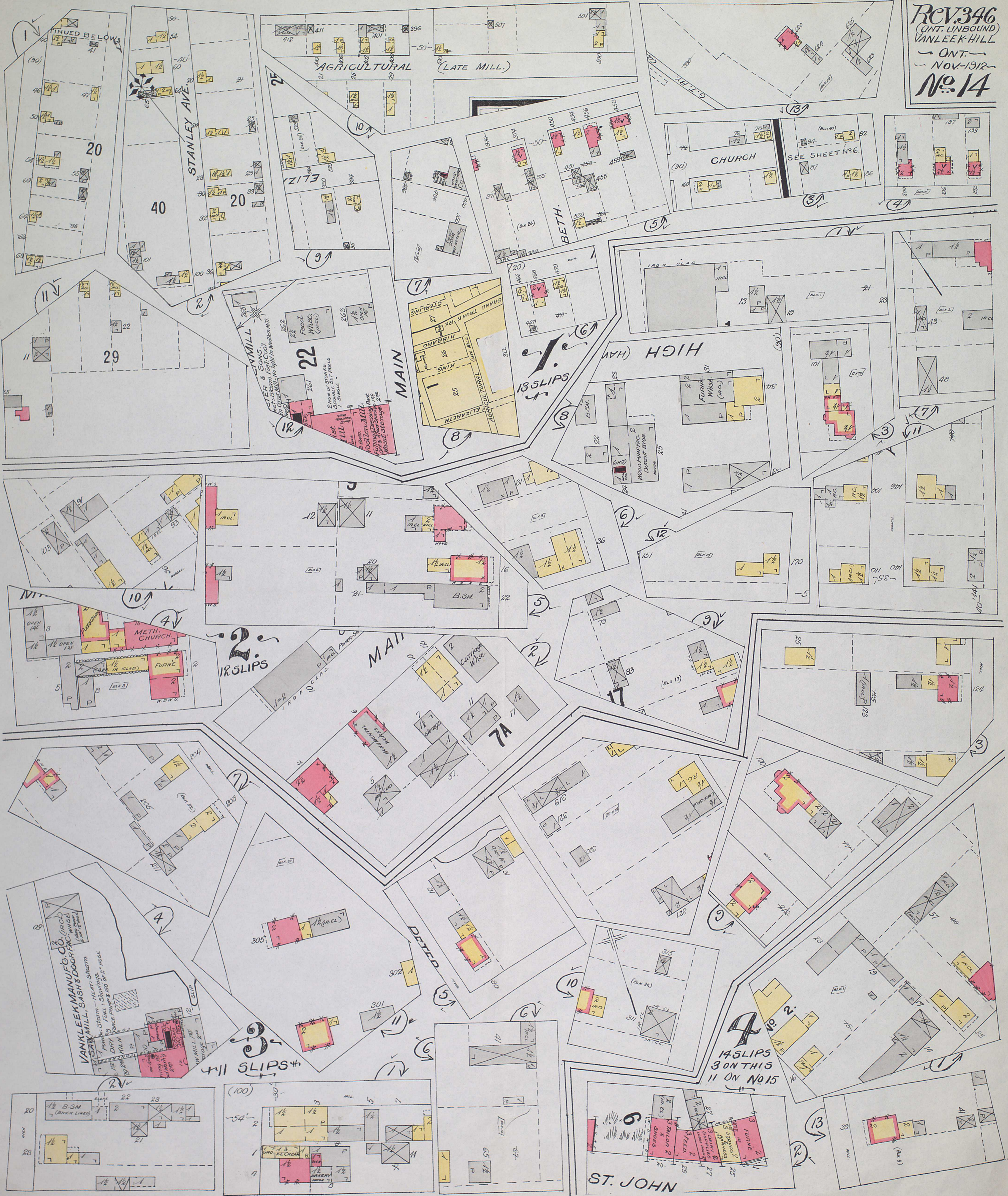
SCALE 50 FT. = 1 INCH

SEE SHEET No. 4 UNION

SEE SHEET No. 5 BERTHA

JAY

REV. 346  
(ONT. UNBOUND)  
VANLEEK HILL  
ONT.  
NOV-1912  
No. 14



Rev 346  
ONTARIO  
UNBOUND  
NOV 1912  
No 15  
(VANKLEEN HILL)



NOS 1/4



# VANKLEEK HILL

Rev. 284  
Eastern Ont.  
Sept. 1908

## No 16



2  
10 slips

4  
9 slips

1  
10 slips

3  
5 slips

5  
10 slips

39

E. AVE. SEE SHEE

6  
11 slips

2B

THE VANKLEEK ELECTRIC CO

PRESBYT. CHURCH

KIRK LANE

CHURCH

GRIST MILL

SHATING FLINT

CARRIAGE FAC.

SCATTERED PILES OF CORDWOOD

SCATTERED LOGS

MOTE

HOME AVE.

GENS.

11 slips