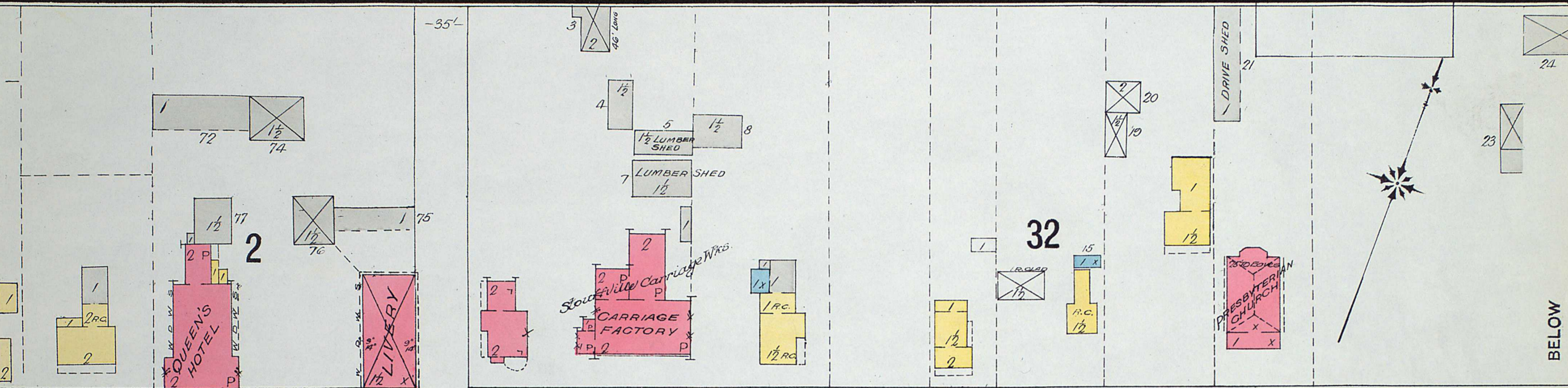


KEY PLAN

SCALE 500' - 1" INCH

STOUFFVILLE, ONTARIO.
 YORK COUNTY
 MAY, 1910.
 POPULATION, 1000.
 WATER WORKS: - Gravity
 Supply, Reservoir 3 1/2 North of Town
 28 Hydrants, 21 Men
 Ladders 13 Hoses, Reels (Firemen only paid
 when a fire by the hour)
 7, F.A. BOXES
 GROUND PRACTICALLY LEVEL
 CHAS. E. GOAD
 CIVIL ENGINEER
 TORONTO & MONTREAL

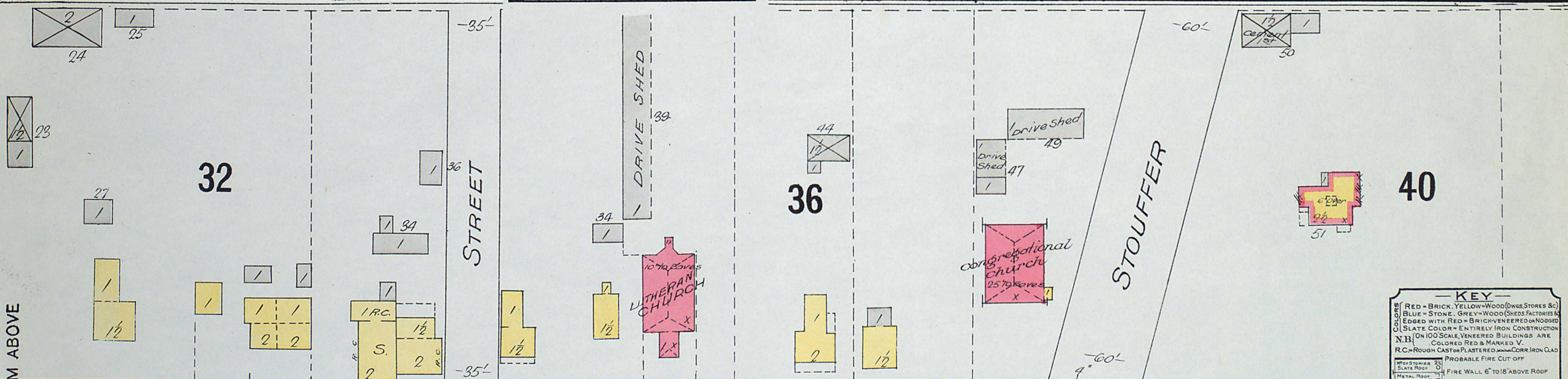
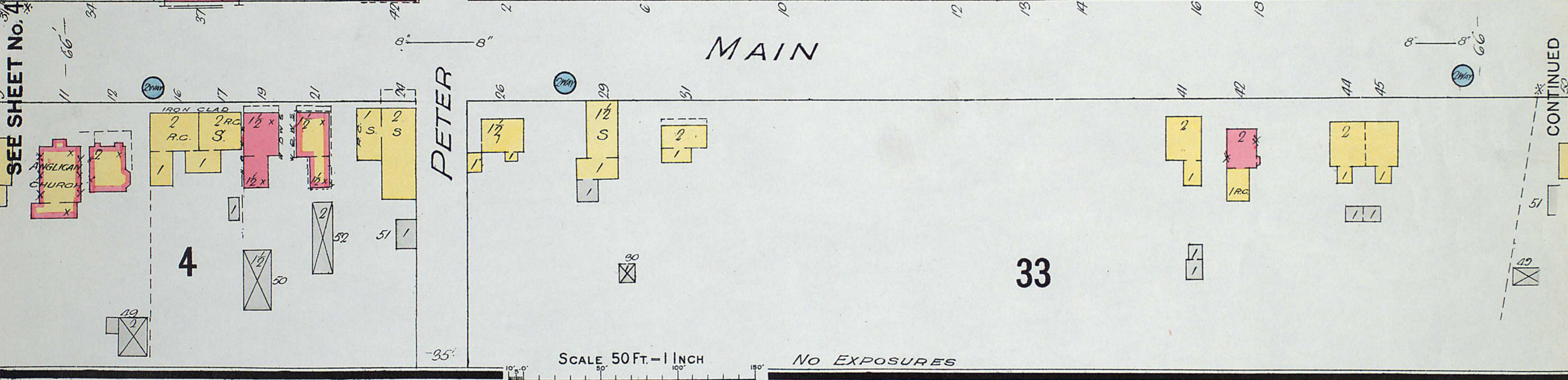
SPACE FOR BLUE SLIP



MAIN

SCALE 50 FT. - 1" INCH

NO EXPOSURES



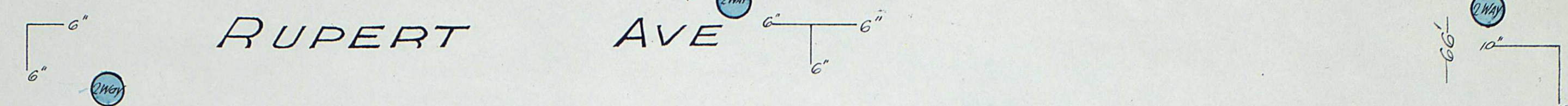
KEY

- RED = BRICK, YELLOW = WOOD (DWES, STORES, ETC.)
- BLUE = STONE, GREY = WOOD (SHEDS, FACTORIES)
- EDGED WITH RED = BRICK VENEERED OR NOGGED
- SLATE COLOR = ENTIRELY IRON CONSTRUCTION
- ON 100' SCALE, VENEERED BUILDINGS ARE COLORED RED & MARKED V.
- R.C. = ROUGH CAST OR PLASTERED CORN IRON CLAD
- PROBABLE FIRE CUT OFF
- METAL ROOF
- CONCRETE ROOF
- SHEDS ON BOARD
- MANHOLE
- OPENINGS IN WALLS (20" & 30" FLOORS)
- IRON OR STANDARD DOORS OR SHUTTERS
- STEAM BOILERS
- HOISTS OR ELEVATORS
- WOOD OR LATH & PLASTER PARTITION
- PASSAGE OR DRIVEWAY UNDER
- IN 1ST STORY (STROKES SHOWY STORES)
- IN 2ND STORY (STROKES SHOWY STORES)
- FROM LEFT TO RIGHT
- PARAPET WALL (DOUBLE LINE)
- GALLERY OR VERANDAH
- METAL CORNICE (SOLID LINE)
- WOODEN " (DOTTED ")
- SKYLIGHT - LINES UNDER DENOTE OPENINGS IN FLOORS.
- LUMBER PILED
- FIGURES IN BRACKETS (50) DENOTE RELATIVE HEIGHTS OF GROUND
- FIGURES IN STREETS THUS 60' ARE STREET WIDTHS NEAR PARALLEL TO & OUTSIDE OF STREET LINE ARE EXISTING STREET WTS. NEAR RIGHT ANGLE TO OR INSIDE STREET LINE, ARE ARBITRARY WTS.
- B.C. 100' BRICK CHIMNEY 100' HIGH (S.P. = STOVE PIPE)
- I.C. 100' IRON
- TOWN HYDRANT
- PRIVATE HYDRANT
- ON KEY PLAN
- HYDRANTS: H. = TANKS, D. = DETACHED DWELLINGS, S. = SCATTERED DWELLINGS.

CONTINUED FROM ABOVE

BELOW CONTINUED

RUPERT AVE



12

22

6

28

11

10

MAIN

SEE SHEET No. 3

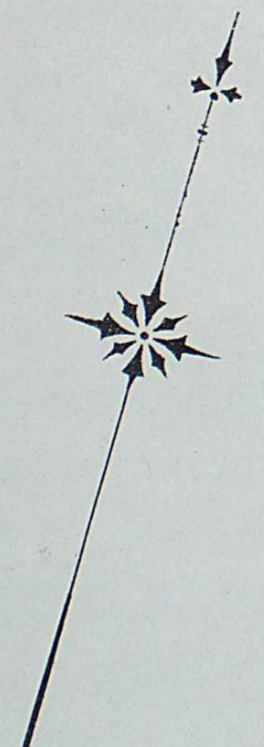
23

13

24

CLARK

VICTORIA



SCALE 50 FT. = 1 INCH



3

3

STOUFFVILLE ONT. - MAY 1910.

60

LUMBER YARD

SCALE FOR THIS PART 100'-1"

STREET

EDWARD

300' TO RUPERT AVE. SEE ABOVE

300' TO RUPERT AVE. SEE BELOW

RUPERT AVE.

18

9

SECOND

8

AGRICULTURAL WKS
Crown Brass & Steel Wks
Silent
20 Hands
Heat: Steam & 1st stove
Light: Fuel: Wood
2 Force Pumps, 30' Hose

PLANING MILL
J.A. Heise
Heat: 1 store
No Light
Fuel: Shavings & Coal
No Watchman

MANSION HOTEL

7000 & CO. GRAIN ELEVATOR
Capn. 35000 bushels

Silver Bros.
Grain Elevator
Capacity 35000 Bush.

MACHINE SHOP
EST
POWER: Steam
LIGHT: ELECTRIC
WATCHMAN

PARKEY BROS

STATION
Freight Shed

MAIN

GRAND TRUNK RAILWAY (MIDLAND DIVISION)

FAIR

25

19

O'BRIEN

SOMERVILLE

CONTINUED FROM BELOW

WINEGAR WORKS
POWER: ELECTRIC
7 HANDS - WATCHMAN
400 Gallon Tank over Engine Rm.

ALBERT

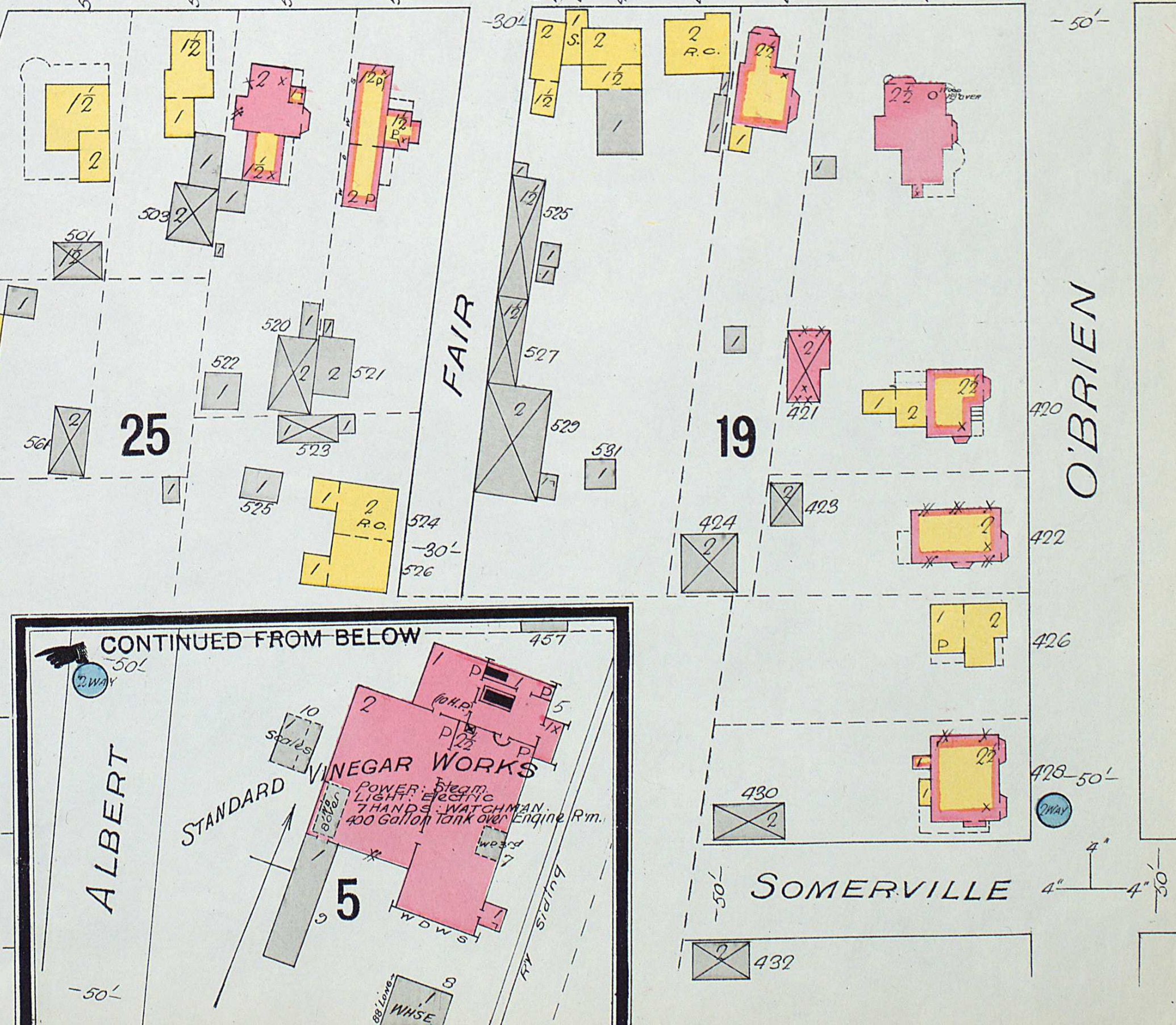
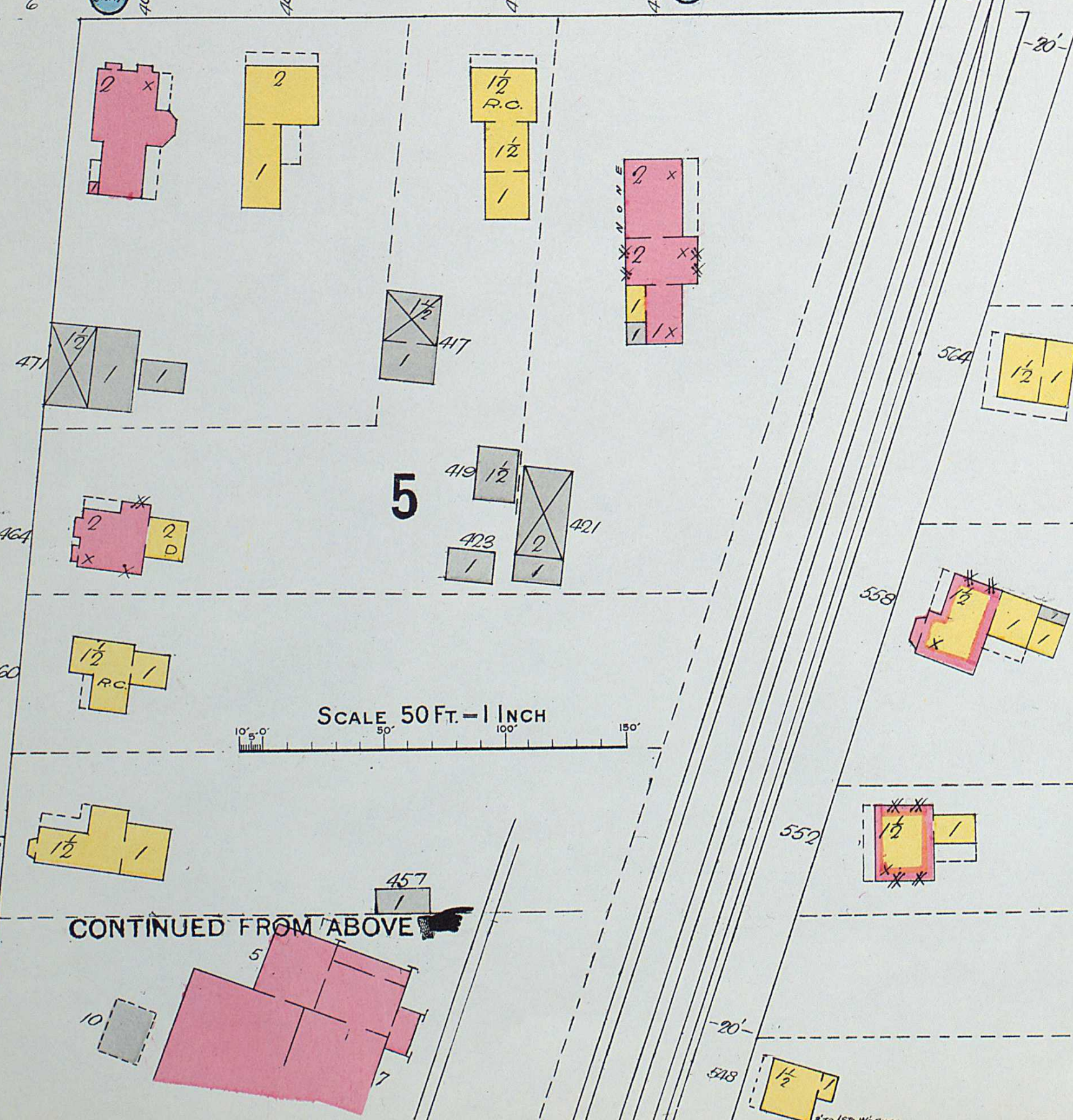
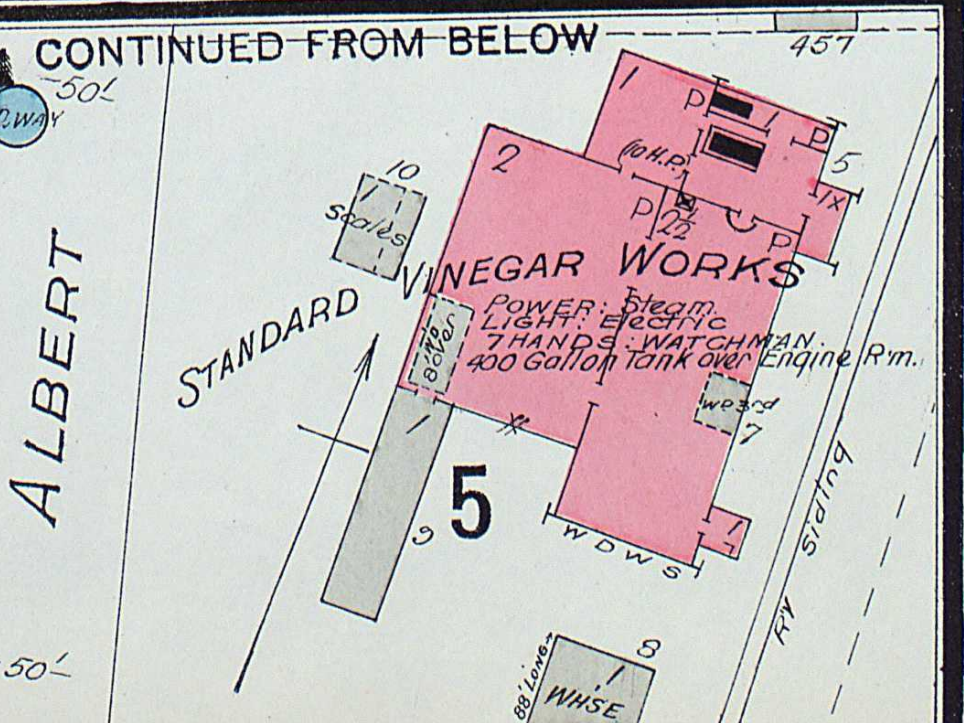
5

SEE SHEET No. 2

SEE SHEET No. 4

SCALE 50 FT. - 1 INCH

CONTINUED FROM ABOVE



14

STREET

GEORGE

15

MILL STREET

16

DUCHESS

27

MILL

METHODIST CHURCH
25 TO 28 E. 33 TO 35 W. 1/2

2

SEE SHEET No. 3

Band Stand

MAIN

CHURCH

SEE SHEET No. 1

O'BRIEN

29

MARKET

3

MARKET HALL
1st. 2nd

4

SOMERVILLE

SCALE 50 FT. = 1 INCH

