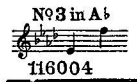
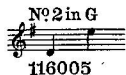


Sung by Mr. JOHN McCORMACK

At All His Engagements



# Dear Old Pal of Mine

Words by

HAROLD ROBÈ

Music by

GITZ RICE, LIEUT.

1st Canadian Contingent

Price 40 cents, net—No Discount

G. RICORDI & CO., INC.

4 EAST 43RD STREET

NEW YORK

and at

LONDON, PARIS,

ROME, PALERMO, NAPLES,

BUENOS AYRES AND MILAN





# Dear old Pal of Mine

Words by  
HAROLD ROBÉ

Music by  
LIEUT. GITZ RICE  
*First Canadian Contingent*  
L. H.

*Andante con espressione*

Piano

*mf*

Detailed description: This block contains the piano introduction. It features a grand staff with treble and bass clefs. The tempo is marked 'Andante con espressione'. The music begins with a series of chords in the right hand and a simple bass line in the left hand. A dynamic marking of 'mf' is present. The key signature has two flats.

All my life is emp-ty, Since I went a-way, Skies don't seem to be so

*mp*

Detailed description: This block contains the first line of the song. The vocal line is in the treble clef, and the piano accompaniment is in the grand staff. The lyrics are 'All my life is emp-ty, Since I went a-way, Skies don't seem to be so'. A dynamic marking of 'mp' is present. The piano accompaniment features a rhythmic pattern of eighth notes in the right hand and a steady bass line in the left hand.

clear, Maysome an-gel sen-try, Guard you while I stray, And

*L. H. R. H.*

Detailed description: This block contains the second line of the song. The vocal line continues with the lyrics 'clear, Maysome an-gel sen-try, Guard you while I stray, And'. A dynamic marking of 'L. H. R. H.' is present. The piano accompaniment continues with the same rhythmic pattern as the first line.

fate be kind to join us some sweet day.

*rall.*

Detailed description: This block contains the third line of the song. The vocal line concludes with the lyrics 'fate be kind to join us some sweet day.'. A dynamic marking of 'rall.' is present. The piano accompaniment concludes with a few chords in the right hand and a final bass note in the left hand.

Refrain

Oh, How I want you, Dear old pal of mine,

*a tempo*  
*mp*

Each night and day I pray you're al - ways mine.

Sweet-heart may God bless you, An - gel hands ca - ress you,

While sweet dreams rest you, Dear old pal of mine.

*poco* - *a* - *poco* - *rit.*

*mf* *L.H.*

Dear - ie I'm so lone - ly, How I miss your smile, And your ten - der lov - ing

*mp*

way, I just want you on - ly, Want you all the while May

*L.H. R.H.*

God de - cree I have you back some day.

*rall.*

Refrain

Oh, How I want you, Dear old pal of mine,

Each night and day I pray you're al - ways mine.

Sweet-heart may God bless you, An - gel hands ca - ress you,

While sweet dreams rest you, Dear old pal of mine.

*a tempo*  
*mp*

*poco - a - poco - rit.*

# Rockin' The Boat

FOX TROT

HUGO FREY  
Composer of Havanola  
Callicoco, Mother's Garden

Introduction

Piano

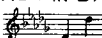
The introduction consists of two staves of music in 2/4 time, marked piano (p). The melody is in the right hand, starting with a quarter note G4, followed by quarter notes A4, B4, and C5. The bass line is in the left hand, starting with a quarter note G2, followed by quarter notes A2, B2, and C3. The piece ends with a fermata over the final notes.

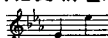
The first system of the main body of the piece starts with a repeat sign and a first ending bracket. The melody in the right hand features eighth and sixteenth notes, while the bass line consists of quarter notes. The piece is marked forte (f).

The second system continues the melody and bass line from the first system. The right hand has a more active melody with eighth notes, and the left hand provides a steady bass accompaniment. The piece is marked forte (f).

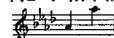
The third system concludes the piece with a second ending bracket. The first ending leads back to the beginning of the system, and the second ending leads to the final cadence. The piece is marked forte (f).

SUNG BY  
MR. JOHN Mc CORMACK  
AT ALL HIS ENGAGEMENTS

№ 1 IN D♭  
  
116437

№ 2 IN E♭  
  
116438

№ 3 IN F  
  
116439


№ 4 IN A♭  
  
116440


Little Mother of Mine

Words by  
WALTER H. BROWN

Music by  
H. T. BURLEIGH

Andante cantabile

Voice  Some -

Piano 

  
times in the hush of the eve - ning hour, When shad - ows creep from the west \_\_\_\_\_ I

