

PUBLICATIONS

Handsomely
Illustrated
Descriptive Matter
of the

“Highlands of Ontario”

Can be
secured on application
to

GENERAL PASSENGER AND TICKET AGENT,
GRAND TRUNK RAILWAY SYSTEM,
MONTREAL.

ASST. GENERAL PASSENGER AND TICKET AGENT,
GRAND TRUNK RAILWAY SYSTEM,
CHICAGO.

THE FOLLOWING ARE NOW ISSUED :

- “Muskoka Lakes—Highlands of Ontario.”
- “Lake of Bays—Highlands of Ontario.”
- “Among the 30,000 Islands of the Georgian Bay.”
- “Tourist Travel,” “Hay Fever,” “Kawartha Lakes,” Etc.



AT HOME AND ABROAD

“The best traditions of sound life underwriting are being maintained by the Canada Life management.”—

Monetary Times, Toronto.



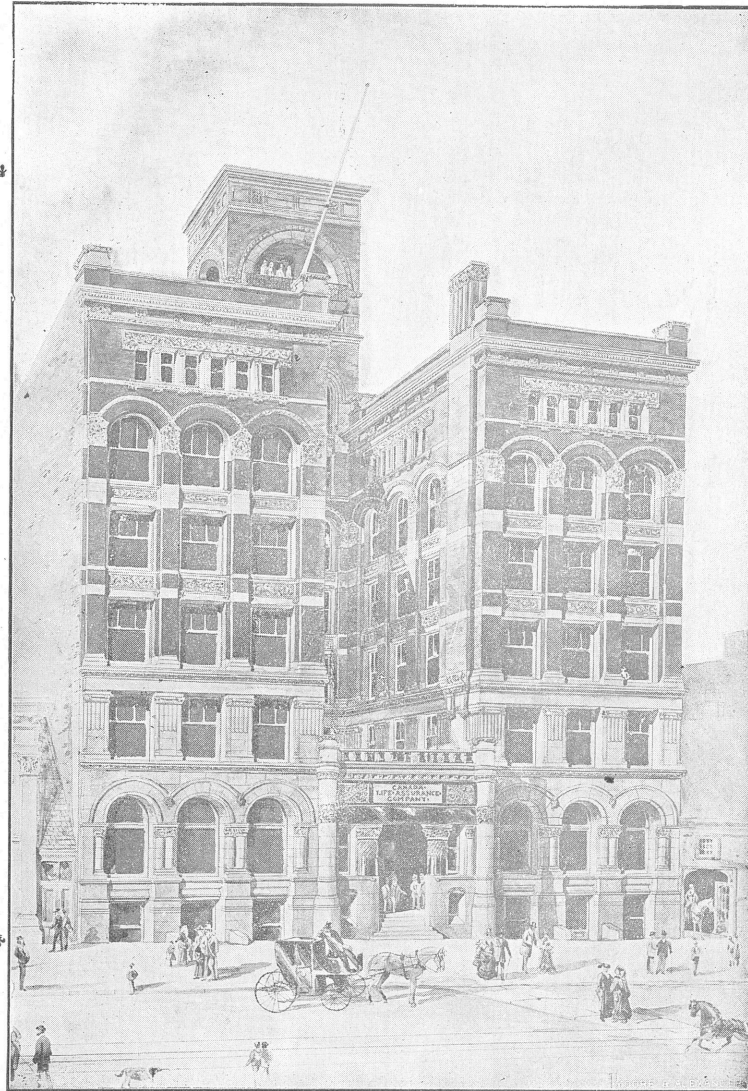
“Under the present management, as in the past, the first consideration is the absolute safety of every contract.”—

The Globe, Toronto.



We congratulate the officials of the Canada Life upon a report which speaks so eloquently of the past progress and future prosperity of the Company.”—

*Insurance and Finance Chronicle,
Montreal.*



“The 53rd Annual Report of the Canada Life makes a handsome showing.”—

Insurance Press, New York.



“The report of the Canada Life Assurance Company indicates that it is in a splendid position.”—

Insurance Post, Chicago.



“The history of this great colonial enterprise is indeed one of sturdy and conservative expansion.”—

*Joint Stock Companies' Journal,
London, Eng.*

INCOME IN 1899 OVER \$3,000,000

ASSETS OVER \$21,000,000

BUSINESS IN FORCE OVER \$80,000,000

THE CANADA LIFE ASSURANCE COMPANY

IS RECOGNIZED AS **CANADA'S LEADING COMPANY.**

MUSKOKA

THROUGH A CAMERA



AN ALBUM OF THE MUSKOKA LAKES,

DEVOTED TO A DESCRIPTION OF THE UNRIVALLED
BEAUTIES OF THIS REGION, HOTEL ACCOMMODA-
TION, RAILWAY AND STEAMBOAT SERVICE,
FISHING, HUNTING, ETC., CONTAINING
LIST OF HOTELS, BOARDING HOUSES,
MAP OF THE LAKES AND VIEWS
OF HOTELS AND SCENERY.

PRICE **25** CENTS.

EDITED AND PUBLISHED BY
FREDERICK SMILY,
TORONTO,

(Publisher of "Canadian Summer Resort Guide," etc.)

Entered according to the Act of Parliament in the year of Our Lord One Thousand Nine Hundred, by
FREDERICK SMILY, in the Office of the Minister of Agriculture, at Ottawa.



PRINTED BY
R. G. McLEAN,
32-34
LEONARD ST.,
TORONTO.



G.T.R. STATION, MUSKOKA WHARF "ARRIVAL OF THE EXPRESS," CONNECTING WITH M.N.CO.'S BOATS.

MUSKOKA THROUGH A CAMERA.

... **A**S THE title of this brochure denotes, the intention is not to furnish a discursive history or lengthy description of the beautiful district known as the "Muskoka Lakes," although such would prove interesting reading; but rather to convey a pleasing impression, through the aid of the camera, of the delightful scenery, picturesque hotels, and many attractions of this enchanted and enchanting region.

Year after year witnesses a steady increase of travel, and of the thousands who come and see, hundreds remain permanent summer residents, annual pilgrims and votaries at this shrine of nature, the footstool of Paradise.

We will confine ourselves to a cursory glance at the formation, line of travel, accommodation and general advantages of this lake region, known as the "Highlands of Ontario."

The origin of the word Muskoka is somewhat veiled in obscurity. It is an Indian word, supposed by some to be derived from the Missasaga Chief "Mesqua-okee," others claim its origin from "Mus-quo-tah," signifying "Red Ground," and still others designate an Indian word indicating "Clear-Sky-Land" as its derivative.

But from whatever source came the name, it is one that is endeared to thousands as embodying a fairy land of pure happiness, redundant of health, and tinged with a halo of the most pleasant memories.

The principal lakes, three in number, are Muskoka, the first and largest; Rosseau the second, and next in size; and Joseph the third and smallest. These lakes vary in width from narrow channels to stretches of water about six miles wide. Muskoka Lake

is twenty-one miles long from Muskoka wharf to Port Carling, where Rosseau commences; this latter lake is twelve miles in length from Port Carling to Rosseau at the northern terminus, while Lake Joseph is about fourteen miles from Port Sandfield, its junction with Rosseau, to Port Cockburn at the head of the lake.



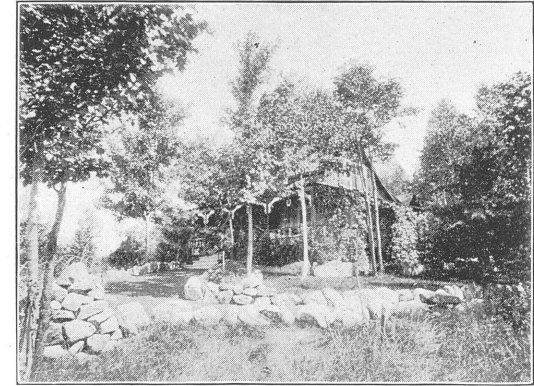
MUSKOKA RIVER—BRACEBRIDGE ROUTE OF M. N. CO.

There are many smaller lakes in this region, numbering about 800, of all shapes and sizes. The waters of the larger lakes and of many of the lesser ones are dotted with islands, totalling about 400, of every conceivable formation, and varying in extent from small rocky excrescences to densely wooded tracts of land hundreds of acres in extent. The elevation of this region, 1,000 feet above sea level, ensures a most bracing atmosphere, charged with ozone and the balsamic odors of extensive pine, spruce, hemlock and cedar forests, and justifying the title Highlands of Ontario.

The surrounding neighborhood, with its health-giving climate, is noted for its efficacy in the cure of hay fever, consumption, and lung

complaints, and in building up and toning the system.

Apart from the superlative attractions of Muskoka, and the enterprise of the proprietors of the numerous comfortable hotels and boarding houses, doubtless one of the



"RAVENSCRAG," SUMMER RESIDENCE OF T. EATON, TORONTO.



A MUSKOKA TROUT STREAM.

most important factors in the success and popularity of the district is the excellent service afforded by the Grand Trunk Railway System, from all parts of the States, in co-operation with the Muskoka Navigation Company. This latter enterprising corporation has a fleet of seven first-class steamers, fitted up in modern style, with every convenience, not the least of which is the excellent bill of fare provided, which is quickly appreciated by travellers with appetites sharpened by a long railroad journey and the keen bracing air of the lakes.

A new boat has this year been built and put in commission by the Muskoka Navigation Company, in order to better accommodate the great increase of travel in this region.

The distance from Toronto to Muskoka Wharf, the starting point of the Muskoka Navigation Co.'s steamboat trip, is 112 miles. It is on the main line, Northern Division of the Grand Trunk Ry. The Muskoka Express leaving Toronto

about 11.30 a.m., is one of the best appointed trains in Canada and will this year have a complete new complement of parlor cars of the latest design and costliest construction. It is little more than half a day's journey from Toronto or Hamilton to the farthest point on the lakes. After leaving Muskoka Wharf the steamer traverses Lake Muskoka, and threading between many beautiful islands, arrives shortly at the first stopping place, Beaumaris.

The larger lakes in the Muskoka district, viz., Muskoka, Rosseau and Joseph, are fed by several rivers and streams, the most

formidable rapids, is the most important in this north country. It forms the route for the popular trips from Bracebridge to Beaumaris, etc., of the Muskoka Navigation Co.

Among other watercourses are the Dee River, near Windermere, connecting Three-Mile Lake with Lake Rosseau; Skeleton River, the outlet from Skeleton Lake into Lake Rosseau; Rosseau River, with picturesque falls, flowing into the same sheet of water, and Shadow River, of more than local fame, at the head of Lake Rosseau. This river is "Nature's Mirror," reproducing with marvellous dis-



VIEW FROM "THE MOUNTAIN," PORT SANDFIELD, SHOWING LAKES ROSSEAU AND JOSEPH.

notable being the Muskoka River, which, having its headwaters in the famous Algonquin Park, many miles to the northeast, flows through the Huntsville Lake district, emerging into two branches from either end of this chain of lakes, to unite again at Bracebridge. From thence it flows across Muskoka Lake, finding an outlet at Bala, where with its off-shoot, the Moon River, it flows onward to Georgian Bay, draining the Muskoka district into Lake Huron and the great inland seas. This river, with many high water falls and

tinctness every object upon or near its surface, and, as it were, inverting the landscape.

The waters of Rosseau and Muskoka are of a noticeably dark reddish brown color, due probably to the vegetable matter, and pine and hemlock forests through which so many streams flow, although some attribute the hue to the surrounding mineral rocks. In marked contrast is the clear water of Lake Joseph, which is fed largely by springs.



A VIEW OF LAKE JOSEPH FROM PORT COCKBURN.



CANOEING ON MUSKOKA WATERS.

The Ontario Summer Hotels Co., Limited.

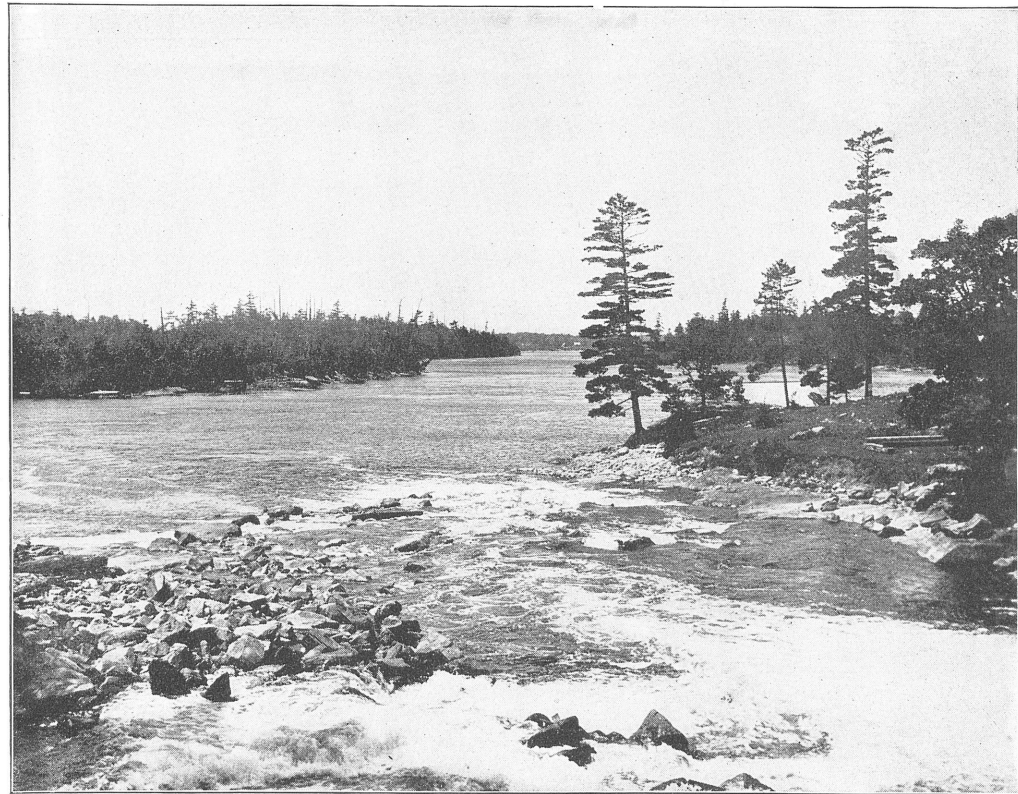
THE object of this company, which has its headquarters in Toronto, is to establish a circuit of really first-class modern tourist hotels throughout Muskoka and the Highlands of Ontario, on the G.T.R. System, ensuring to summer travellers a uniform standard of excellence at a regular scale of rates. Plans have been prepared for three large hotels, the erection of which it is expected will commence this fall.

A. C. A. Meet.

An event of more than usual import to the sojourner in Muskoka this year will be the meet of the members of the American Canoe Association. This will be held on Tobin's or Big Island in Lake Rosseau. The camp site will be on the south-west corner of the island, on Mr. G. R. R. Cockburn's property, which has been rented for this purpose. The distance from Port Carling is about one and a half miles. There is a fine steamboat wharf where the Muskoka Navigation Co.'s boats call, a good bathing beach, and pretty walks through the bush, and plenty of good level open spaces. Messrs. W. Hanna & Co., of Port Carling, will build, equip and conduct the camp store, which will be located near the wharf. Their supply boat "Mink" will call daily with ice and fresh provisions. This is sufficient guarantee that the commissariat department will be in good hands.

The meet will be held from August 3rd to 17th. Fares at one and one-third for the round trip have been secured for members of the A. C. A., via Grand Trunk to Muskoka Wharf. Canoes, war canoes and duffel carried free.

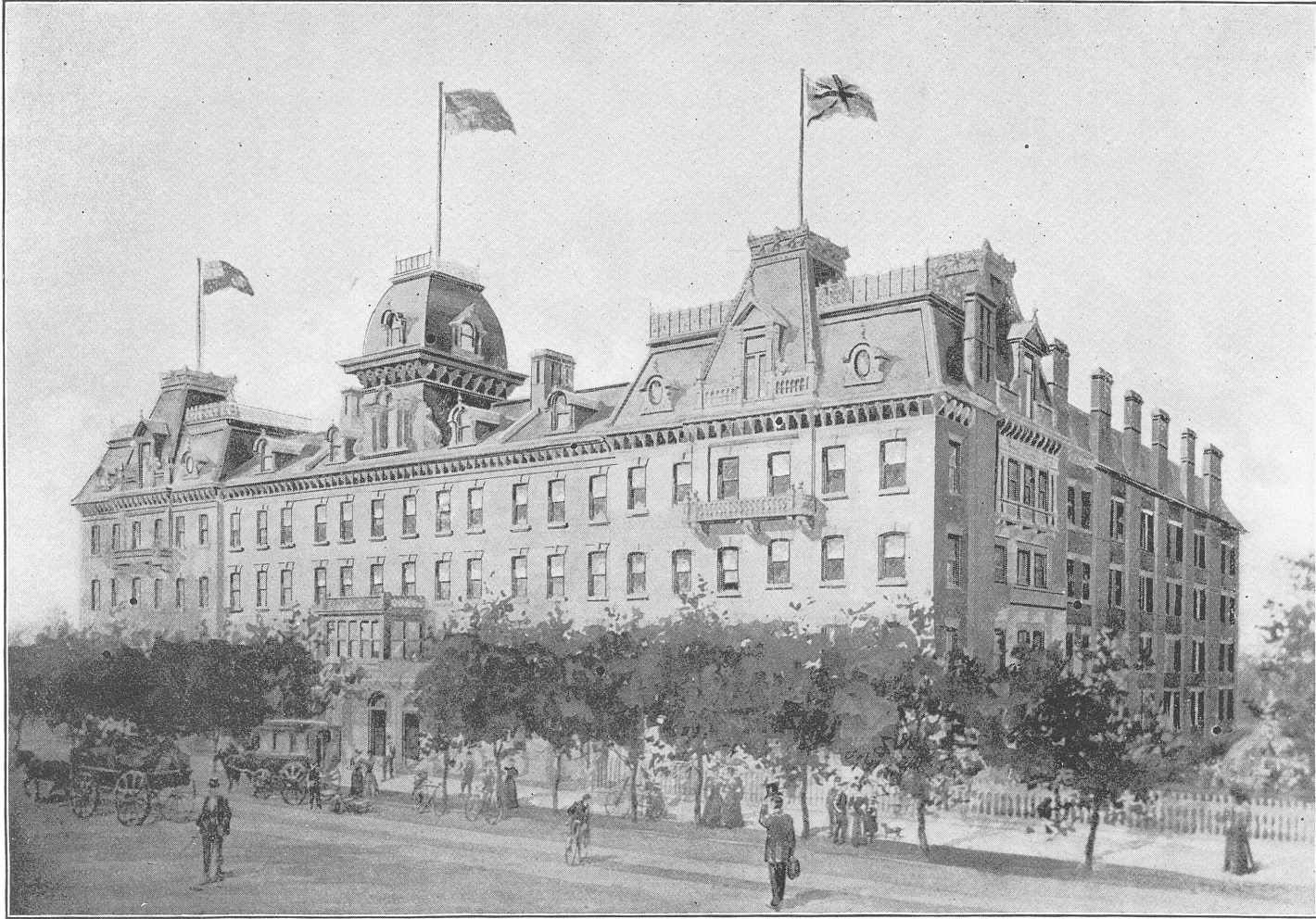
The A. C. A. camp site is one of the most convenient and most central spots in Muskoka Lakes. The A.C.A. was organized in 1880. The membership now numbers 2,000. The annual fee is \$1.00 and initiation fee \$1.00 for any canoeist over 18, in good standing. Mr. W. G. Mackendrick, 200 Eastern Avenue, Toronto, is the Commodore.



OUTLET TO MOON RIVER NEAR BALA—FROM MUSKOKA LAKE TO GEORGIAN BAY.

Accommodation.

Each succeeding year efforts are made to cope with the increasing tide of travel, but the capacity of all the houses on the lakes is taxed to the utmost. Many houses are this year being enlarged, new ones have been erected, and modern improvements have been introduced in some of the leading houses. It is expected next year there will be erected some really first-class modern hotels, with a capacity for about 300 guests. Efforts are now being made to this end by The Ontario Summer Hotels Company of Toronto and The Muskoka Tourist Hotel Company of Hamilton.



QUEEN'S HOTEL, TORONTO.

The Queen's Hotel, Toronto.

... A PROMINENT American hotelman of many years' experience recently gave forth his opinion that hotels conducted upon staid conservative principles of management were the hotels—and the only hotels—that would pay and stay. The same authority deploras the rapidly growing tendency in recent years of designers and builders of hotels to attach too much importance and render far too prominent that garish glitter and extravagance of ornamentation which distinguish the modern hotels of the United States. While in them there is provided every possible comfort and convenience that human ingenuity and skill can devise and unstinted capital can furnish, there is lacking that feeling of rest and refinement which less pretentious—yet withal sometimes more exclusive—hotels possess.

This air of comfort, the substantial thoroughness of furnishings and all appointments, and the quiet dignified decorum of the officials and attendants, is remarked and commented upon by a great many visitors who stay at the "Queen's." These are elements that money cannot provide; they are the result of careful study of the fitness of things and the ability to minister to all the wants and comfort of guests.

In the Queen's Hotel there is no undue straining after effect, but everywhere is evident a quiet harmony of tone and coloring, and an unmistakable air of "first-class." In recommending the Queen's to anyone visiting Toronto we do so with a consciousness that the recommendation will be appreciated and that nothing will be found lacking in the welcome accorded to the traveller.

The location of this hotel is most happily chosen. While it is but a few minutes' walk from the Union Station and steamboat landings and in the heart of the business portion of the city, it is yet free from noise and dust and perfectly cool in the hottest weather. From the verandahs and windows a good view is obtained of the bay and lake; at one end of the house are the hotel grounds, with level green lawns, stately shade trees, and the refreshing music of a fountain playing in the centre of the lawn; from the lake are wafted cool breezes, tempering the midsummer heat, while within easy reach are the leading business thoroughfares, retail stores and places of amusement.

The Queen's is only four storeys in height, covering a large area, with numerous means of exit, affording abundant ready avenues of escape in the possible emergency of fire. The rooms are large, lofty and handsomely furnished, arranged en suite, with bathrooms and dressing rooms on each floor. The latest improved sanitary appliances have been installed, with the most modern methods of

heating, lighting, ventilation, etc. The Queen's is noted for the skill of its chefs and the excellence of its cuisine, the greatest care being exercised in the conduct of this important feature of the internal economy of the establishment. Elegance and comfort are combined in the happiest manner.

Among the guests who have from time to time patronized this justly popular house may be noted the Prince of Wales, Prince Leopold, the Marquis of Lorne, and other members of the Royal Family and of the nobility. It is also the headquarters of members of Parliament, Governors-General, Prime Ministers, and distinguished English and American visitors to this city.

In respect to natural advantages of location, charm of scenery and many other attractions for summer visitors, Toronto is a much favored city; yet can the Queen's claim credit in a great measure for the ever increasing influx of tourists during the summer season. As a result, it has been found necessary to make provision for the added volume of travel by the addition of fifty more rooms. The extra wing is about completed, and much needed accommodation will now be available, providing guest capacity for 450 people. The rates are exceedingly reasonable, viz., from \$3.00 to \$5.00 per day. The proprietors, Messrs. McGaw & Winnett, are too well known to the travelling public to require any introduction or eulogy.

In addition to the Queen's Hotel, Messrs. McGaw & Winnett also conduct the fashionable Queen's Royal at Niagara-on-the-Lake, which is under the personal management of Mr. Henry Winnett.

This hotel is a spacious structure, electric lighted, and containing lofty and handsomely furnished bedrooms, parlors, smoking rooms, dining room and ball room, and the latest sanitary appliances. It is situated on the bank of the Niagara River near its mouth. Wide verandahs surround the building, from which the beautiful scenery may be enjoyed; in front the broad sweep of Lake Ontario, and on either side the Queen's Royal Park, with its cool, green, velvety lawns and branching shade trees. The Saturday evening "hops," lawn tennis and lawn bowling tournaments, golf, bicycling, boating, bathing and fishing are magnets which draw crowds of fashionable pleasure seekers to this renowned resort. In the building are telegraph and telephone offices. There is accommodation for 250 guests and the rates are \$3.00 to \$5.00 per day. The journey across the lake on the palatial boats of the Niagara Navigation Company, with a stay at the Queen's Royal, is one of the most popular trips from Toronto.



HOMER & CO.'S SUPPLY BOAT, "CONSTANCE."

Cottage and Camp Supplies.

“SUMMERING in Muskoka” does not by any means solely imply, nor does it entirely consist of, occupying a suite of apartments at some fashionable hotel, displaying one's self at certain hours of the day at well chosen vantage points, attired in faultless costume and dazzling raiment, and otherwise following the course of events as they present themselves at the modern summer hotel. To a certain extent this is possible, and may obtain somewhat in Muskoka, but not universally so.

Apart from hotel life, however, there is a large population in Muskoka, which has its habitation in the numerous cottages scattered through the lakes.

Many residents live still nearer to nature, in a more primitive fashion, dwelling in tents, like Jacob of old and his ilk. To these “nomads” the question presents itself, and it is a most vital one: How to obtain the food supply?

But do not be alarmed. The problem is easily solved. It is not necessary to take boat and row five or ten miles to the nearest store, as in the times when the Hudson's Bay Company was the only merchant in Canada, with branch stores or posts at various intervals throughout the land—or water.

Considering that there are upwards of 275 to 300 cottages in Muskoka, perched on islands in “splendid isolation,” or planted on points of land, surrounded by dense bush, each cottage occupied by a large family or party, this question of supply and demand, or demand for supplies, is certainly a big one.

But, as already said, the solution is easy.

The solution presents itself in the unfailing and systematic service of the “Supply Boat.” The subject of this sketch, appropriately named the “Constance,” will be seen in the illustration on the opposite page.

This floating store is owned and operated by Messrs. Homer & Co., of Gravenhurst and Rosseau. The latter place is the headquarters for stocking up.

The “Constance” makes daily trips through Lakes Rosseau and Joseph, calling at all cottages and hotels when required, delivering goods and taking orders for the next day's supply. It is only necessary to flag the boat, when in the neighborhood, to ensure a call, although a regular trip is maintained, calls being made on all customers at certain hours.

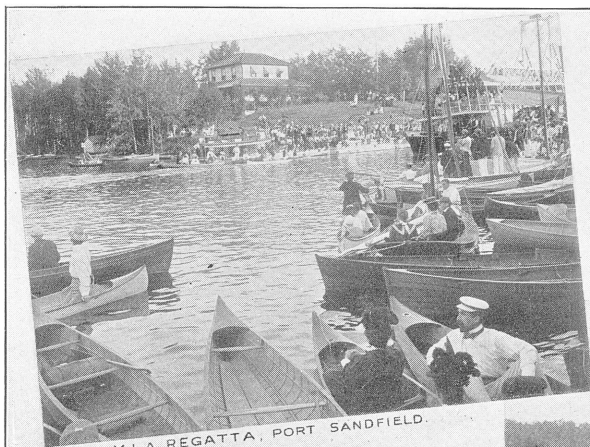
Moreover, there need be no apprehension as to variety of goods carried on this boat. A most complete stock is kept of practically every requisite article for daily use and consumption, from a shoe lace to a sack of flour. Anything ordered, if obtainable, is promptly delivered, and it is astonishing what are the resources of this craft. In groceries you will find the leading brands of canned goods, pickles, sauces, etc., besides fine grades of sugar, teas, coffees, condiments, candies, and standard makes of confectionery. A special feature is made of fresh meats, prime beef, and the noted “Muskoka lamb and mutton,” besides salt meats. Fresh fruits and vegetables in season are supplied. Coal oil, hardware, crockery, dry goods, flour and feed, boots and shoes, stoves, tinware—everything, in fact, including the best brands of cigars, tobacco, cigarettes, etc., etc., is carried on this boat.

Besides the supply business, the “Constance” is frequently utilized for excursions by those desiring to visit distant cottages and see the varied scenery and secluded places at leisure, and in a manner not so convenient on the large boats.

Gravenhurst is Messrs. Homer & Co.'s headquarters, from whence goods may be ordered by mail, telegraph or telephone, to be shipped by M. N. Co.'s boats up the lakes.



A FEW BIG FELLOWS.



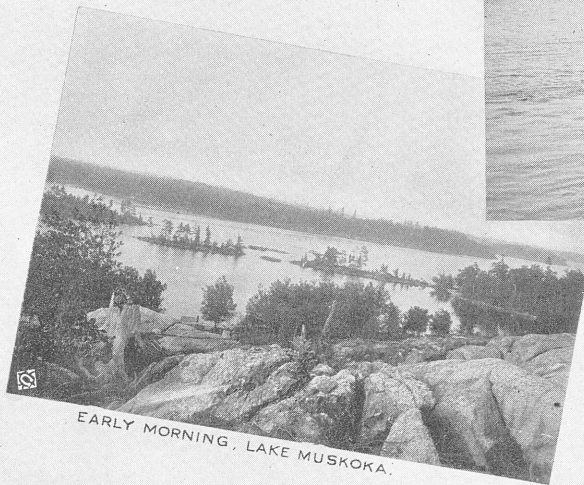
M.L.A. REGATTA, PORT SANDFIELD.



ISLAND PORTAGE, MOON RIVER



S.S. MUSKOKA OF THE M.N.C.



EARLY MORNING, LAKE MUSKOKA.



M.L.A. REGATTA, WINDERMERE.

GLIMPSES OF MUSKOKA.

Customs Arrangements.

... PERSONS visiting Canada for a limited time for pleasure may bring with them such guns, fishing tackle, tents, camp equipment, cooking utensils, kodaks, bicycles, etc., as they may require for their own use, upon reporting same to the customs officer at the port of entry, depositing with him a sum of money equal to the duty, subject to a refund of this amount if the articles are exported within six months, or they may be forwarded in bond to any point in Canada where a customs officer is stationed where the same regulations as above must be complied with. For the convenience of tourists to Muskoka Lakes, arrangements have been made for the location of a customs officer at Muskoka Wharf for the examination and passing of incoming baggage. Tourists will find this a great convenience over the former arrangement, and baggage can now be bonded and forwarded to Muskoka Wharf, where inspection will be made by the customs officer.

Passengers for Muskoka Lakes should see that their baggage is checked DIRECT TO MUSKOKA WHARF, or through to destination. When checked to GRAVENHURST, vexatious delays are liable to occur.

Beaumaris—Wm. Black.
Brucebridge—John Cooper.
Port Carling—Frank Foreman, Richard Foreman, Fred Penson.
Rosseau—Thos. Webster & Son.
For Blackstone and Crane Lakes—Robinson Brothers, Port Cockburn.
Barnesdale—I. J. Barnes.



MORINUS HOUSE, LAKE ROSSEAU.

Guides.

Rates from \$1.00 to \$1.50 per day and board. Boats and Canoes extra.

Port Cockburn—Fred. Bradev, Benjamin Bradey, Patterson Brothers.
Bala—Albert May, John May, R. Hamill, H. Wilson, Wm. Renshaw, J. Palmer.

How to Reach Muskoka.

... FROM points in the SOUTH passengers reach the Grand Trunk Railway, either by way of Buffalo and Niagara Falls, or by way of Detroit. From each of these points trains of the Grand Trunk Railway convey the passengers to Muskoka Wharf.

In the WEST, from Chicago and points in the Western States, passengers are carried over the main line of this great system by way of Port Huron and Toronto, passing through some of the principal cities of the United States and the western part of Ontario.

Between BUFFALO and TORONTO, trains are run solid over the Lehigh Valley and Grand Trunk, crossing the Grand Trunk's new single arch, double track, steel bridge over the Niagara River.

Passengers from EASTERN POINTS, such as Quebec, Portland and intermediate stations, proceed via the main line of the

Grand Trunk Railway through Montreal to Toronto, and those from Boston and all New England points by connecting lines via the same route, and thence on to Muskoka by the GRAND TRUNK RAILWAY SYSTEM.

Tourists from the MARITIME PROVINCES reach the Grand Trunk via the Intercolonial Railway, via Montreal, and proceed over the main line as above described.

From points in the EAST and south of Buffalo, including the States of New York, Pennsylvania, West Virginia, Maryland, etc., the route is by way of Niagara Falls, thence Grand Trunk Railway.



SUPPLY BOAT "MINK," OF W HANNA & CO., PORT CARLING.

Supply Boat "Mink."

THE importance of the question of the food supply to cottagers and campers in Muskoka has already been emphasized. It can therefore readily be understood that more than one of these "floating stores" or "supply boats" is necessary to minister to the wants of the large "floating population" of these lakes and satisfy the cravings of the "Muskoka appetite," which is developed to such an alarming extent by the average summer visitor.

As a matter of fact, the boats which ply on Lakes Joseph and Rosseau, acting as purveyors of the daily bread, meat, vegetables, and the many etceteras needed by the residents, commence their trips often before daylight and continue long after dark, calling at the numerous islands and cottages and hotels on their route.

On the opposite page we give a good illustration of the "Mink," owned and operated by the well-known Port Carling merchants, Messrs. W. Hanna & Company.

Port Carling, being the very hub and centre of the lake traffic, is a most convenient headquarters for supplies. Messrs. Hanna & Co. conduct a general store there, which is a complete repository for every conceivable description of merchandise. And it must not be supposed that because you are in Muskoka there is any difficulty in purchasing high grade articles of food, etc. With commendable

enterprise this firm keeps a stock of the very best brands of groceries, canned goods, pickles, sauces, condiments, candies, etc., besides cigars, tobacco, cigarettes, and smokers' sundries from the best makers. Fresh fruits and vegetables in season, fresh beef and mutton and salt meats, boots and shoes, coal oil, hardware, ammunition, fishing tackle, stoves, tinware, flour, bread, butter, etc., are kept in stock.

In point of equipment and stock the "Mink" is a counterpart of the store, and with the unflinching regularity of the early morning rattle of the milkman's cart in your city home can be heard the welcome

whistle of the supply boat as she rounds a point of land and ties up at your dock to deliver the previous day's orders and receive commissions for future supplies.

The "Mink" makes daily trips on Lakes Rosseau and Joseph, calling regularly at cottages, camps and hotels, besides making special stops when flagged.

The advent of this boat is always somewhat of an event at the various stopping places, even at the large hotels, where fresh stocks of smoking materials, candies, etc., are laid in by the guests. Apart from the importance of the "shopping" features of this craft, the

daily trips afford the best opportunity for viewing the lake scenery under conditions not obtainable on the large steamers. There is greater leisure to observe the varied effects of foliage, and unfrequented spots and nooks are visited and intricate channels are threaded which are only possible to boats of light draught. Excursion parties are therefore frequently arranged for in true picnic style on this boat.

This year, too, a splendid opportunity will be afforded of visiting the camp of the American Canoe Association, which will be held from Aug. 3rd to 17th on Tobin's or Big Island. The camp store will be erected, equipped and conducted by Messrs. Hanna & Co., and the "Mink" will call daily with fresh provisions, etc.

This fact is of itself a guarantee of the resources of this firm and of their ability to supply provisions in any quantity and of the best quality. There is a telephone and telegraph service in connection with Messrs. Hanna & Co.'s store at Port Carling. It is the location also of the Post Office and Money Order Office.

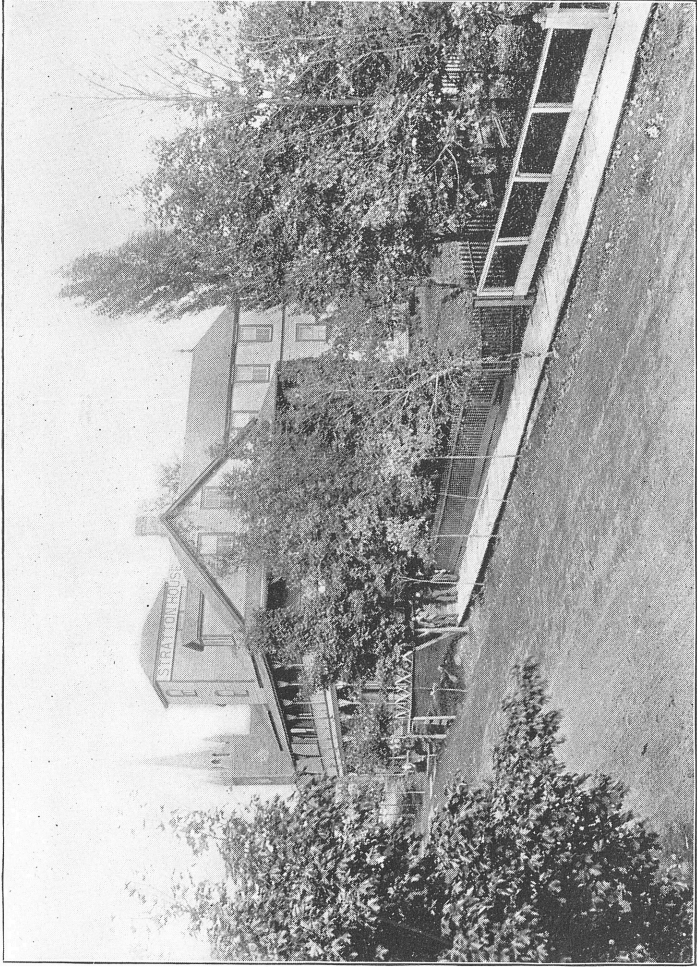
Port Carling itself is well worthy of a visit. It is very prettily situated, and has two good hotels. The passing boats and craft of all sizes, transferring of passengers and meetings of old friends, present a scene of constant animation. The "Port" is easily reached from any point on the lakes.



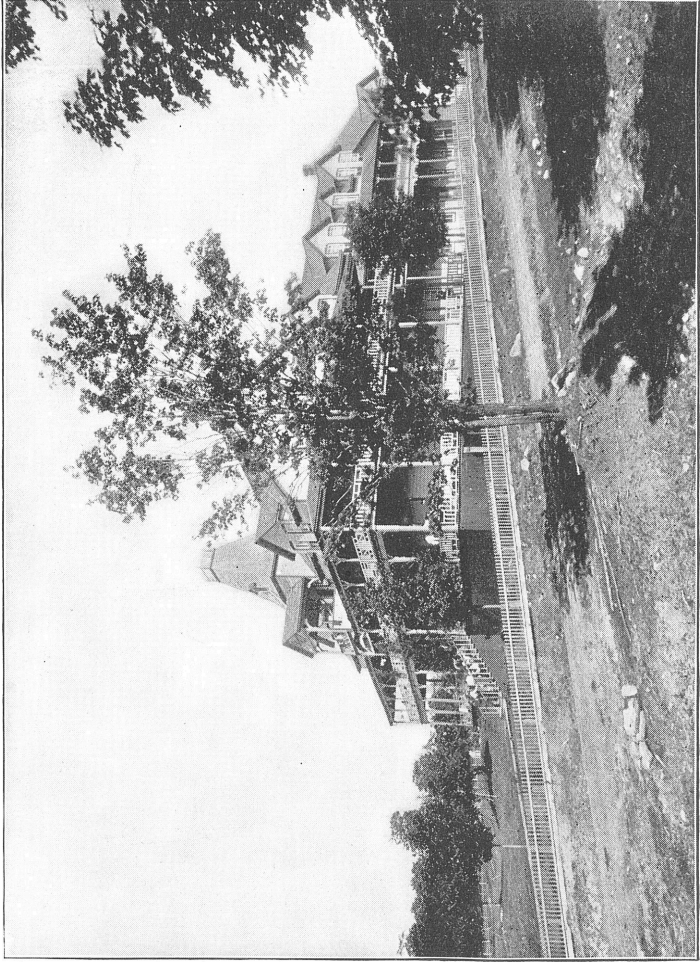
HOW THE INHABITANTS CATCH FISH.



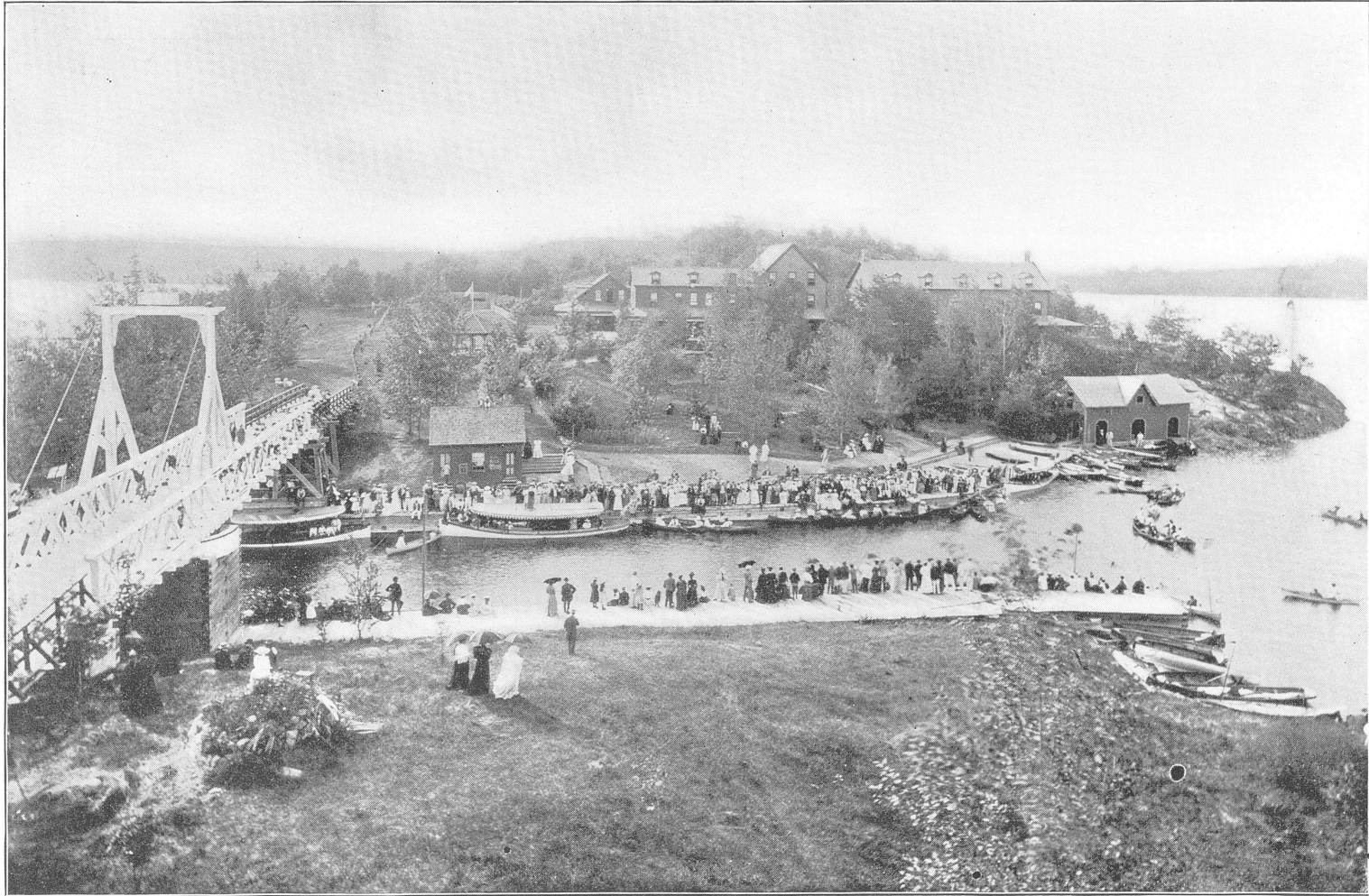
BEAUMARIS HOTEL, BEAUMARIS, TONDERN ISLAND, LAKE MUSKOKA.



STRATTON HOUSE, PORT CARLING.



WINDERMERE HOUSE, LAKE ROSSEAU.



PROSPECT HOUSE, PORT SANDFIELD, BETWEEN LAKES ROSSEAU AND JOSEPH.



CORNER OF HOTEL (EXTERIOR)
ROTUNDA.

VIEWS OF SUMMIT HOUSE, PORT COCKBURN,
LAKE JOSEPH.

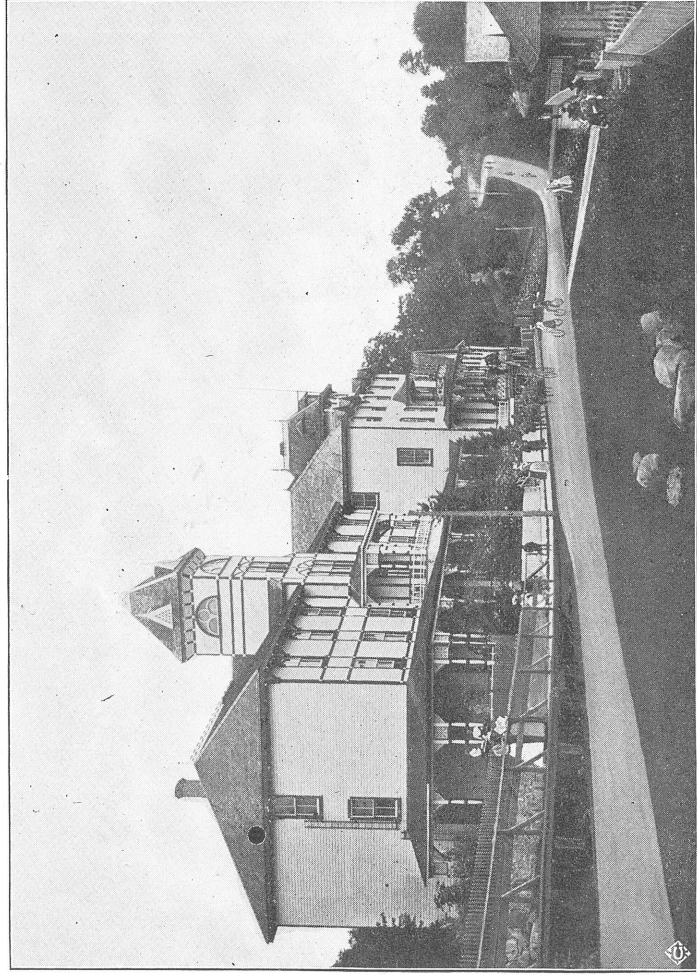
DINING ROOM.
RECEPTION ROOM.



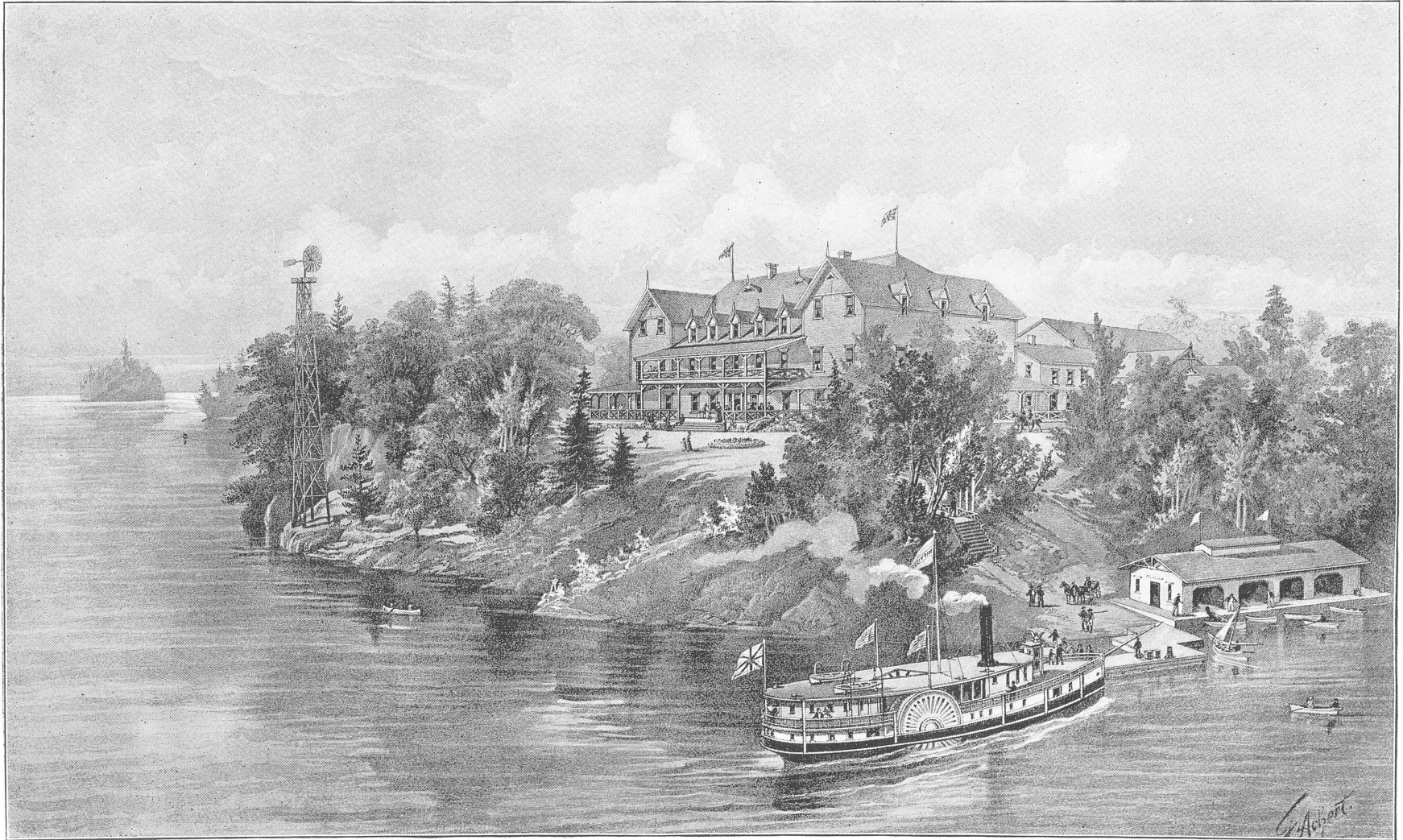
CLEVELAND'S HOTEL, MINETT P.O., LAKE ROSSEAU.



“ ERNSCLIFFE,” JUDDHAVEN, LAKE ROSSEAU.



MONTEITH HOUSE, ROSSEAU, LAKE ROSSEAU.



MAPLEHURST HOTEL (NEAR ROSSEAU), LAKE ROSSEAU.

Henry Ditchburn's Boathouses.

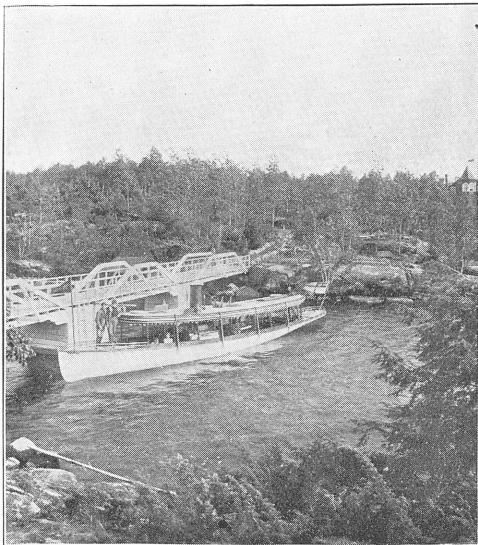
.. **M**USKOKA without boats or canoes would be like Venice without gondolas, or Holland without its flat-bottomed punts; an impossible situation. Water travel is practically the universal means of transportation in Muskoka. It is easily understood, therefore, that boating and canoeing are important means of locomotion in this region of water and land.

In Henry Ditchburn's boathouses Muskoka possesses a most complete institution, with wide-reaching connections. The principal establishments are located at Muskoka Wharf, Mr. Ditchburn's headquarters at the base of navigation, and at Rosseau at the head of Lake Rosseau. From Muskoka Wharf, boats, yachts, canoes, etc., can be shipped by Muskoka Navigation Company's steamers to any point on the lakes. At this boathouse boats, yachts and sailing skiffs of every description and of the very best style and workmanship are manufactured. A skilled boatbuilder, one of the best in Canada, has charge of the factory at Muskoka Wharf, and purchasers may be assured of a first-class article at moderate prices. A great saving is effected both of trouble and

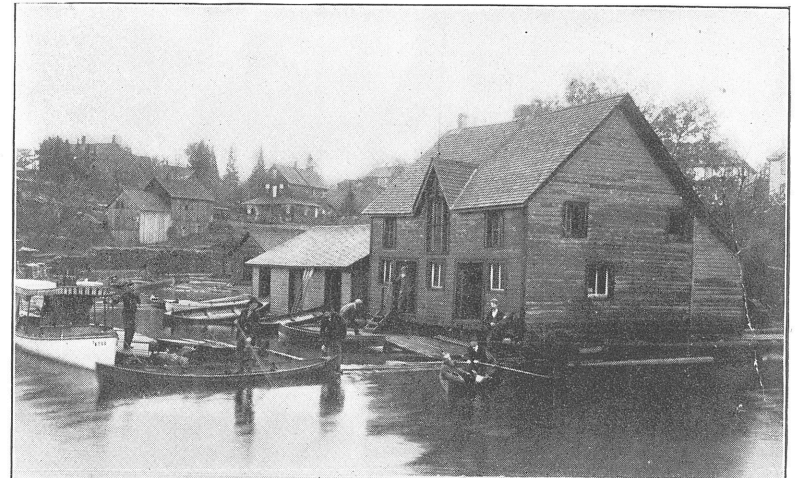
freight rates by renting or purchasing direct from the maker at Muskoka Wharf. Any designs will be faithfully carried out by consulting the expert at the factory. At both these two houses a very large and complete assortment is kept of boats, yachts, canoes, paddles, oars, sails, etc., which can be rented by the week, month or season, or bought outright at moderate prices. All kinds of repairs are carefully and skilfully executed. Branch boathouses are maintained at Port Carling, Windermere, Maplehurst, and at the Penetanguishene Hotel on Georgian Bay.

Boats, canoes, yachts, etc., are stored for the winter at owner's risk, and repaired and put in first-class order for the summer season on reasonable terms.

In addition to this extensive boat business, Mr. Ditchburn has several pretty cottages near Rosseau, well furnished, at rentals running from \$60 to \$100 each for the season.



T EATON'S STEAM LAUNCH "WONDER."



ROSSEAU (TOP VIEW).

MUSKOKA WHARF (BOTTOM VIEW).

Before reaching Muskoka tourists will do well to make all necessary arrangements for any kind of pleasure craft with Mr. Henry Ditchburn, Muskoka Wharf, Gravenhurst.

Hotels.

LAKE MUSKOKA.

PLACE.	HOTEL.	PROPRIETOR.	Accommodation	RATES.	
				Per Day.	Per Week.
*Bala	Windsor House.....	Wm. McDivitt.....	100	\$1.50 to 2.00	\$7.00 to 10.00
	Bala Falls Hotel....	T. Currie.....	100	1.25	7.00
	Hugget's House.....	E. Huggets.....	14	5.00
	Jackson's House....	Alfred Jackson....	30	1.00
† Beaumaris	Renshaw's House....	Wm. Renshaw.....	20	5.00
	Clements' House....	F. Clements.....	20
	Beaumaris Hotel....	E. Prowse.....	200	1.50 to 2.00	8.00 to 12.00
	Windsor Hotel.....	W. McDivitt.....	75	1.00 to 1.50	7.00
Gravenhurst	Minnewaska House..	F. S. Hurlbut.....	50	1.00 to 1.50	5.00 to 8.00
	Albion Hotel.....	F. Wasley.....	50	1.00	7.00
	Caledonian Hotel...	J. Sharpe.....	40	1.00 to 1.50	7.00
	Boarding House....	W. Smith.....	5.00
Hutton House P.O.	Hutton House.....	J. Hutton.....	25	1.50
Leg Lake.....	Leg Lake House....	R. O. Miller.....	Add	ress Gravenhurst, Ont.
‡Milford Bay.....	Milford Bay House..	R. Stroud.....	80	1.25	7.00 & upw'ds
*Mortimer's Pt.	Wingberry House....	W. Mortimer.....	40	1.00	5.00 to 6.00
Whitesides P.O....	Camp Sutton.....	E. B. Sutton.....	50	1.00	5.00 to 7.00

MUSKOKA RIVER.

*Bracebridge	Queen's Hotel.....	J. R. Higgins.....	150	1.00 to 1.50
	British Lion.....	100	1.00 to 1.50	6.00 to 8.00
	Dominion Hotel....	A. Foster.....	40	1.00
	Aibion Hotel.....	I. Leishman.....	1.00

INDIAN RIVER.

(Between Lakes Muskoka and Rosseau.)

‡Pt. Carling	Stratton House.....	J. Fraser.....	75	1.50 to 2.00	8.00 to 10.00
	Pt. Carling House...	Jos. Ruddy.....	50	1.50 to 2.00	8.00 to 10.00
	London House.....	S. Cope.....	25	1.00 upw'ds

LAKE ROSSEAU.

PLACE.	HOTEL.	PROPRIETOR.	Accommodation	RATES.	
				Per Day.	Per Week.
§Clevelands.....	Clevelands Hotel ...	Mrs. F. Minett, Minnett P.O.....	70	\$1.50	\$6.00 to 7.00
§Ferndale.....	Ferndale House....	Seymour Penson...	80	1.00	6.00
§Juddhaven P.O....	Ernscliffe.....	Alfred Judd.....	30	1.00
§Morinus P.O.....	Boarding House....	F. Snow.....
§Maplehurst.....	Morinus House.....	W. D. McNaughton	50	1.00	5.00
§Paignton's.....	Maplehurst Hotel..	The Manager.....	100	1.50 to 2.50	10.00 to 14.00
‡Rosseau	Paignton House ...	J. F. Pain.....	50	1.50	6.00
	The Retreat.....	John Monteith.....	150	1.50 to 2.00	10.00 to 12.00
	Lawrason House...	Miss J. Holton.....	1.00	6.00
	Pinette.....	Mrs J. B. Lawrason
Rosseau Falls....	P. Mutchenbacher..	60
‡Windermere	Windermere House	Thos. Aitken.....	200	1.50	7.00 to 9.00
	Fife House.....	D. Fife, Jr.....	75	1.25	7.00
	Rosstrevor.....	A. Dinsmore.....	5.00
§Woodington.....	Woodington House	M. Woods.....	60	1.25	6.00 to 7.00
‡Port Sandfield	Prospect House....	E. Cox.....	200	2.00	9.00 to 12.00
	Elgin House.....	Lambert Love.....	100	9.00 to 12.00
	Henry House.....	G. W. Henry.....	30	1.00

LAKE JOSEPH.

Barnesdale.....	Barnesdale House .	J. J. Barnes, Yoho P.O.....	25	1.00	6.00
†Craigie Lea.....	Craigie Lea House..	Miss J. P. Creigh...	40	8.00 to 9.00
‡Gordon Bay P.O...	Gordon House.....	A. Winter.....	50	1.00 to 1.50	6.00 to 8.00
§Hamill's Point...	Hamill's Pt. Hotel .	Mrs. Fawcett.....	75	1.25	6.00 to 7.00
‡Port Cockburn...	Summit House.....	H. Fraser & Sons ..	200	1.50 and 2.00	10.00 & 12.00
§Stanley House P.O.	Stanley House.....	W. B. McLean.....	100	1.50 to 2.00	8.00 to 10.00

* Steamers call twice daily.

† Steamers call several times a day.

§ Daily Steamers and Excursion Boats.

‡ Mail Steamers up on Tuesdays and Saturdays, down on Mondays and Wednesdays.

†† Steamers call Tuesdays, Thursdays and Saturdays, at midday.

‡‡ Telegraph Offices.